

Data Path : Z:\pestpcbsrv\HPCHEM1\ECD_D\Data\PD031922\
 Data File : PD068698.D
 Signal(s) : Signal #1: ECD1A.ch Signal #2: ECD2B.ch
 Acq On : 18 Mar 2022 18:55
 Operator : AR\AJ
 Sample : PB143363BL
 Misc :
 ALS Vial : 20 Sample Multiplier: 1

Instrument :
 ECD_D
ClientSampleId :
 PB143363BL

Integration File signal 1: autoint1.e
 Integration File signal 2: autoint2.e
 Quant Time: Mar 19 00:50:39 2022
 Quant Method : Z:\pestpcbsrv\HPCHEM1\ECD_D\Method\PD031222.M
 Quant Title : GC Extractables
 QLast Update : Mon Mar 14 03:30:32 2022
 Response via : Initial Calibration
 Integrator: ChemStation

Volume Inj. : 2 µl
 Signal #1 Phase : ZB-MR2 Signal #2 Phase: ZB-MR1
 Signal #1 Info : 30M x 0.32mm x0.2 Signal #2 Info : 30M x 0.32mm x 0.50µm

Compound	RT#1	RT#2	Resp#1	Resp#2	ng/ml	ng/ml

System Monitoring Compounds						
1) SA Tetrachlo...	3.449	4.175	26639223	216.5E6	21.940	22.645
28) SA Decachlor...	8.208	9.372	26806670	122.5E6	21.218	21.626

Target Compounds

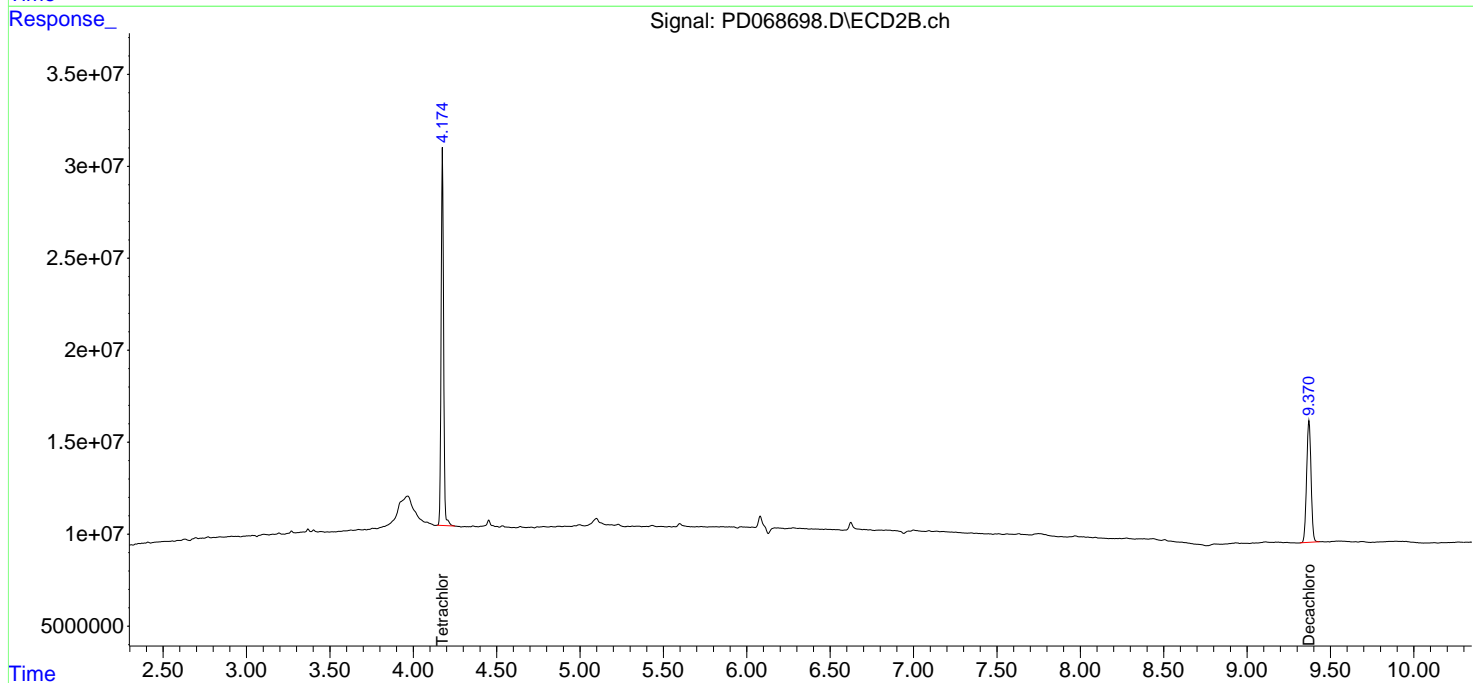
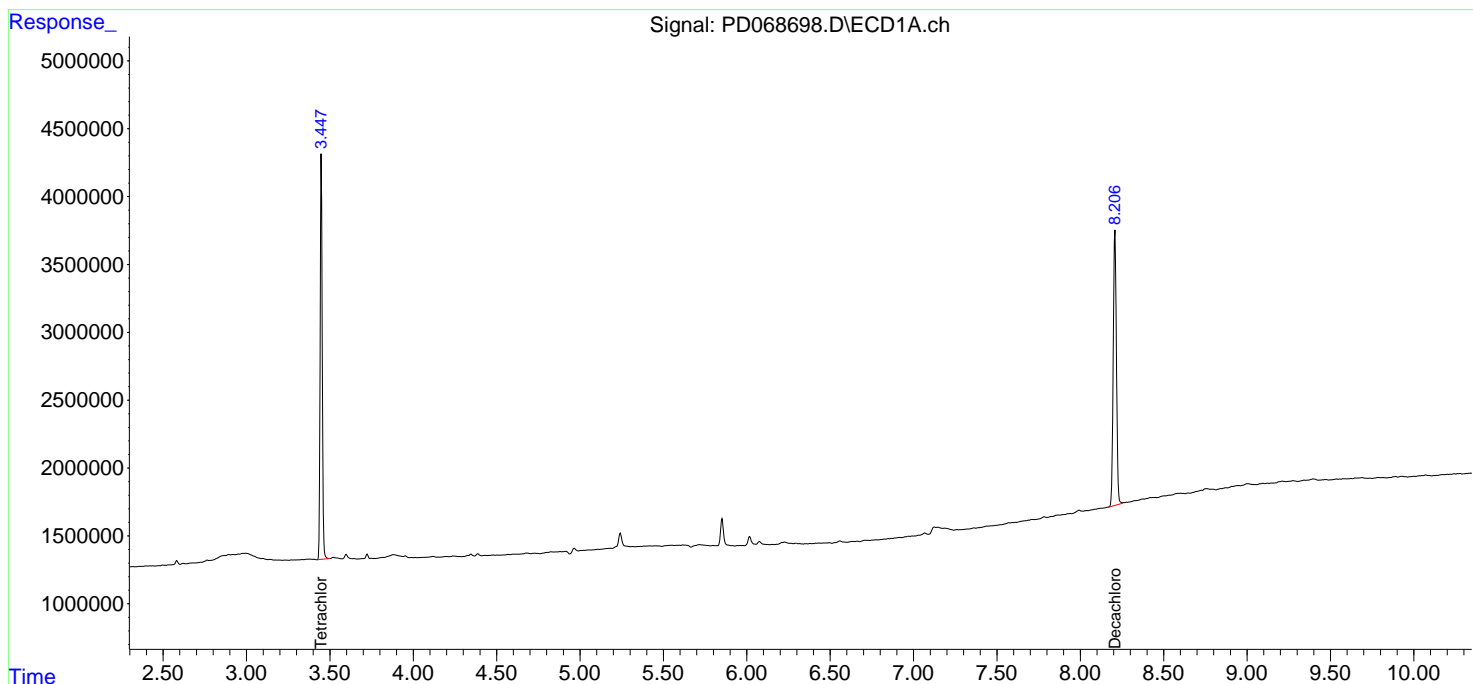
 (f)=RT Delta > 1/2 Window (#)=Amounts differ by > 25% (m)=manual int.

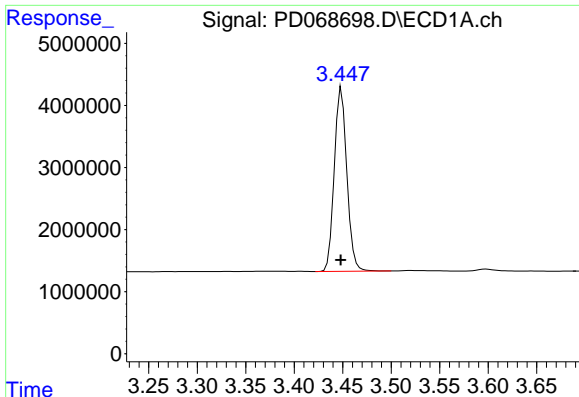
Data Path : Z:\pestpcbsrv\HPCHEM1\ECD_D\Data\PD031922\
 Data File : PD068698.D
 Signal(s) : Signal #1: ECD1A.ch Signal #2: ECD2B.ch
 Acq On : 18 Mar 2022 18:55
 Operator : AR\AJ
 Sample : PB143363BL
 Misc :
 ALS Vial : 20 Sample Multiplier: 1

Instrument :
 ECD_D
 ClientSampleId :
 PB143363BL

Integration File signal 1: autoint1.e
 Integration File signal 2: autoint2.e
 Quant Time: Mar 19 00:50:39 2022
 Quant Method : Z:\pestpcbsrv\HPCHEM1\ECD_D\Method\PD031222.M
 Quant Title : GC Extractables
 QLast Update : Mon Mar 14 03:30:32 2022
 Response via : Initial Calibration
 Integrator: ChemStation

Volume Inj. : 2 µl
 Signal #1 Phase : ZB-MR2 Signal #2 Phase: ZB-MR1
 Signal #1 Info : 30M x 0.32mm x 0.2 Signal #2 Info : 30M x 0.32mm x 0.50µm

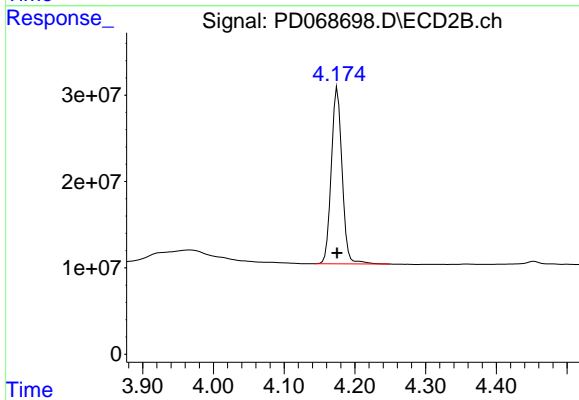




#1 Tetrachloro-m-xylene

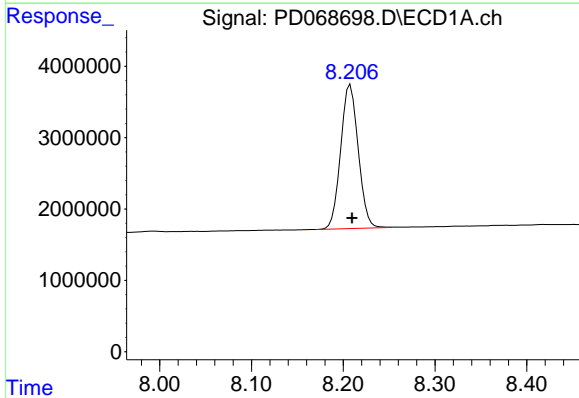
R.T.: 3.449 min
 Delta R.T.: 0.000 min
 Response: 26639223
 Conc: 21.94 ng/ml

Instrument :
 ECD_D
 ClientSampleId :
 PB143363BL



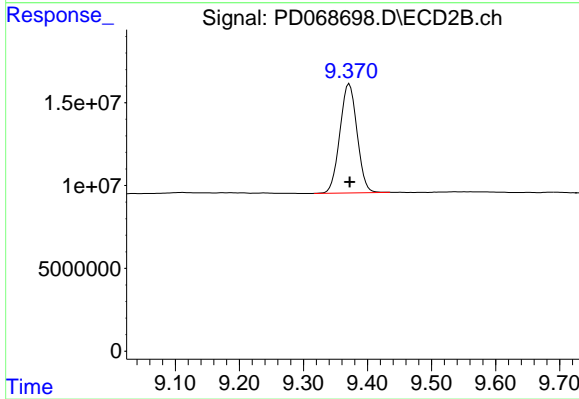
#1 Tetrachloro-m-xylene

R.T.: 4.175 min
 Delta R.T.: 0.000 min
 Response: 216504801
 Conc: 22.65 ng/ml



#28 Decachlorobiphenyl

R.T.: 8.208 min
 Delta R.T.: -0.002 min
 Response: 26806670
 Conc: 21.22 ng/ml



#28 Decachlorobiphenyl

R.T.: 9.372 min
 Delta R.T.: 0.000 min
 Response: 122546984
 Conc: 21.63 ng/ml