

Data Path : Z:\pestpcbsrv\HPCHEM1\ECD_D\Data\PD031922\
 Data File : PD068703.D
 Signal(s) : Signal #1: ECD1A.ch Signal #2: ECD2B.ch
 Acq On : 18 Mar 2022 20:05
 Operator : AR\AJ
 Sample : PSTDCCC050
 Misc :
 ALS Vial : 4 Sample Multiplier: 1

Instrument :
 ECD_D
 ClientSampleId :
 PSTDCCC050

Integration File signal 1: autoint1.e
 Integration File signal 2: autoint2.e
 Quant Time: Mar 19 00:54:12 2022
 Quant Method : Z:\pestpcbsrv\HPCHEM1\ECD_D\Method\PD031222.M
 Quant Title : GC Extractables
 QLast Update : Mon Mar 14 03:30:32 2022
 Response via : Initial Calibration
 Integrator: ChemStation

Volume Inj. : 2 µl
 Signal #1 Phase : ZB-MR2 Signal #2 Phase: ZB-MR1
 Signal #1 Info : 30M x 0.32mm x0.2 Signal #2 Info : 30M x 0.32mm x 0.50µm

Compound	RT#1	RT#2	Resp#1	Resp#2	ng/ml	ng/ml

System Monitoring Compounds						
1) SA Tetrachlo...	3.448	4.175	61400948	464.8E6	50.570	48.614
28) SA Decachlor...	8.207	9.370	59819397	269.2E6	47.349	47.500
Target Compounds						
2) A alpha-BHC	3.888	4.571	94294102	685.3E6	52.080	49.790
3) MA gamma-BHC...	4.171	4.861	86560499	619.2E6	51.840	49.520
4) MA Heptachlor	4.469	5.389	84891840	595.1E6	51.528	50.073
5) MB Aldrin	4.717	5.701	83018307	573.2E6	51.947	49.938
6) B beta-BHC	4.421	5.024	37517540	269.9E6	50.389	49.159
7) B delta-BHC	4.625	5.250	85493048	599.1E6	52.314	49.818
8) B Heptachlo...	5.161	6.089	76478928	514.9E6	51.140	49.303
9) A Endosulfan I	5.500	6.452	71704364	464.3E6	51.245	49.504
10) B gamma-Chl...	5.387	6.326	77390838	507.4E6	51.018	49.224
11) B alpha-Chl...	5.446	6.401	76137632	490.9E6	50.940	49.309
12) B 4,4'-DDE	5.612	6.550	71227092	461.8E6	52.064	49.831
13) MA Dieldrin	5.744	6.711	75064116	479.4E6	51.409	49.353
14) MA Endrin	6.002	6.931	63975339	368.0E6	48.565	47.557
15) B Endosulfa...	6.275	7.136	62762540	373.8E6	50.357	49.447
16) A 4,4'-DDD	6.129	7.042	62152155	378.2E6	52.706	51.205
17) MA 4,4'-DDT	6.370	7.345	58045088	357.6E6	48.292	48.674
18) B Endrin al...	6.446	7.260	49239594	294.8E6	49.599	48.709
19) B Endosulfa...	6.659	7.485	64337349	363.0E6	50.310	49.355
20) A Methoxychlor	6.921	7.798	32985196	174.4E6	47.596	47.837
21) B Endrin ke...	7.152	7.960	75157790	383.0E6	51.053	49.430
22) Mirex	7.336	8.427	56083787	261.4E6	47.321	47.689

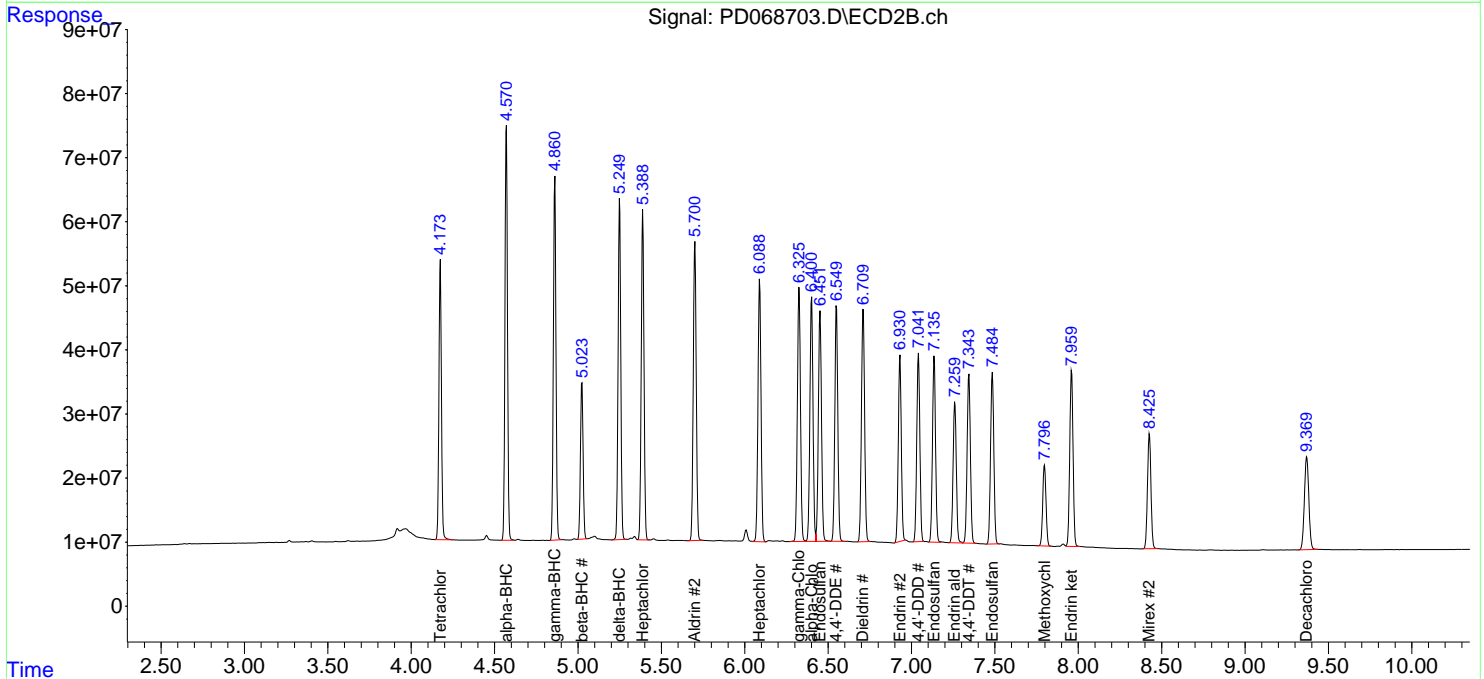
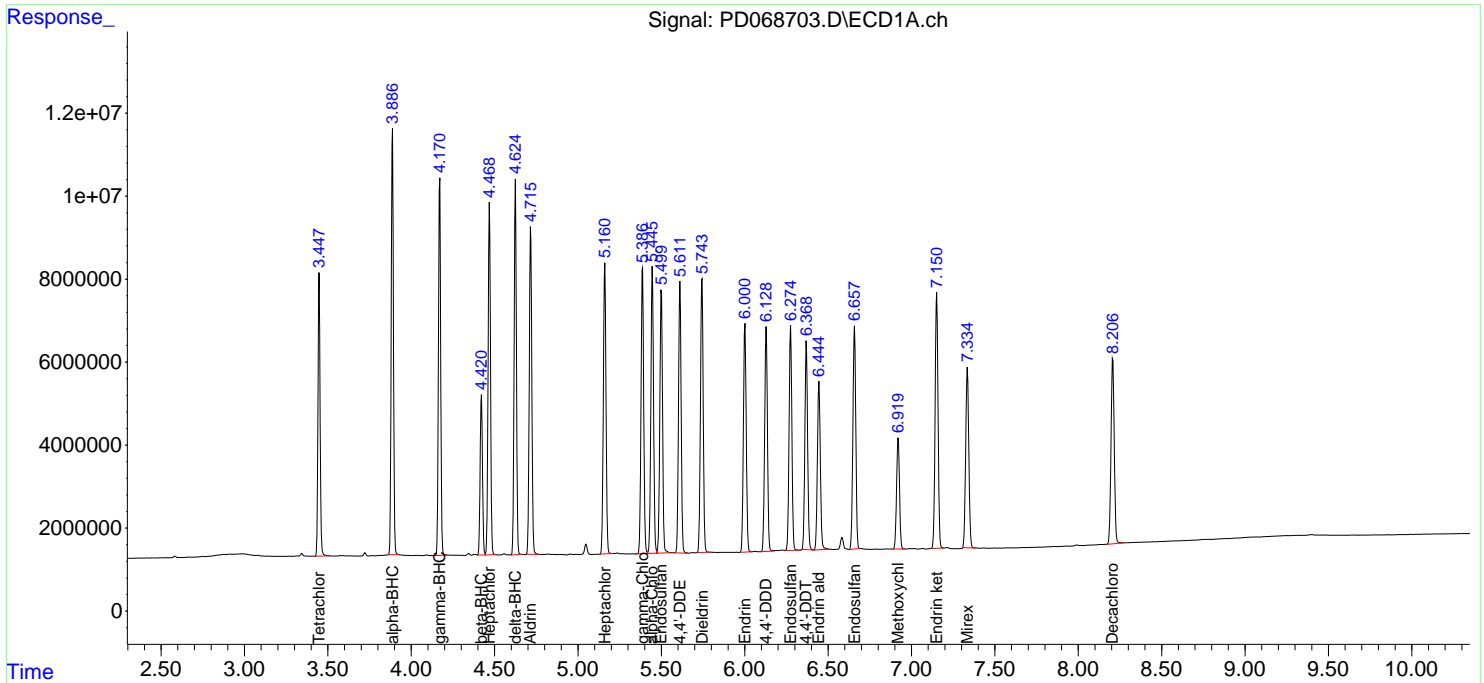
(f)=RT Delta > 1/2 Window (#)=Amounts differ by > 25% (m)=manual int.

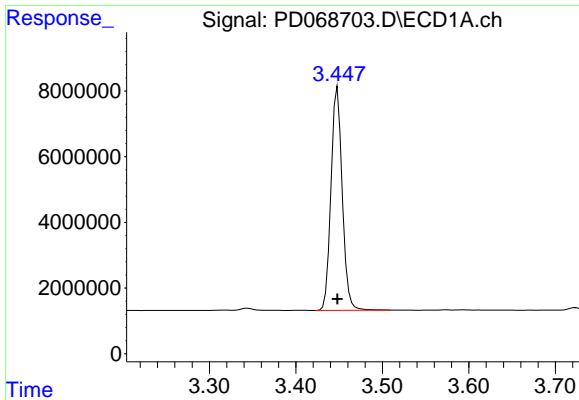
Data Path : Z:\pestpcbsrv\HPCHEM1\ECD_D\Data\PD031922\
 Data File : PD068703.D
 Signal(s) : Signal #1: ECD1A.ch Signal #2: ECD2B.ch
 Acq On : 18 Mar 2022 20:05
 Operator : AR\AJ
 Sample : PSTDCCC050
 Misc :
 ALS Vial : 4 Sample Multiplier: 1

Instrument :
 ECD_D
 ClientSampleId :
 PSTDCCC050

Integration File signal 1: autoint1.e
 Integration File signal 2: autoint2.e
 Quant Time: Mar 19 00:54:12 2022
 Quant Method : Z:\pestpcbsrv\HPCHEM1\ECD_D\Method\PD031222.M
 Quant Title : GC Extractables
 QLast Update : Mon Mar 14 03:30:32 2022
 Response via : Initial Calibration
 Integrator: ChemStation

Volume Inj. : 2 µl
 Signal #1 Phase : ZB-MR2 Signal #2 Phase: ZB-MR1
 Signal #1 Info : 30M x 0.32mm x0.2 Signal #2 Info : 30M x 0.32mm x 0.50µm

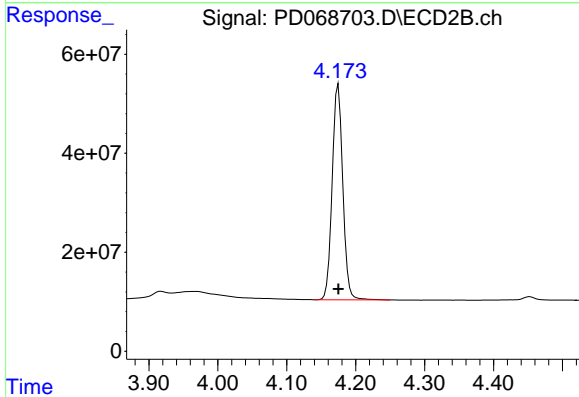




#1 Tetrachloro-m-xylene

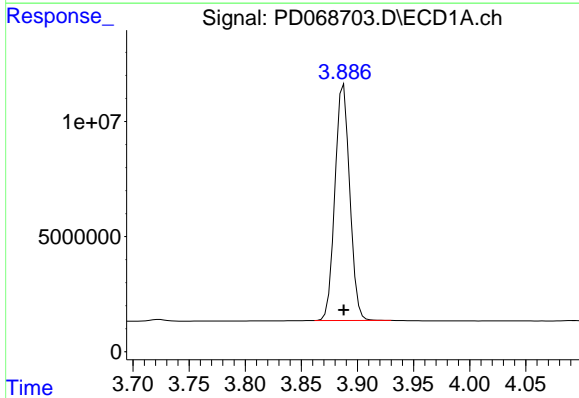
R.T.: 3.448 min
 Delta R.T.: 0.000 min
 Response: 61400948
 Conc: 50.57 ng/ml

Instrument :
 ECD_D
 ClientSampleId :
 PSTDCCC050



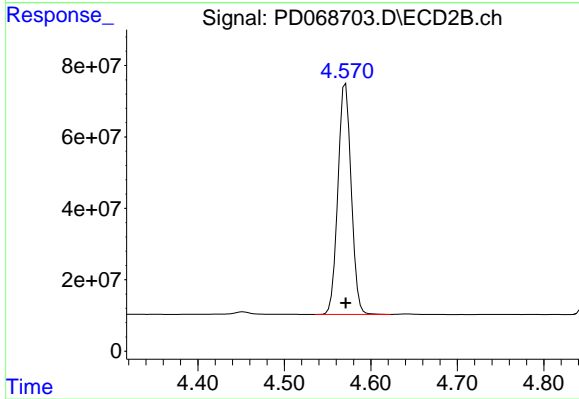
#1 Tetrachloro-m-xylene

R.T.: 4.175 min
 Delta R.T.: 0.000 min
 Response: 464787365
 Conc: 48.61 ng/ml



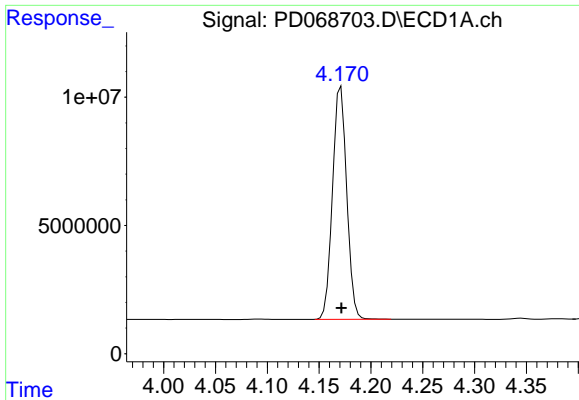
#2 alpha-BHC

R.T.: 3.888 min
 Delta R.T.: 0.000 min
 Response: 94294102
 Conc: 52.08 ng/ml



#2 alpha-BHC

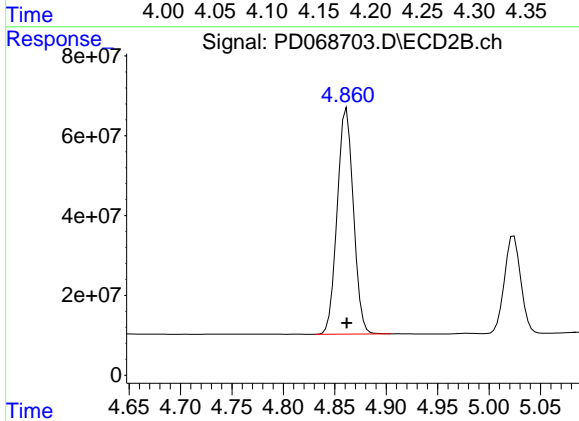
R.T.: 4.571 min
 Delta R.T.: 0.000 min
 Response: 685253475
 Conc: 49.79 ng/ml



#3 gamma-BHC (Lindane)

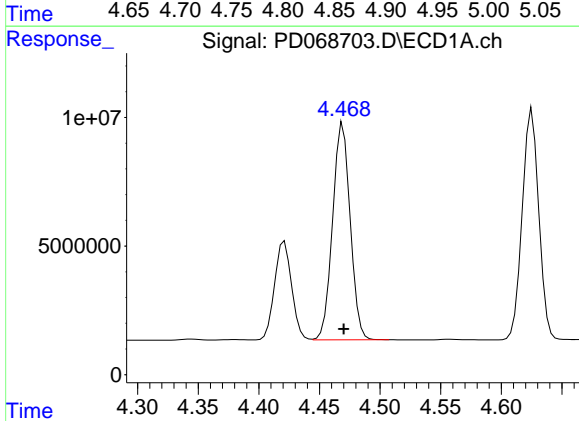
R.T.: 4.171 min
 Delta R.T.: 0.000 min
 Response: 86560499
 Conc: 51.84 ng/ml

Instrument :
 ECD_D
 ClientSampleId :
 PSTDCCC050



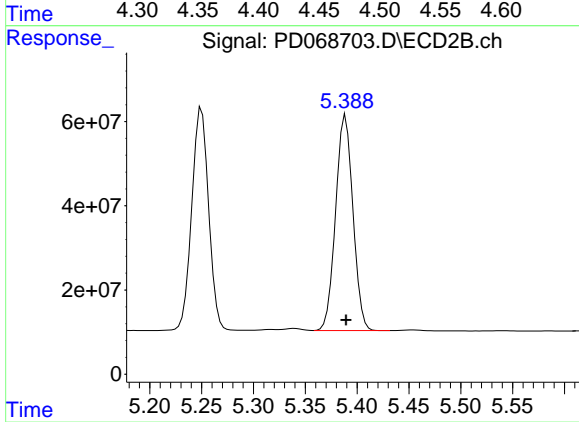
#3 gamma-BHC (Lindane)

R.T.: 4.861 min
 Delta R.T.: 0.000 min
 Response: 619154164
 Conc: 49.52 ng/ml



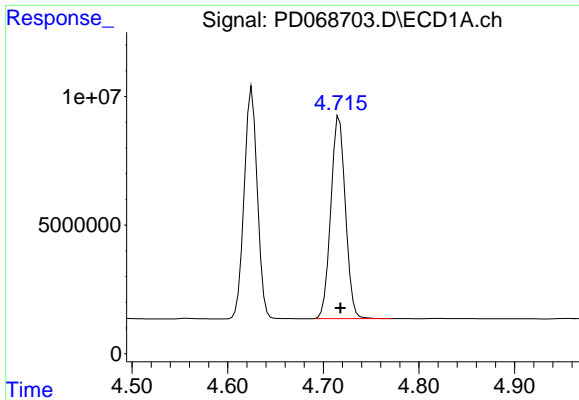
#4 Heptachlor

R.T.: 4.469 min
 Delta R.T.: 0.000 min
 Response: 84891840
 Conc: 51.53 ng/ml



#4 Heptachlor

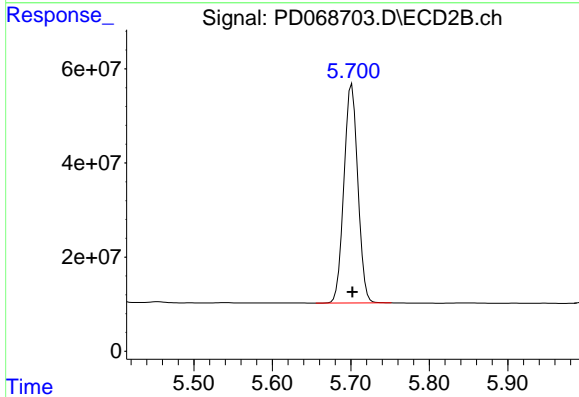
R.T.: 5.389 min
 Delta R.T.: 0.000 min
 Response: 595084535
 Conc: 50.07 ng/ml



#5 Aldrin

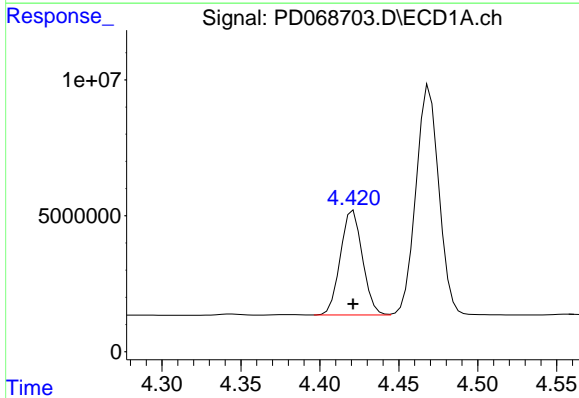
R.T.: 4.717 min
 Delta R.T.: -0.001 min
 Response: 83018307
 Conc: 51.95 ng/ml

Instrument :
 ECD_D
 ClientSampleId :
 PSTDCCC050



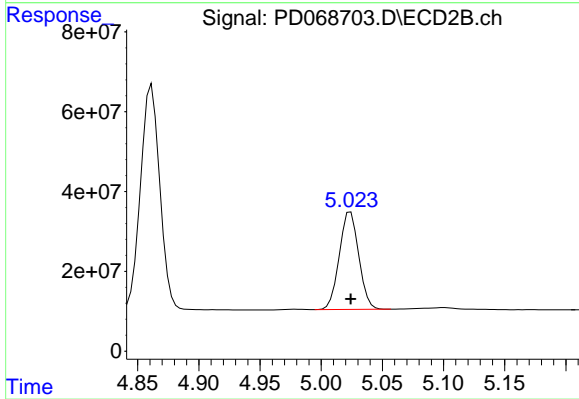
#5 Aldrin

R.T.: 5.701 min
 Delta R.T.: 0.000 min
 Response: 573232014
 Conc: 49.94 ng/ml



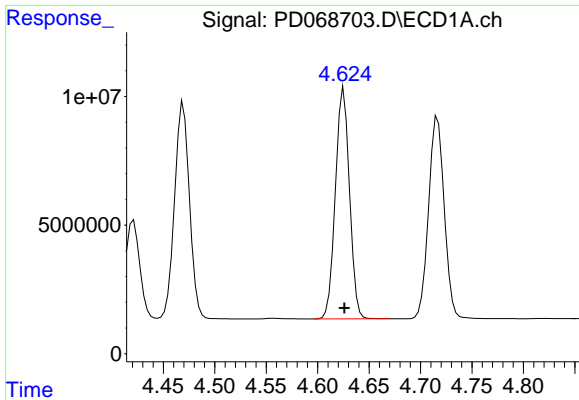
#6 beta-BHC

R.T.: 4.421 min
 Delta R.T.: 0.000 min
 Response: 37517540
 Conc: 50.39 ng/ml



#6 beta-BHC

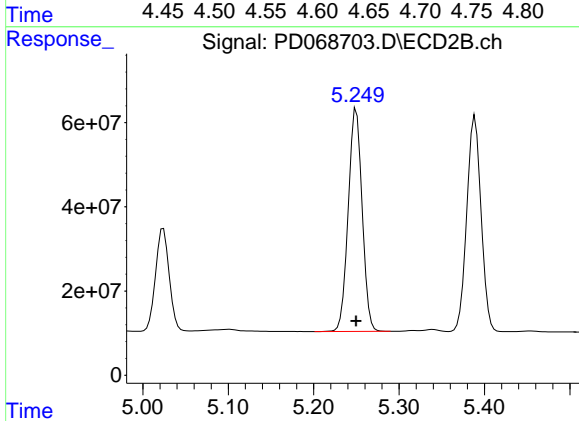
R.T.: 5.024 min
 Delta R.T.: 0.000 min
 Response: 269876155
 Conc: 49.16 ng/ml



#7 delta-BHC

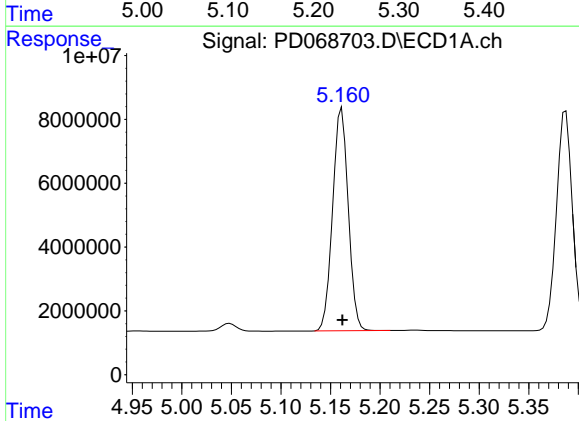
R.T.: 4.625 min
 Delta R.T.: 0.000 min
 Response: 85493048
 Conc: 52.31 ng/ml

Instrument :
 ECD_D
 ClientSampleId :
 PSTDCCC050



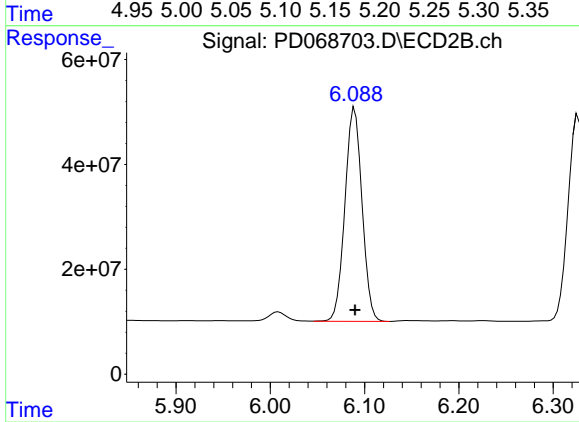
#7 delta-BHC

R.T.: 5.250 min
 Delta R.T.: 0.000 min
 Response: 599096231
 Conc: 49.82 ng/ml



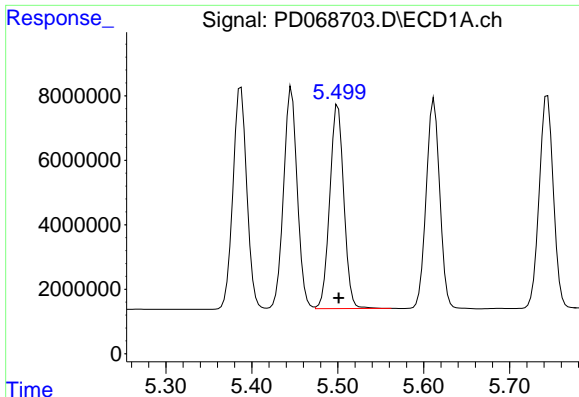
#8 Heptachlor epoxide

R.T.: 5.161 min
 Delta R.T.: 0.000 min
 Response: 76478928
 Conc: 51.14 ng/ml



#8 Heptachlor epoxide

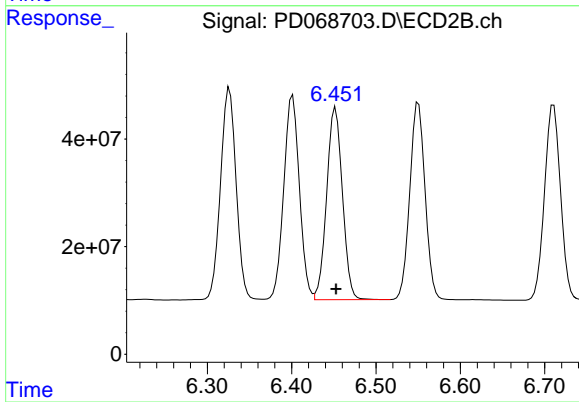
R.T.: 6.089 min
 Delta R.T.: 0.000 min
 Response: 514860979
 Conc: 49.30 ng/ml



#9 Endosulfan I

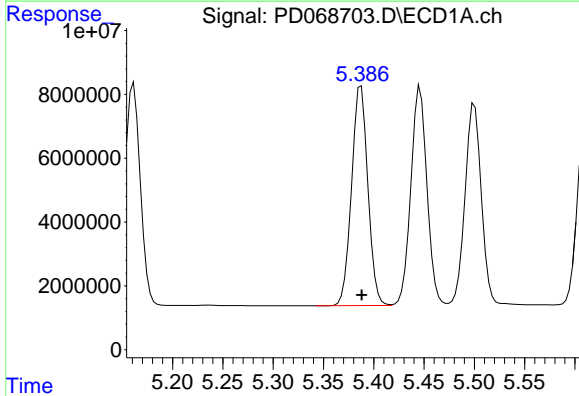
R.T.: 5.500 min
 Delta R.T.: 0.000 min
 Response: 71704364
 Conc: 51.24 ng/ml

Instrument :
 ECD_D
 ClientSampleId :
 PSTDCCC050



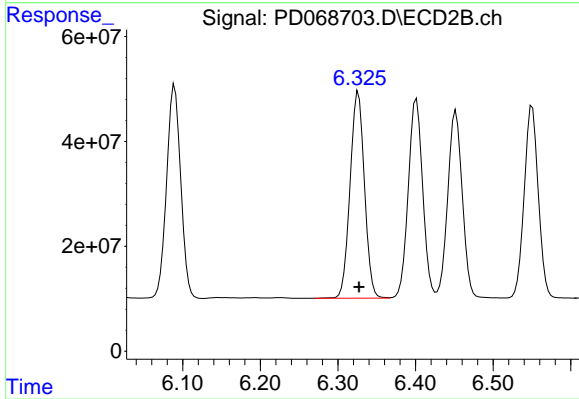
#9 Endosulfan I

R.T.: 6.452 min
 Delta R.T.: 0.000 min
 Response: 464259145
 Conc: 49.50 ng/ml



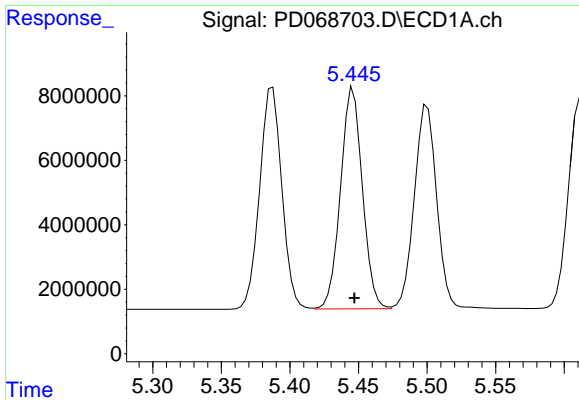
#10 gamma-Chlordane

R.T.: 5.387 min
 Delta R.T.: 0.000 min
 Response: 77390838
 Conc: 51.02 ng/ml



#10 gamma-Chlordane

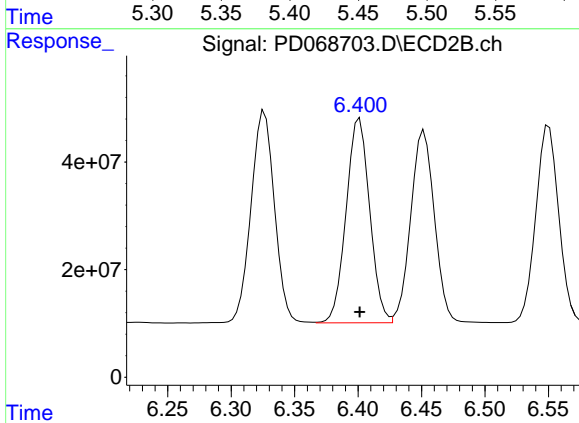
R.T.: 6.326 min
 Delta R.T.: 0.000 min
 Response: 507361357
 Conc: 49.22 ng/ml



#11 alpha-Chlordane

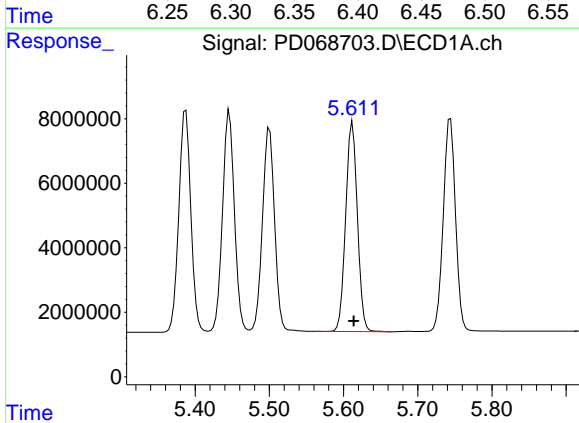
R.T.: 5.446 min
 Delta R.T.: 0.000 min
 Response: 76137632
 Conc: 50.94 ng/ml

Instrument :
 ECD_D
 ClientSampleId :
 PSTDCCC050



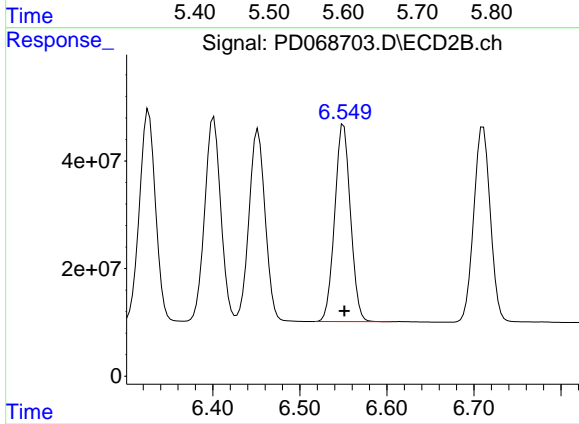
#11 alpha-Chlordane

R.T.: 6.401 min
 Delta R.T.: 0.000 min
 Response: 490928540
 Conc: 49.31 ng/ml



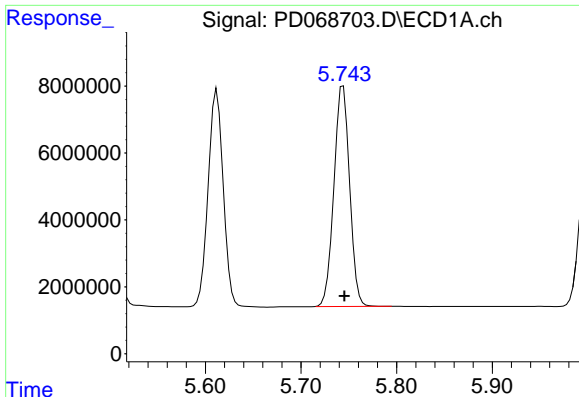
#12 4,4'-DDE

R.T.: 5.612 min
 Delta R.T.: -0.002 min
 Response: 71227092
 Conc: 52.06 ng/ml



#12 4,4'-DDE

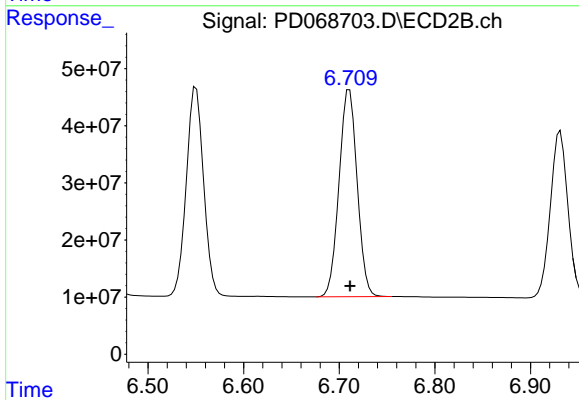
R.T.: 6.550 min
 Delta R.T.: 0.000 min
 Response: 461775986
 Conc: 49.83 ng/ml



#13 Dieldrin

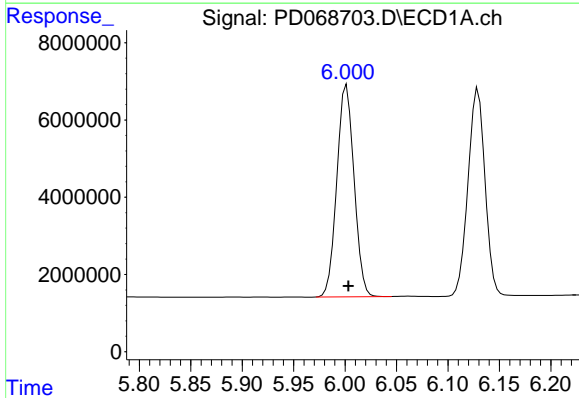
R.T.: 5.744 min
 Delta R.T.: -0.001 min
 Response: 75064116
 Conc: 51.41 ng/ml

Instrument :
 ECD_D
 ClientSampleId :
 PSTDCCC050



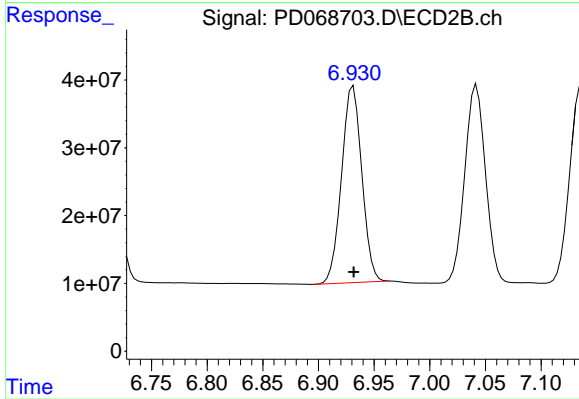
#13 Dieldrin

R.T.: 6.711 min
 Delta R.T.: 0.000 min
 Response: 479366851
 Conc: 49.35 ng/ml



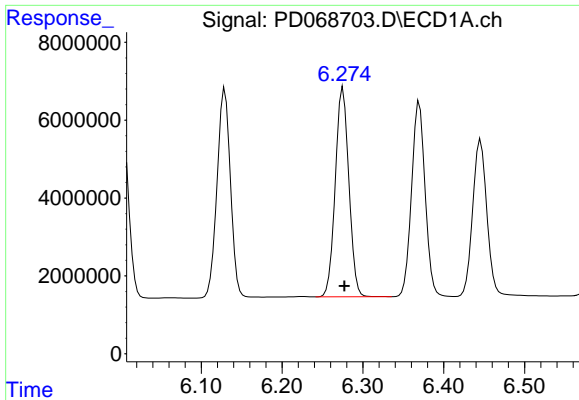
#14 Endrin

R.T.: 6.002 min
 Delta R.T.: -0.002 min
 Response: 63975339
 Conc: 48.56 ng/ml



#14 Endrin

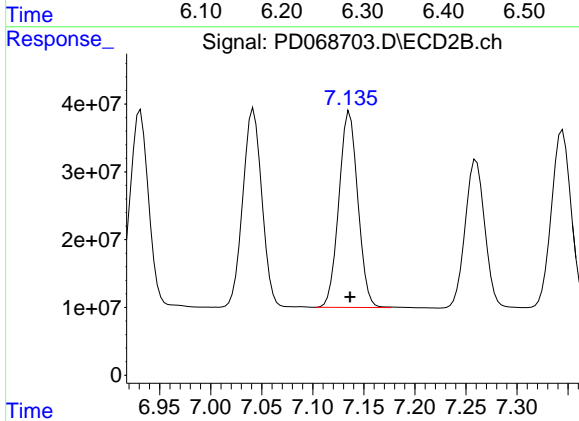
R.T.: 6.931 min
 Delta R.T.: 0.000 min
 Response: 367970605
 Conc: 47.56 ng/ml



#15 Endosulfan II

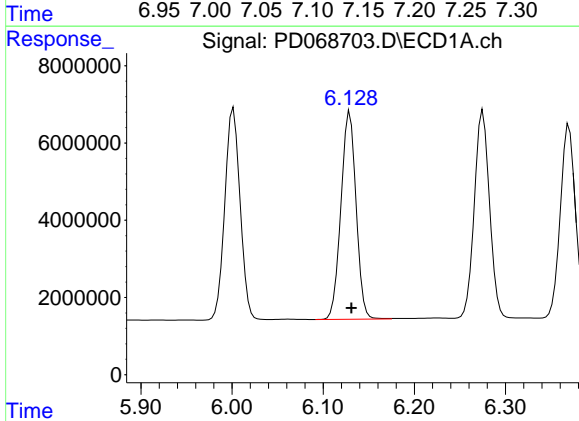
R.T.: 6.275 min
 Delta R.T.: -0.002 min
 Response: 62762540
 Conc: 50.36 ng/ml

Instrument :
 ECD_D
 ClientSampleId :
 PSTDCCC050



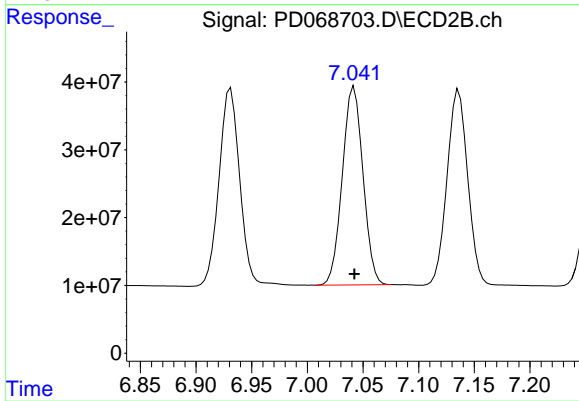
#15 Endosulfan II

R.T.: 7.136 min
 Delta R.T.: 0.000 min
 Response: 373752861
 Conc: 49.45 ng/ml



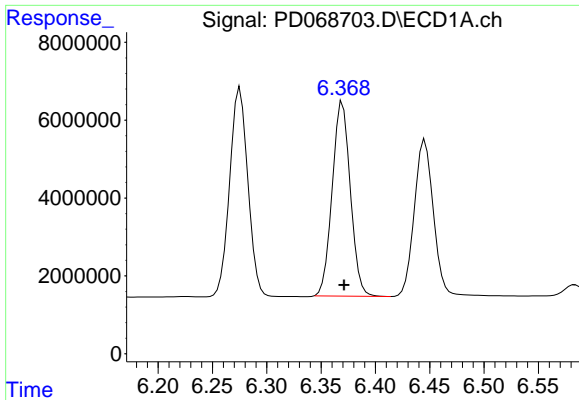
#16 4,4'-DDD

R.T.: 6.129 min
 Delta R.T.: -0.001 min
 Response: 62152155
 Conc: 52.71 ng/ml



#16 4,4'-DDD

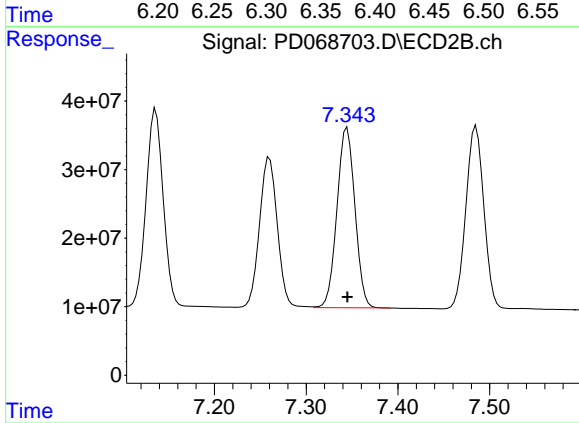
R.T.: 7.042 min
 Delta R.T.: 0.000 min
 Response: 378160719
 Conc: 51.20 ng/ml



#17 4,4'-DDT

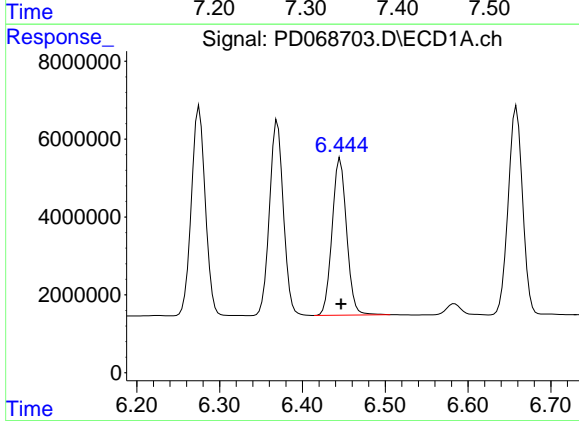
R.T.: 6.370 min
Delta R.T.: -0.001 min
Response: 58045088
Conc: 48.29 ng/ml

Instrument :
ECD_D
ClientSampleId :
PSTDCCC050



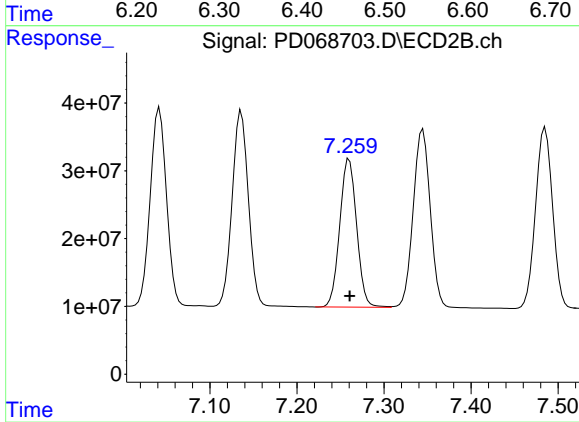
#17 4,4'-DDT

R.T.: 7.345 min
Delta R.T.: 0.000 min
Response: 357599706
Conc: 48.67 ng/ml



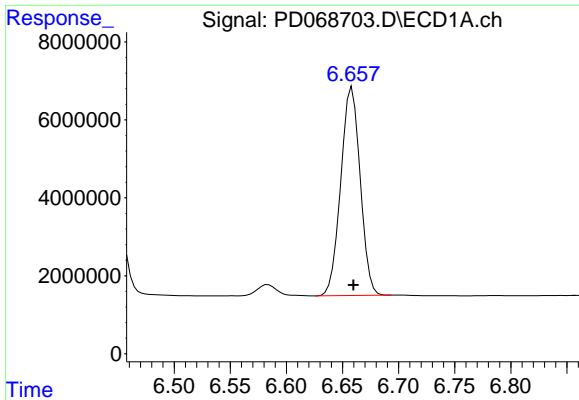
#18 Endrin aldehyde

R.T.: 6.446 min
Delta R.T.: -0.001 min
Response: 49239594
Conc: 49.60 ng/ml



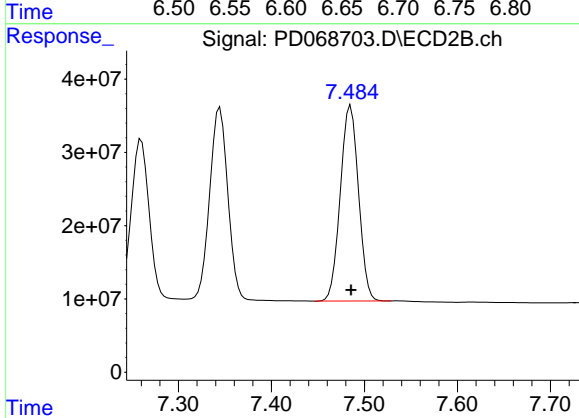
#18 Endrin aldehyde

R.T.: 7.260 min
Delta R.T.: 0.000 min
Response: 294773917
Conc: 48.71 ng/ml

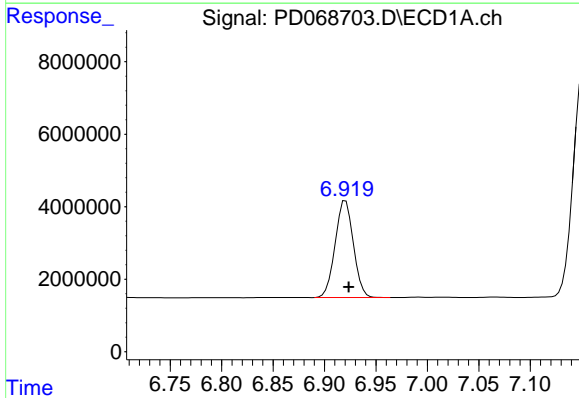


#19 Endosulfan Sulfate
 R.T.: 6.659 min
 Delta R.T.: -0.001 min
 Response: 64337349
 Conc: 50.31 ng/ml

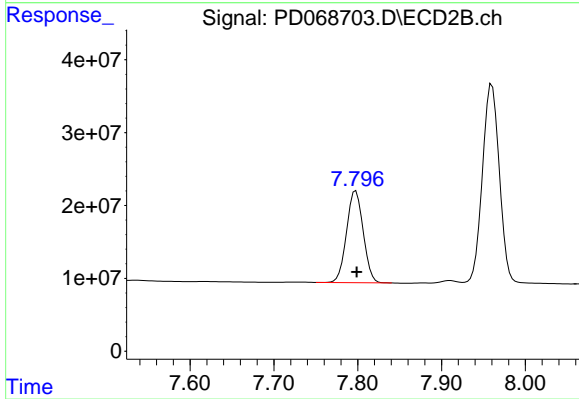
Instrument :
 ECD_D
 ClientSampleId :
 PSTDCCC050



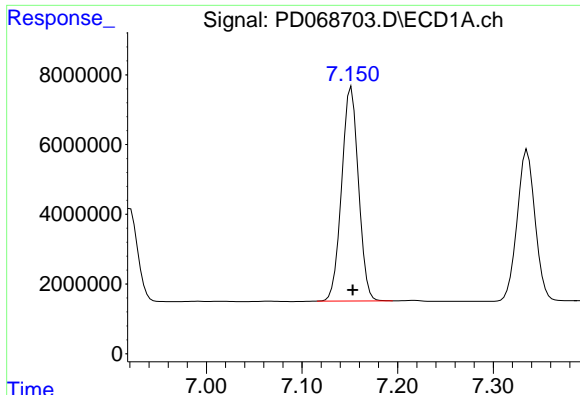
#19 Endosulfan Sulfate
 R.T.: 7.485 min
 Delta R.T.: 0.000 min
 Response: 363007345
 Conc: 49.35 ng/ml



#20 Methoxychlor
 R.T.: 6.921 min
 Delta R.T.: -0.003 min
 Response: 32985196
 Conc: 47.60 ng/ml



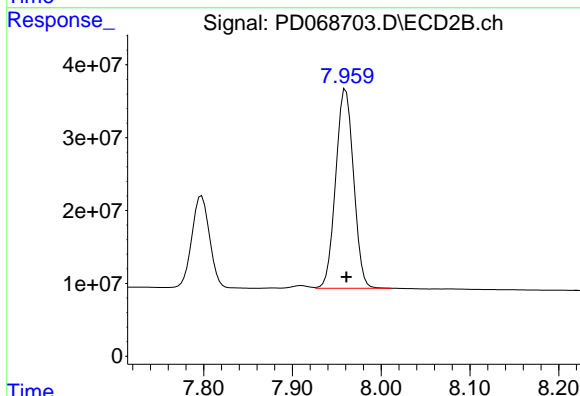
#20 Methoxychlor
 R.T.: 7.798 min
 Delta R.T.: -0.001 min
 Response: 174380961
 Conc: 47.84 ng/ml



#21 Endrin ketone

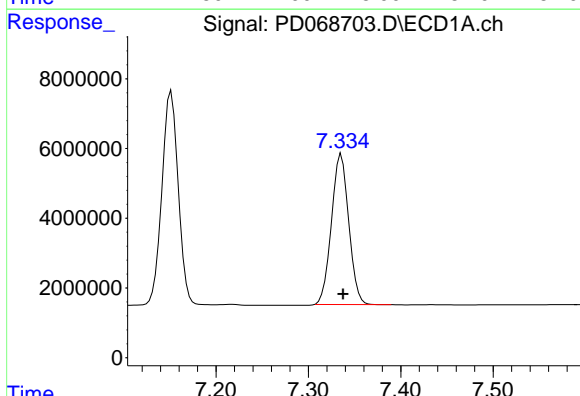
R.T.: 7.152 min
 Delta R.T.: -0.001 min
 Response: 75157790
 Conc: 51.05 ng/ml

Instrument :
 ECD_D
 ClientSampleId :
 PSTDCCC050



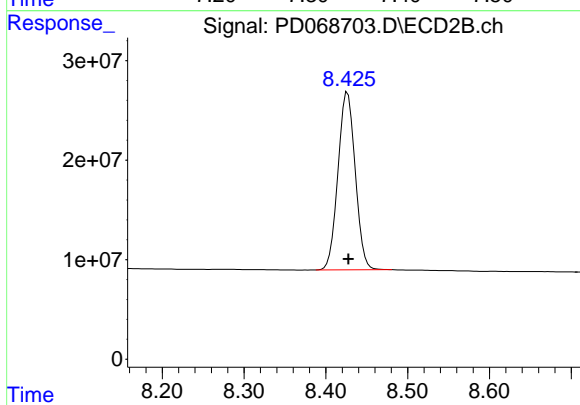
#21 Endrin ketone

R.T.: 7.960 min
 Delta R.T.: 0.000 min
 Response: 383019663
 Conc: 49.43 ng/ml



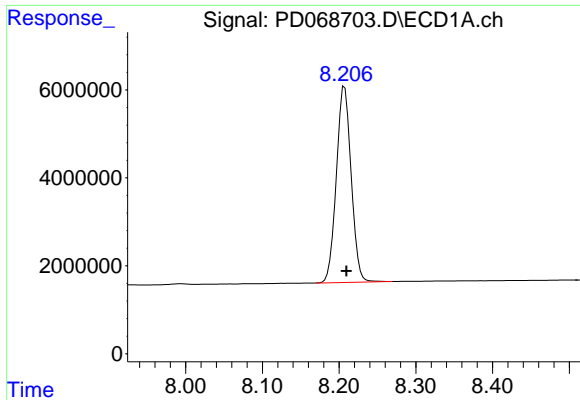
#22 Mirex

R.T.: 7.336 min
 Delta R.T.: -0.002 min
 Response: 56083787
 Conc: 47.32 ng/ml



#22 Mirex

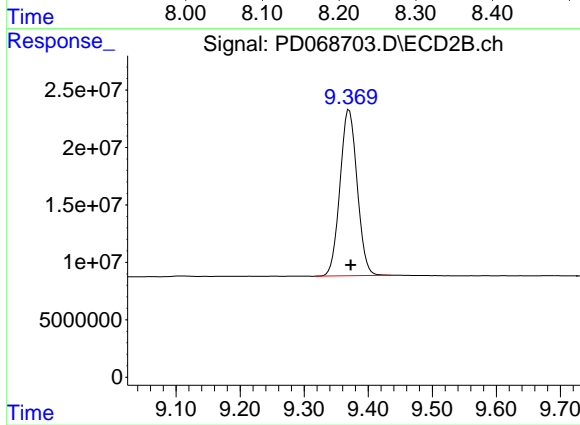
R.T.: 8.427 min
 Delta R.T.: 0.000 min
 Response: 261400922
 Conc: 47.69 ng/ml



#28 Decachlorobiphenyl

R.T.: 8.207 min
 Delta R.T.: -0.002 min
 Response: 59819397
 Conc: 47.35 ng/ml

Instrument :
 ECD_D
 ClientSampleId :
 PSTDCCC050



#28 Decachlorobiphenyl

R.T.: 9.370 min
 Delta R.T.: -0.002 min
 Response: 269167084
 Conc: 47.50 ng/ml