

Data Path : Z:\pestpcbsrv\HPCHEM1\ECD\_D\Data\PD032023\  
 Data File : PD074297.D  
 Signal(s) : Signal #1: ECD1A.ch Signal #2: ECD2B.ch  
 Acq On : 20 Mar 2023 15:05  
 Operator : AR\AJ  
 Sample : 01627-09  
 Misc : TOX MDL 50PPB WATER  
 ALS Vial : 13 Sample Multiplier: 1

Instrument :  
 ECD\_D  
 ClientSampleId :

Integration File signal 1: autoint1.e  
 Integration File signal 2: autoint2.e  
 Quant Time: Mar 21 04:41:26 2023  
 Quant Method : Z:\pestpcbsrv\HPCHEM1\ECD\_D\Method\DTX031423.M  
 Quant Title : GC Extractables  
 QLast Update : Wed Mar 15 05:13:38 2023  
 Response via : Initial Calibration  
 Integrator: ChemStation

Volume Inj. : 1 µl  
 Signal #1 Phase : ZB-MR1 Signal #2 Phase: ZB-MR2  
 Signal #1 Info : 30M x 0.32mm x 0. Signal #2 Info : 30M x 0.32mm x 0.25µm

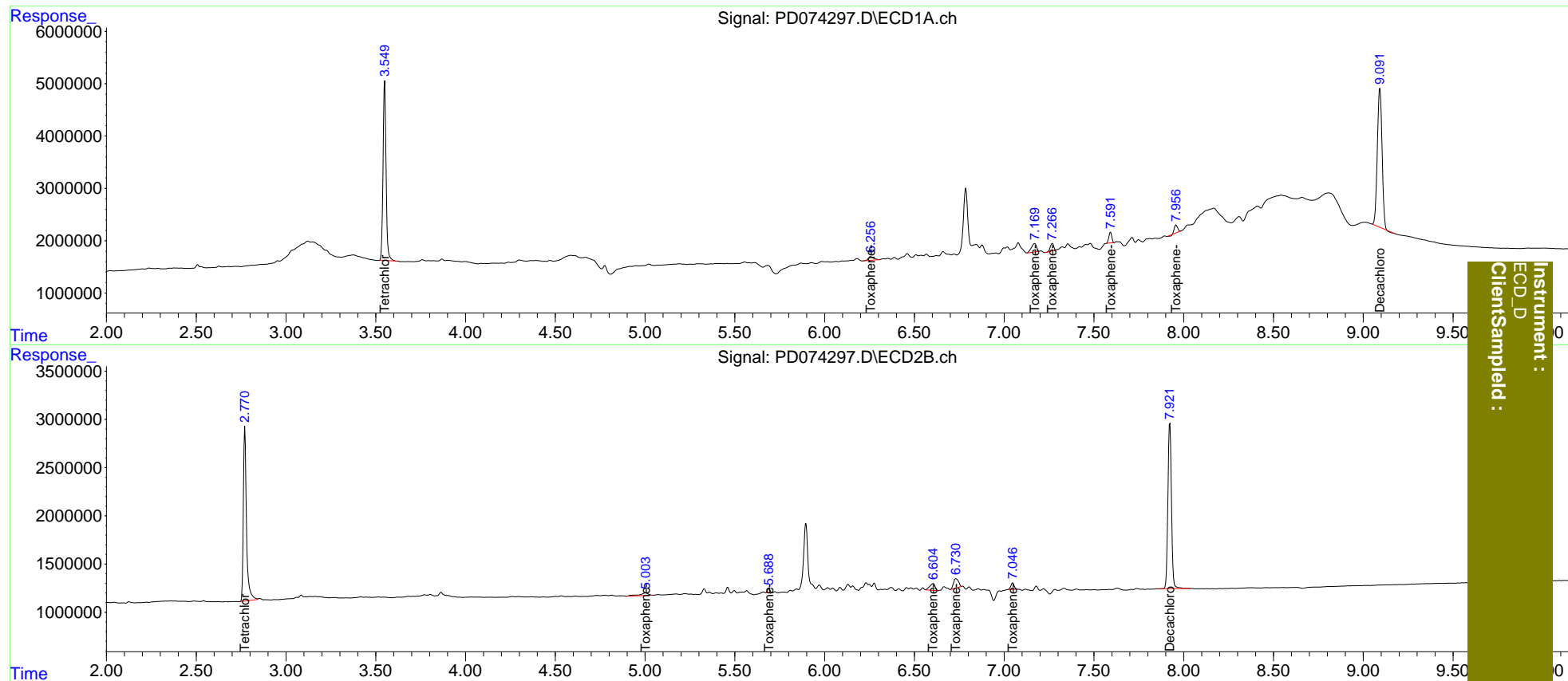
Compound	RT#1	RT#2	Resp#1	Resp#2	ng/ml	ng/ml
-----						
System Monitoring Compounds						
1) SA Tetrachlo...	3.550	2.771	40399901	21717549	17.984	18.700
7) SA Decachlor...	9.093	7.923	48361573	23850326	18.481	19.567
Target Compounds						
2) Toxaphene-1	6.257	5.004	1457047	964706	59.106	103.896 #
3) Toxaphene-2	7.170	5.689	3183217	424204	52.641	44.400
4) Toxaphene-3	7.269	6.605	1827462	1438446	52.639	45.701
5) Toxaphene-4	7.593	6.732	2332201	1846389	53.619	44.194
6) Toxaphene-5	7.958	7.048	1767761	854834	38.162	48.325 #
-----						

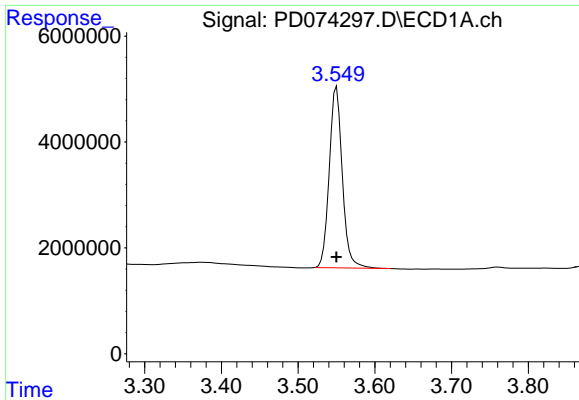
(f)=RT Delta > 1/2 Window (#)=Amounts differ by > 25% (m)=manual int.

Data Path : Z:\pestpcbsrv\HPCHEM1\ECD\_D\Data\PD032023\  
 Data File : PD074297.D  
 Signal(s) : Signal #1: ECD1A.ch Signal #2: ECD2B.ch  
 Acq On : 20 Mar 2023 15:05  
 Operator : AR\AJ  
 Sample : 01627-09  
 Misc : TOX MDL 50PPB WATER  
 ALS Vial : 13 Sample Multiplier: 1

Integration File signal 1: autoint1.e  
 Integration File signal 2: autoint2.e  
 Quant Time: Mar 21 04:41:26 2023  
 Quant Method : Z:\pestpcbsrv\HPCHEM1\ECD\_D\Method\DTX031423.M  
 Quant Title : GC Extractables  
 QLast Update : Wed Mar 15 05:13:38 2023  
 Response via : Initial Calibration  
 Integrator: ChemStation

Volume Inj. : 1 µl  
 Signal #1 Phase : ZB-MR1 Signal #2 Phase: ZB-MR2  
 Signal #1 Info : 30M x 0.32mm x 0. Signal #2 Info : 30M x 0.32mm x0.25µm

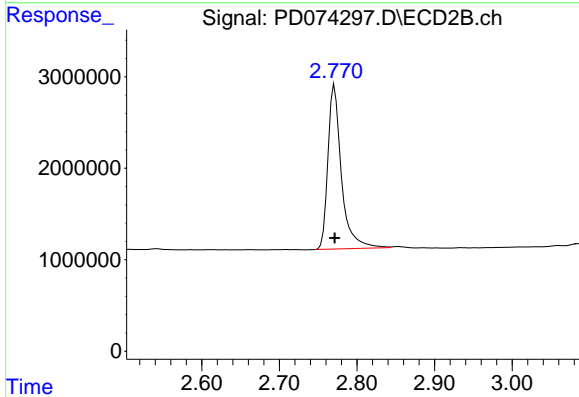




#1 Tetrachloro-m-xylene

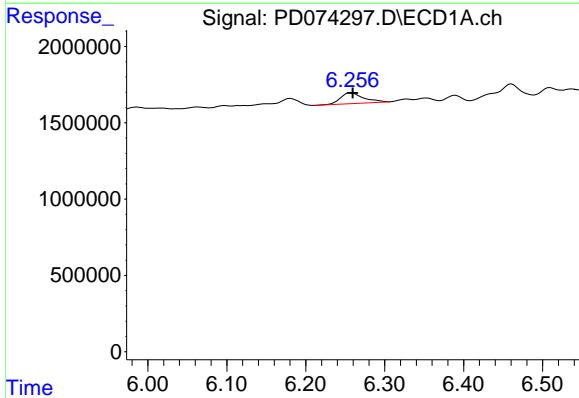
R.T.: 3.550 min  
 Delta R.T.: 0.000 min  
 Response: 40399901  
 Conc: 17.98 ng/ml

Instrument :  
 ECD\_D  
 ClientSampleId :



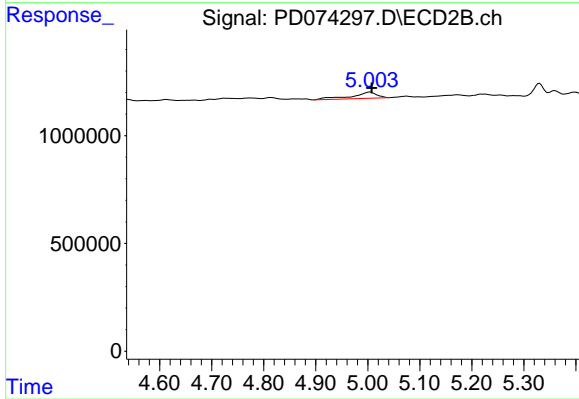
#1 Tetrachloro-m-xylene

R.T.: 2.771 min  
 Delta R.T.: 0.000 min  
 Response: 21717549  
 Conc: 18.70 ng/ml



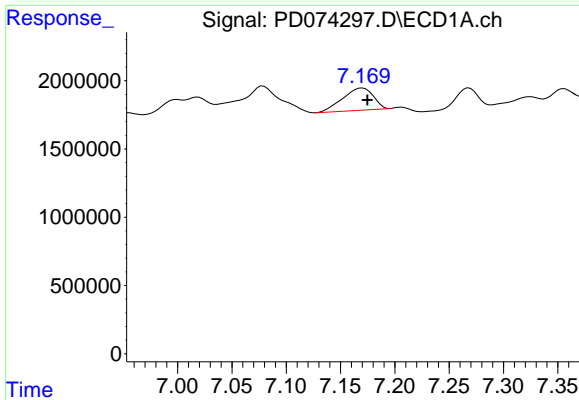
#2 Toxaphene-1

R.T.: 6.257 min  
 Delta R.T.: -0.002 min  
 Response: 1457047  
 Conc: 59.11 ng/ml



#2 Toxaphene-1

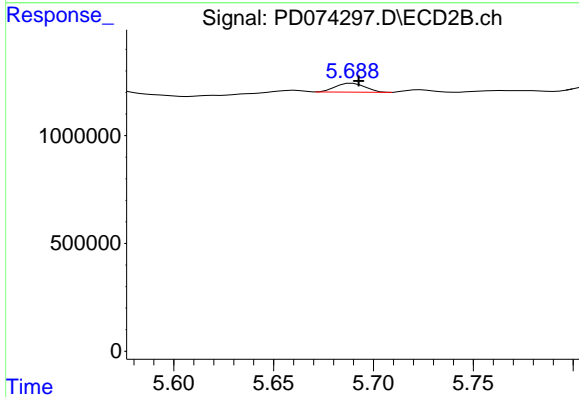
R.T.: 5.004 min  
 Delta R.T.: -0.003 min  
 Response: 964706  
 Conc: 103.90 ng/ml



#3 Toxaphene-2

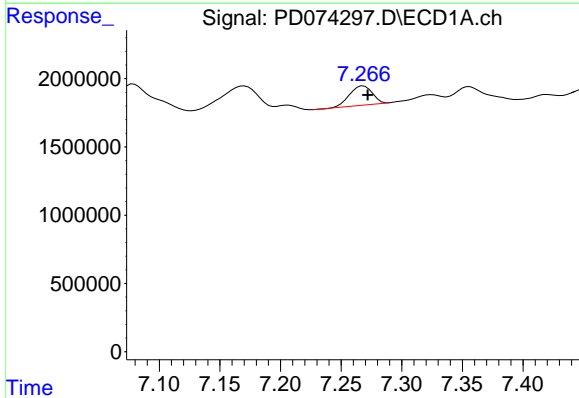
R.T.: 7.170 min  
 Delta R.T.: -0.004 min  
 Response: 3183217  
 Conc: 52.64 ng/ml

Instrument :  
 ECD\_D  
 ClientSampleId :



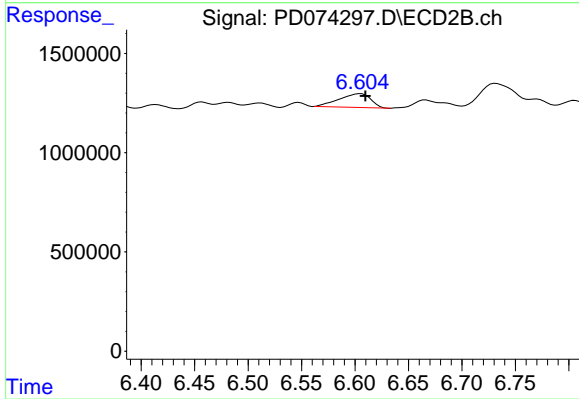
#3 Toxaphene-2

R.T.: 5.689 min  
 Delta R.T.: -0.003 min  
 Response: 424204  
 Conc: 44.40 ng/ml



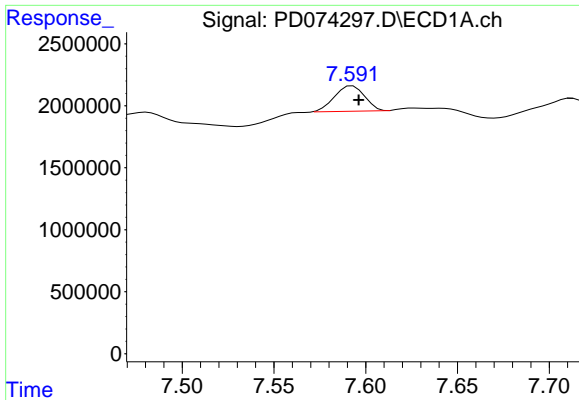
#4 Toxaphene-3

R.T.: 7.269 min  
 Delta R.T.: -0.003 min  
 Response: 1827462  
 Conc: 52.64 ng/ml



#4 Toxaphene-3

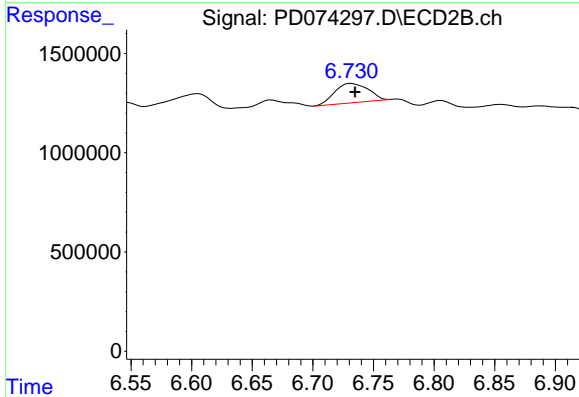
R.T.: 6.605 min  
 Delta R.T.: -0.005 min  
 Response: 1438446  
 Conc: 45.70 ng/ml



#5 Toxaphene-4

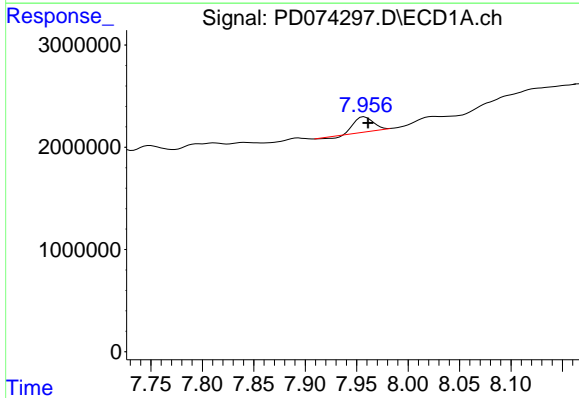
R.T.: 7.593 min  
 Delta R.T.: -0.003 min  
 Response: 2332201  
 Conc: 53.62 ng/ml

Instrument :  
 ECD\_D  
 ClientSampleId :



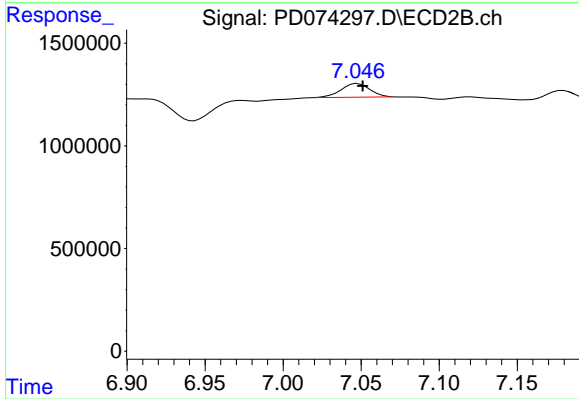
#5 Toxaphene-4

R.T.: 6.732 min  
 Delta R.T.: -0.003 min  
 Response: 1846389  
 Conc: 44.19 ng/ml



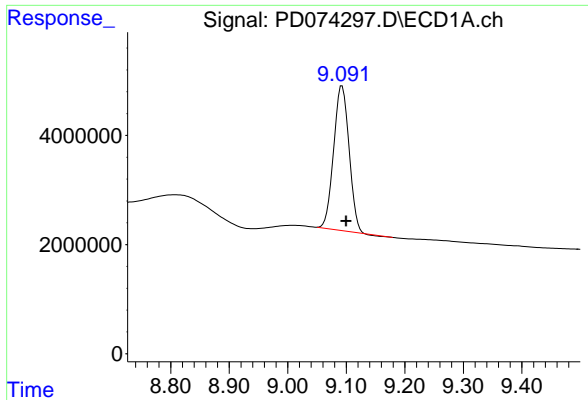
#6 Toxaphene-5

R.T.: 7.958 min  
 Delta R.T.: -0.004 min  
 Response: 1767761  
 Conc: 38.16 ng/ml



#6 Toxaphene-5

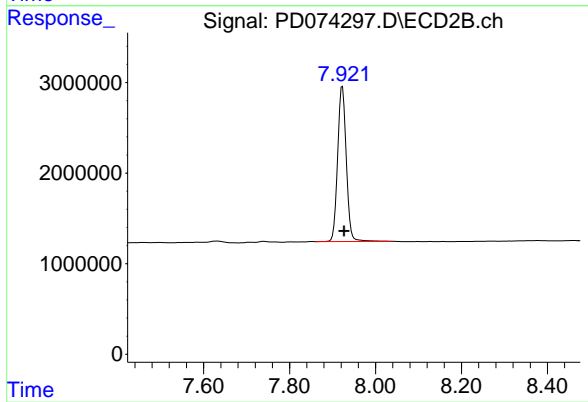
R.T.: 7.048 min  
 Delta R.T.: -0.003 min  
 Response: 854834  
 Conc: 48.32 ng/ml



#7 Decachlorobiphenyl

R.T.: 9.093 min  
Delta R.T.: -0.007 min  
Response: 48361573  
Conc: 18.48 ng/ml

Instrument :  
ECD\_D  
ClientSampleId :



#7 Decachlorobiphenyl

R.T.: 7.923 min  
Delta R.T.: -0.004 min  
Response: 23850326  
Conc: 19.57 ng/ml