

Data Path : Z:\pestpcbsrv\HPCHEM1\ECD_D\Data\PD032119\
 Data File : PD051935.D
 Signal(s) : Signal #1: ECD1A.CH Signal #2: ECD2B.CH
 Acq On : 21 Mar 2019 16:59
 Operator : AJ\SJ
 Sample : INDB201
 Misc :
 ALS Vial : 12 Sample Multiplier: 1

Instrument :
 ECD_D
 ClientSampleId :

Integration File signal 1: autoint1.e
 Integration File signal 2: autoint2.e
 Quant Time: Mar 22 07:21:41 2019
 Quant Method : Z:\pestpcbsrv\HPCHEM1\ECD_D\Method\PD032119CLP.M
 Quant Title : GC Extractables
 QLast Update : Fri Mar 22 07:19:22 2019
 Response via : Initial Calibration
 Integrator: ChemStation 6890 Scale Mode: Large solvent peaks clipped

Volume Inj. : 1 µl
 Signal #1 Phase : ZB-MR2 Signal #2 Phase: ZB-MR1
 Signal #1 Info : 30M x 0.32mm x0.2 Signal #2 Info : 30M x 0.32mm x 0.50µm

Compound	RT#1	RT#2	Resp#1	Resp#2	ng/ml	ng/ml

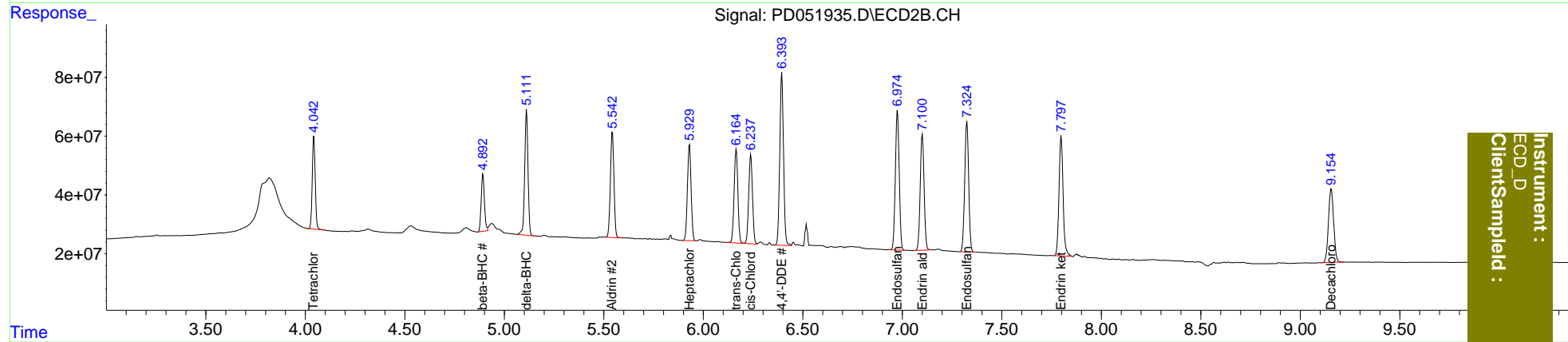
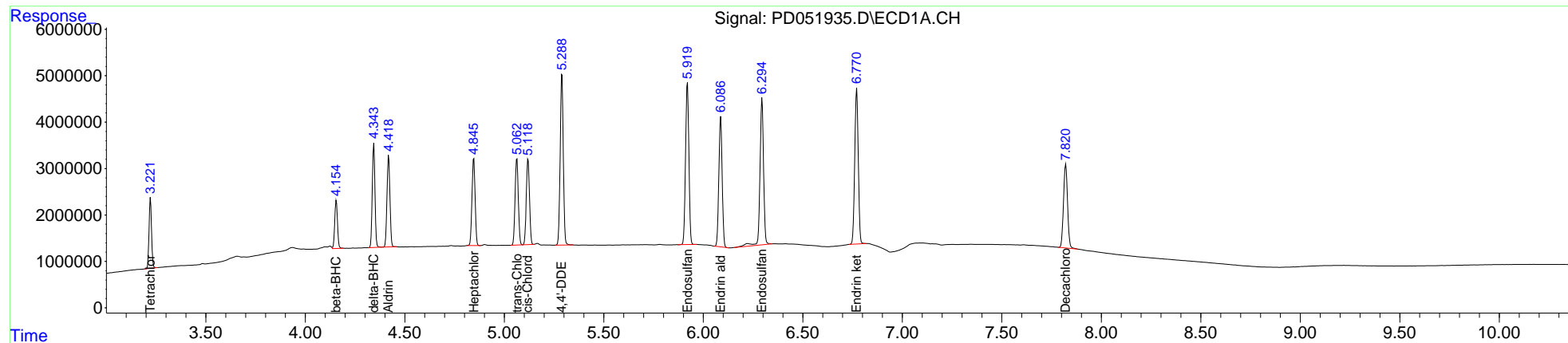
System Monitoring Compounds						
1) SA Tetrachlo...	3.222	4.043	13483190	333.0E6	9.551	10.197
27) SA Decachlor...	7.821	9.156	25380713	457.2E6	22.261	22.838
Target Compounds						
5) MB Aldrin	4.419	5.543	20096461	449.3E6	9.043	10.058
6) B beta-BHC	4.156	4.893	9943249	220.0E6	9.989	10.202
7) B delta-BHC	4.344	5.112	21124827	494.4E6	9.234	10.249
8) B Heptachlo...	4.847	5.931	20315971	419.9E6	9.290	10.226
10) B trans-Chl...	5.063	6.166	20834130	421.1E6	9.226	10.035
11) B cis-Chlor...	5.120	6.239	20538472	402.1E6	9.260	10.047
12) B 4,4'-DDE	5.290	6.395	40395657	770.0E6	17.909	20.537
15) B Endosulfa...	5.920	6.976	40321117	641.7E6	18.719	20.466
18) B Endrin al...	6.088	7.101	32628449	534.9E6	19.245	20.676
19) B Endosulfa...	6.295	7.325	39907518	615.5E6	20.852	21.183
21) B Endrin ke...	6.771	7.799	41033415	584.6E6	19.657	21.760

(f)=RT Delta > 1/2 Window (#)=Amounts differ by > 25% (m)=manual int.

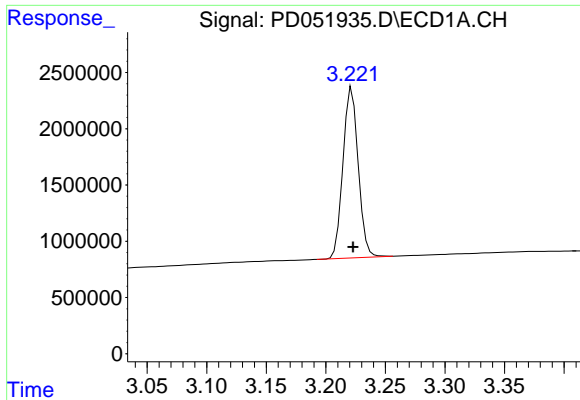
Data Path : Z:\pestpcbsrv\HPCHEM1\ECD_D\Data\PD032119\
 Data File : PD051935.D
 Signal(s) : Signal #1: ECD1A.CH Signal #2: ECD2B.CH
 Acq On : 21 Mar 2019 16:59
 Operator : AJ\SJ
 Sample : INDB201
 Misc :
 ALS Vial : 12 Sample Multiplier: 1

Integration File signal 1: autoint1.e
 Integration File signal 2: autoint2.e
 Quant Time: Mar 22 07:21:41 2019
 Quant Method : Z:\pestpcbsrv\HPCHEM1\ECD_D\Method\PD032119CLP.M
 Quant Title : GC Extractables
 QLast Update : Fri Mar 22 07:19:22 2019
 Response via : Initial Calibration
 Integrator: ChemStation 6890 Scale Mode: Large solvent peaks clipped

Volume Inj. : 1 µl
 Signal #1 Phase : ZB-MR2 Signal #2 Phase: ZB-MR1
 Signal #1 Info : 30M x 0.32mm x0.2 Signal #2 Info : 30M x 0.32mm x 0.50µm

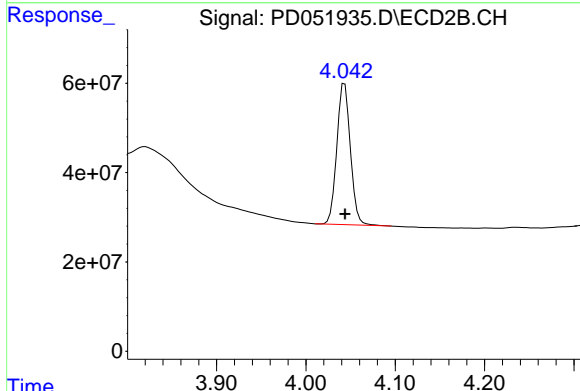


Instrument :
 ECD_D
 ClientSampleId :

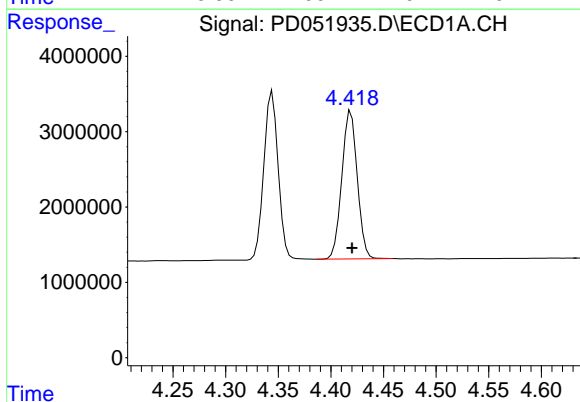


#1 Tetrachloro-m-xylene
 R.T.: 3.222 min
 Delta R.T.: 0.000 min
 Response: 13483190
 Conc: 9.55 ng/ml

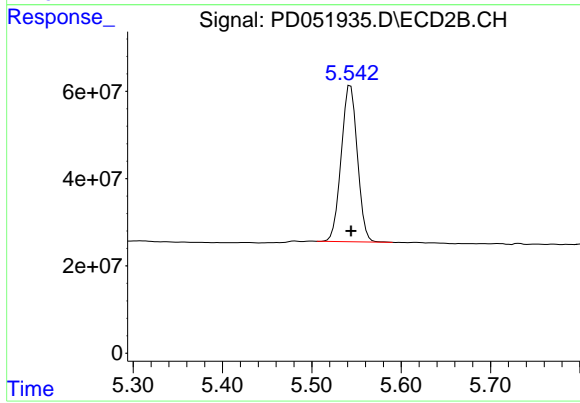
Instrument :
 ECD_D
 ClientSampled :



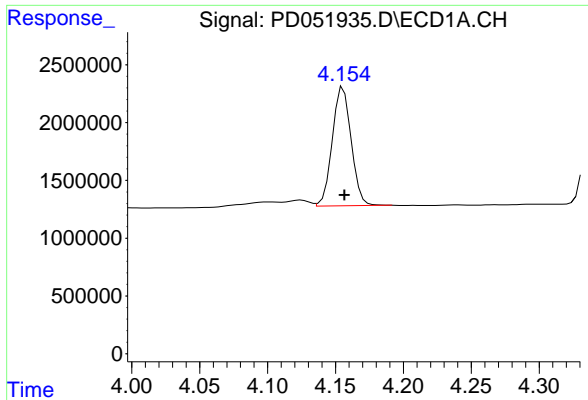
#1 Tetrachloro-m-xylene
 R.T.: 4.043 min
 Delta R.T.: 0.000 min
 Response: 332985240
 Conc: 10.20 ng/ml



#5 Aldrin
 R.T.: 4.419 min
 Delta R.T.: -0.001 min
 Response: 20096461
 Conc: 9.04 ng/ml

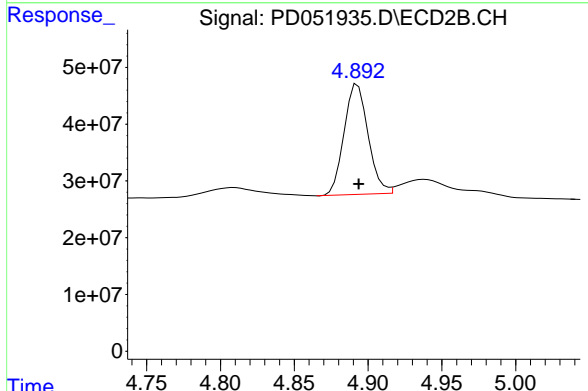


#5 Aldrin
 R.T.: 5.543 min
 Delta R.T.: 0.000 min
 Response: 449287393
 Conc: 10.06 ng/ml

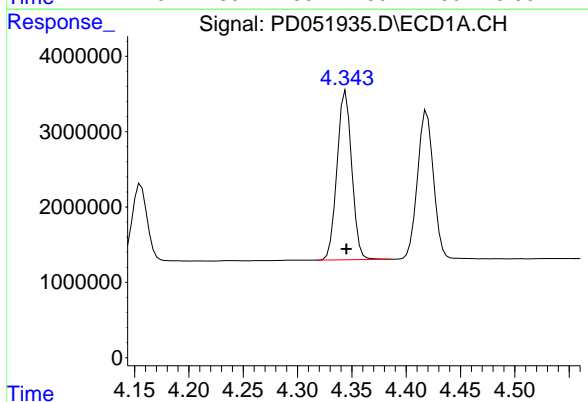


#6 beta-BHC
 R.T.: 4.156 min
 Delta R.T.: 0.000 min
 Response: 9943249
 Conc: 9.99 ng/ml

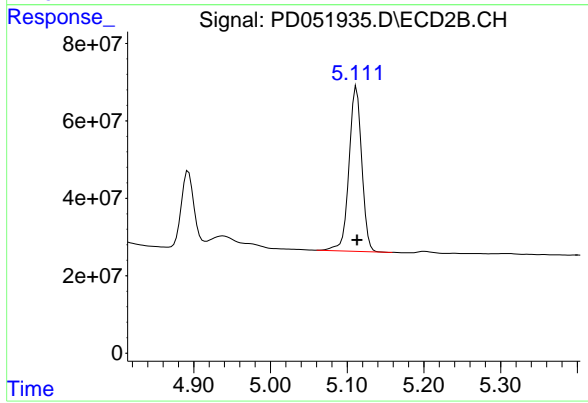
Instrument :
 ECD_D
 ClientSampleId :



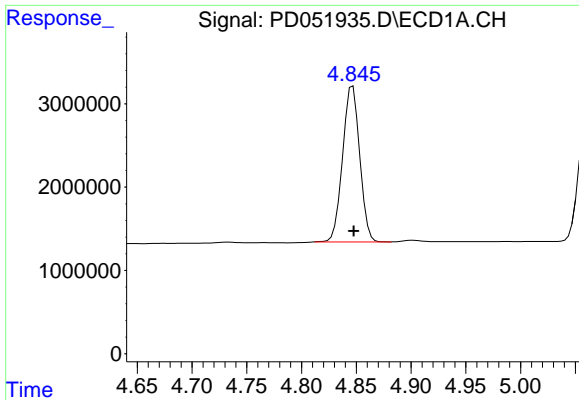
#6 beta-BHC
 R.T.: 4.893 min
 Delta R.T.: 0.000 min
 Response: 220021873
 Conc: 10.20 ng/ml



#7 delta-BHC
 R.T.: 4.344 min
 Delta R.T.: 0.000 min
 Response: 21124827
 Conc: 9.23 ng/ml

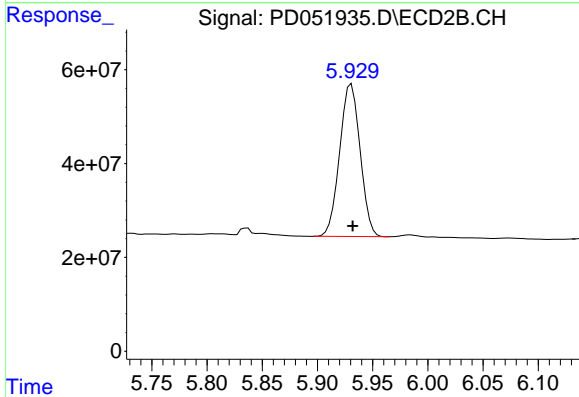


#7 delta-BHC
 R.T.: 5.112 min
 Delta R.T.: 0.000 min
 Response: 494420589
 Conc: 10.25 ng/ml

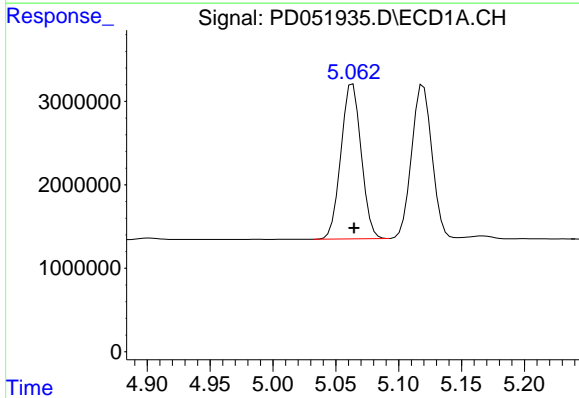


#8 Heptachlor epoxide
 R.T.: 4.847 min
 Delta R.T.: 0.000 min
 Response: 20315971
 Conc: 9.29 ng/ml

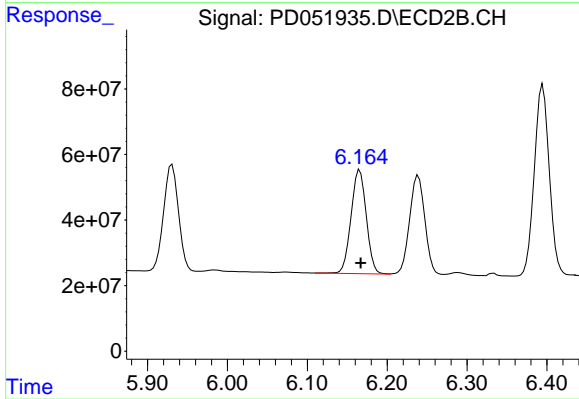
Instrument :
 ECD_D
 ClientSampled :



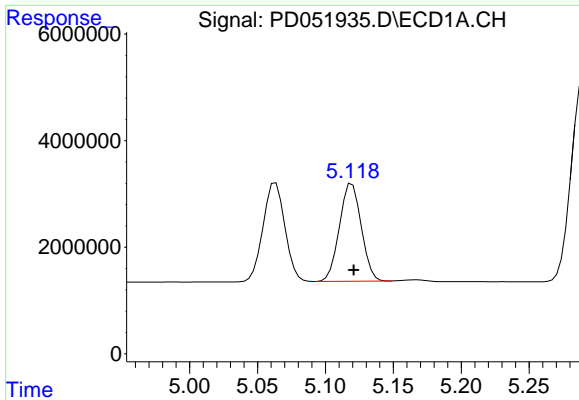
#8 Heptachlor epoxide
 R.T.: 5.931 min
 Delta R.T.: -0.001 min
 Response: 419891713
 Conc: 10.23 ng/ml



#10 trans-Chlordane
 R.T.: 5.063 min
 Delta R.T.: -0.001 min
 Response: 20834130
 Conc: 9.23 ng/ml

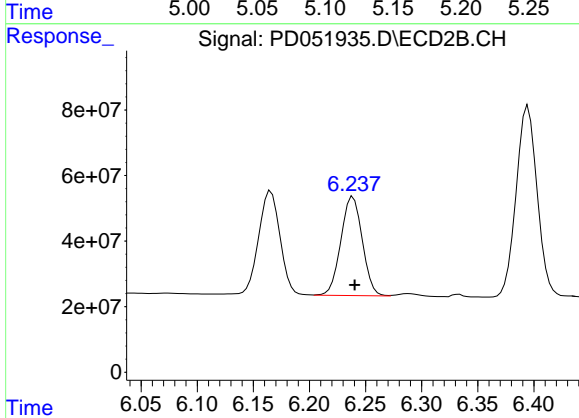


#10 trans-Chlordane
 R.T.: 6.166 min
 Delta R.T.: -0.001 min
 Response: 421063666
 Conc: 10.03 ng/ml

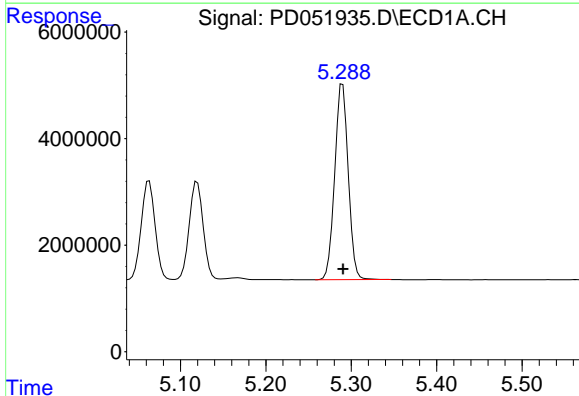


#11 cis-Chlordane
 R.T.: 5.120 min
 Delta R.T.: -0.001 min
 Response: 20538472
 Conc: 9.26 ng/ml

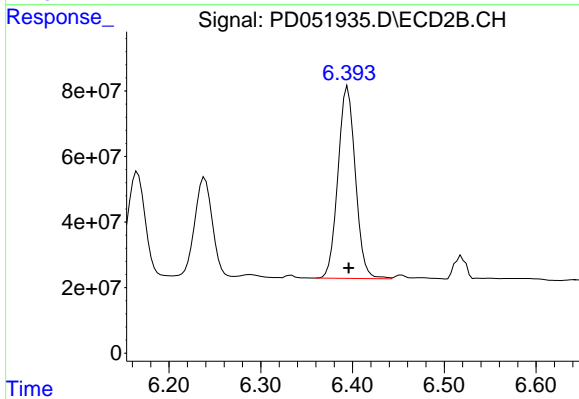
Instrument :
 ECD_D
 ClientSampled :



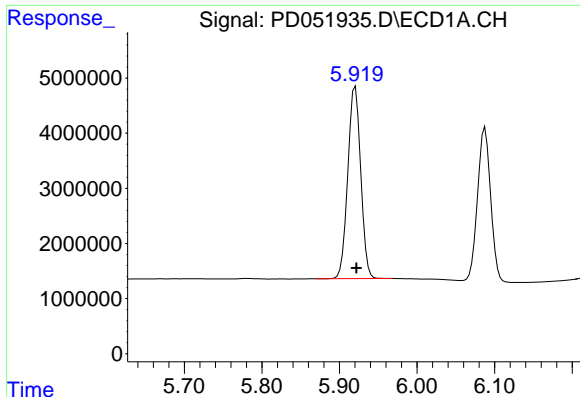
#11 cis-Chlordane
 R.T.: 6.239 min
 Delta R.T.: -0.002 min
 Response: 402106701
 Conc: 10.05 ng/ml



#12 4,4'-DDE
 R.T.: 5.290 min
 Delta R.T.: 0.000 min
 Response: 40395657
 Conc: 17.91 ng/ml



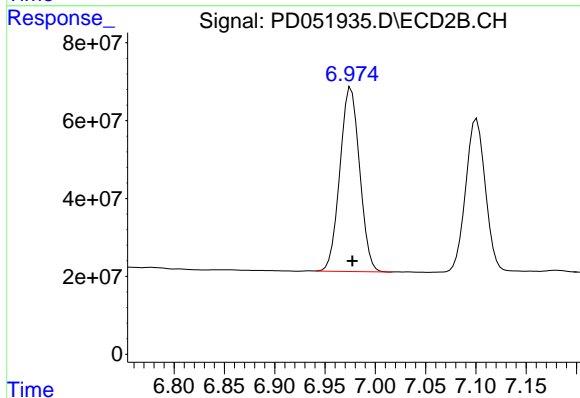
#12 4,4'-DDE
 R.T.: 6.395 min
 Delta R.T.: -0.001 min
 Response: 770033098
 Conc: 20.54 ng/ml



#15 Endosulfan II

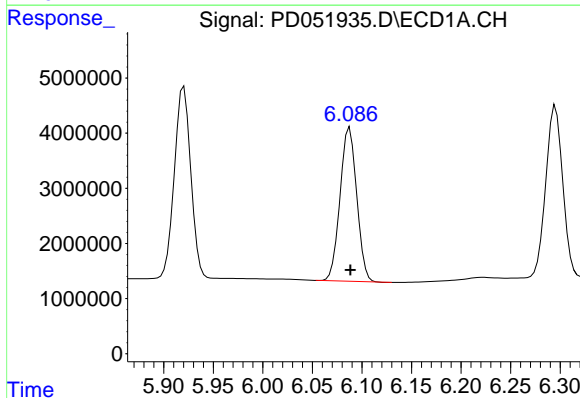
R.T.: 5.920 min
 Delta R.T.: -0.001 min
 Response: 40321117
 Conc: 18.72 ng/ml

Instrument :
 ECD_D
 ClientSampled :



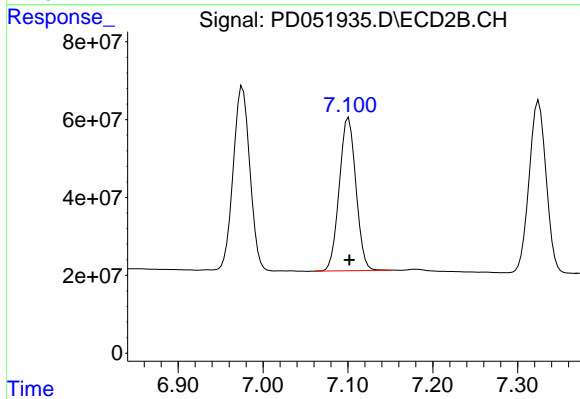
#15 Endosulfan II

R.T.: 6.976 min
 Delta R.T.: -0.001 min
 Response: 641661868
 Conc: 20.47 ng/ml



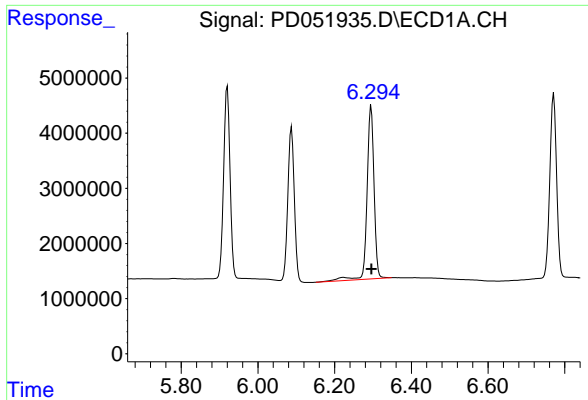
#18 Endrin aldehyde

R.T.: 6.088 min
 Delta R.T.: 0.000 min
 Response: 32628449
 Conc: 19.24 ng/ml



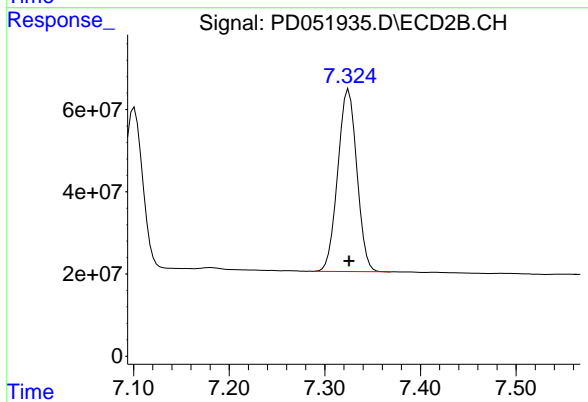
#18 Endrin aldehyde

R.T.: 7.101 min
 Delta R.T.: 0.000 min
 Response: 534869915
 Conc: 20.68 ng/ml

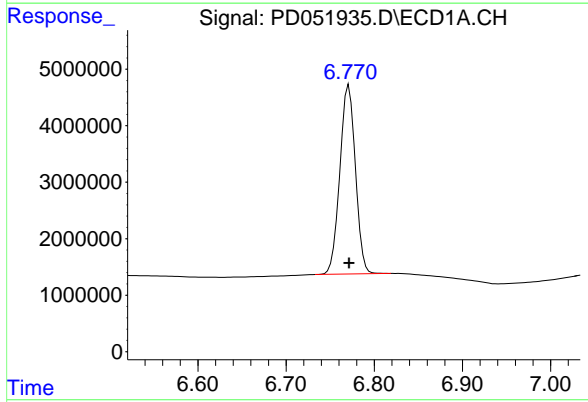


#19 Endosulfan Sulfate
R.T.: 6.295 min
Delta R.T.: 0.000 min
Response: 39907518
Conc: 20.85 ng/ml

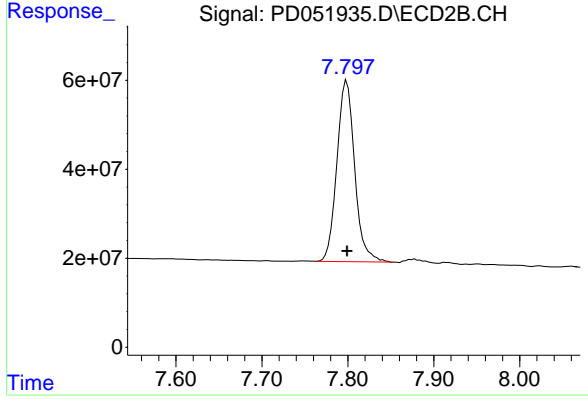
Instrument :
ECD_D
ClientSampleId :



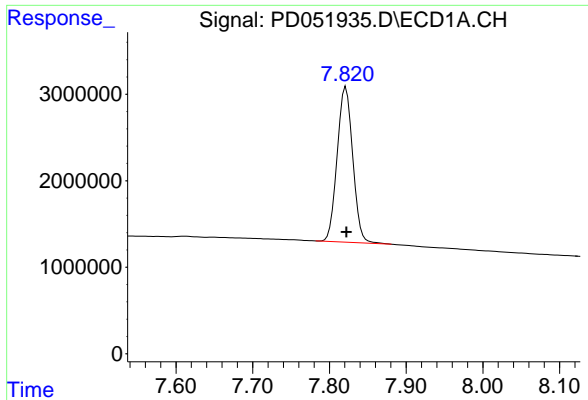
#19 Endosulfan Sulfate
R.T.: 7.325 min
Delta R.T.: 0.000 min
Response: 615472552
Conc: 21.18 ng/ml



#21 Endrin ketone
R.T.: 6.771 min
Delta R.T.: 0.000 min
Response: 41033415
Conc: 19.66 ng/ml



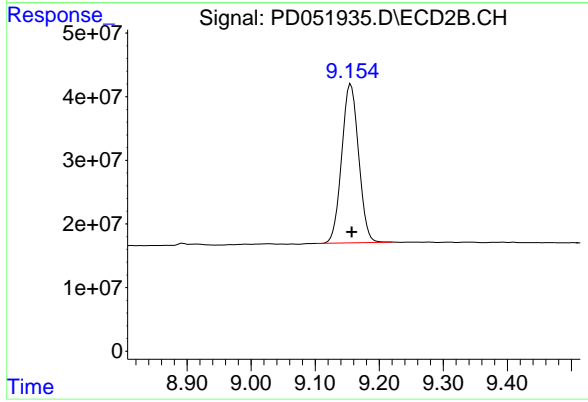
#21 Endrin ketone
R.T.: 7.799 min
Delta R.T.: 0.000 min
Response: 584590944
Conc: 21.76 ng/ml



#27 Decachlorobiphenyl

R.T.: 7.821 min
Delta R.T.: 0.000 min
Response: 25380713
Conc: 22.26 ng/ml

Instrument :
ECD_D
ClientSampleId :



#27 Decachlorobiphenyl

R.T.: 9.156 min
Delta R.T.: -0.002 min
Response: 457217809
Conc: 22.84 ng/ml