

Data Path : Z:\pestpcbsrv\HPCHEM1\ECD\_D\Data\PD032219\  
 Data File : PD051970.D  
 Signal(s) : Signal #1: ECD1A.CH Signal #2: ECD2B.CH  
 Acq On : 22 Mar 2019 19:47  
 Operator : AJ\SJ  
 Sample : I.BLK  
 Misc :  
 ALS Vial : 2 Sample Multiplier: 1

Instrument :  
 ECD\_D  
 ClientSampleId :  
 I.BLK

Integration File signal 1: autoint1.e  
 Integration File signal 2: autoint2.e  
 Quant Time: Mar 22 23:19:40 2019  
 Quant Method : Z:\pestpcbsrv\HPCHEM1\ECD\_D\Method\PD030219.M  
 Quant Title : GC Extractables  
 QLast Update : Fri Mar 01 23:43:17 2019  
 Response via : Initial Calibration  
 Integrator: ChemStation 6890 Scale Mode: Large solvent peaks clipped

Volume Inj. : 2 µl  
 Signal #1 Phase : ZB-MR2 Signal #2 Phase: ZB-MR1  
 Signal #1 Info : 30M x 0.32mm x0.2 Signal #2 Info : 30M x 0.32mm x 0.50µm

Compound	RT#1	RT#2	Resp#1	Resp#2	ng/ml	ng/ml
-----						
System Monitoring Compounds						
1) SA Tetrachlo...	3.222	4.044	28972187	679.3E6	21.851	23.689
28) SA Decachlor...	7.824	9.162	23920064	438.6E6	21.044	24.011
Target Compounds						
2) A alpha-BHC	0.000	4.426	0	870535	N.D.	0.020 #
3) MA gamma-BHC...	3.929f	0.000	2512135	0	1.202	N.D. #
4) MA Heptachlor	0.000	5.251	0	2134917	N.D.	0.056 #
7) B delta-BHC	0.000	5.088f	0	25500797	N.D.	0.742 #
8) B Heptachlo...	4.874f	5.927	637653	44059106	0.324	1.374 #
10) B gamma-Chl...	0.000	6.170	0	80706073	N.D.	2.524 #
14) MA Endrin	0.000	6.762	0	38318121	N.D.	1.467 #
15) B Endosulfa...	0.000	6.983	0	1246983	N.D.	0.048 #
23) Chlordane-1	0.000	5.031f	0	11632439	N.D.	7.597 #
25) Chlordane-3	0.000	6.170	0	80706073	N.D.	18.124 #
-----						

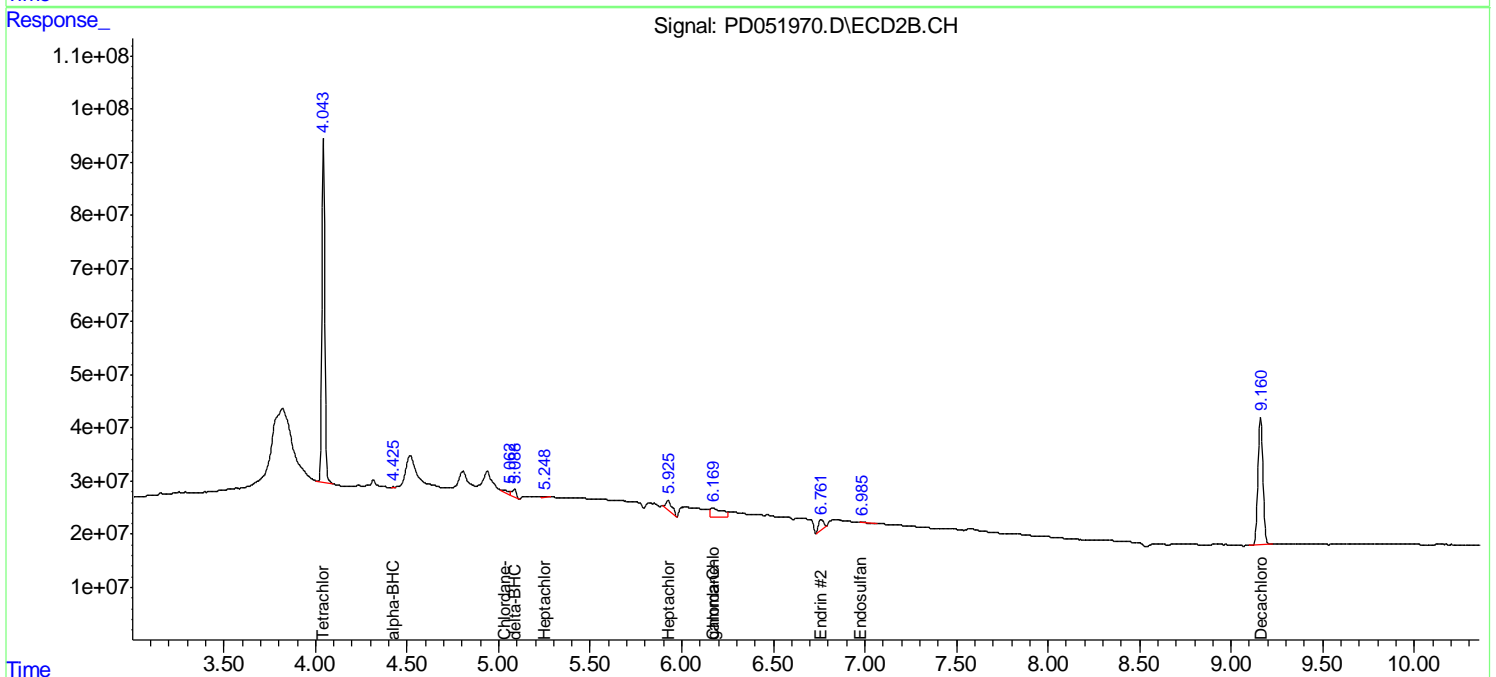
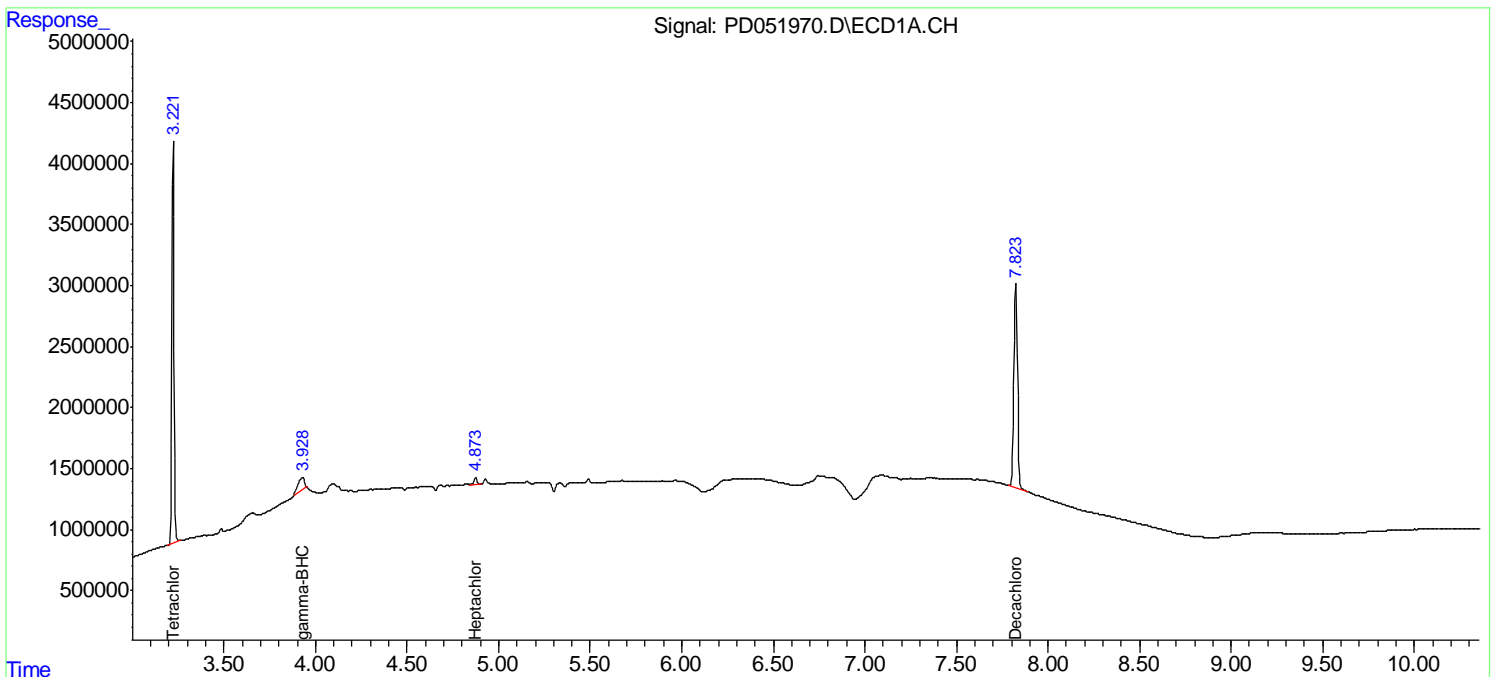
(f)=RT Delta > 1/2 Window (#)=Amounts differ by > 25% (m)=manual int.

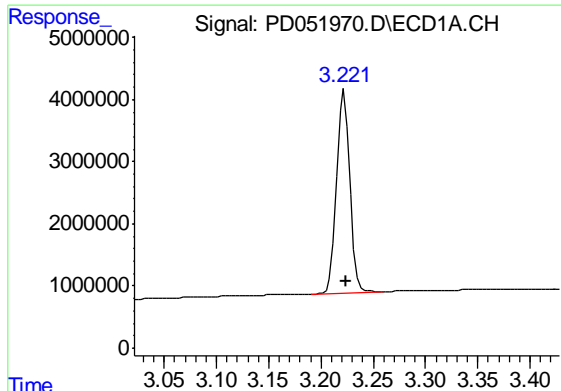
Data Path : Z:\pestpcbsrv\HPCHEM1\ECD\_D\Data\PD032219\  
 Data File : PD051970.D  
 Signal(s) : Signal #1: ECD1A.CH Signal #2: ECD2B.CH  
 Acq On : 22 Mar 2019 19:47  
 Operator : AJ\SJ  
 Sample : I.BLK  
 Misc :  
 ALS Vial : 2 Sample Multiplier: 1

Instrument :  
 ECD\_D  
 ClientSampleId :  
 I.BLK

Integration File signal 1: autoint1.e  
 Integration File signal 2: autoint2.e  
 Quant Time: Mar 22 23:19:40 2019  
 Quant Method : Z:\pestpcbsrv\HPCHEM1\ECD\_D\Method\PD030219.M  
 Quant Title : GC Extractables  
 QLast Update : Fri Mar 01 23:43:17 2019  
 Response via : Initial Calibration  
 Integrator: ChemStation 6890 Scale Mode: Large solvent peaks clipped

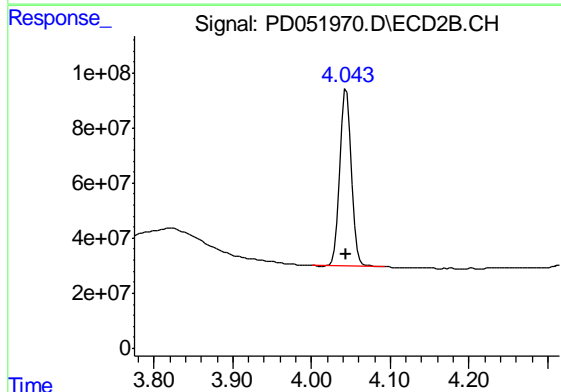
Volume Inj. : 2 µl  
 Signal #1 Phase : ZB-MR2 Signal #2 Phase: ZB-MR1  
 Signal #1 Info : 30M x 0.32mm x0.2 Signal #2 Info : 30M x 0.32mm x 0.50µm



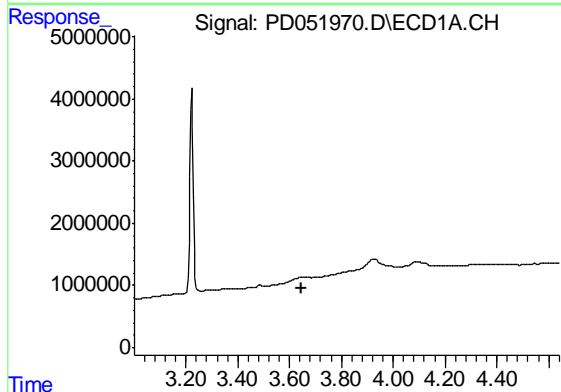


#1 Tetrachloro-m-xylene  
 R.T.: 3.222 min  
 Delta R.T.: -0.002 min  
 Response: 28972187  
 Conc: 21.85 ng/ml

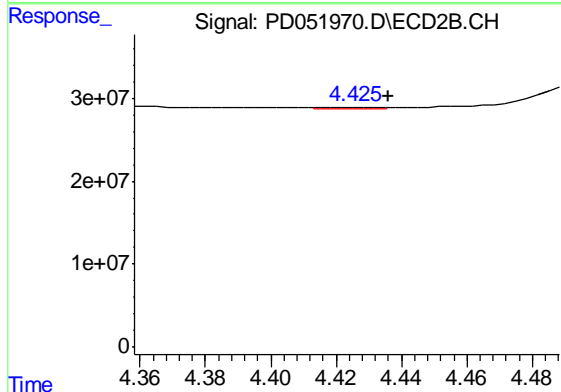
Instrument :  
 ECD\_D  
 ClientSampleId :  
 I.BLK



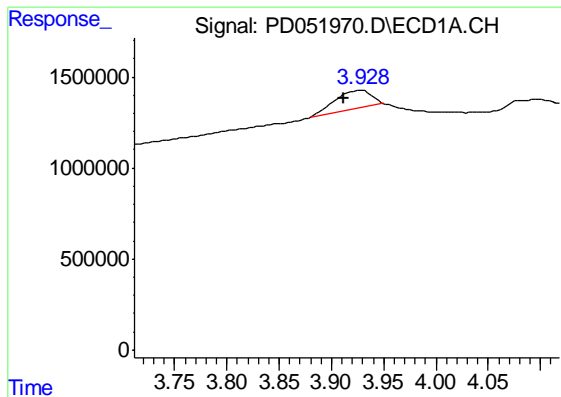
#1 Tetrachloro-m-xylene  
 R.T.: 4.044 min  
 Delta R.T.: 0.000 min  
 Response: 679324363  
 Conc: 23.69 ng/ml



#2 alpha-BHC  
 R.T.: 0.000 min  
 Exp R.T. : 3.644 min  
 Response: 0  
 Conc: N.D.



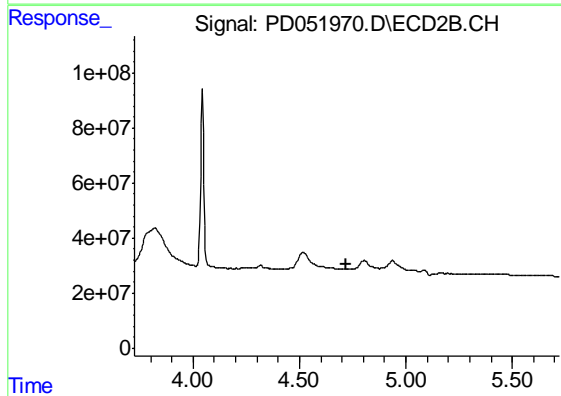
#2 alpha-BHC  
 R.T.: 4.426 min  
 Delta R.T.: -0.010 min  
 Response: 870535  
 Conc: 0.02 ng/ml



#3 gamma-BHC (Lindane)

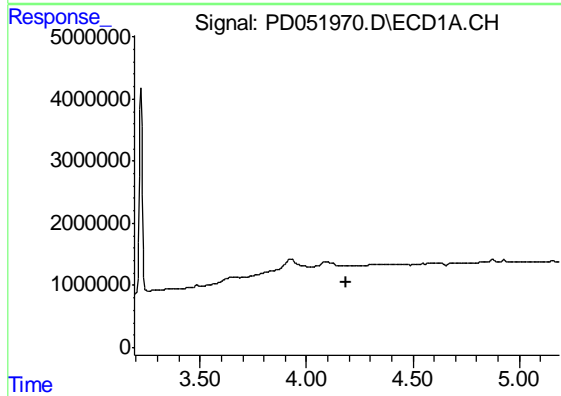
R.T.: 3.929 min  
Delta R.T.: 0.017 min  
Response: 2512135  
Conc: 1.20 ng/ml

Instrument :  
ECD\_D  
ClientSampleId :  
I.BLK



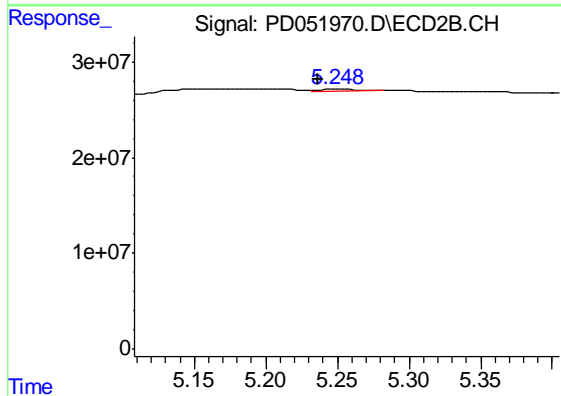
#3 gamma-BHC (Lindane)

R.T.: 0.000 min  
Exp R.T. : 4.723 min  
Response: 0  
Conc: N.D.



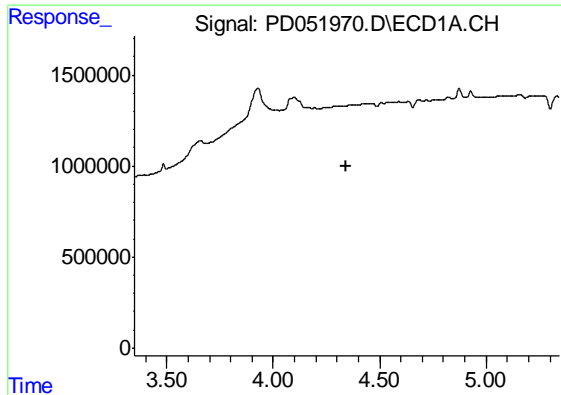
#4 Heptachlor

R.T.: 0.000 min  
Exp R.T. : 4.190 min  
Response: 0  
Conc: N.D.



#4 Heptachlor

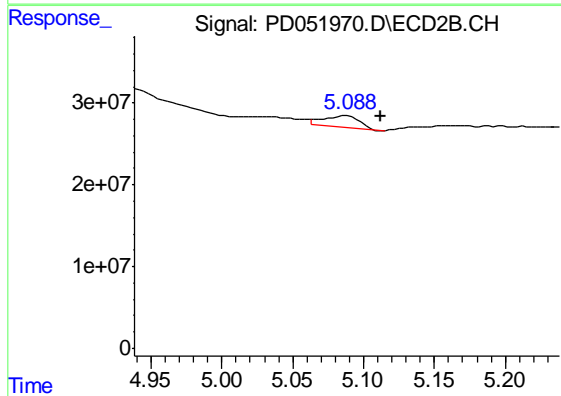
R.T.: 5.251 min  
Delta R.T.: 0.015 min  
Response: 2134917  
Conc: 0.06 ng/ml



#7 delta-BHC

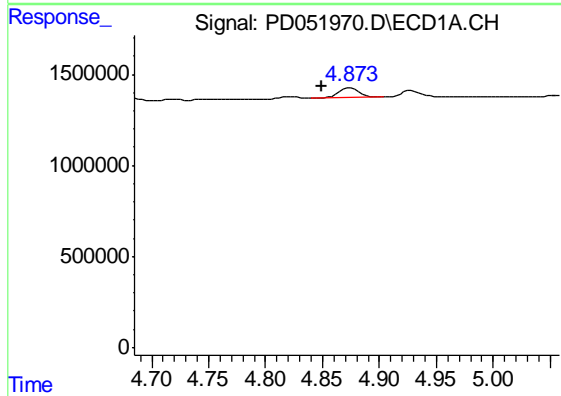
R.T.: 0.000 min  
 Exp R.T.: 4.346 min  
 Response: 0  
 Conc: N.D.

Instrument :  
 ECD\_D  
 ClientSampled :  
 I.BLK



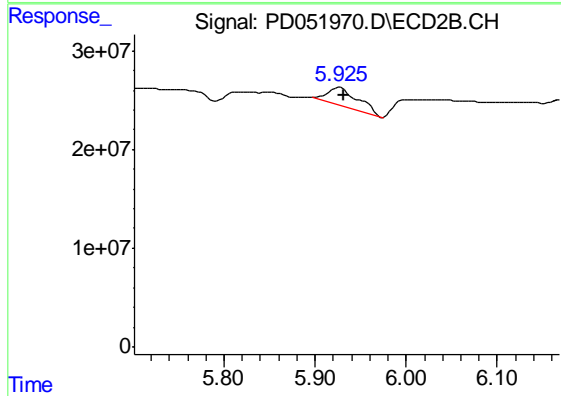
#7 delta-BHC

R.T.: 5.088 min  
 Delta R.T.: -0.024 min  
 Response: 25500797  
 Conc: 0.74 ng/ml



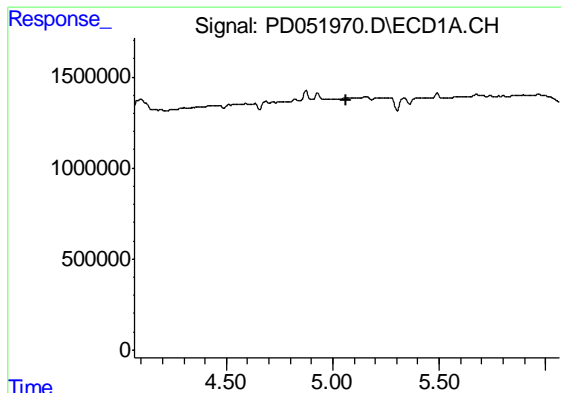
#8 Heptachlor epoxide

R.T.: 4.874 min  
 Delta R.T.: 0.025 min  
 Response: 637653  
 Conc: 0.32 ng/ml



#8 Heptachlor epoxide

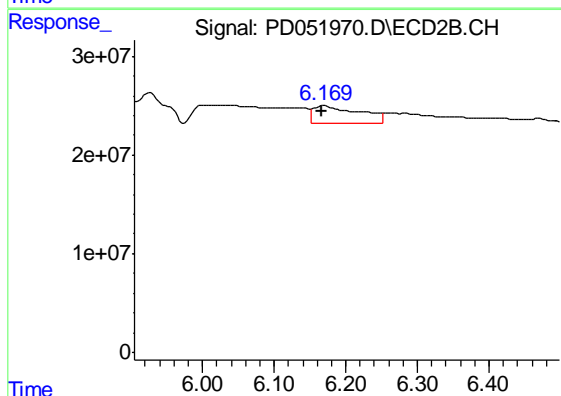
R.T.: 5.927 min  
 Delta R.T.: -0.004 min  
 Response: 44059106  
 Conc: 1.37 ng/ml



#10 gamma-Chlordane

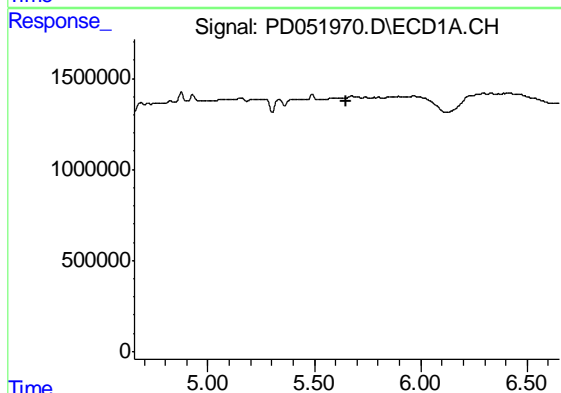
R.T.: 0.000 min  
 Exp R.T. : 5.066 min  
 Response: 0  
 Conc: N.D.

Instrument :  
 ECD\_D  
 ClientSampleId :  
 I.BLK



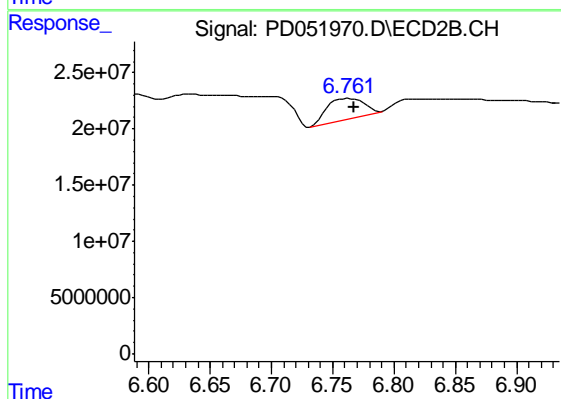
#10 gamma-Chlordane

R.T.: 6.170 min  
 Delta R.T.: 0.004 min  
 Response: 80706073  
 Conc: 2.52 ng/ml



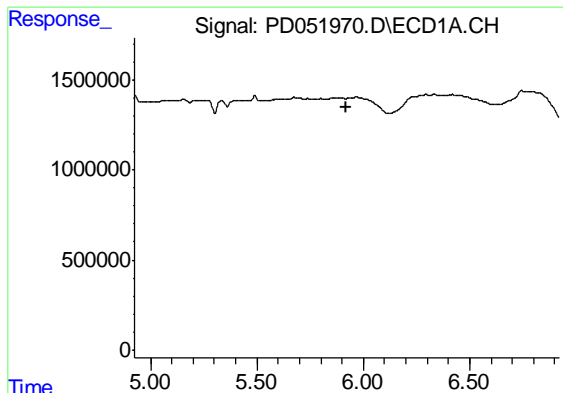
#14 Endrin

R.T.: 0.000 min  
 Exp R.T. : 5.653 min  
 Response: 0  
 Conc: N.D.



#14 Endrin

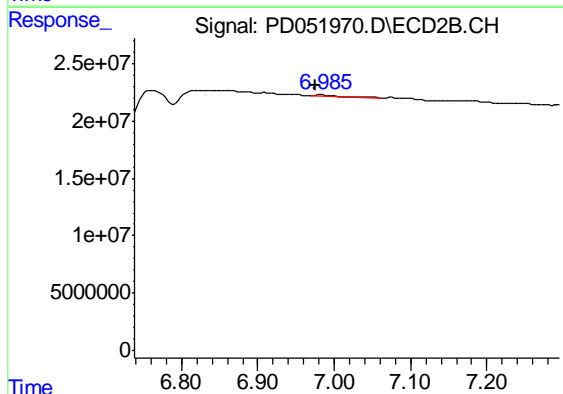
R.T.: 6.762 min  
 Delta R.T.: -0.005 min  
 Response: 38318121  
 Conc: 1.47 ng/ml



#15 Endosulfan II

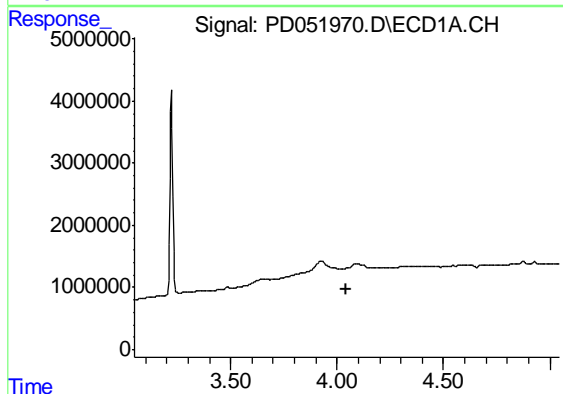
R.T.: 0.000 min  
 Exp R.T. : 5.923 min  
 Response: 0  
 Conc: N.D.

Instrument :  
 ECD\_D  
 ClientSampleId :  
 I.BLK



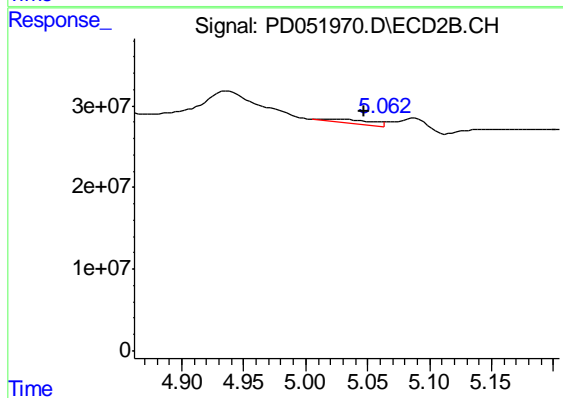
#15 Endosulfan II

R.T.: 6.983 min  
 Delta R.T.: 0.008 min  
 Response: 1246983  
 Conc: 0.05 ng/ml



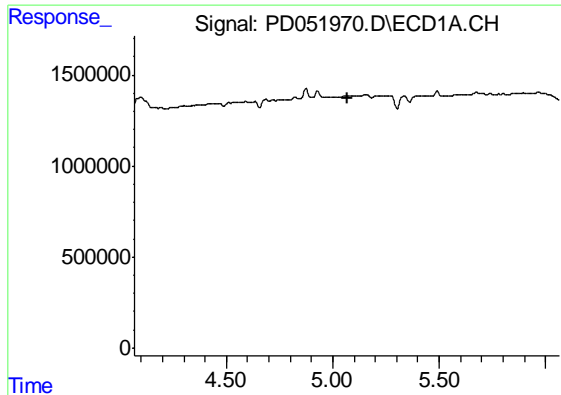
#23 Chlordane-1

R.T.: 0.000 min  
 Exp R.T. : 4.046 min  
 Response: 0  
 Conc: N.D.



#23 Chlordane-1

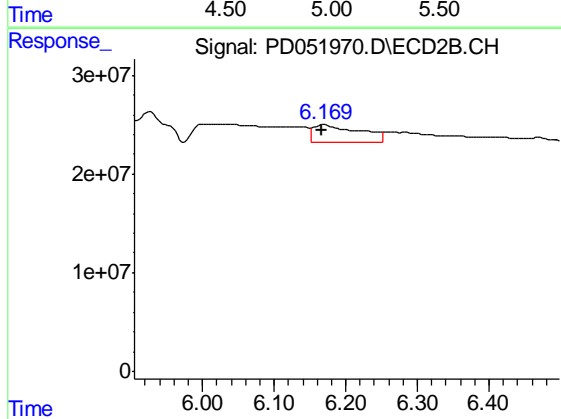
R.T.: 5.031 min  
 Delta R.T.: -0.016 min  
 Response: 11632439  
 Conc: 7.60 ng/ml



#25 Chlordane-3

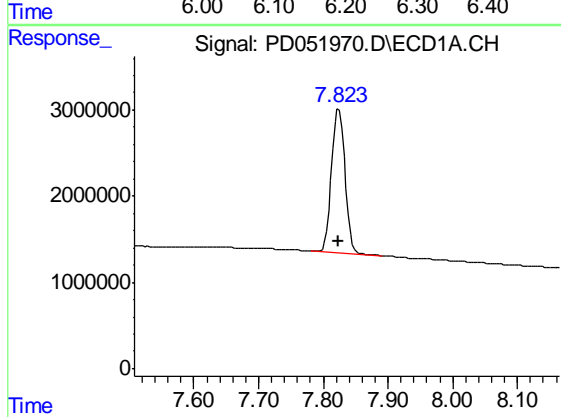
R.T.: 0.000 min  
 Exp R.T. : 5.067 min  
 Response: 0  
 Conc: N.D.

Instrument :  
 ECD\_D  
 ClientSampleId :  
 I.BLK



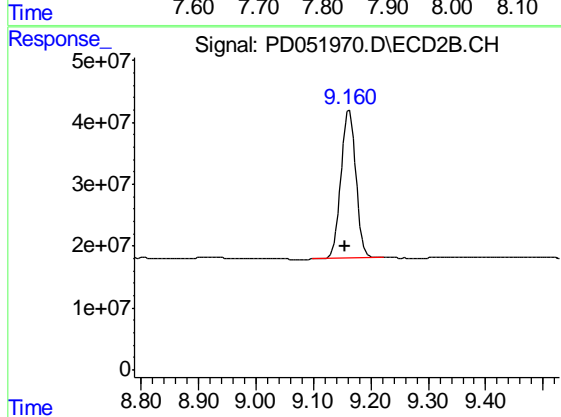
#25 Chlordane-3

R.T.: 6.170 min  
 Delta R.T.: 0.004 min  
 Response: 80706073  
 Conc: 18.12 ng/ml



#28 Decachlorobiphenyl

R.T.: 7.824 min  
 Delta R.T.: 0.000 min  
 Response: 23920064  
 Conc: 21.04 ng/ml



#28 Decachlorobiphenyl

R.T.: 9.162 min  
 Delta R.T.: 0.007 min  
 Response: 438607292  
 Conc: 24.01 ng/ml