

Data Path : Z:\pestpcbsrv\HPCHEM1\ECD\_D\Data\PD032219\  
 Data File : PD051998.D  
 Signal(s) : Signal #1: ECD1A.CH Signal #2: ECD2B.CH  
 Acq On : 23 Mar 2019 3:06  
 Operator : AJ\SJ  
 Sample : K2013-17  
 Misc :  
 ALS Vial : 48 Sample Multiplier: 1

Instrument :  
 ECD\_D  
 ClientSampleId :  
 PST-026-SW071-031819

Integration File signal 1: autoint1.e  
 Integration File signal 2: autoint2.e  
 Quant Time: Mar 23 03:36:04 2019  
 Quant Method : Z:\pestpcbsrv\HPCHEM1\ECD\_D\Method\PD030219.M  
 Quant Title : GC Extractables  
 QLast Update : Fri Mar 01 23:43:17 2019  
 Response via : Initial Calibration  
 Integrator: ChemStation 6890 Scale Mode: Large solvent peaks clipped

Volume Inj. : 2 µl  
 Signal #1 Phase : ZB-MR2 Signal #2 Phase: ZB-MR1  
 Signal #1 Info : 30M x 0.32mm x 0.2 Signal #2 Info : 30M x 0.32mm x 0.50µm

Compound	RT#1	RT#2	Resp#1	Resp#2	ng/ml	ng/ml
-----						
System Monitoring Compounds						
1) SA Tetrachlo...	3.222	4.045	24376783	563.4E6	18.385	19.646
28) SA Decachlor...	7.824	9.161	14548255	265.7E6	12.799	14.548
Target Compounds						
2) A alpha-BHC	3.668f	4.408f	1029329	24305026	0.469	0.557
3) MA gamma-BHC...	3.920	4.747f	2624150	7539120	1.256	0.190 #
4) MA Heptachlor	0.000	5.243	0	14084720	N.D.	0.367 #
5) MB Aldrin	4.400f	5.551	1639426	358331	0.805	0.010 #
6) B beta-BHC	0.000	4.876f	0	29855227	N.D.	1.661 #
7) B delta-BHC	0.000	5.087f	0	86459764	N.D.	2.516 #
8) B Heptachlo...	4.848	5.924	820676	-322403	0.417	N.D. #
10) B gamma-Chl...	5.086f	6.168	9377209	100.7E6	4.628	3.149 #
11) B alpha-Chl...	5.120	6.244	4011144	248.8E6	1.996	7.849 #
12) B 4,4'-DDE	5.291	6.398	35797542	655.5E6	19.109	21.195
13) MA Dieldrin	0.000	6.571f	0	3390012	N.D.	0.110 #
14) MA Endrin	5.665	6.796f	1837353	26547531	0.959	1.017
15) B Endosulfa...	5.932	6.981	965564	58564569	0.536	2.274 #
16) A 4,4'-DDD	0.000	6.863f	0	103.4E6	N.D.	4.208 #
17) MA 4,4'-DDT	6.024	7.190	7590845	143.8E6	4.751	7.100 #
19) B Endosulfa...	0.000	7.326	0	18699709	N.D.	0.798 #
21) B Endrin ke...	0.000	7.790	0	17833561	N.D.	0.789 #
22) Mirex	0.000	8.232f	0	4172559	N.D.	0.270 #
24) Chlordane-2	0.000	5.516	0	3989528	N.D.	2.814 #
25) Chlordane-3	5.086f	6.168	9377209	100.7E6	40.291	22.617 #
26) Chlordane-4	5.120	6.244	4011144	248.8E6	17.938	47.500 #
27) Chlordane-5	5.932	7.051	965564	9714358	13.443	9.590 #

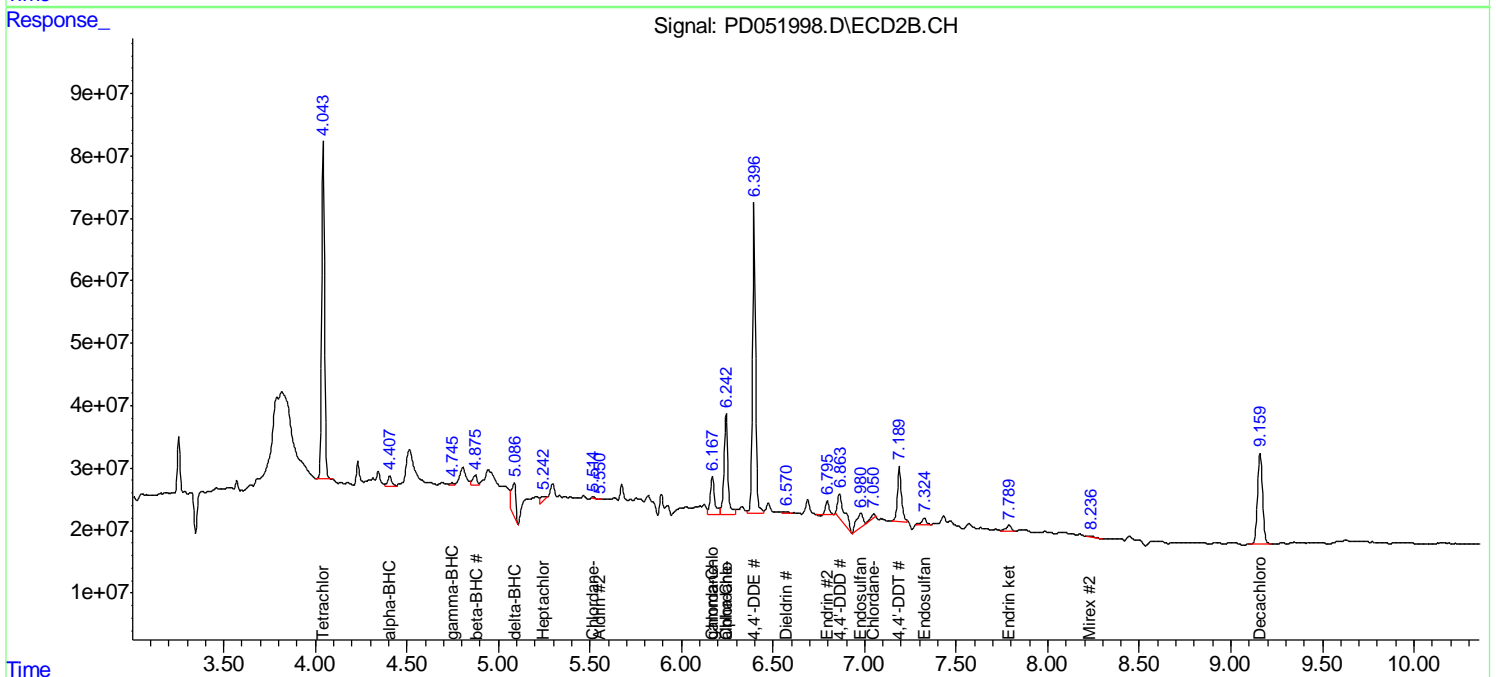
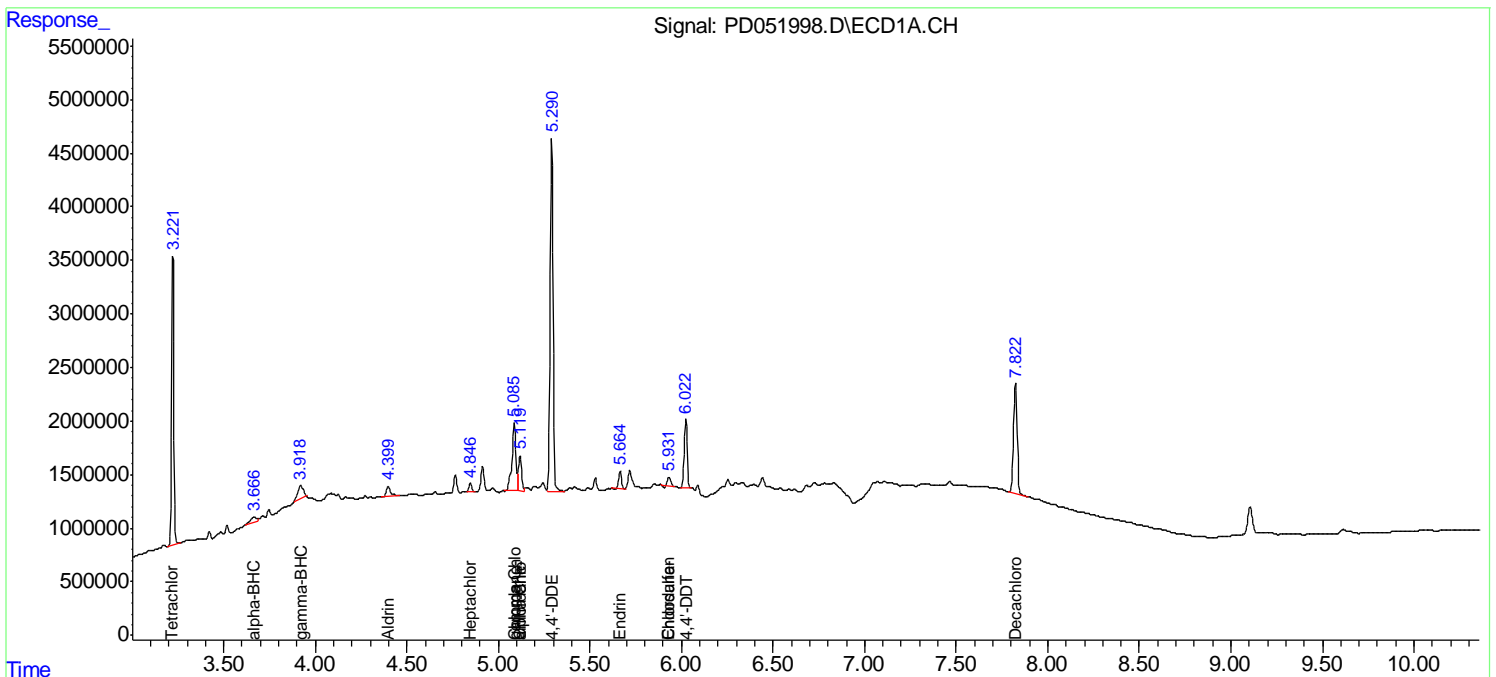
(f)=RT Delta > 1/2 Window (#)=Amounts differ by > 25% (m)=manual int.

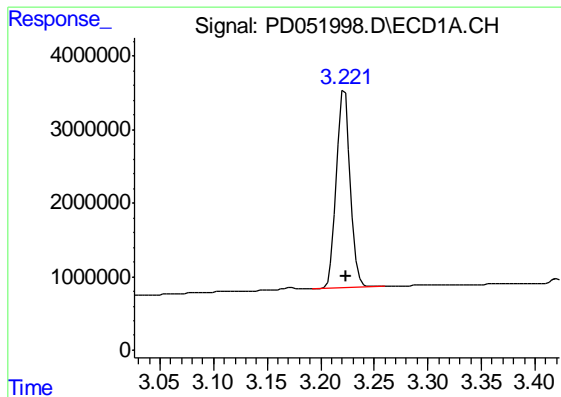
Data Path : Z:\pestpcbsrv\HPCHEM1\ECD\_D\Data\PD032219\  
 Data File : PD051998.D  
 Signal(s) : Signal #1: ECD1A.CH Signal #2: ECD2B.CH  
 Acq On : 23 Mar 2019 3:06  
 Operator : AJ\SJ  
 Sample : K2013-17  
 Misc :  
 ALS Vial : 48 Sample Multiplier: 1

Instrument :  
 ECD\_D  
 Client Sample ID :  
 PST-026-SW071-031819

Integration File signal 1: autoint1.e  
 Integration File signal 2: autoint2.e  
 Quant Time: Mar 23 03:36:04 2019  
 Quant Method : Z:\pestpcbsrv\HPCHEM1\ECD\_D\Method\PD030219.M  
 Quant Title : GC Extractables  
 QLast Update : Fri Mar 01 23:43:17 2019  
 Response via : Initial Calibration  
 Integrator: ChemStation 6890 Scale Mode: Large solvent peaks clipped

Volume Inj. : 2 µl  
 Signal #1 Phase : ZB-MR2 Signal #2 Phase: ZB-MR1  
 Signal #1 Info : 30M x 0.32mm x0.2 Signal #2 Info : 30M x 0.32mm x 0.50µm

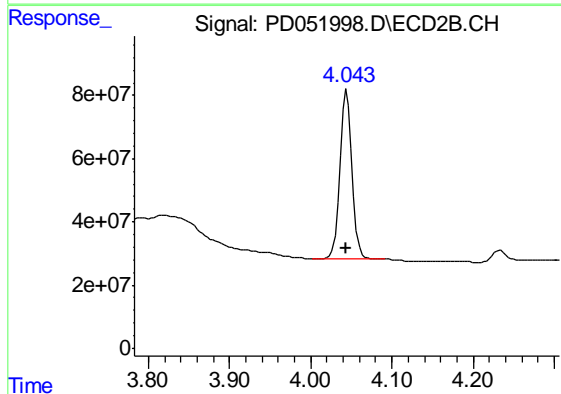




#1 Tetrachloro-m-xylene

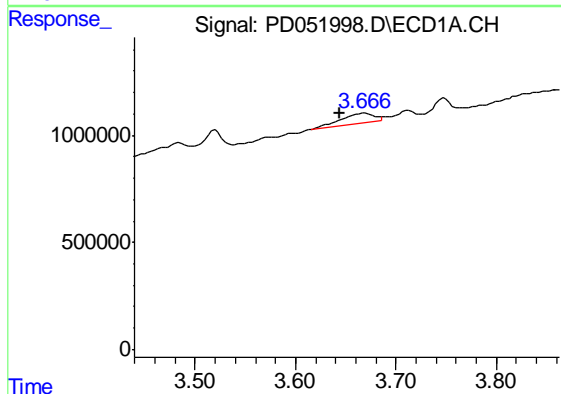
R.T.: 3.222 min  
 Delta R.T.: -0.002 min  
 Response: 24376783  
 Conc: 18.38 ng/ml

Instrument :  
 ECD\_D  
 ClientSampleId :  
 PST-026-SW071-031819



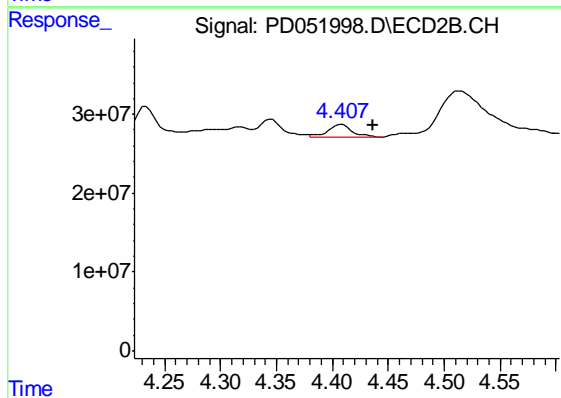
#1 Tetrachloro-m-xylene

R.T.: 4.045 min  
 Delta R.T.: 0.000 min  
 Response: 563384178  
 Conc: 19.65 ng/ml



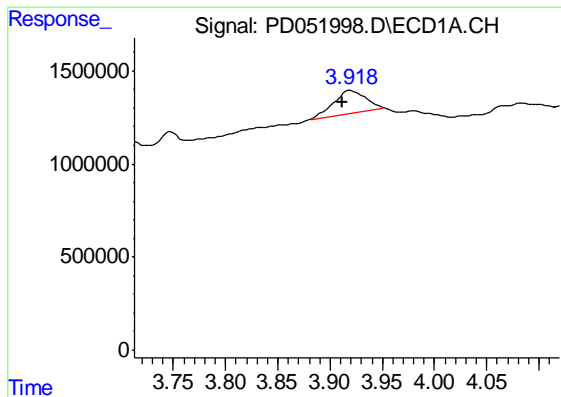
#2 alpha-BHC

R.T.: 3.668 min  
 Delta R.T.: 0.025 min  
 Response: 1029329  
 Conc: 0.47 ng/ml



#2 alpha-BHC

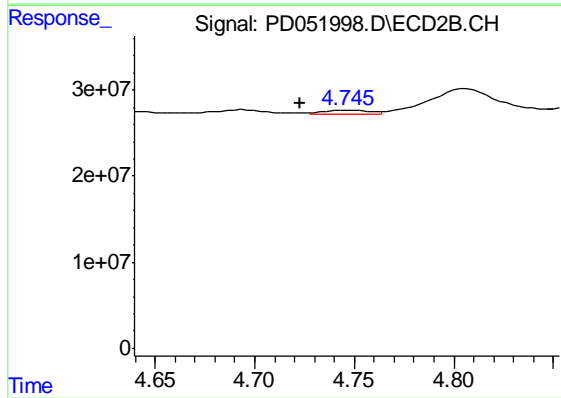
R.T.: 4.408 min  
 Delta R.T.: -0.028 min  
 Response: 24305026  
 Conc: 0.56 ng/ml



#3 gamma-BHC (Lindane)

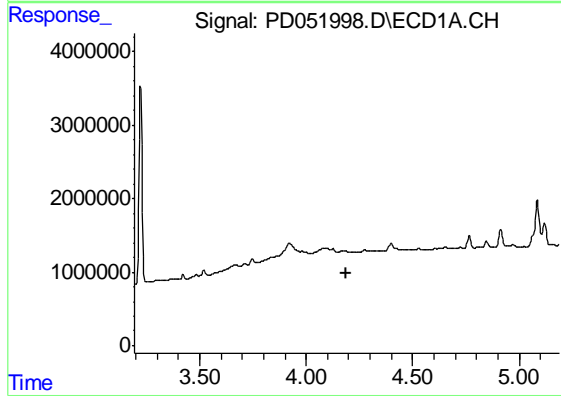
R.T.: 3.920 min  
Delta R.T.: 0.008 min  
Response: 2624150  
Conc: 1.26 ng/ml

Instrument :  
ECD\_D  
ClientSampleId :  
PST-026-SW071-031819



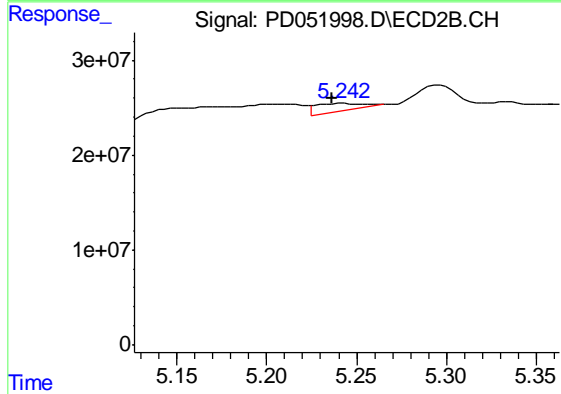
#3 gamma-BHC (Lindane)

R.T.: 4.747 min  
Delta R.T.: 0.024 min  
Response: 7539120  
Conc: 0.19 ng/ml



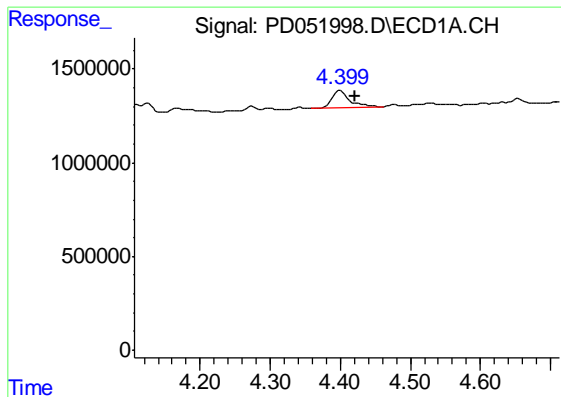
#4 Heptachlor

R.T.: 0.000 min  
Exp R.T. : 4.190 min  
Response: 0  
Conc: N.D.



#4 Heptachlor

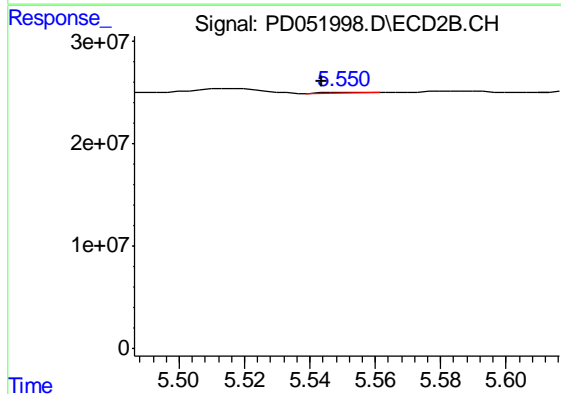
R.T.: 5.243 min  
Delta R.T.: 0.007 min  
Response: 14084720  
Conc: 0.37 ng/ml



#5 Aldrin

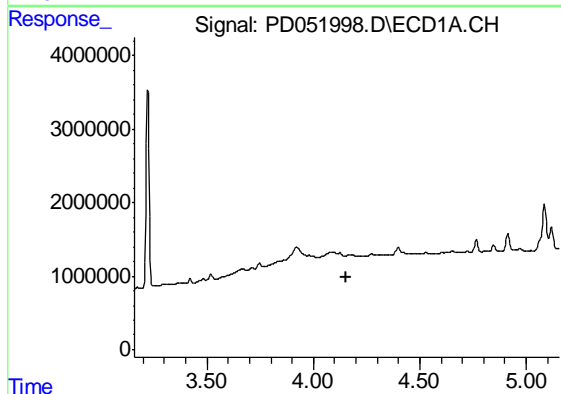
R.T.: 4.400 min  
 Delta R.T.: -0.021 min  
 Response: 1639426  
 Conc: 0.81 ng/ml

Instrument :  
 ECD\_D  
 ClientSampleId :  
 PST-026-SW071-031819



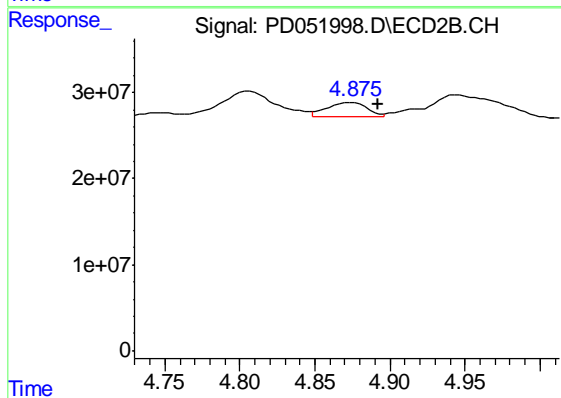
#5 Aldrin

R.T.: 5.551 min  
 Delta R.T.: 0.008 min  
 Response: 358331  
 Conc: 0.01 ng/ml



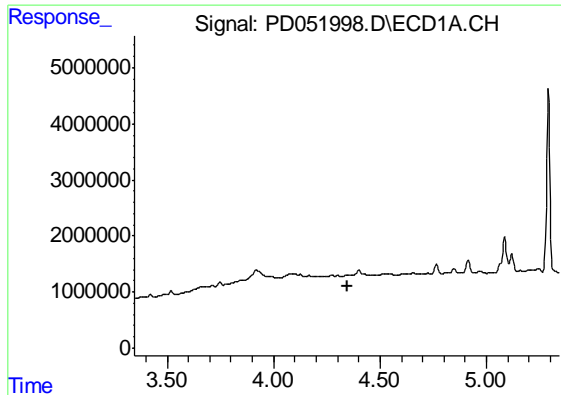
#6 beta-BHC

R.T.: 0.000 min  
 Exp R.T. : 4.158 min  
 Response: 0  
 Conc: N.D.



#6 beta-BHC

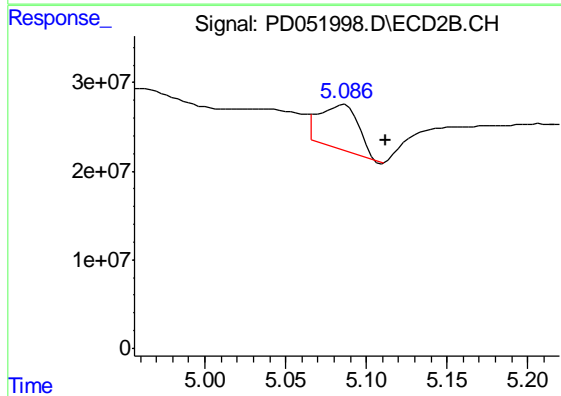
R.T.: 4.876 min  
 Delta R.T.: -0.016 min  
 Response: 29855227  
 Conc: 1.66 ng/ml



#7 delta-BHC

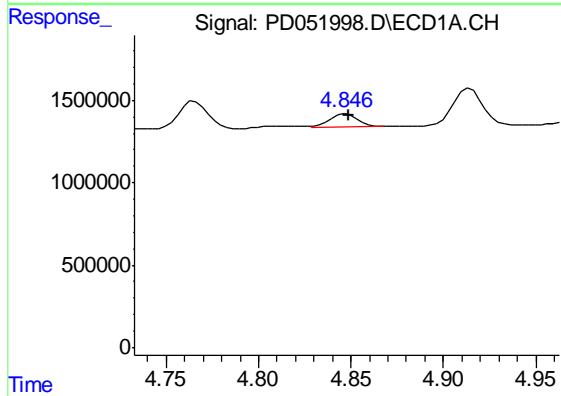
R.T.: 0.000 min  
 Exp R.T. : 4.346 min  
 Response: 0  
 Conc: N.D.

Instrument :  
 ECD\_D  
 ClientSampleId :  
 PST-026-SW071-031819



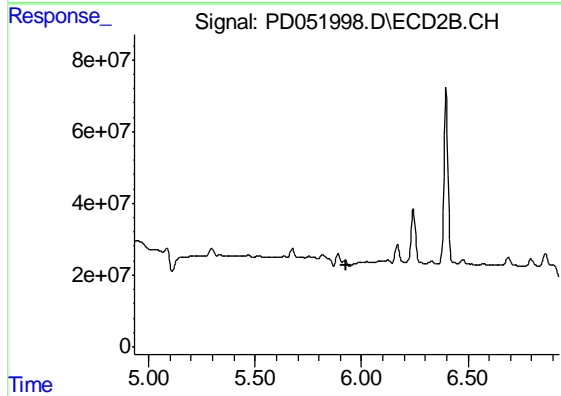
#7 delta-BHC

R.T.: 5.087 min  
 Delta R.T.: -0.025 min  
 Response: 86459764  
 Conc: 2.52 ng/ml



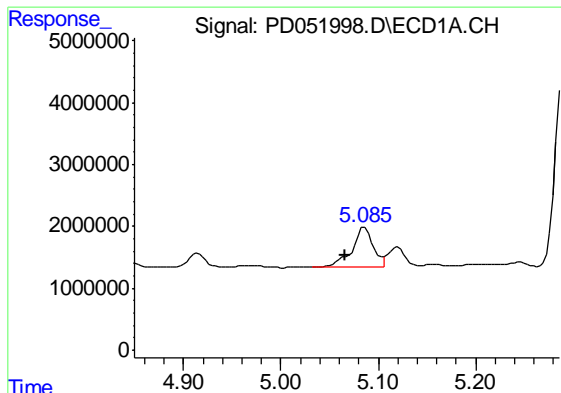
#8 Heptachlor epoxide

R.T.: 4.848 min  
 Delta R.T.: -0.001 min  
 Response: 820676  
 Conc: 0.42 ng/ml



#8 Heptachlor epoxide

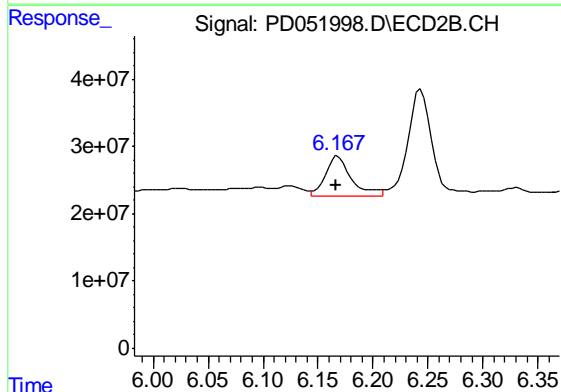
R.T.: 5.924 min  
 Delta R.T.: -0.007 min  
 Response: -322403  
 Conc: N.D.



#10 gamma-Chlordane

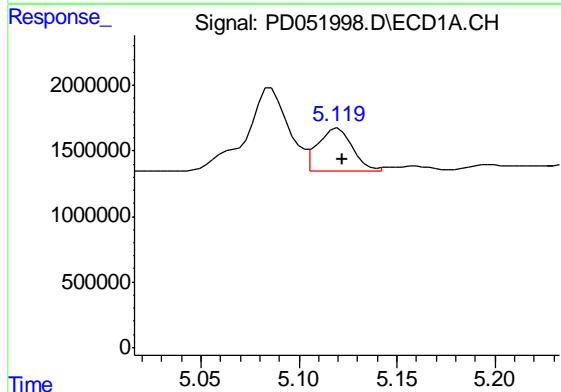
R.T.: 5.086 min  
 Delta R.T.: 0.020 min  
 Response: 9377209  
 Conc: 4.63 ng/ml

Instrument :  
 ECD\_D  
 ClientSampleId :  
 PST-026-SW071-031819



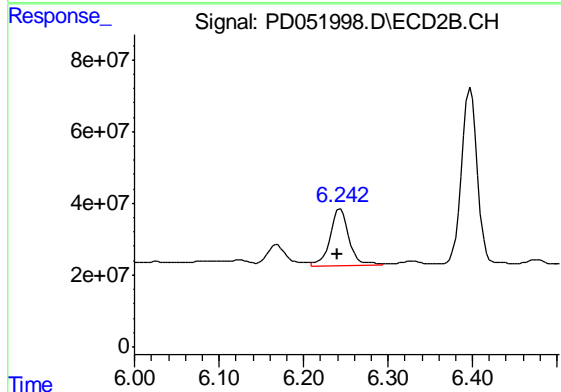
#10 gamma-Chlordane

R.T.: 6.168 min  
 Delta R.T.: 0.002 min  
 Response: 100716825  
 Conc: 3.15 ng/ml



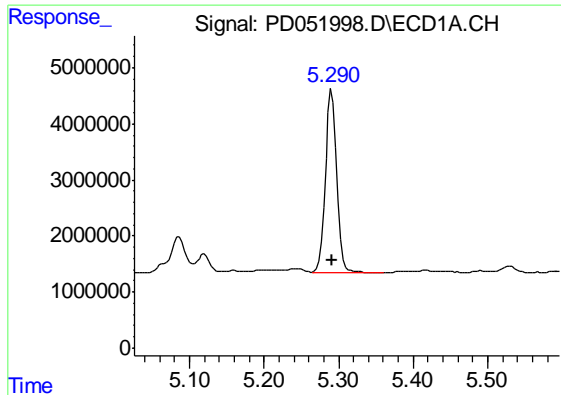
#11 alpha-Chlordane

R.T.: 5.120 min  
 Delta R.T.: -0.002 min  
 Response: 4011144  
 Conc: 2.00 ng/ml



#11 alpha-Chlordane

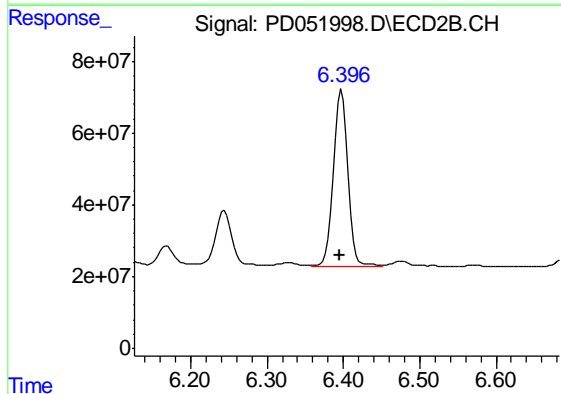
R.T.: 6.244 min  
 Delta R.T.: 0.004 min  
 Response: 248760054  
 Conc: 7.85 ng/ml



#12 4,4'-DDE

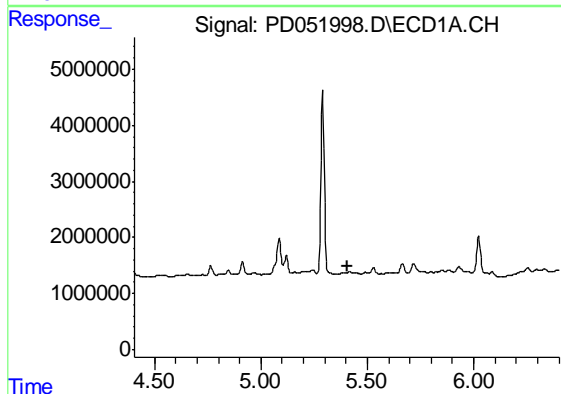
R.T.: 5.291 min  
 Delta R.T.: 0.000 min  
 Response: 35797542  
 Conc: 19.11 ng/ml

Instrument :  
 ECD\_D  
 ClientSampleId :  
 PST-026-SW071-031819



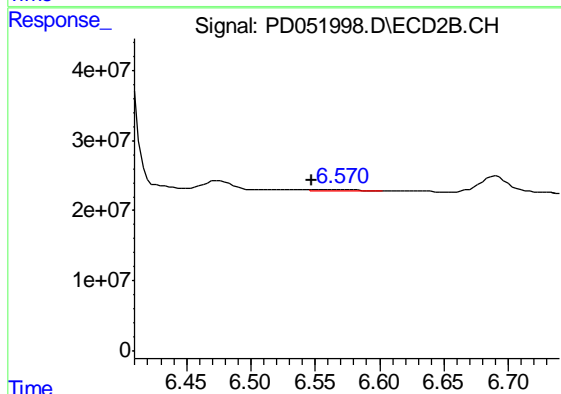
#12 4,4'-DDE

R.T.: 6.398 min  
 Delta R.T.: 0.003 min  
 Response: 655542948  
 Conc: 21.19 ng/ml



#13 Dieldrin

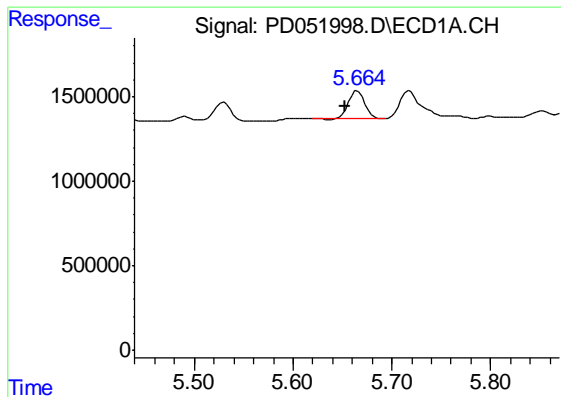
R.T.: 0.000 min  
 Exp R.T. : 5.406 min  
 Response: 0  
 Conc: N.D.



#13 Dieldrin

R.T.: 6.571 min  
 Delta R.T.: 0.024 min  
 Response: 3390012  
 Conc: 0.11 ng/ml

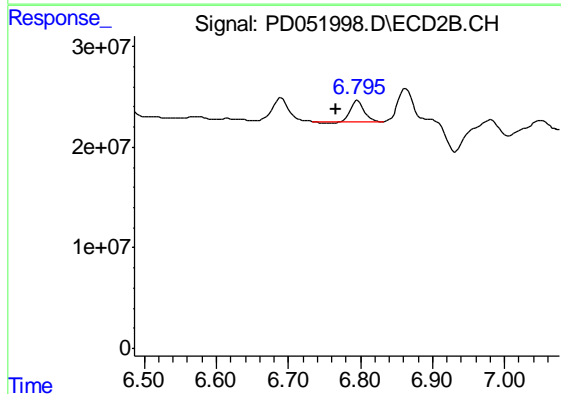




#14 Endrin

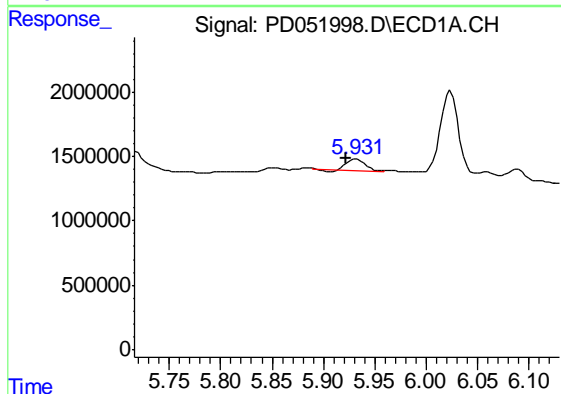
R.T.: 5.665 min  
 Delta R.T.: 0.012 min  
 Response: 1837353  
 Conc: 0.96 ng/ml

Instrument :  
 ECD\_D  
 ClientSampleId :  
 PST-026-SW071-031819



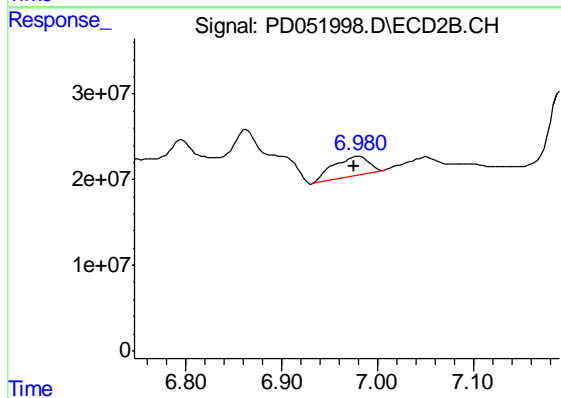
#14 Endrin

R.T.: 6.796 min  
 Delta R.T.: 0.029 min  
 Response: 26547531  
 Conc: 1.02 ng/ml



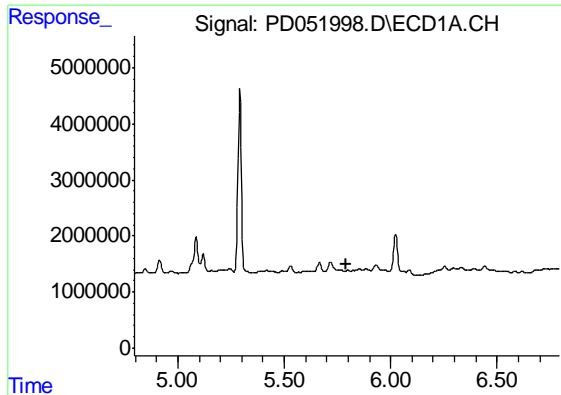
#15 Endosulfan II

R.T.: 5.932 min  
 Delta R.T.: 0.010 min  
 Response: 965564  
 Conc: 0.54 ng/ml



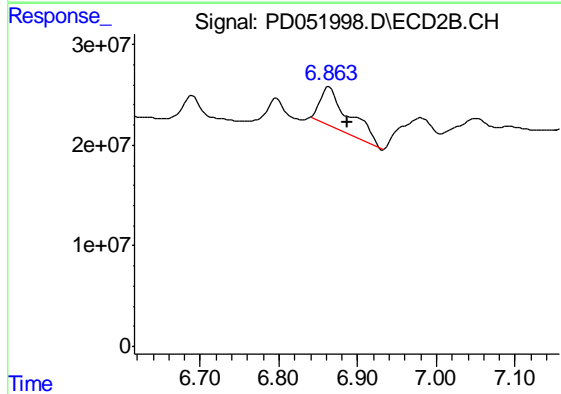
#15 Endosulfan II

R.T.: 6.981 min  
 Delta R.T.: 0.006 min  
 Response: 58564569  
 Conc: 2.27 ng/ml

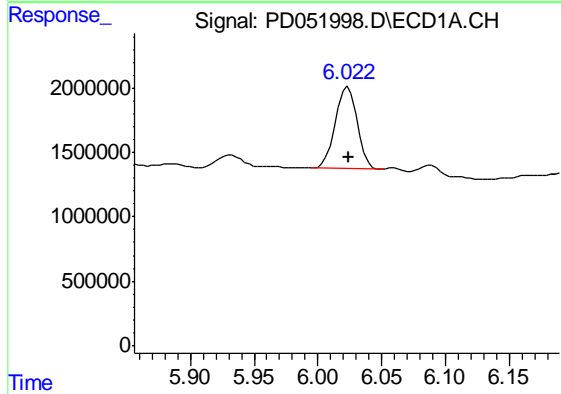


#16 4,4'-DDD  
 R.T.: 0.000 min  
 Exp R.T. : 5.793 min  
 Response: 0  
 Conc: N.D.

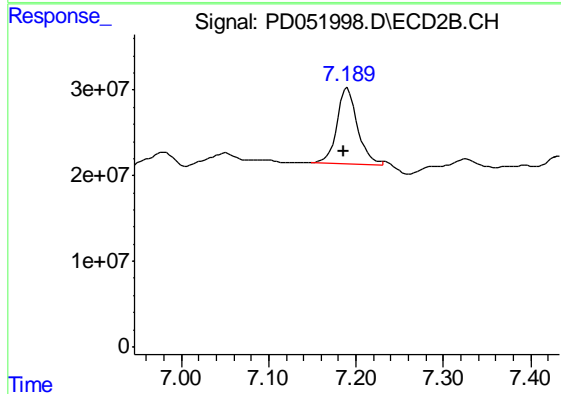
Instrument :  
 ECD\_D  
 ClientSampleId :  
 PST-026-SW071-031819



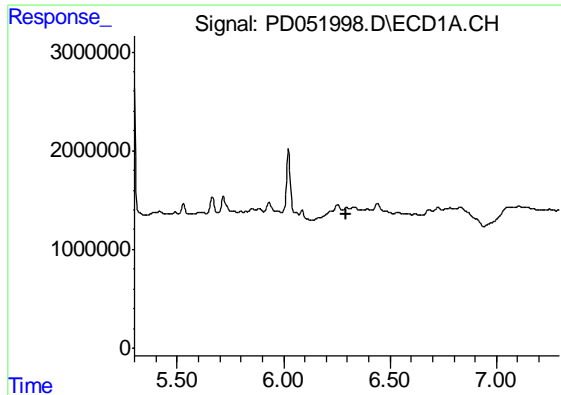
#16 4,4'-DDD  
 R.T.: 6.863 min  
 Delta R.T.: -0.023 min  
 Response: 103353650  
 Conc: 4.21 ng/ml



#17 4,4'-DDT  
 R.T.: 6.024 min  
 Delta R.T.: 0.000 min  
 Response: 7590845  
 Conc: 4.75 ng/ml



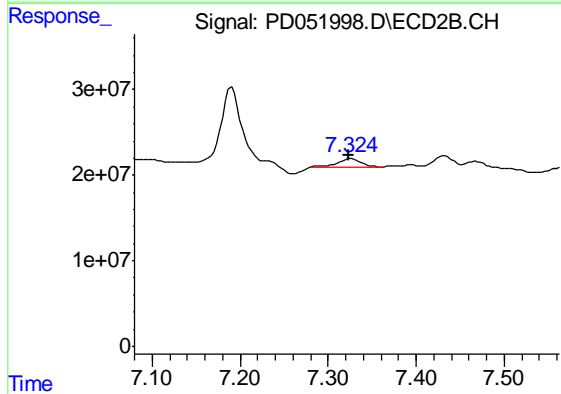
#17 4,4'-DDT  
 R.T.: 7.190 min  
 Delta R.T.: 0.004 min  
 Response: 143829307  
 Conc: 7.10 ng/ml



#19 Endosulfan Sulfate

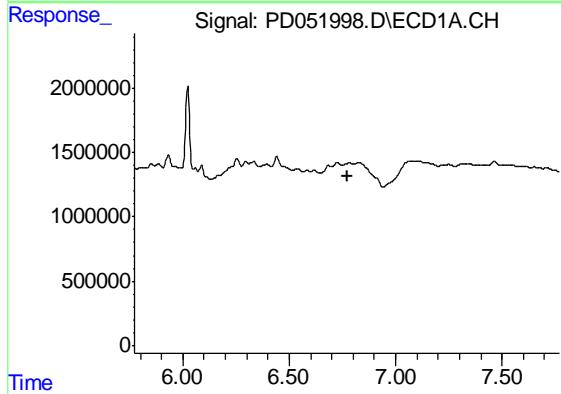
R.T.: 0.000 min  
 Exp R.T. : 6.298 min  
 Response: 0  
 Conc: N.D.

Instrument :  
 ECD\_D  
 ClientSampleId :  
 PST-026-SW071-031819



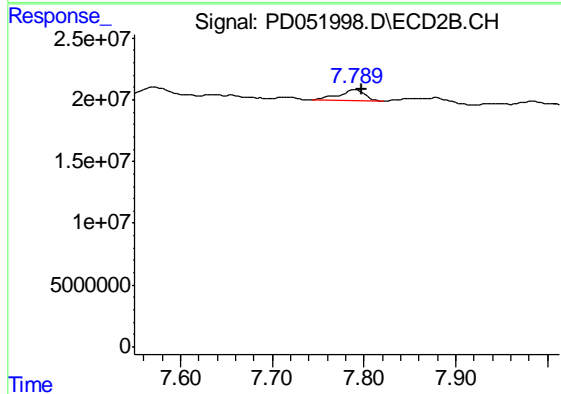
#19 Endosulfan Sulfate

R.T.: 7.326 min  
 Delta R.T.: 0.002 min  
 Response: 18699709  
 Conc: 0.80 ng/ml



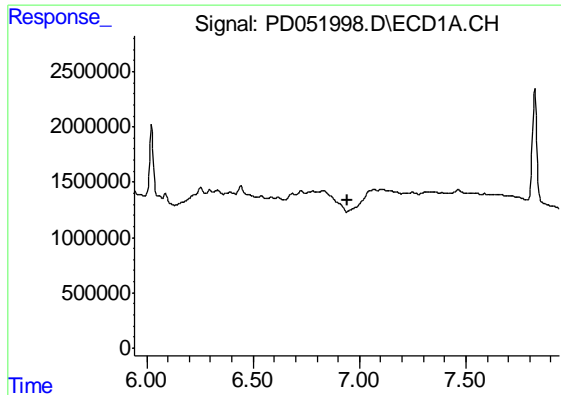
#21 Endrin ketone

R.T.: 0.000 min  
 Exp R.T. : 6.773 min  
 Response: 0  
 Conc: N.D.



#21 Endrin ketone

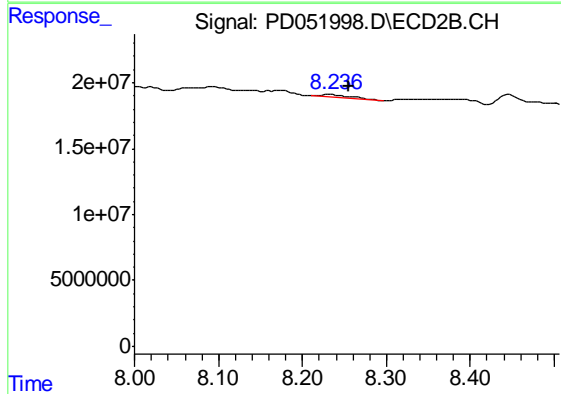
R.T.: 7.790 min  
 Delta R.T.: -0.007 min  
 Response: 17833561  
 Conc: 0.79 ng/ml



#22 Mirex

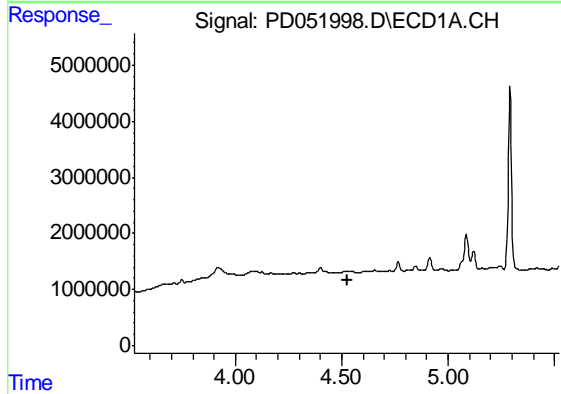
R.T.: 0.000 min  
 Exp R.T. : 6.942 min  
 Response: 0  
 Conc: N.D.

Instrument :  
 ECD\_D  
 ClientSampleId :  
 PST-026-SW071-031819



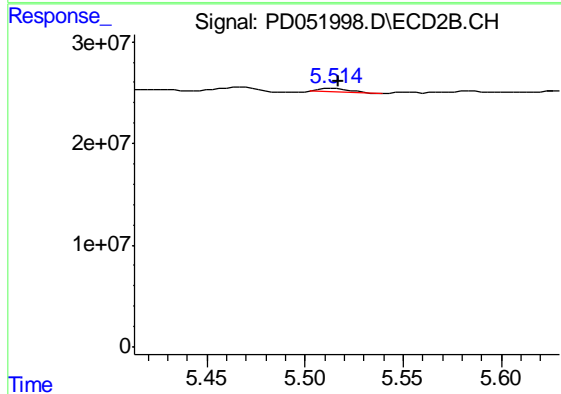
#22 Mirex

R.T.: 8.232 min  
 Delta R.T.: -0.023 min  
 Response: 4172559  
 Conc: 0.27 ng/ml



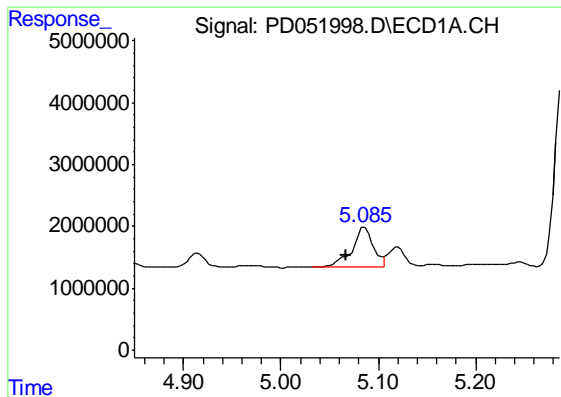
#24 Chlordane-2

R.T.: 0.000 min  
 Exp R.T. : 4.526 min  
 Response: 0  
 Conc: N.D.



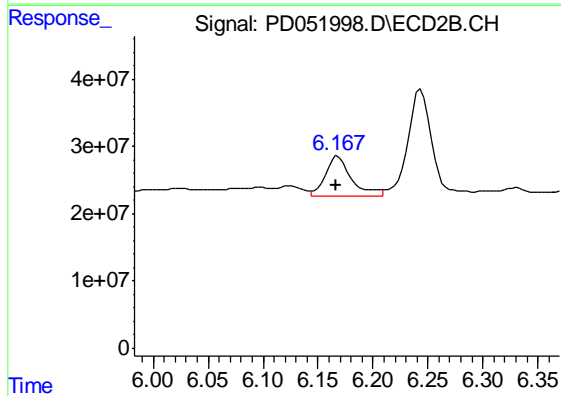
#24 Chlordane-2

R.T.: 5.516 min  
 Delta R.T.: -0.001 min  
 Response: 3989528  
 Conc: 2.81 ng/ml

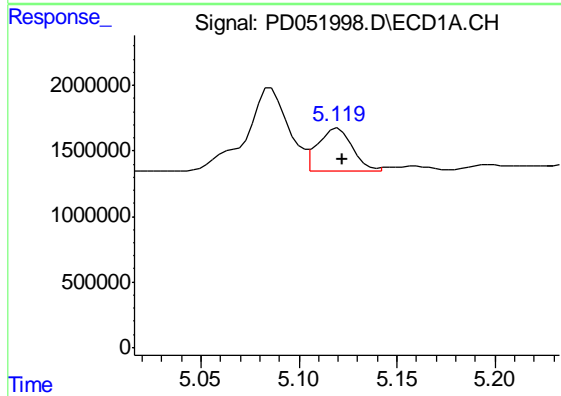


#25 Chlordane-3  
 R.T.: 5.086 min  
 Delta R.T.: 0.019 min  
 Response: 9377209  
 Conc: 40.29 ng/ml

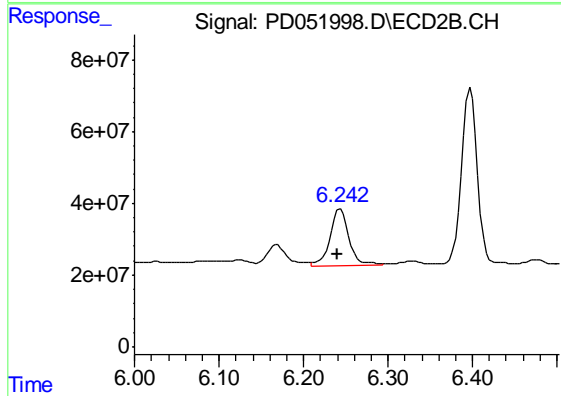
**Instrument :**  
 ECD\_D  
**ClientSampleId :**  
 PST-026-SW071-031819



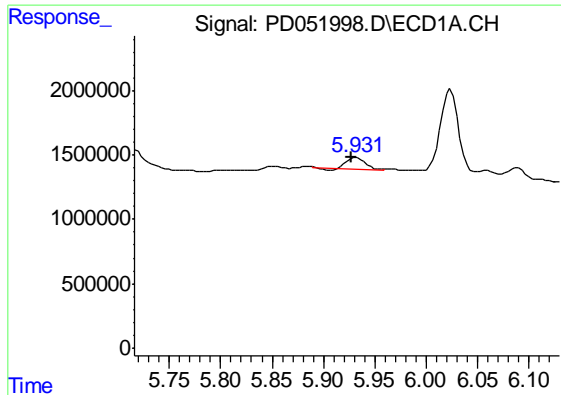
#25 Chlordane-3  
 R.T.: 6.168 min  
 Delta R.T.: 0.002 min  
 Response: 100716825  
 Conc: 22.62 ng/ml



#26 Chlordane-4  
 R.T.: 5.120 min  
 Delta R.T.: -0.002 min  
 Response: 4011144  
 Conc: 17.94 ng/ml



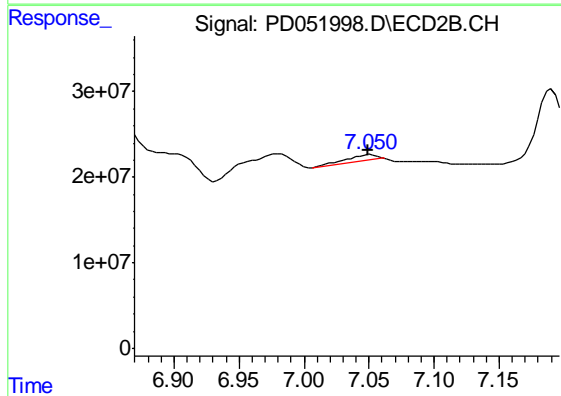
#26 Chlordane-4  
 R.T.: 6.244 min  
 Delta R.T.: 0.003 min  
 Response: 248760054  
 Conc: 47.50 ng/ml



#27 Chlordane-5

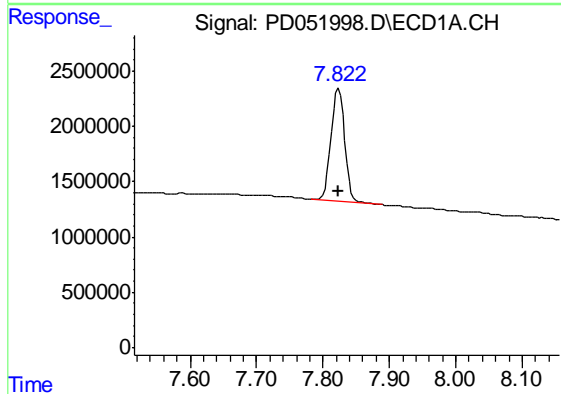
R.T.: 5.932 min  
Delta R.T.: 0.005 min  
Response: 965564  
Conc: 13.44 ng/ml

Instrument :  
ECD\_D  
ClientSampleId :  
PST-026-SW071-031819



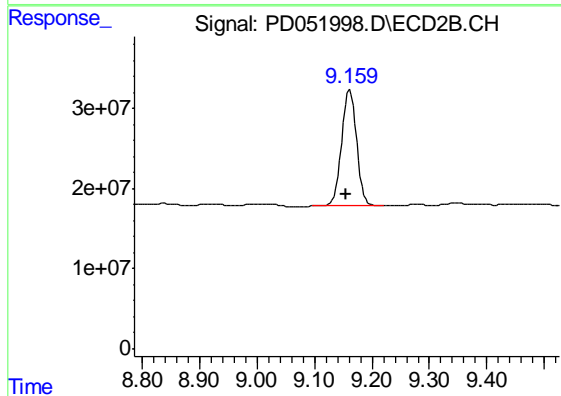
#27 Chlordane-5

R.T.: 7.051 min  
Delta R.T.: 0.002 min  
Response: 9714358  
Conc: 9.59 ng/ml



#28 Decachlorobiphenyl

R.T.: 7.824 min  
Delta R.T.: 0.000 min  
Response: 14548255  
Conc: 12.80 ng/ml



#28 Decachlorobiphenyl

R.T.: 9.161 min  
Delta R.T.: 0.006 min  
Response: 265744352  
Conc: 14.55 ng/ml