

Data Path : Z:\pestpcbsrv\HPCHEM1\ECD\_D\Data\PD032223\  
 Data File : PD074324.D  
 Signal(s) : Signal #1: ECD1A.ch Signal #2: ECD2B.ch  
 Acq On : 21 Mar 2023 08:01  
 Operator : AR\AJ  
 Sample : HEXANE  
 Misc :  
 ALS Vial : 1 Sample Multiplier: 1

Instrument :  
 ECD\_D  
 ClientSampleId :

Integration File signal 1: autoint1.e  
 Integration File signal 2: autoint2.e  
 Quant Time: Mar 21 21:27:14 2023  
 Quant Method : Z:\pestpcbsrv\HPCHEM1\ECD\_D\Method\PD031323CLP.M  
 Quant Title : GC Extractables  
 QLast Update : Tue Mar 14 03:05:06 2023  
 Response via : Initial Calibration  
 Integrator: ChemStation

Volume Inj. : 1 µl  
 Signal #1 Phase : ZB-MR2 Signal #2 Phase: ZB-MR2  
 Signal #1 Info : 30M x 0.32mm x0.5 Signal #2 Info : 30M x 0.32mm x 0.25µm

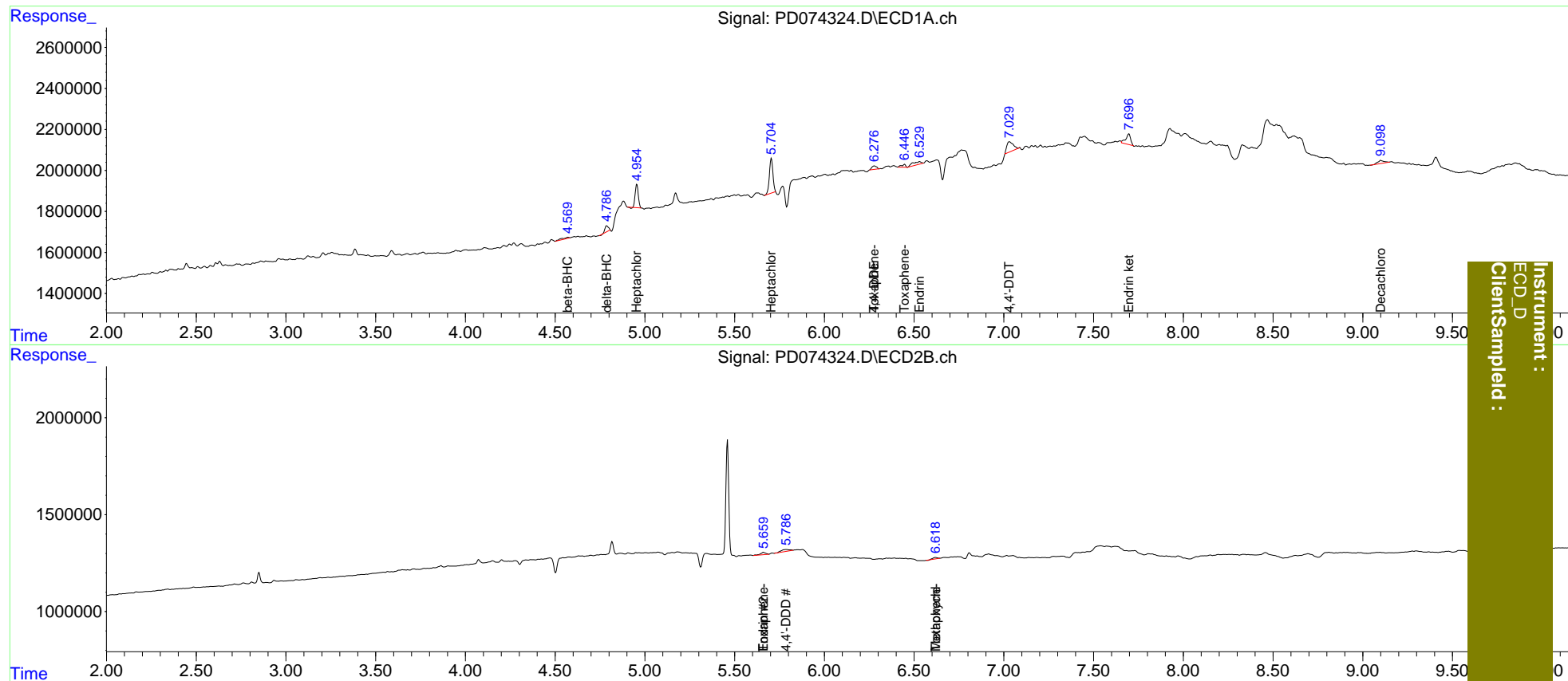
Compound	RT#1	RT#2	Resp#1	Resp#2	ng/ml	ng/ml
-----						
System Monitoring Compounds						
1) SA Tetrachlo...	3.590f	0.000	243241	0	<MDL	N.D. #
27) SA Decachlor...	9.100	0.000	375558	0	0.137	N.D. #
Target Compounds						
4) MA Heptachlor	4.955	0.000	1365997	0	0.361	N.D. #
5) MB Aldrin	0.000	4.203f	0	105068	N.D.	<MDL
6) B beta-BHC	4.571f	3.904	205484	80930	0.122	<MDL #
7) B delta-BHC	4.788	0.000	403936	0	0.111	N.D. #
8) B Heptachlo...	5.705	0.000	2327678	0	0.709	N.D. #
12) B 4,4'-DDE	6.278f	0.000	314939	0	0.105	N.D. #
14) MA Endrin	6.531f	5.661	499946	246117	0.190	0.183
16) A 4,4'-DDD	0.000	5.789	0	312587	N.D.	0.265
17) MA 4,4'-DDT	7.031	0.000	1277532	0	0.509	N.D. #
20) A Methoxychlor	0.000	6.620	0	130298	N.D.	0.212
21) B Endrin ke...	7.697	0.000	977847	0	0.330	N.D. #
22) Toxaphene-1	6.278	0.000	314939	0	13.421	N.D. #
23) Toxaphene-2	6.447	5.661	224637	246117	7.575	26.205 #
25) Toxaphene-4	7.125f	6.620	-19732	130298	N.D.	3.900
-----						

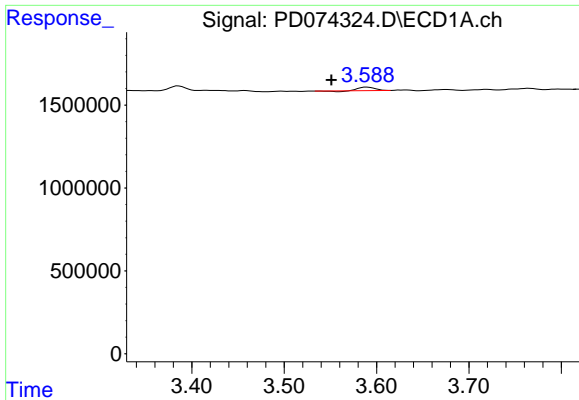
(f)=RT Delta > 1/2 Window (#)=Amounts differ by > 25% (m)=manual int.

Data Path : Z:\pestpcbsrv\HPCHEM1\ECD\_D\Data\PD032223\  
 Data File : PD074324.D  
 Signal(s) : Signal #1: ECD1A.ch Signal #2: ECD2B.ch  
 Acq On : 21 Mar 2023 08:01  
 Operator : AR\AJ  
 Sample : HEXANE  
 Misc :  
 ALS Vial : 1 Sample Multiplier: 1

Integration File signal 1: autoint1.e  
 Integration File signal 2: autoint2.e  
 Quant Time: Mar 21 21:27:14 2023  
 Quant Method : Z:\pestpcbsrv\HPCHEM1\ECD\_D\Method\PD031323CLP.M  
 Quant Title : GC Extractables  
 QLast Update : Tue Mar 14 03:05:06 2023  
 Response via : Initial Calibration  
 Integrator: ChemStation

Volume Inj. : 1 µl  
 Signal #1 Phase : ZB-MR1 Signal #2 Phase: ZB-MR2  
 Signal #1 Info : 30M x 0.32mm x0.5 Signal #2 Info : 30M x 0.32mm x 0.25µm

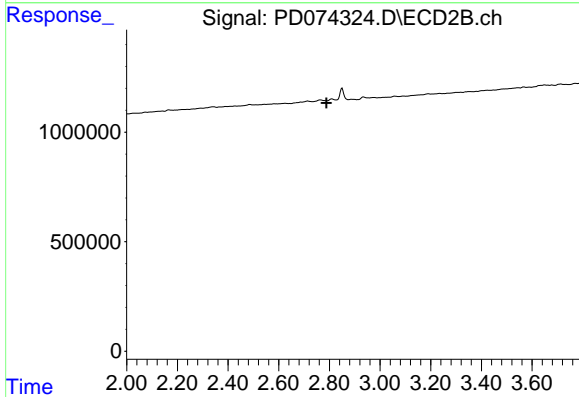




#1 Tetrachloro-m-xylene

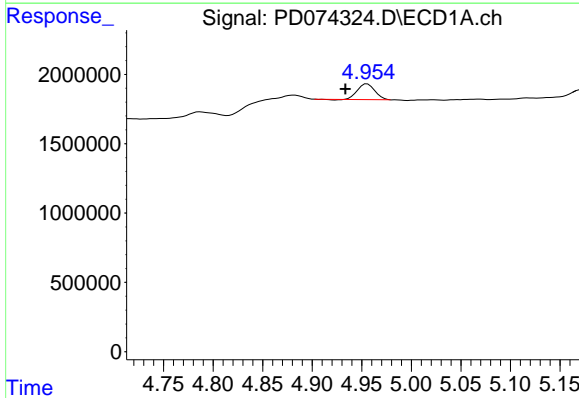
R.T.: 3.590 min  
 Delta R.T.: 0.039 min  
 Response: 243241  
 Conc: N.D.

Instrument :  
 ECD\_D  
 ClientSampleId :



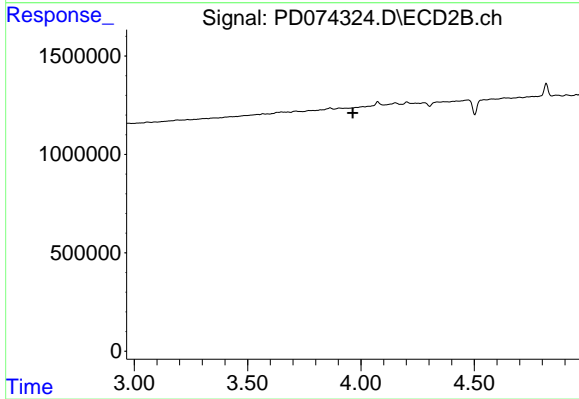
#1 Tetrachloro-m-xylene

R.T.: 0.000 min  
 Exp R.T. : 2.789 min  
 Response: 0  
 Conc: N.D.



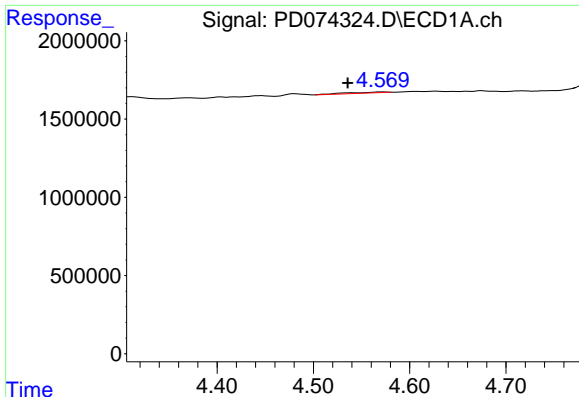
#4 Heptachlor

R.T.: 4.955 min  
 Delta R.T.: 0.022 min  
 Response: 1365997  
 Conc: 0.36 ng/ml



#4 Heptachlor

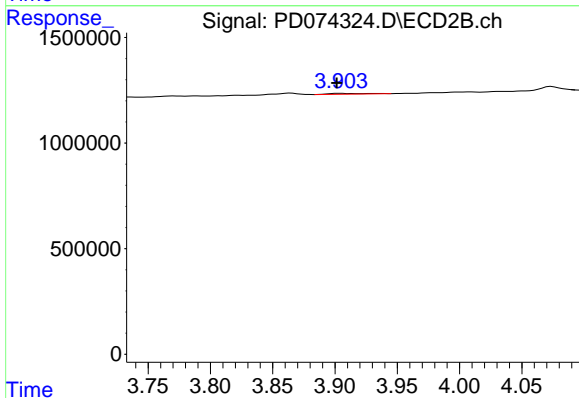
R.T.: 0.000 min  
 Exp R.T. : 3.964 min  
 Response: 0  
 Conc: N.D.



#6 beta-BHC

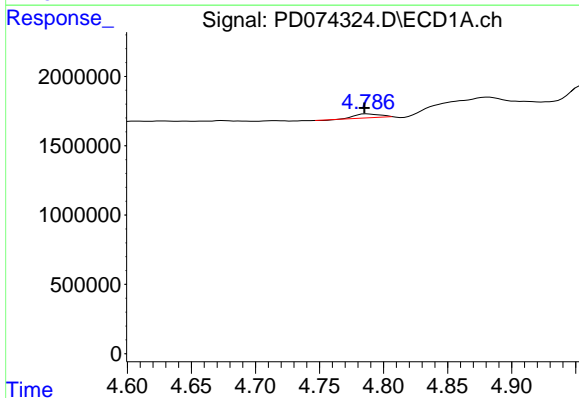
R.T.: 4.571 min  
 Delta R.T.: 0.036 min  
 Response: 205484  
 Conc: 0.12 ng/ml

Instrument :  
 ECD\_D  
 ClientSampleId :



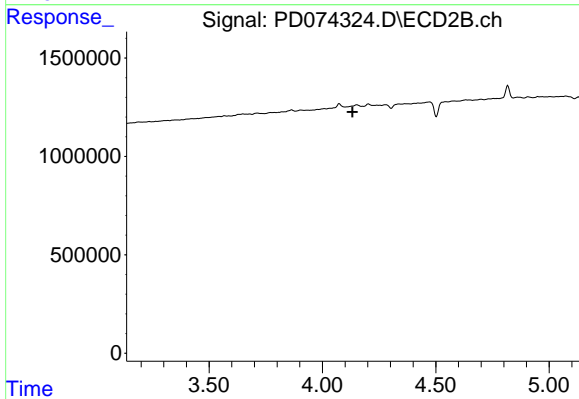
#6 beta-BHC

R.T.: 3.904 min  
 Delta R.T.: 0.003 min  
 Response: 80930  
 Conc: N.D.



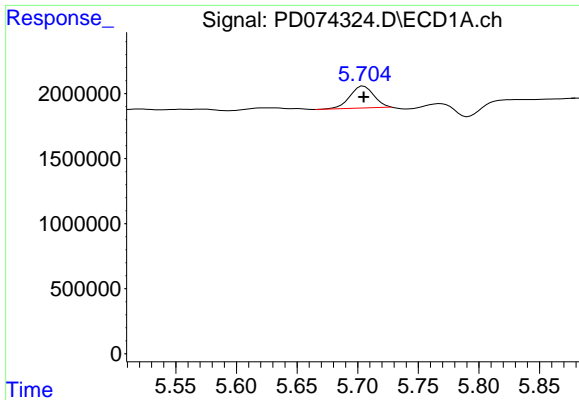
#7 delta-BHC

R.T.: 4.788 min  
 Delta R.T.: 0.003 min  
 Response: 403936  
 Conc: 0.11 ng/ml



#7 delta-BHC

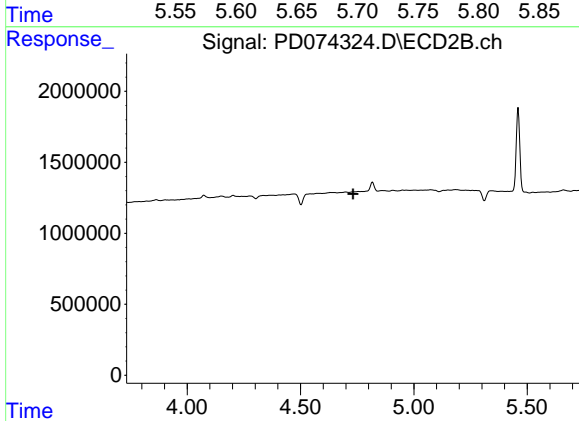
R.T.: 0.000 min  
 Exp R.T. : 4.133 min  
 Response: 0  
 Conc: N.D.



#8 Heptachlor epoxide

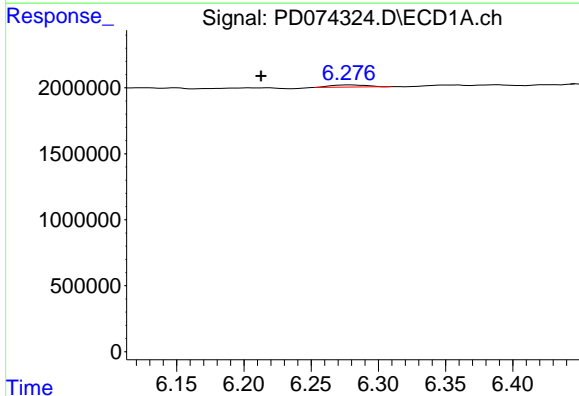
R.T.: 5.705 min  
 Delta R.T.: 0.000 min  
 Response: 2327678  
 Conc: 0.71 ng/ml

Instrument :  
 ECD\_D  
 ClientSampleId :



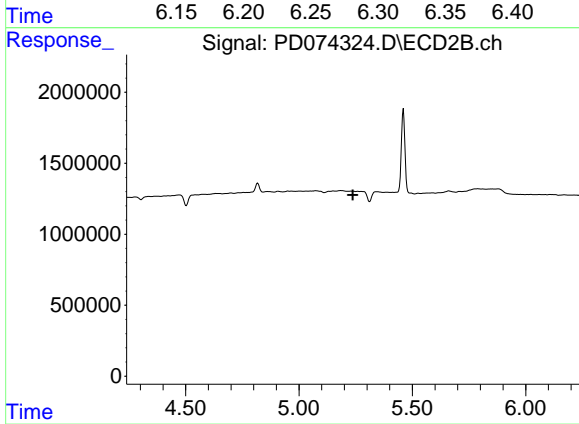
#8 Heptachlor epoxide

R.T.: 0.000 min  
 Exp R.T. : 4.732 min  
 Response: 0  
 Conc: N.D.



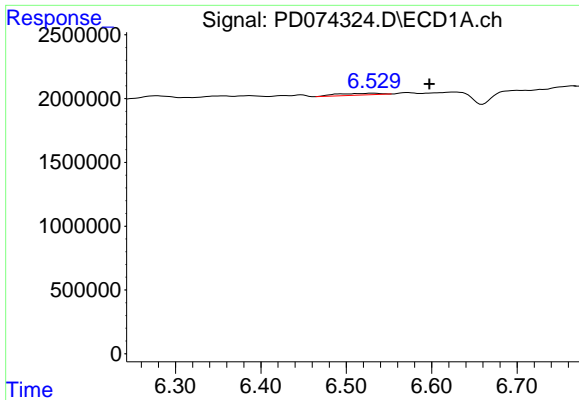
#12 4,4'-DDE

R.T.: 6.278 min  
 Delta R.T.: 0.066 min  
 Response: 314939  
 Conc: 0.11 ng/ml



#12 4,4'-DDE

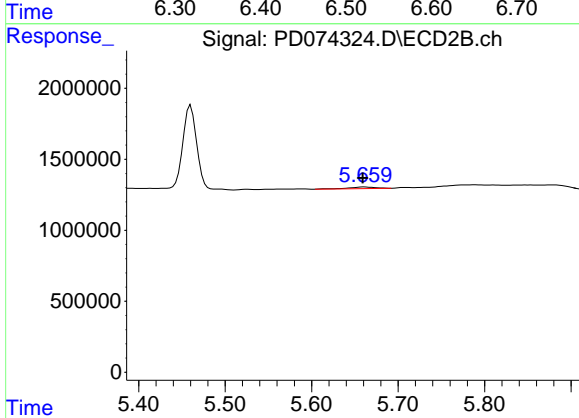
R.T.: 0.000 min  
 Exp R.T. : 5.237 min  
 Response: 0  
 Conc: N.D.



#14 Endrin

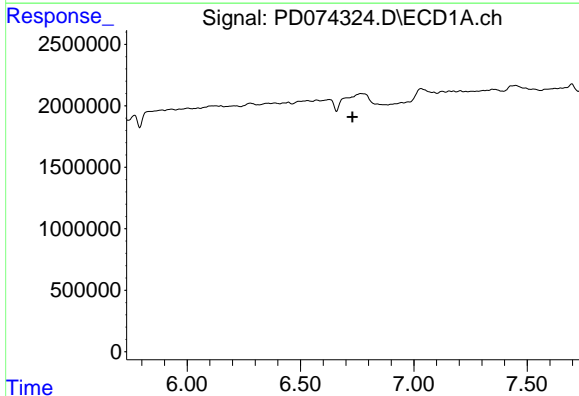
R.T.: 6.531 min  
 Delta R.T.: -0.066 min  
 Response: 499946  
 Conc: 0.19 ng/ml

Instrument :  
 ECD\_D  
 ClientSampleId :



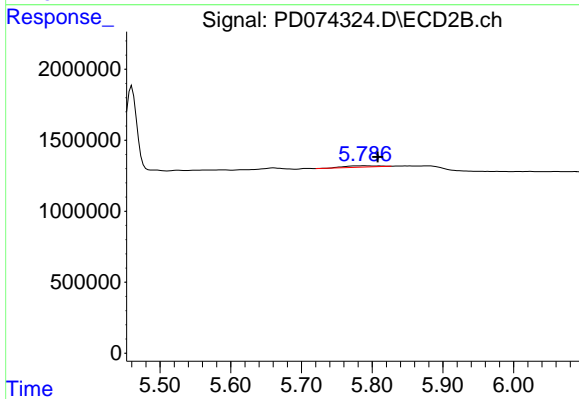
#14 Endrin

R.T.: 5.661 min  
 Delta R.T.: 0.001 min  
 Response: 246117  
 Conc: 0.18 ng/ml



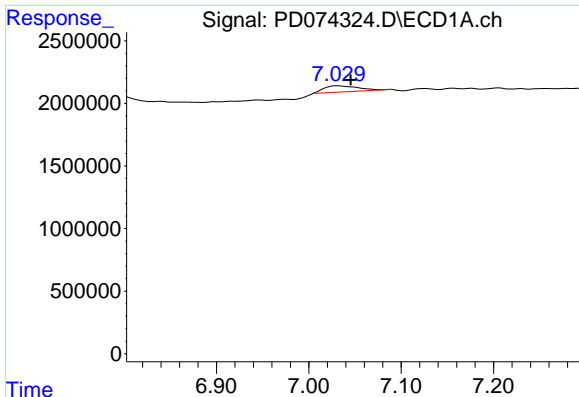
#16 4,4'-DDD

R.T.: 0.000 min  
 Exp R.T. : 6.730 min  
 Response: 0  
 Conc: N.D.



#16 4,4'-DDD

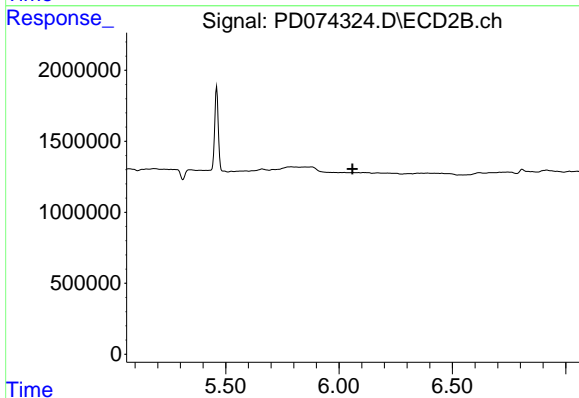
R.T.: 5.789 min  
 Delta R.T.: -0.019 min  
 Response: 312587  
 Conc: 0.27 ng/ml



#17 4,4'-DDT

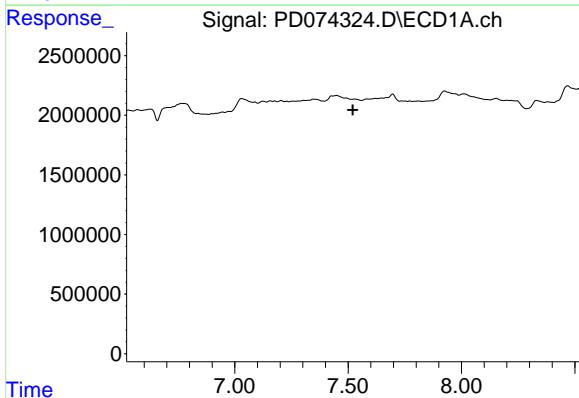
R.T.: 7.031 min  
 Delta R.T.: -0.014 min  
 Response: 1277532  
 Conc: 0.51 ng/ml

Instrument :  
 ECD\_D  
 ClientSampleId :



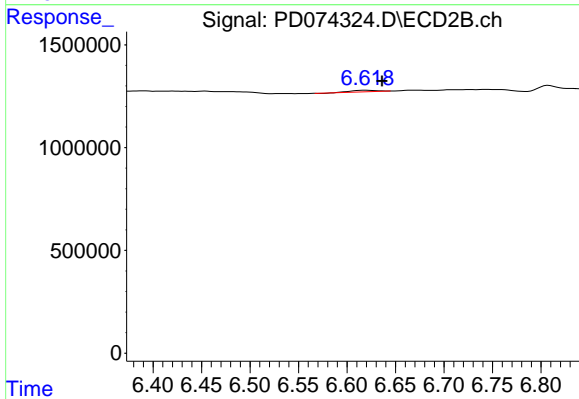
#17 4,4'-DDT

R.T.: 0.000 min  
 Exp R.T. : 6.059 min  
 Response: 0  
 Conc: N.D.



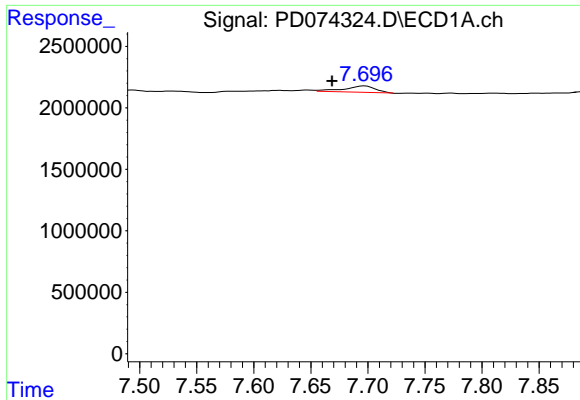
#20 Methoxychlor

R.T.: 0.000 min  
 Exp R.T. : 7.521 min  
 Response: 0  
 Conc: N.D.



#20 Methoxychlor

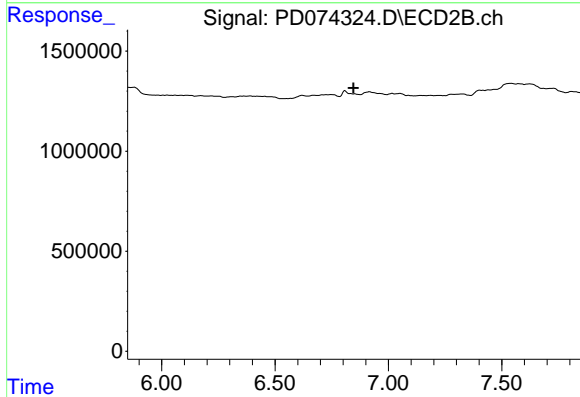
R.T.: 6.620 min  
 Delta R.T.: -0.016 min  
 Response: 130298  
 Conc: 0.21 ng/ml



#21 Endrin ketone

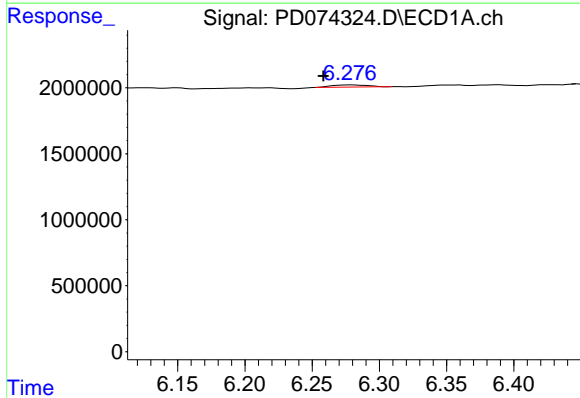
R.T.: 7.697 min  
 Delta R.T.: 0.029 min  
 Response: 977847  
 Conc: 0.33 ng/ml

Instrument :  
 ECD\_D  
 ClientSampleId :



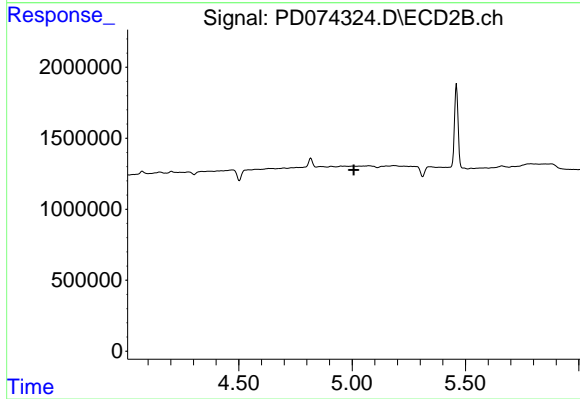
#21 Endrin ketone

R.T.: 0.000 min  
 Exp R.T. : 6.846 min  
 Response: 0  
 Conc: N.D.



#22 Toxaphene-1

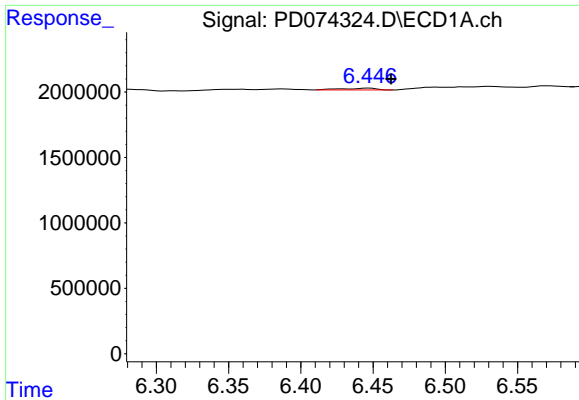
R.T.: 6.278 min  
 Delta R.T.: 0.020 min  
 Response: 314939  
 Conc: 13.42 ng/ml



#22 Toxaphene-1

R.T.: 0.000 min  
 Exp R.T. : 5.007 min  
 Response: 0  
 Conc: N.D.

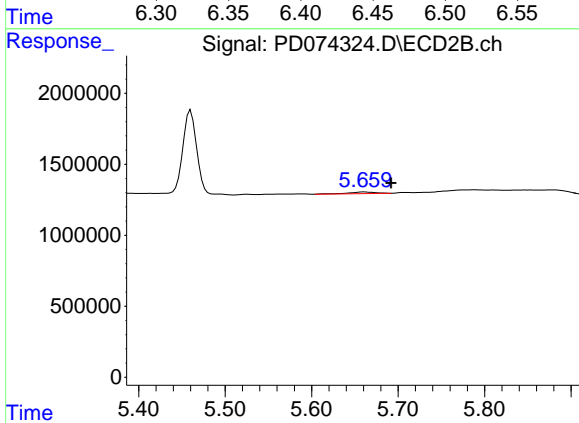




#23 Toxaphene-2

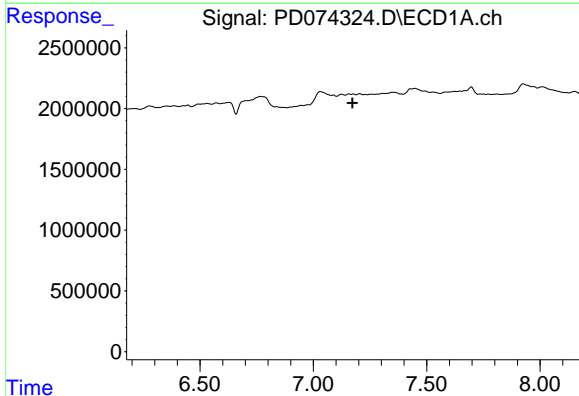
R.T.: 6.447 min  
 Delta R.T.: -0.015 min  
 Response: 224637  
 Conc: 7.57 ng/ml

Instrument :  
 ECD\_D  
 ClientSampleId :



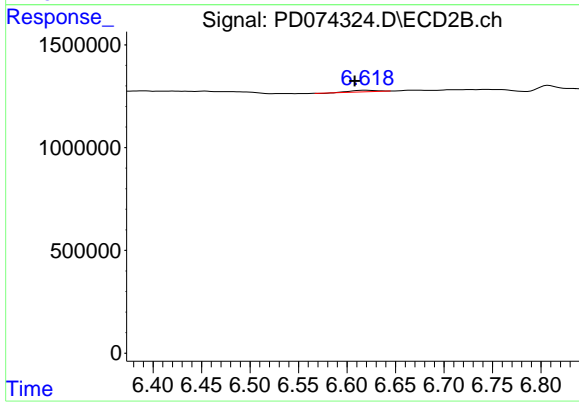
#23 Toxaphene-2

R.T.: 5.661 min  
 Delta R.T.: -0.031 min  
 Response: 246117  
 Conc: 26.20 ng/ml



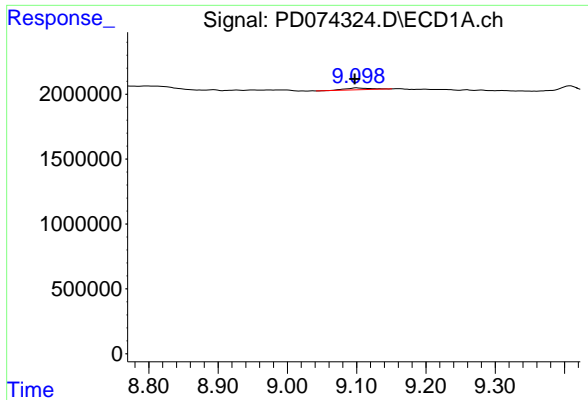
#25 Toxaphene-4

R.T.: 7.125 min  
 Delta R.T.: -0.048 min  
 Response: -19732  
 Conc: N.D.



#25 Toxaphene-4

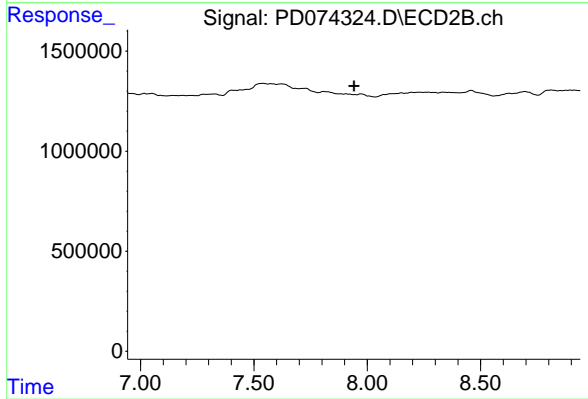
R.T.: 6.620 min  
 Delta R.T.: 0.012 min  
 Response: 130298  
 Conc: 3.90 ng/ml



#27 Decachlorobiphenyl

R.T.: 9.100 min  
Delta R.T.: 0.003 min  
Response: 375558  
Conc: 0.14 ng/ml

Instrument :  
ECD\_D  
ClientSampleId :



#27 Decachlorobiphenyl

R.T.: 0.000 min  
Exp R.T. : 7.942 min  
Response: 0  
Conc: N.D.