

Data Path : Z:\pestpcbsrv\HPCHEM1\ECD_D\Data\PD032319\
 Data File : PD052041.D
 Signal(s) : Signal #1: ECD1A.CH Signal #2: ECD2B.CH
 Acq On : 23 Mar 2019 19:52
 Operator : AJ\SJ
 Sample : K2031-09MS
 Misc :
 ALS Vial : 35 Sample Multiplier: 1

Instrument :
 ECD_D
 ClientSampleId :

Integration File signal 1: autoint1.e
 Integration File signal 2: autoint2.e
 Quant Time: Mar 25 07:43:28 2019
 Quant Method : Z:\pestpcbsrv\HPCHEM1\ECD_D\Method\PD032119CLP.M
 Quant Title : GC Extractables
 QLast Update : Fri Mar 22 08:47:43 2019
 Response via : Initial Calibration
 Integrator: ChemStation 6890 Scale Mode: Large solvent peaks clipped

Volume Inj. : 1 µl
 Signal #1 Phase : ZB-MR2 Signal #2 Phase: ZB-MR1
 Signal #1 Info : 30M x 0.32mm x0.2 Signal #2 Info : 30M x 0.32mm x 0.50µm

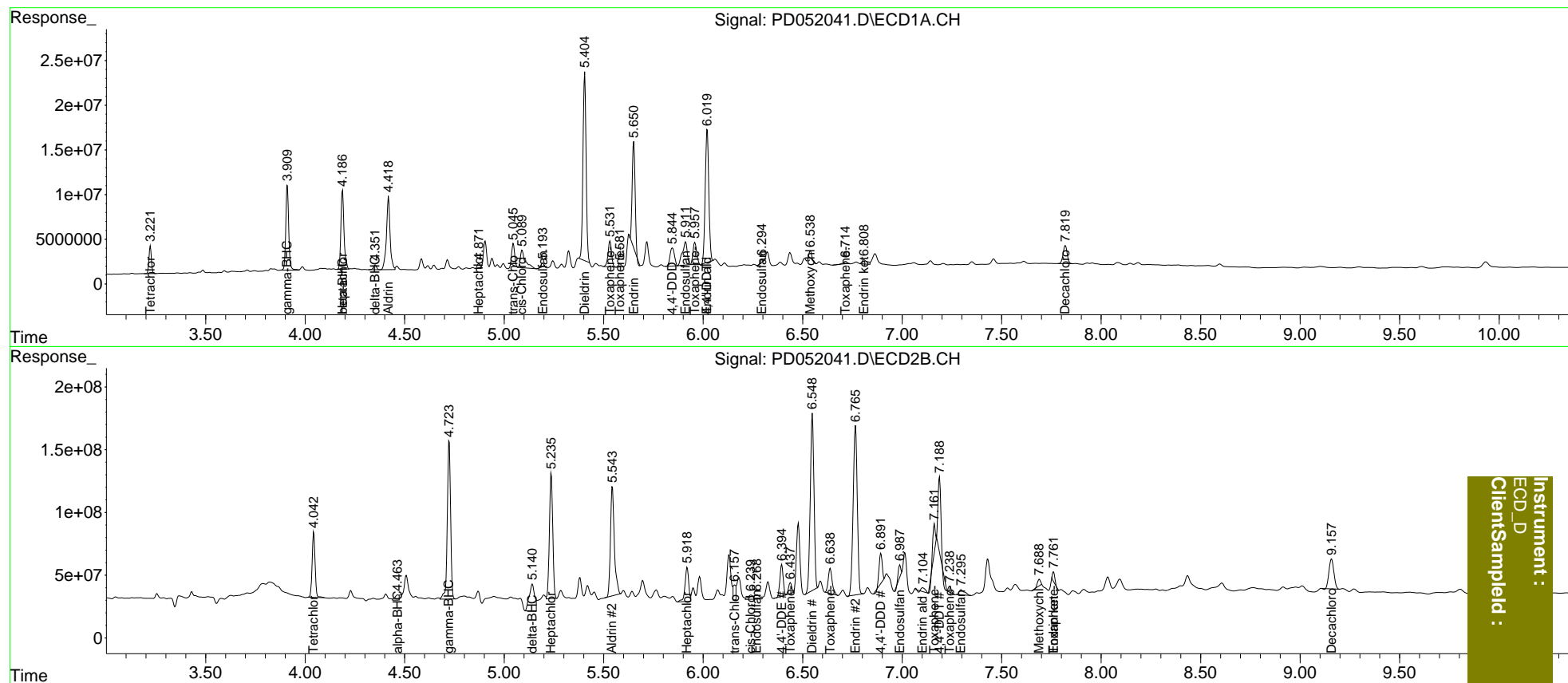
Compound	RT#1	RT#2	Resp#1	Resp#2	ng/ml	ng/ml
System Monitoring Compounds						
1) SA Tetrachlo...	3.222	4.043	26431583	542.1E6	18.877	16.912
27) SA Decachlor...	7.820	9.158	28774965	409.3E6	24.618	20.374
Target Compounds						
2) A alpha-BHC	0.000	4.465f	0	53531107	N.D.	1.095
3) MA gamma-BHC...	3.911	4.724	96208139	1438.8E6	44.801	32.200 #
4) MA Heptachlor	4.188	5.237	95434026	1172.3E6	42.843	25.430 #
5) MB Aldrin	4.419	5.544	103.3E6	1188.8E6	46.812	27.314 #
6) B beta-BHC	4.188f	0.000	95434026	0	97.044	N.D. #
7) B delta-BHC	4.353	5.142f	5653863	387.3E6	2.483	8.160 #
8) B Heptachlo...	4.873	5.920	5062054	345.4E6	2.328	8.503 #
9) A Endosulfan I	5.194	6.270	2006904	64137895	0.974	1.779 #
10) B trans-Chl...	5.046	6.158	23350375	102.6E6	10.344	2.525 #
11) B cis-Chlor...	5.090	6.240	33908248	59108435	15.371	1.523 #
12) B 4,4'-DDE	5.289	6.395	-928165	287.0E6	N.D.	7.713
13) MA Dieldrin	5.405	6.549	230.0E6	1834.6E6	98.076	50.344 #
14) MA Endrin	5.651	6.766	120.6E6	1935.0E6	57.869	65.306
15) B Endosulfa...	5.912	6.989	43644760	70432396	20.342	2.281 #
16) A 4,4'-DDD	5.846f	6.893	31461030	244.6E6	17.359	8.217 #
17) MA 4,4'-DDT	6.021	7.188	186.1E6	559.2E6	100.146	21.819 #
18) B Endrin al...	6.021f	7.103	186.1E6	43231281	109.406	1.688 #
19) B Endosulfa...	6.297	7.296	2114605	80575020	1.089	2.772 #
20) A Methoxychlor	6.539	7.689f	5926314	56183603	5.948	4.739
21) B Endrin ke...	6.809f	7.761f	8439311	65371496	3.994	2.374 #
22) Toxaphene-1	5.532	6.439	35054227	92718695	2537.474	558.752 #
23) Toxaphene-2	5.583	6.639	3441621	276.3E6	147.867	877.773 #
24) Toxaphene-3	5.958	7.162	31814614	136.4E6	826.825	502.054 #
25) Toxaphene-4	0.000	7.239	0	48506234	N.D.	67.139
26) Toxaphene-5	6.716	7.761	3339653	65371496	74.426	215.035 #

(f)=RT Delta > 1/2 Window (#)=Amounts differ by > 25% (m)=manual int.

Data Path : Z:\pestpcbsrv\HPCHEM1\ECD_D\Data\PD032319\
 Data File : PD052041.D
 Signal(s) : Signal #1: ECD1A.CH Signal #2: ECD2B.CH
 Acq On : 23 Mar 2019 19:52
 Operator : AJ\SJ
 Sample : K2031-09MS
 Misc :
 ALS Vial : 35 Sample Multiplier: 1

Integration File signal 1: autoint1.e
 Integration File signal 2: autoint2.e
 Quant Time: Mar 25 07:43:28 2019
 Quant Method : Z:\pestpcbsrv\HPCHEM1\ECD_D\Method\PD032119CLP.M
 Quant Title : GC Extractables
 QLast Update : Fri Mar 22 08:47:43 2019
 Response via : Initial Calibration
 Integrator: ChemStation 6890 Scale Mode: Large solvent peaks clipped

Volume Inj. : 1 µl
 Signal #1 Phase : ZB-MR2 Signal #2 Phase: ZB-MR1
 Signal #1 Info : 30M x 0.32mm x0.2 Signal #2 Info : 30M x 0.32mm x 0.50µm



Instrument :
 ECD_D
 ClientSampleId :