

Data Path : Z:\pestpcbsrv\HPCHEM1\ECD_D\Data\PD032319\
 Data File : PD052010.D
 Signal(s) : Signal #1: ECD1A.CH Signal #2: ECD2B.CH
 Acq On : 23 Mar 2019 10:54
 Operator : AJ\SJ
 Sample : K1962-07
 Misc :
 ALS Vial : 7 Sample Multiplier: 1

Instrument :
 ECD_D
ClientSampleId :
 PEST-GPC-BLANK-SPIKE

Integration File signal 1: autoint1.e
 Integration File signal 2: autoint2.e
 Quant Time: Mar 25 07:39:37 2019
 Quant Method : Z:\pestpcbsrv\HPCHEM1\ECD_D\Method\PD032119CLP.M
 Quant Title : GC Extractables
 QLast Update : Fri Mar 22 08:47:43 2019
 Response via : Initial Calibration
 Integrator: ChemStation 6890 Scale Mode: Large solvent peaks clipped

Volume Inj. : 1 µl
 Signal #1 Phase : ZB-MR2 Signal #2 Phase: ZB-MR1
 Signal #1 Info : 30M x 0.32mm x0.2 Signal #2 Info : 30M x 0.32mm x 0.50µm

Compound	RT#1	RT#2	Resp#1	Resp#2	ng/ml	ng/ml
----------	------	------	--------	--------	-------	-------

System Monitoring Compounds

Target Compounds

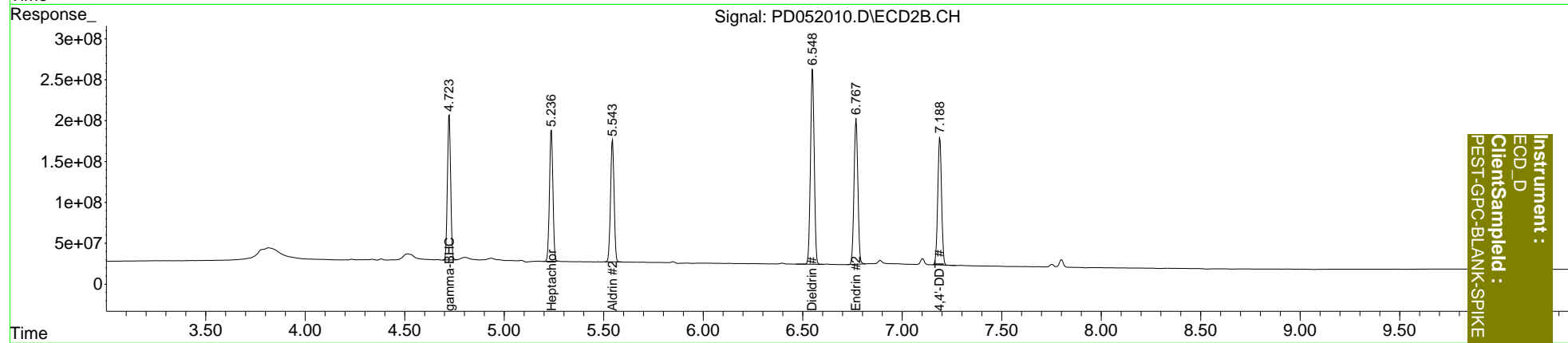
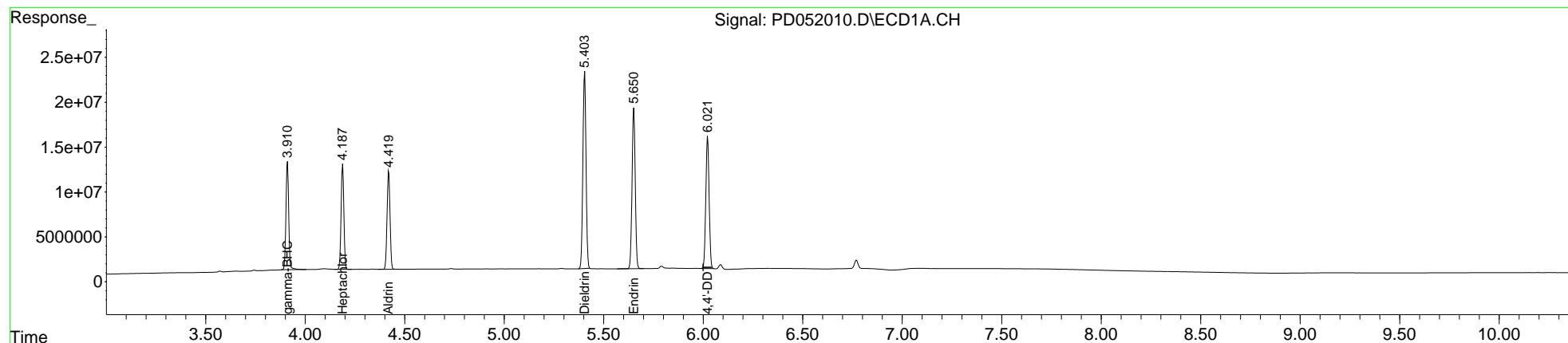
3) MA gamma-BHC...	3.911	4.724	114.5E6	1982.2E6	53.326	44.360
4) MA Heptachlor	4.188	5.237	112.4E6	1937.6E6	50.467	42.031
5) MB Aldrin	4.420	5.544	111.5E6	1858.4E6	50.549	42.699
13) MA Dieldrin	5.405	6.550	240.0E6	3129.8E6	102.341	85.886
14) MA Endrin	5.652	6.769	197.3E6	2371.6E6	94.631	80.043
17) MA 4,4'-DDT	6.023	7.190	170.8E6	2073.5E6	91.897	80.900

(f)=RT Delta > 1/2 Window (#)=Amounts differ by > 25% (m)=manual int.

Data Path : Z:\pestpcbsrv\HPCHEM1\ECD_D\Data\PD032319\
 Data File : PD052010.D
 Signal(s) : Signal #1: ECD1A.CH Signal #2: ECD2B.CH
 Acq On : 23 Mar 2019 10:54
 Operator : AJ\SJ
 Sample : K1962-07
 Misc :
 ALS Vial : 7 Sample Multiplier: 1

Integration File signal 1: autoint1.e
 Integration File signal 2: autoint2.e
 Quant Time: Mar 25 07:39:37 2019
 Quant Method : Z:\pestpcbsrv\HPCHEM1\ECD_D\Method\PD032119CLP.M
 Quant Title : GC Extractables
 QLast Update : Fri Mar 22 08:47:43 2019
 Response via : Initial Calibration
 Integrator: ChemStation 6890 Scale Mode: Large solvent peaks clipped

Volume Inj. : 1 µl
 Signal #1 Phase : ZB-MR2 Signal #2 Phase: ZB-MR1
 Signal #1 Info : 30M x 0.32mm x0.2 Signal #2 Info : 30M x 0.32mm x 0.50µm



Instrument :
 ECD_D
 ClientSampleId :
 PEST-GPC-BLANK-SPIKE