

Data Path : Z:\pestpcbsrv\HPCHEM1\ECD_D\Data\PD032323\
 Data File : PD074376.D
 Signal(s) : Signal #1: ECD1A.ch Signal #2: ECD2B.ch
 Acq On : 22 Mar 2023 11:05
 Operator : AR\AJ
 Sample : PB151544BS
 Misc :
 ALS Vial : 6 Sample Multiplier: 1

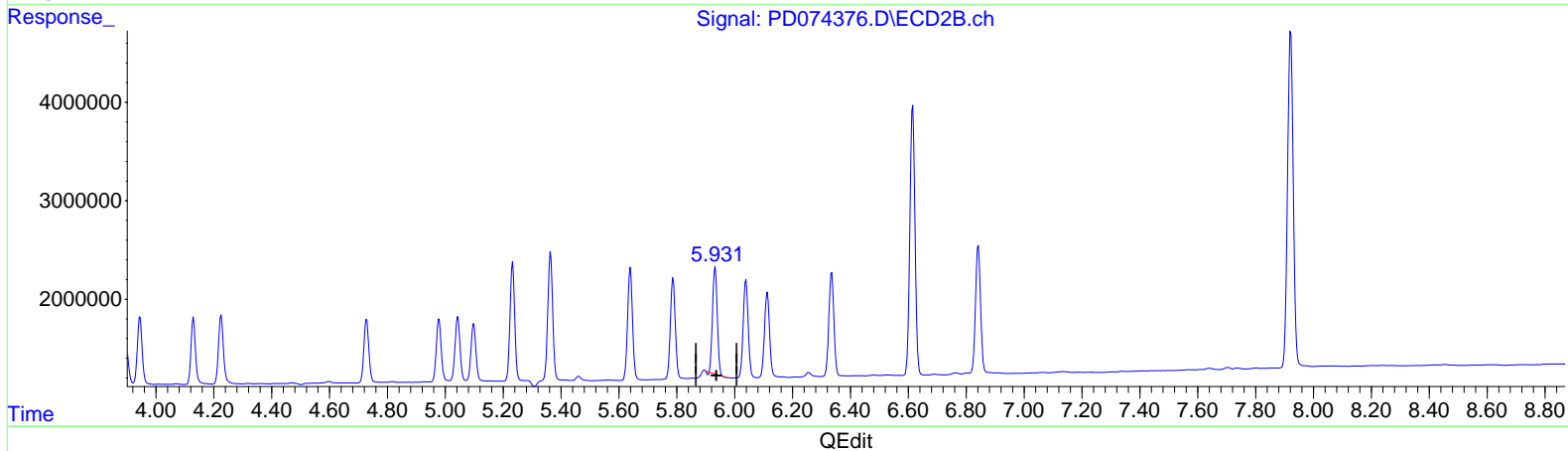
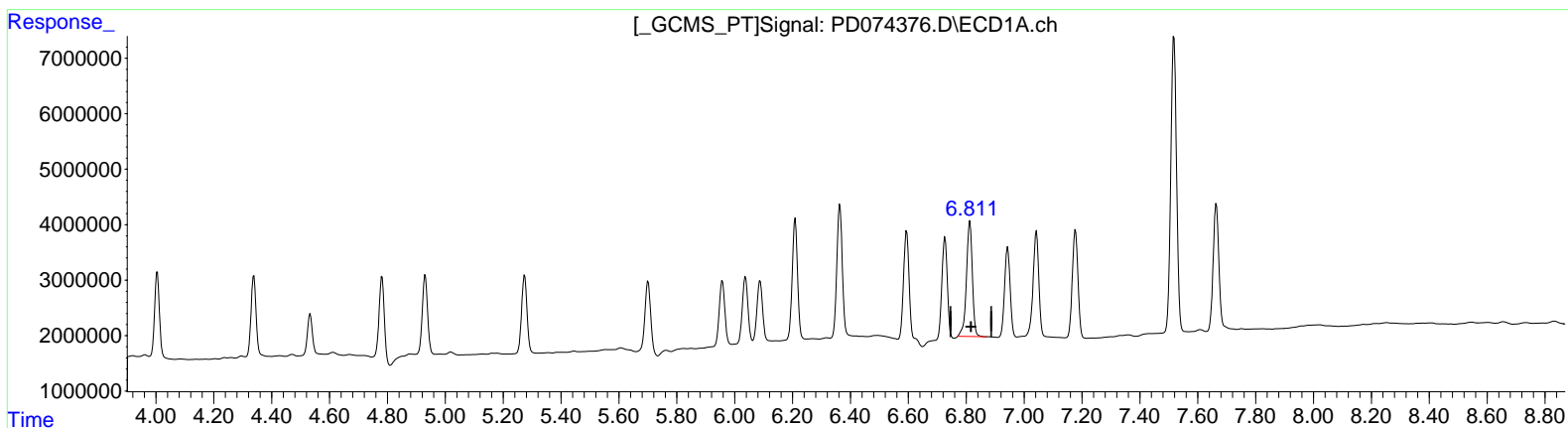
Instrument :
 ECD_D
 ClientSampleId :
 PLCS544

Manual Integrations APPROVED

Reviewed By : Abdul Mirza 03/23/2023
 Supervised By : Ankita Jodhani 03/23/2023

Integration File signal 1: autoint1.e
 Integration File signal 2: autoint2.e
 Quant Time: Mar 22 21:15:10 2023
 Quant Method : Z:\pestpcbsrv\HPCHEM1\ECD_D\Method\PD031323CLP.M
 Quant Title : GC Extractables
 QLast Update : Tue Mar 14 03:05:06 2023
 Response via : Initial Calibration
 Integrator: ChemStation

Volume Inj. : 1 µl
 Signal #1 Phase : ZB-MR1 Signal #2 Phase: ZB-MR2
 Signal #1 Info : 30M x 0.32mm x 0.5 Signal #2 Info : 30M x 0.32mm x 0.25µm



(15) Endosulfan II (B)
 6.813min 10.542 ng/ml
 response 29097585

(15) Endosulfan II #2 (B)
 5.933min 9.053 ng/ml
 response 12171754

Data Path : Z:\pestpcbsrv\HPCHEM1\ECD_D\Data\PD032323\
 Data File : PD074376.D
 Signal(s) : Signal #1: ECD1A.ch Signal #2: ECD2B.ch
 Acq On : 22 Mar 2023 11:05
 Operator : AR\AJ
 Sample : PB151544BS
 Misc :
 ALS Vial : 6 Sample Multiplier: 1

Instrument :

ECD_D

ClientSampleId :

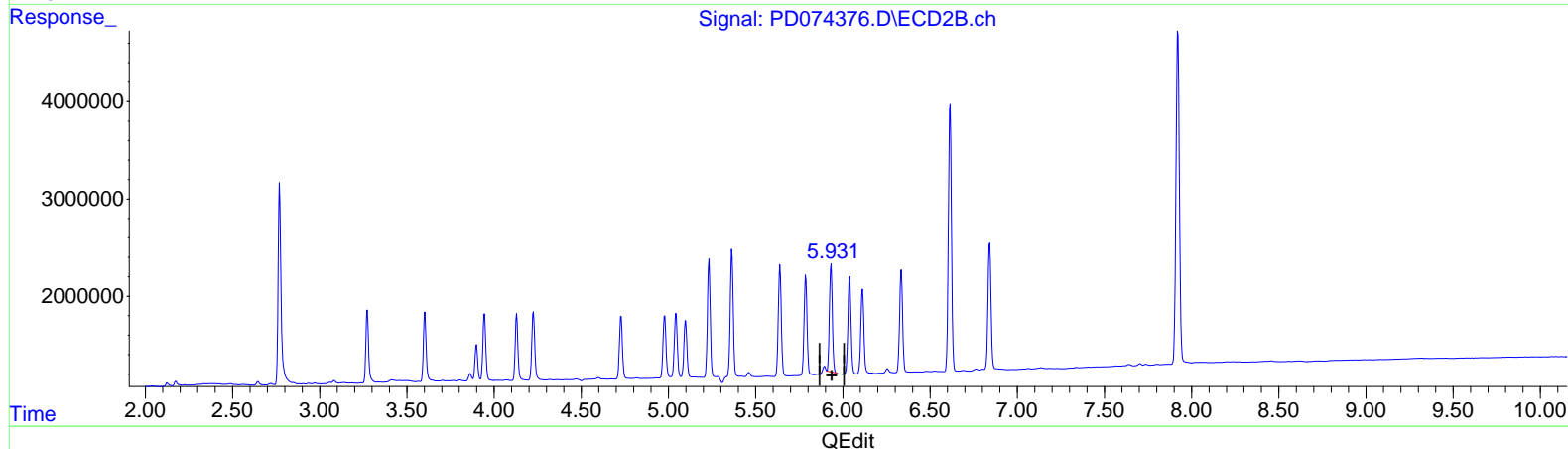
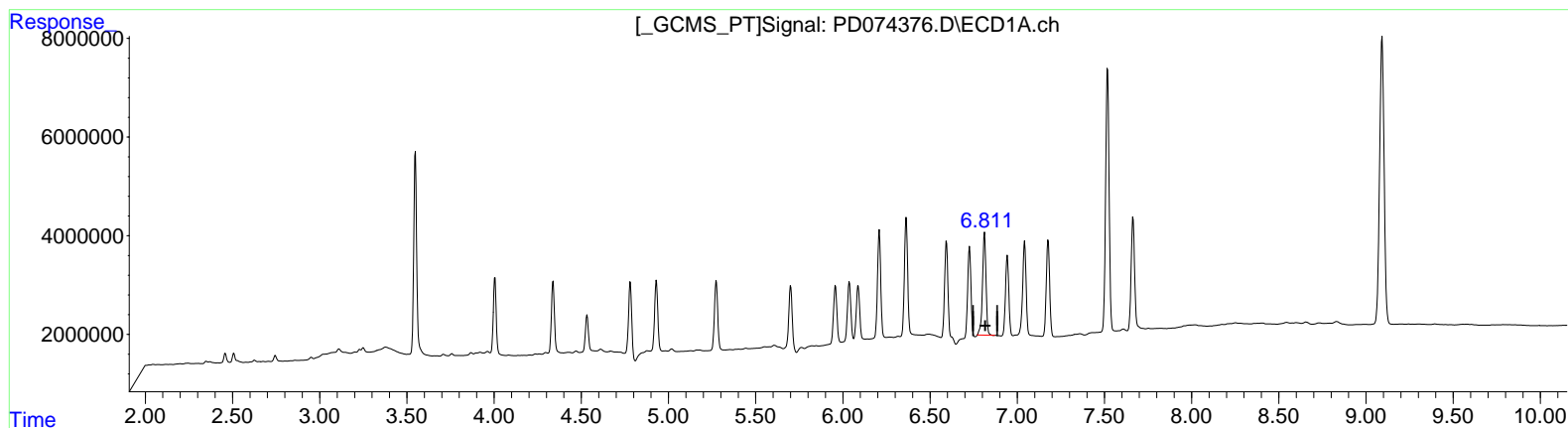
PLCS544

Manual IntegrationsAPPROVED

Reviewed By :Abdul Mirza 03/23/2023
 Supervised By :Ankita Jodhani 03/23/2023

Integration File signal 1: autoint1.e
 Integration File signal 2: autoint2.e
 Quant Time: Mar 22 21:15:10 2023
 Quant Method : Z:\pestpcbsrv\HPCHEM1\ECD_D\Method\PD031323CLP.M
 Quant Title : GC Extractables
 QLast Update : Tue Mar 14 03:05:06 2023
 Response via : Initial Calibration
 Integrator: ChemStation

Volume Inj. : 1 µl
 Signal #1 Phase : ZB-MR1 Signal #2 Phase: ZB-MR2
 Signal #1 Info : 30M x 0.32mm x0.5 Signal #2 Info : 30M x 0.32mm x 0.25µm



(15) Endosulfan II (B)
 6.813min 10.542 ng/ml
 response 29097585

(15) Endosulfan II #2 (B)
 5.931min 9.526 ng/ml m
 response 12807120