

Data Path : Z:\pestpcbsrv\HPCHEM1\ECD_D\Data\PD032522\
 Data File : PD068760.D
 Signal(s) : Signal #1: ECD1A.ch Signal #2: ECD2B.ch
 Acq On : 23 Mar 2022 14:32
 Operator : AR\AJ
 Sample : PSTDCCC050
 Misc :
 ALS Vial : 4 Sample Multiplier: 1

Instrument :
 ECD_D
 ClientSampleId :

Integration File signal 1: autoint1.e
 Integration File signal 2: autoint2.e
 Quant Time: Mar 23 15:44:00 2022
 Quant Method : Z:\pestpcbsrv\HPCHEM1\ECD_D\Method\PD031222.M
 Quant Title : GC Extractables
 QLast Update : Mon Mar 14 03:30:32 2022
 Response via : Initial Calibration
 Integrator: ChemStation

Volume Inj. : 2 µl
 Signal #1 Phase : ZB-MR2 Signal #2 Phase: ZB-MR1
 Signal #1 Info : 30M x 0.32mm x0.2 Signal #2 Info : 30M x 0.32mm x 0.50µm

	Compound	RT#1	RT#2	Resp#1	Resp#2	ng/ml	ng/ml

System Monitoring Compounds							
1)	SA Tetrachlo...	3.446	4.171	60380668	494.7E6	49.730	51.739
28)	SA Decachlor...	8.204	9.365	61604778	295.5E6	48.762	52.146
Target Compounds							
2)	A alpha-BHC	3.885	4.567	92290507	727.7E6	50.973	52.876
3)	MA gamma-BHC...	4.169	4.857	84626933	653.9E6	50.682	52.300
4)	MA Heptachlor	4.467	5.384	80360339	613.5E6	48.778	51.624
5)	MB Aldrin	4.715	5.697	80655225	606.1E6	50.469	52.802
6)	B beta-BHC	4.419	5.020	36785297	286.4E6	49.405	52.170
7)	B delta-BHC	4.623	5.246	83653960	634.8E6	51.189	52.783
8)	Heptachlo...	5.159	6.085	74482280	539.9E6	49.805	51.704
9)	A Endosulfan I	5.497	6.448	69870325	492.0E6	49.934	52.461
10)	B gamma-Chl...	5.385	6.322	75654489	537.3E6	49.873	52.128
11)	B alpha-Chl...	5.444	6.397	74307195	520.4E6	49.715	52.265
12)	B 4,4'-DDE	5.610	6.547	69262242	488.5E6	50.628	52.717
13)	MA Dieldrin	5.741	6.707	73060929	507.6E6	50.037	52.257
14)	MA Endrin	5.999	6.926	55567592	356.4E6	42.182	46.059
15)	B Endosulfa...	6.273	7.132	61886974	395.2E6	49.654	52.284
16)	A 4,4'-DDD	6.127	7.038	60413259	403.7E6	51.231	54.658
17)	MA 4,4'-DDT	6.367	7.341	54345099	375.1E6	45.213	51.058
18)	B Endrin al...	6.443	7.255	50966305	330.9E6	51.339	54.684
19)	B Endosulfa...	6.656	7.480	63383131	388.3E6	49.564	52.789
20)	A Methoxychlor	6.918	7.794	30904487	185.6E6	44.593	50.915
21)	B Endrin ke...	7.148	7.955	77909100	427.5E6	52.922	55.176
22)	Mirex	7.333	8.421	55359089	286.7E6	46.710	52.302
23)	Chlordane-1	4.342f	0.000	396712	0	9.348	N.D. #
24)	Chlordane-2	0.000	5.697f	0	606.1E6	N.D.	1585.457 #
25)	Chlordane-3	5.385	6.322	75654489	537.3E6	542.588	399.896 #
26)	Chlordane-4	5.444	6.397	74307195	520.4E6	627.856	334.725 #
27)	Chlordane-5	6.273	0.000	61886974	0	1238.739	N.D. #

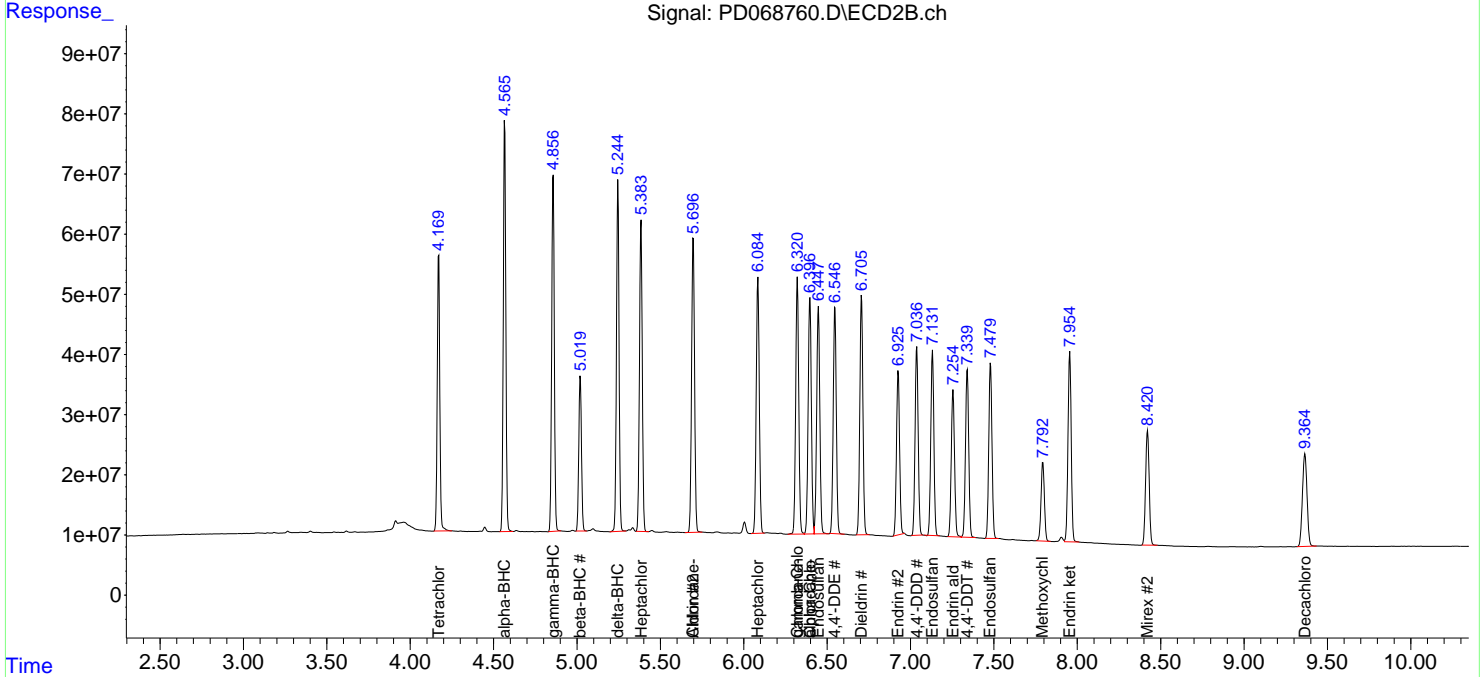
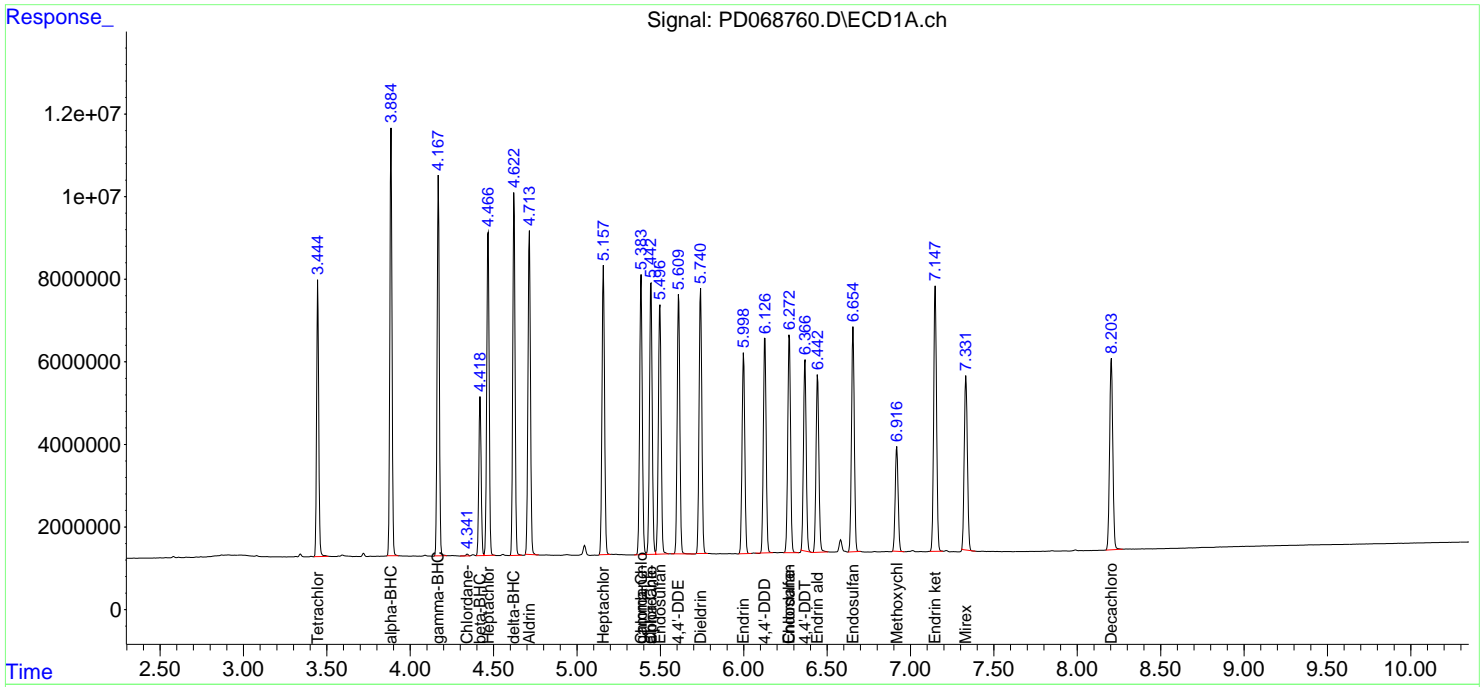
(f)=RT Delta > 1/2 Window (#)=Amounts differ by > 25% (m)=manual int.

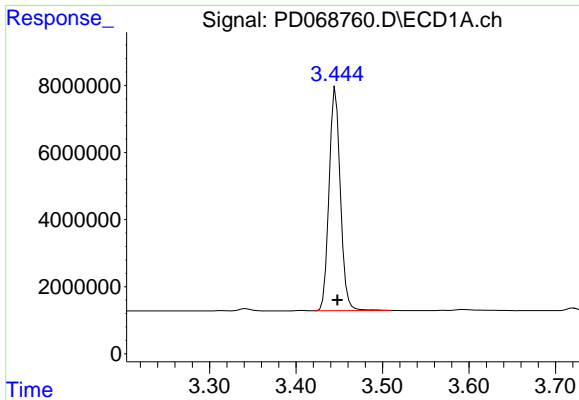
Data Path : Z:\pestpcbsrv\HPCHEM1\ECD_D\Data\PD032522\
 Data File : PD068760.D
 Signal(s) : Signal #1: ECD1A.ch Signal #2: ECD2B.ch
 Acq On : 23 Mar 2022 14:32
 Operator : AR\AJ
 Sample : PSTDCCC050
 Misc :
 ALS Vial : 4 Sample Multiplier: 1

Instrument :
 ECD_D
 ClientSampleId :

Integration File signal 1: autoint1.e
 Integration File signal 2: autoint2.e
 Quant Time: Mar 23 15:44:00 2022
 Quant Method : Z:\pestpcbsrv\HPCHEM1\ECD_D\Method\PD031222.M
 Quant Title : GC Extractables
 QLast Update : Mon Mar 14 03:30:32 2022
 Response via : Initial Calibration
 Integrator: ChemStation

Volume Inj. : 2 µl
 Signal #1 Phase : ZB-MR2 Signal #2 Phase: ZB-MR1
 Signal #1 Info : 30M x 0.32mm x0.2 Signal #2 Info : 30M x 0.32mm x 0.50µm

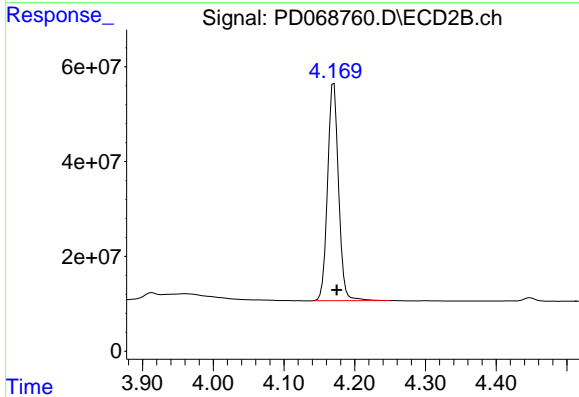




#1 Tetrachloro-m-xylene

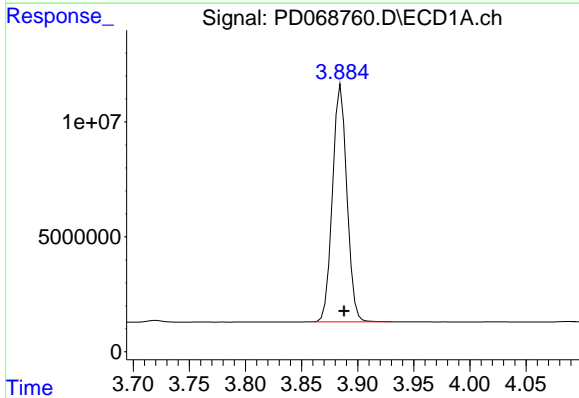
R.T.: 3.446 min
 Delta R.T.: -0.002 min
 Response: 60380668
 Conc: 49.73 ng/ml

Instrument :
 ECD_D
 ClientSampleId :



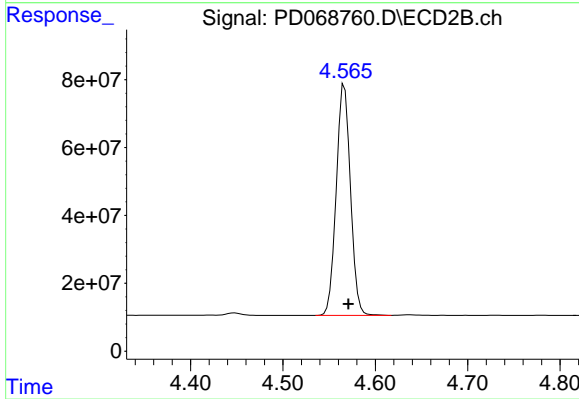
#1 Tetrachloro-m-xylene

R.T.: 4.171 min
 Delta R.T.: -0.004 min
 Response: 494667381
 Conc: 51.74 ng/ml



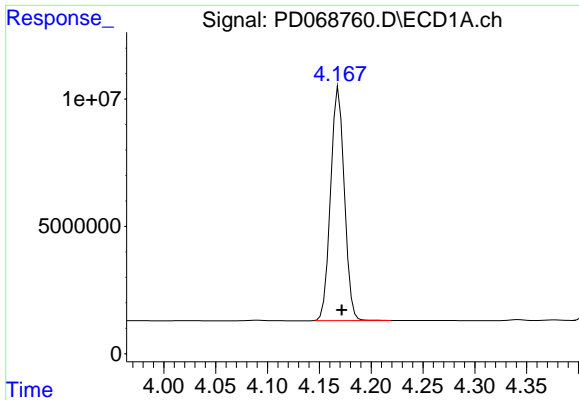
#2 alpha-BHC

R.T.: 3.885 min
 Delta R.T.: -0.002 min
 Response: 92290507
 Conc: 50.97 ng/ml



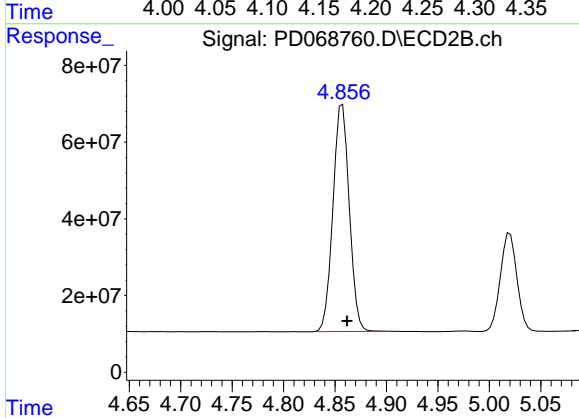
#2 alpha-BHC

R.T.: 4.567 min
 Delta R.T.: -0.004 min
 Response: 727717851
 Conc: 52.88 ng/ml

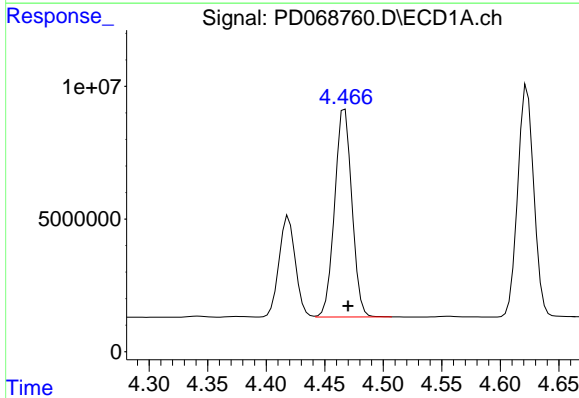


#3 gamma-BHC (Lindane)
R.T.: 4.169 min
Delta R.T.: -0.003 min
Response: 84626933
Conc: 50.68 ng/ml

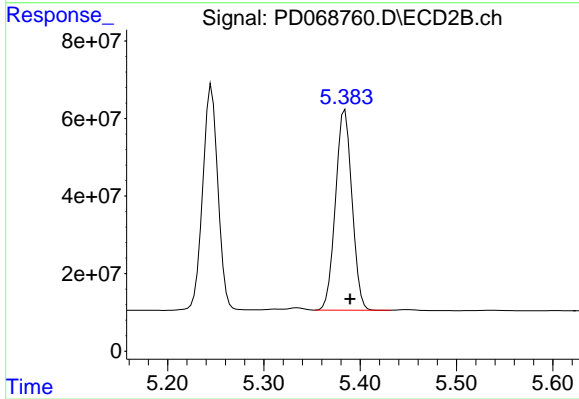
Instrument :
ECD_D
ClientSampleId :



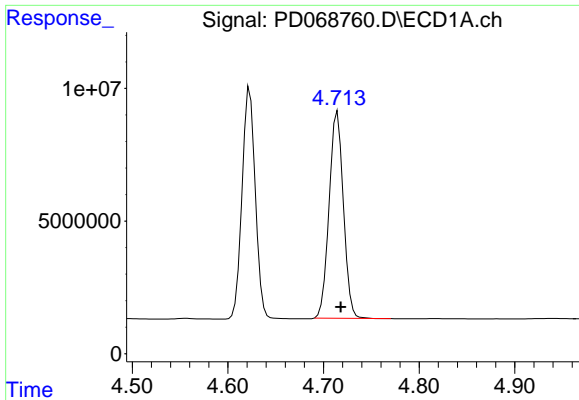
#3 gamma-BHC (Lindane)
R.T.: 4.857 min
Delta R.T.: -0.004 min
Response: 653922082
Conc: 52.30 ng/ml



#4 Heptachlor
R.T.: 4.467 min
Delta R.T.: -0.003 min
Response: 80360339
Conc: 48.78 ng/ml

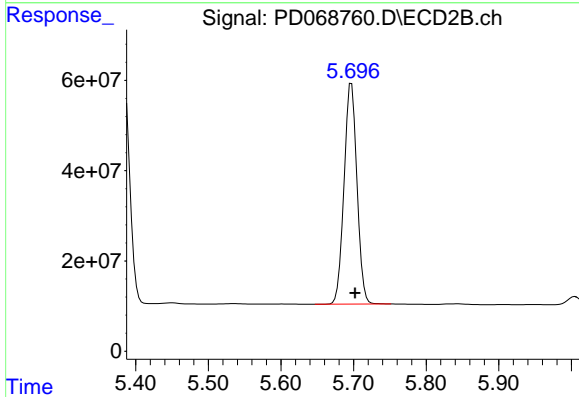


#4 Heptachlor
R.T.: 5.384 min
Delta R.T.: -0.005 min
Response: 613520083
Conc: 51.62 ng/ml

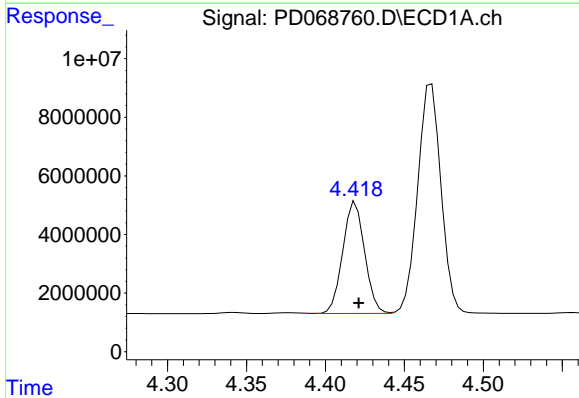


#5 Aldrin
 R.T.: 4.715 min
 Delta R.T.: -0.003 min
 Response: 80655225
 Conc: 50.47 ng/ml

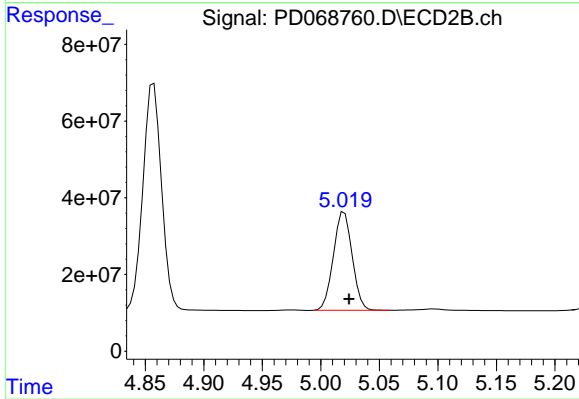
Instrument :
 ECD_D
 ClientSampleId :



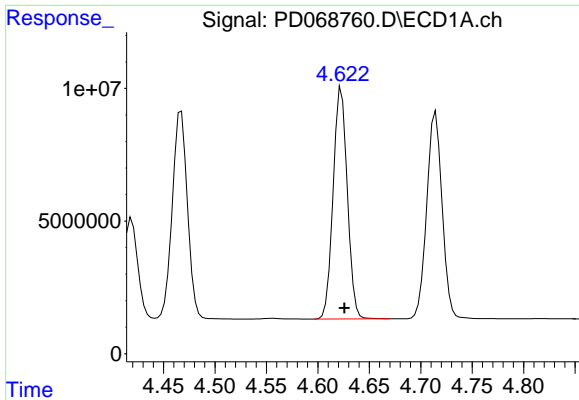
#5 Aldrin
 R.T.: 5.697 min
 Delta R.T.: -0.005 min
 Response: 606101358
 Conc: 52.80 ng/ml



#6 beta-BHC
 R.T.: 4.419 min
 Delta R.T.: -0.002 min
 Response: 36785297
 Conc: 49.41 ng/ml



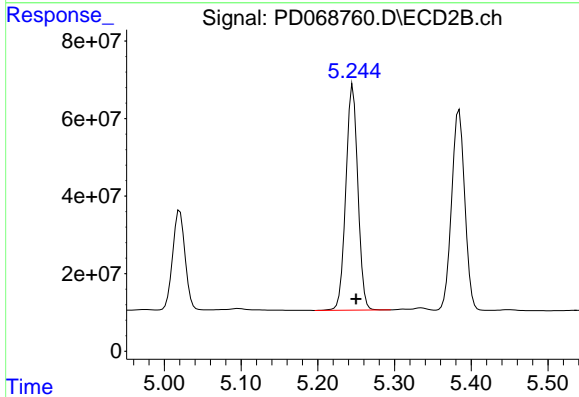
#6 beta-BHC
 R.T.: 5.020 min
 Delta R.T.: -0.004 min
 Response: 286409775
 Conc: 52.17 ng/ml



#7 delta-BHC

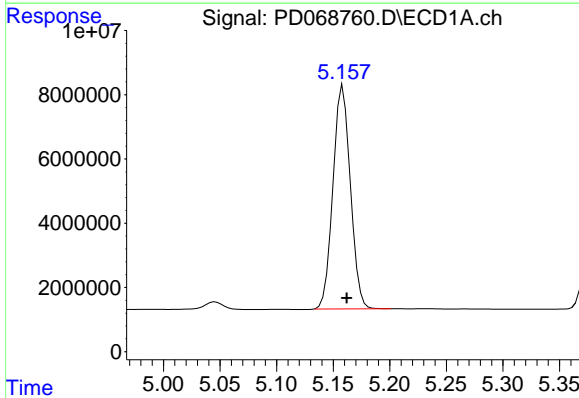
R.T.: 4.623 min
 Delta R.T.: -0.003 min
 Response: 83653960
 Conc: 51.19 ng/ml

Instrument :
 ECD_D
 ClientSampleId :



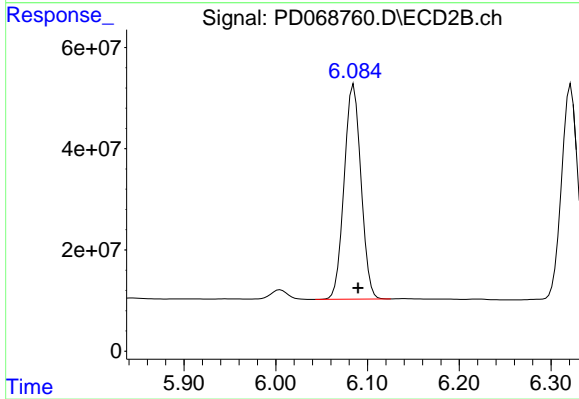
#7 delta-BHC

R.T.: 5.246 min
 Delta R.T.: -0.004 min
 Response: 634758960
 Conc: 52.78 ng/ml



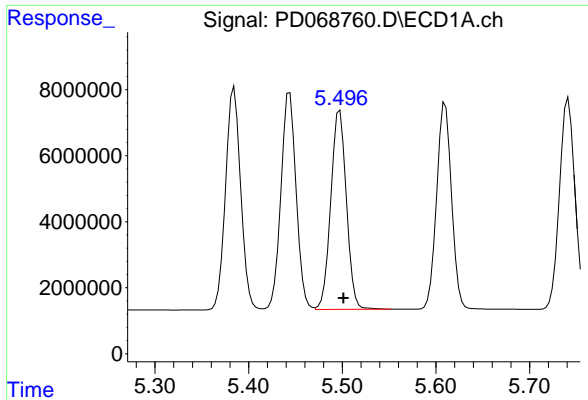
#8 Heptachlor epoxide

R.T.: 5.159 min
 Delta R.T.: -0.003 min
 Response: 74482280
 Conc: 49.80 ng/ml



#8 Heptachlor epoxide

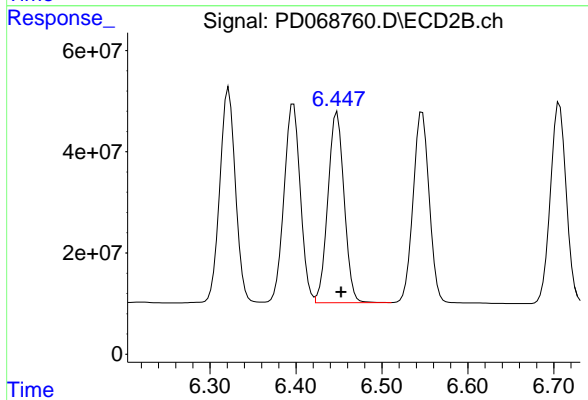
R.T.: 6.085 min
 Delta R.T.: -0.005 min
 Response: 539927337
 Conc: 51.70 ng/ml



#9 Endosulfan I

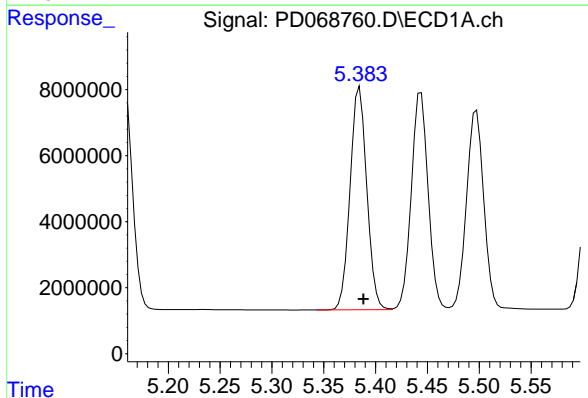
R.T.: 5.497 min
 Delta R.T.: -0.004 min
 Response: 69870325
 Conc: 49.93 ng/ml

Instrument :
 ECD_D
 ClientSampleId :



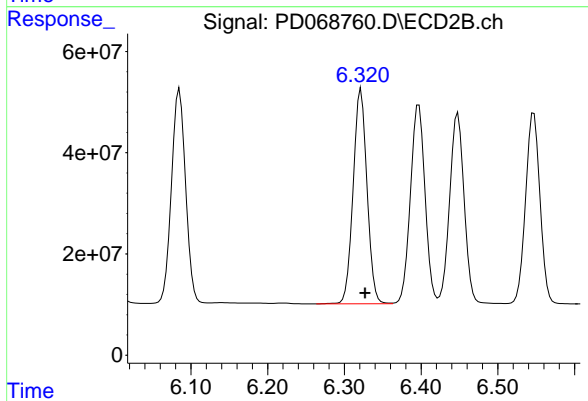
#9 Endosulfan I

R.T.: 6.448 min
 Delta R.T.: -0.005 min
 Response: 491984840
 Conc: 52.46 ng/ml



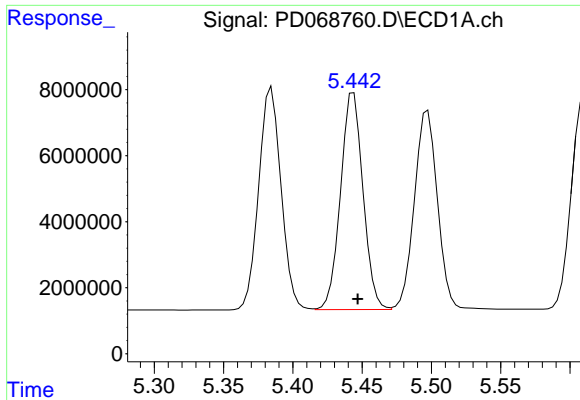
#10 gamma-Chlordane

R.T.: 5.385 min
 Delta R.T.: -0.004 min
 Response: 75654489
 Conc: 49.87 ng/ml



#10 gamma-Chlordane

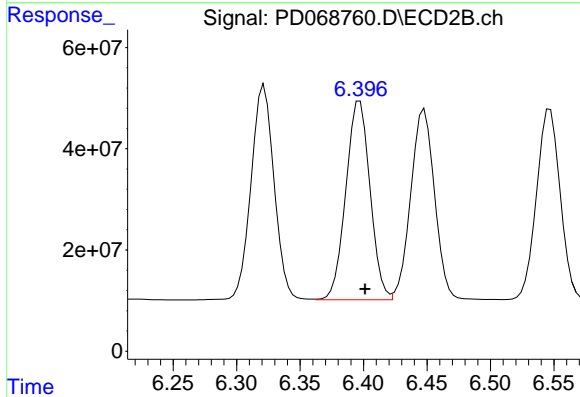
R.T.: 6.322 min
 Delta R.T.: -0.005 min
 Response: 537293039
 Conc: 52.13 ng/ml



#11 alpha-Chlordane

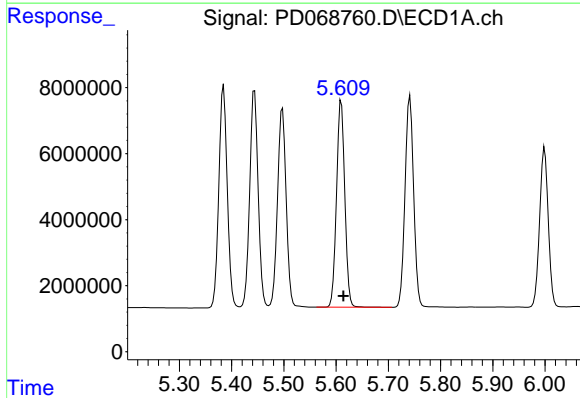
R.T.: 5.444 min
Delta R.T.: -0.003 min
Response: 74307195
Conc: 49.72 ng/ml

Instrument :
ECD_D
ClientSampleId :



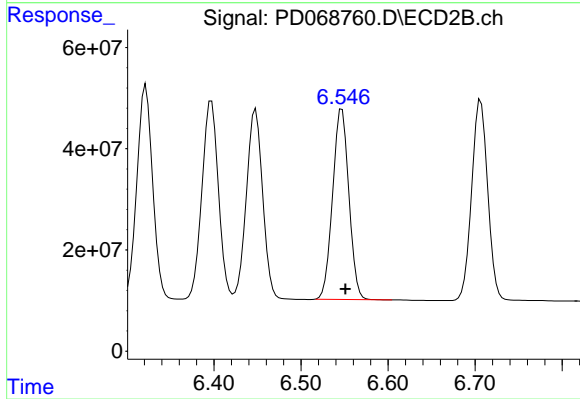
#11 alpha-Chlordane

R.T.: 6.397 min
Delta R.T.: -0.004 min
Response: 520359379
Conc: 52.26 ng/ml



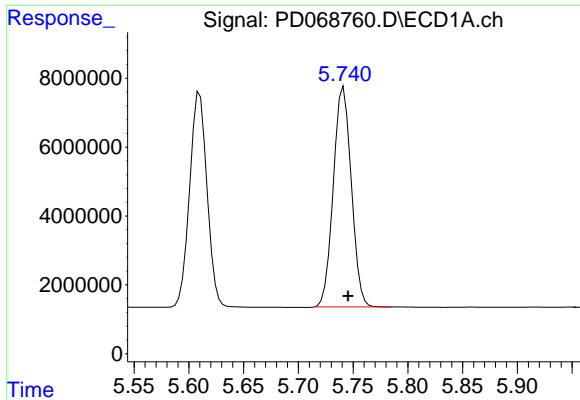
#12 4,4'-DDE

R.T.: 5.610 min
Delta R.T.: -0.004 min
Response: 69262242
Conc: 50.63 ng/ml



#12 4,4'-DDE

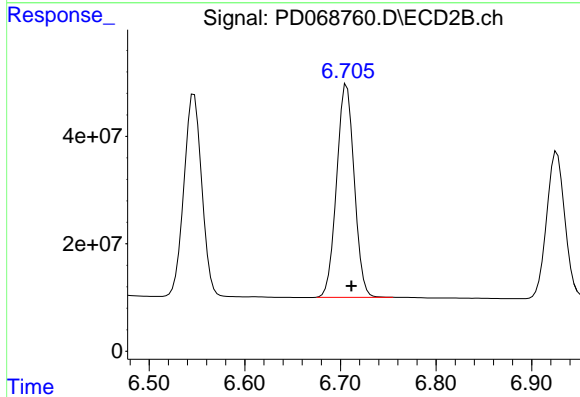
R.T.: 6.547 min
Delta R.T.: -0.004 min
Response: 488518474
Conc: 52.72 ng/ml



#13 Dieldrin

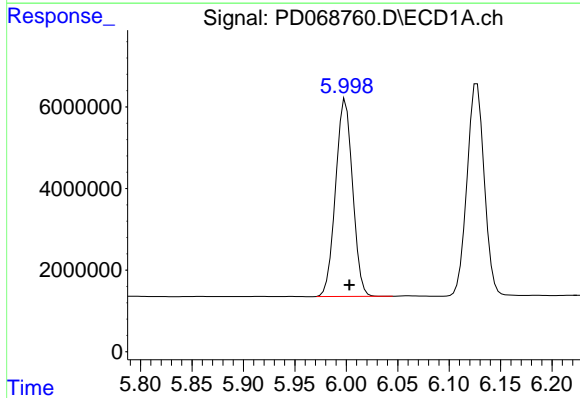
R.T.: 5.741 min
 Delta R.T.: -0.004 min
 Response: 73060929
 Conc: 50.04 ng/ml

Instrument :
 ECD_D
 ClientSampleId :



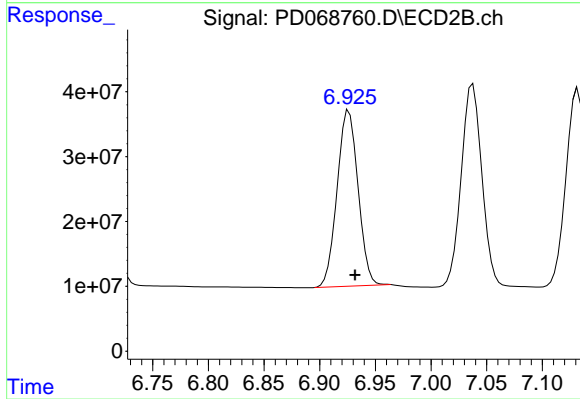
#13 Dieldrin

R.T.: 6.707 min
 Delta R.T.: -0.005 min
 Response: 507573799
 Conc: 52.26 ng/ml



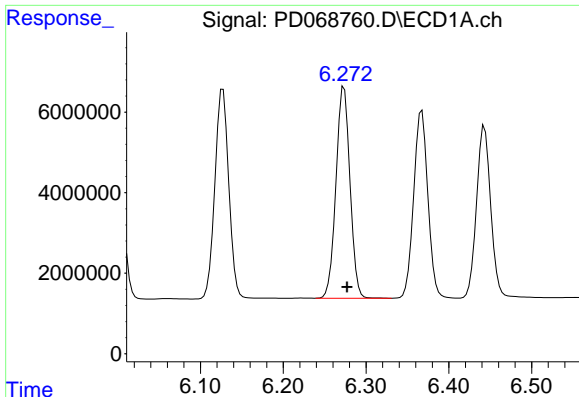
#14 Endrin

R.T.: 5.999 min
 Delta R.T.: -0.004 min
 Response: 55567592
 Conc: 42.18 ng/ml



#14 Endrin

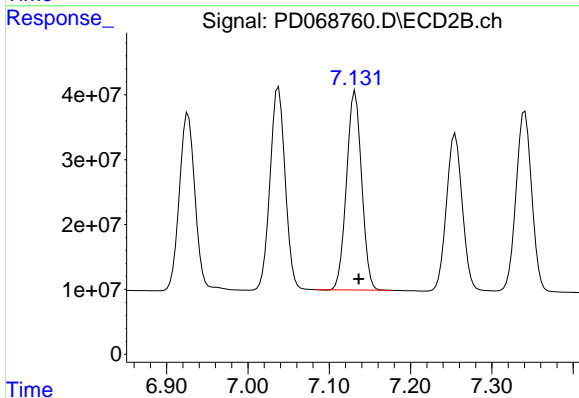
R.T.: 6.926 min
 Delta R.T.: -0.005 min
 Response: 356384356
 Conc: 46.06 ng/ml



#15 Endosulfan II

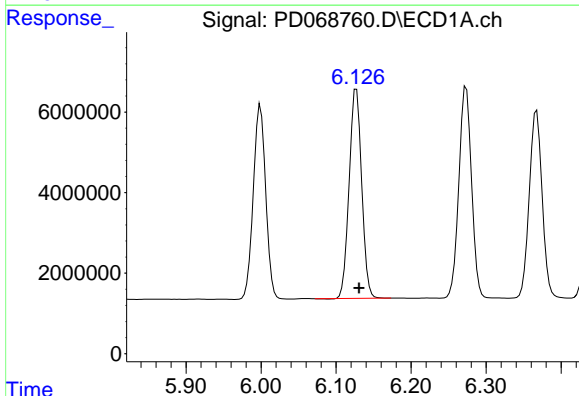
R.T.: 6.273 min
 Delta R.T.: -0.004 min
 Response: 61886974
 Conc: 49.65 ng/ml

Instrument :
 ECD_D
 ClientSampleId :



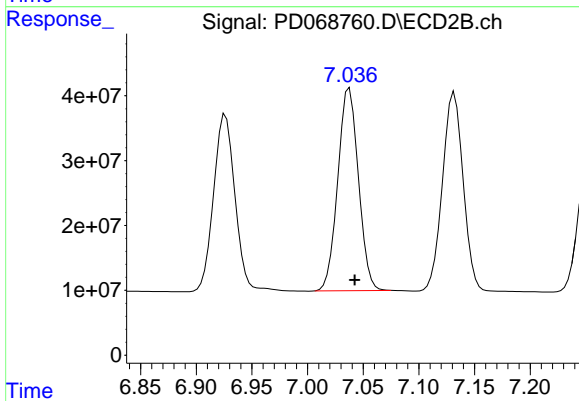
#15 Endosulfan II

R.T.: 7.132 min
 Delta R.T.: -0.004 min
 Response: 395193309
 Conc: 52.28 ng/ml



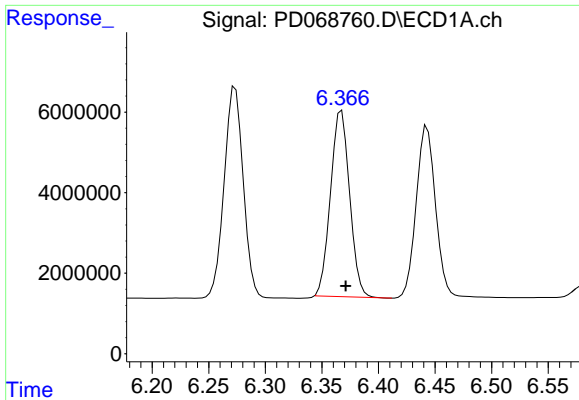
#16 4,4'-DDD

R.T.: 6.127 min
 Delta R.T.: -0.004 min
 Response: 60413259
 Conc: 51.23 ng/ml



#16 4,4'-DDD

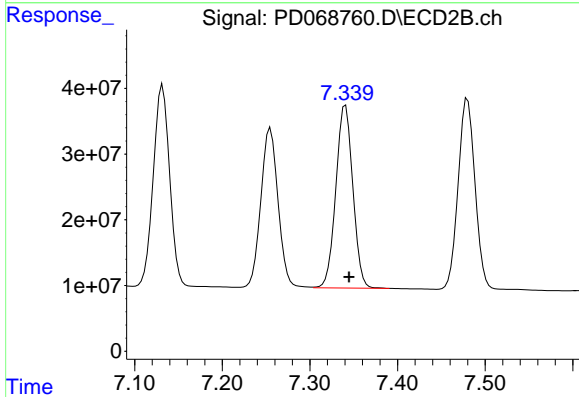
R.T.: 7.038 min
 Delta R.T.: -0.005 min
 Response: 403665483
 Conc: 54.66 ng/ml



#17 4,4'-DDT

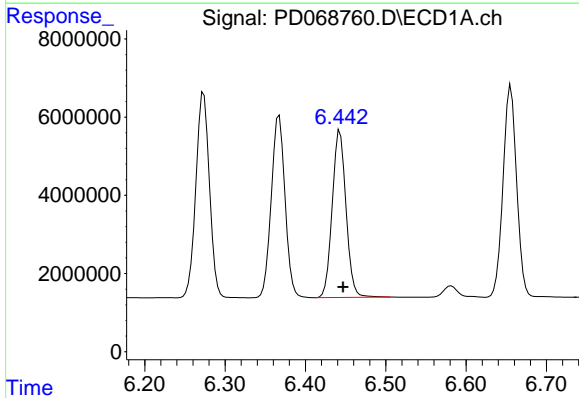
R.T.: 6.367 min
 Delta R.T.: -0.004 min
 Response: 54345099
 Conc: 45.21 ng/ml

Instrument :
 ECD_D
 ClientSampleId :



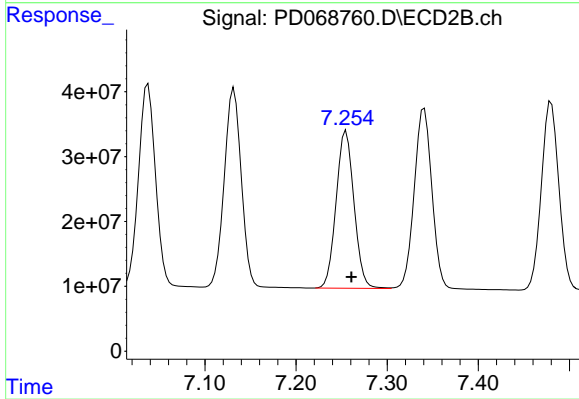
#17 4,4'-DDT

R.T.: 7.341 min
 Delta R.T.: -0.004 min
 Response: 375108110
 Conc: 51.06 ng/ml



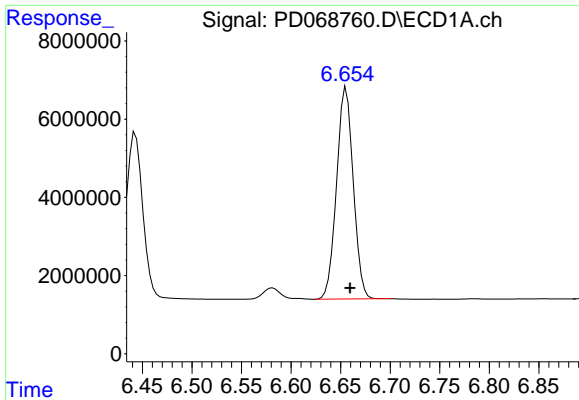
#18 Endrin aldehyde

R.T.: 6.443 min
 Delta R.T.: -0.004 min
 Response: 50966305
 Conc: 51.34 ng/ml



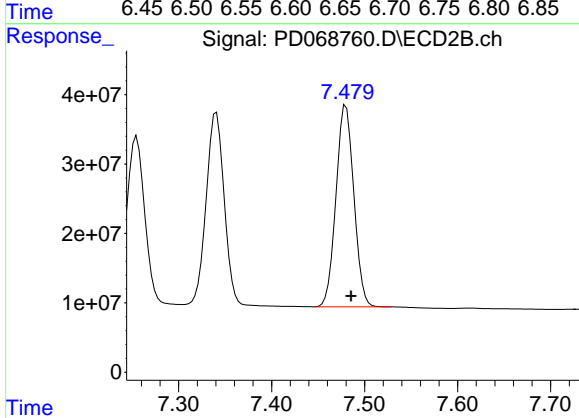
#18 Endrin aldehyde

R.T.: 7.255 min
 Delta R.T.: -0.006 min
 Response: 330933931
 Conc: 54.68 ng/ml

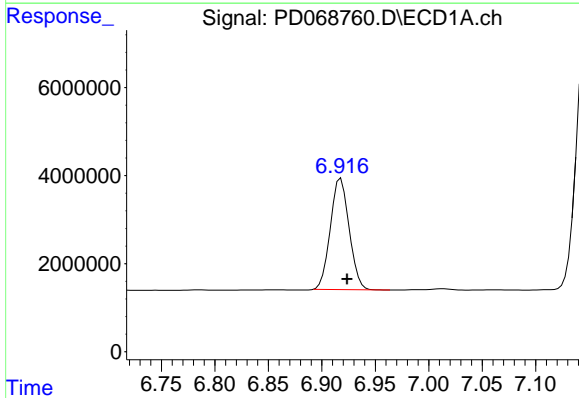


#19 Endosulfan Sulfate
 R.T.: 6.656 min
 Delta R.T.: -0.004 min
 Response: 63383131
 Conc: 49.56 ng/ml

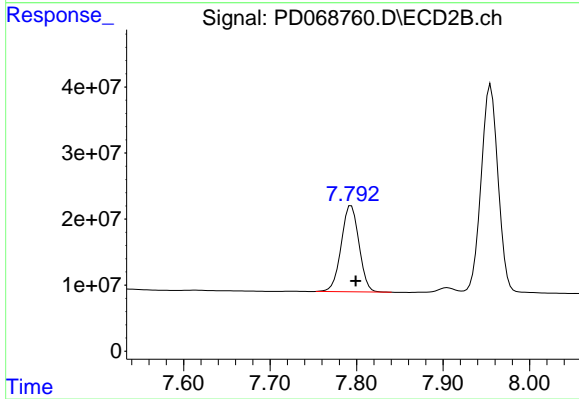
Instrument :
 ECD_D
 ClientSampleId :



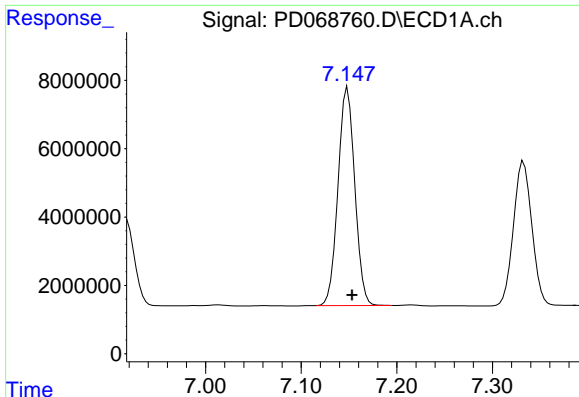
#19 Endosulfan Sulfate
 R.T.: 7.480 min
 Delta R.T.: -0.006 min
 Response: 388265878
 Conc: 52.79 ng/ml



#20 Methoxychlor
 R.T.: 6.918 min
 Delta R.T.: -0.006 min
 Response: 30904487
 Conc: 44.59 ng/ml



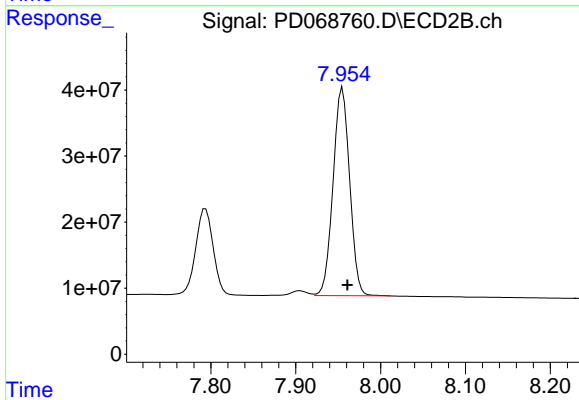
#20 Methoxychlor
 R.T.: 7.794 min
 Delta R.T.: -0.005 min
 Response: 185600034
 Conc: 50.92 ng/ml



#21 Endrin ketone

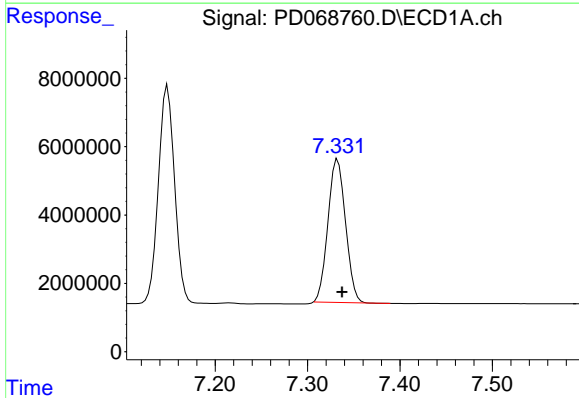
R.T.: 7.148 min
 Delta R.T.: -0.004 min
 Response: 77909100
 Conc: 52.92 ng/ml

Instrument :
 ECD_D
 ClientSampleId :



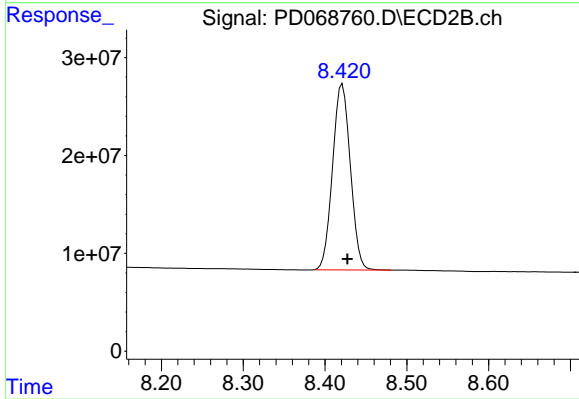
#21 Endrin ketone

R.T.: 7.955 min
 Delta R.T.: -0.005 min
 Response: 427542606
 Conc: 55.18 ng/ml



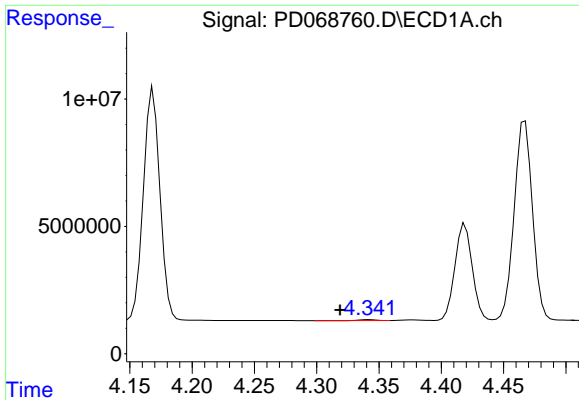
#22 Mirex

R.T.: 7.333 min
 Delta R.T.: -0.005 min
 Response: 55359089
 Conc: 46.71 ng/ml



#22 Mirex

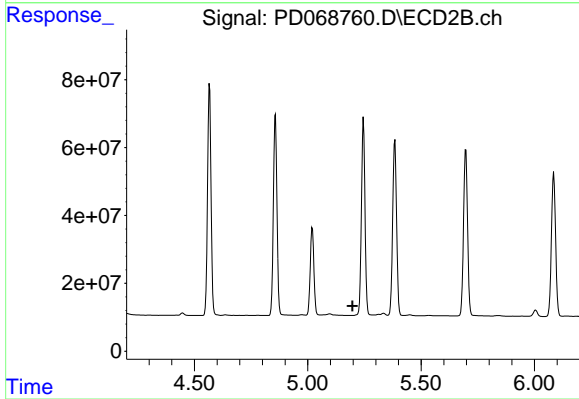
R.T.: 8.421 min
 Delta R.T.: -0.006 min
 Response: 286687115
 Conc: 52.30 ng/ml



#23 Chlordane-1

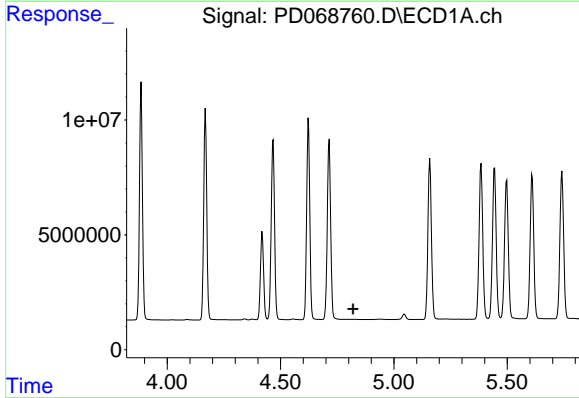
R.T.: 4.342 min
 Delta R.T.: 0.023 min
 Response: 396712
 Conc: 9.35 ng/ml

Instrument :
 ECD_D
 ClientSampleId :



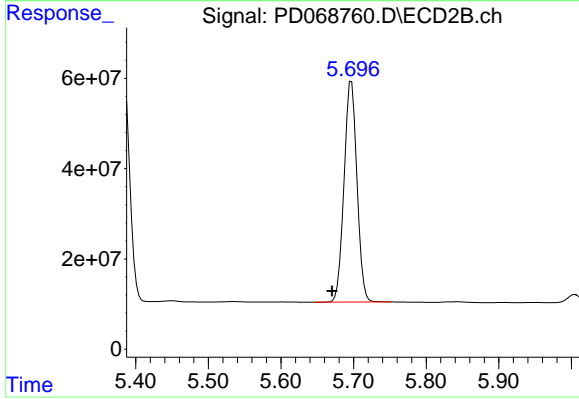
#23 Chlordane-1

R.T.: 0.000 min
 Exp R.T. : 5.198 min
 Response: 0
 Conc: N.D.



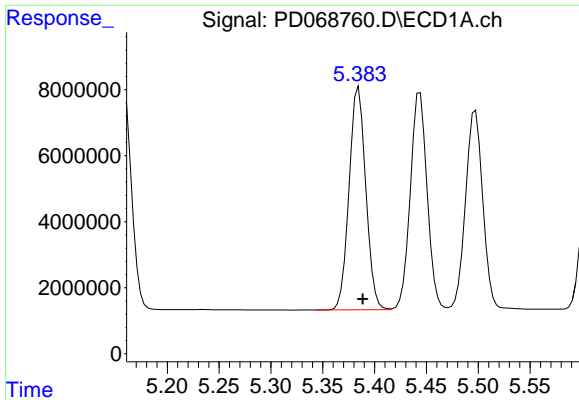
#24 Chlordane-2

R.T.: 0.000 min
 Exp R.T. : 4.820 min
 Response: 0
 Conc: N.D.



#24 Chlordane-2

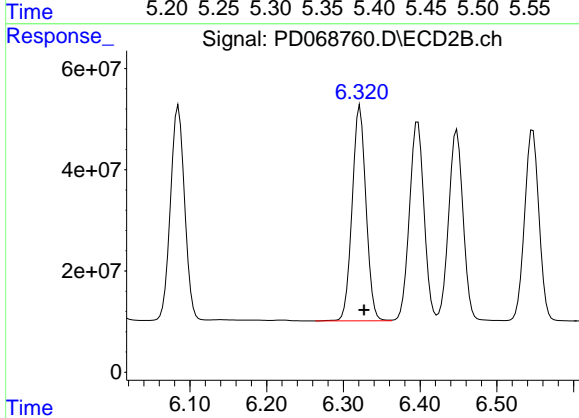
R.T.: 5.697 min
 Delta R.T.: 0.026 min
 Response: 606101358
 Conc: 1585.46 ng/ml



#25 Chlordane-3

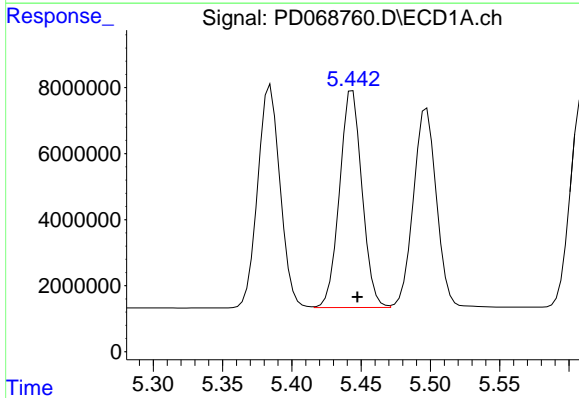
R.T.: 5.385 min
Delta R.T.: -0.004 min
Response: 75654489
Conc: 542.59 ng/ml

Instrument :
ECD_D
ClientSampleId :



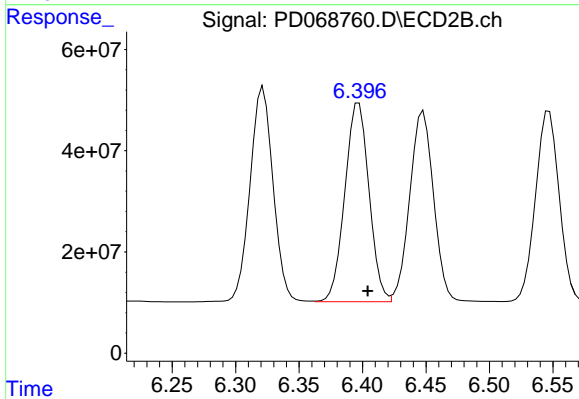
#25 Chlordane-3

R.T.: 6.322 min
Delta R.T.: -0.005 min
Response: 537293039
Conc: 399.90 ng/ml



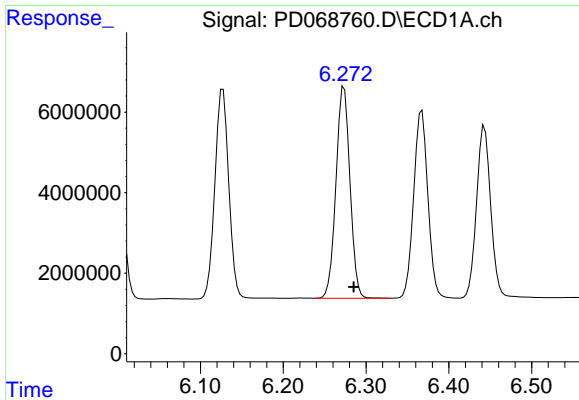
#26 Chlordane-4

R.T.: 5.444 min
Delta R.T.: -0.004 min
Response: 74307195
Conc: 627.86 ng/ml



#26 Chlordane-4

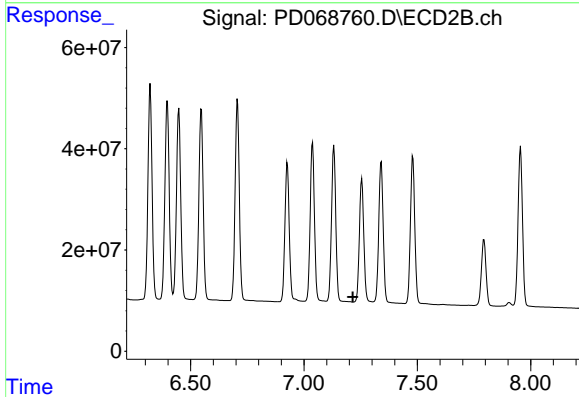
R.T.: 6.397 min
Delta R.T.: -0.007 min
Response: 520359379
Conc: 334.73 ng/ml



#27 Chlordane-5

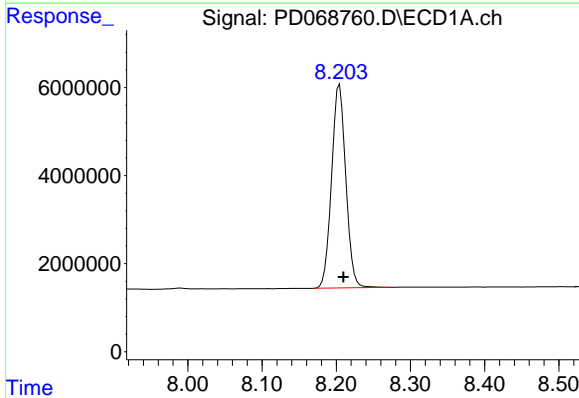
R.T.: 6.273 min
 Delta R.T.: -0.012 min
 Response: 61886974
 Conc: 1238.74 ng/m

Instrument :
 ECD_D
 ClientSampleId :



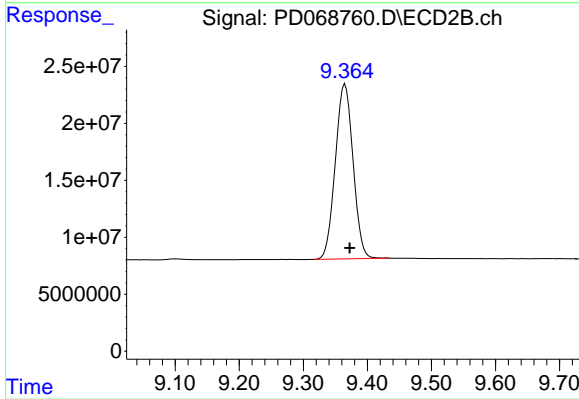
#27 Chlordane-5

R.T.: 0.000 min
 Exp R.T. : 7.215 min
 Response: 0
 Conc: N.D.



#28 Decachlorobiphenyl

R.T.: 8.204 min
 Delta R.T.: -0.005 min
 Response: 61604778
 Conc: 48.76 ng/ml



#28 Decachlorobiphenyl

R.T.: 9.365 min
 Delta R.T.: -0.007 min
 Response: 295498432
 Conc: 52.15 ng/ml