

Data Path : Z:\pestpcbsrv\HPCHEM1\ECD_D\Data\PD032619\
 Data File : PD052155.D
 Signal(s) : Signal #1: ECD1A.CH Signal #2: ECD2B.CH
 Acq On : 26 Mar 2019 11:35
 Operator : AJ\SJ
 Sample : K2031-09MSRE
 Misc :
 ALS Vial : 36 Sample Multiplier: 1

Instrument :
 ECD_D
 ClientSampleId :
 BF5R8MSRE

Integration File signal 1: autoint1.e
 Integration File signal 2: autoint2.e
 Quant Time: Mar 27 08:03:41 2019
 Quant Method : Z:\pestpcbsrv\HPCHEM1\ECD_D\Method\PD032519CLP.M
 Quant Title : GC Extractables
 QLast Update : Mon Mar 25 18:59:03 2019
 Response via : Initial Calibration
 Integrator: ChemStation 6890 Scale Mode: Large solvent peaks clipped

Volume Inj. : 1 µl
 Signal #1 Phase : ZB-MR2 Signal #2 Phase: ZB-MR1
 Signal #1 Info : 30M x 0.32mm x0.2 Signal #2 Info : 30M x 0.32mm x 0.50µm

Compound	RT#1	RT#2	Resp#1	Resp#2	ng/ml	ng/ml

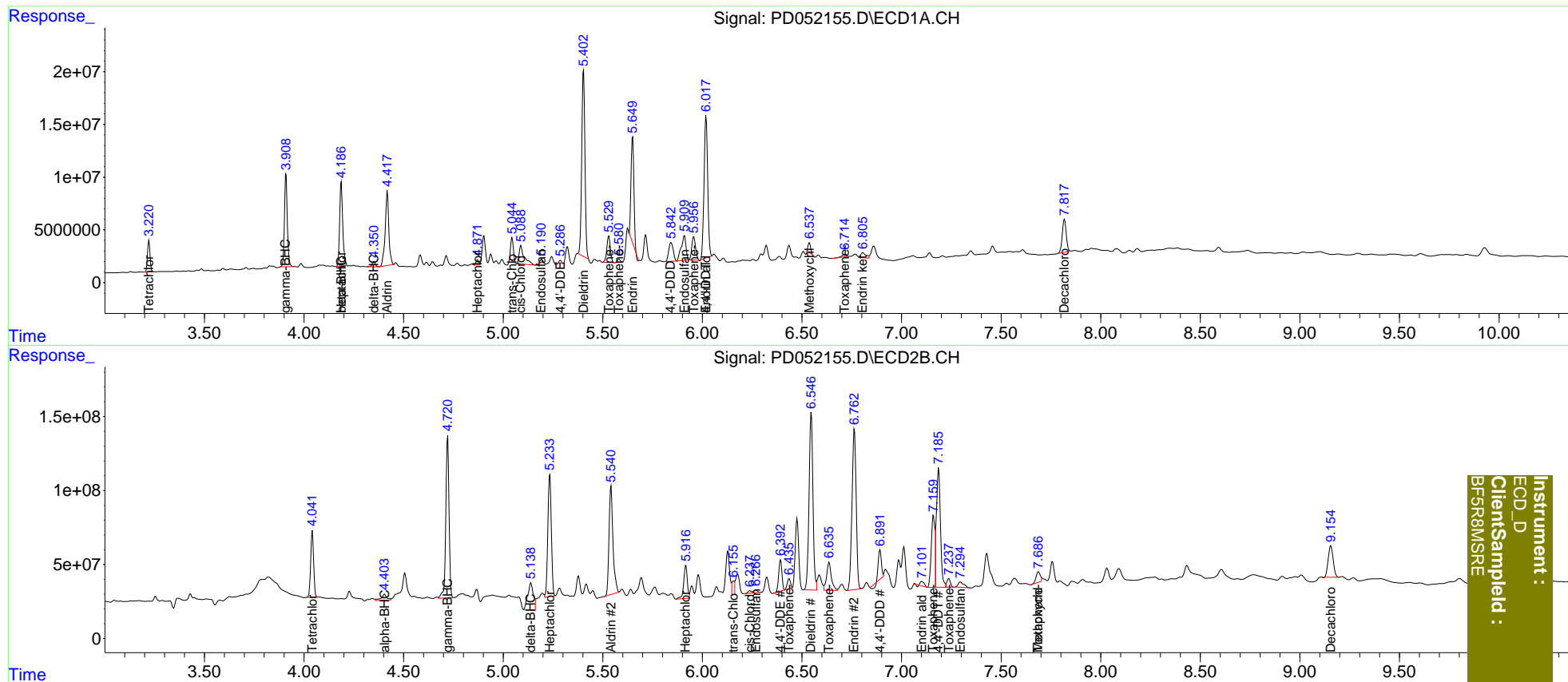
System Monitoring Compounds						
1) SA Tetrachlo...	3.222	4.042	25909022	459.8E6	18.253	15.802
27) SA Decachlor...	7.818	9.156	43545815	367.3E6	27.809	23.795
Target Compounds						
2) A alpha-BHC	0.000	4.404f	0	77669038	N.D.	1.776
3) MA gamma-BHC...	3.910	4.722	88789464	1227.0E6	39.623	30.884
4) MA Heptachlor	4.187	5.235	86325879	995.8E6	39.261	24.827 #
5) MB Aldrin	4.419	5.542	89105058	1003.9E6	42.774	26.965 #
6) B beta-BHC	4.187f	0.000	86325879	0	90.203	N.D. #
7) B delta-BHC	4.351	5.139f	5289176	349.1E6	2.407	8.799 #
8) B Heptachlo...	4.872	5.917	4680836	280.0E6	2.318	8.218 #
9) A Endosulfan I	5.193	6.268	1876785	25502598	0.965	0.813
10) B trans-Chl...	5.045	6.157	20311047	78408198	9.857	2.309 #
11) B cis-Chlor...	5.089	6.239	30672329	20064328	15.214	0.618 #
12) B 4,4'-DDE	5.288	6.393	1215008	234.7E6	0.602	7.670 #
13) MA Dieldrin	5.404	6.547	197.6E6	1623.0E6	91.054	52.073 #
14) MA Endrin	5.650	6.764	101.3E6	1576.1E6	56.822	68.469
15) B Endosulfa...	5.910	6.987	38516731	-77064077	20.130	N.D. #
16) A 4,4'-DDD	5.843f	6.892	27970674	178.3E6	16.673	7.489 #
17) MA 4,4'-DDT	6.019	7.187	169.1E6	1159.1E6	103.020	60.027 #
18) B Endrin al...	6.019f	7.102	169.1E6	37861717	110.278	1.849 #
19) B Endosulfa...	6.296	7.295	-2368432	73134591	N.D.	3.254
20) A Methoxychlor	6.537	7.688f	8073694	102.3E6	8.504	10.998 #
21) B Endrin ke...	6.806f	0.000	8807430	0	4.439	N.D. #
22) Toxaphene-1	5.530	6.436	31063463	78213645	2428.831	583.487 #
23) Toxaphene-2	5.581	6.637	3128569	314.5E6	142.684	1258.990 #
24) Toxaphene-3	5.957	7.161	28900322	590.4E6	817.958	2920.117 #
25) Toxaphene-4	0.000	7.238	0	73164844	N.D.	131.450
26) Toxaphene-5	6.716	7.688	4134951	102.3E6	95.485	434.966 #

(f)=RT Delta > 1/2 Window (#)=Amounts differ by > 25% (m)=manual int.

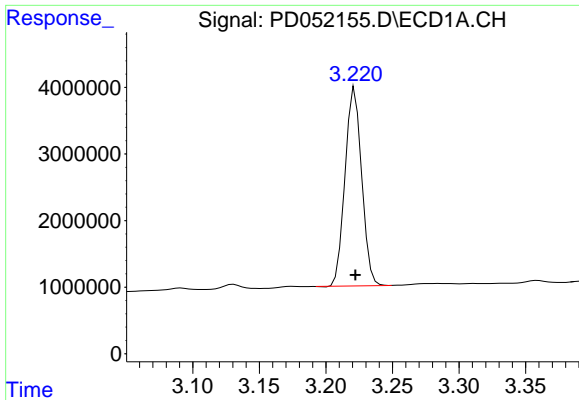
Data Path : Z:\pestpcbsrv\HPCHEM1\ECD_D\Data\PD032619\
 Data File : PD052155.D
 Signal(s) : Signal #1: ECD1A.CH Signal #2: ECD2B.CH
 Acq On : 26 Mar 2019 11:35
 Operator : AJ\SJ
 Sample : K2031-09MSRE
 Misc :
 ALS Vial : 36 Sample Multiplier: 1

Integration File signal 1: autoint1.e
 Integration File signal 2: autoint2.e
 Quant Time: Mar 27 08:03:41 2019
 Quant Method : Z:\pestpcbsrv\HPCHEM1\ECD_D\Method\PD032519CLP.M
 Quant Title : GC Extractables
 QLast Update : Mon Mar 25 18:59:03 2019
 Response via : Initial Calibration
 Integrator: ChemStation 6890 Scale Mode: Large solvent peaks clipped

Volume Inj. : 1 µl
 Signal #1 Phase : ZB-MR2 Signal #2 Phase: ZB-MR1
 Signal #1 Info : 30M x 0.32mm x0.2 Signal #2 Info : 30M x 0.32mm x 0.50µm



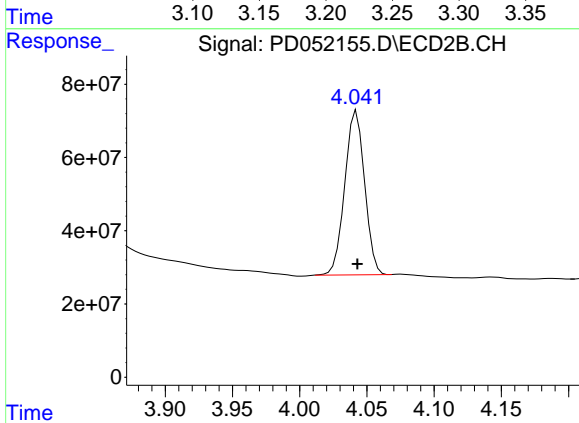
Instrument :
 ECD_D
 Client: Sampled :
 BF5RMSRE



#1 Tetrachloro-m-xylene

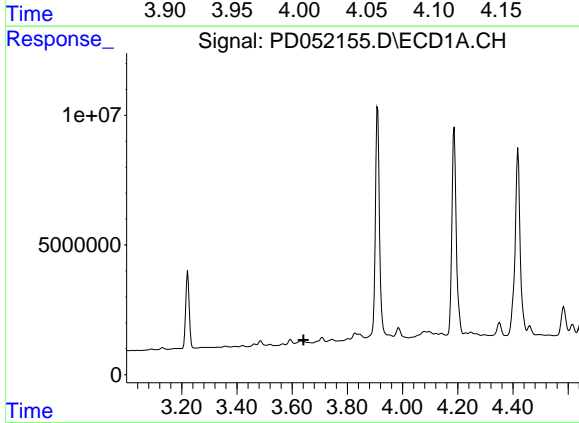
R.T.: 3.222 min
 Delta R.T.: 0.000 min
 Response: 25909022
 Conc: 18.25 ng/ml

Instrument :
 ECD_D
 ClientSampled :
 BF5R8MSRE



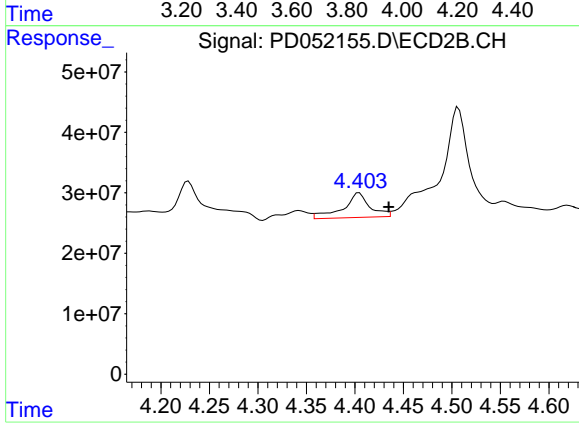
#1 Tetrachloro-m-xylene

R.T.: 4.042 min
 Delta R.T.: 0.000 min
 Response: 459783539
 Conc: 15.80 ng/ml



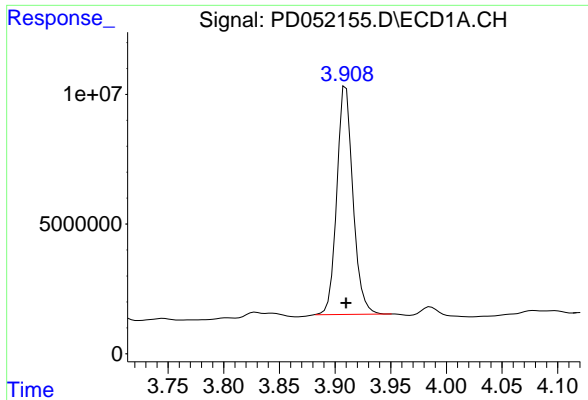
#2 alpha-BHC

R.T.: 0.000 min
 Exp R.T. : 3.641 min
 Response: 0
 Conc: N.D.



#2 alpha-BHC

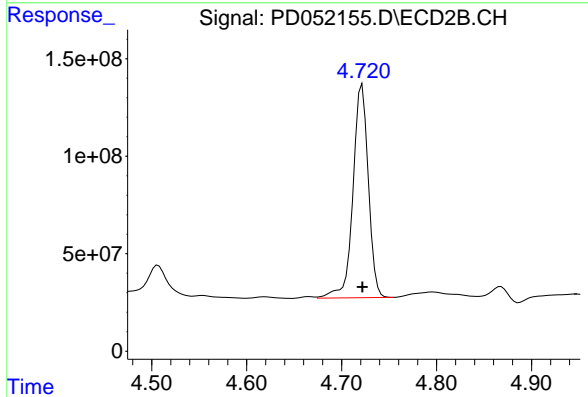
R.T.: 4.404 min
 Delta R.T.: -0.031 min
 Response: 77669038
 Conc: 1.78 ng/ml



#3 gamma-BHC (Lindane)

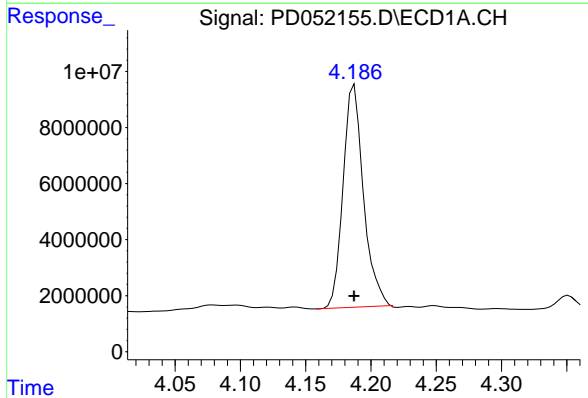
R.T.: 3.910 min
Delta R.T.: 0.000 min
Response: 88789464
Conc: 39.62 ng/ml

Instrument :
ECD_D
ClientSampleId :
BF5R8MSRE



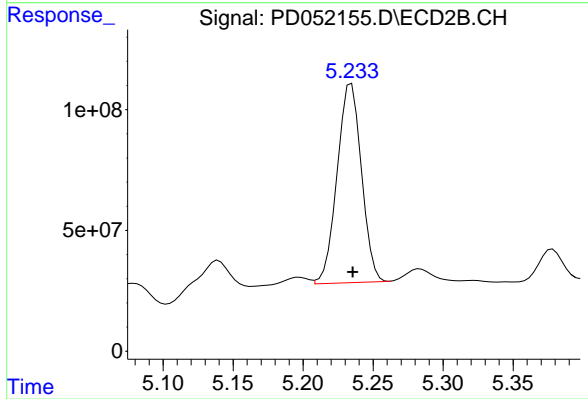
#3 gamma-BHC (Lindane)

R.T.: 4.722 min
Delta R.T.: 0.000 min
Response: 1226995377
Conc: 30.88 ng/ml



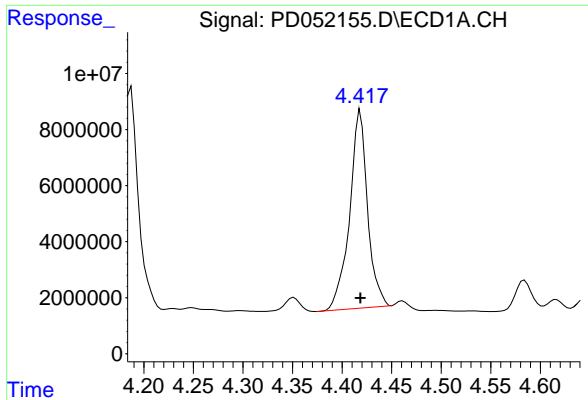
#4 Heptachlor

R.T.: 4.187 min
Delta R.T.: 0.000 min
Response: 86325879
Conc: 39.26 ng/ml



#4 Heptachlor

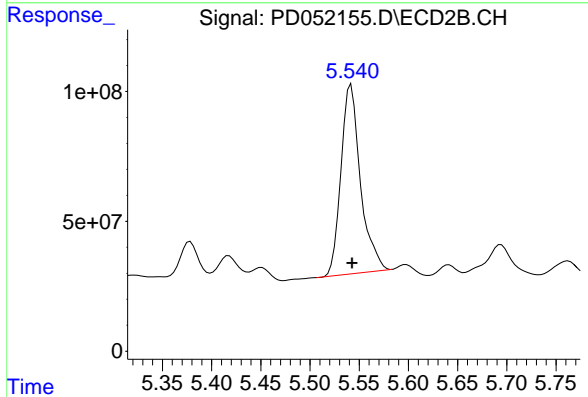
R.T.: 5.235 min
Delta R.T.: 0.000 min
Response: 995804418
Conc: 24.83 ng/ml



#5 Aldrin

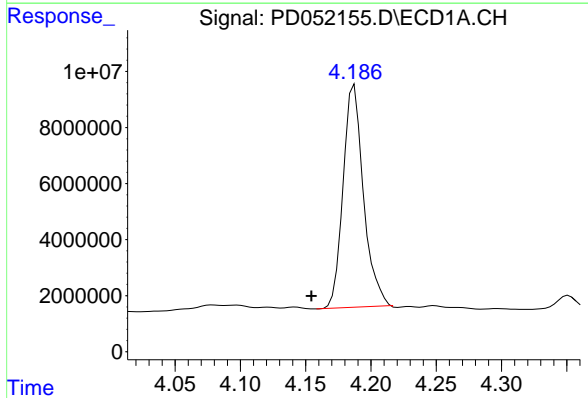
R.T.: 4.419 min
 Delta R.T.: 0.000 min
 Response: 89105058
 Conc: 42.77 ng/ml

Instrument :
 ECD_D
 ClientSampleId :
 BF5R8MSRE



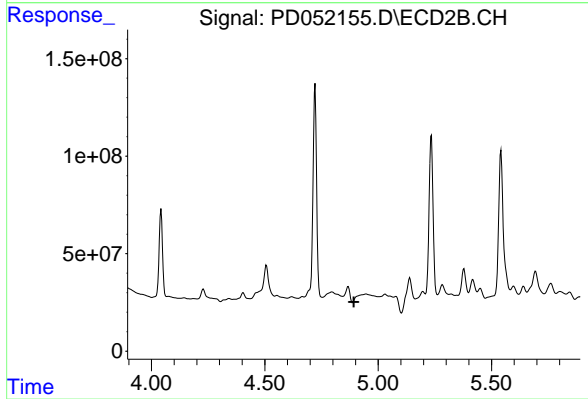
#5 Aldrin

R.T.: 5.542 min
 Delta R.T.: 0.000 min
 Response: 1003936980
 Conc: 26.97 ng/ml



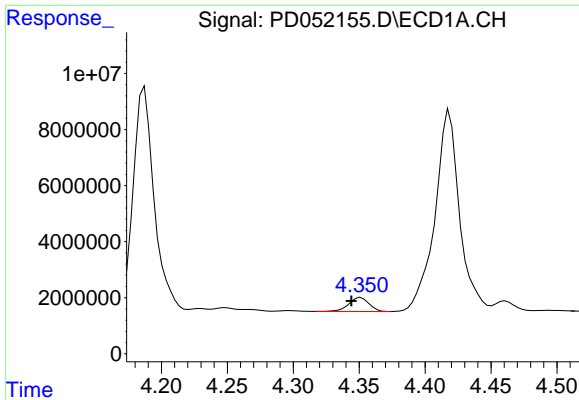
#6 beta-BHC

R.T.: 4.187 min
 Delta R.T.: 0.033 min
 Response: 86325879
 Conc: 90.20 ng/ml



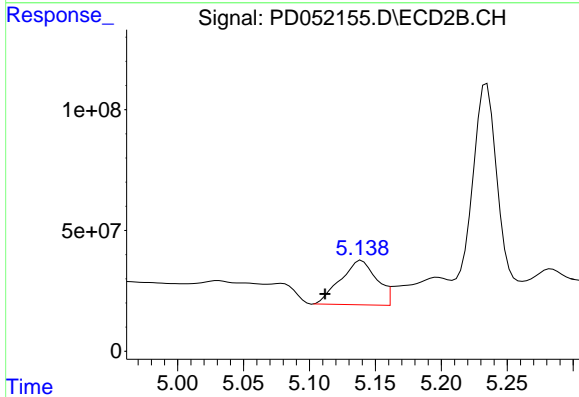
#6 beta-BHC

R.T.: 0.000 min
 Exp R.T. : 4.893 min
 Response: 0
 Conc: N.D.

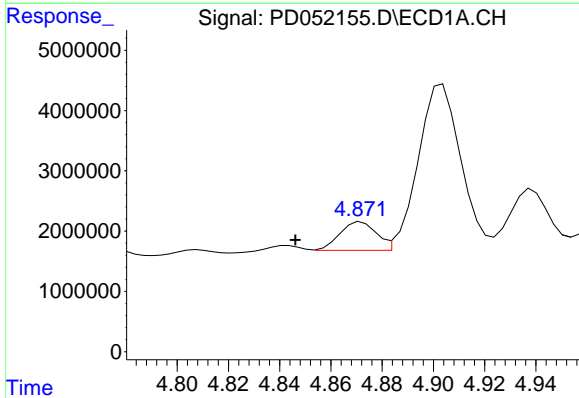


#7 delta-BHC
 R.T.: 4.351 min
 Delta R.T.: 0.007 min
 Response: 5289176
 Conc: 2.41 ng/ml

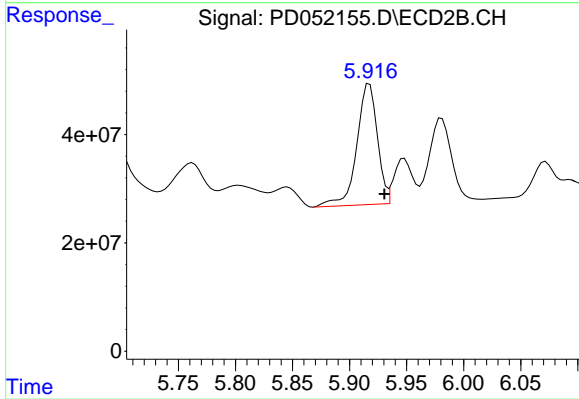
Instrument :
 ECD_D
 ClientSampleId :
 BF5R8MSRE



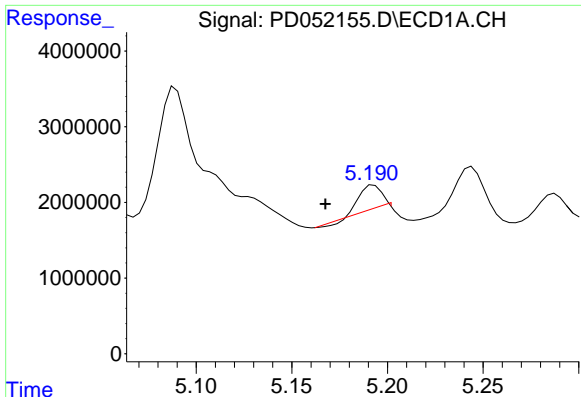
#7 delta-BHC
 R.T.: 5.139 min
 Delta R.T.: 0.028 min
 Response: 349112763
 Conc: 8.80 ng/ml



#8 Heptachlor epoxide
 R.T.: 4.872 min
 Delta R.T.: 0.026 min
 Response: 4680836
 Conc: 2.32 ng/ml

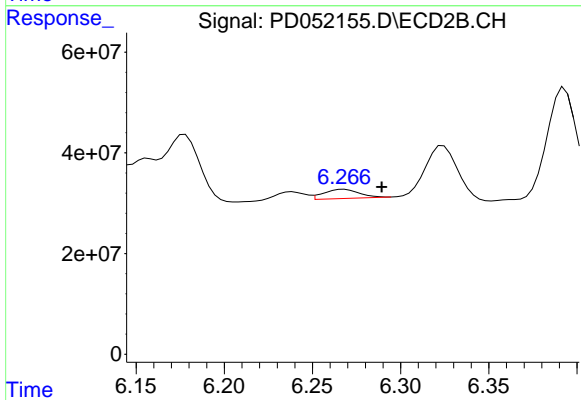


#8 Heptachlor epoxide
 R.T.: 5.917 min
 Delta R.T.: -0.013 min
 Response: 279965762
 Conc: 8.22 ng/ml

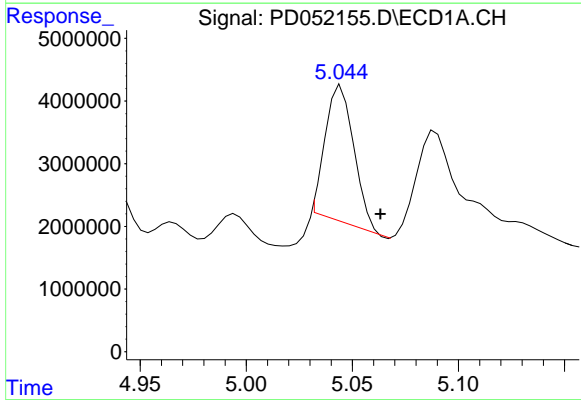


#9 Endosulfan I
 R.T.: 5.193 min
 Delta R.T.: 0.025 min
 Response: 1876785
 Conc: 0.97 ng/ml

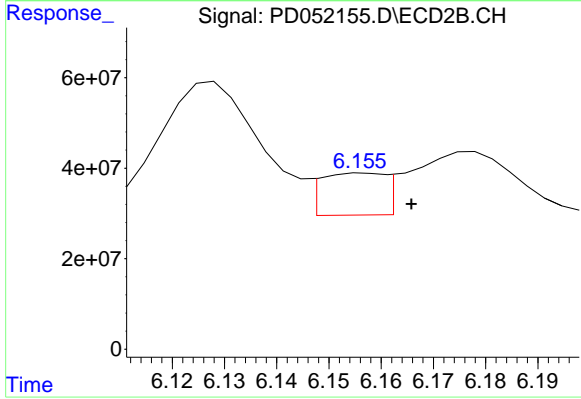
Instrument :
 ECD_D
 ClientSampleId :
 BF5R8MSRE



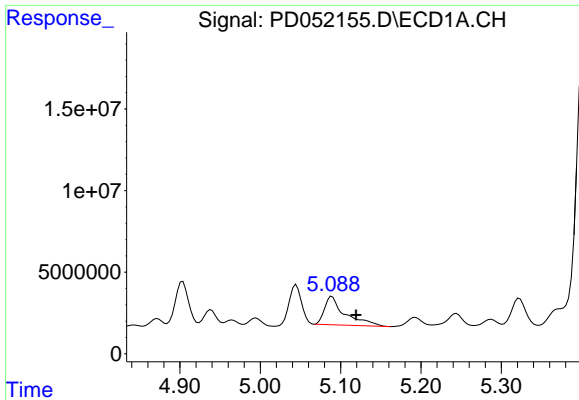
#9 Endosulfan I
 R.T.: 6.268 min
 Delta R.T.: -0.021 min
 Response: 25502598
 Conc: 0.81 ng/ml



#10 trans-Chlordane
 R.T.: 5.045 min
 Delta R.T.: -0.018 min
 Response: 20311047
 Conc: 9.86 ng/ml

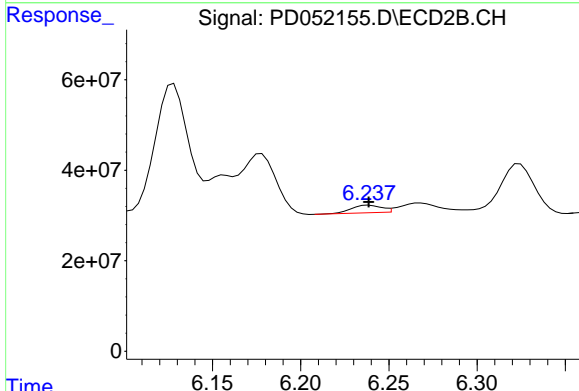


#10 trans-Chlordane
 R.T.: 6.157 min
 Delta R.T.: -0.009 min
 Response: 78408198
 Conc: 2.31 ng/ml

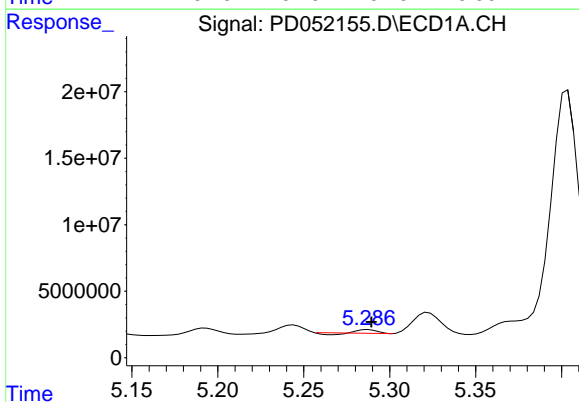


#11 cis-Chlordane
 R.T.: 5.089 min
 Delta R.T.: -0.030 min
 Response: 30672329
 Conc: 15.21 ng/ml

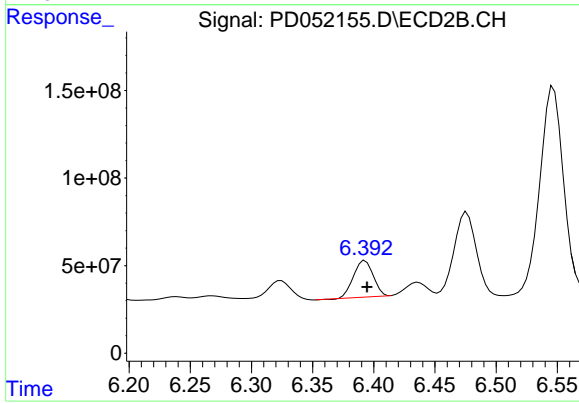
Instrument :
 ECD_D
ClientSampled :
 BF5R8MSRE



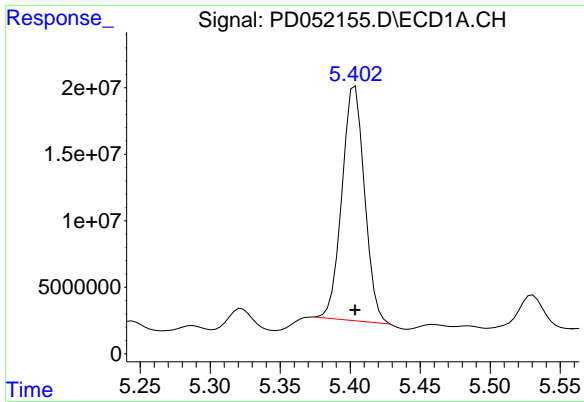
#11 cis-Chlordane
 R.T.: 6.239 min
 Delta R.T.: 0.000 min
 Response: 20064328
 Conc: 0.62 ng/ml



#12 4,4'-DDE
 R.T.: 5.288 min
 Delta R.T.: -0.002 min
 Response: 1215008
 Conc: 0.60 ng/ml



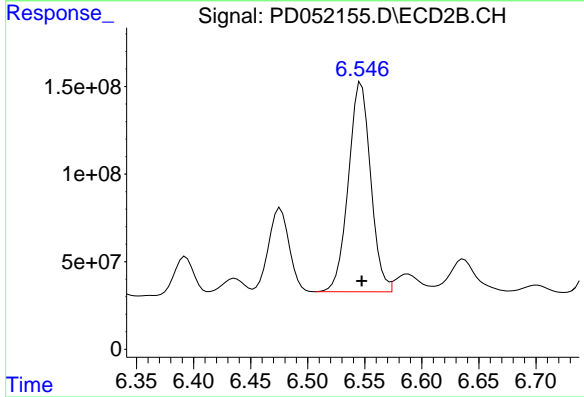
#12 4,4'-DDE
 R.T.: 6.393 min
 Delta R.T.: -0.002 min
 Response: 234659376
 Conc: 7.67 ng/ml



#13 Dieldrin

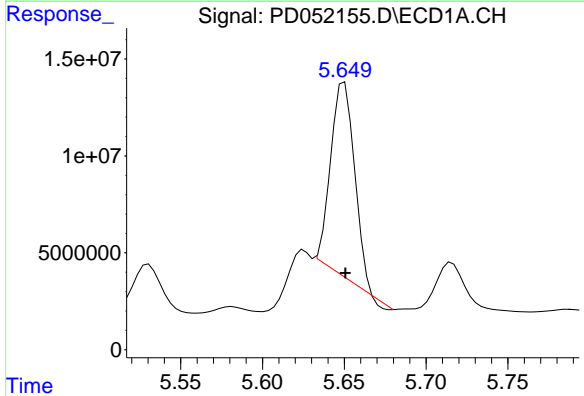
R.T.: 5.404 min
 Delta R.T.: 0.000 min
 Response: 197572014
 Conc: 91.05 ng/ml

Instrument :
 ECD_D
 ClientSampleId :
 BF5R8MSRE



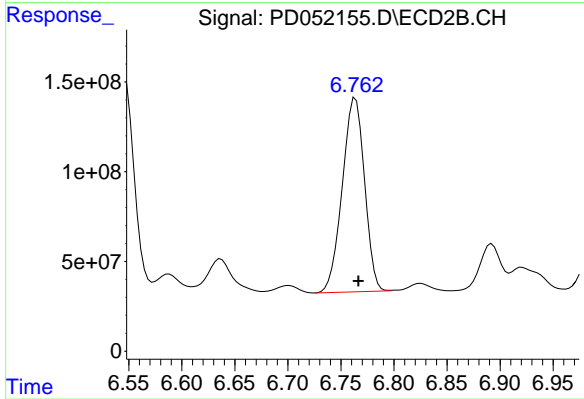
#13 Dieldrin

R.T.: 6.547 min
 Delta R.T.: 0.000 min
 Response: 1623039291
 Conc: 52.07 ng/ml



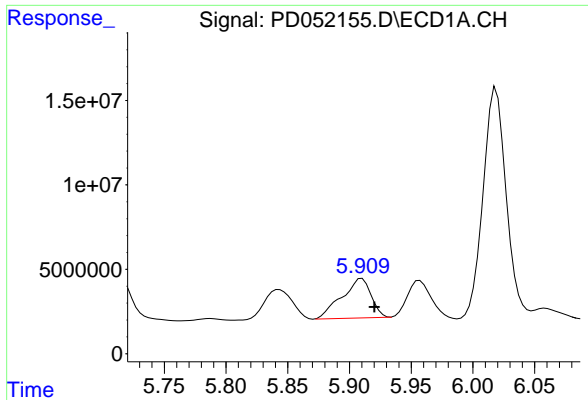
#14 Endrin

R.T.: 5.650 min
 Delta R.T.: 0.000 min
 Response: 101268113
 Conc: 56.82 ng/ml



#14 Endrin

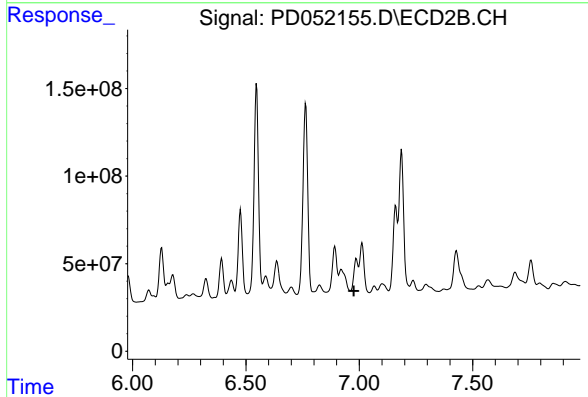
R.T.: 6.764 min
 Delta R.T.: -0.003 min
 Response: 1576149635
 Conc: 68.47 ng/ml



#15 Endosulfan II

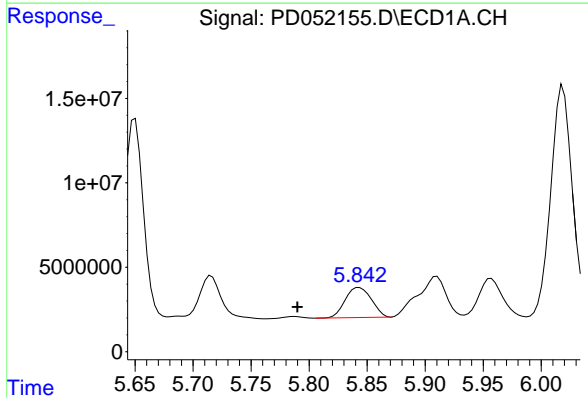
R.T.: 5.910 min
 Delta R.T.: -0.010 min
 Response: 38516731
 Conc: 20.13 ng/ml

Instrument :
 ECD_D
 ClientSampleId :
 BF5R8MSRE



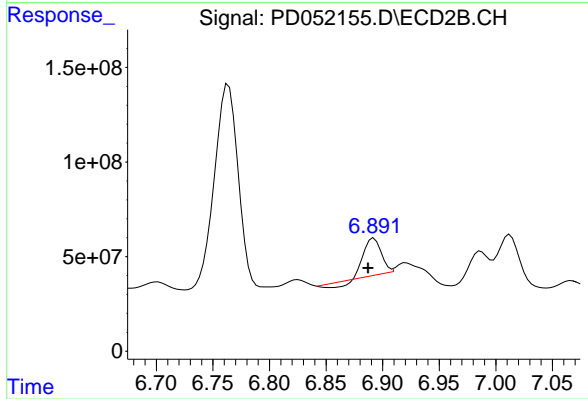
#15 Endosulfan II

R.T.: 6.987 min
 Delta R.T.: 0.011 min
 Response: -77064077
 Conc: N.D.



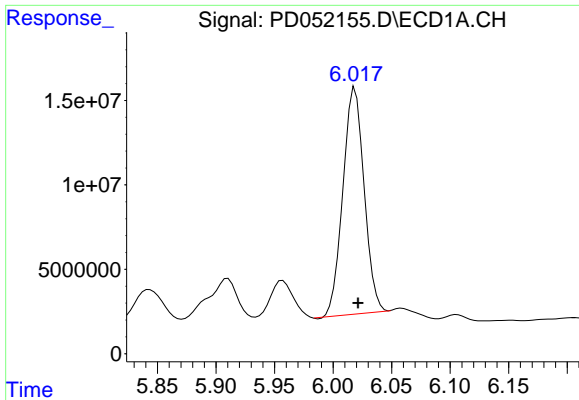
#16 4,4'-DDD

R.T.: 5.843 min
 Delta R.T.: 0.053 min
 Response: 27970674
 Conc: 16.67 ng/ml



#16 4,4'-DDD

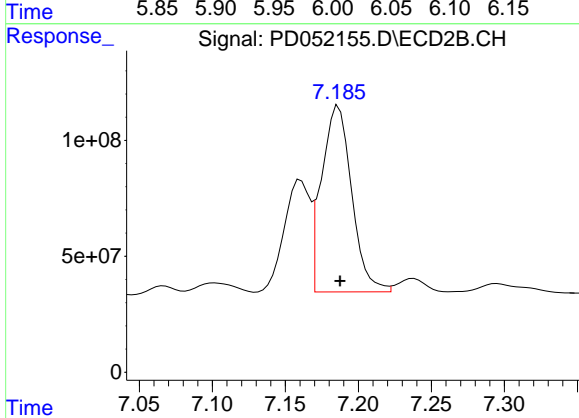
R.T.: 6.892 min
 Delta R.T.: 0.005 min
 Response: 178321845
 Conc: 7.49 ng/ml



#17 4,4'-DDT

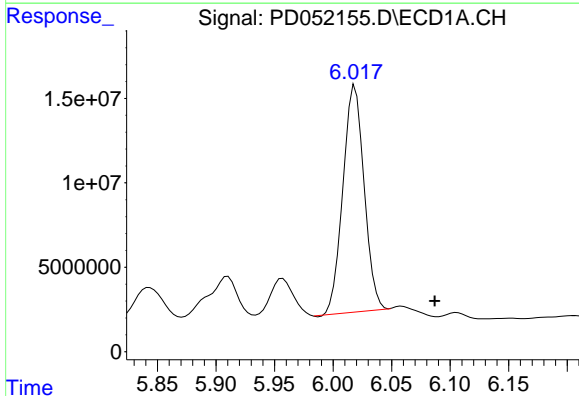
R.T.: 6.019 min
Delta R.T.: -0.003 min
Response: 169095020
Conc: 103.02 ng/ml

Instrument :
ECD_D
ClientSampled :
BF5R8MSRE



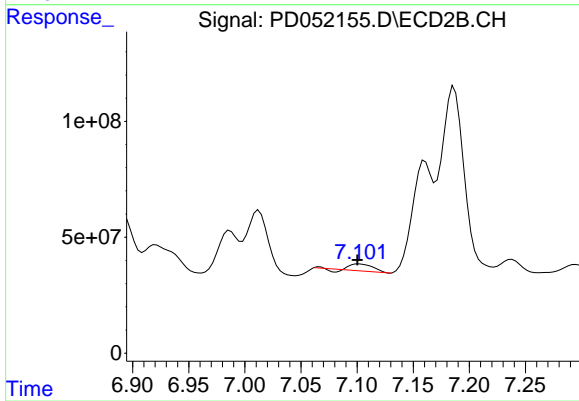
#17 4,4'-DDT

R.T.: 7.187 min
Delta R.T.: 0.000 min
Response: 1159109562
Conc: 60.03 ng/ml



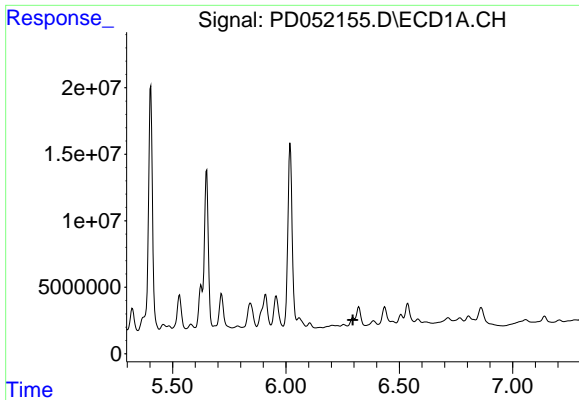
#18 Endrin aldehyde

R.T.: 6.019 min
Delta R.T.: -0.068 min
Response: 169095020
Conc: 110.28 ng/ml



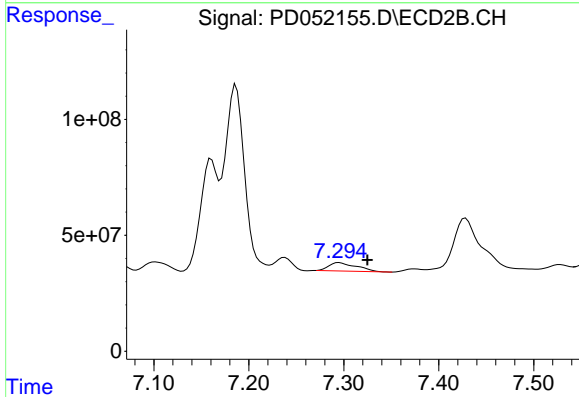
#18 Endrin aldehyde

R.T.: 7.102 min
Delta R.T.: 0.001 min
Response: 37861717
Conc: 1.85 ng/ml

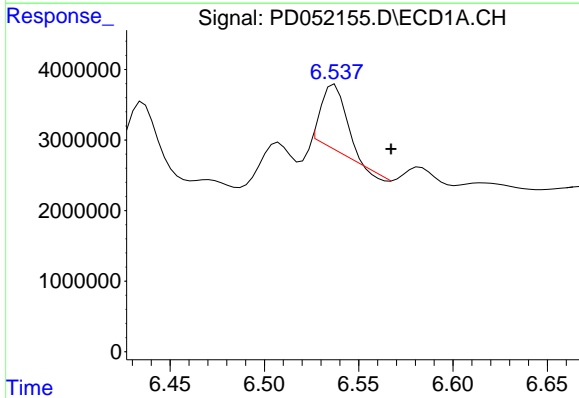


#19 Endosulfan Sulfate
 R.T.: 6.296 min
 Delta R.T.: 0.000 min
 Response: -2368432
 Conc: N.D.

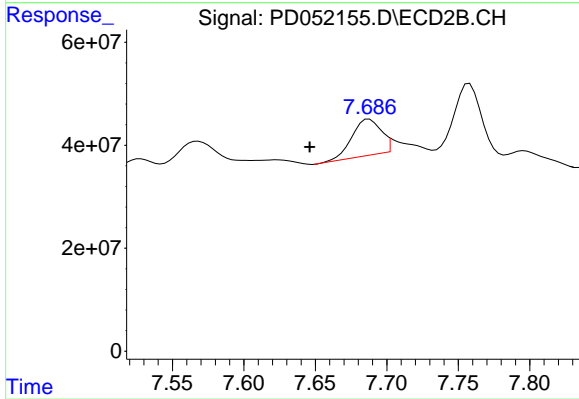
Instrument :
 ECD_D
 ClientSampleId :
 BF5R8MSRE



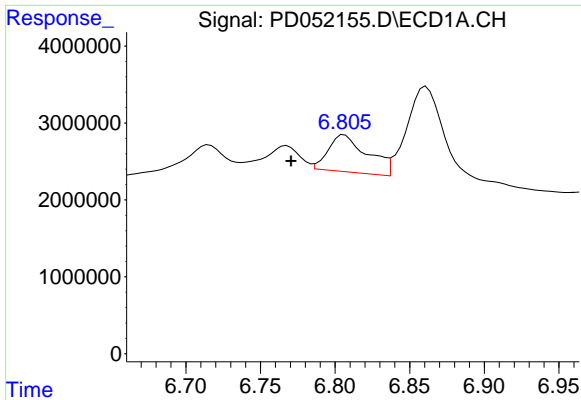
#19 Endosulfan Sulfate
 R.T.: 7.295 min
 Delta R.T.: -0.029 min
 Response: 73134591
 Conc: 3.25 ng/ml



#20 Methoxychlor
 R.T.: 6.537 min
 Delta R.T.: -0.030 min
 Response: 8073694
 Conc: 8.50 ng/ml

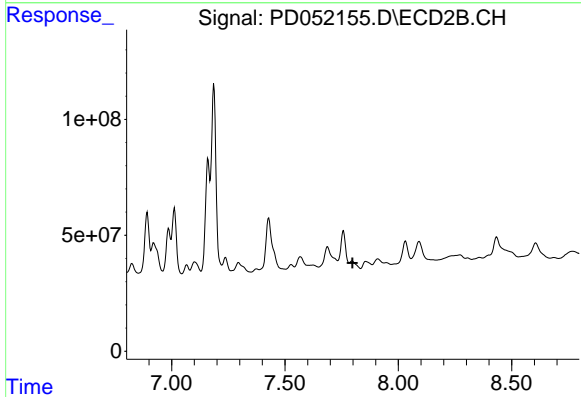


#20 Methoxychlor
 R.T.: 7.688 min
 Delta R.T.: 0.042 min
 Response: 102298232
 Conc: 11.00 ng/ml

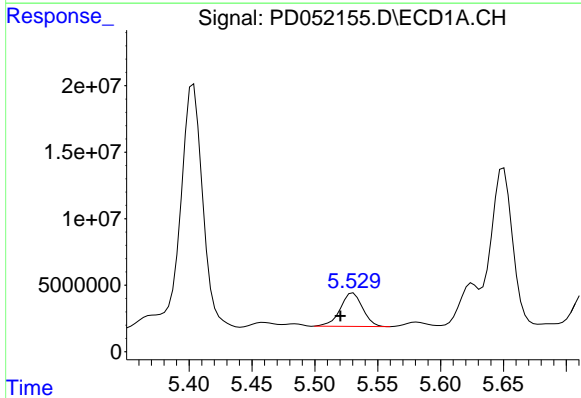


#21 Endrin ketone
 R.T.: 6.806 min
 Delta R.T.: 0.036 min
 Response: 8807430
 Conc: 4.44 ng/ml

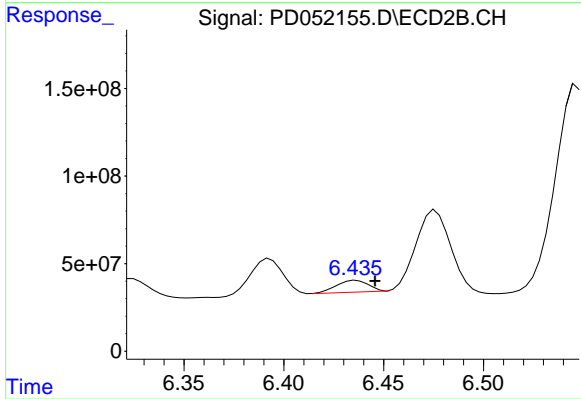
Instrument :
 ECD_D
ClientSampleId :
 BF5R8MSRE



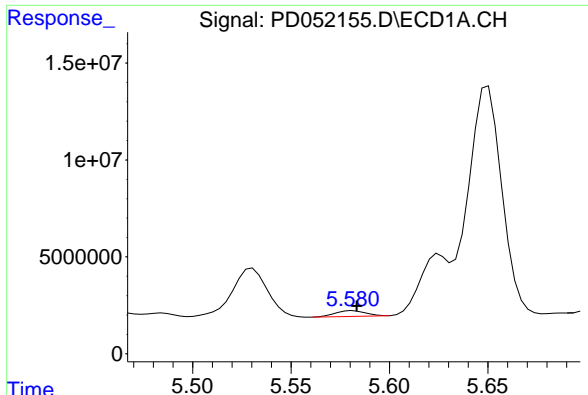
#21 Endrin ketone
 R.T.: 0.000 min
 Exp R.T. : 7.798 min
 Response: 0
 Conc: N.D.



#22 Toxaphene-1
 R.T.: 5.530 min
 Delta R.T.: 0.010 min
 Response: 31063463
 Conc: 2428.83 ng/ml

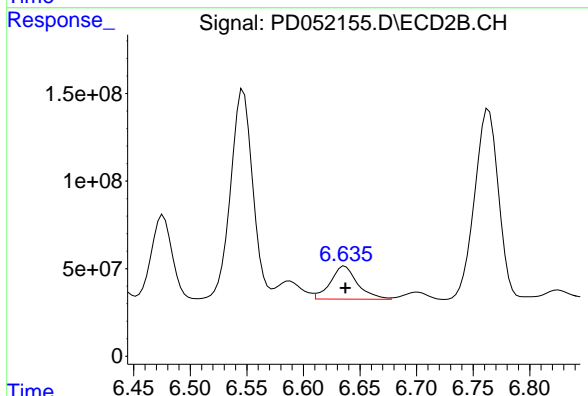


#22 Toxaphene-1
 R.T.: 6.436 min
 Delta R.T.: -0.009 min
 Response: 78213645
 Conc: 583.49 ng/ml

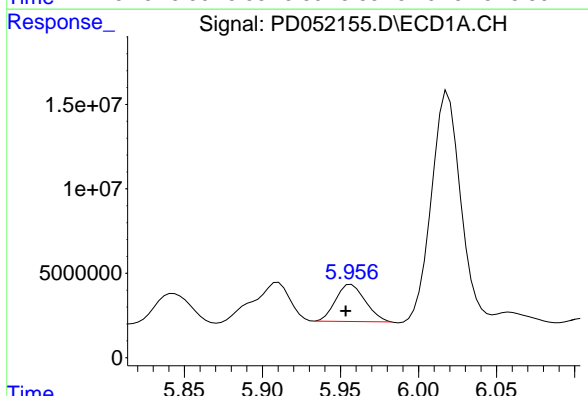


#23 Toxaphene-2
 R.T.: 5.581 min
 Delta R.T.: -0.002 min
 Response: 3128569
 Conc: 142.68 ng/ml

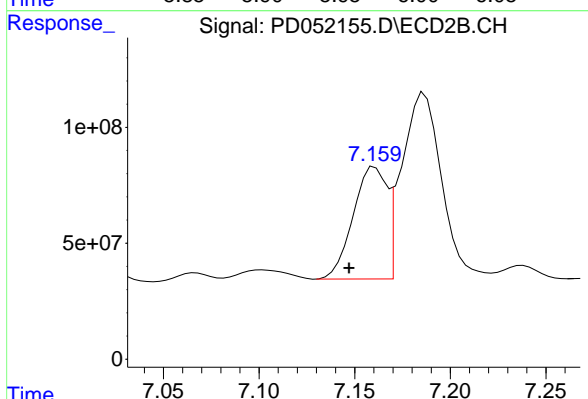
Instrument :
 ECD_D
ClientSampleId :
 BF5R8MSRE



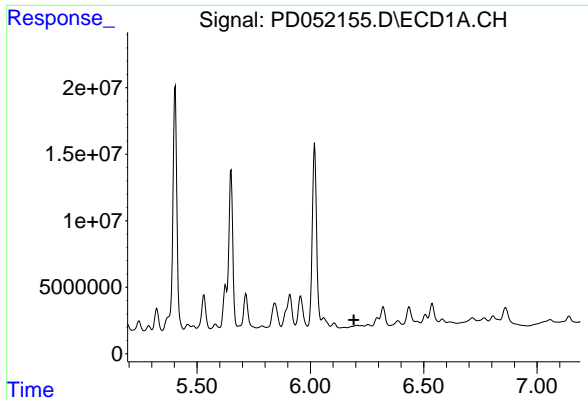
#23 Toxaphene-2
 R.T.: 6.637 min
 Delta R.T.: 0.000 min
 Response: 314496765
 Conc: 1258.99 ng/ml



#24 Toxaphene-3
 R.T.: 5.957 min
 Delta R.T.: 0.003 min
 Response: 28900322
 Conc: 817.96 ng/ml

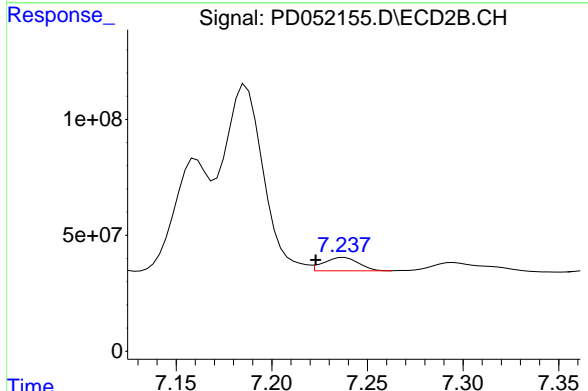


#24 Toxaphene-3
 R.T.: 7.161 min
 Delta R.T.: 0.013 min
 Response: 590416686
 Conc: 2920.12 ng/ml

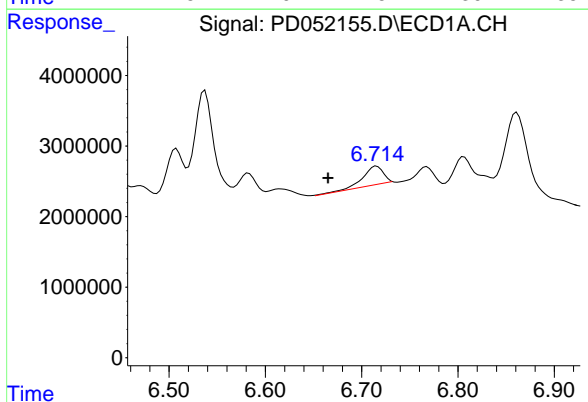


#25 Toxaphene-4
 R.T.: 0.000 min
 Exp R.T.: 6.192 min
 Response: 0
 Conc: N.D.

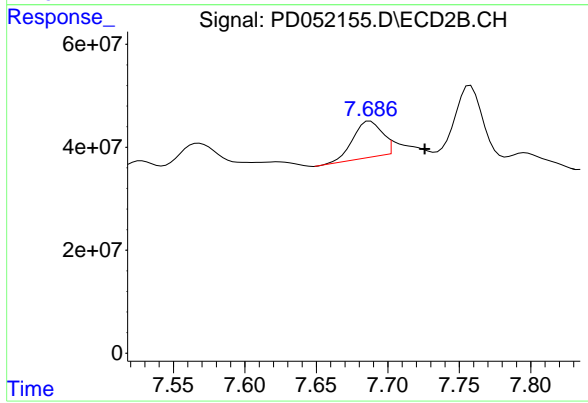
Instrument :
 ECD_D
 ClientSampleId :
 BF5R8MSRE



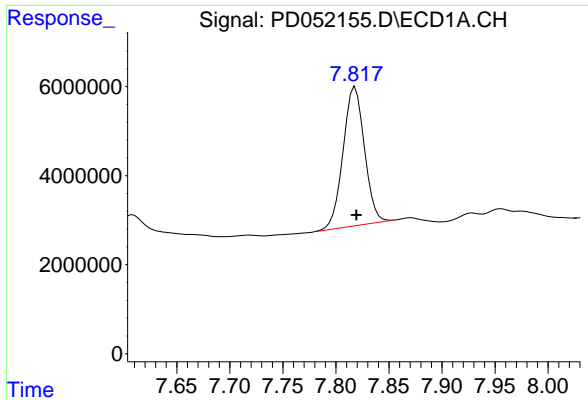
#25 Toxaphene-4
 R.T.: 7.238 min
 Delta R.T.: 0.015 min
 Response: 73164844
 Conc: 131.45 ng/ml



#26 Toxaphene-5
 R.T.: 6.716 min
 Delta R.T.: 0.051 min
 Response: 4134951
 Conc: 95.49 ng/ml



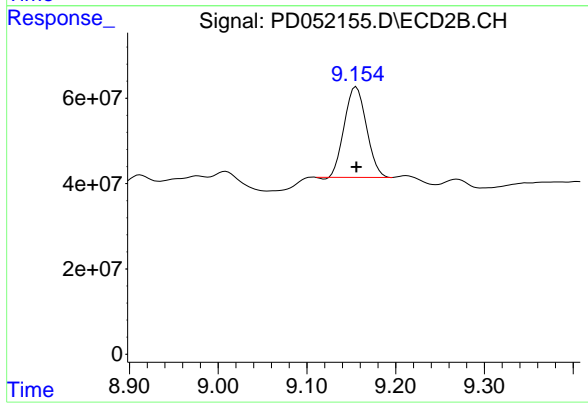
#26 Toxaphene-5
 R.T.: 7.688 min
 Delta R.T.: -0.038 min
 Response: 102298232
 Conc: 434.97 ng/ml



#27 Decachlorobiphenyl

R.T.: 7.818 min
Delta R.T.: -0.001 min
Response: 43545815
Conc: 27.81 ng/ml

Instrument :
ECD_D
ClientSampled :
BF5R8MSRE



#27 Decachlorobiphenyl

R.T.: 9.156 min
Delta R.T.: 0.000 min
Response: 367314717
Conc: 23.79 ng/ml