

Data Path : Z:\pestpcbsrv\HPCHEM1\ECD_D\Data\PD032619\
 Data File : PD052167.D
 Signal(s) : Signal #1: ECD1A.CH Signal #2: ECD2B.CH
 Acq On : 26 Mar 2019 17:14
 Operator : AJ\SJ
 Sample : K2065-14RE
 Misc :
 ALS Vial : 48 Sample Multiplier: 1

Instrument :
 ECD_D
 ClientSampleId :
 BF5M9RE

Integration File signal 1: autoint1.e
 Integration File signal 2: autoint2.e
 Quant Time: Mar 27 08:06:18 2019
 Quant Method : Z:\pestpcbsrv\HPCHEM1\ECD_D\Method\PD032519CLP.M
 Quant Title : GC Extractables
 QLast Update : Mon Mar 25 18:59:03 2019
 Response via : Initial Calibration
 Integrator: ChemStation 6890 Scale Mode: Large solvent peaks clipped

Volume Inj. : 1 µl
 Signal #1 Phase : ZB-MR2 Signal #2 Phase: ZB-MR1
 Signal #1 Info : 30M x 0.32mm x0.2 Signal #2 Info : 30M x 0.32mm x 0.50µm

	Compound	RT#1	RT#2	Resp#1	Resp#2	ng/ml	ng/ml

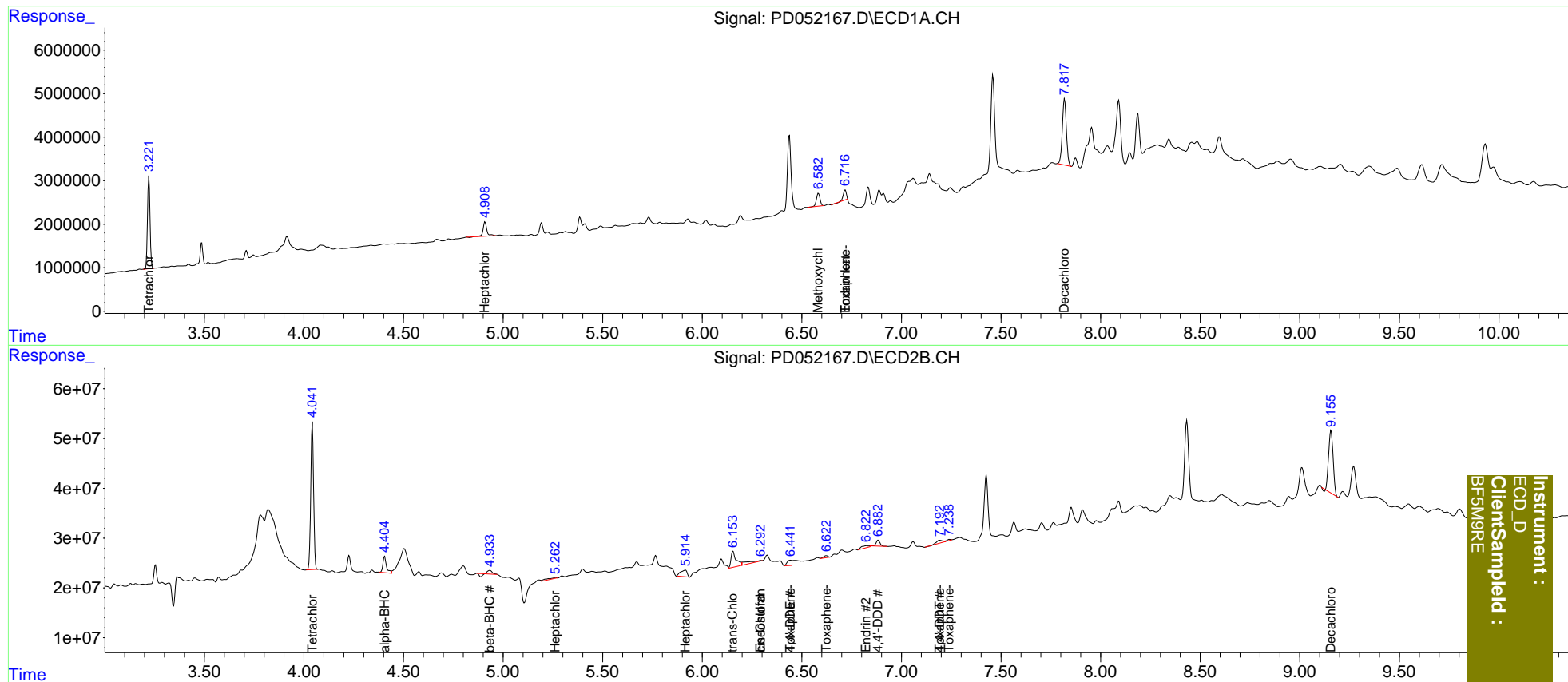
System Monitoring Compounds							
1)	SA Tetrachlo...	3.222	4.043	18505457	297.0E6	13.037	10.207
2)	SA Decachlor...	7.819	9.157	21659431	198.9E6	13.832	12.886
Target Compounds							
2)	A alpha-BHC	0.000	4.405f	0	41526701	N.D.	0.950
4)	MA Heptachlor	0.000	5.264f	0	9059092	N.D.	0.226
6)	B beta-BHC	0.000	4.934f	0	5804322	N.D.	0.316
8)	B Heptachlo...	4.910f	5.915	4284885	30643285	2.122	0.899 #
9)	A Endosulfan I	0.000	6.295	0	18153015	N.D.	0.579
10)	B trans-Chl...	0.000	6.154	0	57116086	N.D.	1.682
11)	B cis-Chlor...	0.000	6.295f	0	18153015	N.D.	0.559
12)	B 4,4'-DDE	0.000	6.443f	0	15821467	N.D.	0.517
14)	MA Endrin	0.000	6.824f	0	12236858	N.D.	0.532
16)	A 4,4'-DDD	0.000	6.883	0	16224838	N.D.	0.681
17)	MA 4,4'-DDT	0.000	7.193	0	11479948	N.D.	0.595
20)	A Methoxychlor	6.583	0.000	3714097	0	3.912	N.D. #
21)	B Endrin ke...	6.717f	0.000	2537838	0	1.279	N.D. #
22)	Toxaphene-1	0.000	6.443	0	15821467	N.D.	118.031
23)	Toxaphene-2	0.000	6.623	0	6000283	N.D.	24.020
24)	Toxaphene-3	0.000	7.193	0	11479948	N.D.	56.778
25)	Toxaphene-4	0.000	7.241	0	2923637	N.D.	5.253
26)	Toxaphene-5	6.717	0.000	2537838	0	58.604	N.D. #

(f)=RT Delta > 1/2 Window (#)=Amounts differ by > 25% (m)=manual int.

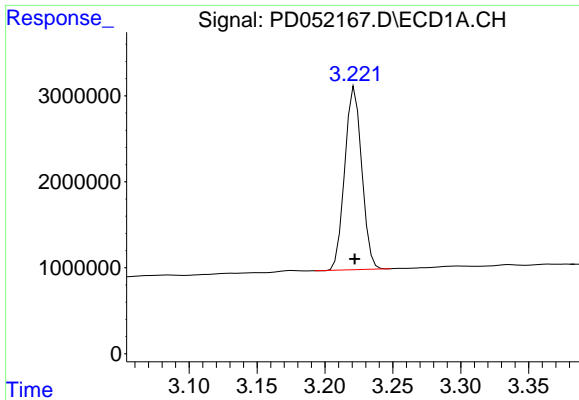
Data Path : Z:\pestpcbsrv\HPCHEM1\ECD_D\Data\PD032619\
 Data File : PD052167.D
 Signal(s) : Signal #1: ECD1A.CH Signal #2: ECD2B.CH
 Acq On : 26 Mar 2019 17:14
 Operator : AJ\SJ
 Sample : K2065-14RE
 Misc :
 ALS Vial : 48 Sample Multiplier: 1

Integration File signal 1: autoint1.e
 Integration File signal 2: autoint2.e
 Quant Time: Mar 27 08:06:18 2019
 Quant Method : Z:\pestpcbsrv\HPCHEM1\ECD_D\Method\PD032519CLP.M
 Quant Title : GC Extractables
 QLast Update : Mon Mar 25 18:59:03 2019
 Response via : Initial Calibration
 Integrator: ChemStation 6890 Scale Mode: Large solvent peaks clipped

Volume Inj. : 1 µl
 Signal #1 Phase : ZB-MR2 Signal #2 Phase: ZB-MR1
 Signal #1 Info : 30M x 0.32mm x0.2 Signal #2 Info : 30M x 0.32mm x 0.50µm



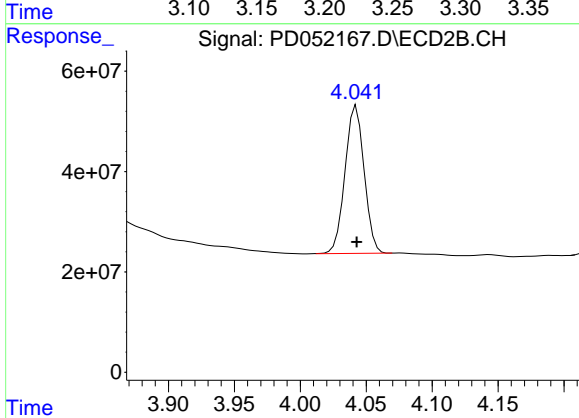
Instrument :
 ECD_D
 ClientSampleId :
 BFM9RE



#1 Tetrachloro-m-xylene

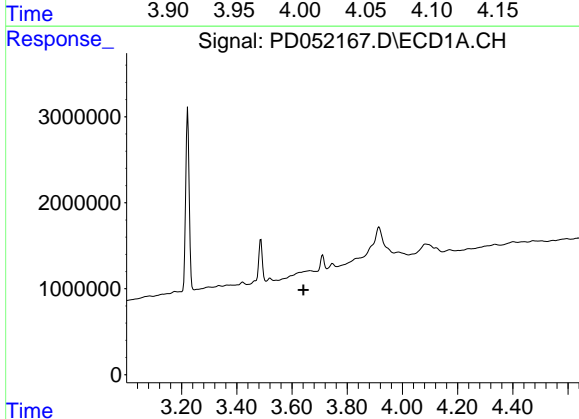
R.T.: 3.222 min
 Delta R.T.: 0.000 min
 Response: 18505457
 Conc: 13.04 ng/ml

Instrument :
 ECD_D
 ClientSampleId :
 BF5M9RE



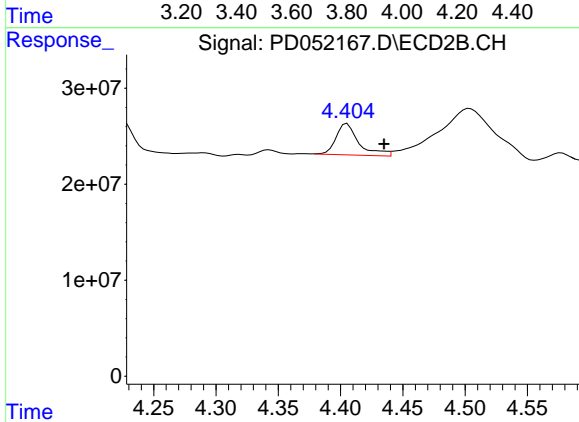
#1 Tetrachloro-m-xylene

R.T.: 4.043 min
 Delta R.T.: 0.000 min
 Response: 296988639
 Conc: 10.21 ng/ml



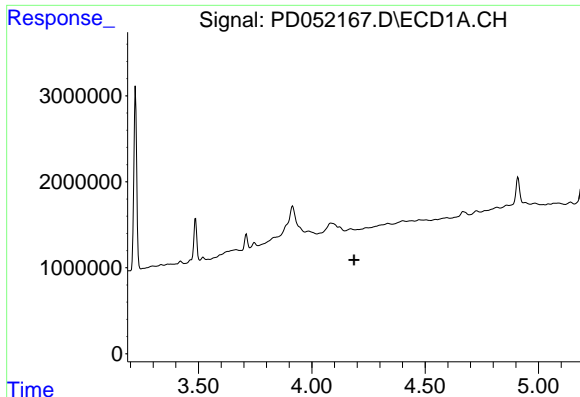
#2 alpha-BHC

R.T.: 0.000 min
 Exp R.T. : 3.641 min
 Response: 0
 Conc: N.D.



#2 alpha-BHC

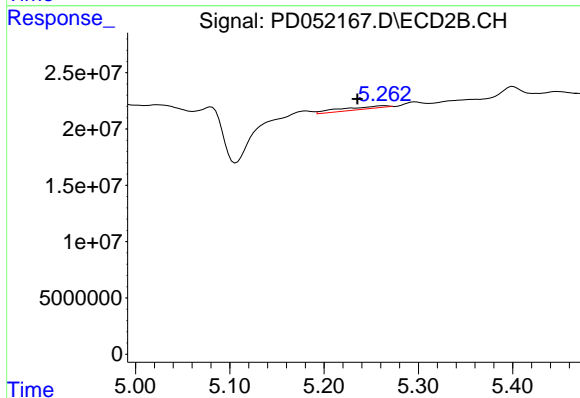
R.T.: 4.405 min
 Delta R.T.: -0.030 min
 Response: 41526701
 Conc: 0.95 ng/ml



#4 Heptachlor

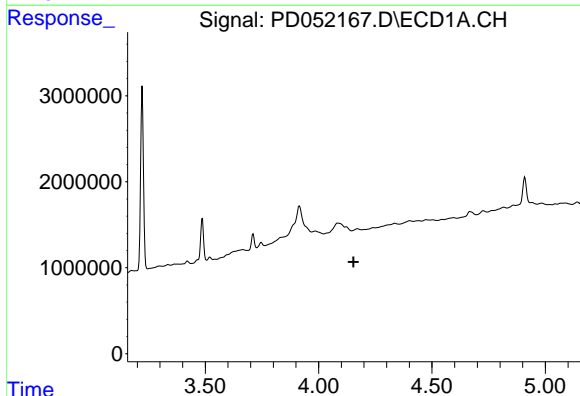
R.T.: 0.000 min
 Exp R.T. : 4.187 min
 Response: 0
 Conc: N.D.

Instrument :
 ECD_D
 ClientSampleId :
 BF5M9RE



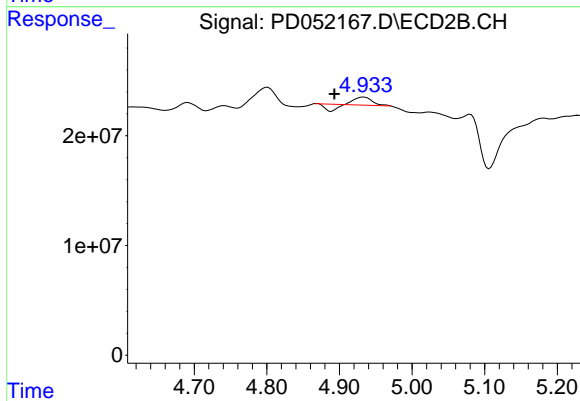
#4 Heptachlor

R.T.: 5.264 min
 Delta R.T.: 0.029 min
 Response: 9059092
 Conc: 0.23 ng/ml



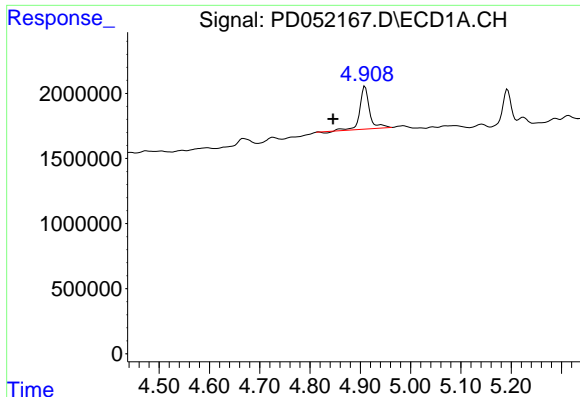
#6 beta-BHC

R.T.: 0.000 min
 Exp R.T. : 4.154 min
 Response: 0
 Conc: N.D.



#6 beta-BHC

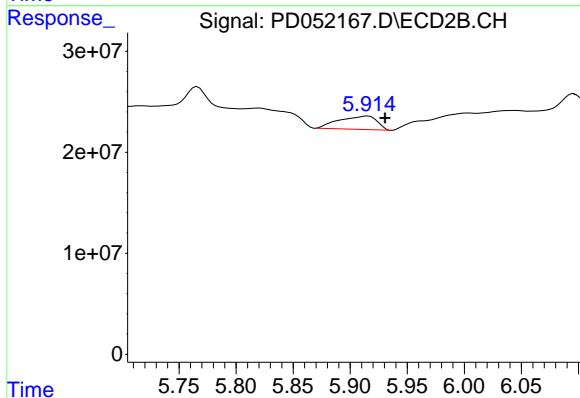
R.T.: 4.934 min
 Delta R.T.: 0.041 min
 Response: 5804322
 Conc: 0.32 ng/ml



#8 Heptachlor epoxide

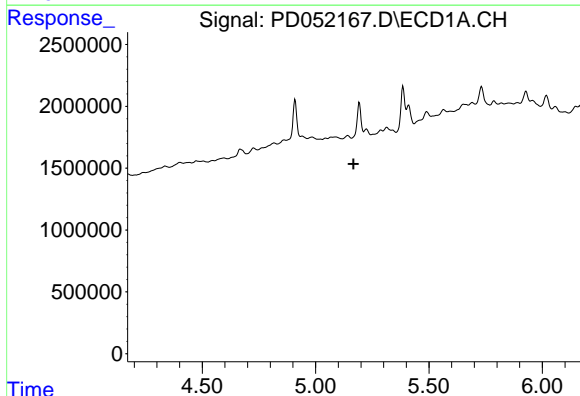
R.T.: 4.910 min
 Delta R.T.: 0.063 min
 Response: 4284885
 Conc: 2.12 ng/ml

Instrument :
 ECD_D
 ClientSampleId :
 BF5M9RE



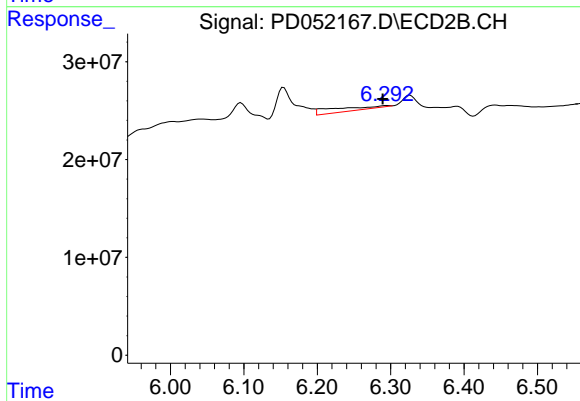
#8 Heptachlor epoxide

R.T.: 5.915 min
 Delta R.T.: -0.015 min
 Response: 30643285
 Conc: 0.90 ng/ml



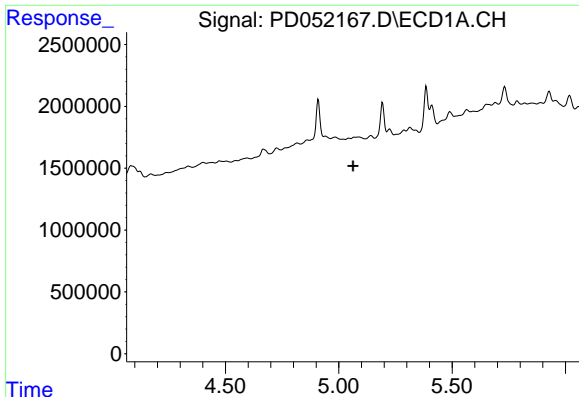
#9 Endosulfan I

R.T.: 0.000 min
 Exp R.T. : 5.168 min
 Response: 0
 Conc: N.D.



#9 Endosulfan I

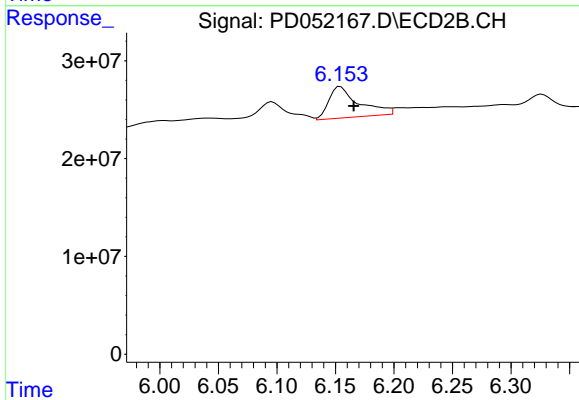
R.T.: 6.295 min
 Delta R.T.: 0.005 min
 Response: 18153015
 Conc: 0.58 ng/ml



#10 trans-Chlordane

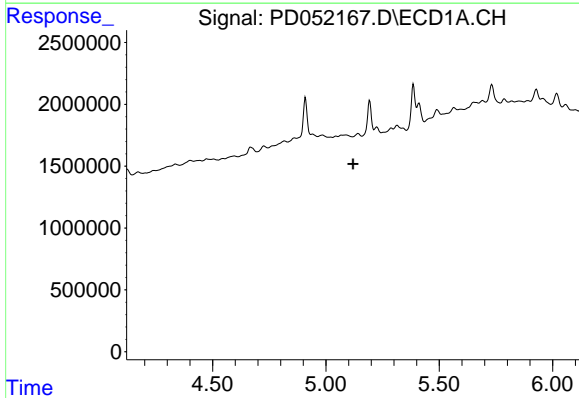
R.T.: 0.000 min
 Exp R.T. : 5.063 min
 Response: 0
 Conc: N.D.

Instrument :
 ECD_D
 ClientSampleId :
 BF5M9RE



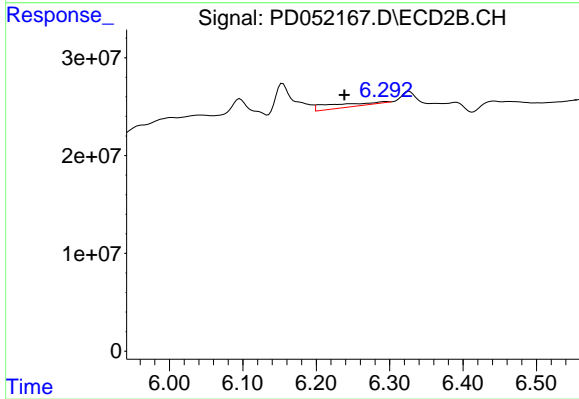
#10 trans-Chlordane

R.T.: 6.154 min
 Delta R.T.: -0.011 min
 Response: 57116086
 Conc: 1.68 ng/ml



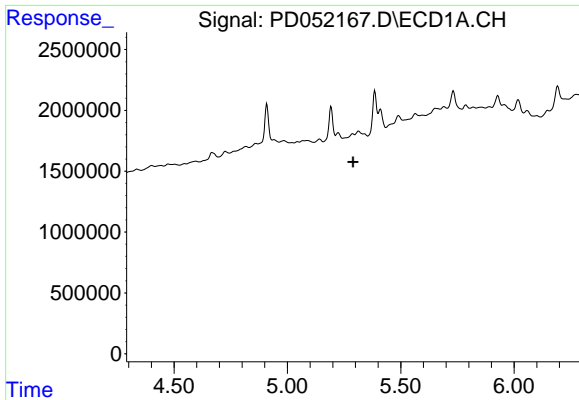
#11 cis-Chlordane

R.T.: 0.000 min
 Exp R.T. : 5.119 min
 Response: 0
 Conc: N.D.



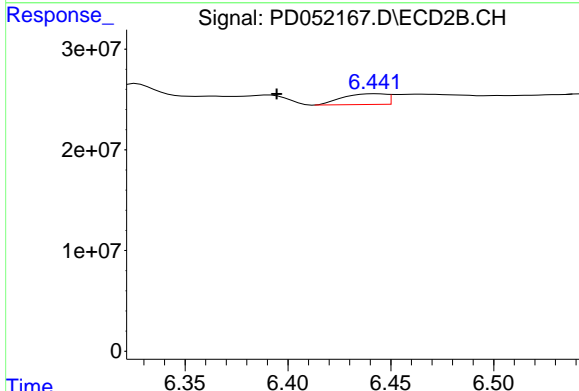
#11 cis-Chlordane

R.T.: 6.295 min
 Delta R.T.: 0.056 min
 Response: 18153015
 Conc: 0.56 ng/ml

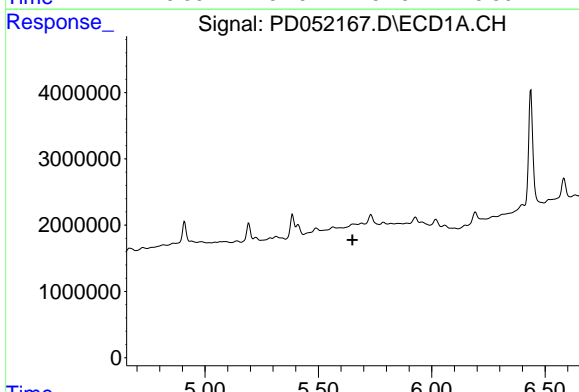


#12 4,4'-DDE
 R.T.: 0.000 min
 Exp R.T.: 5.289 min
 Response: 0
 Conc: N.D.

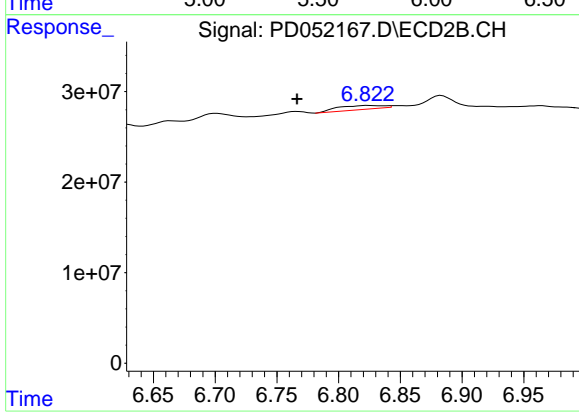
Instrument :
 ECD_D
ClientSampleId :
 BF5M9RE



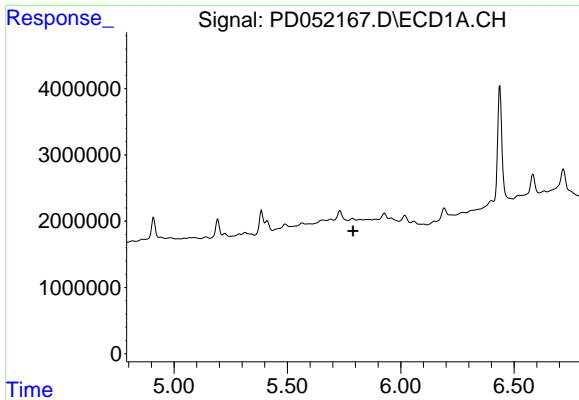
#12 4,4'-DDE
 R.T.: 6.443 min
 Delta R.T.: 0.048 min
 Response: 15821467
 Conc: 0.52 ng/ml



#14 Endrin
 R.T.: 0.000 min
 Exp R.T.: 5.651 min
 Response: 0
 Conc: N.D.



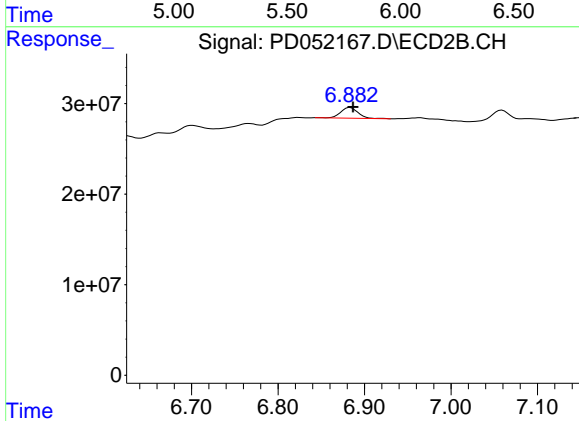
#14 Endrin
 R.T.: 6.824 min
 Delta R.T.: 0.058 min
 Response: 12236858
 Conc: 0.53 ng/ml



#16 4,4'-DDD

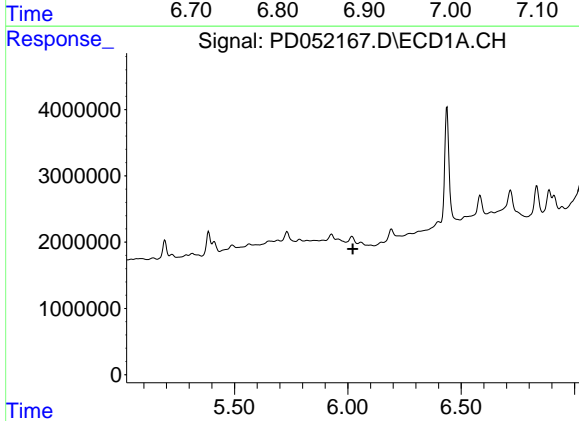
R.T.: 0.000 min
 Exp R.T.: 5.790 min
 Response: 0
 Conc: N.D.

Instrument :
 ECD_D
 ClientSampleId :
 BF5M9RE



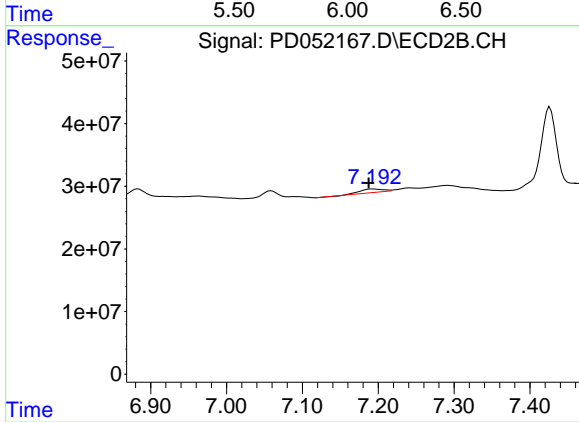
#16 4,4'-DDD

R.T.: 6.883 min
 Delta R.T.: -0.004 min
 Response: 16224838
 Conc: 0.68 ng/ml



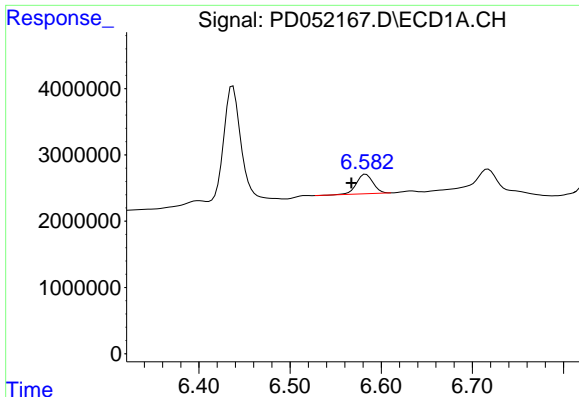
#17 4,4'-DDT

R.T.: 0.000 min
 Exp R.T.: 6.021 min
 Response: 0
 Conc: N.D.



#17 4,4'-DDT

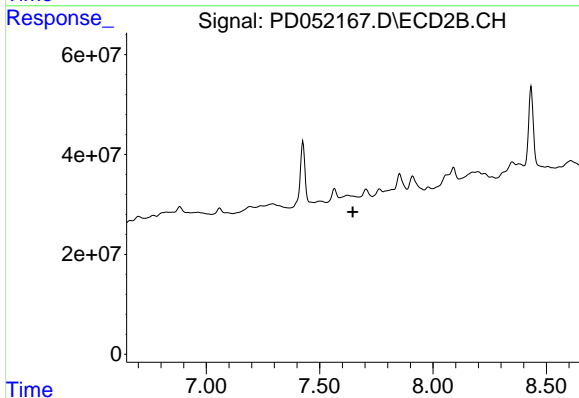
R.T.: 7.193 min
 Delta R.T.: 0.006 min
 Response: 11479948
 Conc: 0.59 ng/ml



#20 Methoxychlor

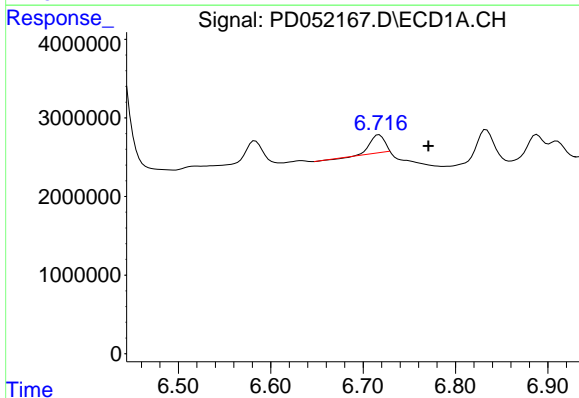
R.T.: 6.583 min
 Delta R.T.: 0.016 min
 Response: 3714097
 Conc: 3.91 ng/ml

Instrument :
 ECD_D
 ClientSampleId :
 BF5M9RE



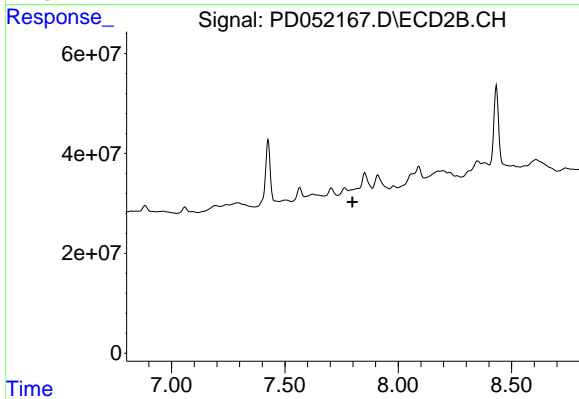
#20 Methoxychlor

R.T.: 0.000 min
 Exp R.T. : 7.646 min
 Response: 0
 Conc: N.D.



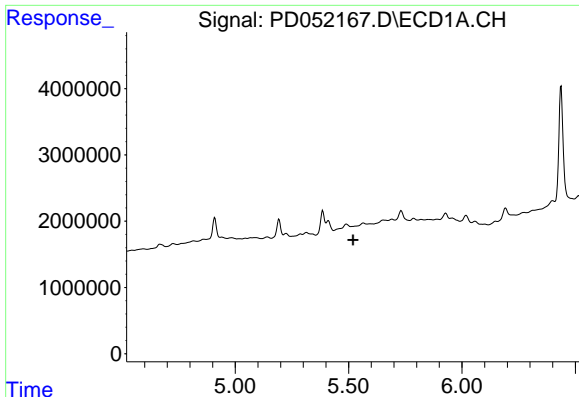
#21 Endrin ketone

R.T.: 6.717 min
 Delta R.T.: -0.053 min
 Response: 2537838
 Conc: 1.28 ng/ml



#21 Endrin ketone

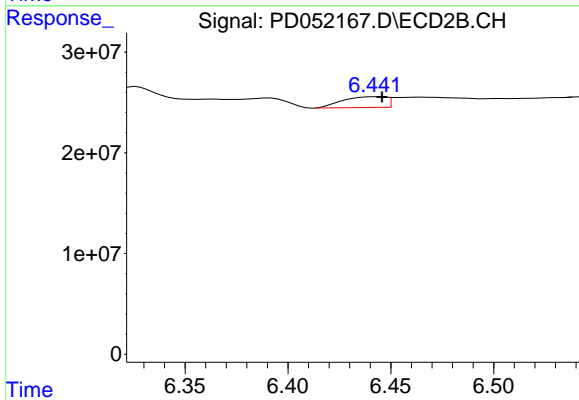
R.T.: 0.000 min
 Exp R.T. : 7.798 min
 Response: 0
 Conc: N.D.



#22 Toxaphene-1

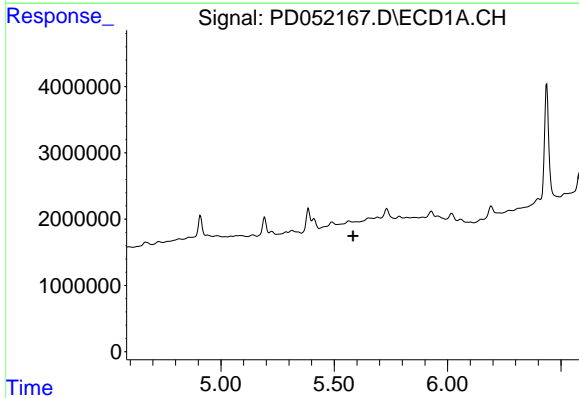
R.T.: 0.000 min
 Exp R.T. : 5.520 min
 Response: 0
 Conc: N.D.

Instrument :
 ECD_D
 ClientSampleId :
 BF5M9RE



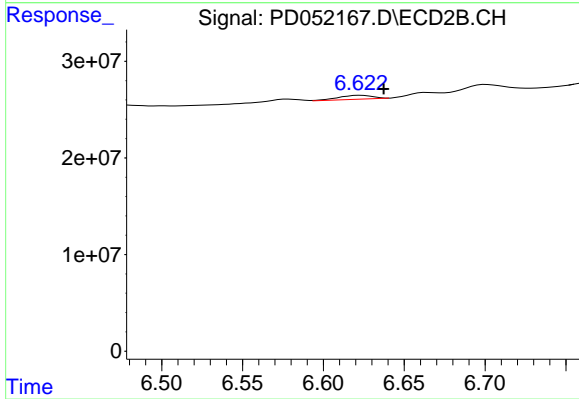
#22 Toxaphene-1

R.T.: 6.443 min
 Delta R.T.: -0.003 min
 Response: 15821467
 Conc: 118.03 ng/ml



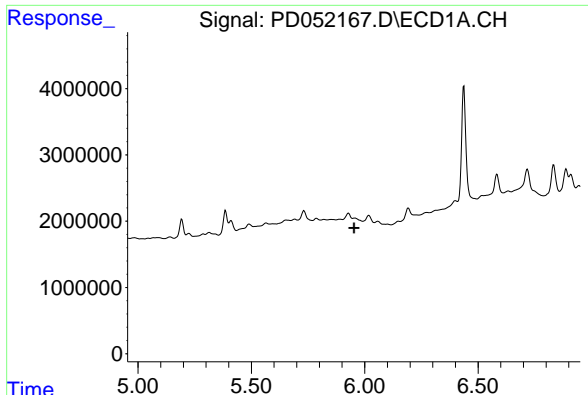
#23 Toxaphene-2

R.T.: 0.000 min
 Exp R.T. : 5.583 min
 Response: 0
 Conc: N.D.



#23 Toxaphene-2

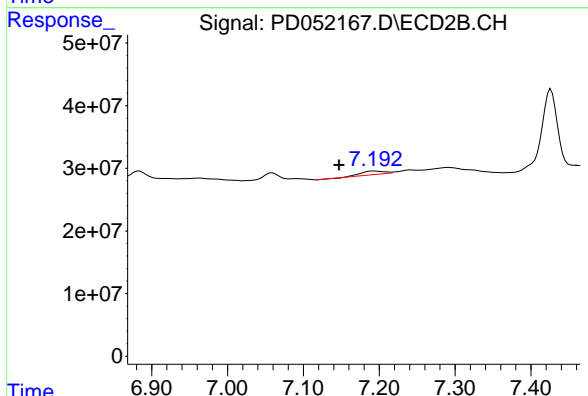
R.T.: 6.623 min
 Delta R.T.: -0.014 min
 Response: 6000283
 Conc: 24.02 ng/ml



#24 Toxaphene-3

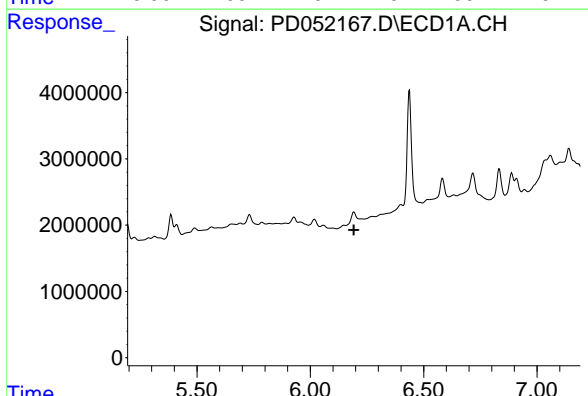
R.T.: 0.000 min
 Exp R.T. : 5.954 min
 Response: 0
 Conc: N.D.

Instrument :
 ECD_D
 ClientSampleId :
 BF5M9RE



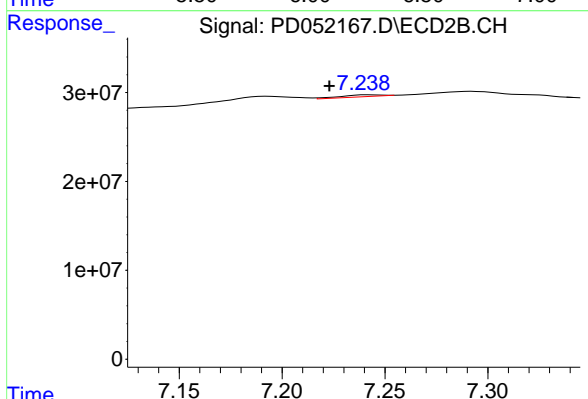
#24 Toxaphene-3

R.T.: 7.193 min
 Delta R.T.: 0.046 min
 Response: 11479948
 Conc: 56.78 ng/ml



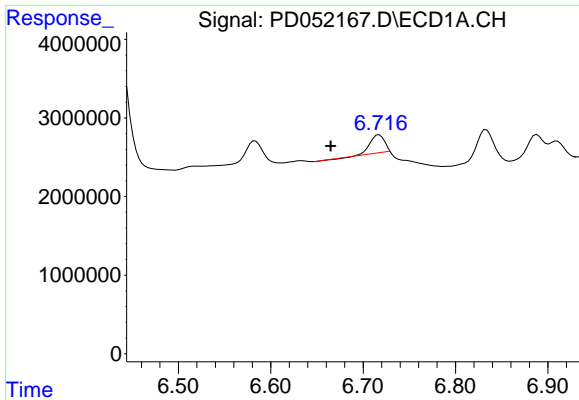
#25 Toxaphene-4

R.T.: 0.000 min
 Exp R.T. : 6.192 min
 Response: 0
 Conc: N.D.



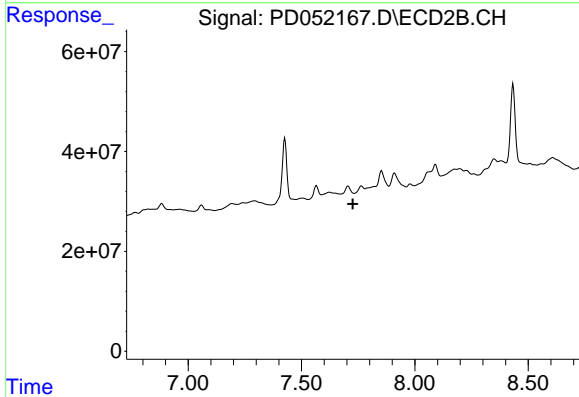
#25 Toxaphene-4

R.T.: 7.241 min
 Delta R.T.: 0.018 min
 Response: 2923637
 Conc: 5.25 ng/ml

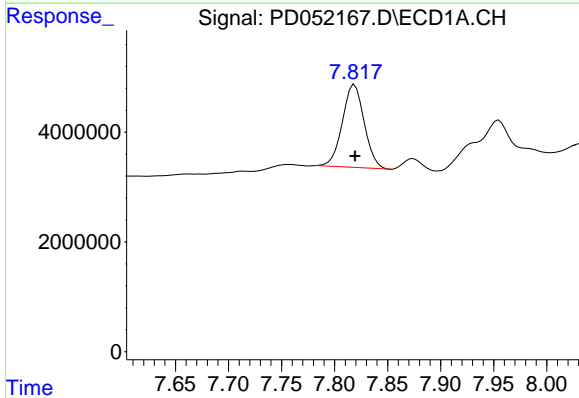


#26 Toxaphene-5
 R.T.: 6.717 min
 Delta R.T.: 0.052 min
 Response: 2537838
 Conc: 58.60 ng/ml

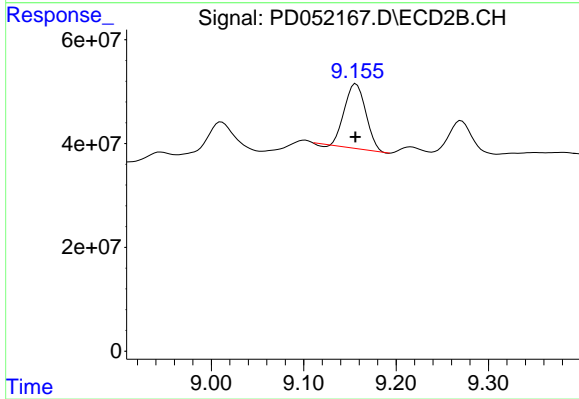
Instrument :
 ECD_D
 ClientSampleId :
 BF5M9RE



#26 Toxaphene-5
 R.T.: 0.000 min
 Exp R.T. : 7.726 min
 Response: 0
 Conc: N.D.



#27 Decachlorobiphenyl
 R.T.: 7.819 min
 Delta R.T.: 0.000 min
 Response: 21659431
 Conc: 13.83 ng/ml



#27 Decachlorobiphenyl
 R.T.: 9.157 min
 Delta R.T.: 0.000 min
 Response: 198915116
 Conc: 12.89 ng/ml