

Data Path : Z:\pestpcbsrv\HPCHEM1\ECD_D\Data\PD032619\
 Data File : PD052169.D
 Signal(s) : Signal #1: ECD1A.CH Signal #2: ECD2B.CH
 Acq On : 26 Mar 2019 18:10
 Operator : AJ\SJ
 Sample : INDA332
 Misc :
 ALS Vial : 26 Sample Multiplier: 1

Instrument :
 ECD_D
 ClientSampleId :
 INDA332

Integration File signal 1: autoint1.e
 Integration File signal 2: autoint2.e
 Quant Time: Mar 27 08:06:40 2019
 Quant Method : Z:\pestpcbsrv\HPCHEM1\ECD_D\Method\PD032519CLP.M
 Quant Title : GC Extractables
 QLast Update : Mon Mar 25 18:59:03 2019
 Response via : Initial Calibration
 Integrator: ChemStation 6890 Scale Mode: Large solvent peaks clipped

Volume Inj. : 1 µl
 Signal #1 Phase : ZB-MR2 Signal #2 Phase: ZB-MR1
 Signal #1 Info : 30M x 0.32mm x0.2 Signal #2 Info : 30M x 0.32mm x 0.50µm

	Compound	RT#1	RT#2	Resp#1	Resp#2	ng/ml	ng/ml

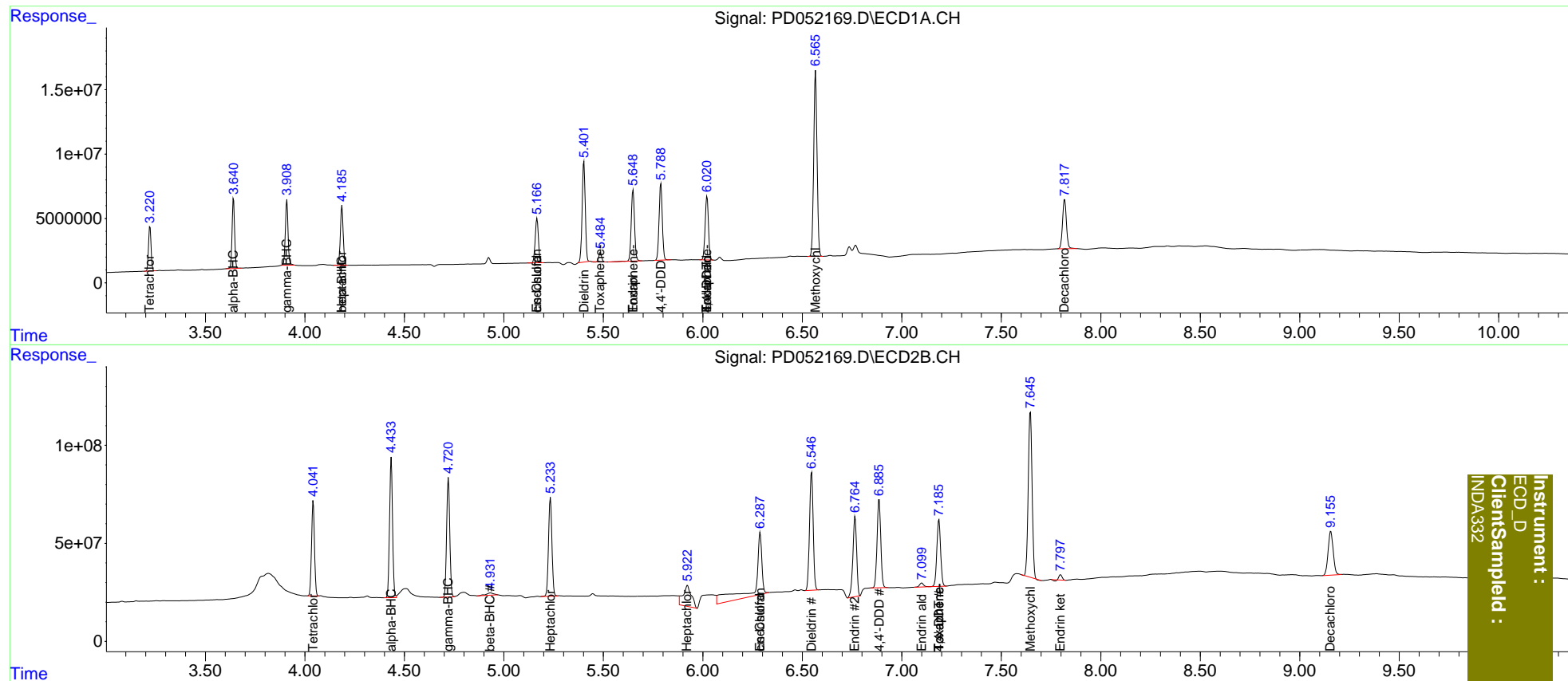
System Monitoring Compounds							
1)	SA Tetrachlo...	3.222	4.042	30691452	499.2E6	21.622	17.155
27)	SA Decachlor...	7.819	9.156	51779974	398.8E6	33.068	25.833
Target Compounds							
2)	A alpha-BHC	3.642	4.434	48537105	754.6E6	21.271	17.257
3)	MA gamma-BHC...	3.910	4.722	47903799	665.5E6	21.377	16.751
4)	MA Heptachlor	4.187	5.234	45940310	599.4E6	20.894	14.943 #
6)	B beta-BHC	4.187f	4.933f	45940310	30815519	48.004	1.679 #
8)	B Heptachlo...	0.000	5.923	0	314.1E6	N.D.	9.221
9)	A Endosulfan I	5.167	6.288	38310097	772.5E6	19.702	24.642 #
11)	B cis-Chlor...	5.167f	6.288f	38310097	772.5E6	19.003	23.792 #
13)	MA Dieldrin	5.403	6.547	85687947	772.6E6	39.490	24.787 #
14)	MA Endrin	5.650	6.765	64109353	537.8E6	35.972	23.364 #
16)	A 4,4'-DDD	5.789	6.886	67331726	586.8E6	40.135	24.646 #
17)	MA 4,4'-DDT	6.021	7.187	56750616	451.9E6	34.575	23.400 #
18)	B Endrin al...	6.021f	7.100	56750616	29443212	37.011	1.438 #
20)	A Methoxychlor	6.567	7.647	169.7E6	1133.2E6	178.683	121.825 #
22)	Toxaphene-1	5.485	0.000	7177196	0	561.180	N.D. #
23)	Toxaphene-2	5.650	0.000	64109353	0	2923.819	N.D. #
24)	Toxaphene-3	6.021	7.187	56750616	451.9E6	1606.198	2234.811 #
25)	Toxaphene-4	0.000	7.187	0	451.9E6	N.D.	811.817

(f)=RT Delta > 1/2 Window (#)=Amounts differ by > 25% (m)=manual int.

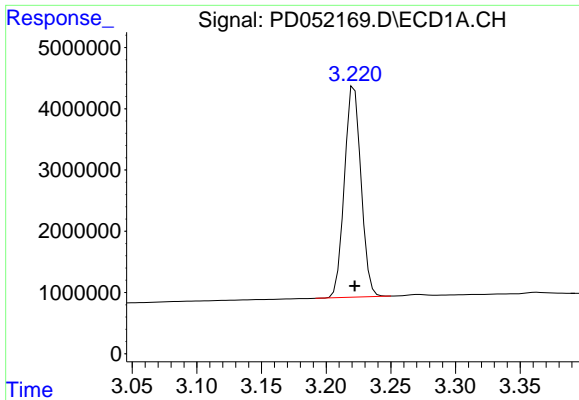
Data Path : Z:\pestpcbsrv\HPCHEM1\ECD_D\Data\PD032619\
 Data File : PD052169.D
 Signal(s) : Signal #1: ECD1A.CH Signal #2: ECD2B.CH
 Acq On : 26 Mar 2019 18:10
 Operator : AJ\SJ
 Sample : INDA332
 Misc :
 ALS Vial : 26 Sample Multiplier: 1

Integration File signal 1: autoint1.e
 Integration File signal 2: autoint2.e
 Quant Time: Mar 27 08:06:40 2019
 Quant Method : Z:\pestpcbsrv\HPCHEM1\ECD_D\Method\PD032519CLP.M
 Quant Title : GC Extractables
 QLast Update : Mon Mar 25 18:59:03 2019
 Response via : Initial Calibration
 Integrator: ChemStation 6890 Scale Mode: Large solvent peaks clipped

Volume Inj. : 1 µl
 Signal #1 Phase : ZB-MR2 Signal #2 Phase: ZB-MR1
 Signal #1 Info : 30M x 0.32mm x0.2 Signal #2 Info : 30M x 0.32mm x 0.50µm

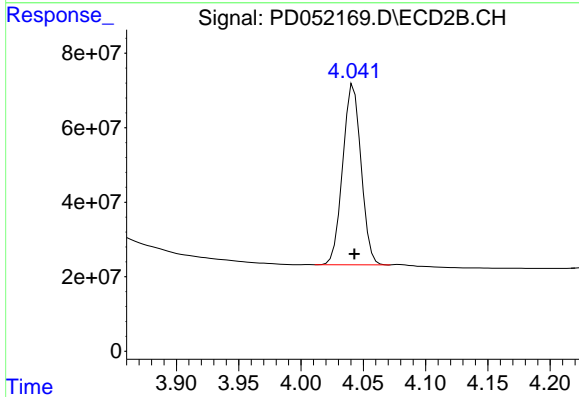


Instrument :
 ECD_D
 ClientSampleId :
 INDA332

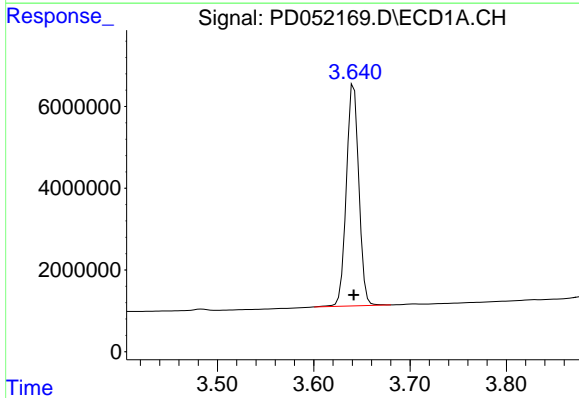


#1 Tetrachloro-m-xylene
 R.T.: 3.222 min
 Delta R.T.: 0.000 min
 Response: 30691452
 Conc: 21.62 ng/ml

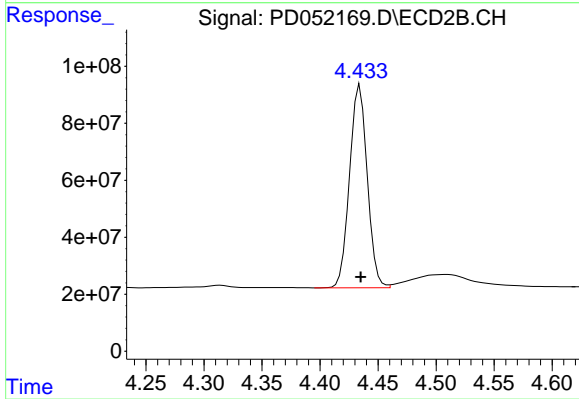
Instrument :
 ECD_D
 ClientSampled :
 INDA332



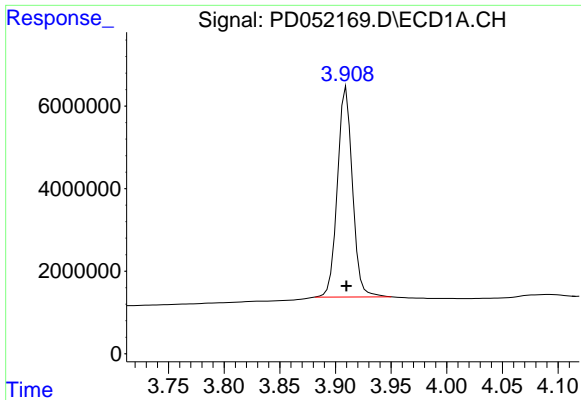
#1 Tetrachloro-m-xylene
 R.T.: 4.042 min
 Delta R.T.: 0.000 min
 Response: 499169918
 Conc: 17.16 ng/ml



#2 alpha-BHC
 R.T.: 3.642 min
 Delta R.T.: 0.000 min
 Response: 48537105
 Conc: 21.27 ng/ml



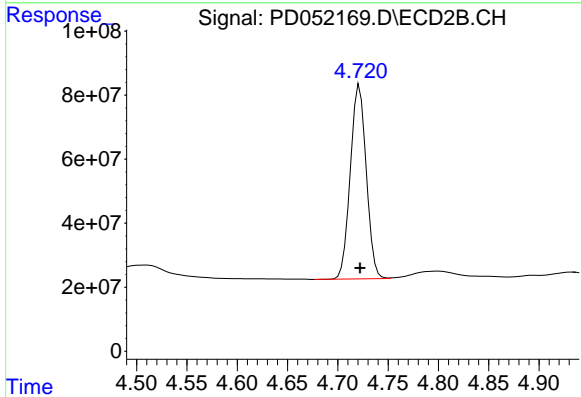
#2 alpha-BHC
 R.T.: 4.434 min
 Delta R.T.: 0.000 min
 Response: 754624846
 Conc: 17.26 ng/ml



#3 gamma-BHC (Lindane)

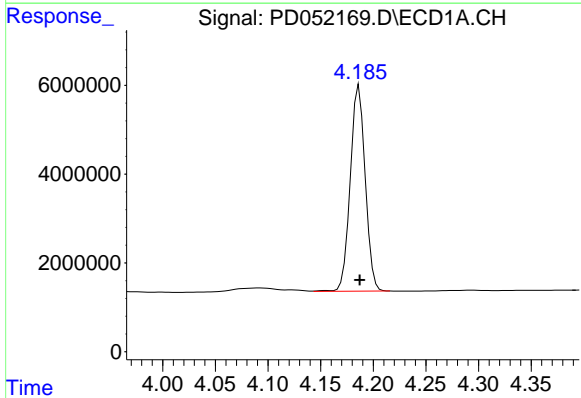
R.T.: 3.910 min
 Delta R.T.: 0.000 min
 Response: 47903799
 Conc: 21.38 ng/ml

Instrument :
 ECD_D
 ClientSampled :
 INDA332



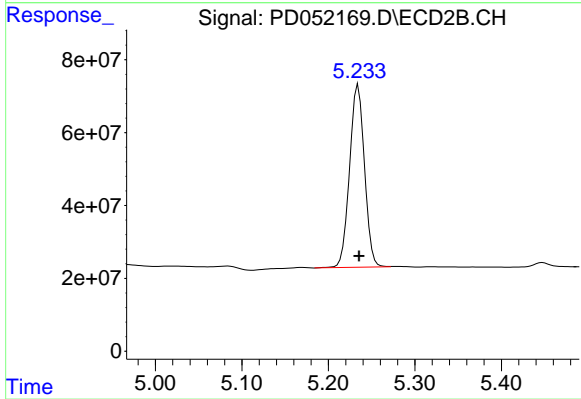
#3 gamma-BHC (Lindane)

R.T.: 4.722 min
 Delta R.T.: 0.000 min
 Response: 665504154
 Conc: 16.75 ng/ml



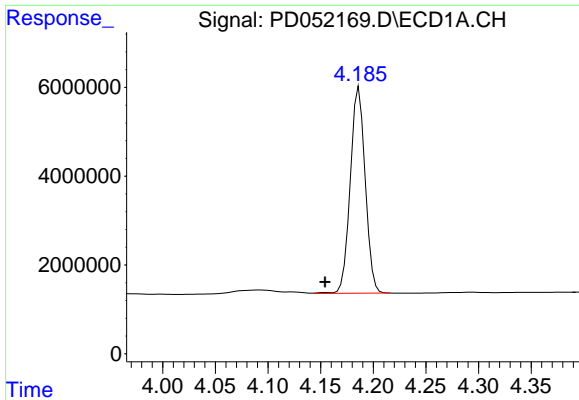
#4 Heptachlor

R.T.: 4.187 min
 Delta R.T.: 0.000 min
 Response: 45940310
 Conc: 20.89 ng/ml



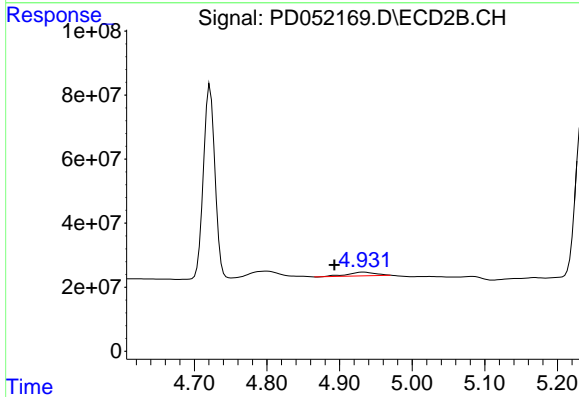
#4 Heptachlor

R.T.: 5.234 min
 Delta R.T.: 0.000 min
 Response: 599364850
 Conc: 14.94 ng/ml

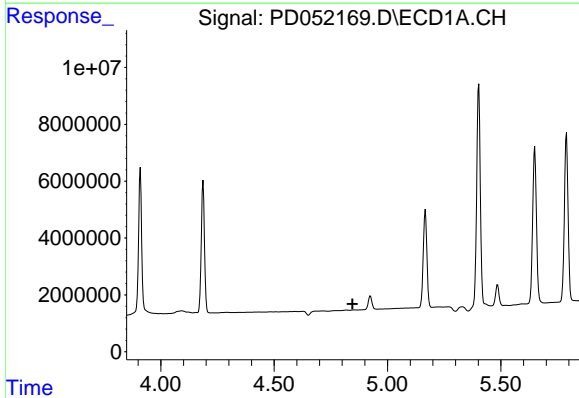


#6 beta-BHC
 R.T.: 4.187 min
 Delta R.T.: 0.032 min
 Response: 45940310
 Conc: 48.00 ng/ml

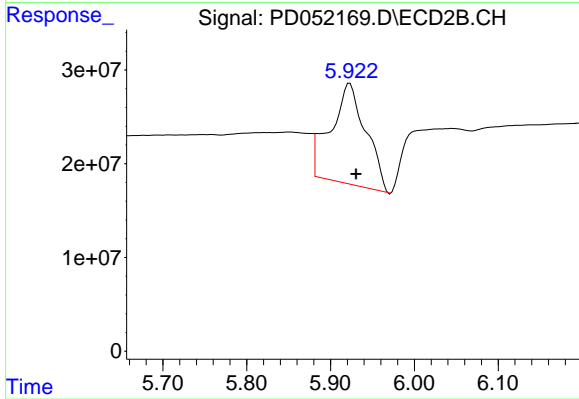
Instrument :
 ECD_D
 ClientSampled :
 INDA332



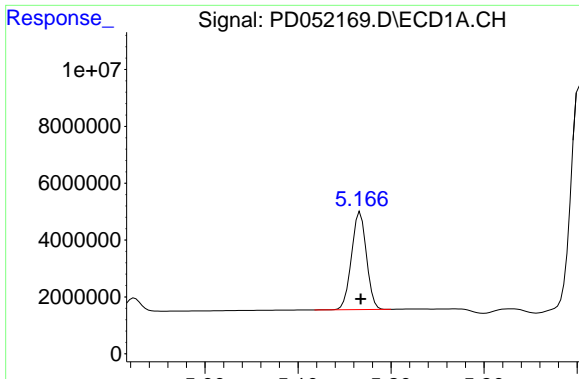
#6 beta-BHC
 R.T.: 4.933 min
 Delta R.T.: 0.040 min
 Response: 30815519
 Conc: 1.68 ng/ml



#8 Heptachlor epoxide
 R.T.: 0.000 min
 Exp R.T. : 4.846 min
 Response: 0
 Conc: N.D.

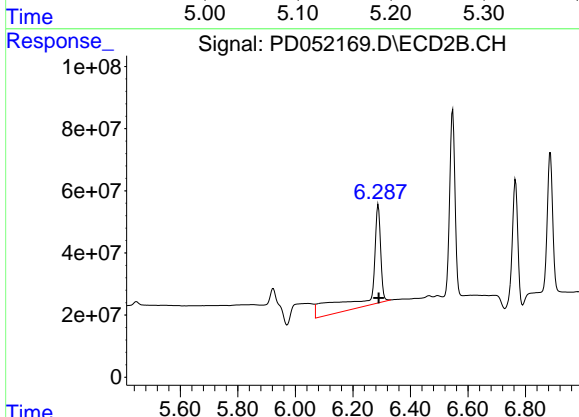


#8 Heptachlor epoxide
 R.T.: 5.923 min
 Delta R.T.: -0.008 min
 Response: 314137324
 Conc: 9.22 ng/ml

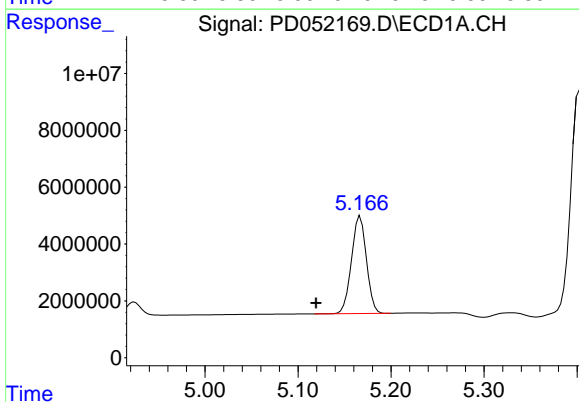


#9 Endosulfan I
 R.T.: 5.167 min
 Delta R.T.: 0.000 min
 Response: 38310097
 Conc: 19.70 ng/ml

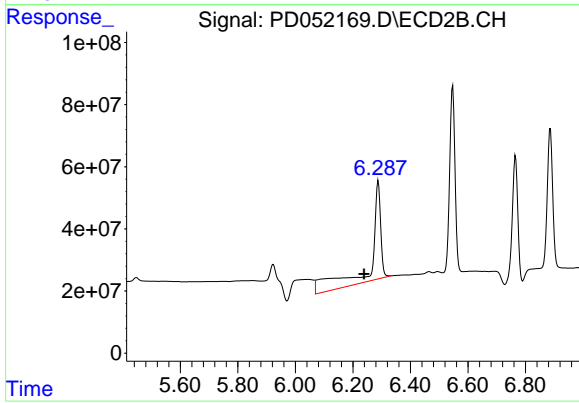
Instrument :
 ECD_D
 ClientSampled :
 INDA332



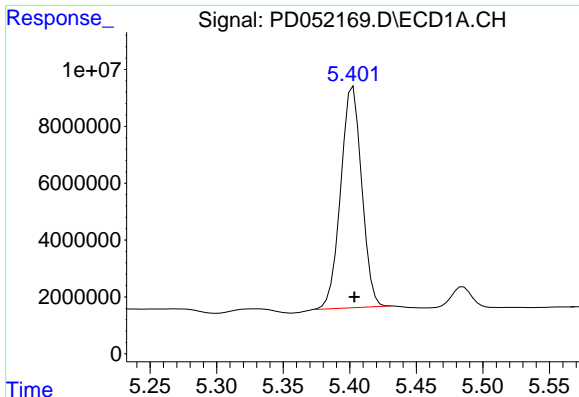
#9 Endosulfan I
 R.T.: 6.288 min
 Delta R.T.: -0.001 min
 Response: 772526192
 Conc: 24.64 ng/ml



#11 cis-Chlordane
 R.T.: 5.167 min
 Delta R.T.: 0.048 min
 Response: 38310097
 Conc: 19.00 ng/ml



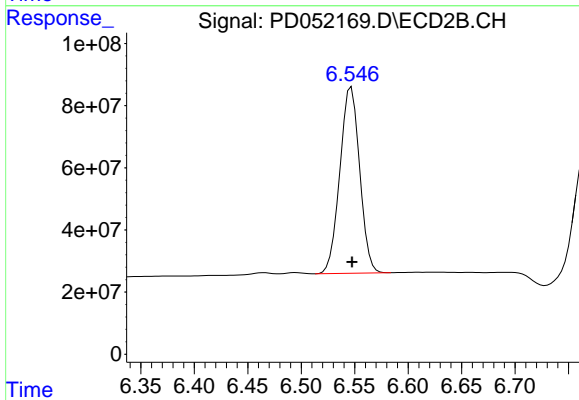
#11 cis-Chlordane
 R.T.: 6.288 min
 Delta R.T.: 0.050 min
 Response: 772526192
 Conc: 23.79 ng/ml



#13 Dieldrin

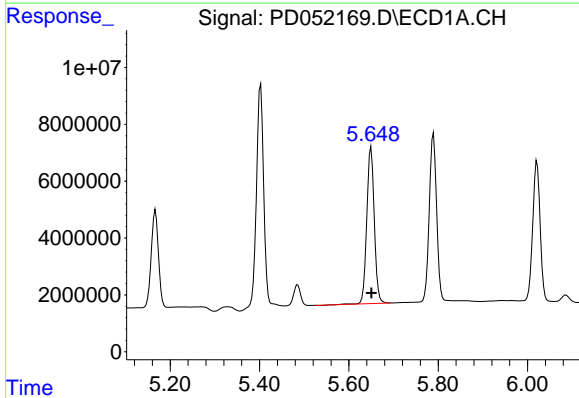
R.T.: 5.403 min
 Delta R.T.: -0.001 min
 Response: 85687947
 Conc: 39.49 ng/ml

Instrument :
 ECD_D
 ClientSampleId :
 INDA332



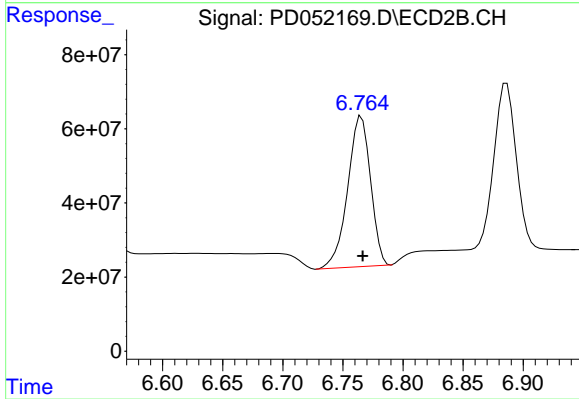
#13 Dieldrin

R.T.: 6.547 min
 Delta R.T.: 0.000 min
 Response: 772583211
 Conc: 24.79 ng/ml



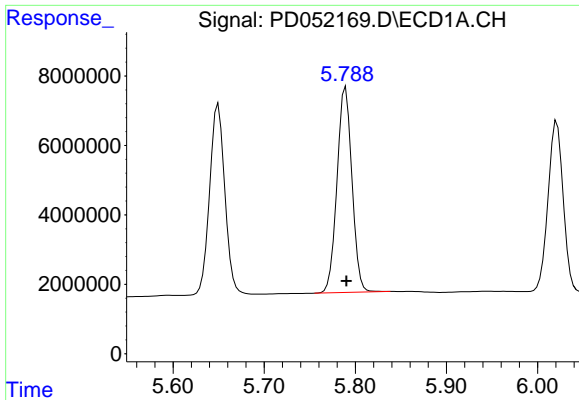
#14 Endrin

R.T.: 5.650 min
 Delta R.T.: -0.001 min
 Response: 64109353
 Conc: 35.97 ng/ml



#14 Endrin

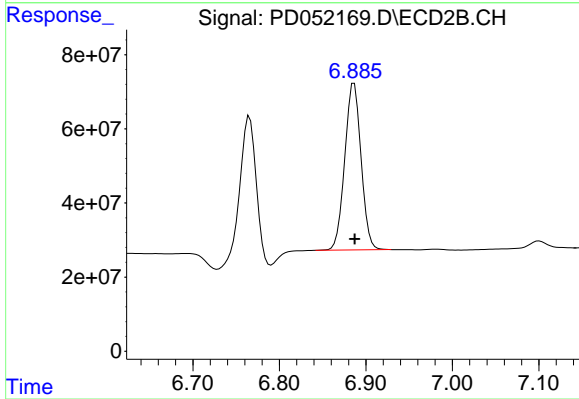
R.T.: 6.765 min
 Delta R.T.: 0.000 min
 Response: 537837952
 Conc: 23.36 ng/ml



#16 4,4'-DDD

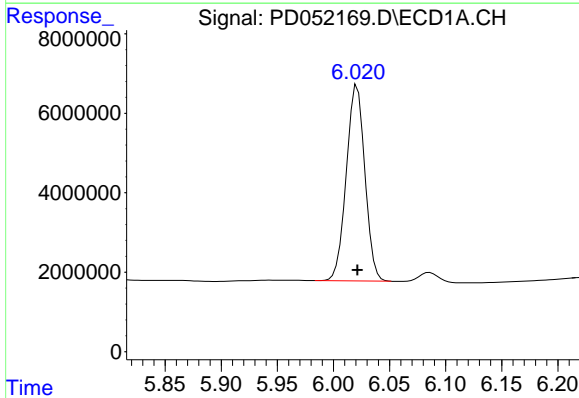
R.T.: 5.789 min
Delta R.T.: 0.000 min
Response: 67331726
Conc: 40.13 ng/ml

Instrument :
ECD_D
ClientSampled :
INDA332



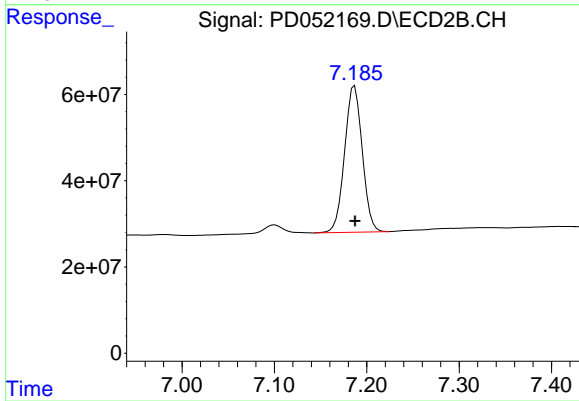
#16 4,4'-DDD

R.T.: 6.886 min
Delta R.T.: 0.000 min
Response: 586812130
Conc: 24.65 ng/ml



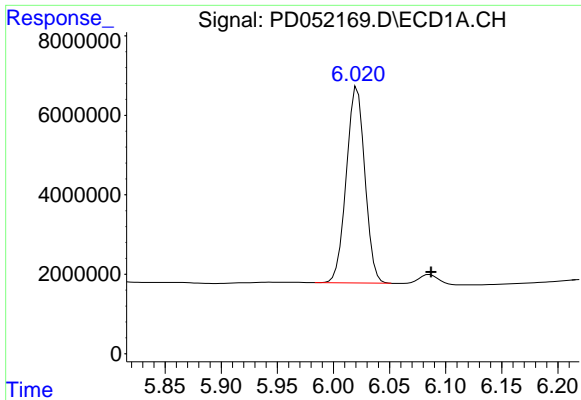
#17 4,4'-DDT

R.T.: 6.021 min
Delta R.T.: 0.000 min
Response: 56750616
Conc: 34.58 ng/ml



#17 4,4'-DDT

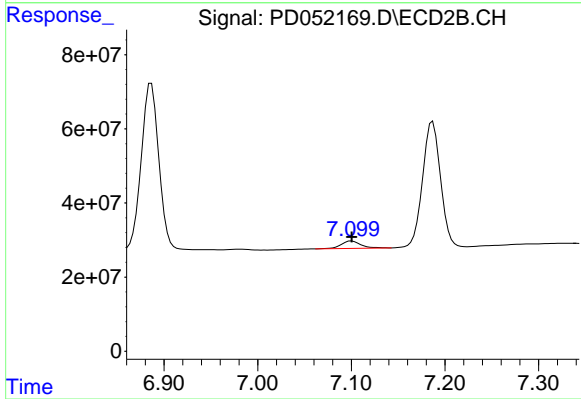
R.T.: 7.187 min
Delta R.T.: 0.000 min
Response: 451855013
Conc: 23.40 ng/ml



#18 Endrin aldehyde

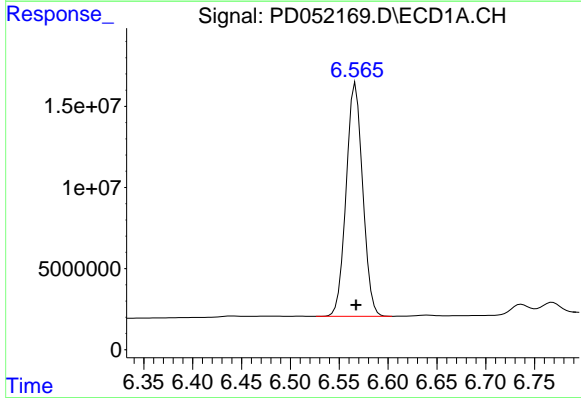
R.T.: 6.021 min
 Delta R.T.: -0.066 min
 Response: 56750616
 Conc: 37.01 ng/ml

Instrument :
 ECD_D
 ClientSampled :
 INDA332



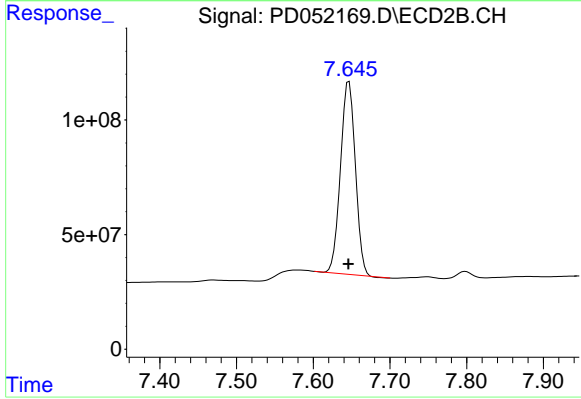
#18 Endrin aldehyde

R.T.: 7.100 min
 Delta R.T.: 0.000 min
 Response: 29443212
 Conc: 1.44 ng/ml



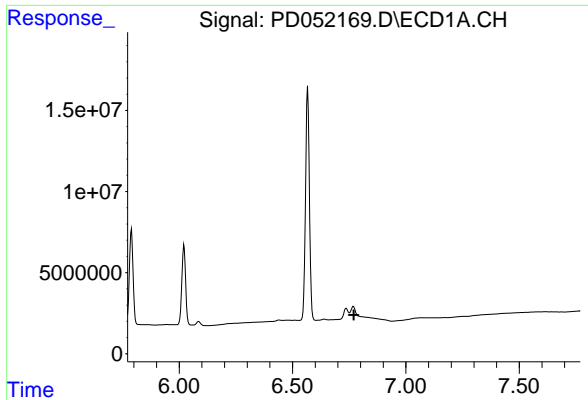
#20 Methoxychlor

R.T.: 6.567 min
 Delta R.T.: 0.000 min
 Response: 169651040
 Conc: 178.68 ng/ml



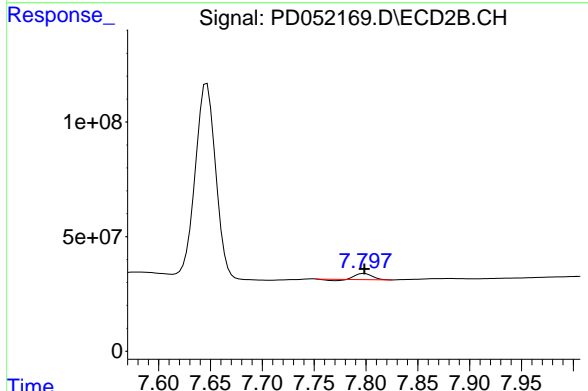
#20 Methoxychlor

R.T.: 7.647 min
 Delta R.T.: 0.000 min
 Response: 1133154052
 Conc: 121.82 ng/ml

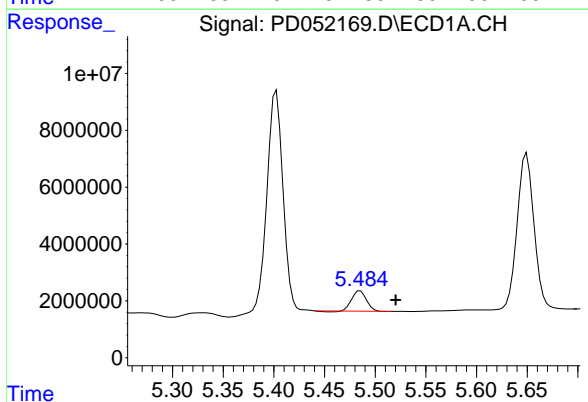


#21 Endrin ketone
 R.T.: 6.768 min
 Delta R.T.: -0.002 min
 Response: -7583856
 Conc: N.D.

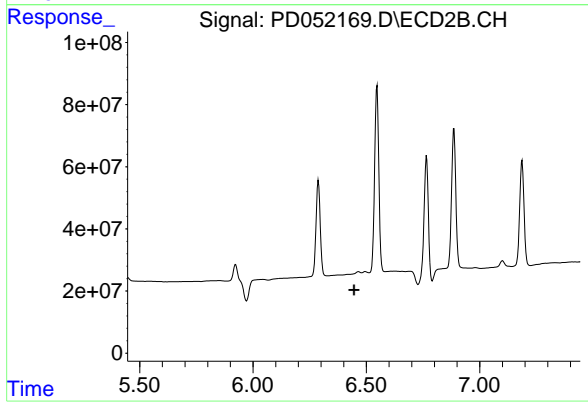
Instrument :
 ECD_D
 ClientSampleId :
 INDA332



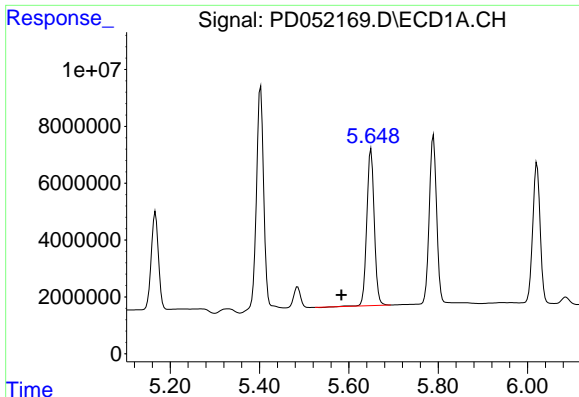
#21 Endrin ketone
 R.T.: 7.798 min
 Delta R.T.: 0.000 min
 Response: 25421903
 Conc: 1.27 ng/ml



#22 Toxaphene-1
 R.T.: 5.485 min
 Delta R.T.: -0.035 min
 Response: 7177196
 Conc: 561.18 ng/ml



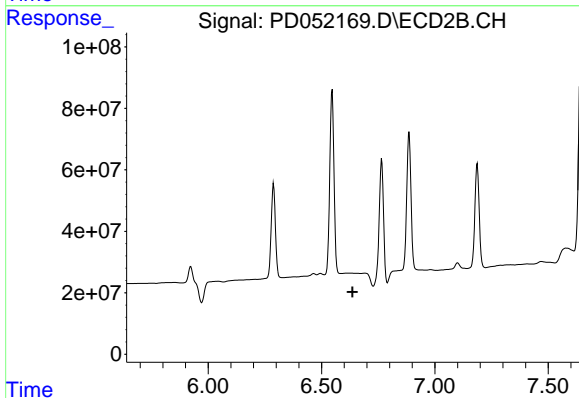
#22 Toxaphene-1
 R.T.: 0.000 min
 Exp R.T.: 6.446 min
 Response: 0
 Conc: N.D.



#23 Toxaphene-2

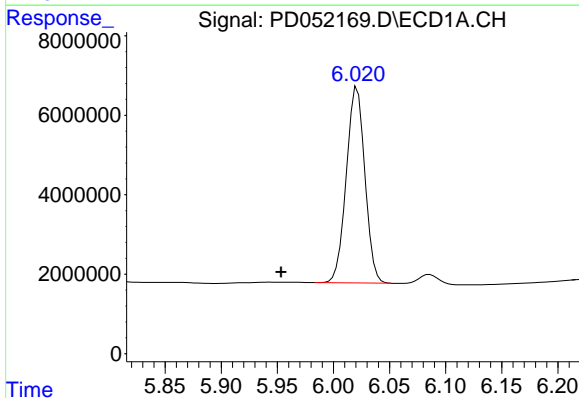
R.T.: 5.650 min
 Delta R.T.: 0.066 min
 Response: 64109353
 Conc: 2923.82 ng/ml

Instrument :
 ECD_D
 ClientSampleId :
 INDA332



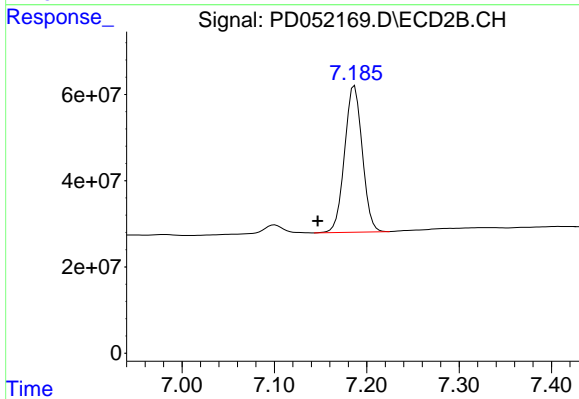
#23 Toxaphene-2

R.T.: 0.000 min
 Exp R.T. : 6.637 min
 Response: 0
 Conc: N.D.



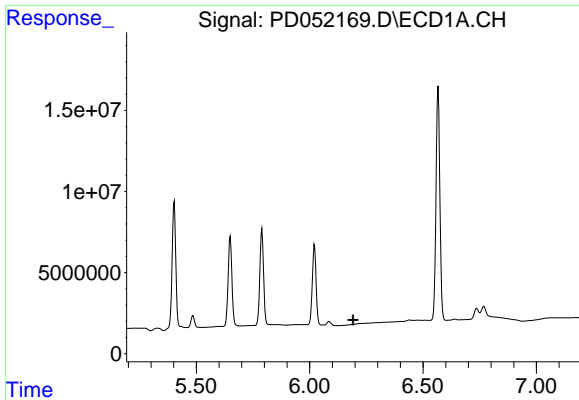
#24 Toxaphene-3

R.T.: 6.021 min
 Delta R.T.: 0.068 min
 Response: 56750616
 Conc: 1606.20 ng/ml



#24 Toxaphene-3

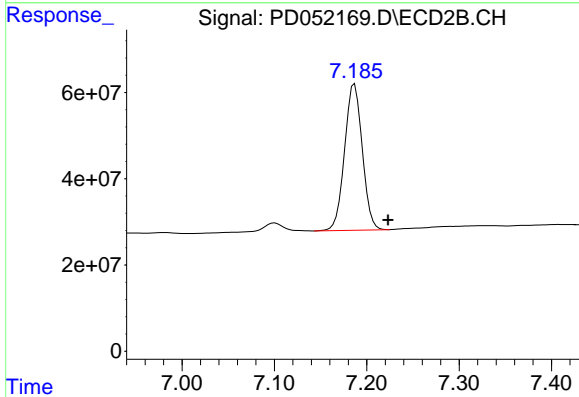
R.T.: 7.187 min
 Delta R.T.: 0.040 min
 Response: 451855013
 Conc: 2234.81 ng/ml



#25 Toxaphene-4

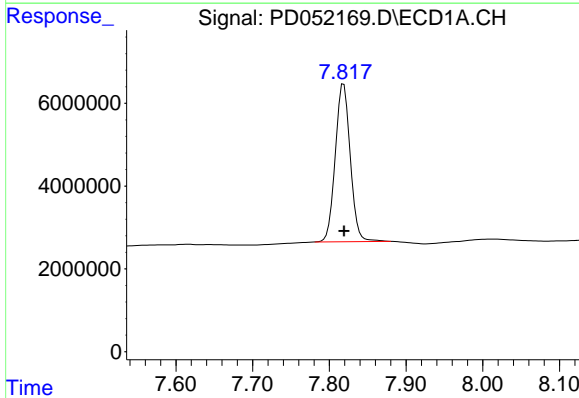
R.T.: 0.000 min
 Exp R.T.: 6.192 min
 Response: 0
 Conc: N.D.

Instrument :
 ECD_D
 ClientSampleId :
 INDA332



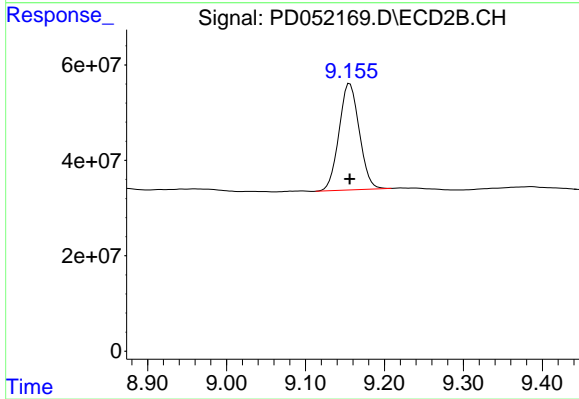
#25 Toxaphene-4

R.T.: 7.187 min
 Delta R.T.: -0.036 min
 Response: 451855013
 Conc: 811.82 ng/ml



#27 Decachlorobiphenyl

R.T.: 7.819 min
 Delta R.T.: 0.000 min
 Response: 51779974
 Conc: 33.07 ng/ml



#27 Decachlorobiphenyl

R.T.: 9.156 min
 Delta R.T.: 0.000 min
 Response: 398784718
 Conc: 25.83 ng/ml