

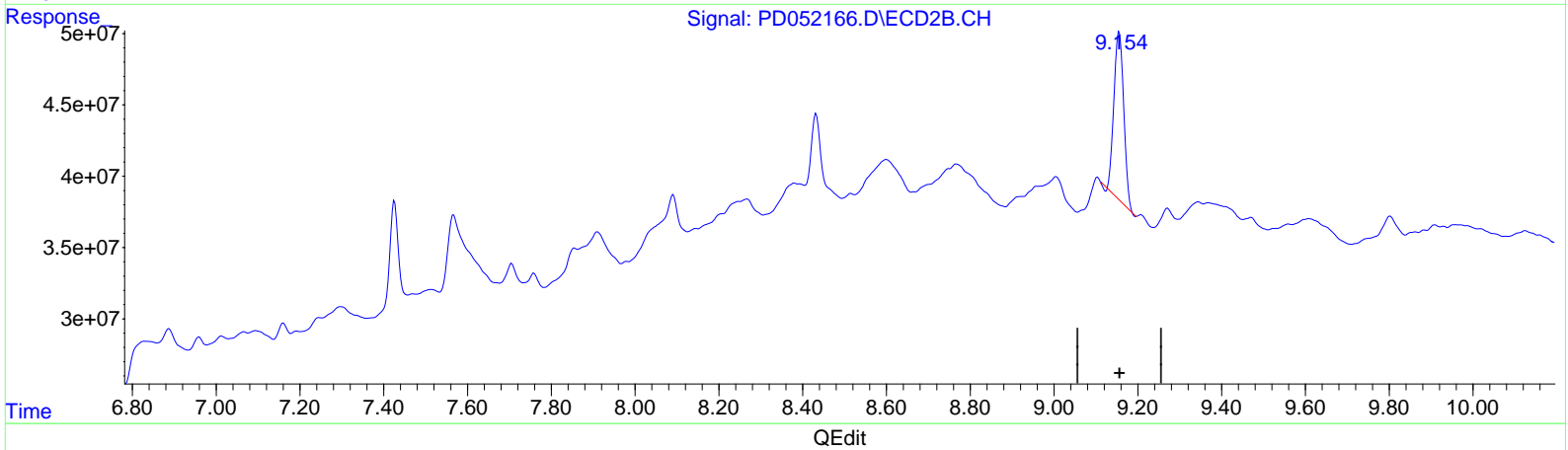
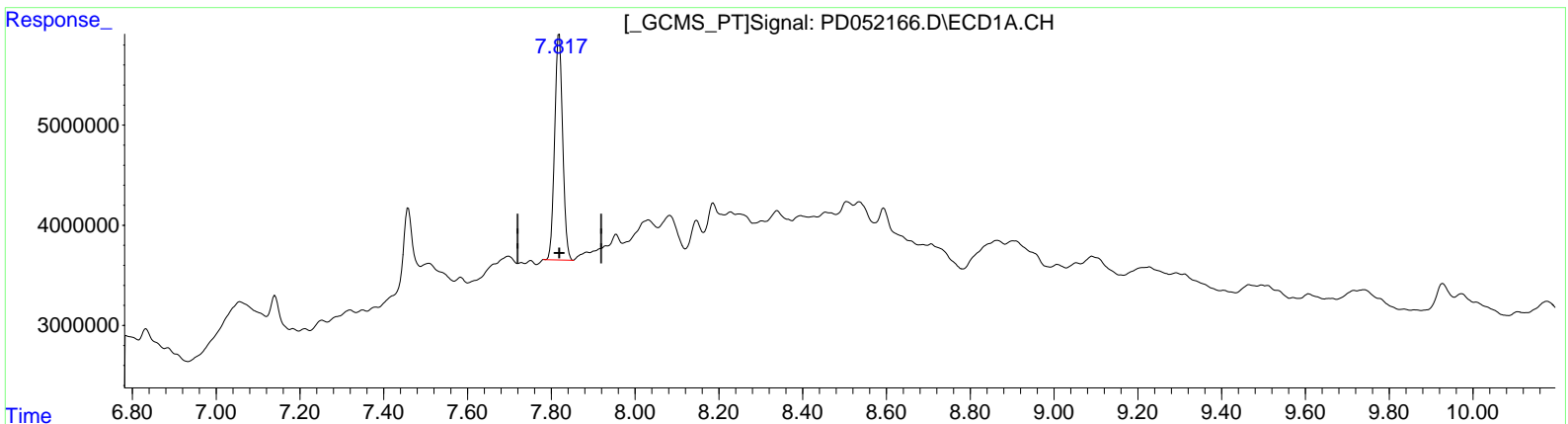
Data Path : Z:\pestpcbsrv\HPCHEM1\ECD_D\Data\PD032619\
 Data File : PD052166.D
 Signal(s) : Signal #1: ECD1A.CH Signal #2: ECD2B.CH
 Acq On : 26 Mar 2019 16:46
 Operator : AJ\SJ
 Sample : K2065-13RE
 Misc :
 ALS Vial : 47 Sample Multiplier: 1

Instrument :
 ECD_D
ClientSampled :
 BF5L6RE

Manual Integrations
APPROVED
 mohammad
 3/27/2019 11:25:27 AM

Integration File signal 1: autoint1.e
 Integration File signal 2: autoint2.e
 Quant Time: Mar 27 08:06:06 2019
 Quant Method : Z:\pestpcbsrv\HPCHEM1\ECD_D\Method\PD032519CLP.M
 Quant Title : GC Extractables
 QLast Update : Mon Mar 25 18:59:03 2019
 Response via : Initial Calibration
 Integrator: ChemStation 6890 Scale Mode: Large solvent peaks clipped

Volume Inj. : 1 µl
 Signal #1 Phase : ZB-MR2 Signal #2 Phase: ZB-MR1
 Signal #1 Info : 30M x 0.32mm x0.2 Signal #2 Info : 30M x 0.32mm x 0.50µm



(27) Decachlorobiphenyl (SA)
 7.819min 19.187 ng/ml
 response 30043779

(27) Decachlorobiphenyl #2 (SA)
 9.156min 12.431 ng/ml
 response 191900155

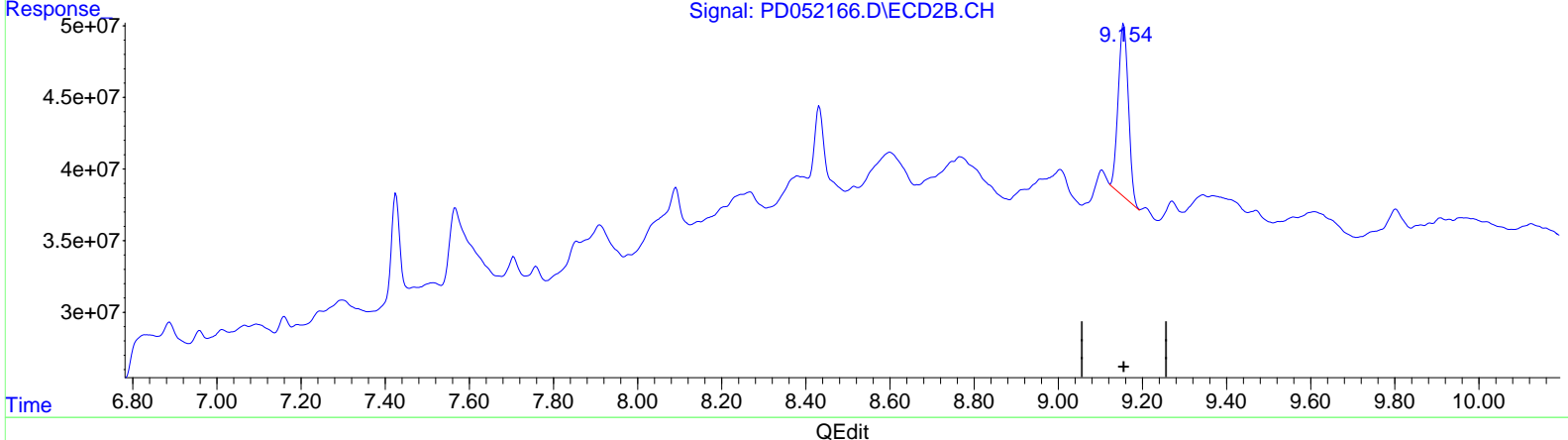
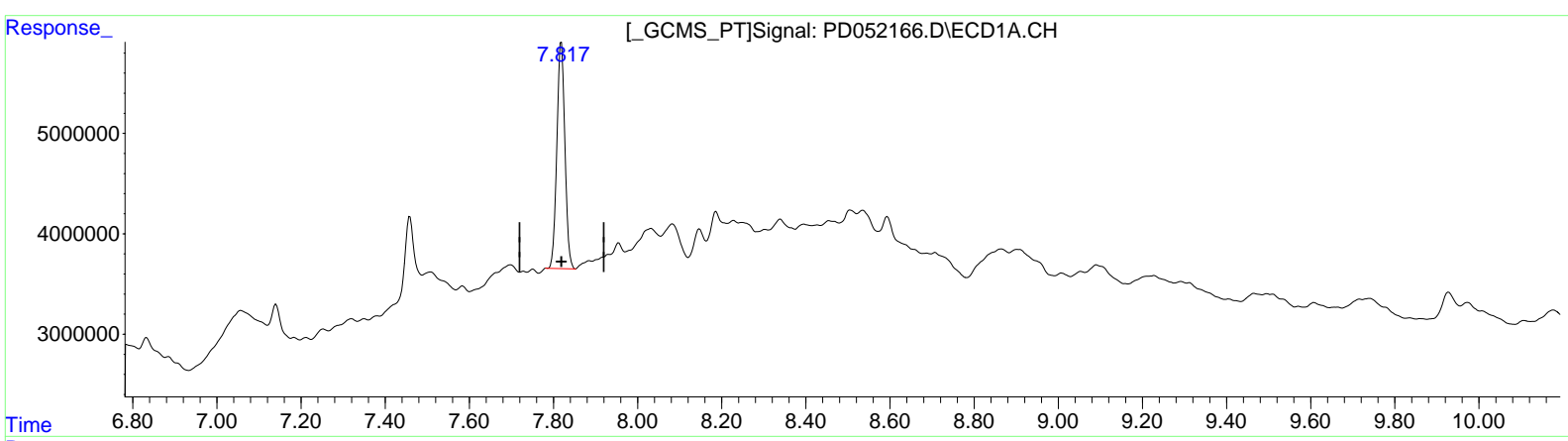
Data Path : Z:\pestpcbsrv\HPCHEM1\ECD_D\Data\PD032619\
 Data File : PD052166.D
 Signal(s) : Signal #1: ECD1A.CH Signal #2: ECD2B.CH
 Acq On : 26 Mar 2019 16:46
 Operator : AJ\SJ
 Sample : K2065-13RE
 Misc :
 ALS Vial : 47 Sample Multiplier: 1

Instrument :
 ECD_D
ClientSampled :
 BF5L6RE

Manual Integrations
APPROVED
 mohammad
 3/27/2019 11:25:27 AM

Integration File signal 1: autoint1.e
 Integration File signal 2: autoint2.e
 Quant Time: Mar 27 08:06:06 2019
 Quant Method : Z:\pestpcbsrv\HPCHEM1\ECD_D\Method\PD032519CLP.M
 Quant Title : GC Extractables
 QLast Update : Mon Mar 25 18:59:03 2019
 Response via : Initial Calibration
 Integrator: ChemStation 6890 Scale Mode: Large solvent peaks clipped

Volume Inj. : 1 µl
 Signal #1 Phase : ZB-MR2 Signal #2 Phase: ZB-MR1
 Signal #1 Info : 30M x 0.32mm x0.2 Signal #2 Info : 30M x 0.32mm x 0.50µm



(27) Decachlorobiphenyl (SA)
 7.819min 19.187 ng/ml
 response 30043779

(27) Decachlorobiphenyl #2 (SA)
 9.154min 13.121 ng/ml m
 response 202540926

Data Path : Z:\pestpcbsrv\HPCHEM1\ECD_D\Data\PD032619\
 Data File : PD052166.D
 Signal(s) : Signal #1: ECD1A.CH Signal #2: ECD2B.CH
 Acq On : 26 Mar 2019 16:46
 Operator : AJ\SJ
 Sample : K2065-13RE
 Misc :
 ALS Vial : 47 Sample Multiplier: 1

Instrument :
 ECD_D
Client Sampled :
 BF5L6RE

Integration File signal 1: autoint1.e
 Integration File signal 2: autoint2.e
 Quant Time: Mar 27 08:06:06 2019
 Quant Method : Z:\pestpcbsrv\HPCHEM1\ECD_D\Method\PD032519CLP.M
 Quant Title : GC Extractables
 QLast Update : Mon Mar 25 18:59:03 2019
 Response via : Initial Calibration
 Integrator: ChemStation 6890 Scale Mode: Large solvent peaks clipped

Manual Integrations
APPROVED

mohammad
 3/27/2019 11:25:27 AM

Volume Inj. : 1 µl
 Signal #1 Phase : ZB-MR2 Signal #2 Phase: ZB-MR1
 Signal #1 Info : 30M x 0.32mm x0.2 Signal #2 Info : 30M x 0.32mm x 0.50µm

Compound	RT#1	RT#2	Resp#1	Resp#2	ng/ml	ng/ml
----------	------	------	--------	--------	-------	-------

System Monitoring Compounds

1) SA Tetrachlo...	3.222	4.042	22408654	320.9E6	15.787	11.028 #
27) SA Decachlor...	7.819	9.154	30043779	202.5E6	19.187	13.121m#

→ S.J

Target Compounds

04/01/19

(f)=RT Delta > 1/2 Window (#)=Amounts differ by > 25% (m)=manual int.