

Data Path : Z:\pestpcbsrv\HPCHEM1\ECD_D\Data\PD032622\
 Data File : PD068774.D
 Signal(s) : Signal #1: ECD1A.ch Signal #2: ECD2B.ch
 Acq On : 25 Mar 2022 17:10
 Operator : AR\AJ
 Sample : PB143611BS
 Misc :
 ALS Vial : 6 Sample Multiplier: 1

Instrument :
 ECD_D
 ClientSampleId :

Integration File signal 1: autoint1.e
 Integration File signal 2: autoint2.e
 Quant Time: Mar 26 00:03:15 2022
 Quant Method : Z:\pestpcbsrv\HPCHEM1\ECD_D\Method\PD031222.M
 Quant Title : GC Extractables
 QLast Update : Mon Mar 14 03:30:32 2022
 Response via : Initial Calibration
 Integrator: ChemStation

Volume Inj. : 2 µl
 Signal #1 Phase : ZB-MR2 Signal #2 Phase: ZB-MR1
 Signal #1 Info : 30M x 0.32mm x0.2 Signal #2 Info : 30M x 0.32mm x 0.50µm

	Compound	RT#1	RT#2	Resp#1	Resp#2	ng/ml	ng/ml

System Monitoring Compounds							
1)	SA Tetrachlo...	3.455	4.175	27531750	250.0E6	22.675	26.152
28)	SA Decachlor...	8.218	9.378	31987674	157.4E6	25.319	27.774
Target Compounds							
2)	A alpha-BHC	3.895	4.572	96599799	781.7E6	53.353	56.799
3)	MA gamma-BHC...	4.179	4.863	88974278	705.7E6	53.285	56.444
4)	MA Heptachlor	4.479	5.391	87605514	683.5E6	53.176	57.509
5)	MB Aldrin	4.726	5.704	86950875	659.4E6	54.408	57.444
6)	B beta-BHC	4.430	5.026	38005726	308.2E6	51.045	56.148
7)	B delta-BHC	4.635	5.252	88850041	658.6E6	54.368	54.767
8)	Heptachlo...	5.172	6.092	80943087	563.7E6	54.125	53.977
9)	A Endosulfan I	5.510	6.455	76214606	542.0E6	54.468	57.793
10)	B gamma-Chl...	5.397	6.329	81999021	585.4E6	54.056	56.791
11)	B alpha-Chl...	5.457	6.404	80795651	568.6E6	54.057	57.105
12)	B 4,4'-DDE	5.623	6.554	76880871	541.7E6	56.197	58.457
13)	MA Dieldrin	5.754	6.714	80676001	560.0E6	55.252	57.657
14)	MA Endrin	6.013	6.934	73654600	435.7E6	55.913	56.313
15)	B Endosulfa...	6.286	7.139	67464057	430.7E6	54.129	56.985
16)	A 4,4'-DDD	6.140	7.045	65429502	424.7E6	55.485	57.513
17)	MA 4,4'-DDT	6.380	7.348	66160554	445.1E6	55.044	60.591
18)	B Endrin al...	6.456	7.263	53318549	348.2E6	53.708	57.536
19)	B Endosulfa...	6.669	7.489	69531798	426.6E6	54.372	58.005
20)	A Methoxychlor	6.932	7.802	36825852	217.4E6	53.138	59.630
21)	B Endrin ke...	7.162	7.964	79753401	445.9E6	54.174	57.543
22)	Mirex	7.346	8.431	69005271	349.2E6	58.224	63.704
25)	Chlordane-3	5.397	6.329	81999021	585.4E6	588.090	435.670 #
26)	Chlordane-4	5.457	6.404	80795651	568.6E6	682.680	365.726 #
27)	Chlordane-5	6.286	0.000	67464057	0	1350.371	N.D. #

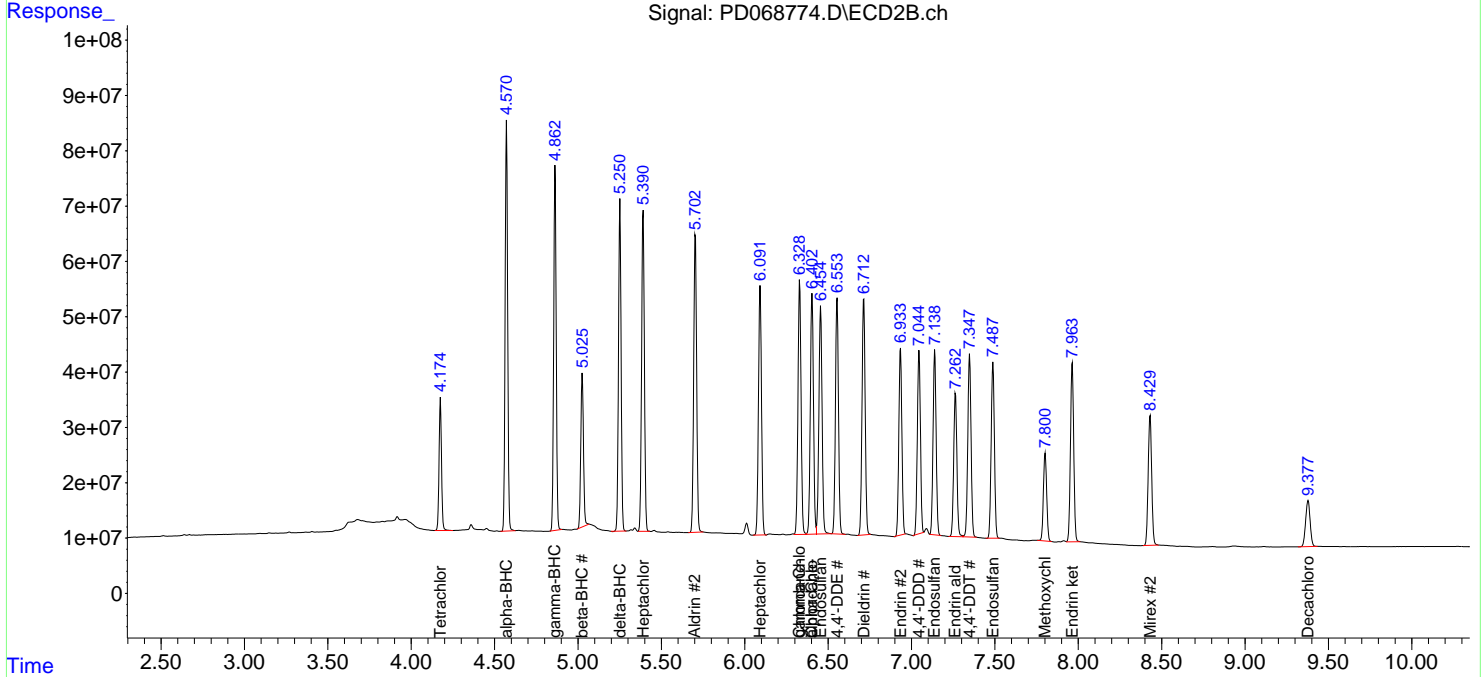
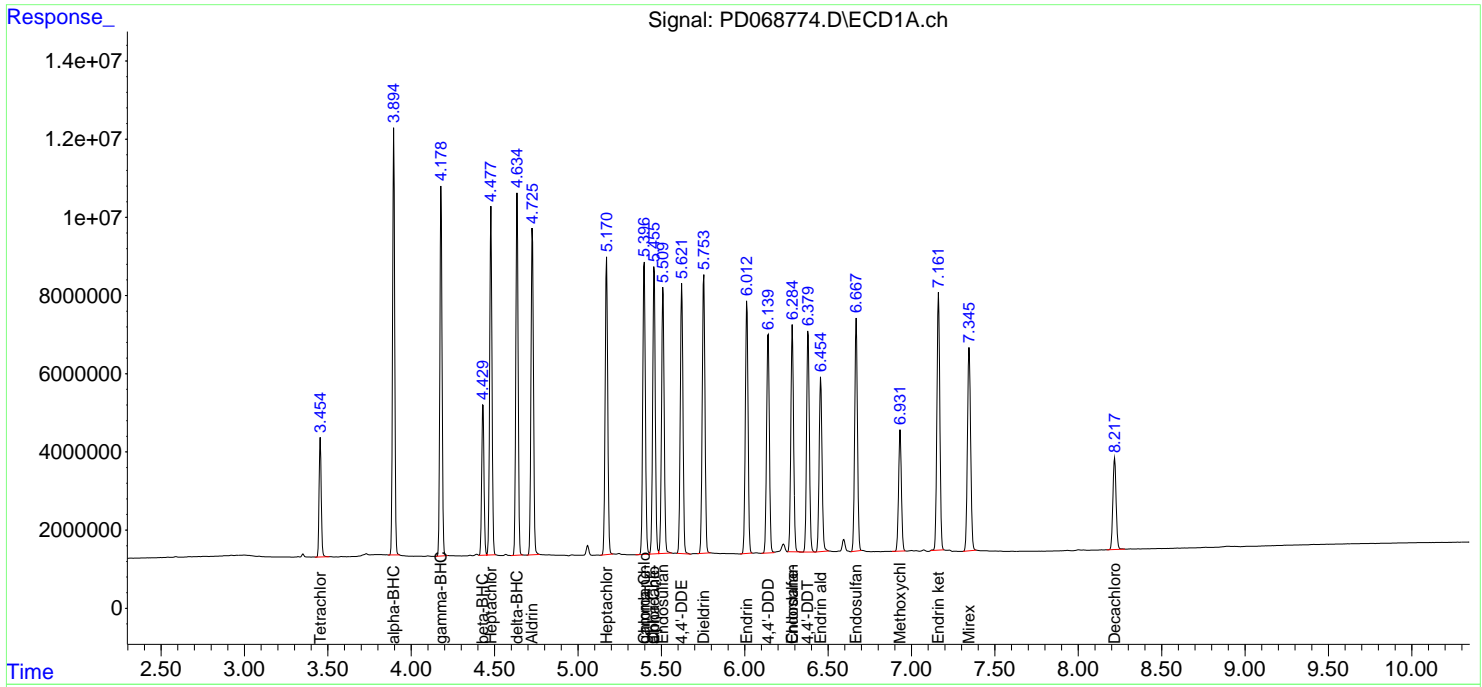
(f)=RT Delta > 1/2 Window (#)=Amounts differ by > 25% (m)=manual int.

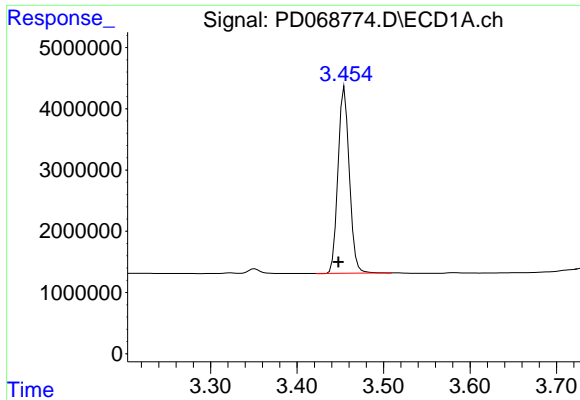
Data Path : Z:\pestpcbsrv\HPCHEM1\ECD_D\Data\PD032622\
 Data File : PD068774.D
 Signal(s) : Signal #1: ECD1A.ch Signal #2: ECD2B.ch
 Acq On : 25 Mar 2022 17:10
 Operator : AR\AJ
 Sample : PB143611BS
 Misc :
 ALS Vial : 6 Sample Multiplier: 1

Instrument :
 ECD_D
 ClientSampleId :

Integration File signal 1: autoint1.e
 Integration File signal 2: autoint2.e
 Quant Time: Mar 26 00:03:15 2022
 Quant Method : Z:\pestpcbsrv\HPCHEM1\ECD_D\Method\PD031222.M
 Quant Title : GC Extractables
 QLast Update : Mon Mar 14 03:30:32 2022
 Response via : Initial Calibration
 Integrator: ChemStation

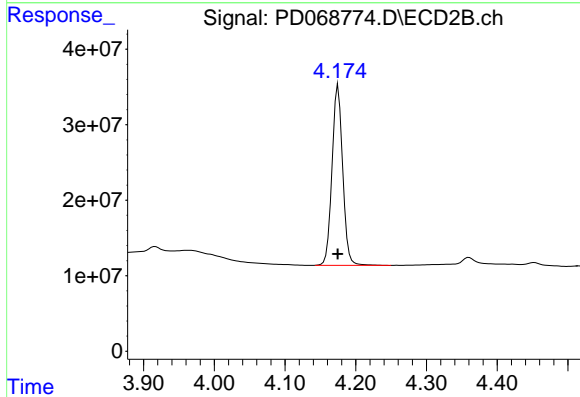
Volume Inj. : 2 µl
 Signal #1 Phase : ZB-MR2 Signal #2 Phase: ZB-MR1
 Signal #1 Info : 30M x 0.32mm x0.2 Signal #2 Info : 30M x 0.32mm x 0.50µm



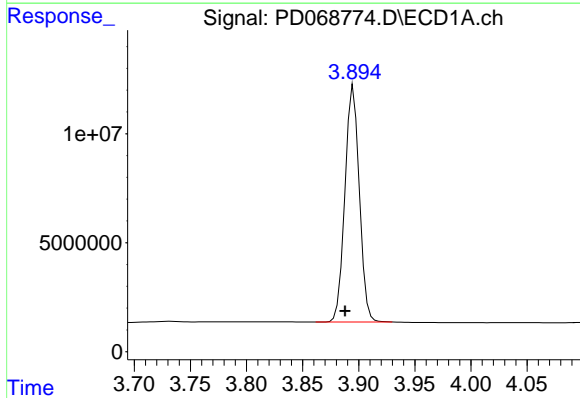


#1 Tetrachloro-m-xylene
 R.T.: 3.455 min
 Delta R.T.: 0.007 min
 Response: 27531750
 Conc: 22.68 ng/ml

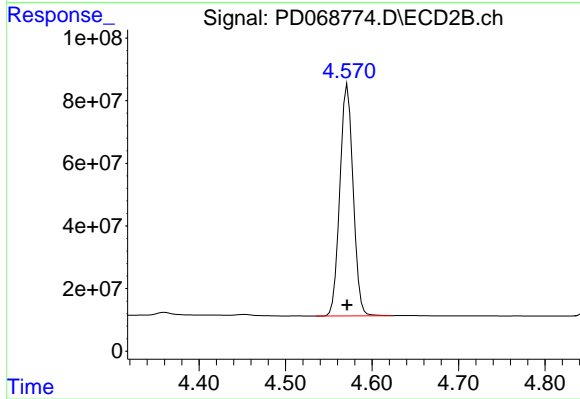
Instrument :
 ECD_D
 ClientSampleId :



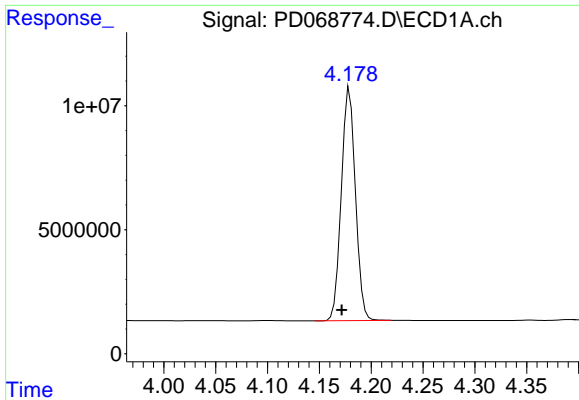
#1 Tetrachloro-m-xylene
 R.T.: 4.175 min
 Delta R.T.: 0.000 min
 Response: 250035661
 Conc: 26.15 ng/ml



#2 alpha-BHC
 R.T.: 3.895 min
 Delta R.T.: 0.008 min
 Response: 96599799
 Conc: 53.35 ng/ml



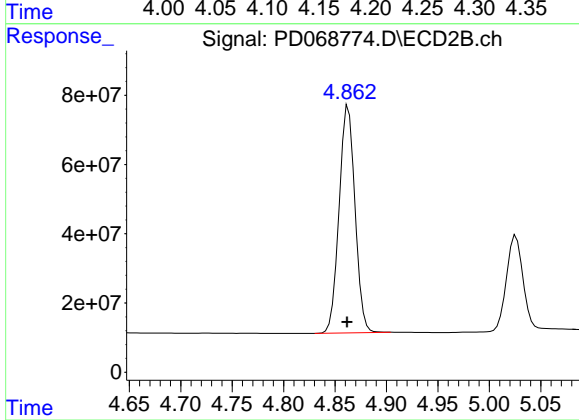
#2 alpha-BHC
 R.T.: 4.572 min
 Delta R.T.: 0.000 min
 Response: 781709271
 Conc: 56.80 ng/ml



#3 gamma-BHC (Lindane)

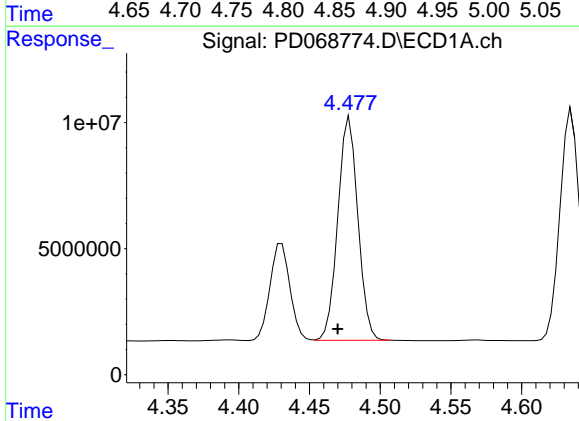
R.T.: 4.179 min
 Delta R.T.: 0.008 min
 Response: 88974278
 Conc: 53.29 ng/ml

Instrument :
 ECD_D
 ClientSampleId :



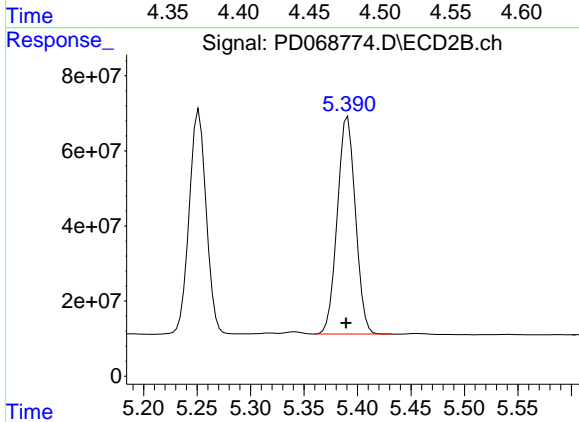
#3 gamma-BHC (Lindane)

R.T.: 4.863 min
 Delta R.T.: 0.001 min
 Response: 705725285
 Conc: 56.44 ng/ml



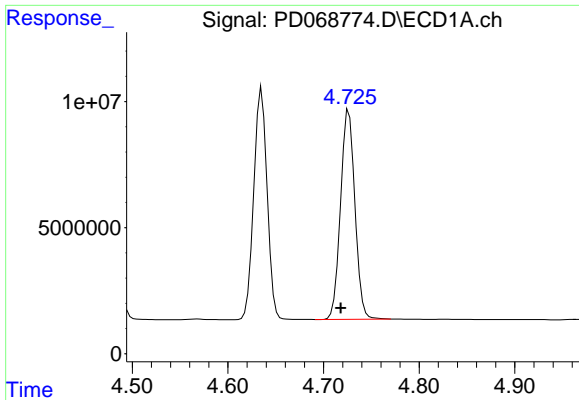
#4 Heptachlor

R.T.: 4.479 min
 Delta R.T.: 0.009 min
 Response: 87605514
 Conc: 53.18 ng/ml



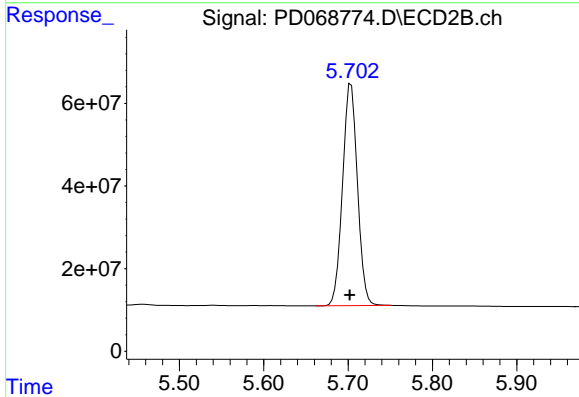
#4 Heptachlor

R.T.: 5.391 min
 Delta R.T.: 0.002 min
 Response: 683453552
 Conc: 57.51 ng/ml

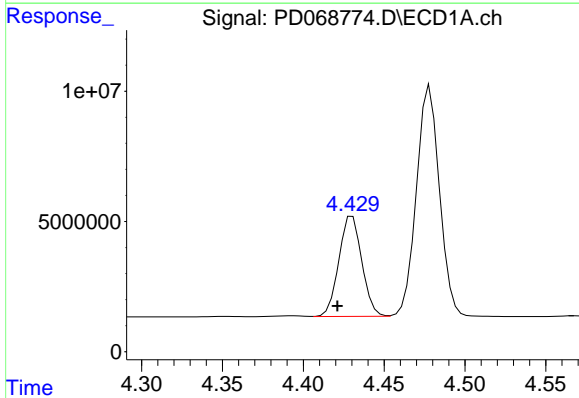


#5 Aldrin
 R.T.: 4.726 min
 Delta R.T.: 0.009 min
 Response: 86950875
 Conc: 54.41 ng/ml

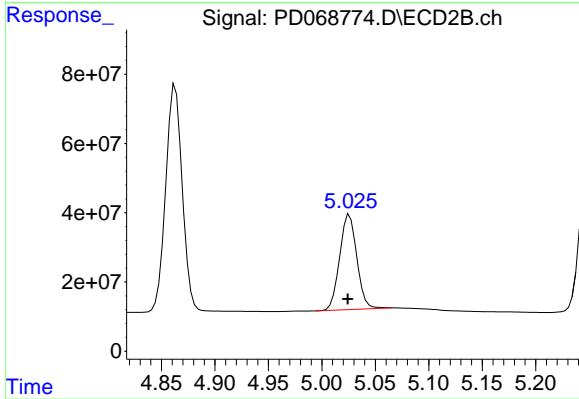
Instrument :
 ECD_D
 ClientSampleId :



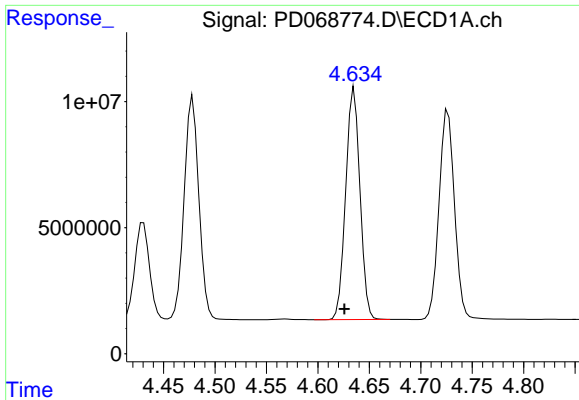
#5 Aldrin
 R.T.: 5.704 min
 Delta R.T.: 0.002 min
 Response: 659388556
 Conc: 57.44 ng/ml



#6 beta-BHC
 R.T.: 4.430 min
 Delta R.T.: 0.009 min
 Response: 38005726
 Conc: 51.04 ng/ml



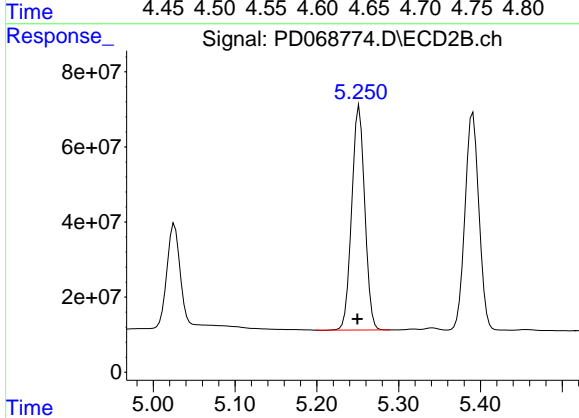
#6 beta-BHC
 R.T.: 5.026 min
 Delta R.T.: 0.002 min
 Response: 308246956
 Conc: 56.15 ng/ml



#7 delta-BHC

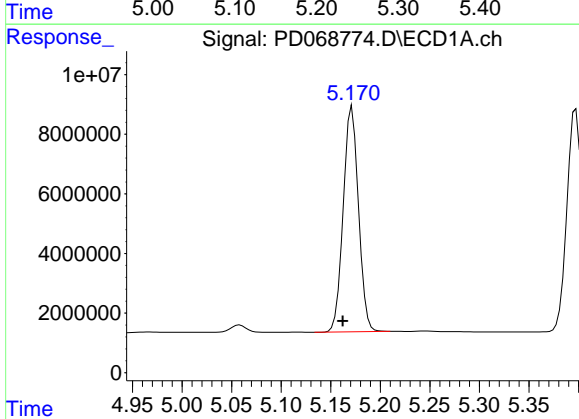
R.T.: 4.635 min
 Delta R.T.: 0.010 min
 Response: 88850041
 Conc: 54.37 ng/ml

Instrument :
 ECD_D
 ClientSampleId :



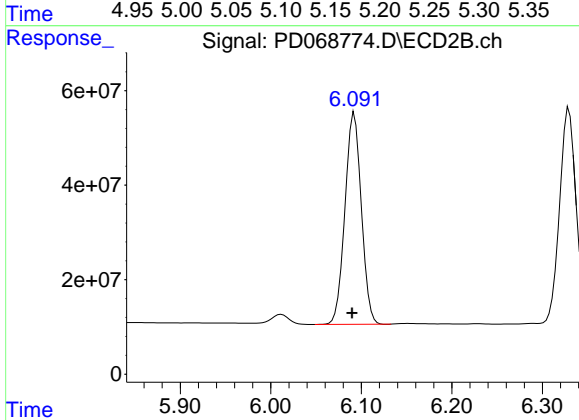
#7 delta-BHC

R.T.: 5.252 min
 Delta R.T.: 0.002 min
 Response: 658615864
 Conc: 54.77 ng/ml



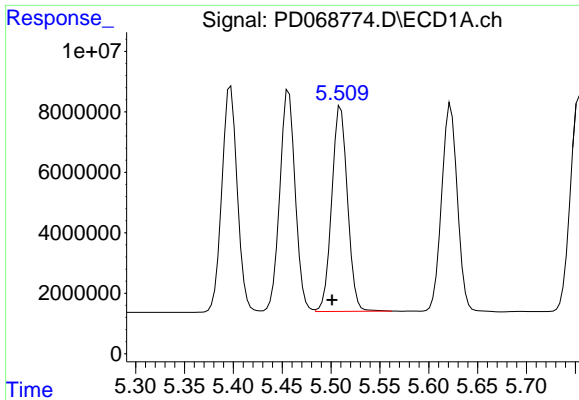
#8 Heptachlor epoxide

R.T.: 5.172 min
 Delta R.T.: 0.010 min
 Response: 80943087
 Conc: 54.12 ng/ml



#8 Heptachlor epoxide

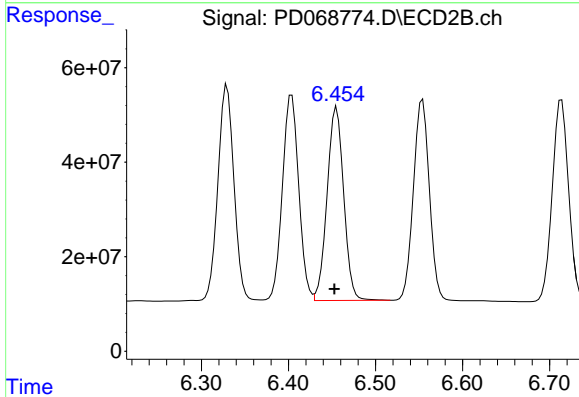
R.T.: 6.092 min
 Delta R.T.: 0.002 min
 Response: 563671418
 Conc: 53.98 ng/ml



#9 Endosulfan I

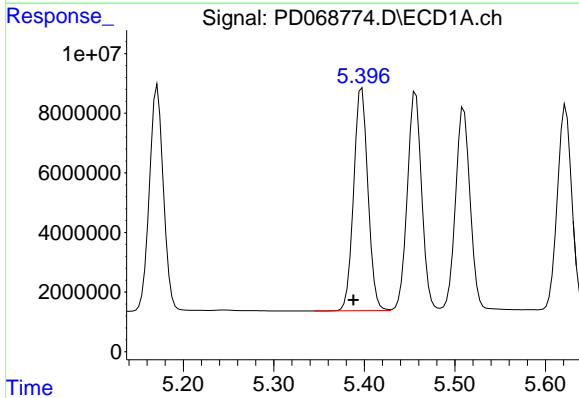
R.T.: 5.510 min
 Delta R.T.: 0.009 min
 Response: 76214606
 Conc: 54.47 ng/ml

Instrument :
 ECD_D
 ClientSampleId :



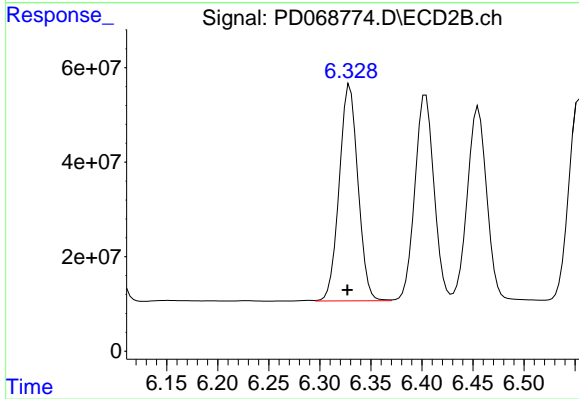
#9 Endosulfan I

R.T.: 6.455 min
 Delta R.T.: 0.003 min
 Response: 541994604
 Conc: 57.79 ng/ml



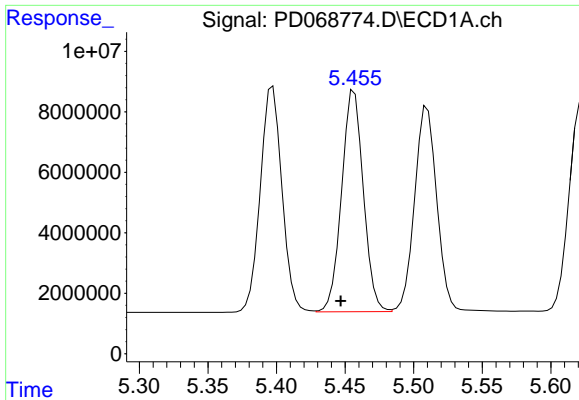
#10 gamma-Chlordane

R.T.: 5.397 min
 Delta R.T.: 0.009 min
 Response: 81999021
 Conc: 54.06 ng/ml



#10 gamma-Chlordane

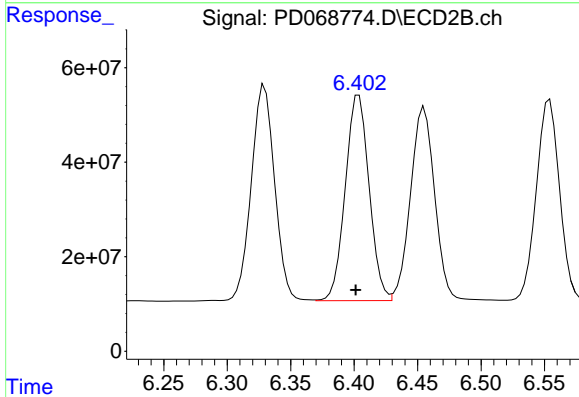
R.T.: 6.329 min
 Delta R.T.: 0.002 min
 Response: 585358610
 Conc: 56.79 ng/ml



#11 alpha-Chlordane

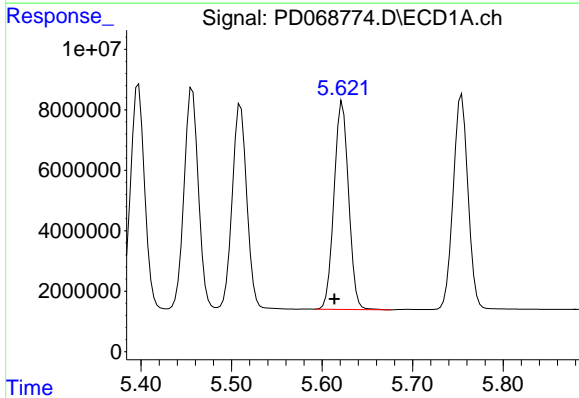
R.T.: 5.457 min
Delta R.T.: 0.010 min
Response: 80795651
Conc: 54.06 ng/ml

Instrument :
ECD_D
ClientSampleId :



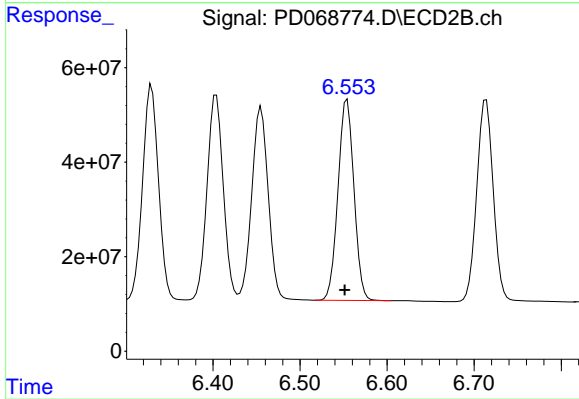
#11 alpha-Chlordane

R.T.: 6.404 min
Delta R.T.: 0.002 min
Response: 568553154
Conc: 57.11 ng/ml



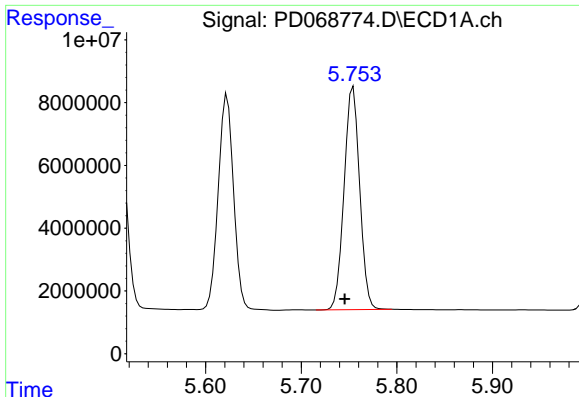
#12 4,4'-DDE

R.T.: 5.623 min
Delta R.T.: 0.009 min
Response: 76880871
Conc: 56.20 ng/ml



#12 4,4'-DDE

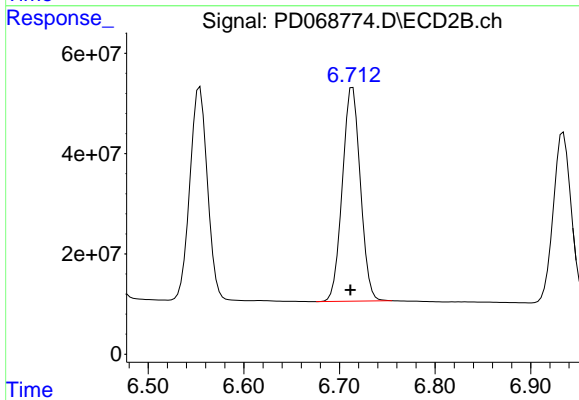
R.T.: 6.554 min
Delta R.T.: 0.003 min
Response: 541715888
Conc: 58.46 ng/ml



#13 Dieldrin

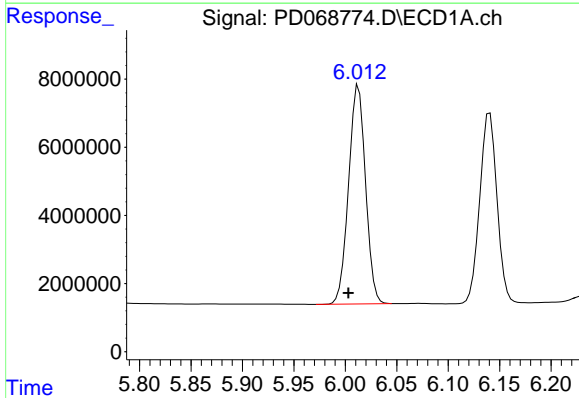
R.T.: 5.754 min
 Delta R.T.: 0.009 min
 Response: 80676001
 Conc: 55.25 ng/ml

Instrument :
 ECD_D
 ClientSampleId :



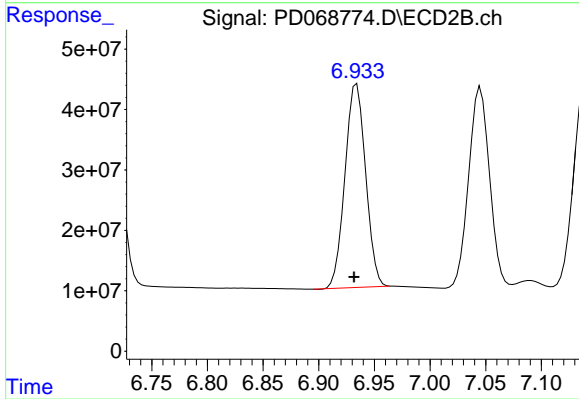
#13 Dieldrin

R.T.: 6.714 min
 Delta R.T.: 0.002 min
 Response: 560023895
 Conc: 57.66 ng/ml



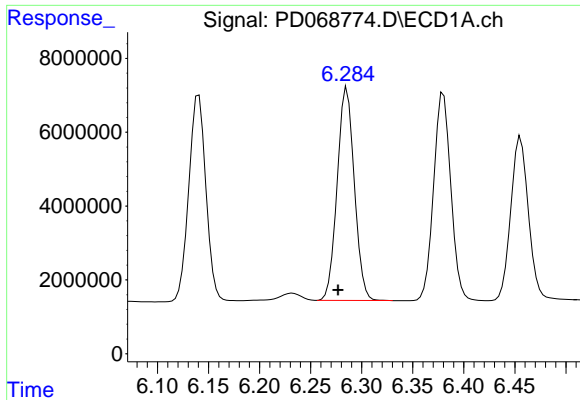
#14 Endrin

R.T.: 6.013 min
 Delta R.T.: 0.010 min
 Response: 73654600
 Conc: 55.91 ng/ml



#14 Endrin

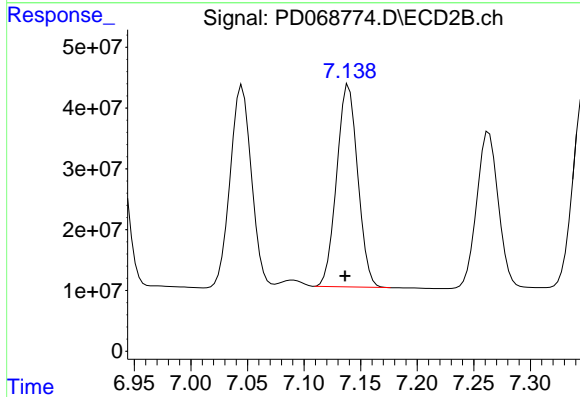
R.T.: 6.934 min
 Delta R.T.: 0.002 min
 Response: 435722915
 Conc: 56.31 ng/ml



#15 Endosulfan II

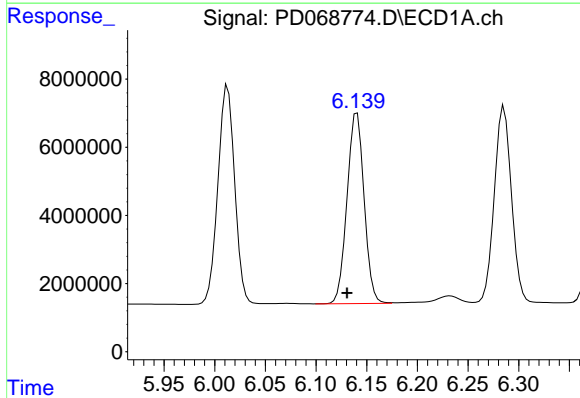
R.T.: 6.286 min
 Delta R.T.: 0.009 min
 Response: 67464057
 Conc: 54.13 ng/ml

Instrument :
 ECD_D
 ClientSampleId :



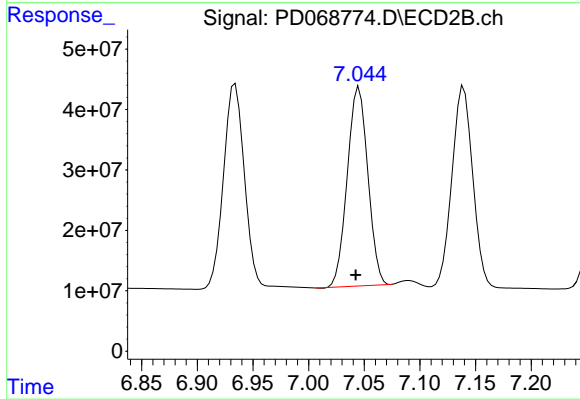
#15 Endosulfan II

R.T.: 7.139 min
 Delta R.T.: 0.003 min
 Response: 430728208
 Conc: 56.99 ng/ml



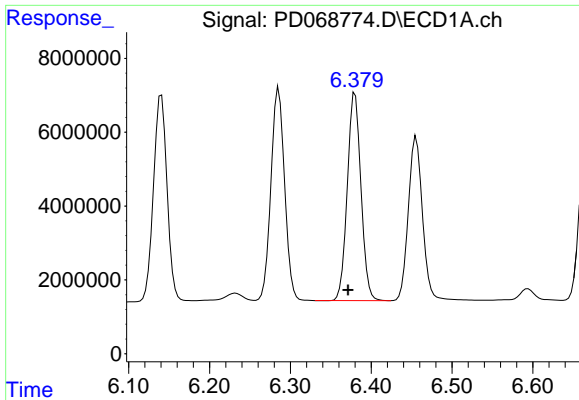
#16 4,4'-DDD

R.T.: 6.140 min
 Delta R.T.: 0.010 min
 Response: 65429502
 Conc: 55.48 ng/ml



#16 4,4'-DDD

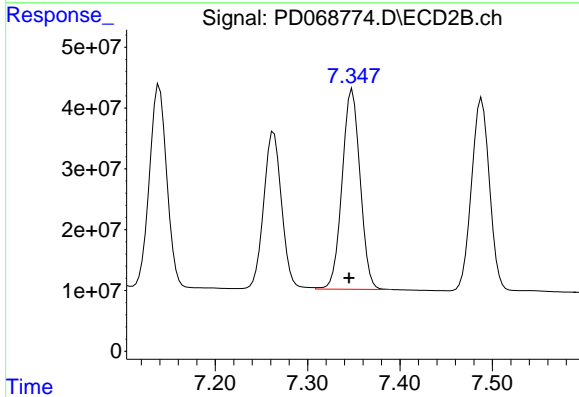
R.T.: 7.045 min
 Delta R.T.: 0.003 min
 Response: 424747824
 Conc: 57.51 ng/ml



#17 4,4'-DDT

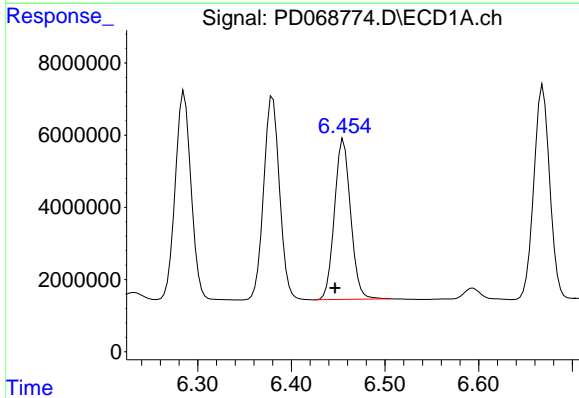
R.T.: 6.380 min
 Delta R.T.: 0.009 min
 Response: 66160554
 Conc: 55.04 ng/ml

Instrument :
 ECD_D
 ClientSampleId :



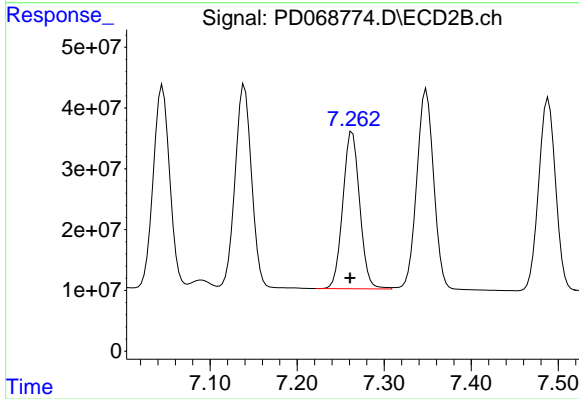
#17 4,4'-DDT

R.T.: 7.348 min
 Delta R.T.: 0.004 min
 Response: 445145181
 Conc: 60.59 ng/ml



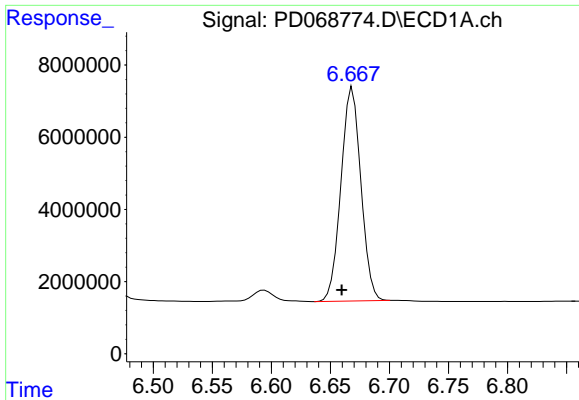
#18 Endrin aldehyde

R.T.: 6.456 min
 Delta R.T.: 0.009 min
 Response: 53318549
 Conc: 53.71 ng/ml



#18 Endrin aldehyde

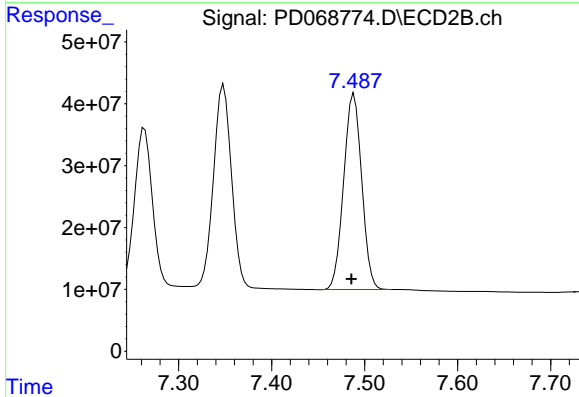
R.T.: 7.263 min
 Delta R.T.: 0.003 min
 Response: 348193670
 Conc: 57.54 ng/ml



#19 Endosulfan Sulfate

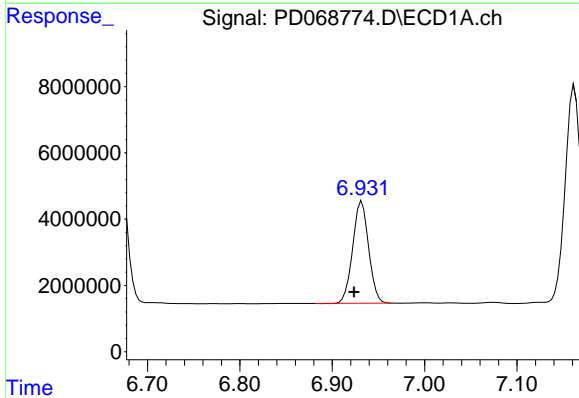
R.T.: 6.669 min
 Delta R.T.: 0.009 min
 Response: 69531798
 Conc: 54.37 ng/ml

Instrument :
 ECD_D
 ClientSampleId :



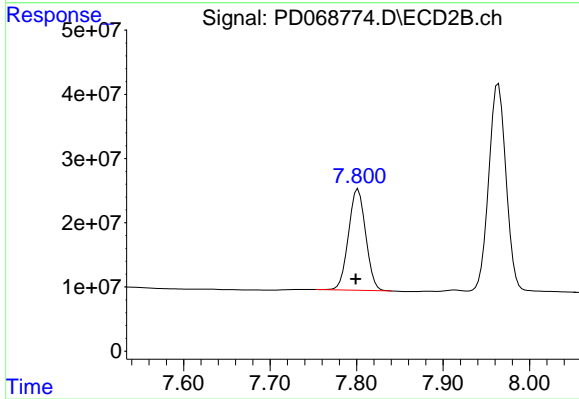
#19 Endosulfan Sulfate

R.T.: 7.489 min
 Delta R.T.: 0.003 min
 Response: 426634191
 Conc: 58.01 ng/ml



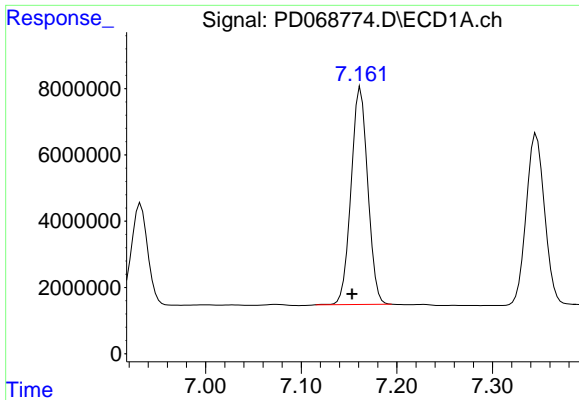
#20 Methoxychlor

R.T.: 6.932 min
 Delta R.T.: 0.008 min
 Response: 36825852
 Conc: 53.14 ng/ml



#20 Methoxychlor

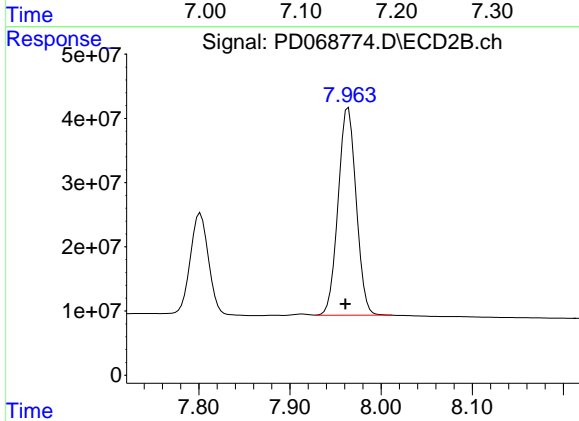
R.T.: 7.802 min
 Delta R.T.: 0.003 min
 Response: 217366907
 Conc: 59.63 ng/ml



#21 Endrin ketone

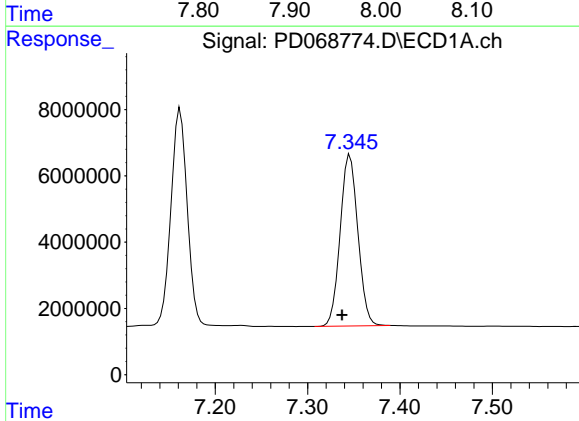
R.T.: 7.162 min
 Delta R.T.: 0.009 min
 Response: 79753401
 Conc: 54.17 ng/ml

Instrument :
 ECD_D
 ClientSampleId :



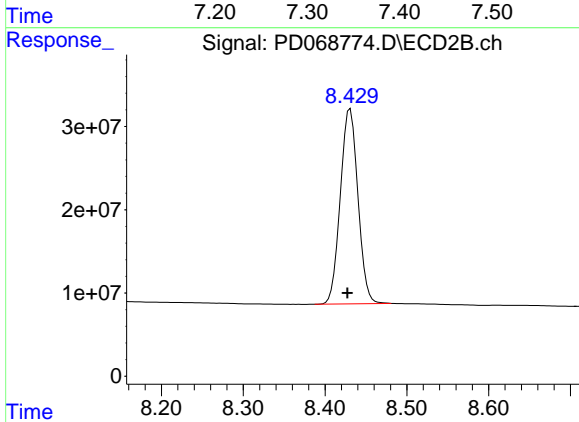
#21 Endrin ketone

R.T.: 7.964 min
 Delta R.T.: 0.003 min
 Response: 445880796
 Conc: 57.54 ng/ml



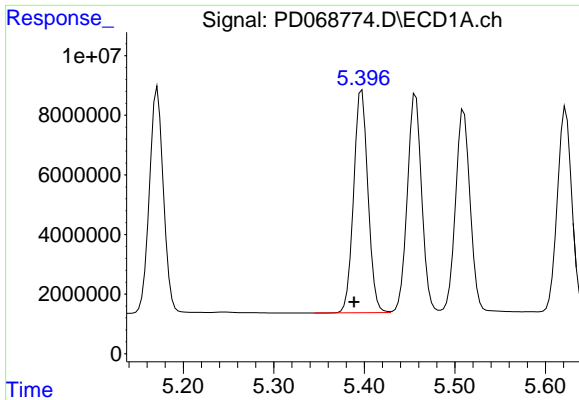
#22 Mirex

R.T.: 7.346 min
 Delta R.T.: 0.009 min
 Response: 69005271
 Conc: 58.22 ng/ml



#22 Mirex

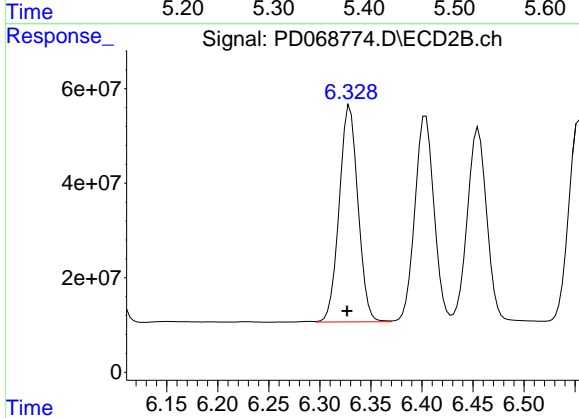
R.T.: 8.431 min
 Delta R.T.: 0.003 min
 Response: 349184383
 Conc: 63.70 ng/ml



#25 Chlordane-3

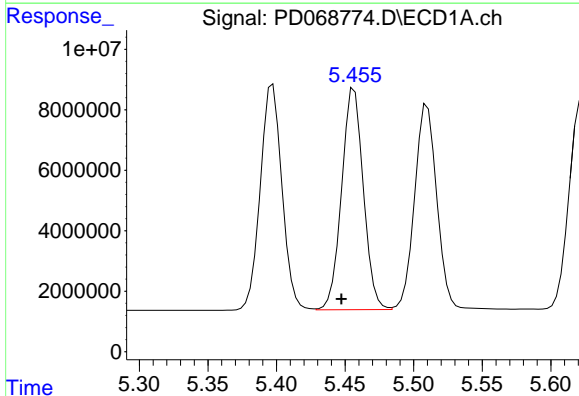
R.T.: 5.397 min
 Delta R.T.: 0.009 min
 Response: 81999021
 Conc: 588.09 ng/ml

Instrument :
 ECD_D
 ClientSampleId :



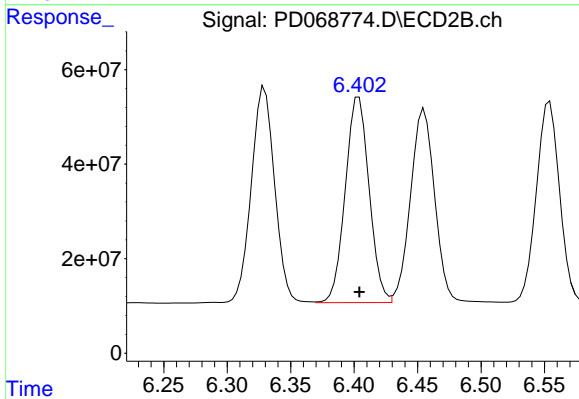
#25 Chlordane-3

R.T.: 6.329 min
 Delta R.T.: 0.003 min
 Response: 585358610
 Conc: 435.67 ng/ml



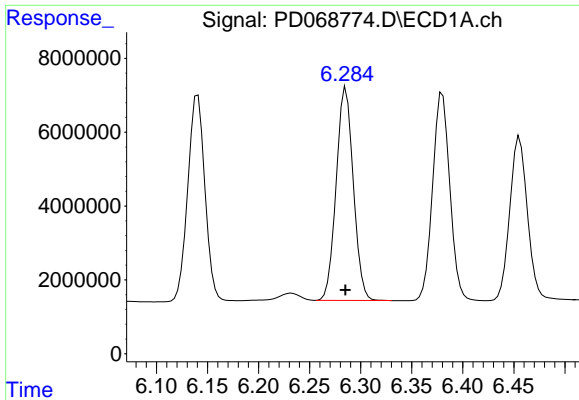
#26 Chlordane-4

R.T.: 5.457 min
 Delta R.T.: 0.009 min
 Response: 80795651
 Conc: 682.68 ng/ml



#26 Chlordane-4

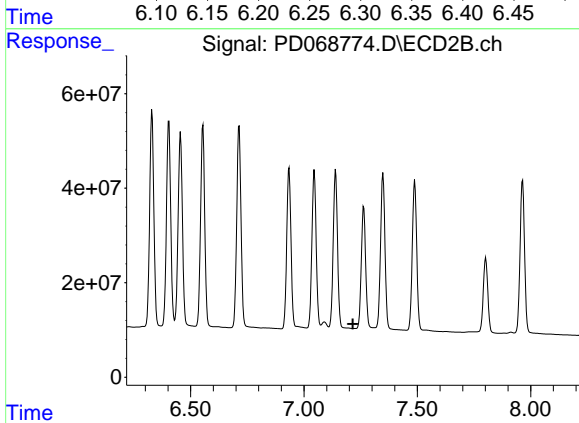
R.T.: 6.404 min
 Delta R.T.: 0.000 min
 Response: 568553154
 Conc: 365.73 ng/ml



#27 Chlordane-5

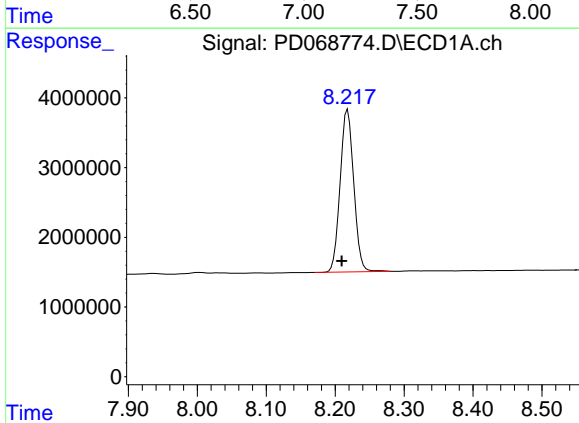
R.T.: 6.286 min
 Delta R.T.: 0.000 min
 Response: 67464057
 Conc: 1350.37 ng/m

Instrument :
 ECD_D
 ClientSampleId :



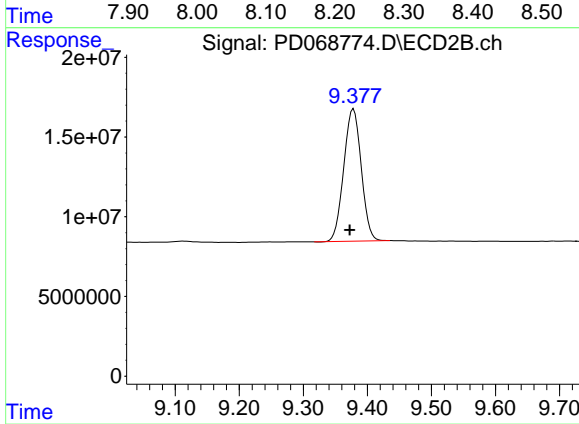
#27 Chlordane-5

R.T.: 0.000 min
 Exp R.T. : 7.215 min
 Response: 0
 Conc: N.D.



#28 Decachlorobiphenyl

R.T.: 8.218 min
 Delta R.T.: 0.008 min
 Response: 31987674
 Conc: 25.32 ng/ml



#28 Decachlorobiphenyl

R.T.: 9.378 min
 Delta R.T.: 0.006 min
 Response: 157386142
 Conc: 27.77 ng/ml