

Data Path : Z:\pestpcbsrv\HPCHEM1\ECD_D\Data\PD032719\
 Data File : PD052185.D
 Signal(s) : Signal #1: ECD1A.CH Signal #2: ECD2B.CH
 Acq On : 27 Mar 2019 12:29
 Operator : AJ\SJ
 Sample : K2084-04
 Misc :
 ALS Vial : 15 Sample Multiplier: 1

Instrument :
 ECD_D
 ClientSampleId :
 BF7W6

Integration File signal 1: autoint1.e
 Integration File signal 2: autoint2.e
 Quant Time: Mar 28 03:11:20 2019
 Quant Method : Z:\pestpcbsrv\HPCHEM1\ECD_D\Method\PD032519CLP.M
 Quant Title : GC Extractables
 QLast Update : Mon Mar 25 18:59:03 2019
 Response via : Initial Calibration
 Integrator: ChemStation 6890 Scale Mode: Large solvent peaks clipped

Volume Inj. : 1 µl
 Signal #1 Phase : ZB-MR2 Signal #2 Phase: ZB-MR1
 Signal #1 Info : 30M x 0.32mm x0.2 Signal #2 Info : 30M x 0.32mm x 0.50µm

Compound	RT#1	RT#2	Resp#1	Resp#2	ng/ml	ng/ml

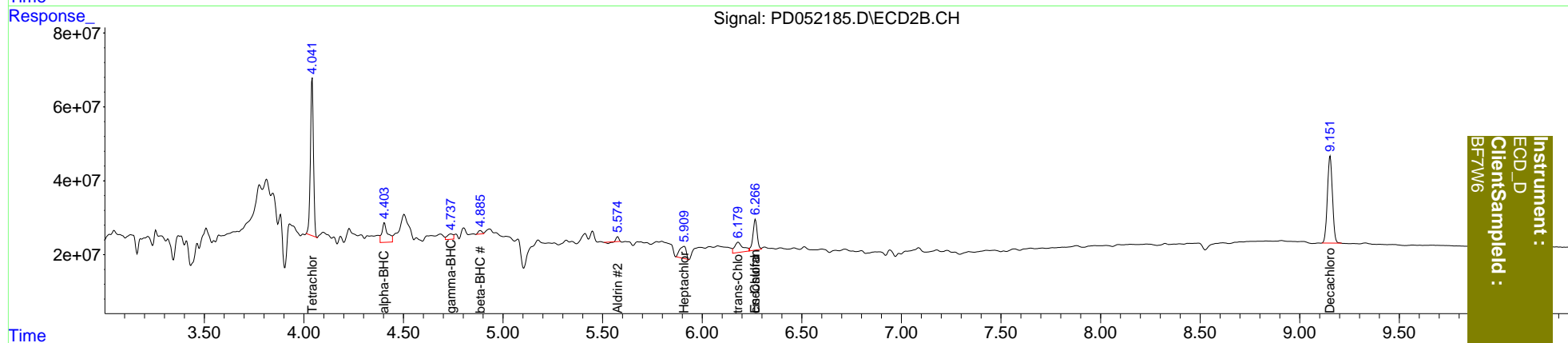
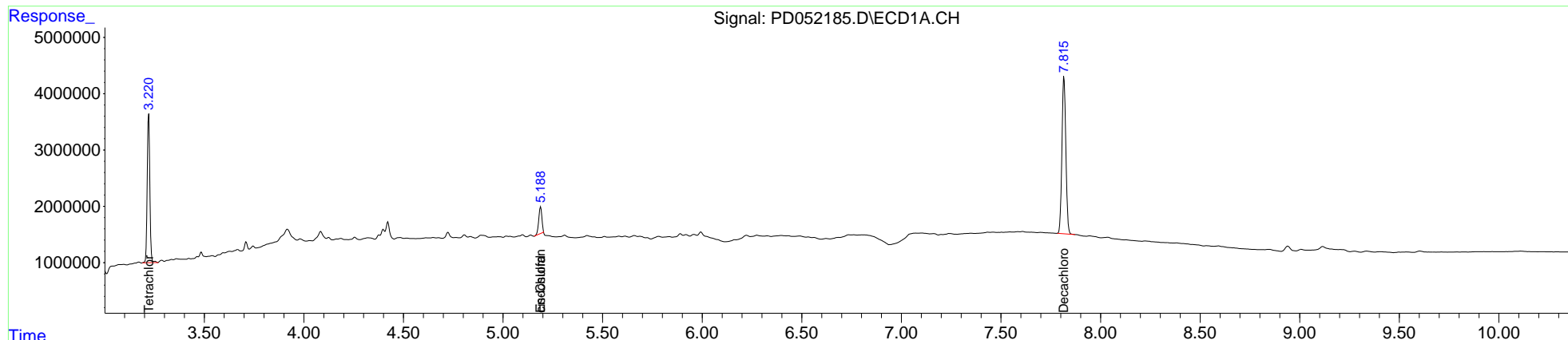
System Monitoring Compounds						
1) SA Tetrachlo...	3.221	4.042	23889077	455.8E6	16.830	15.664
27) SA Decachlor...	7.817	9.153	38259202	415.9E6	24.433	26.943
Target Compounds						
2) A alpha-BHC	0.000	4.405f	0	107.2E6	N.D.	2.451
3) MA gamma-BHC...	0.000	4.738	0	29220963	N.D.	0.736
5) MB Aldrin	0.000	5.576f	0	8316050	N.D.	0.223
6) B beta-BHC	0.000	4.886	0	12573576	N.D.	0.685
8) B Heptachlo...	0.000	5.909	0	74884836	N.D.	2.198
9) A Endosulfan I	5.189	6.267	5127858	122.1E6	2.637	3.896 #
10) B trans-Chl...	0.000	6.181	0	80775373	N.D.	2.378
11) B cis-Chlor...	5.189f	6.267	5127858	122.1E6	2.544	3.761 #

(f)=RT Delta > 1/2 Window (#)=Amounts differ by > 25% (m)=manual int.

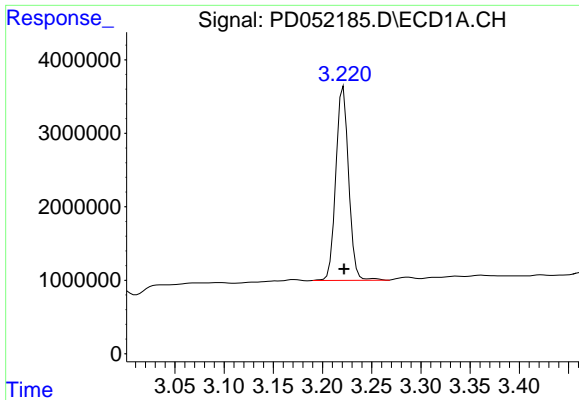
Data Path : Z:\pestpcbsrv\HPCHEM1\ECD_D\Data\PD032719\
 Data File : PD052185.D
 Signal(s) : Signal #1: ECD1A.CH Signal #2: ECD2B.CH
 Acq On : 27 Mar 2019 12:29
 Operator : AJ\SJ
 Sample : K2084-04
 Misc :
 ALS Vial : 15 Sample Multiplier: 1

Integration File signal 1: autoint1.e
 Integration File signal 2: autoint2.e
 Quant Time: Mar 28 03:11:20 2019
 Quant Method : Z:\pestpcbsrv\HPCHEM1\ECD_D\Method\PD032519CLP.M
 Quant Title : GC Extractables
 QLast Update : Mon Mar 25 18:59:03 2019
 Response via : Initial Calibration
 Integrator: ChemStation 6890 Scale Mode: Large solvent peaks clipped

Volume Inj. : 1 µl
 Signal #1 Phase : ZB-MR2 Signal #2 Phase: ZB-MR1
 Signal #1 Info : 30M x 0.32mm x0.2 Signal #2 Info : 30M x 0.32mm x 0.50µm

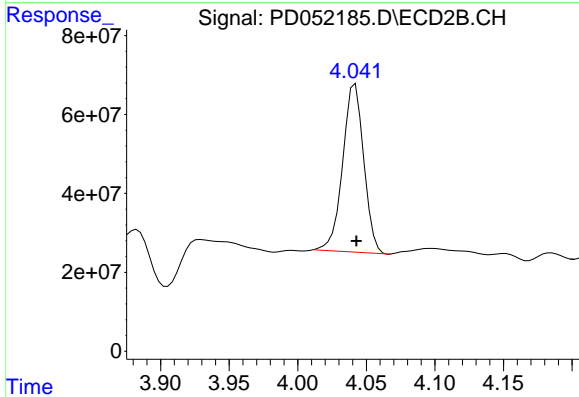


Instrument :
 ECD_D
 ClientSampleId :
 BFTW6

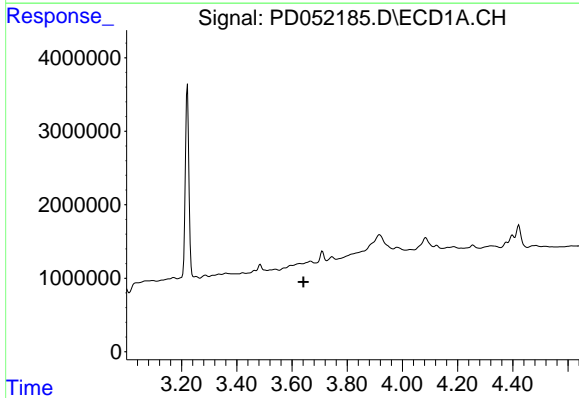


#1 Tetrachloro-m-xylene
 R.T.: 3.221 min
 Delta R.T.: 0.000 min
 Response: 23889077
 Conc: 16.83 ng/ml

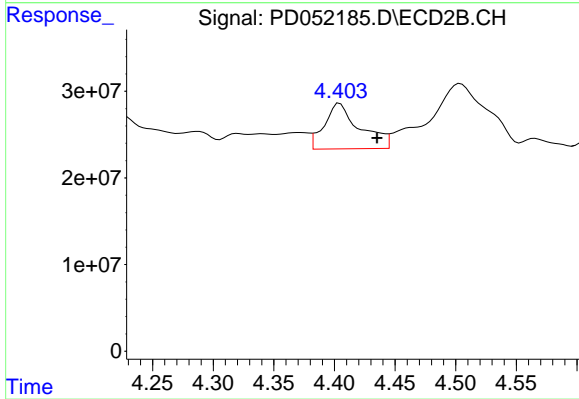
Instrument :
 ECD_D
 ClientSampled :
 BF7W6



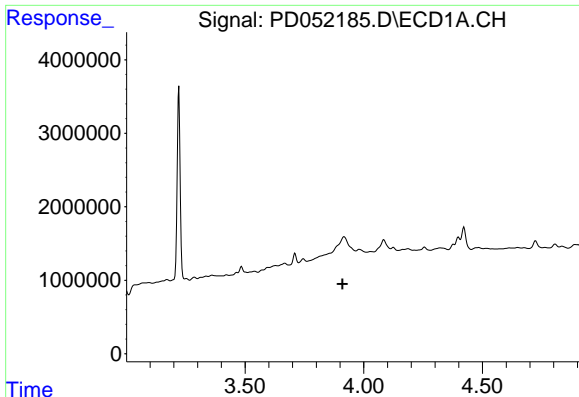
#1 Tetrachloro-m-xylene
 R.T.: 4.042 min
 Delta R.T.: 0.000 min
 Response: 455769909
 Conc: 15.66 ng/ml



#2 alpha-BHC
 R.T.: 0.000 min
 Exp R.T. : 3.641 min
 Response: 0
 Conc: N.D.

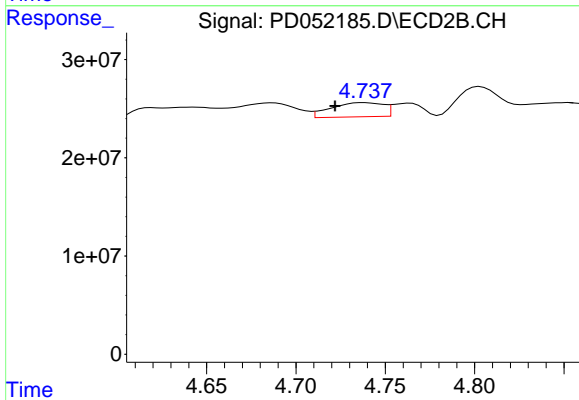


#2 alpha-BHC
 R.T.: 4.405 min
 Delta R.T.: -0.031 min
 Response: 107171099
 Conc: 2.45 ng/ml

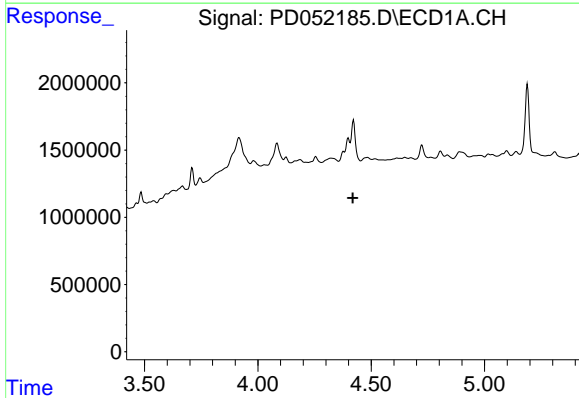


#3 gamma-BHC (Lindane)
 R.T.: 0.000 min
 Exp R.T. : 3.910 min
 Response: 0
 Conc: N.D.

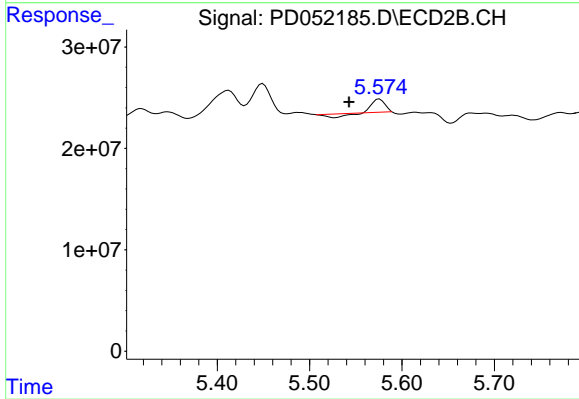
Instrument :
 ECD_D
 ClientSampled :
 BF7W6



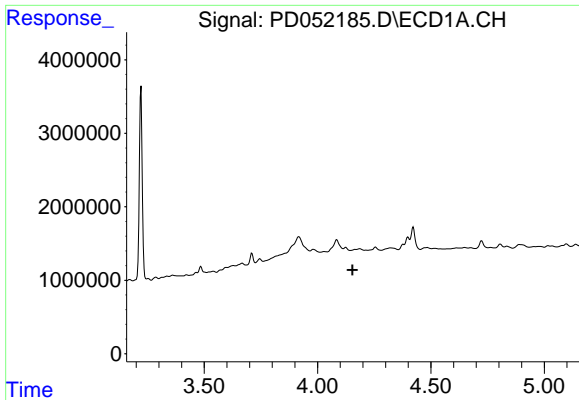
#3 gamma-BHC (Lindane)
 R.T.: 4.738 min
 Delta R.T.: 0.016 min
 Response: 29220963
 Conc: 0.74 ng/ml



#5 Aldrin
 R.T.: 0.000 min
 Exp R.T. : 4.419 min
 Response: 0
 Conc: N.D.



#5 Aldrin
 R.T.: 5.576 min
 Delta R.T.: 0.033 min
 Response: 8316050
 Conc: 0.22 ng/ml

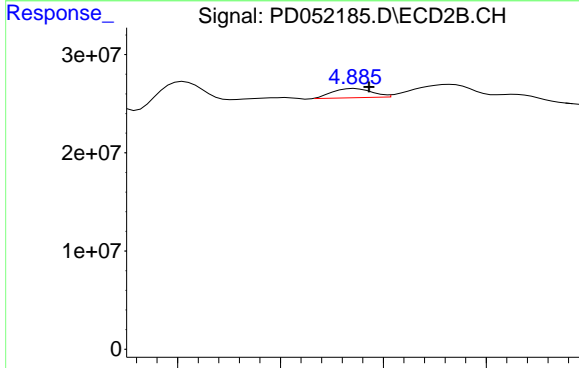


#6 beta-BHC

R.T.: 0.000 min
 Exp R.T. : 4.154 min
 Response: 0
 Conc: N.D.

Instrument :
 ECD_D
 ClientSampled :
 BF7W6

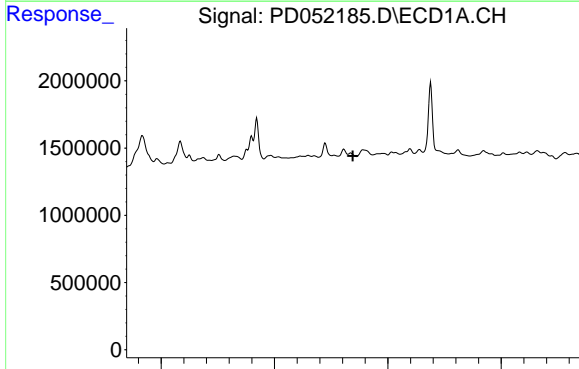
Time



#6 beta-BHC

R.T.: 4.886 min
 Delta R.T.: -0.007 min
 Response: 12573576
 Conc: 0.69 ng/ml

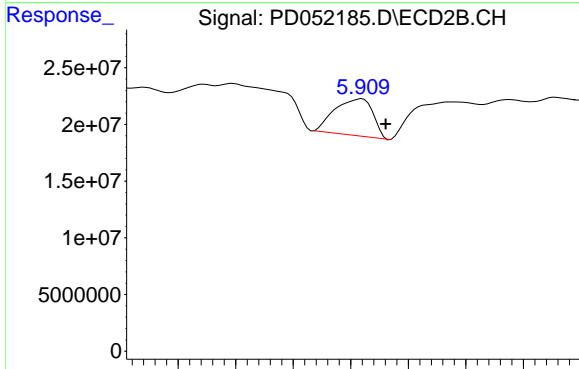
Time



#8 Heptachlor epoxide

R.T.: 0.000 min
 Exp R.T. : 4.846 min
 Response: 0
 Conc: N.D.

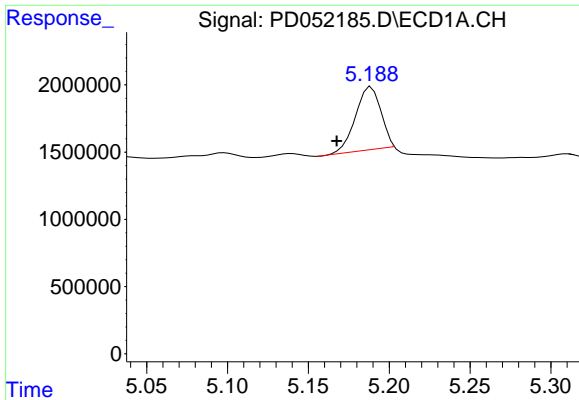
Time



#8 Heptachlor epoxide

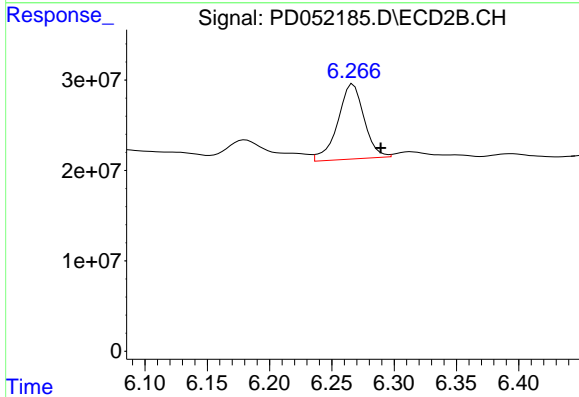
R.T.: 5.909 min
 Delta R.T.: -0.021 min
 Response: 74884836
 Conc: 2.20 ng/ml

Time

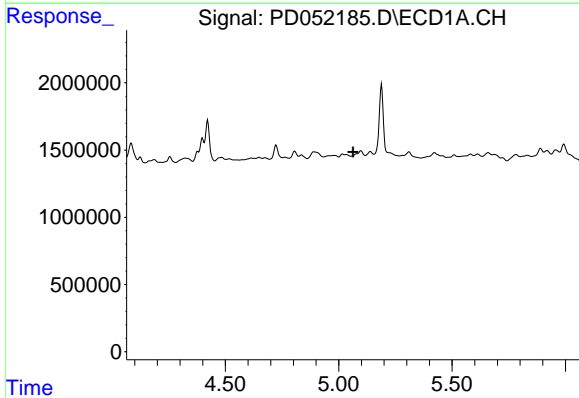


#9 Endosulfan I
 R.T.: 5.189 min
 Delta R.T.: 0.021 min
 Response: 5127858
 Conc: 2.64 ng/ml

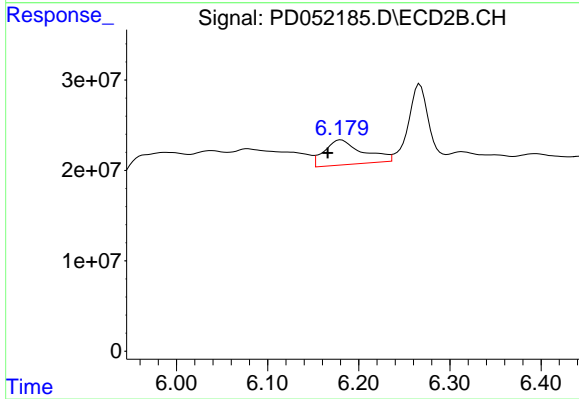
Instrument :
 ECD_D
 ClientSampled :
 BF7W6



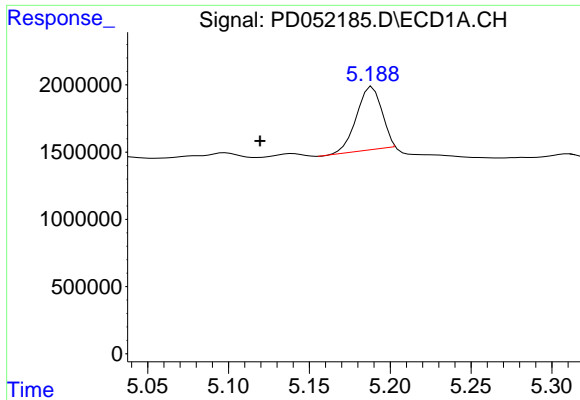
#9 Endosulfan I
 R.T.: 6.267 min
 Delta R.T.: -0.022 min
 Response: 122127784
 Conc: 3.90 ng/ml



#10 trans-Chlordane
 R.T.: 0.000 min
 Exp R.T. : 5.063 min
 Response: 0
 Conc: N.D.

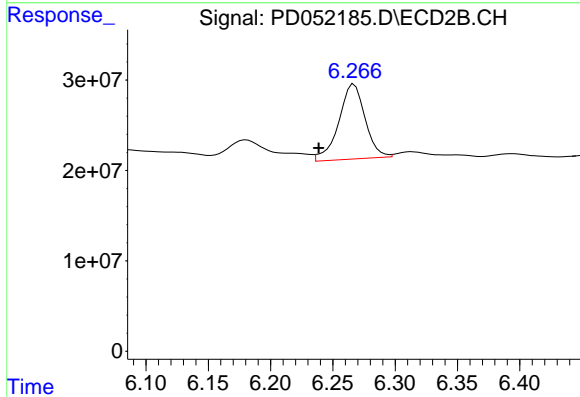


#10 trans-Chlordane
 R.T.: 6.181 min
 Delta R.T.: 0.015 min
 Response: 80775373
 Conc: 2.38 ng/ml

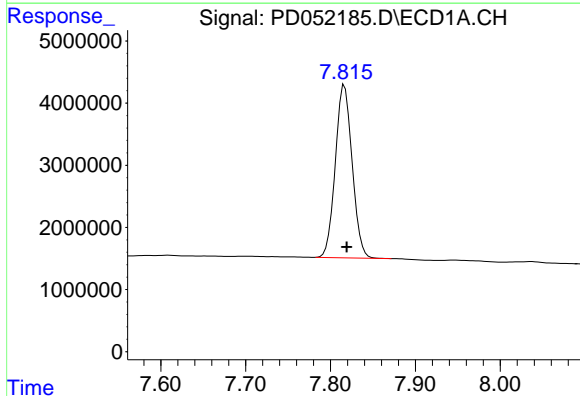


#11 cis-Chlordane
 R.T.: 5.189 min
 Delta R.T.: 0.070 min
 Response: 5127858
 Conc: 2.54 ng/ml

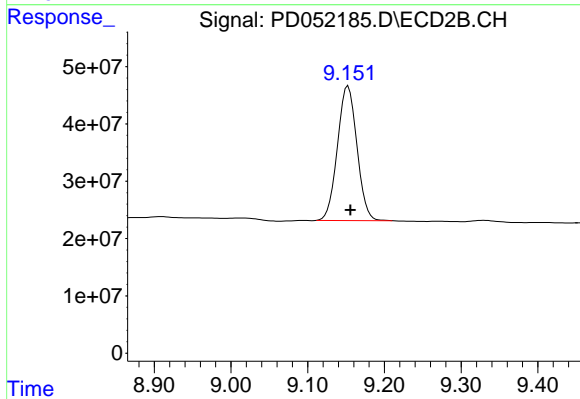
Instrument :
 ECD_D
 ClientSampled :
 BF7W6



#11 cis-Chlordane
 R.T.: 6.267 min
 Delta R.T.: 0.028 min
 Response: 122127784
 Conc: 3.76 ng/ml



#27 Decachlorobiphenyl
 R.T.: 7.817 min
 Delta R.T.: -0.003 min
 Response: 38259202
 Conc: 24.43 ng/ml



#27 Decachlorobiphenyl
 R.T.: 9.153 min
 Delta R.T.: -0.003 min
 Response: 415919592
 Conc: 26.94 ng/ml