

Data Path : Z:\pestpcbsrv\HPCHEM1\ECD_D\Data\PD032819\
 Data File : PD052272.D
 Signal(s) : Signal #1: ECD1A.CH Signal #2: ECD2B.CH
 Acq On : 28 Mar 2019 23:21
 Operator : AJ\SJ
 Sample : K2068-02
 Misc :
 ALS Vial : 32 Sample Multiplier: 1

Instrument :
 ECD_D
 ClientSampleId :
 BF5M1

Integration File signal 1: autoint1.e
 Integration File signal 2: autoint2.e
 Quant Time: Mar 29 01:43:05 2019
 Quant Method : Z:\pestpcbsrv\HPCHEM1\ECD_D\Method\PD032519CLP.M
 Quant Title : GC Extractables
 QLast Update : Mon Mar 25 18:59:03 2019
 Response via : Initial Calibration
 Integrator: ChemStation 6890 Scale Mode: Large solvent peaks clipped

Volume Inj. : 1 µl
 Signal #1 Phase : ZB-MR2 Signal #2 Phase: ZB-MR1
 Signal #1 Info : 30M x 0.32mm x 0.2 Signal #2 Info : 30M x 0.32mm x 0.50µm

Compound	RT#1	RT#2	Resp#1	Resp#2	ng/ml	ng/ml

System Monitoring Compounds						
1) SA Tetrachlo...	3.221	4.042	30408407	562.5E6	21.423	19.332
27) SA Decachlor...	7.817	9.154	43149174	439.7E6	27.556	28.481
Target Compounds						
2) A alpha-BHC	0.000	4.404f	0 91849432		N.D.	2.100
3) MA gamma-BHC...	3.919	0.000	10158613	0	4.533	N.D. #
9) A Endosulfan I	5.191	6.222f	4331455	22974658	2.228	0.733 #
10) B trans-Chl...	0.000	6.154	0 108.1E6		N.D.	3.183
11) B cis-Chlor...	0.000	6.222	0 22974658		N.D.	0.708
12) B 4,4'-DDE	5.287	6.392	9163139	151.0E6	4.544	4.935
13) MA Dieldrin	0.000	6.575	0 11383743		N.D.	0.365
15) B Endosulfa...	0.000	6.977	0 17584837		N.D.	0.694
16) A 4,4'-DDD	0.000	6.885	0 34451740		N.D.	1.447
17) MA 4,4'-DDT	0.000	7.188	0 113.6E6		N.D.	5.881
20) A Methoxychlor	6.582	7.643	4145792	23231333	4.367	2.498 #
21) B Endrin ke...	6.714f	0.000	2471322	0	1.246	N.D. #
22) Toxaphene-1	0.000	6.392	0 151.0E6		N.D.	1126.417
23) Toxaphene-2	0.000	6.575	0 11383743		N.D.	45.571
24) Toxaphene-3	0.000	7.188	0 113.6E6		N.D.	561.673
25) Toxaphene-4	0.000	7.188	0 113.6E6		N.D.	204.033
26) Toxaphene-5	6.714	0.000	2471322	0	57.068	N.D. #

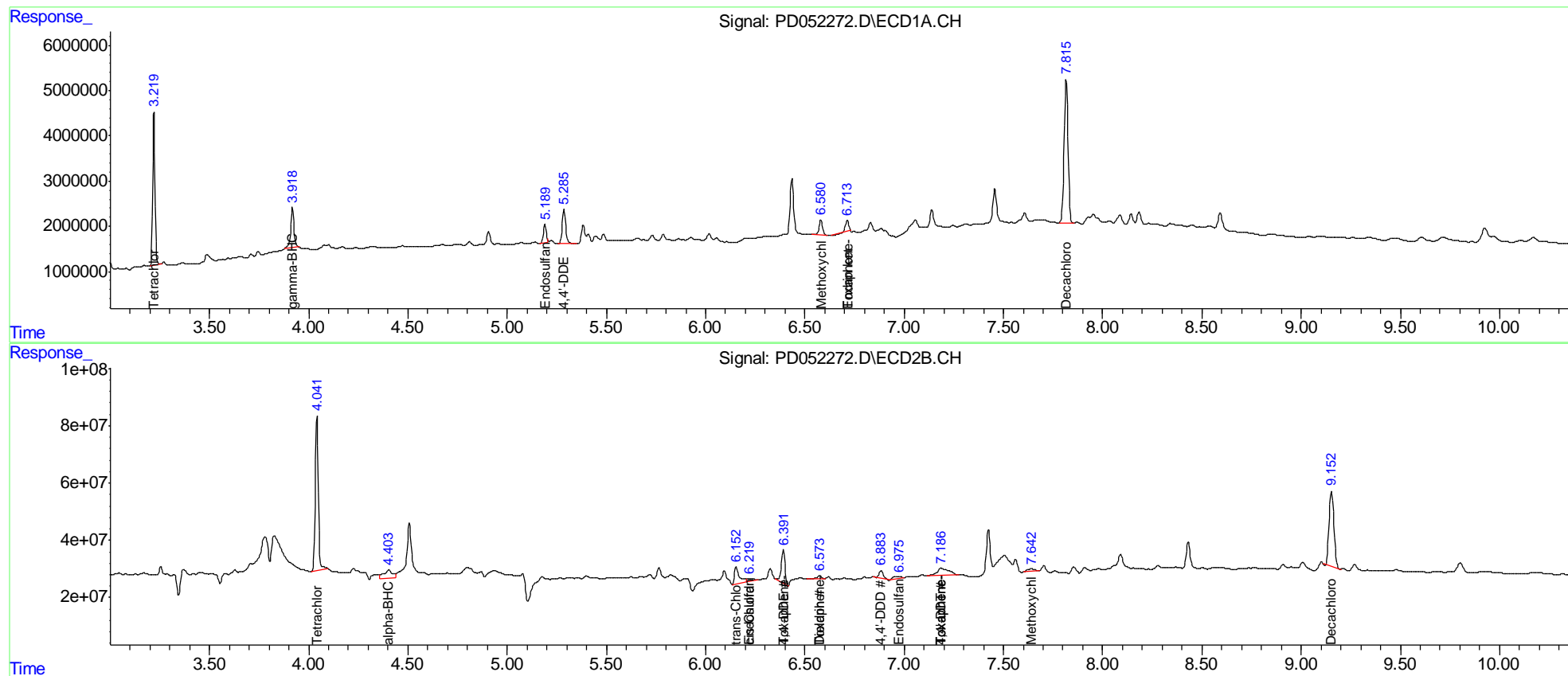
(f)=RT Delta > 1/2 Window (#)=Amounts differ by > 25% (m)=manual int.

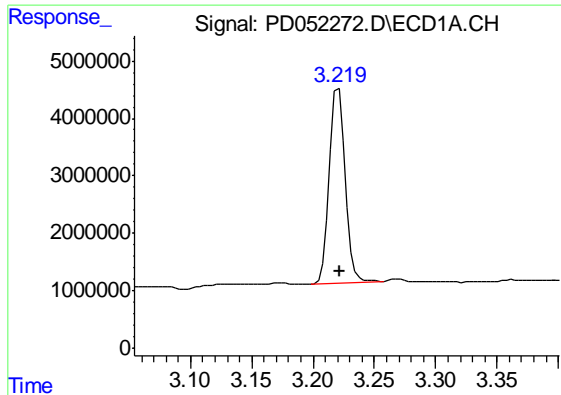
Data Path : Z:\pestpcbsrv\HPCHEM1\ECD_D\Data\PD032819\
 Data File : PD052272.D
 Signal(s) : Signal #1: ECD1A.CH Signal #2: ECD2B.CH
 Acq On : 28 Mar 2019 23:21
 Operator : AJ\SJ
 Sample : K2068-02
 Misc :
 ALS Vial : 32 Sample Multiplier: 1

Instrument :
 ECD_D
 ClientSampleId :
 BF5M1

Integration File signal 1: autoint1.e
 Integration File signal 2: autoint2.e
 Quant Time: Mar 29 01:43:05 2019
 Quant Method : Z:\pestpcbsrv\HPCHEM1\ECD_D\Method\PD032519CLP.M
 Quant Title : GC Extractables
 QLast Update : Mon Mar 25 18:59:03 2019
 Response via : Initial Calibration
 Integrator: ChemStation 6890 Scale Mode: Large solvent peaks clipped

Volume Inj. : 1 µl
 Signal #1 Phase : ZB-MR2 Signal #2 Phase: ZB-MR1
 Signal #1 Info : 30M x 0.32mm x0.2 Signal #2 Info : 30M x 0.32mm x 0.50µm

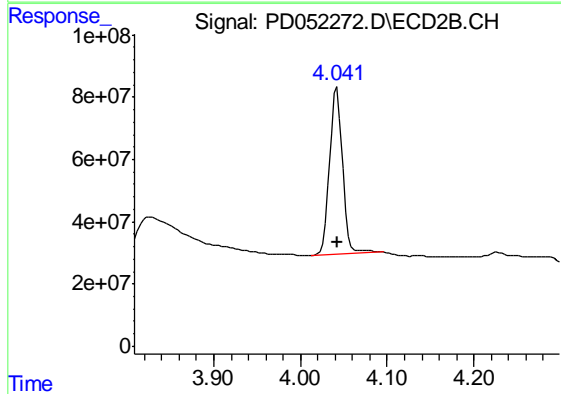




#1 Tetrachloro-m-xylene

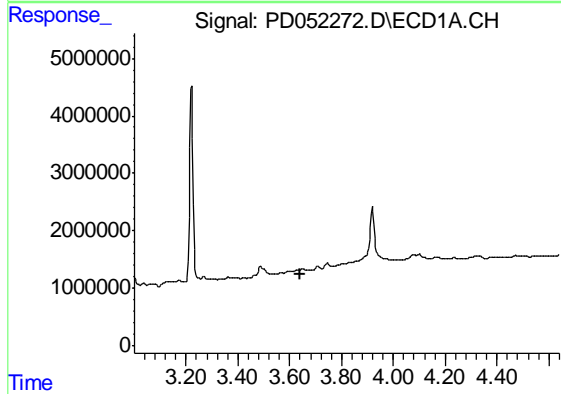
R.T.: 3.221 min
 Delta R.T.: -0.001 min
 Response: 30408407
 Conc: 21.42 ng/ml

Instrument :
 ECD_D
 ClientSampled :
 BF5M1



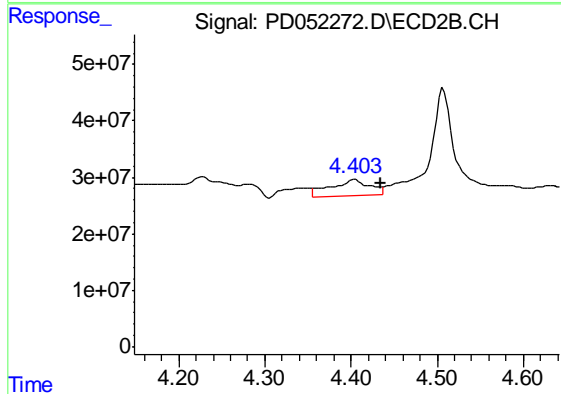
#1 Tetrachloro-m-xylene

R.T.: 4.042 min
 Delta R.T.: 0.000 min
 Response: 562517856
 Conc: 19.33 ng/ml



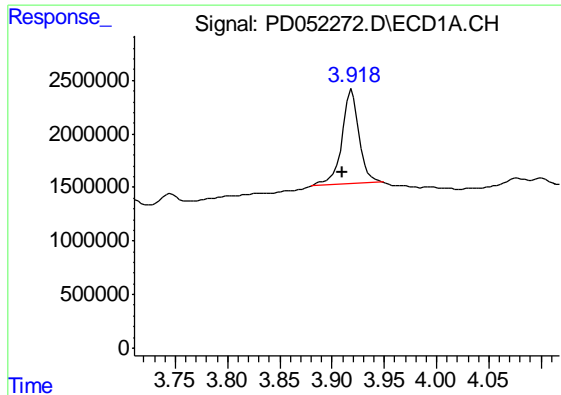
#2 alpha-BHC

R.T.: 0.000 min
 Exp R.T. : 3.641 min
 Response: 0
 Conc: N.D.



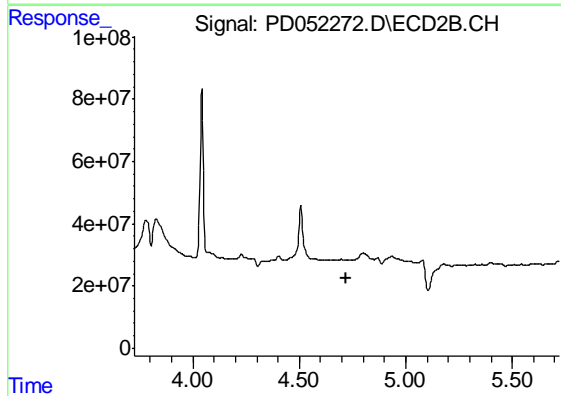
#2 alpha-BHC

R.T.: 4.404 min
 Delta R.T.: -0.031 min
 Response: 91849432
 Conc: 2.10 ng/ml

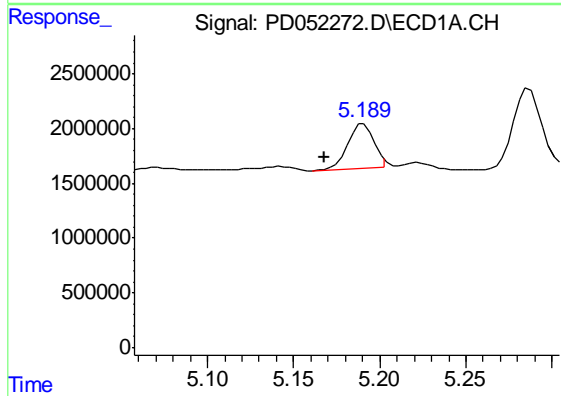


#3 gamma-BHC (Lindane)
 R.T.: 3.919 min
 Delta R.T.: 0.010 min
 Response: 10158613
 Conc: 4.53 ng/ml

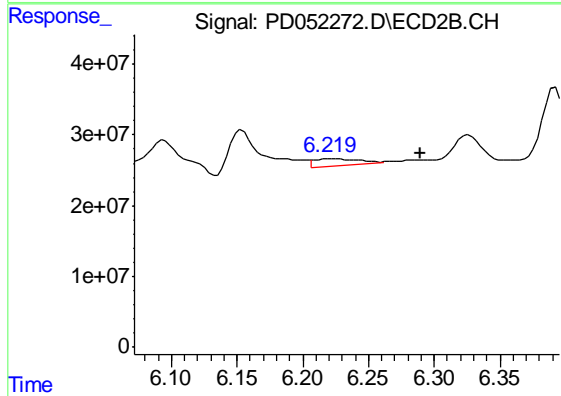
Instrument :
 ECD_D
 ClientSampled :
 BF5M1



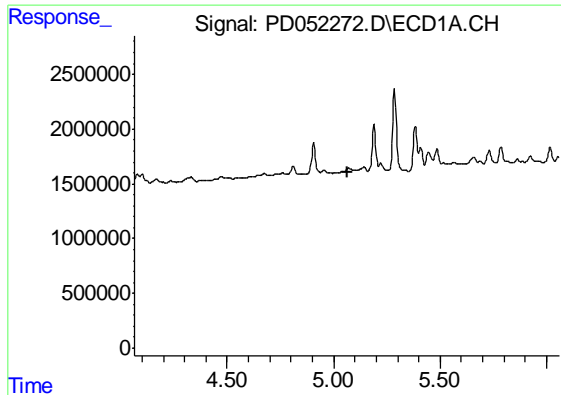
#3 gamma-BHC (Lindane)
 R.T.: 0.000 min
 Exp R.T. : 4.722 min
 Response: 0
 Conc: N.D.



#9 Endosulfan I
 R.T.: 5.191 min
 Delta R.T.: 0.023 min
 Response: 4331455
 Conc: 2.23 ng/ml



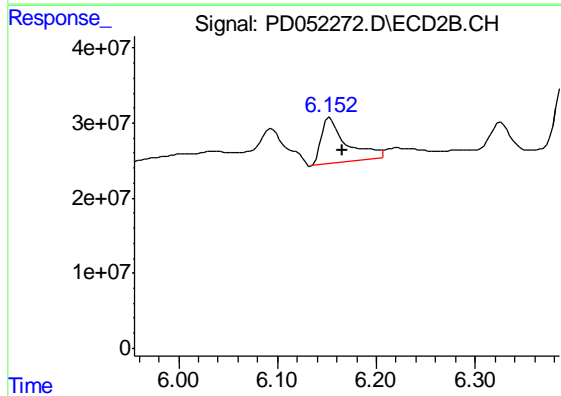
#9 Endosulfan I
 R.T.: 6.222 min
 Delta R.T.: -0.067 min
 Response: 22974658
 Conc: 0.73 ng/ml



#10 trans-Chlordane

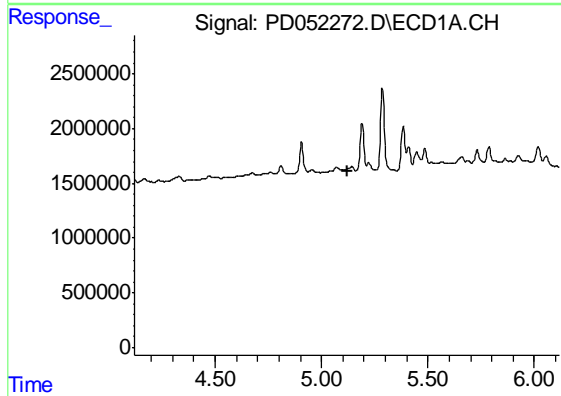
R.T.: 0.000 min
 Exp R.T. : 5.063 min
 Response: 0
 Conc: N.D.

Instrument :
 ECD_D
 ClientSampleId :
 BF5M1



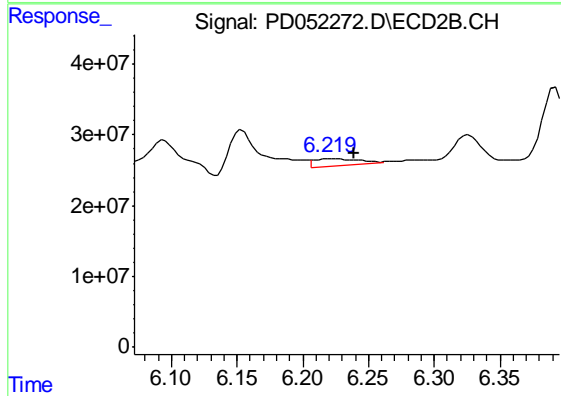
#10 trans-Chlordane

R.T.: 6.154 min
 Delta R.T.: -0.012 min
 Response: 108102938
 Conc: 3.18 ng/ml



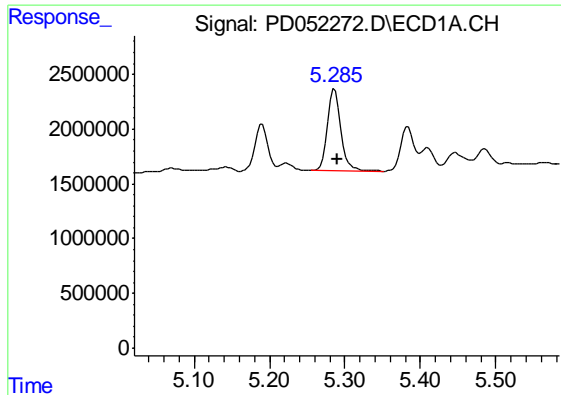
#11 cis-Chlordane

R.T.: 0.000 min
 Exp R.T. : 5.119 min
 Response: 0
 Conc: N.D.



#11 cis-Chlordane

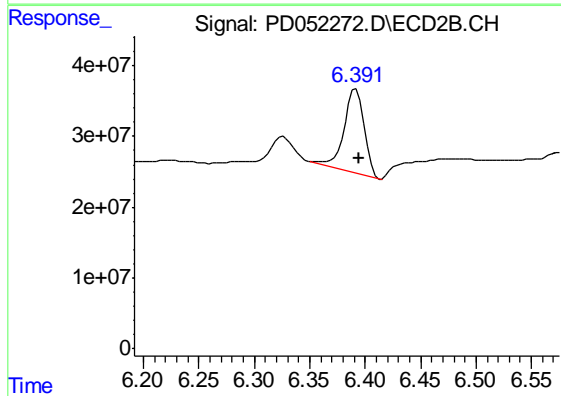
R.T.: 6.222 min
 Delta R.T.: -0.016 min
 Response: 22974658
 Conc: 0.71 ng/ml



#12 4,4'-DDE

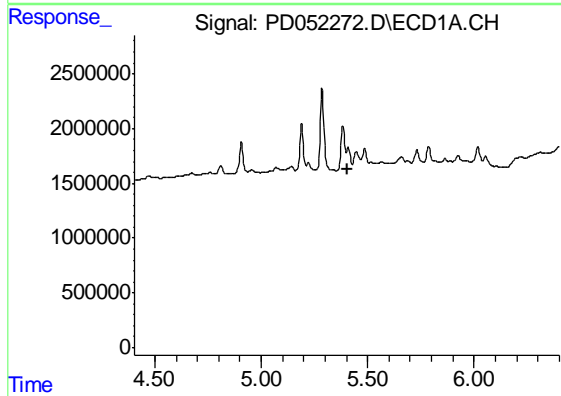
R.T.: 5.287 min
 Delta R.T.: -0.003 min
 Response: 9163139
 Conc: 4.54 ng/ml

Instrument :
 ECD_D
 ClientSampled :
 BF5M1



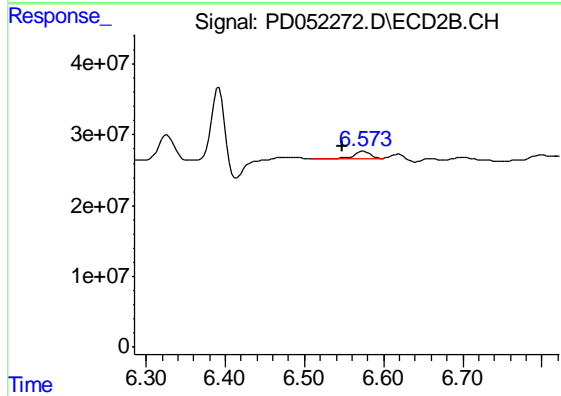
#12 4,4'-DDE

R.T.: 6.392 min
 Delta R.T.: -0.003 min
 Response: 150990969
 Conc: 4.94 ng/ml



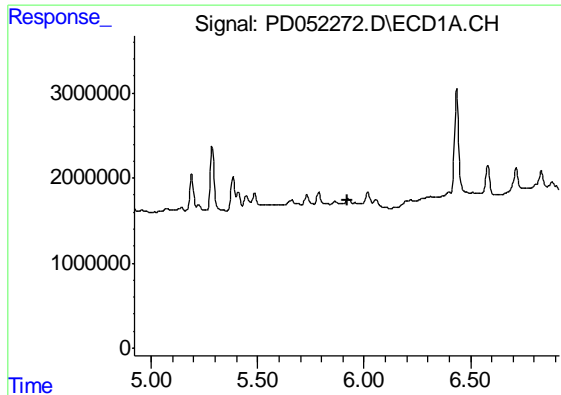
#13 Dieldrin

R.T.: 0.000 min
 Exp R.T. : 5.404 min
 Response: 0
 Conc: N.D.



#13 Dieldrin

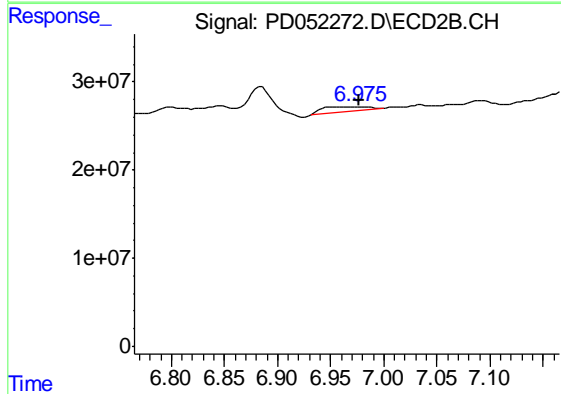
R.T.: 6.575 min
 Delta R.T.: 0.028 min
 Response: 11383743
 Conc: 0.37 ng/ml



#15 Endosulfan II

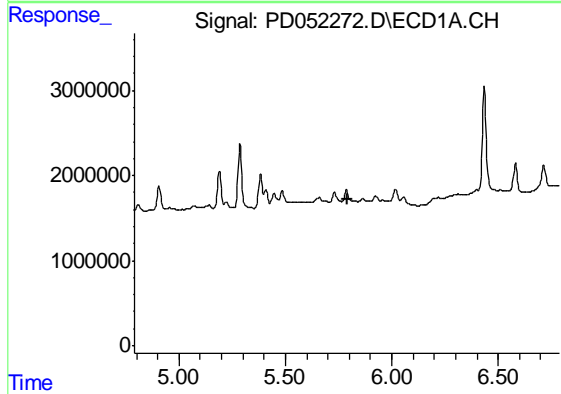
R.T.: 0.000 min
 Exp R.T. : 5.920 min
 Response: 0
 Conc: N.D.

Instrument :
 ECD_D
 ClientSampleId :
 BF5M1



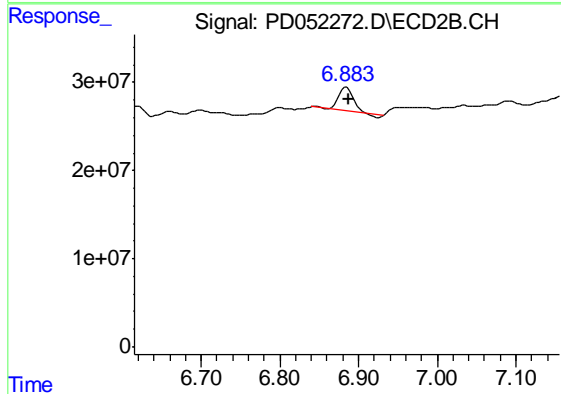
#15 Endosulfan II

R.T.: 6.977 min
 Delta R.T.: 0.000 min
 Response: 17584837
 Conc: 0.69 ng/ml



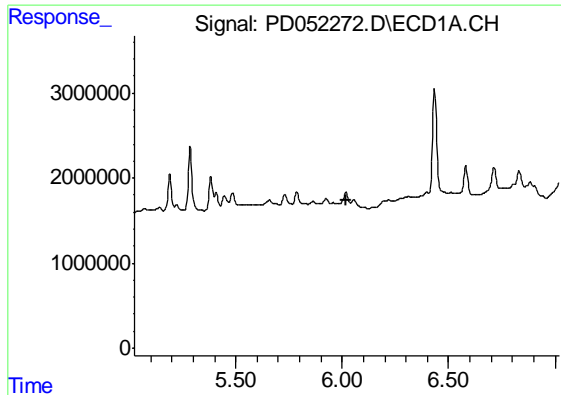
#16 4,4'-DDD

R.T.: 0.000 min
 Exp R.T. : 5.790 min
 Response: 0
 Conc: N.D.



#16 4,4'-DDD

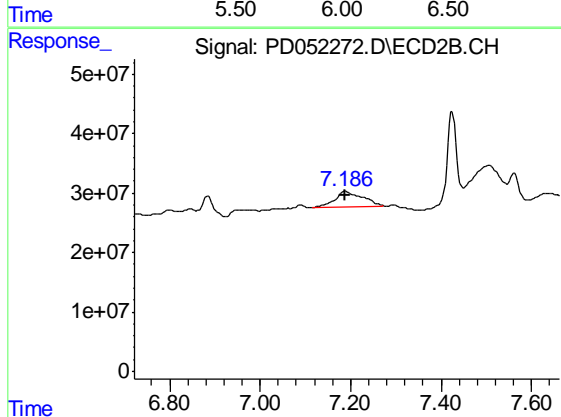
R.T.: 6.885 min
 Delta R.T.: -0.002 min
 Response: 34451740
 Conc: 1.45 ng/ml



#17 4,4'-DDT

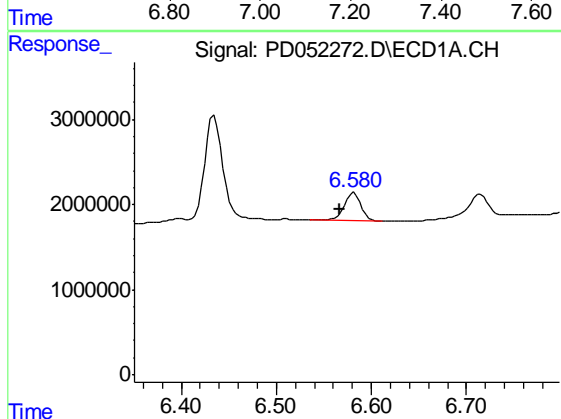
R.T.: 0.000 min
 Exp R.T. : 6.021 min
 Response: 0
 Conc: N.D.

Instrument :
 ECD_D
 ClientSampled :
 BF5M1



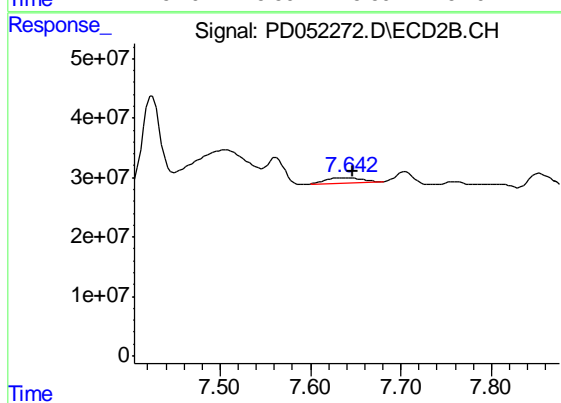
#17 4,4'-DDT

R.T.: 7.188 min
 Delta R.T.: 0.000 min
 Response: 113564303
 Conc: 5.88 ng/ml



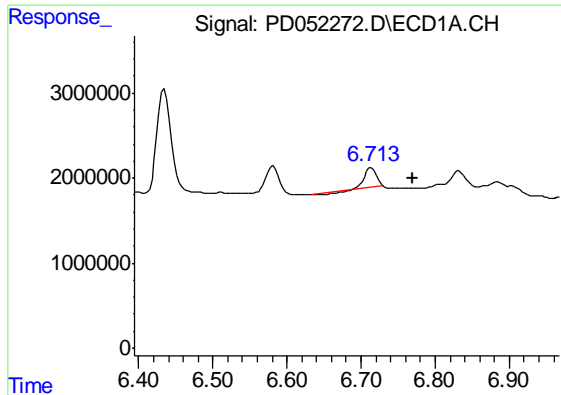
#20 Methoxychlor

R.T.: 6.582 min
 Delta R.T.: 0.015 min
 Response: 4145792
 Conc: 4.37 ng/ml



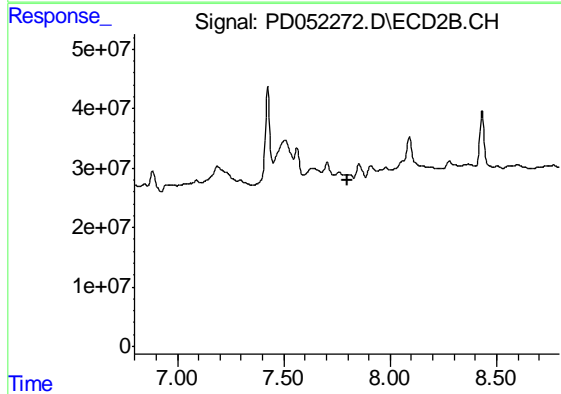
#20 Methoxychlor

R.T.: 7.643 min
 Delta R.T.: -0.003 min
 Response: 23231333
 Conc: 2.50 ng/ml

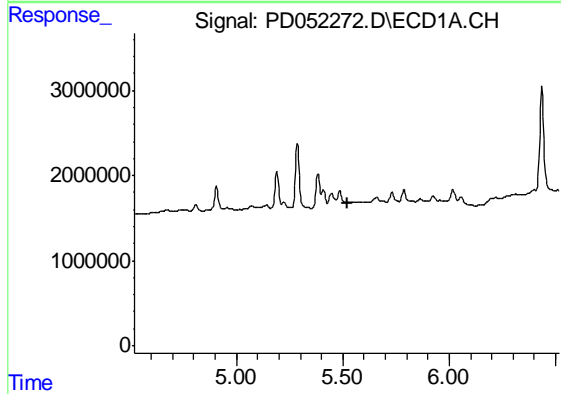


#21 Endrin ketone
 R.T.: 6.714 min
 Delta R.T.: -0.056 min
 Response: 2471322
 Conc: 1.25 ng/ml

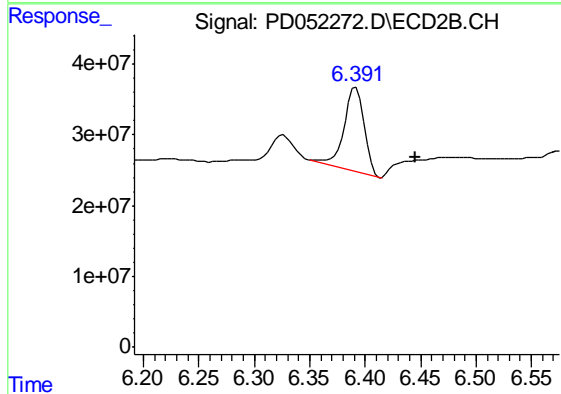
Instrument :
 ECD_D
 ClientSampled :
 BF5M1



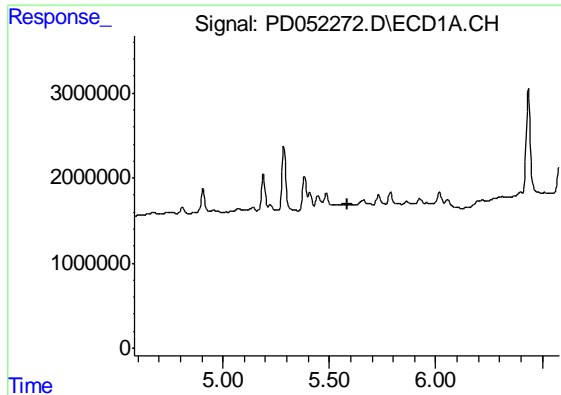
#21 Endrin ketone
 R.T.: 0.000 min
 Exp R.T. : 7.798 min
 Response: 0
 Conc: N.D.



#22 Toxaphene-1
 R.T.: 0.000 min
 Exp R.T. : 5.520 min
 Response: 0
 Conc: N.D.



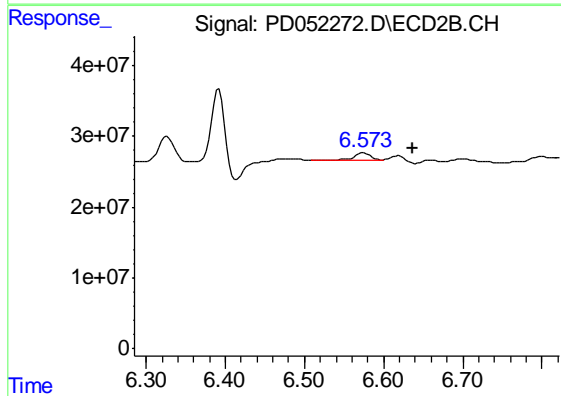
#22 Toxaphene-1
 R.T.: 6.392 min
 Delta R.T.: -0.054 min
 Response: 150990969
 Conc: 1126.42 ng/ml



#23 Toxaphene-2

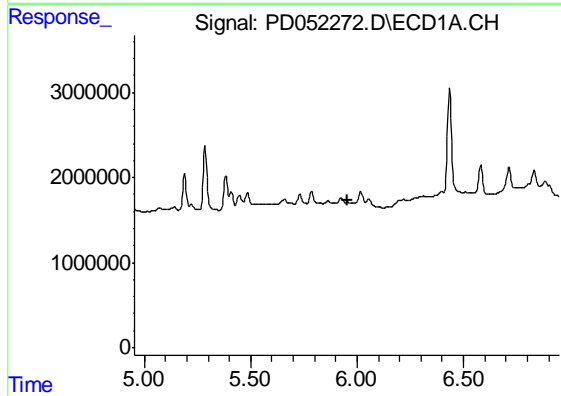
R.T.: 0.000 min
 Exp R.T. : 5.583 min
 Response: 0
 Conc: N.D.

Instrument :
 ECD_D
 ClientSampled :
 BF5M1



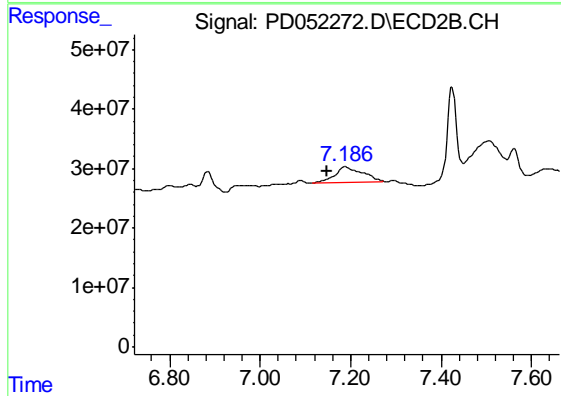
#23 Toxaphene-2

R.T.: 6.575 min
 Delta R.T.: -0.062 min
 Response: 11383743
 Conc: 45.57 ng/ml



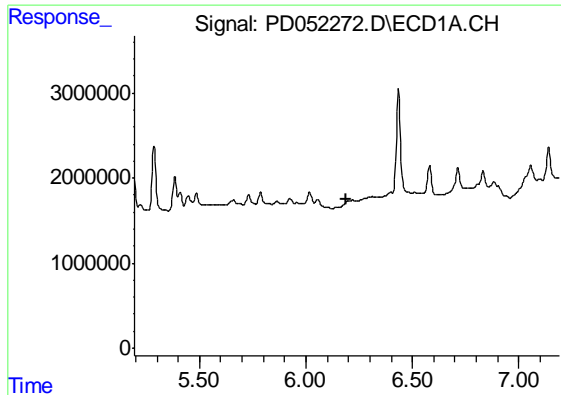
#24 Toxaphene-3

R.T.: 0.000 min
 Exp R.T. : 5.954 min
 Response: 0
 Conc: N.D.



#24 Toxaphene-3

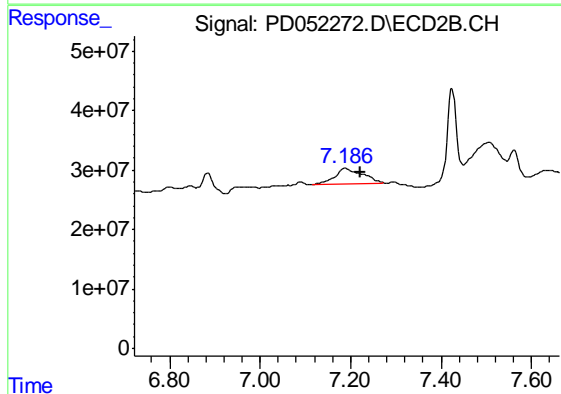
R.T.: 7.188 min
 Delta R.T.: 0.040 min
 Response: 113564303
 Conc: 561.67 ng/ml



#25 Toxaphene-4

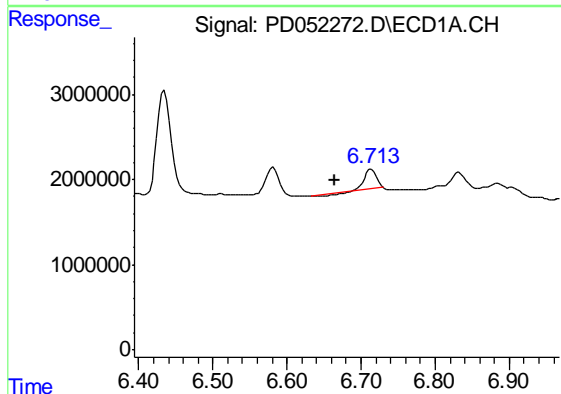
R.T.: 0.000 min
 Exp R.T. : 6.192 min
 Response: 0
 Conc: N.D.

Instrument :
 ECD_D
 ClientSampled :
 BF5M1



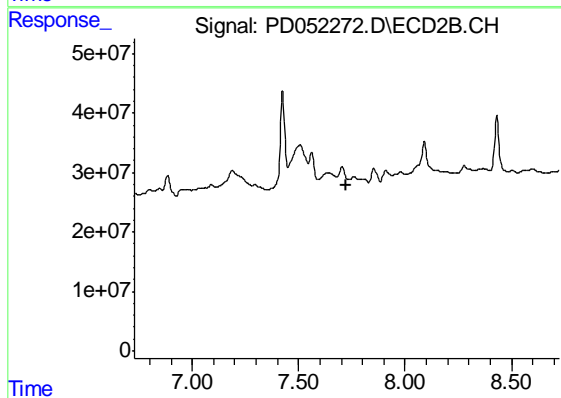
#25 Toxaphene-4

R.T.: 7.188 min
 Delta R.T.: -0.035 min
 Response: 113564303
 Conc: 204.03 ng/ml



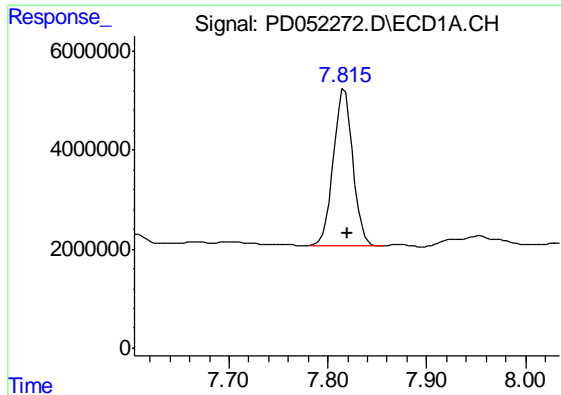
#26 Toxaphene-5

R.T.: 6.714 min
 Delta R.T.: 0.049 min
 Response: 2471322
 Conc: 57.07 ng/ml



#26 Toxaphene-5

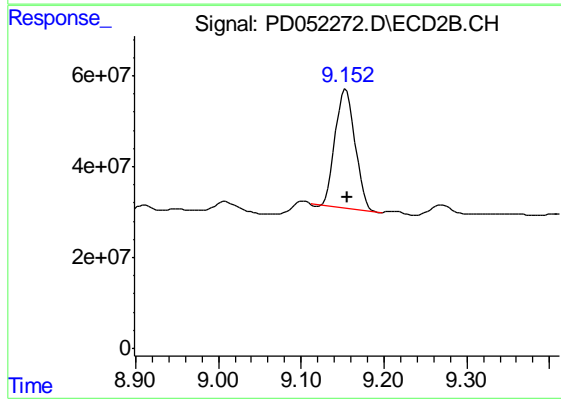
R.T.: 0.000 min
 Exp R.T. : 7.726 min
 Response: 0
 Conc: N.D.



#27 Decachlorobiphenyl

R.T.: 7.817 min
Delta R.T.: -0.002 min
Response: 43149174
Conc: 27.56 ng/ml

Instrument :
ECD_D
ClientSampleId :
BF5M1



#27 Decachlorobiphenyl

R.T.: 9.154 min
Delta R.T.: -0.002 min
Response: 439660908
Conc: 28.48 ng/ml