

Data Path : Z:\pestpcbsrv\HPCHEM1\ECD_D\Data\PD032819\
 Data File : PD052277.D
 Signal(s) : Signal #1: ECD1A.CH Signal #2: ECD2B.CH
 Acq On : 29 Mar 2019 00:46
 Operator : AJ\SJ
 Sample : K2068-01
 Misc :
 ALS Vial : 35 Sample Multiplier: 1

Instrument :
 ECD_D
ClientSampled :
 BF5M0

Manual Integrations
APPROVED
 mohammad
 3/29/2019 10:18:19 AM

Integration File signal 1: autoint1.e
 Integration File signal 2: autoint2.e
 Quant Time: Mar 29 01:44:38 2019
 Quant Method : Z:\pestpcbsrv\HPCHEM1\ECD_D\Method\PD032519CLP.M
 Quant Title : GC Extractables
 QLast Update : Mon Mar 25 18:59:03 2019
 Response via : Initial Calibration
 Integrator: ChemStation 6890 Scale Mode: Large solvent peaks clipped

Volume Inj. : 1 µl
 Signal #1 Phase : ZB-MR2 Signal #2 Phase: ZB-MR1
 Signal #1 Info : 30M x 0.32mm x0.2 Signal #2 Info : 30M x 0.32mm x 0.50µm

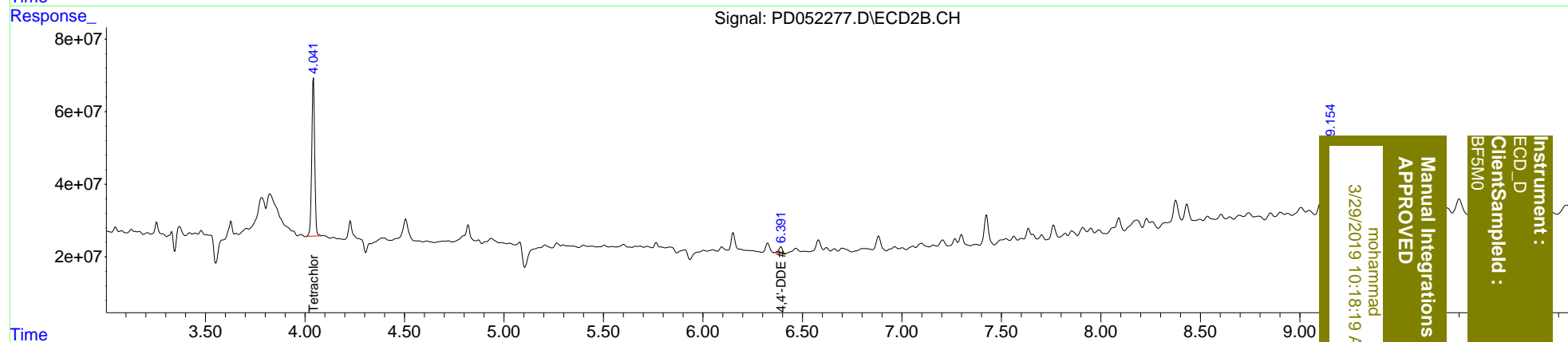
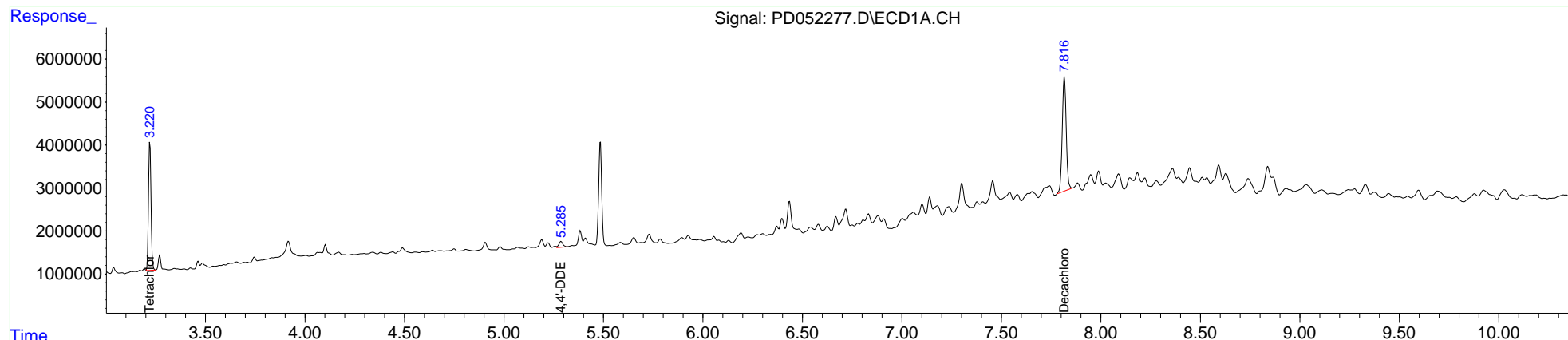
| Compound | RT#1 | RT#2 | Resp#1 | Resp#2 | ng/ml | ng/ml |
|-----------------------------|-------|-------|----------|----------|---------|---------|
| ----- | | | | | | |
| System Monitoring Compounds | | | | | | |
| 1) SA Tetrachlo... | 3.220 | 4.043 | 26352237 | 454.4E6 | 18.565m | 15.618 |
| 27) SA Decachlor... | 7.817 | 9.154 | 37071256 | 383.2E6 | 23.675 | 24.826m |
| Target Compounds | | | | | | |
| 12) B 4,4'-DDE | 5.285 | 6.392 | 1884417 | 24969158 | 0.934m | 0.816 |
| ----- | | | | | | |

(f)=RT Delta > 1/2 Window (#)=Amounts differ by > 25% (m)=manual int.

Data Path : Z:\pestpcbsrv\HPCHEM1\ECD_D\Data\PD032819\
 Data File : PD052277.D
 Signal(s) : Signal #1: ECD1A.CH Signal #2: ECD2B.CH
 Acq On : 29 Mar 2019 00:46
 Operator : AJ\SJ
 Sample : K2068-01
 Misc :
 ALS Vial : 35 Sample Multiplier: 1

Integration File signal 1: autoint1.e
 Integration File signal 2: autoint2.e
 Quant Time: Mar 29 01:44:38 2019
 Quant Method : Z:\pestpcbsrv\HPCHEM1\ECD_D\Method\PD032519CLP.M
 Quant Title : GC Extractables
 QLast Update : Mon Mar 25 18:59:03 2019
 Response via : Initial Calibration
 Integrator: ChemStation 6890 Scale Mode: Large solvent peaks clipped

Volume Inj. : 1 µl
 Signal #1 Phase : ZB-MR2 Signal #2 Phase: ZB-MR1
 Signal #1 Info : 30M x 0.32mm x0.2 Signal #2 Info : 30M x 0.32mm x 0.50µm



Instrument : ECD_D
 ClientSampleId : BFSM0
 Manual Integrations APPROVED
 mohammad
 3/29/2019 10:18:19 AM