

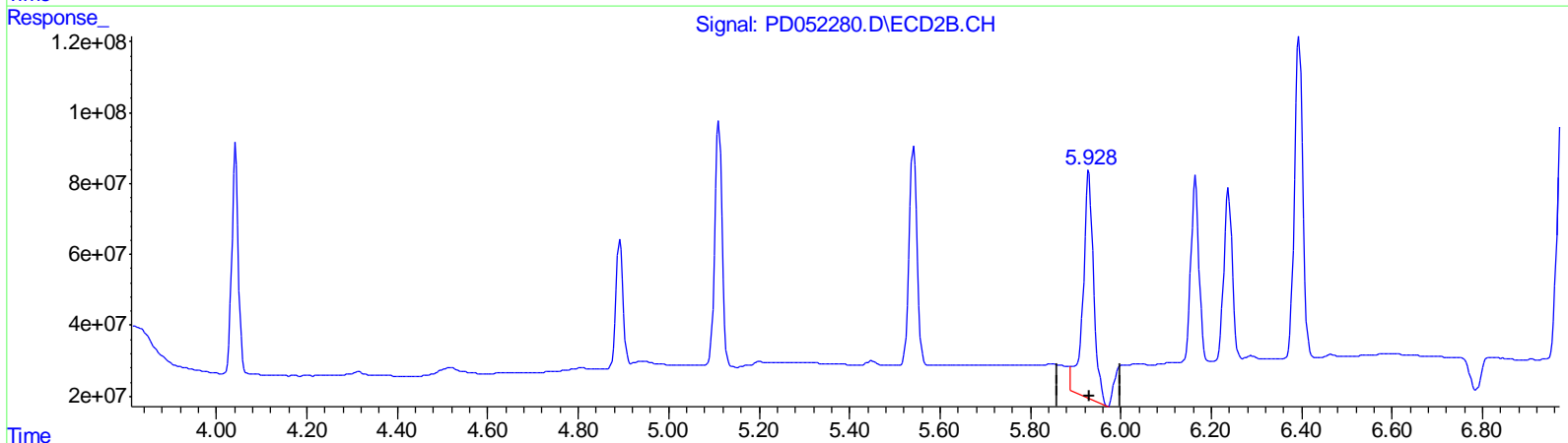
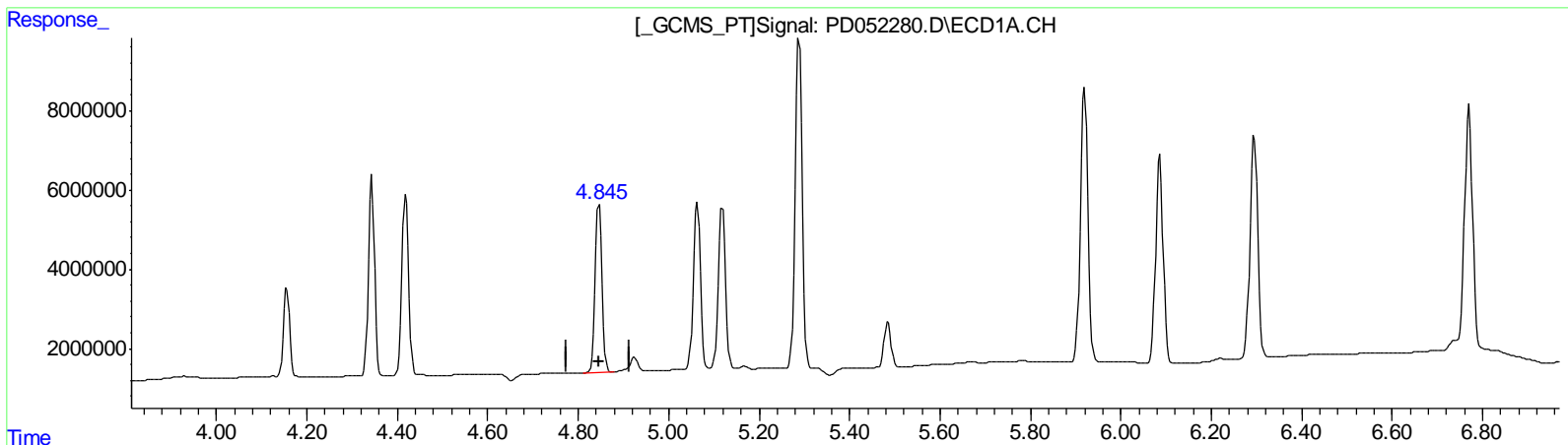
Data Path : Z:\pestpcbsrv\HPCHEM1\ECD_D\Data\PD032819\
 Data File : PD052280.D
 Signal(s) : Signal #1: ECD1A.CH Signal #2: ECD2B.CH
 Acq On : 29 Mar 2019 8:18
 Operator : AJ\SJ
 Sample : INDB338
 Misc :
 ALS Vial : 22 Sample Multiplier: 1

Instrument :
 ECD_D
LabSampleId :
 INDB338

Manual Integrations
APPROVED
 mohammad
 3/29/2019 10:18:27 AM

Integration File signal 1: autoint1.e
 Integration File signal 2: autoint2.e
 Quant Time: Mar 29 08:47:04 2019
 Quant Method : Z:\pestpcbsrv\HPCHEM1\ECD_D\Method\PD032519CLP.M
 Quant Title : GC Extractables
 QLast Update : Mon Mar 25 18:59:03 2019
 Response via : Initial Calibration
 Integrator: ChemStation 6890 Scale Mode: Large solvent peaks clipped

Volume Inj. : 1 µl
 Signal #1 Phase : ZB-MR2 Signal #2 Phase: ZB-MR1
 Signal #1 Info : 30M x 0.32mm x0.2 Signal #2 Info : 30M x 0.32mm x 0.50µm



QEdit

(8) Heptachlor epoxide (B)
 4.846min 22.268 ng/ml
 response 44968305

(8) Heptachlor epoxide #2 (B)
 5.930min 31.723 ng/ml
 response 1080700364

(+) = Expected Retention Time

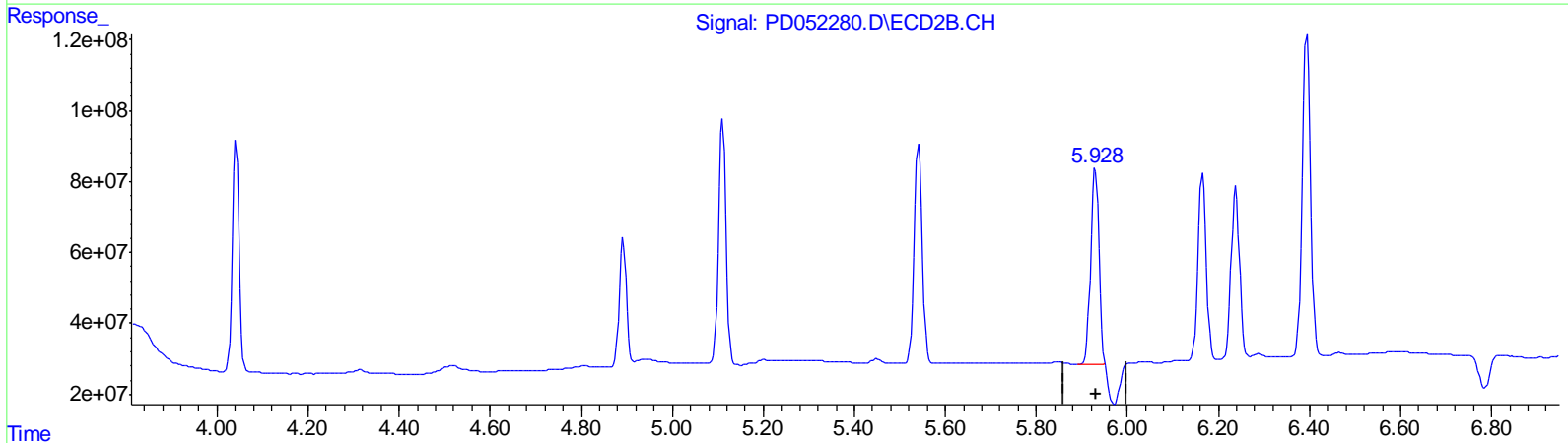
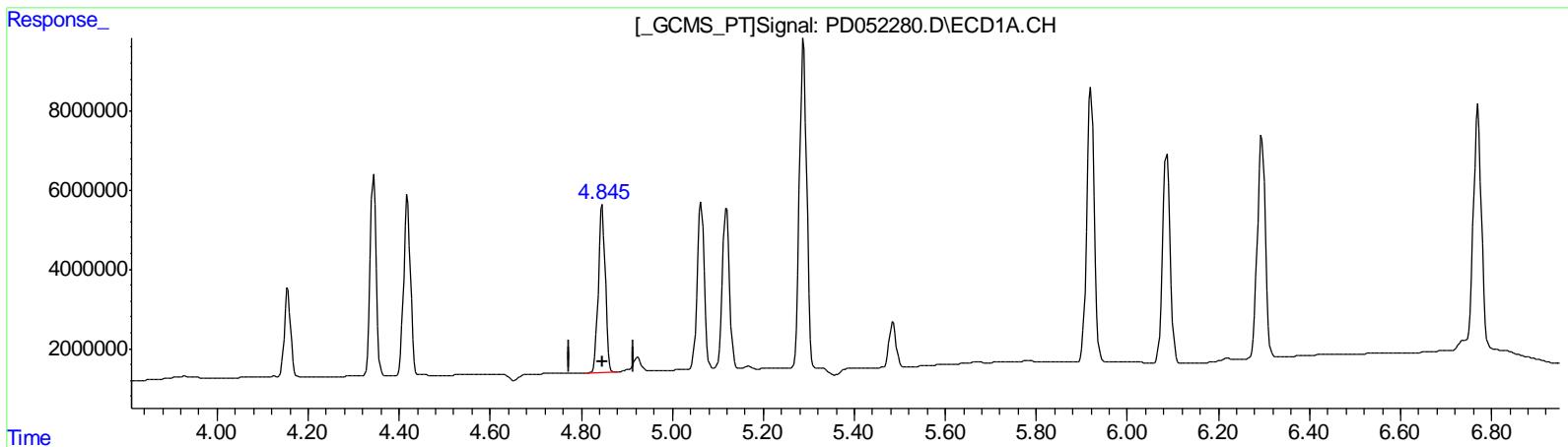
Data Path : Z:\pestpcbsrv\HPCHEM1\ECD_D\Data\PD032819\
 Data File : PD052280.D
 Signal(s) : Signal #1: ECD1A.CH Signal #2: ECD2B.CH
 Acq On : 29 Mar 2019 8:18
 Operator : AJ\SJ
 Sample : INDB338
 Misc :
 ALS Vial : 22 Sample Multiplier: 1

Instrument :
 ECD_D
LabSampleID :
 INDB338

Manual Integrations
APPROVED
 mohammad
 3/29/2019 10:18:27 AM

Integration File signal 1: autoint1.e
 Integration File signal 2: autoint2.e
 Quant Time: Mar 29 08:47:04 2019
 Quant Method : Z:\pestpcbsrv\HPCHEM1\ECD_D\Method\PD032519CLP.M
 Quant Title : GC Extractables
 QLast Update : Mon Mar 25 18:59:03 2019
 Response via : Initial Calibration
 Integrator: ChemStation 6890 Scale Mode: Large solvent peaks clipped

Volume Inj. : 1 µl
 Signal #1 Phase : ZB-MR2 Signal #2 Phase: ZB-MR1
 Signal #1 Info : 30M x 0.32mm x0.2 Signal #2 Info : 30M x 0.32mm x 0.50µm



QEdit

(8) Heptachlor epoxide (B)
 4.846min 22.268 ng/ml
 response 44968305

(8) Heptachlor epoxide #2 (B)
 5.928min 20.767 ng/ml m
 response 707488031

(+) = Expected Retention Time

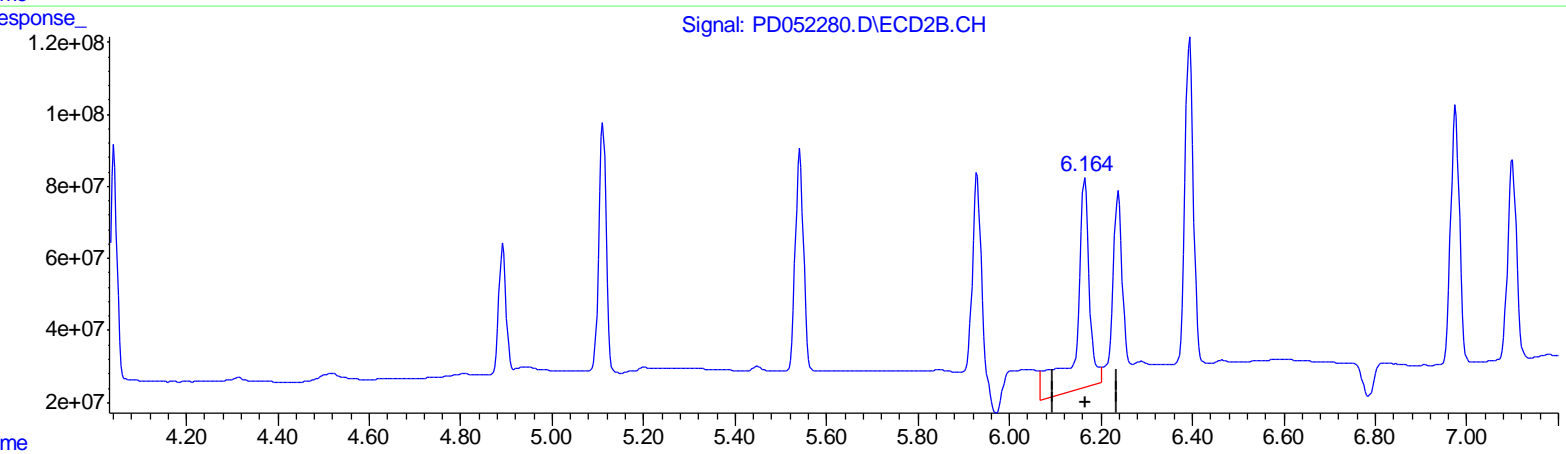
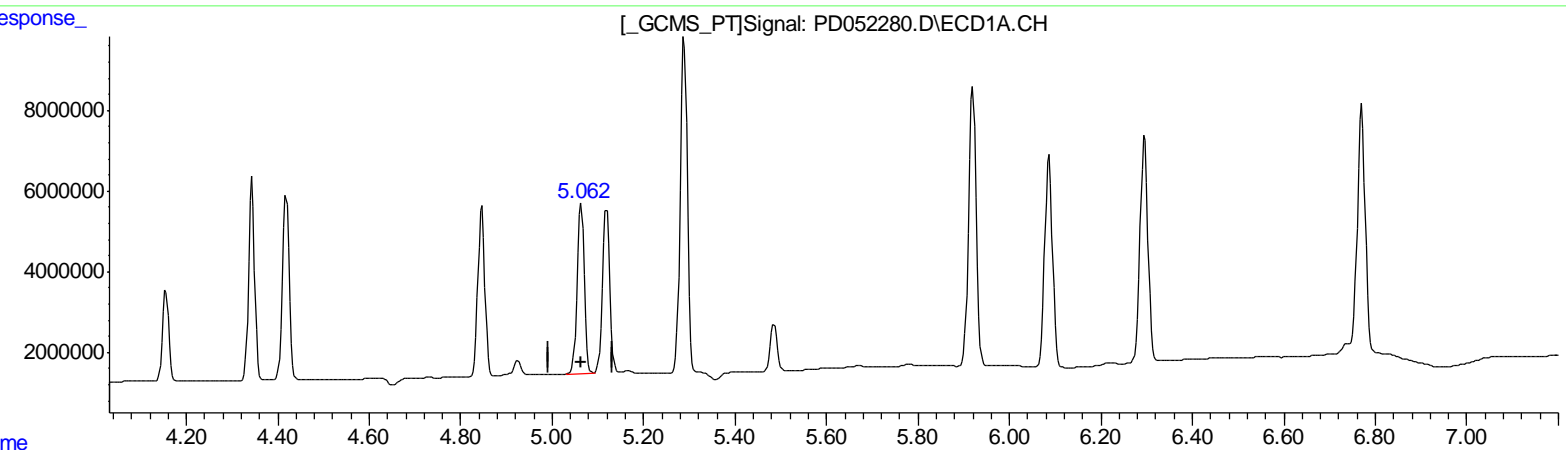
Data Path : Z:\pestpcbsrv\HPCHEM1\ECD_D\Data\PD032819\
 Data File : PD052280.D
 Signal(s) : Signal #1: ECD1A.CH Signal #2: ECD2B.CH
 Acq On : 29 Mar 2019 8:18
 Operator : AJ\SJ
 Sample : INDB338
 Misc :
 ALS Vial : 22 Sample Multiplier: 1

Instrument :
 ECD_D
LabSampleID :
 INDB338

Manual Integrations
APPROVED
 mohammad
 3/29/2019 10:18:27 AM

Integration File signal 1: autoint1.e
 Integration File signal 2: autoint2.e
 Quant Time: Mar 29 08:47:04 2019
 Quant Method : Z:\pestpcbsrv\HPCHEM1\ECD_D\Method\PD032519CLP.M
 Quant Title : GC Extractables
 QLast Update : Mon Mar 25 18:59:03 2019
 Response via : Initial Calibration
 Integrator: ChemStation 6890 Scale Mode: Large solvent peaks clipped

Volume Inj. : 1 µl
 Signal #1 Phase : ZB-MR2 Signal #2 Phase: ZB-MR1
 Signal #1 Info : 30M x 0.32mm x0.2 Signal #2 Info : 30M x 0.32mm x 0.50µm



QEdit

(10) trans-Chlordane (B)
 5.063min 22.112 ng/ml
 response 45562894

(10) trans-Chlordane #2 (B)
 6.165min 34.198 ng/ml
 response 1161395234

(+) = Expected Retention Time

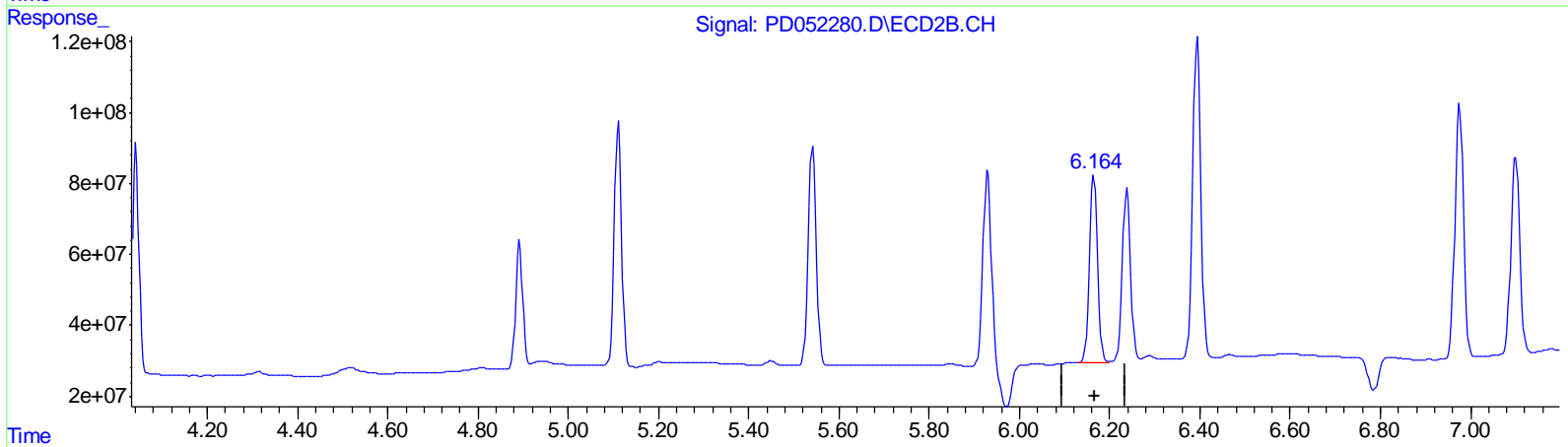
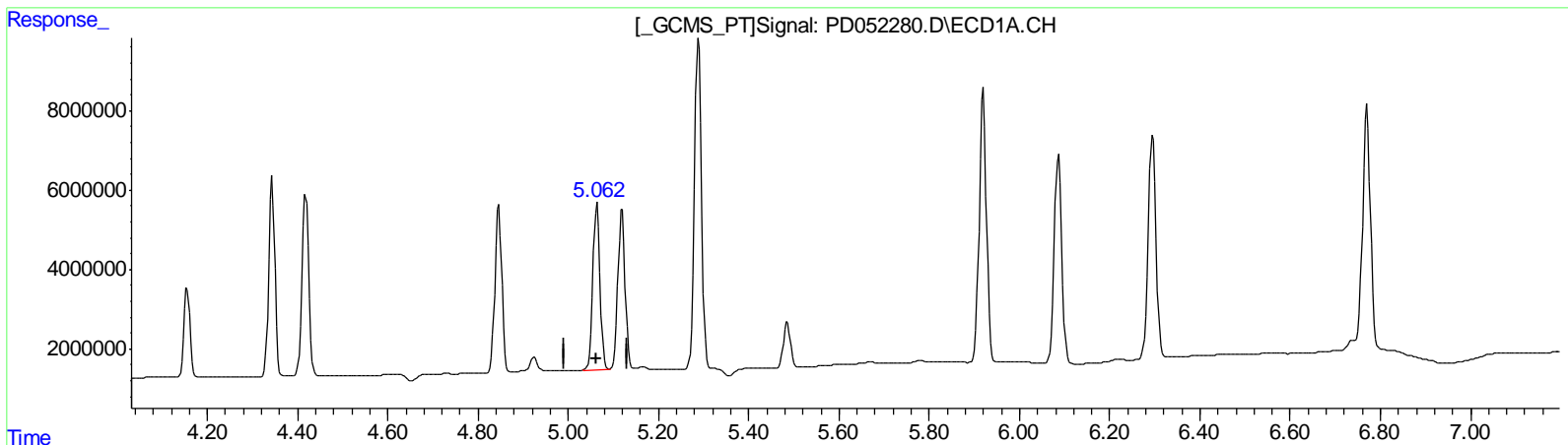
Data Path : Z:\pestpcbsrv\HPCHEM1\ECD_D\Data\PD032819\
 Data File : PD052280.D
 Signal(s) : Signal #1: ECD1A.CH Signal #2: ECD2B.CH
 Acq On : 29 Mar 2019 8:18
 Operator : AJ\SJ
 Sample : INDB338
 Misc :
 ALS Vial : 22 Sample Multiplier: 1

Instrument :
 ECD_D
LabSampleId :
 INDB338

Manual Integrations
APPROVED
 mohammad
 3/29/2019 10:18:27 AM

Integration File signal 1: autoint1.e
 Integration File signal 2: autoint2.e
 Quant Time: Mar 29 08:47:04 2019
 Quant Method : Z:\pestpcbsrv\HPCHEM1\ECD_D\Method\PD032519CLP.M
 Quant Title : GC Extractables
 QLast Update : Mon Mar 25 18:59:03 2019
 Response via : Initial Calibration
 Integrator: ChemStation 6890 Scale Mode: Large solvent peaks clipped

Volume Inj. : 1 µl
 Signal #1 Phase : ZB-MR2 Signal #2 Phase: ZB-MR1
 Signal #1 Info : 30M x 0.32mm x0.2 Signal #2 Info : 30M x 0.32mm x 0.50µm



QEdit

(10) trans-Chlordane (B)
 5.063min 22.112 ng/ml
 response 45562894

(10) trans-Chlordane #2 (B)
 6.164min 19.803 ng/ml m
 response 672540855

(+) = Expected Retention Time

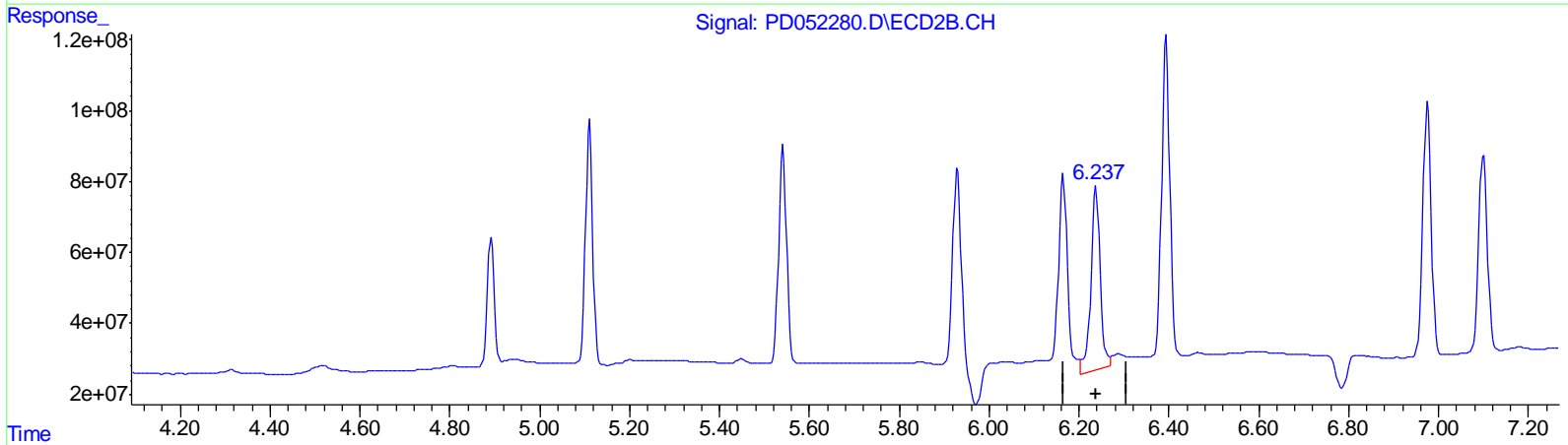
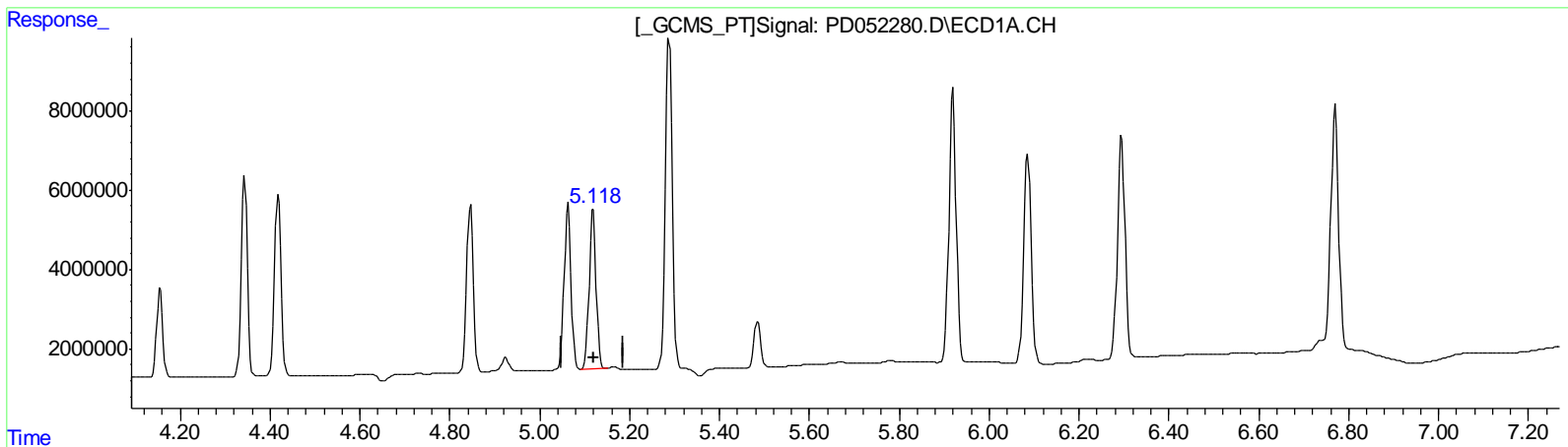
Data Path : Z:\pestpcbsrv\HPCHEM1\ECD_D\Data\PD032819\
 Data File : PD052280.D
 Signal(s) : Signal #1: ECD1A.CH Signal #2: ECD2B.CH
 Acq On : 29 Mar 2019 8:18
 Operator : AJ\SJ
 Sample : INDB338
 Misc :
 ALS Vial : 22 Sample Multiplier: 1

Instrument :
 ECD_D
LabSampleID :
 INDB338

Manual Integrations
APPROVED
 mohammad
 3/29/2019 10:18:27 AM

Integration File signal 1: autoint1.e
 Integration File signal 2: autoint2.e
 Quant Time: Mar 29 08:47:04 2019
 Quant Method : Z:\pestpcbsrv\HPCHEM1\ECD_D\Method\PD032519CLP.M
 Quant Title : GC Extractables
 QLast Update : Mon Mar 25 18:59:03 2019
 Response via : Initial Calibration
 Integrator: ChemStation 6890 Scale Mode: Large solvent peaks clipped

Volume Inj. : 1 µl
 Signal #1 Phase : ZB-MR2 Signal #2 Phase: ZB-MR1
 Signal #1 Info : 30M x 0.32mm x0.2 Signal #2 Info : 30M x 0.32mm x 0.50µm



QEdit

(11) cis-Chlordane (B)
 5.119min 22.048 ng/ml
 response 44450526

(11) cis-Chlordane #2 (B)
 6.238min 23.157 ng/ml
 response 751917869

(+) = Expected Retention Time

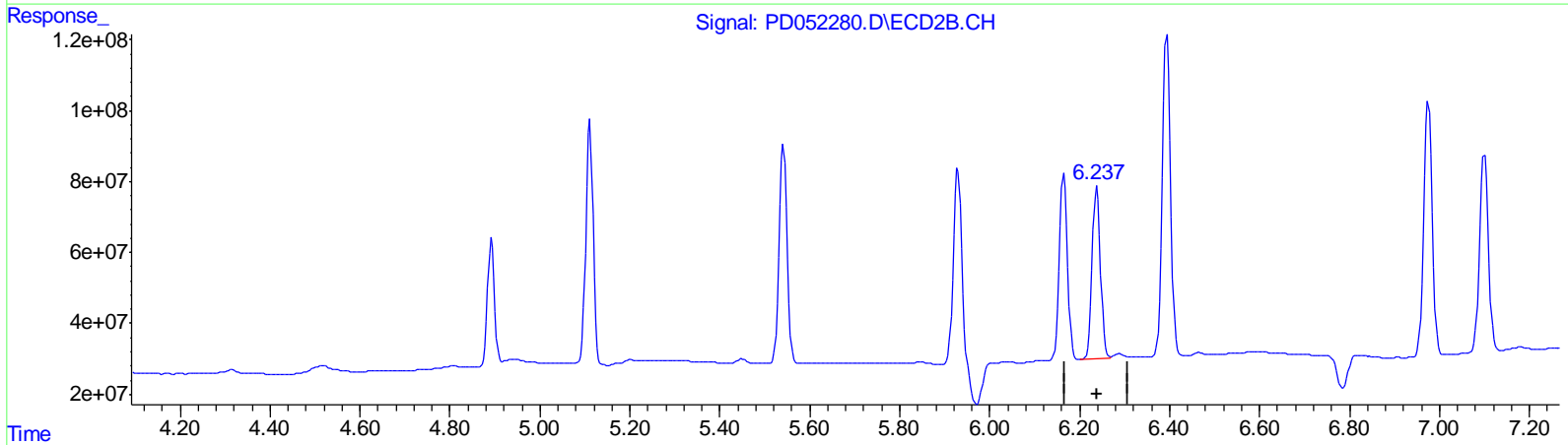
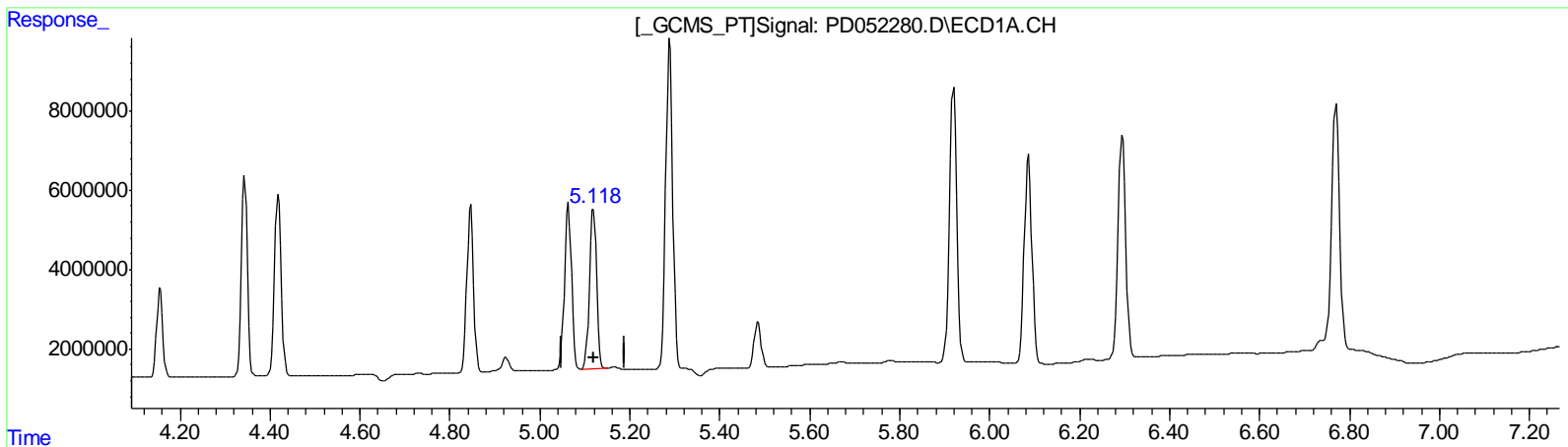
Data Path : Z:\pestpcbsrv\HPCHEM1\ECD_D\Data\PD032819\
 Data File : PD052280.D
 Signal(s) : Signal #1: ECD1A.CH Signal #2: ECD2B.CH
 Acq On : 29 Mar 2019 8:18
 Operator : AJ\SJ
 Sample : INDB338
 Misc :
 ALS Vial : 22 Sample Multiplier: 1

Instrument :
 ECD_D
LabSampleId :
 INDB338

Manual Integrations
APPROVED
 mohammad
 3/29/2019 10:18:27 AM

Integration File signal 1: autoint1.e
 Integration File signal 2: autoint2.e
 Quant Time: Mar 29 08:47:04 2019
 Quant Method : Z:\pestpcbsrv\HPCHEM1\ECD_D\Method\PD032519CLP.M
 Quant Title : GC Extractables
 QLast Update : Mon Mar 25 18:59:03 2019
 Response via : Initial Calibration
 Integrator: ChemStation 6890 Scale Mode: Large solvent peaks clipped

Volume Inj. : 1 µl
 Signal #1 Phase : ZB-MR2 Signal #2 Phase: ZB-MR1
 Signal #1 Info : 30M x 0.32mm x0.2 Signal #2 Info : 30M x 0.32mm x 0.50µm



QEdit

(11) cis-Chlordane (B)

5.119min 22.048 ng/ml

response 44450526

(11) cis-Chlordane #2 (B)

6.237min 19.375 ng/ml m

response 629113497

(+) = Expected Retention Time

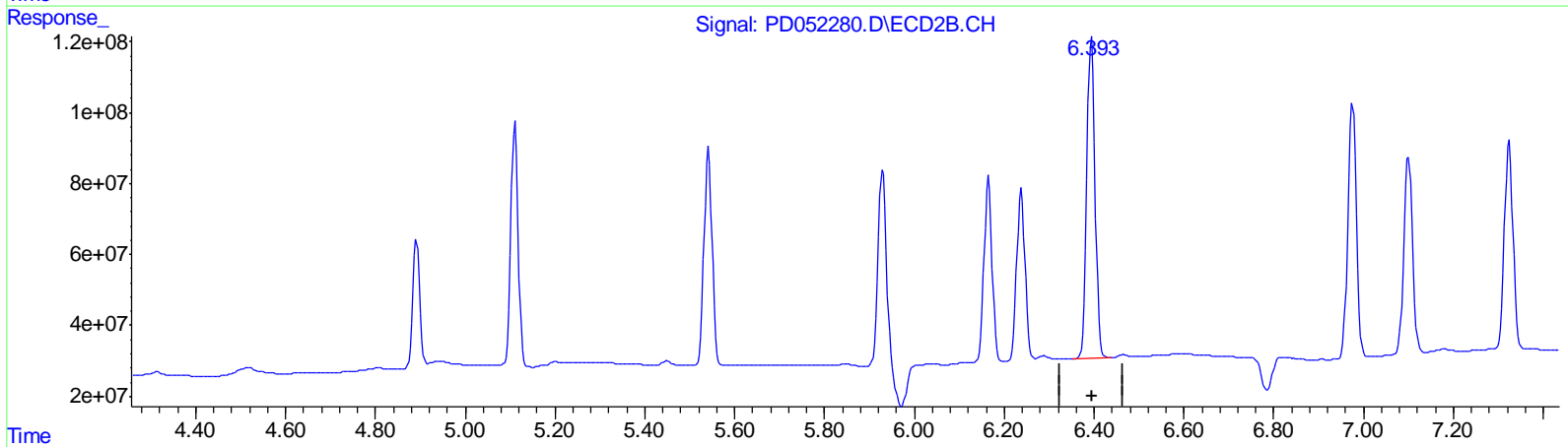
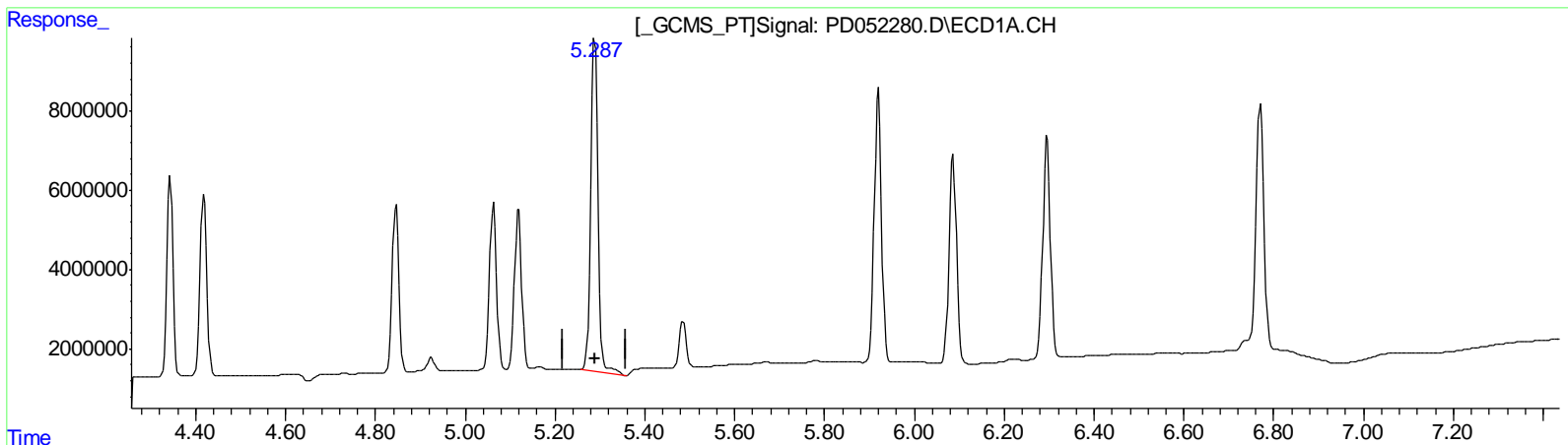
Data Path : Z:\pestpcbsrv\HPCHEM1\ECD_D\Data\PD032819\
 Data File : PD052280.D
 Signal(s) : Signal #1: ECD1A.CH Signal #2: ECD2B.CH
 Acq On : 29 Mar 2019 8:18
 Operator : AJ\SJ
 Sample : INDB338
 Misc :
 ALS Vial : 22 Sample Multiplier: 1

Instrument :
 ECD_D
LabSampleID :
 INDB338

Manual Integrations
APPROVED
 mohammad
 3/29/2019 10:18:27 AM

Integration File signal 1: autoint1.e
 Integration File signal 2: autoint2.e
 Quant Time: Mar 29 08:47:04 2019
 Quant Method : Z:\pestpcbsrv\HPCHEM1\ECD_D\Method\PD032519CLP.M
 Quant Title : GC Extractables
 QLast Update : Mon Mar 25 18:59:03 2019
 Response via : Initial Calibration
 Integrator: ChemStation 6890 Scale Mode: Large solvent peaks clipped

Volume Inj. : 1 µl
 Signal #1 Phase : ZB-MR2 Signal #2 Phase: ZB-MR1
 Signal #1 Info : 30M x 0.32mm x0.2 Signal #2 Info : 30M x 0.32mm x 0.50µm



QEdit

(12) 4,4'-DDE (B)
 5.289min 46.248 ng/ml
 response 93268272

(12) 4,4'-DDE #2 (B)
 6.394min 37.708 ng/ml
 response 1153656458

(+) = Expected Retention Time

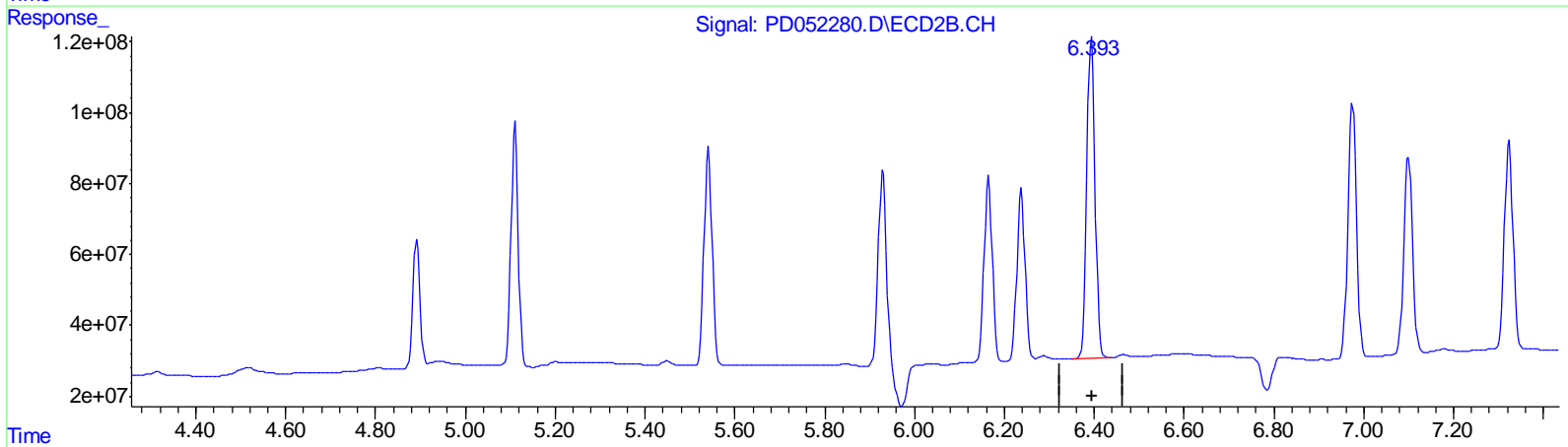
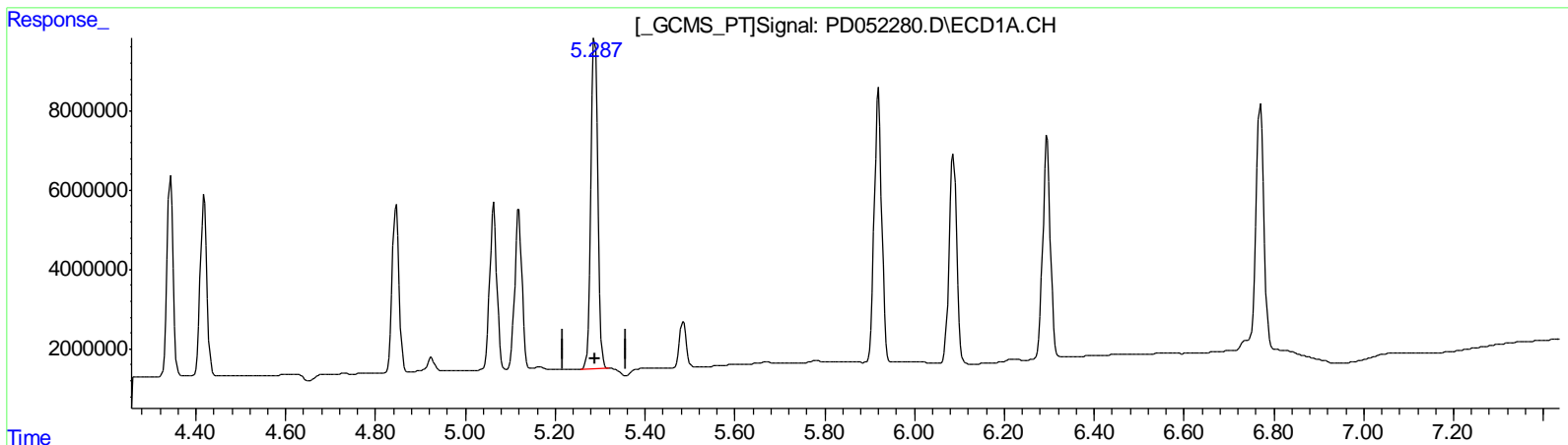
Data Path : Z:\pestpcbsrv\HPCHEM1\ECD_D\Data\PD032819\
 Data File : PD052280.D
 Signal(s) : Signal #1: ECD1A.CH Signal #2: ECD2B.CH
 Acq On : 29 Mar 2019 8:18
 Operator : AJ\SJ
 Sample : INDB338
 Misc :
 ALS Vial : 22 Sample Multiplier: 1

Instrument :
 ECD_D
LabSampleID :
 INDB338

Manual Integrations
APPROVED
 mohammad
 3/29/2019 10:18:27 AM

Integration File signal 1: autoint1.e
 Integration File signal 2: autoint2.e
 Quant Time: Mar 29 08:47:04 2019
 Quant Method : Z:\pestpcbsrv\HPCHEM1\ECD_D\Method\PD032519CLP.M
 Quant Title : GC Extractables
 QLast Update : Mon Mar 25 18:59:03 2019
 Response via : Initial Calibration
 Integrator: ChemStation 6890 Scale Mode: Large solvent peaks clipped

Volume Inj. : 1 µl
 Signal #1 Phase : ZB-MR2 Signal #2 Phase: ZB-MR1
 Signal #1 Info : 30M x 0.32mm x0.2 Signal #2 Info : 30M x 0.32mm x 0.50µm



- (12) 4,4'-DDE (B)
 5.287min 44.326 ng/ml m
 response 89391669
- (12) 4,4'-DDE #2 (B)
 6.394min 37.708 ng/ml
 response 1153656458

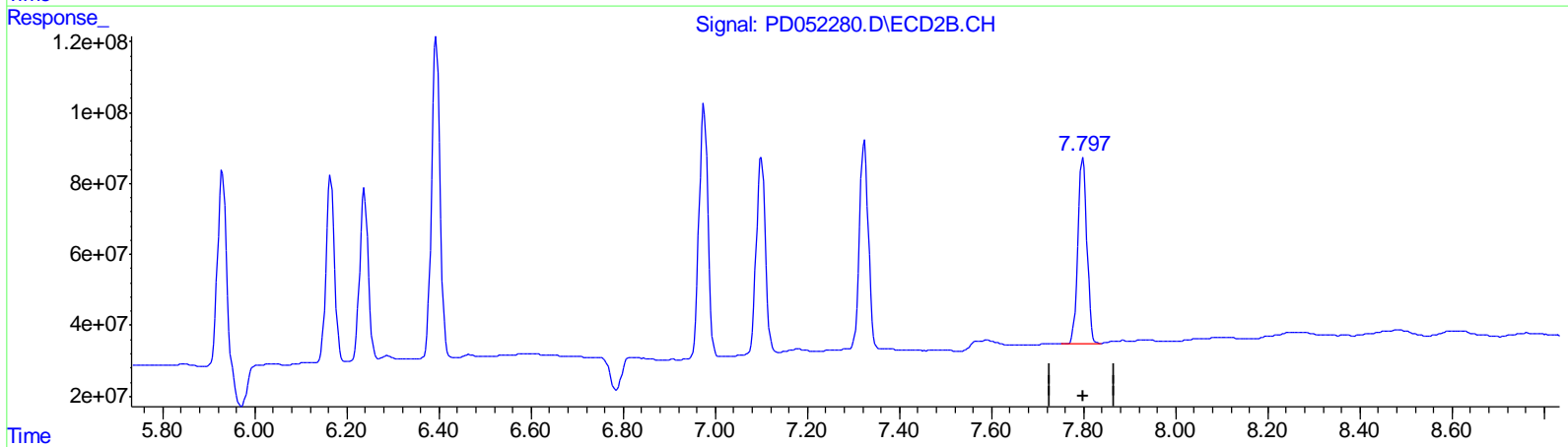
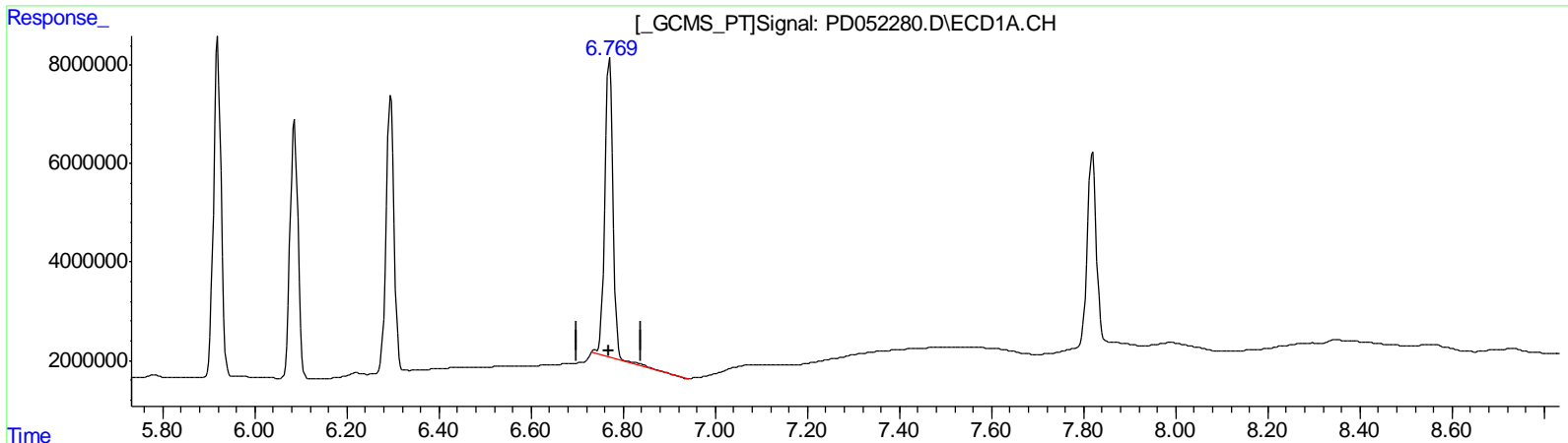
Data Path : Z:\pestpcbsrv\HPCHEM1\ECD_D\Data\PD032819\
 Data File : PD052280.D
 Signal(s) : Signal #1: ECD1A.CH Signal #2: ECD2B.CH
 Acq On : 29 Mar 2019 8:18
 Operator : AJ\SJ
 Sample : INDB338
 Misc :
 ALS Vial : 22 Sample Multiplier: 1

Instrument :
 ECD_D
LabSampleID :
 INDB338

Manual Integrations
APPROVED
 mohammad
 3/29/2019 10:18:27 AM

Integration File signal 1: autoint1.e
 Integration File signal 2: autoint2.e
 Quant Time: Mar 29 08:47:04 2019
 Quant Method : Z:\pestpcbsrv\HPCHEM1\ECD_D\Method\PD032519CLP.M
 Quant Title : GC Extractables
 QLast Update : Mon Mar 25 18:59:03 2019
 Response via : Initial Calibration
 Integrator: ChemStation 6890 Scale Mode: Large solvent peaks clipped

Volume Inj. : 1 µl
 Signal #1 Phase : ZB-MR2 Signal #2 Phase: ZB-MR1
 Signal #1 Info : 30M x 0.32mm x0.2 Signal #2 Info : 30M x 0.32mm x 0.50µm



QEdit

(21) Endrin ketone (B)
 6.770min 37.629 ng/ml
 response 74659172

(21) Endrin ketone #2 (B)
 7.799min 35.188 ng/ml
 response 705407787

(+) = Expected Retention Time

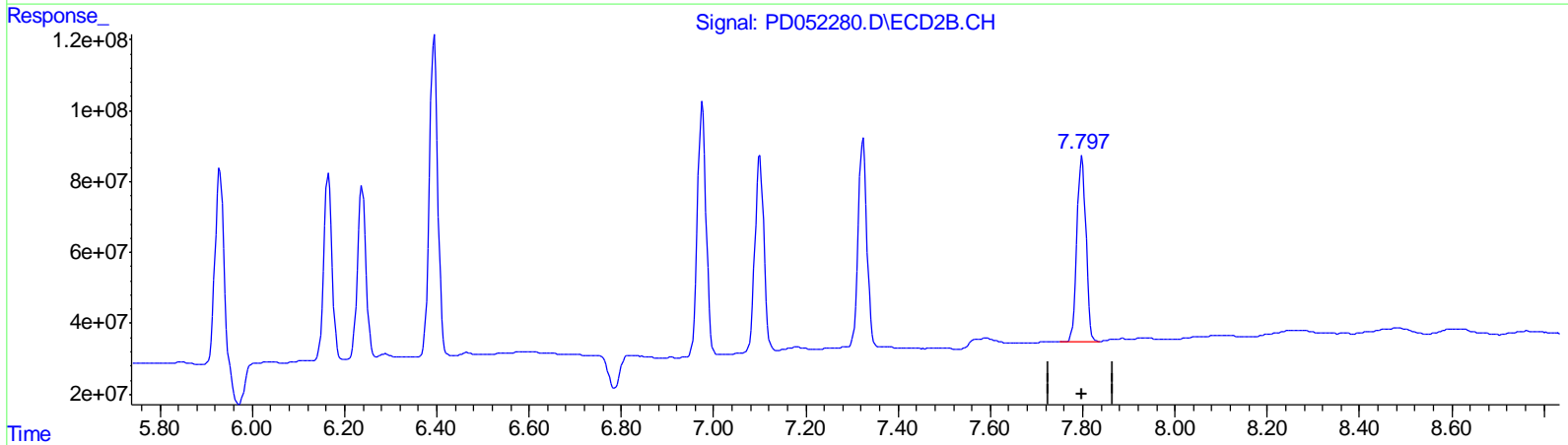
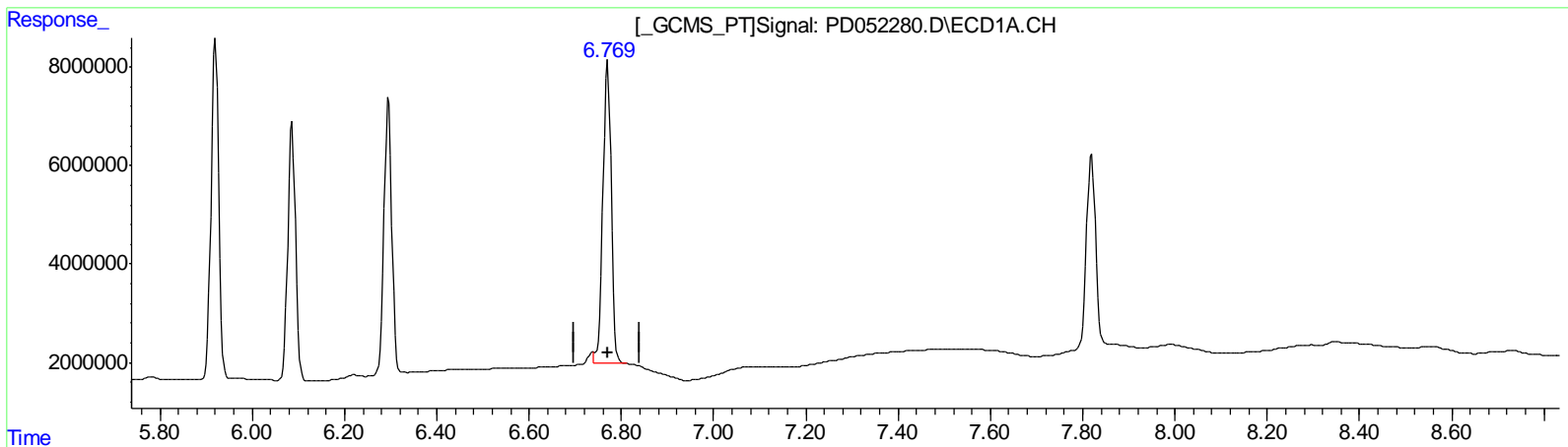
Data Path : Z:\pestpcbsrv\HPCHEM1\ECD_D\Data\PD032819\
 Data File : PD052280.D
 Signal(s) : Signal #1: ECD1A.CH Signal #2: ECD2B.CH
 Acq On : 29 Mar 2019 8:18
 Operator : AJ\SJ
 Sample : INDB338
 Misc :
 ALS Vial : 22 Sample Multiplier: 1

Instrument :
 ECD_D
LabSampleID :
 INDB338

Manual Integrations
APPROVED
 mohammad
 3/29/2019 10:18:27 AM

Integration File signal 1: autoint1.e
 Integration File signal 2: autoint2.e
 Quant Time: Mar 29 08:47:04 2019
 Quant Method : Z:\pestpcbsrv\HPCHEM1\ECD_D\Method\PD032519CLP.M
 Quant Title : GC Extractables
 QLast Update : Mon Mar 25 18:59:03 2019
 Response via : Initial Calibration
 Integrator: ChemStation 6890 Scale Mode: Large solvent peaks clipped

Volume Inj. : 1 µl
 Signal #1 Phase : ZB-MR2 Signal #2 Phase: ZB-MR1
 Signal #1 Info : 30M x 0.32mm x0.2 Signal #2 Info : 30M x 0.32mm x 0.50µm



QEdit

(21) Endrin ketone (B)
 6.769min 38.929 ng/ml m
 response 77237837

(21) Endrin ketone #2 (B)
 7.799min 35.188 ng/ml
 response 705407787

(+) = Expected Retention Time

Data Path : Z:\pestpcbsrv\HPCHEM1\ECD_D\Data\PD032819\
 Data File : PD052280.D
 Signal(s) : Signal #1: ECD1A.CH Signal #2: ECD2B.CH
 Acq On : 29 Mar 2019 8:18
 Operator : AJ\SJ
 Sample : INDB338
 Misc :
 ALS Vial : 22 Sample Multiplier: 1

Instrument :
 ECD_D
 LabSampleID :
 INDB338

Manual Integrations
 APPROVED

mohammad
 3/29/2019 10:18:27 AM

Integration File signal 1: autoint1.e
 Integration File signal 2: autoint2.e
 Quant Time: Mar 29 08:47:04 2019
 Quant Method : Z:\pestpcbsrv\HPCHEM1\ECD_D\Method\PD032519CLP.M
 Quant Title : GC Extractables
 QLast Update : Mon Mar 25 18:59:03 2019
 Response via : Initial Calibration
 Integrator: ChemStation 6890 Scale Mode: Large solvent peaks clipped

Volume Inj. : 1 µl
 Signal #1 Phase : ZB-MR2 Signal #2 Phase: ZB-MR1
 Signal #1 Info : 30M x 0.32mm x0.2 Signal #2 Info : 30M x 0.32mm x 0.50µm

Compound	RT#1	RT#2	Resp#1	Resp#2	ng/ml	ng/ml

System Monitoring Compounds						
1) SA Tetrachlo...	3.221	4.042	32050412	666.5E6	22.580	22.906
27) SA Decachlor...	7.819	9.157	54959430	534.2E6	35.098	34.607
Target Compounds						
5) MB Aldrin	4.418	5.542	47230525	761.7E6	22.672	20.459
6) B beta-BHC	4.156	4.892	21189628	392.3E6	22.141	21.379
7) B delta-BHC	4.344	5.111	47019450	778.4E6	21.394	19.618
8) B Heptachlo...	4.846	5.928	44968305	707.5E6	22.268	20.767m
10) B trans-Chl...	5.063	6.164	45562894	672.5E6	22.112	19.803m
11) B cis-Chlor...	5.119	6.237	44450526	629.1E6	22.048	19.375m
12) B 4,4'-DDE	5.287	6.394	89391669	1153.7E6	44.326m	37.708
15) B Endosulfa...	5.920	6.976	78688295	946.4E6	41.125	37.330
18) B Endrin al...	6.086	7.100	62259840	761.4E6	40.604	37.175
19) B Endosulfa...	6.295	7.324	67288600	779.1E6	38.657	34.669
21) B Endrin ke...	6.769	7.799	77237837	705.4E6	38.929m	35.188

AJ
 04/01/19

(f)=RT Delta > 1/2 Window (#)=Amounts differ by > 25% (m)=manual int.