

Data Path : Z:\pestpcbsrv\HPCHEM1\ECD_D\Data\PD032822\
 Data File : PD068807.D
 Signal(s) : Signal #1: ECD1A.ch Signal #2: ECD2B.ch
 Acq On : 28 Mar 2022 15:31
 Operator : AR\AJ
 Sample : PB143674TB
 Misc :
 ALS Vial : 17 Sample Multiplier: 1

Instrument :
 ECD_D
 ClientSampleId :

Integration File signal 1: autoint1.e
 Integration File signal 2: autoint2.e
 Quant Time: Mar 29 01:48:48 2022
 Quant Method : Z:\pestpcbsrv\HPCHEM1\ECD_D\Method\PD031222.M
 Quant Title : GC Extractables
 QLast Update : Mon Mar 14 03:30:32 2022
 Response via : Initial Calibration
 Integrator: ChemStation

Volume Inj. : 2 µl
 Signal #1 Phase : ZB-MR2 Signal #2 Phase: ZB-MR1
 Signal #1 Info : 30M x 0.32mm x0.2 Signal #2 Info : 30M x 0.32mm x 0.50µm

Compound	RT#1	RT#2	Resp#1	Resp#2	ng/ml	ng/ml

System Monitoring Compounds						
1) SA Tetrachlo...	3.447	4.174	21158534	182.1E6	17.426	19.049
28) SA Decachlor...	8.206	9.371	24094143	117.3E6	19.071	20.707
Target Compounds						
2) A alpha-BHC	0.000	4.568	0	55382	N.D.	0.004 #
3) MA gamma-BHC...	0.000	4.847	0	401593	N.D.	0.032 #
7) B delta-BHC	0.000	5.230f	0	2344756	N.D.	0.195 #
8) B Heptachlo...	0.000	6.060f	0	222714	N.D.	0.021 #
10) B gamma-Chl...	5.411f	6.339	-50200	2519651	N.D.	0.244
17) MA 4,4'-DDT	0.000	7.345	0	991296	N.D.	0.135 #
21) B Endrin ke...	0.000	7.968	0	1646913	N.D.	0.213 #
22) Mirex	0.000	8.430	0	2012827	N.D.	0.367 #
23) Chlordane-1	4.345f	0.000	206028	0	4.855	N.D. #
24) Chlordane-2	0.000	5.645f	0	455754	N.D.	1.192 #
25) Chlordane-3	5.411f	6.339	-50200	2519651	N.D.	1.875
27) Chlordane-5	0.000	7.199f	0	135858	N.D.	0.466 #

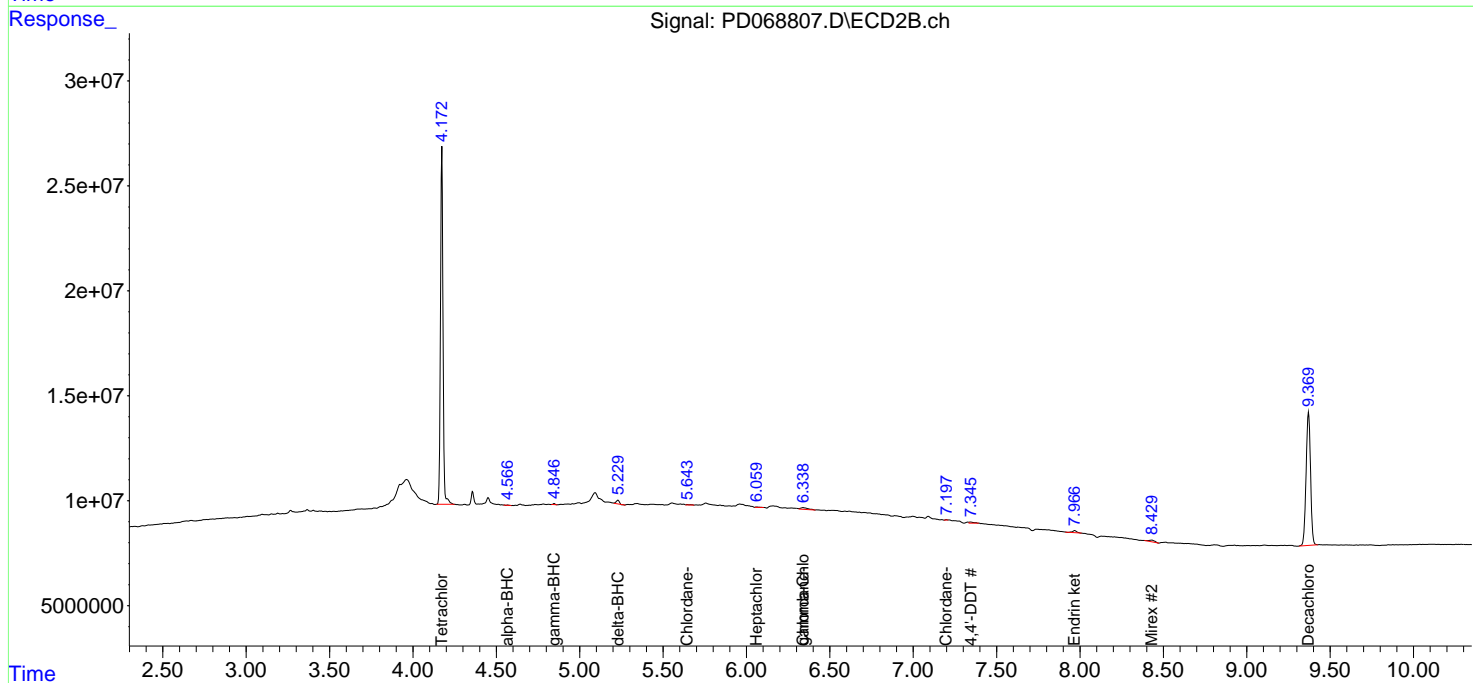
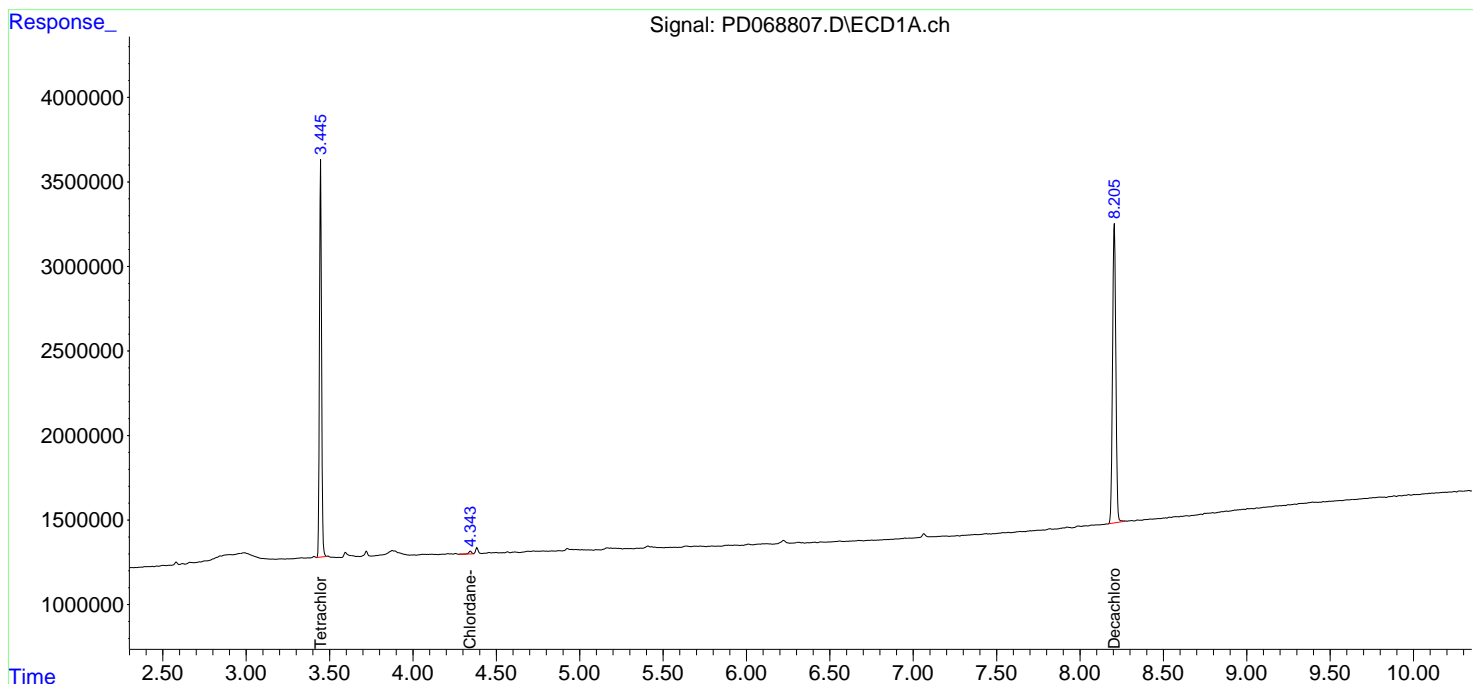
(f)=RT Delta > 1/2 Window (#)=Amounts differ by > 25% (m)=manual int.

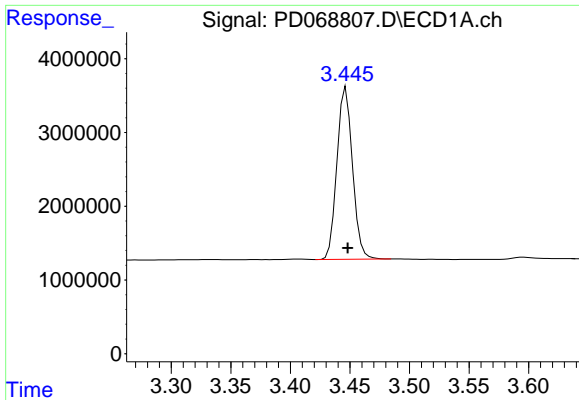
Data Path : Z:\pestpcbsrv\HPCHEM1\ECD_D\Data\PD032822\
 Data File : PD068807.D
 Signal(s) : Signal #1: ECD1A.ch Signal #2: ECD2B.ch
 Acq On : 28 Mar 2022 15:31
 Operator : AR\AJ
 Sample : PB143674TB
 Misc :
 ALS Vial : 17 Sample Multiplier: 1

Instrument :
 ECD_D
 ClientSampleId :

Integration File signal 1: autoint1.e
 Integration File signal 2: autoint2.e
 Quant Time: Mar 29 01:48:48 2022
 Quant Method : Z:\pestpcbsrv\HPCHEM1\ECD_D\Method\PD031222.M
 Quant Title : GC Extractables
 QLast Update : Mon Mar 14 03:30:32 2022
 Response via : Initial Calibration
 Integrator: ChemStation

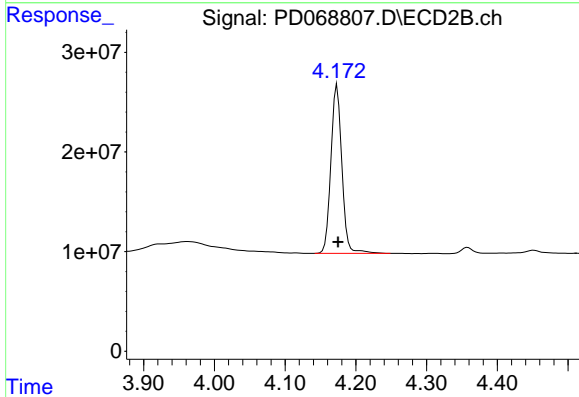
Volume Inj. : 2 µl
 Signal #1 Phase : ZB-MR2 Signal #2 Phase: ZB-MR1
 Signal #1 Info : 30M x 0.32mm x0.2 Signal #2 Info : 30M x 0.32mm x 0.50µm



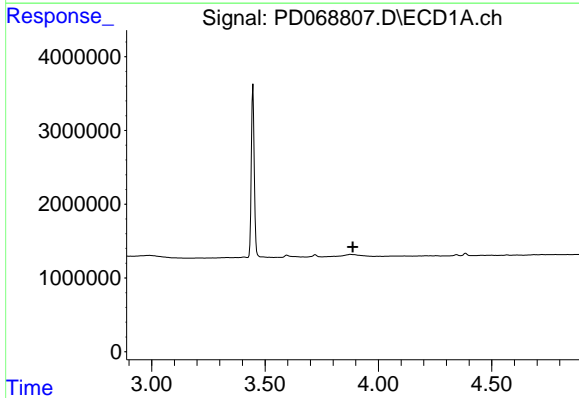


#1 Tetrachloro-m-xylene
 R.T.: 3.447 min
 Delta R.T.: -0.001 min
 Response: 21158534
 Conc: 17.43 ng/ml

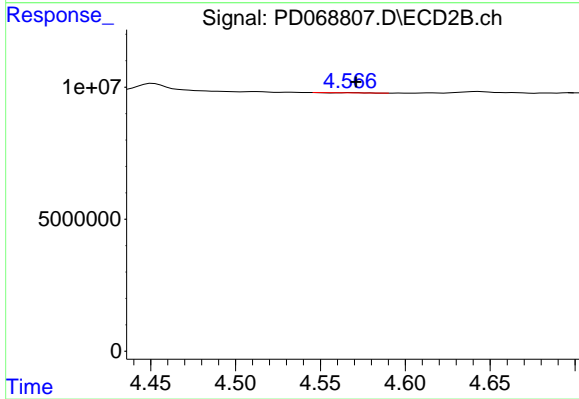
Instrument :
 ECD_D
 ClientSampleId :



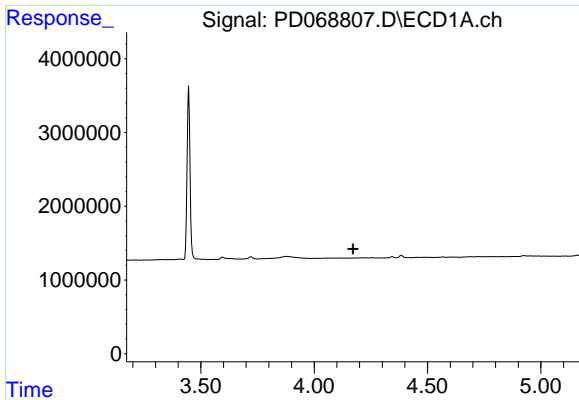
#1 Tetrachloro-m-xylene
 R.T.: 4.174 min
 Delta R.T.: -0.001 min
 Response: 182120947
 Conc: 19.05 ng/ml



#2 alpha-BHC
 R.T.: 0.000 min
 Exp R.T. : 3.888 min
 Response: 0
 Conc: N.D.



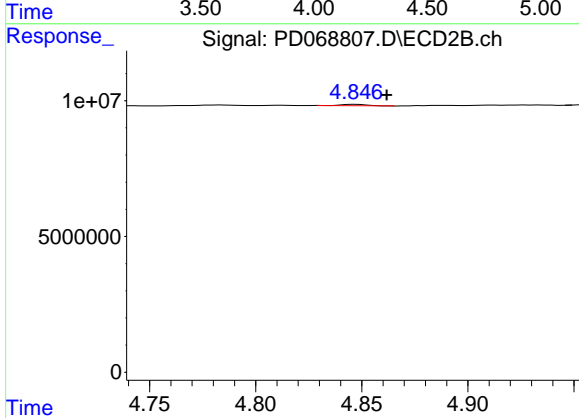
#2 alpha-BHC
 R.T.: 4.568 min
 Delta R.T.: -0.003 min
 Response: 55382
 Conc: 0.00 ng/ml



#3 gamma-BHC (Lindane)

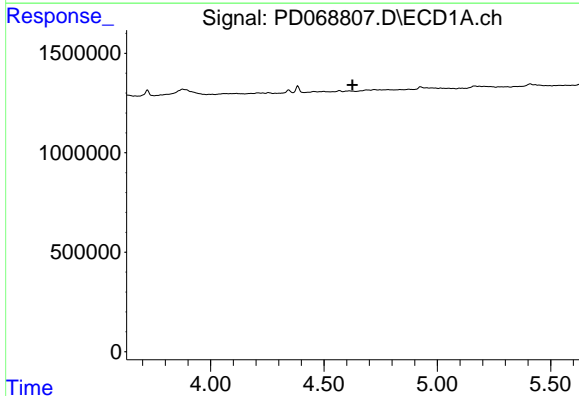
R.T.: 0.000 min
 Exp R.T.: 4.172 min
 Response: 0
 Conc: N.D.

Instrument :
 ECD_D
 ClientSampleId :



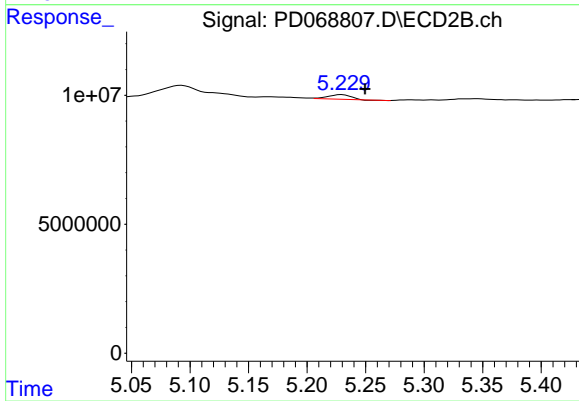
#3 gamma-BHC (Lindane)

R.T.: 4.847 min
 Delta R.T.: -0.014 min
 Response: 401593
 Conc: 0.03 ng/ml



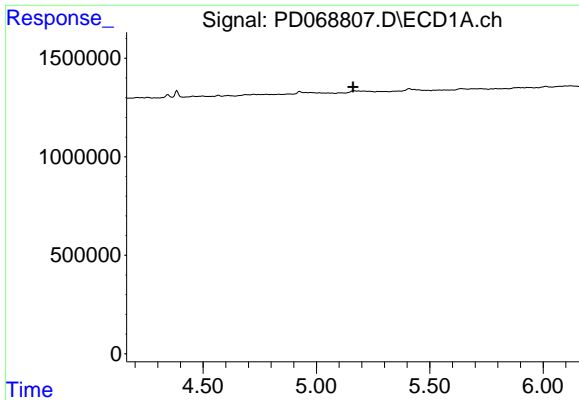
#7 delta-BHC

R.T.: 0.000 min
 Exp R.T.: 4.626 min
 Response: 0
 Conc: N.D.



#7 delta-BHC

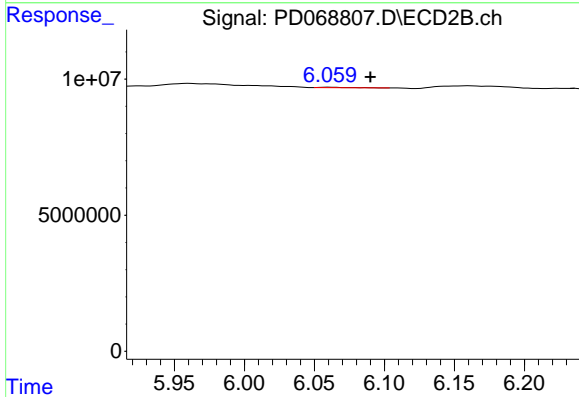
R.T.: 5.230 min
 Delta R.T.: -0.020 min
 Response: 2344756
 Conc: 0.19 ng/ml



#8 Heptachlor epoxide

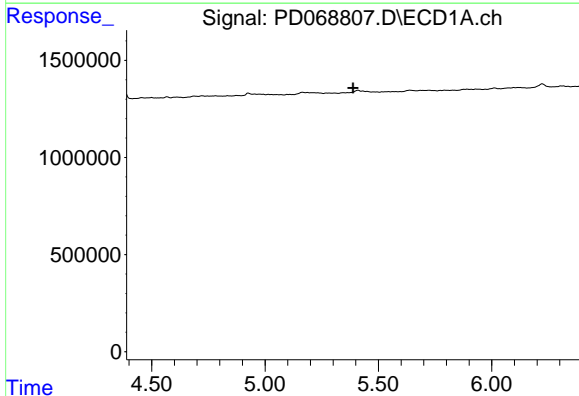
R.T.: 0.000 min
 Exp R.T.: 5.162 min
 Response: 0
 Conc: N.D.

Instrument :
 ECD_D
 ClientSampleId :



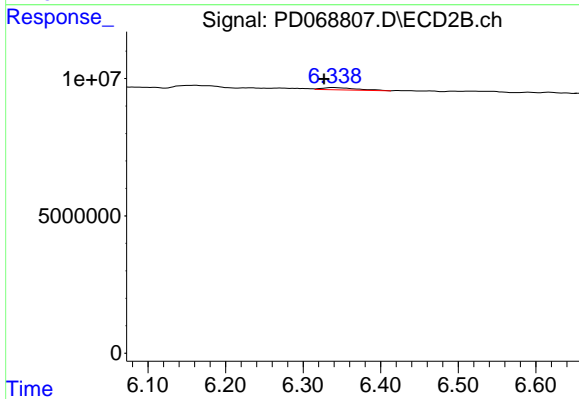
#8 Heptachlor epoxide

R.T.: 6.060 min
 Delta R.T.: -0.029 min
 Response: 222714
 Conc: 0.02 ng/ml



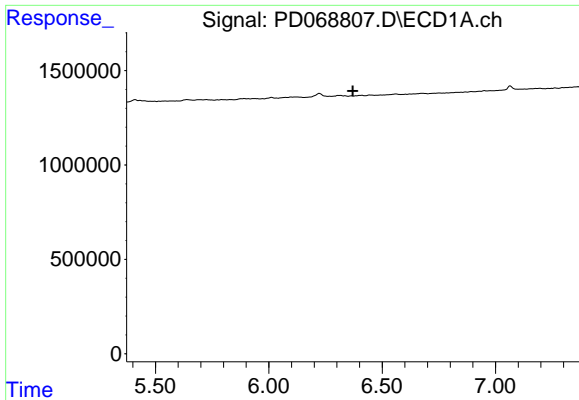
#10 gamma-Chlordane

R.T.: 5.411 min
 Delta R.T.: 0.023 min
 Response: -50200
 Conc: N.D.



#10 gamma-Chlordane

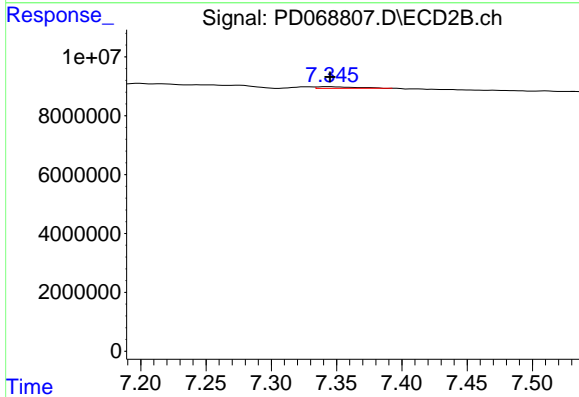
R.T.: 6.339 min
 Delta R.T.: 0.012 min
 Response: 2519651
 Conc: 0.24 ng/ml



#17 4,4'-DDT

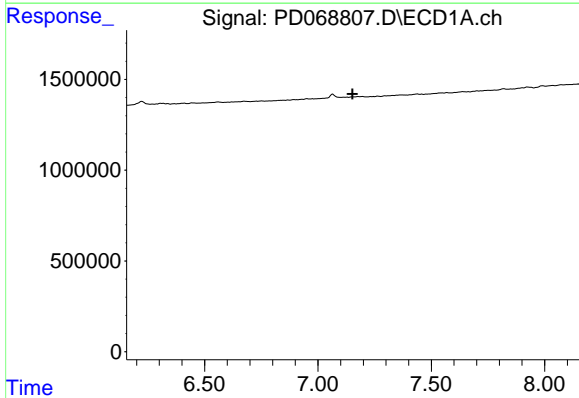
R.T.: 0.000 min
 Exp R.T. : 6.371 min
 Response: 0
 Conc: N.D.

Instrument :
 ECD_D
 ClientSampleId :



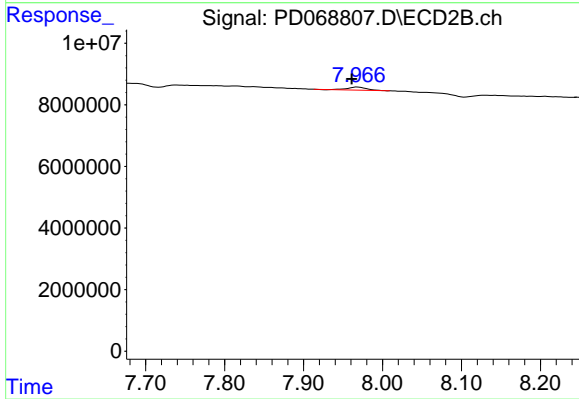
#17 4,4'-DDT

R.T.: 7.345 min
 Delta R.T.: 0.000 min
 Response: 991296
 Conc: 0.13 ng/ml



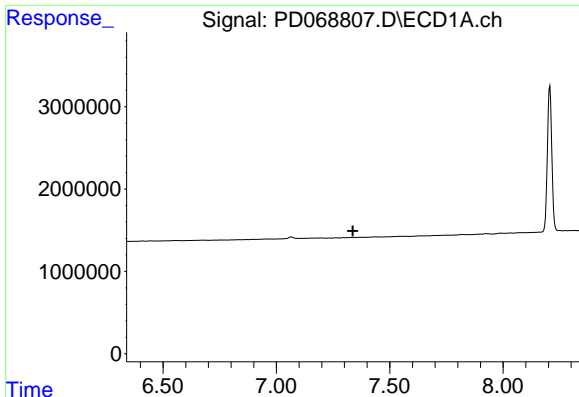
#21 Endrin ketone

R.T.: 0.000 min
 Exp R.T. : 7.153 min
 Response: 0
 Conc: N.D.



#21 Endrin ketone

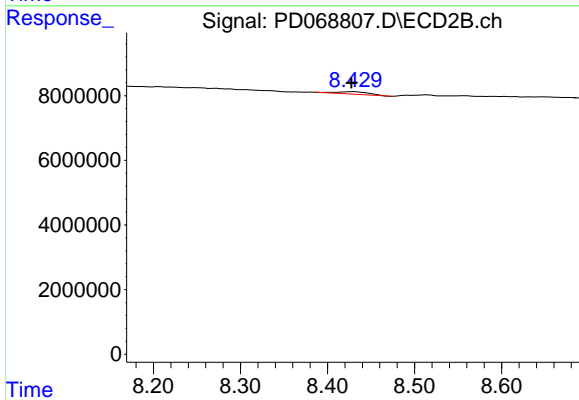
R.T.: 7.968 min
 Delta R.T.: 0.007 min
 Response: 1646913
 Conc: 0.21 ng/ml



#22 Mirex

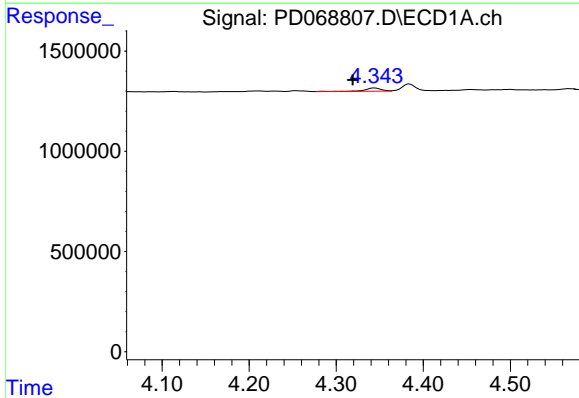
R.T.: 0.000 min
 Exp R.T.: 7.337 min
 Response: 0
 Conc: N.D.

Instrument :
 ECD_D
 ClientSampleId :



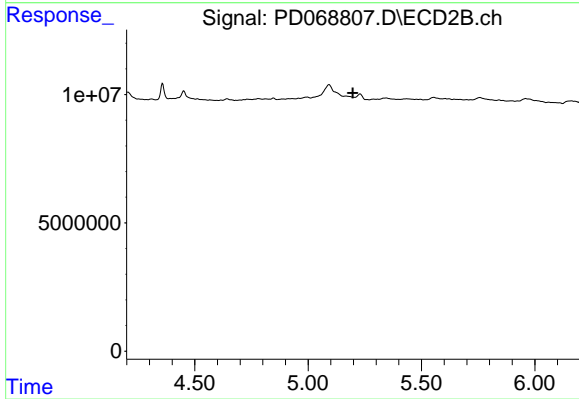
#22 Mirex

R.T.: 8.430 min
 Delta R.T.: 0.003 min
 Response: 2012827
 Conc: 0.37 ng/ml



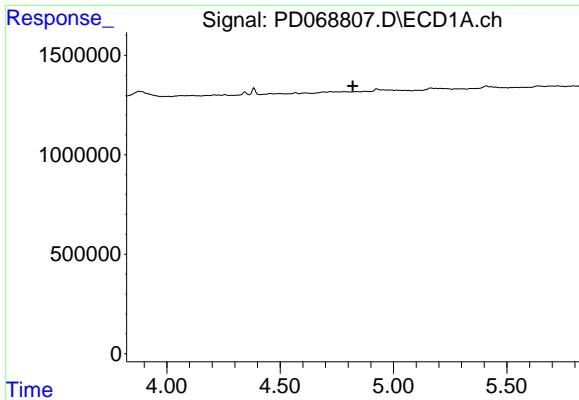
#23 Chlordane-1

R.T.: 4.345 min
 Delta R.T.: 0.026 min
 Response: 206028
 Conc: 4.86 ng/ml



#23 Chlordane-1

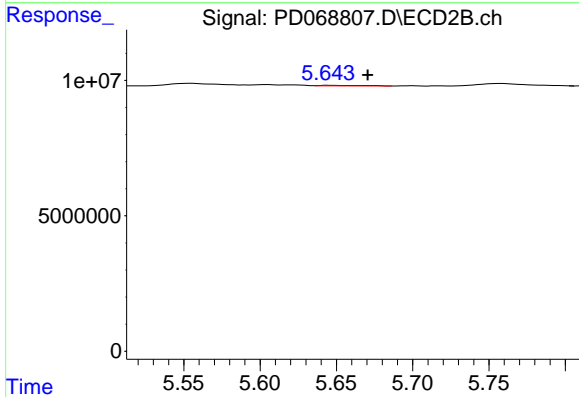
R.T.: 0.000 min
 Exp R.T.: 5.198 min
 Response: 0
 Conc: N.D.



#24 Chlordane-2

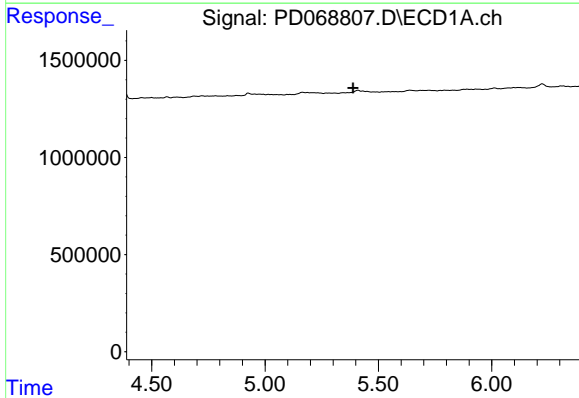
R.T.: 0.000 min
 Exp R.T.: 4.820 min
 Response: 0
 Conc: N.D.

Instrument :
 ECD_D
 ClientSampleId :



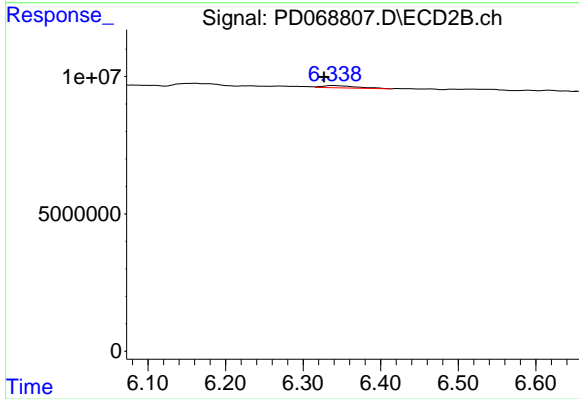
#24 Chlordane-2

R.T.: 5.645 min
 Delta R.T.: -0.026 min
 Response: 455754
 Conc: 1.19 ng/ml



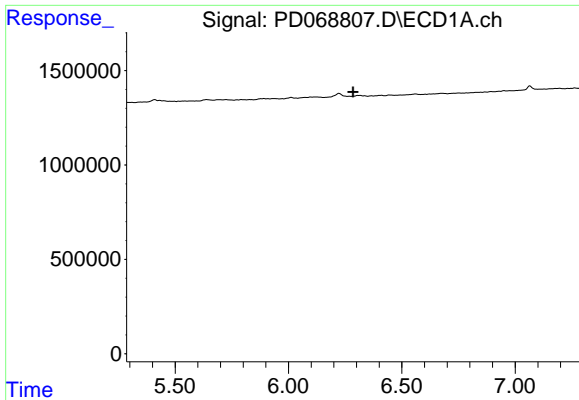
#25 Chlordane-3

R.T.: 5.411 min
 Delta R.T.: 0.022 min
 Response: -50200
 Conc: N.D.



#25 Chlordane-3

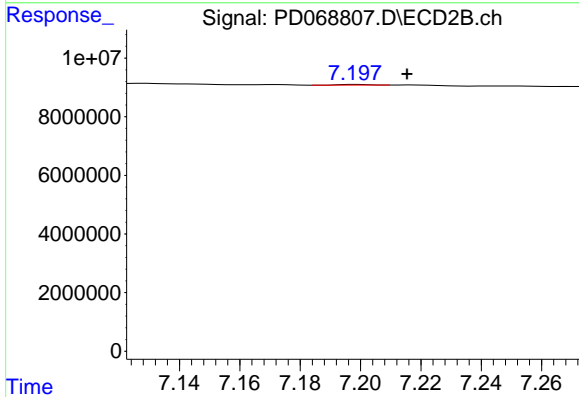
R.T.: 6.339 min
 Delta R.T.: 0.012 min
 Response: 2519651
 Conc: 1.88 ng/ml



#27 Chlordane-5

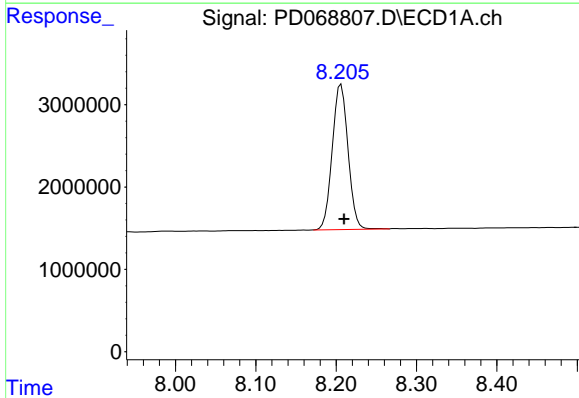
R.T.: 0.000 min
 Exp R.T.: 6.285 min
 Response: 0
 Conc: N.D.

Instrument :
 ECD_D
 ClientSampleId :



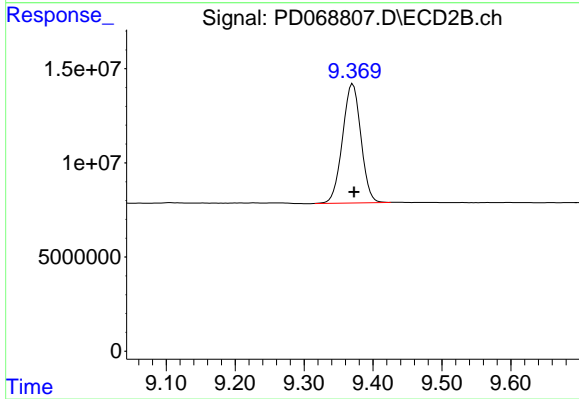
#27 Chlordane-5

R.T.: 7.199 min
 Delta R.T.: -0.017 min
 Response: 135858
 Conc: 0.47 ng/ml



#28 Decachlorobiphenyl

R.T.: 8.206 min
 Delta R.T.: -0.003 min
 Response: 24094143
 Conc: 19.07 ng/ml



#28 Decachlorobiphenyl

R.T.: 9.371 min
 Delta R.T.: -0.002 min
 Response: 117338335
 Conc: 20.71 ng/ml