

Data Path : Z:\pestpcbsrv\HPCHEM1\ECD_D\Data\PD032919\
 Data File : PD052298.D
 Signal(s) : Signal #1: ECD1A.CH Signal #2: ECD2B.CH
 Acq On : 29 Mar 2019 13:36
 Operator : AJ\SJ
 Sample : PTOXICC250
 Misc :
 ALS Vial : 18 Sample Multiplier: 1

Instrument :
 ECD_D
 ClientSampleId :

Integration File signal 1: autoint1.e
 Integration File signal 2: autoint2.e
 Quant Time: Mar 29 13:55:35 2019
 Quant Method : Z:\pestpcbsrv\HPCHEM1\ECD_D\Method\DTX032919.M
 Quant Title : GC Extractables
 QLast Update : Fri Mar 29 13:49:18 2019
 Response via : Initial Calibration
 Integrator: ChemStation 6890 Scale Mode: Large solvent peaks clipped

Volume Inj. : 1 µl
 Signal #1 Phase : ZB-MR2 Signal #2 Phase: ZB-MR1
 Signal #1 Info : 30M x 0.32mm x0.2 Signal #2 Info : 30M x 0.32mm x 0.50µm

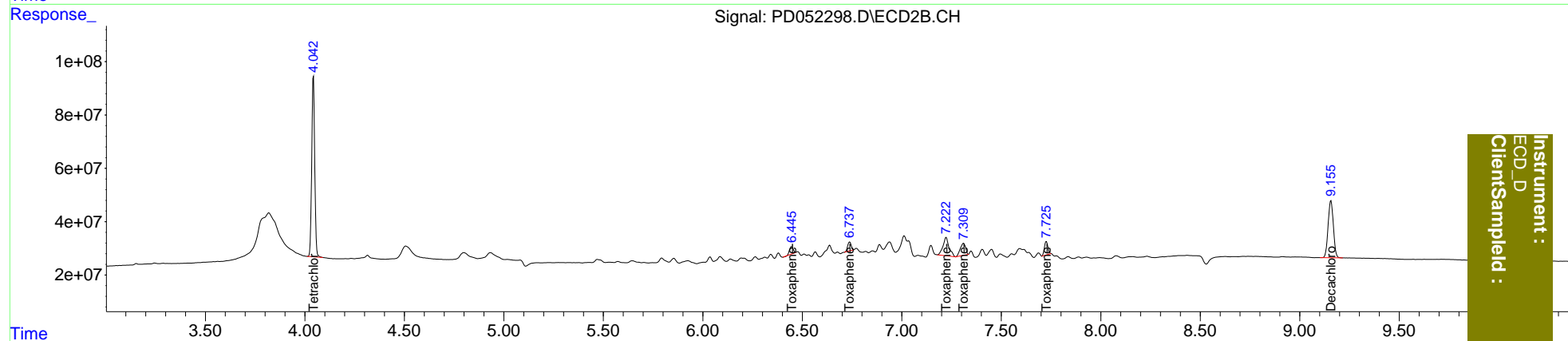
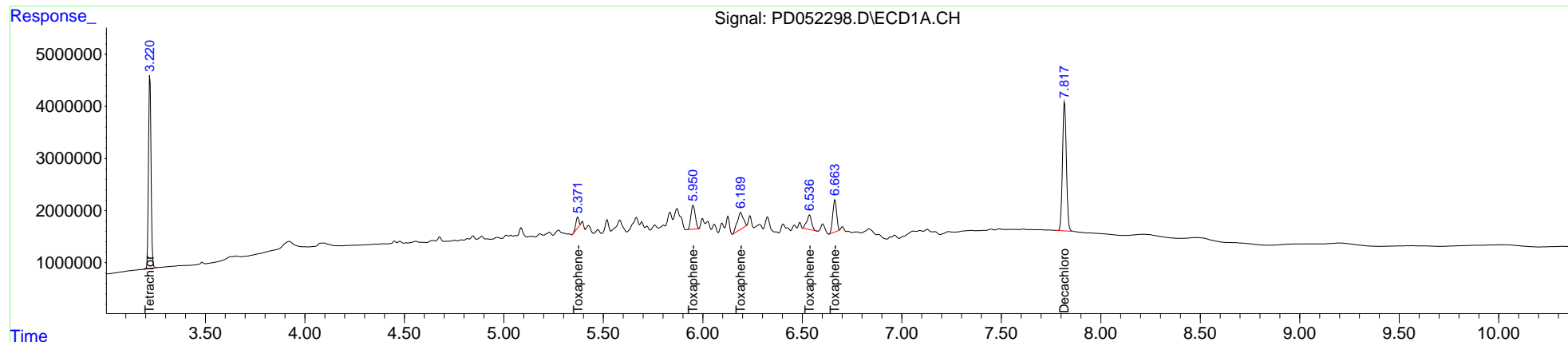
| Compound | RT#1 | RT#2 | Resp#1 | Resp#2 | ng/ml | ng/ml |
|-----------------------------|-------|-------|----------|----------|---------|---------|
| ----- | | | | | | |
| System Monitoring Compounds | | | | | | |
| 1) SA Tetrachlo... | 3.221 | 4.043 | 32960033 | 714.1E6 | 23.948 | 27.147 |
| 7) SA Decachlor... | 7.818 | 9.157 | 33801975 | 395.9E6 | 26.146 | 27.261 |
| Target Compounds | | | | | | |
| 2) Toxaphene-1 | 5.372 | 6.447 | 2130816 | 35436122 | 267.002 | 265.539 |
| 3) Toxaphene-2 | 5.952 | 6.738 | 6903773 | 41094987 | 257.905 | 266.153 |
| 4) Toxaphene-3 | 6.191 | 7.223 | 6668293 | 145.3E6 | 253.057 | 255.857 |
| 5) Toxaphene-4 | 6.537 | 7.311 | 4704844 | 83765558 | 238.779 | 241.960 |
| 6) Toxaphene-5 | 6.664 | 7.726 | 8287152 | 62134110 | 253.205 | 257.877 |
| ----- | | | | | | |

(f)=RT Delta > 1/2 Window (#)=Amounts differ by > 25% (m)=manual int.

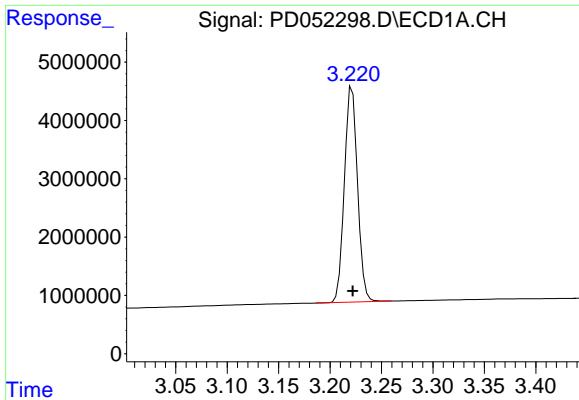
Data Path : Z:\pestpcbsrv\HPCHEM1\ECD_D\Data\PD032919\
 Data File : PD052298.D
 Signal(s) : Signal #1: ECD1A.CH Signal #2: ECD2B.CH
 Acq On : 29 Mar 2019 13:36
 Operator : AJ\SJ
 Sample : PTOXICC250
 Misc :
 ALS Vial : 18 Sample Multiplier: 1

Integration File signal 1: autoint1.e
 Integration File signal 2: autoint2.e
 Quant Time: Mar 29 13:55:35 2019
 Quant Method : Z:\pestpcbsrv\HPCHEM1\ECD_D\Method\DTX032919.M
 Quant Title : GC Extractables
 QLast Update : Fri Mar 29 13:49:18 2019
 Response via : Initial Calibration
 Integrator: ChemStation 6890 Scale Mode: Large solvent peaks clipped

Volume Inj. : 1 µl
 Signal #1 Phase : ZB-MR2 Signal #2 Phase: ZB-MR1
 Signal #1 Info : 30M x 0.32mm x0.2 Signal #2 Info : 30M x 0.32mm x 0.50µm

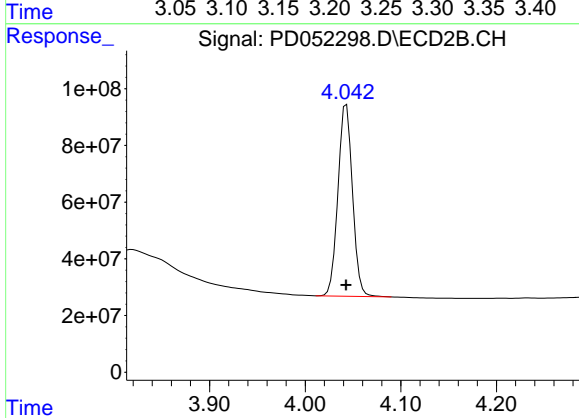


Instrument :
 ECD_D
 ClientSampleId :

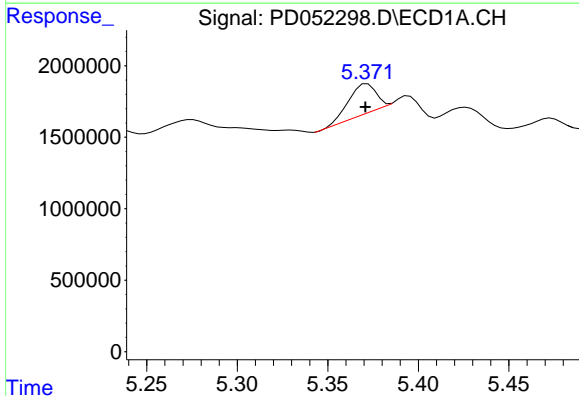


#1 Tetrachloro-m-xylene
 R.T.: 3.221 min
 Delta R.T.: 0.000 min
 Response: 32960033
 Conc: 23.95 ng/ml

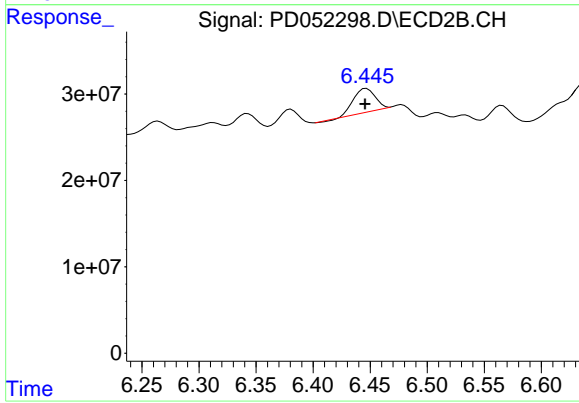
Instrument :
 ECD_D
 ClientSampleId :



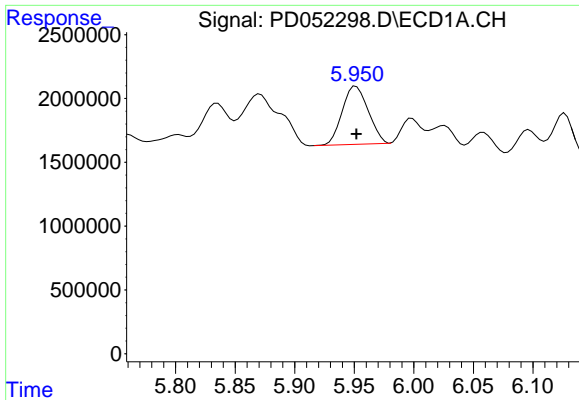
#1 Tetrachloro-m-xylene
 R.T.: 4.043 min
 Delta R.T.: 0.000 min
 Response: 714066103
 Conc: 27.15 ng/ml



#2 Toxaphene-1
 R.T.: 5.372 min
 Delta R.T.: 0.001 min
 Response: 2130816
 Conc: 267.00 ng/ml

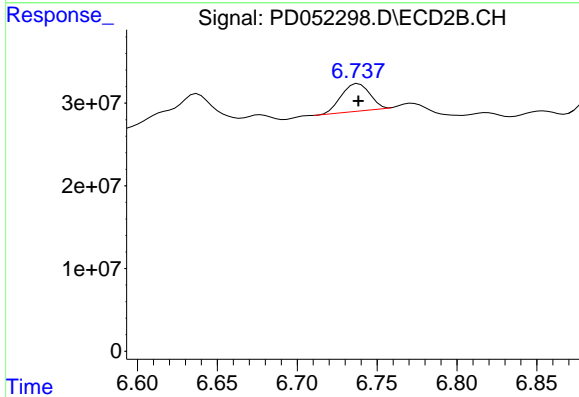


#2 Toxaphene-1
 R.T.: 6.447 min
 Delta R.T.: 0.001 min
 Response: 35436122
 Conc: 265.54 ng/ml

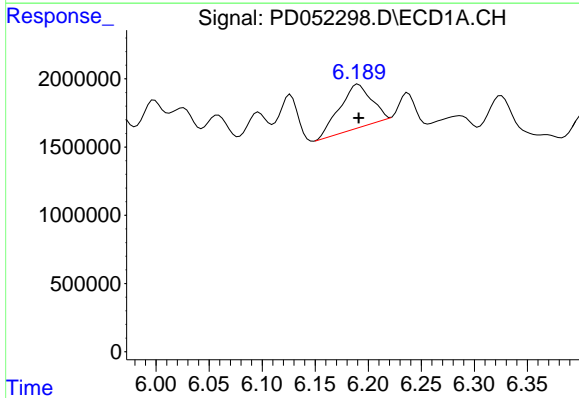


#3 Toxaphene-2
 R.T.: 5.952 min
 Delta R.T.: 0.000 min
 Response: 6903773
 Conc: 257.90 ng/ml

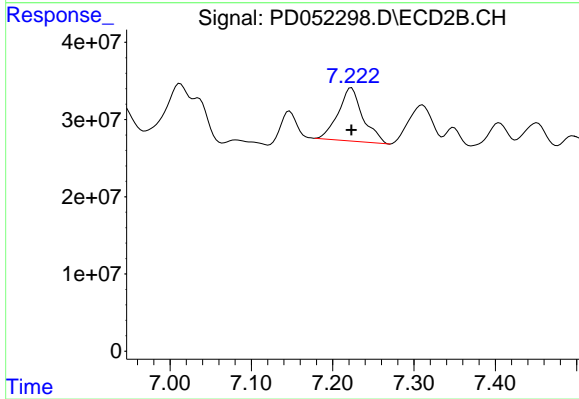
Instrument :
 ECD_D
 ClientSampled :



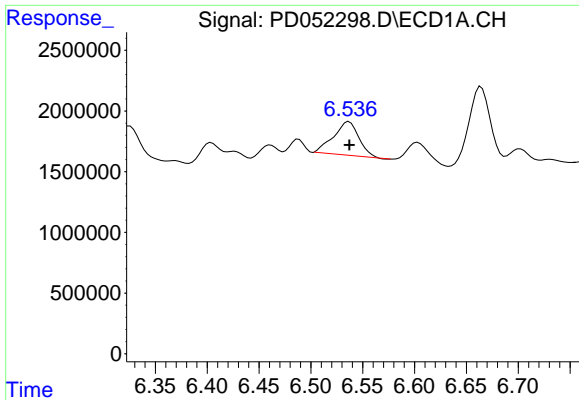
#3 Toxaphene-2
 R.T.: 6.738 min
 Delta R.T.: 0.000 min
 Response: 41094987
 Conc: 266.15 ng/ml



#4 Toxaphene-3
 R.T.: 6.191 min
 Delta R.T.: 0.000 min
 Response: 6668293
 Conc: 253.06 ng/ml

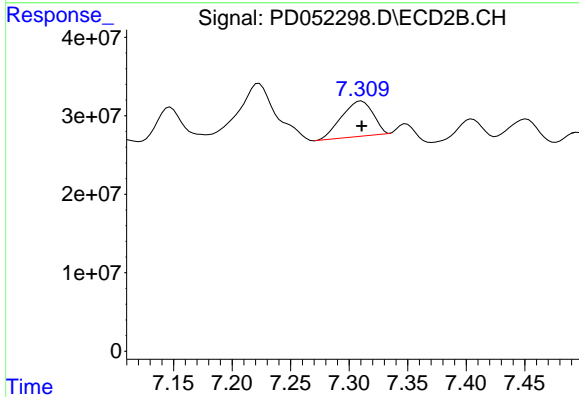


#4 Toxaphene-3
 R.T.: 7.223 min
 Delta R.T.: 0.000 min
 Response: 145320678
 Conc: 255.86 ng/ml

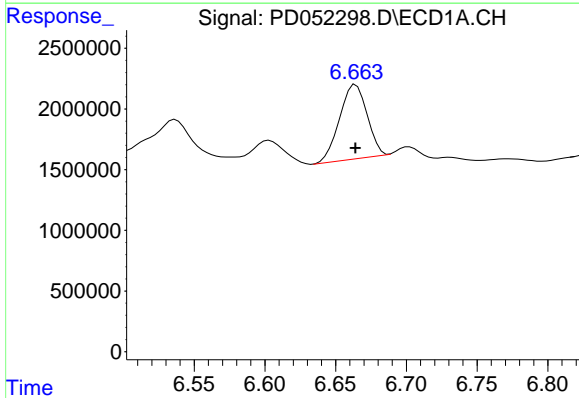


#5 Toxaphene-4
 R.T.: 6.537 min
 Delta R.T.: 0.000 min
 Response: 4704844
 Conc: 238.78 ng/ml

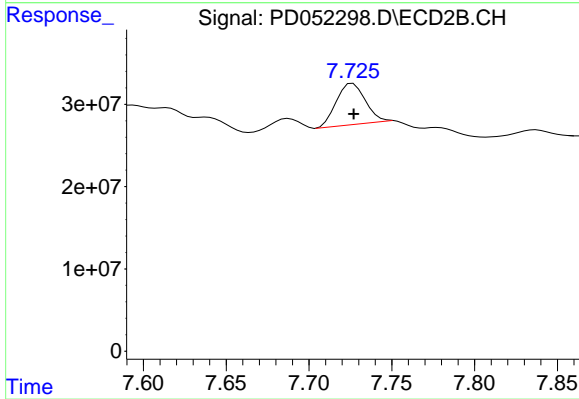
Instrument :
 ECD_D
 ClientSampled :



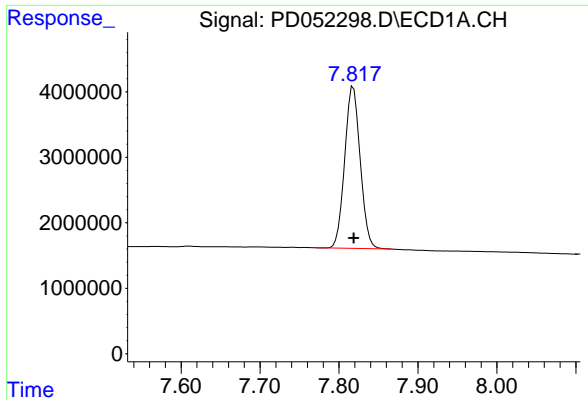
#5 Toxaphene-4
 R.T.: 7.311 min
 Delta R.T.: 0.000 min
 Response: 83765558
 Conc: 241.96 ng/ml



#6 Toxaphene-5
 R.T.: 6.664 min
 Delta R.T.: 0.000 min
 Response: 8287152
 Conc: 253.20 ng/ml



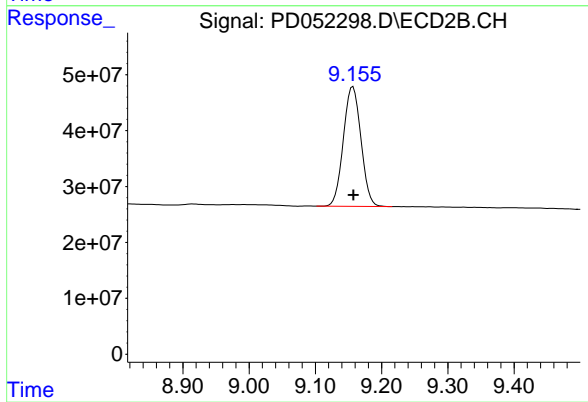
#6 Toxaphene-5
 R.T.: 7.726 min
 Delta R.T.: 0.000 min
 Response: 62134110
 Conc: 257.88 ng/ml



#7 Decachlorobiphenyl

R.T.: 7.818 min
Delta R.T.: 0.000 min
Response: 33801975
Conc: 26.15 ng/ml

Instrument :
ECD_D
ClientSampleId :



#7 Decachlorobiphenyl

R.T.: 9.157 min
Delta R.T.: 0.000 min
Response: 395929226
Conc: 27.26 ng/ml