

Data Path : Z:\pestpcbsrv\HPCHEM1\ECD_D\Data\PD032919\
 Data File : PD052331.D
 Signal(s) : Signal #1: ECD1A.CH Signal #2: ECD2B.CH
 Acq On : 29 Mar 2019 21:20
 Operator : AJ\SJ
 Sample : MDL-BL-CHL-S-03
 Misc :
 ALS Vial : 41 Sample Multiplier: 1

Instrument :
 ECD_D
 ClientSampleId :

Integration File signal 1: autoint1.e
 Integration File signal 2: autoint2.e
 Quant Time: Mar 30 05:00:18 2019
 Quant Method : Z:\pestpcbsrv\HPCHEM1\ECD_D\Method\PD032919.M
 Quant Title : GC Extractables
 QLast Update : Fri Mar 29 13:06:45 2019
 Response via : Initial Calibration
 Integrator: ChemStation 6890 Scale Mode: Large solvent peaks clipped

Volume Inj. : 2 µl
 Signal #1 Phase : ZB-MR2 Signal #2 Phase: ZB-MR1
 Signal #1 Info : 30M x 0.32mm x0.2 Signal #2 Info : 30M x 0.32mm x 0.50µm

Compound	RT#1	RT#2	Resp#1	Resp#2	ng/ml	ng/ml

System Monitoring Compounds						
1) SA Tetrachlo...	3.221	4.043	26994867	593.8E6	19.345	20.486
28) SA Decachlor...	7.817	9.155	29127259	355.4E6	21.855	22.856
Target Compounds						
3) MA gamma-BHC...	3.918	0.000	3396181	0	1.553	N.D. #
4) MA Heptachlor	0.000	5.236	0	433776	N.D.	0.011 #
8) B Heptachlo...	0.000	5.919	0	4758064	N.D.	0.147 #
17) MA 4,4'-DDT	0.000	7.208f	0	1990391	N.D.	0.107 #

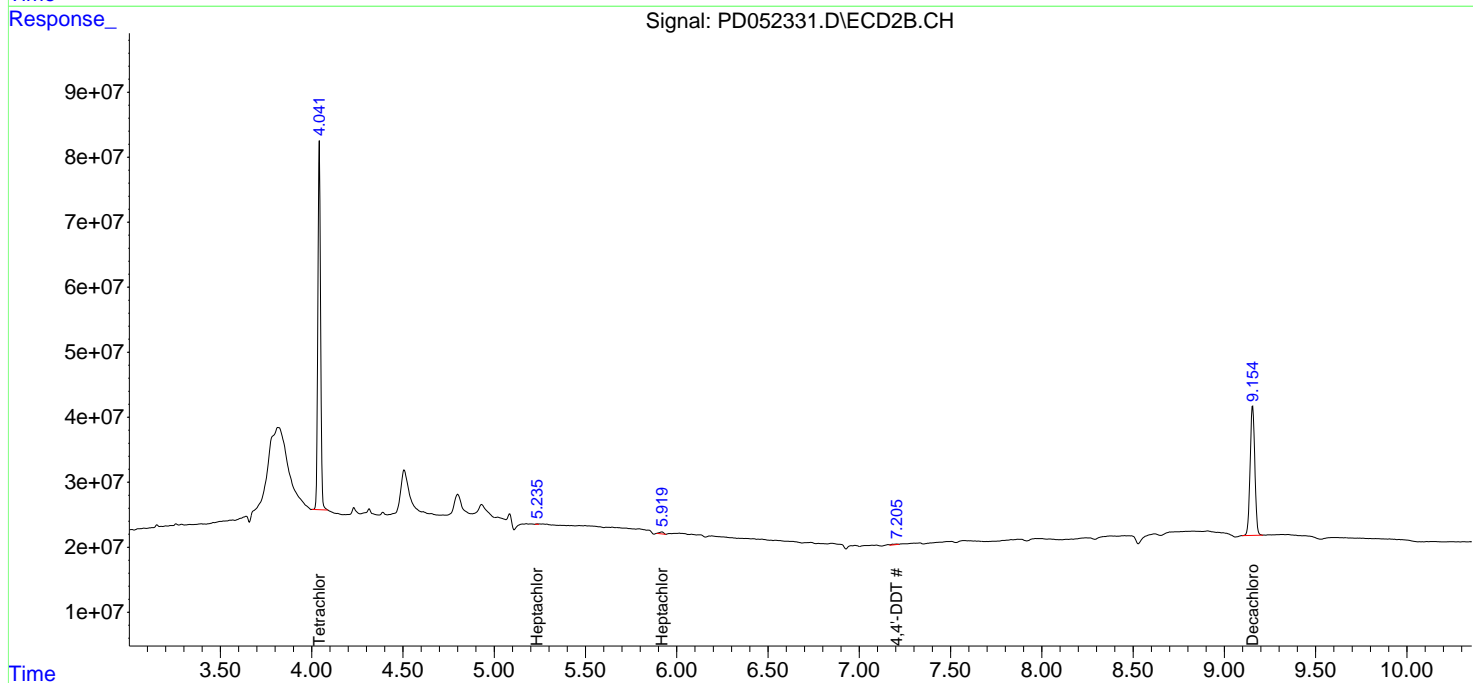
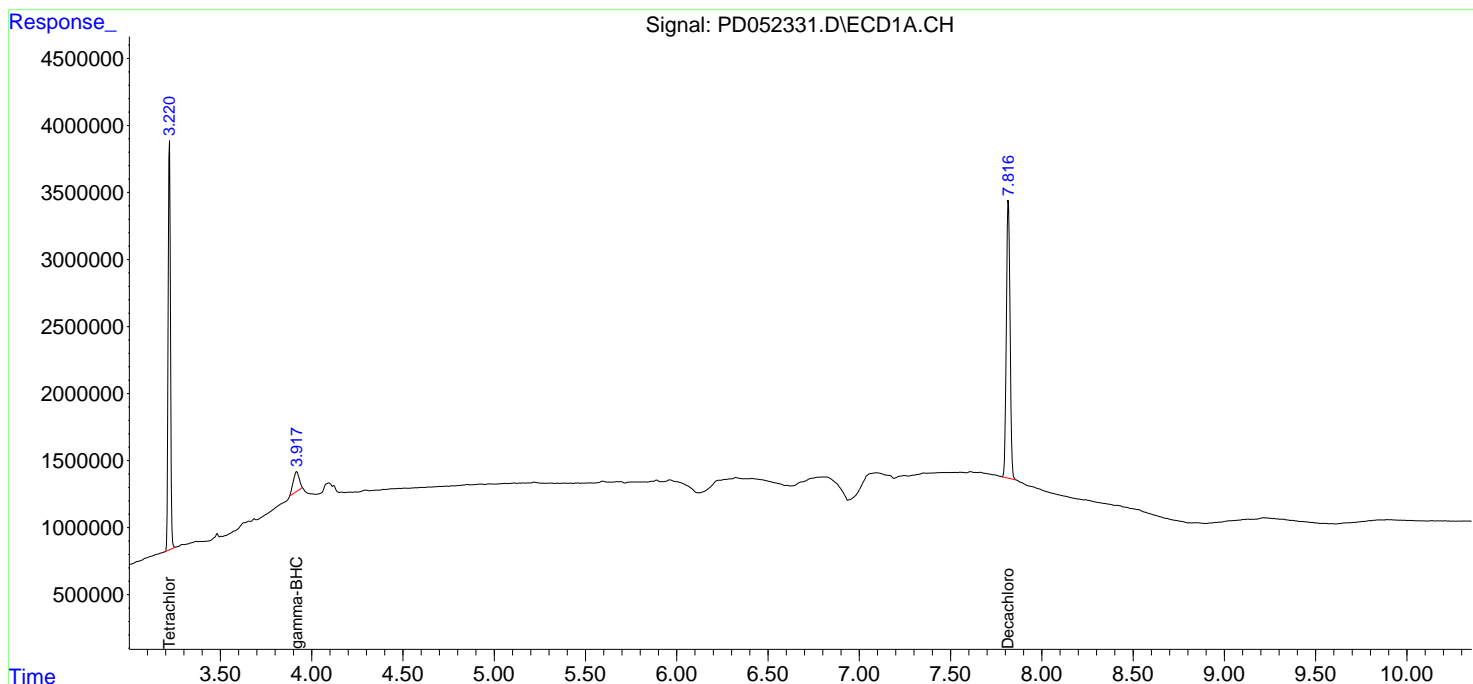
(f)=RT Delta > 1/2 Window (#)=Amounts differ by > 25% (m)=manual int.

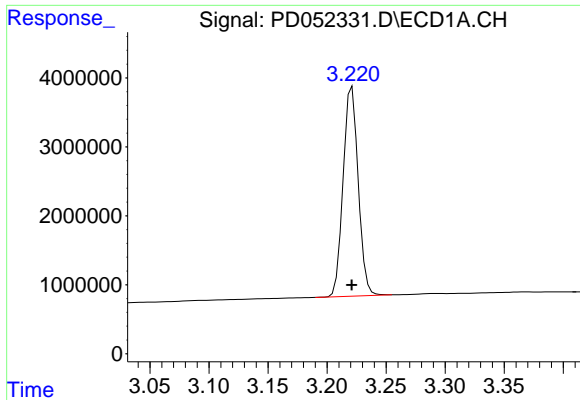
Data Path : Z:\pestpcbsrv\HPCHEM1\ECD_D\Data\PD032919\
 Data File : PD052331.D
 Signal(s) : Signal #1: ECD1A.CH Signal #2: ECD2B.CH
 Acq On : 29 Mar 2019 21:20
 Operator : AJ\SJ
 Sample : MDL-BL-CHL-S-03
 Misc :
 ALS Vial : 41 Sample Multiplier: 1

Instrument :
 ECD_D
 ClientSampled :

Integration File signal 1: autoint1.e
 Integration File signal 2: autoint2.e
 Quant Time: Mar 30 05:00:18 2019
 Quant Method : Z:\pestpcbsrv\HPCHEM1\ECD_D\Method\PD032919.M
 Quant Title : GC Extractables
 QLast Update : Fri Mar 29 13:06:45 2019
 Response via : Initial Calibration
 Integrator: ChemStation 6890 Scale Mode: Large solvent peaks clipped

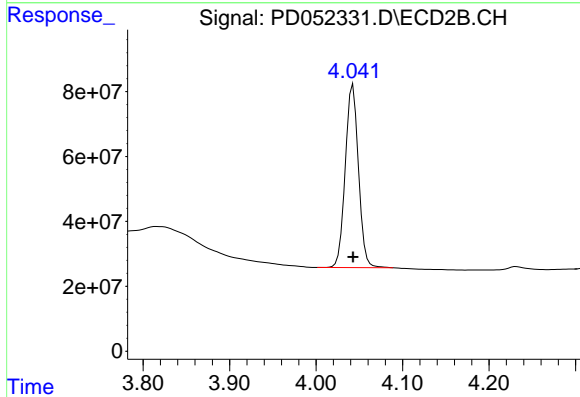
Volume Inj. : 2 µl
 Signal #1 Phase : ZB-MR2 Signal #2 Phase: ZB-MR1
 Signal #1 Info : 30M x 0.32mm x0.2 Signal #2 Info : 30M x 0.32mm x 0.50µm



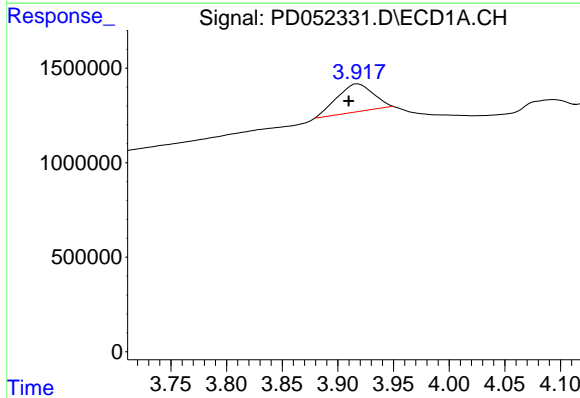


#1 Tetrachloro-m-xylene
 R.T.: 3.221 min
 Delta R.T.: 0.000 min
 Response: 26994867
 Conc: 19.35 ng/ml

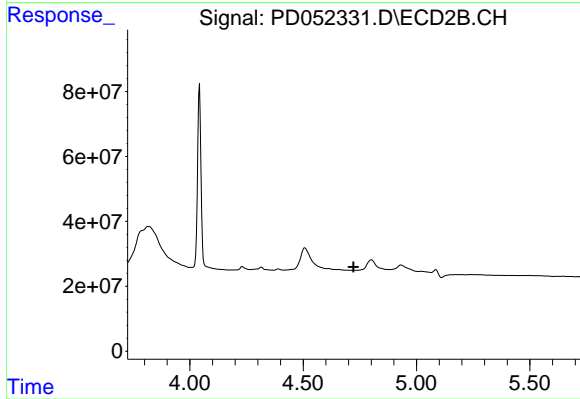
Instrument :
 ECD_D
 ClientSampled :



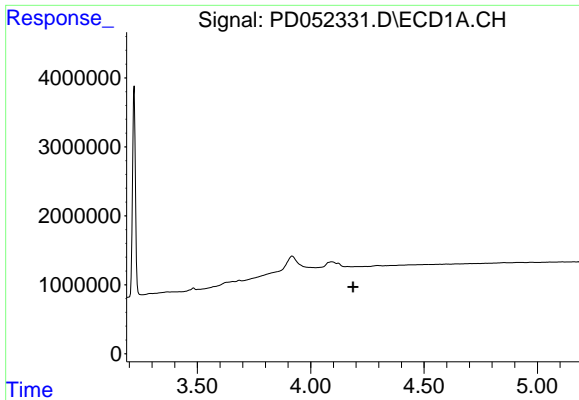
#1 Tetrachloro-m-xylene
 R.T.: 4.043 min
 Delta R.T.: 0.000 min
 Response: 593778671
 Conc: 20.49 ng/ml



#3 gamma-BHC (Lindane)
 R.T.: 3.918 min
 Delta R.T.: 0.008 min
 Response: 3396181
 Conc: 1.55 ng/ml



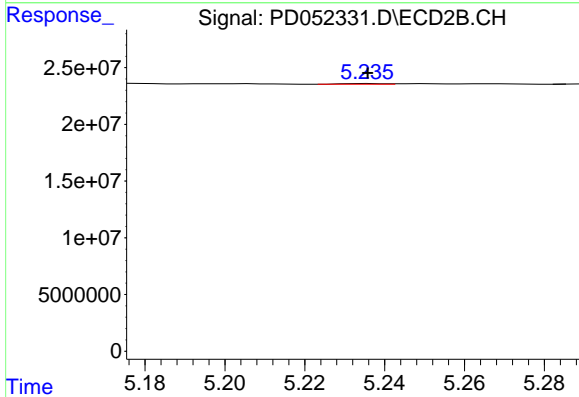
#3 gamma-BHC (Lindane)
 R.T.: 0.000 min
 Exp R.T. : 4.723 min
 Response: 0
 Conc: N.D.



#4 Heptachlor

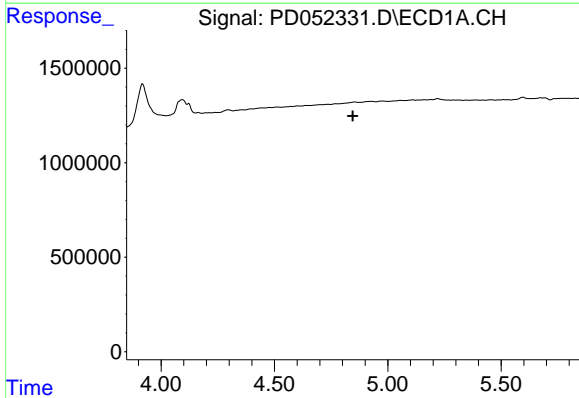
R.T.: 0.000 min
 Exp R.T. : 4.187 min
 Response: 0
 Conc: N.D.

Instrument :
 ECD_D
 ClientSampleId :



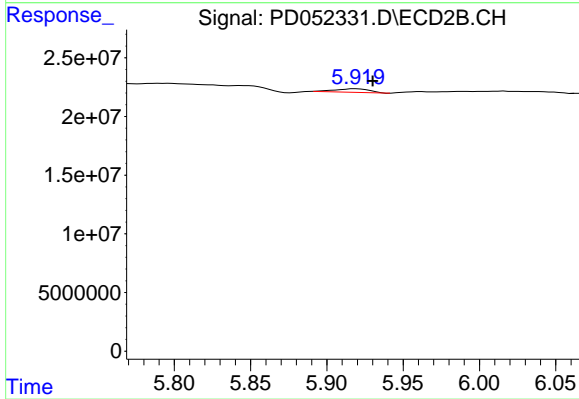
#4 Heptachlor

R.T.: 5.236 min
 Delta R.T.: 0.000 min
 Response: 433776
 Conc: 0.01 ng/ml



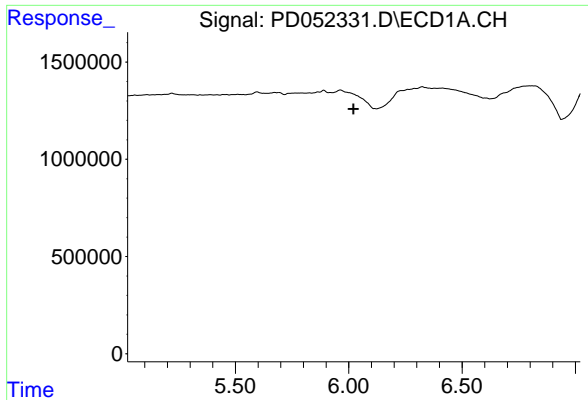
#8 Heptachlor epoxide

R.T.: 0.000 min
 Exp R.T. : 4.846 min
 Response: 0
 Conc: N.D.



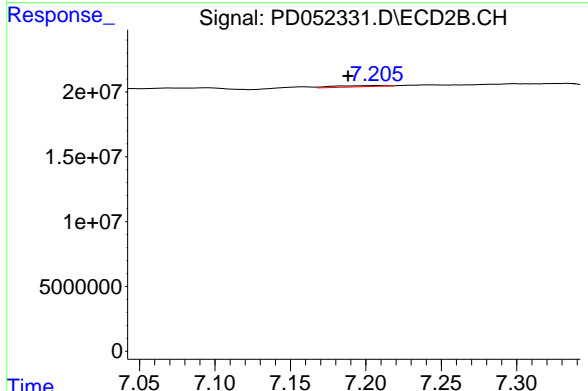
#8 Heptachlor epoxide

R.T.: 5.919 min
 Delta R.T.: -0.011 min
 Response: 4758064
 Conc: 0.15 ng/ml

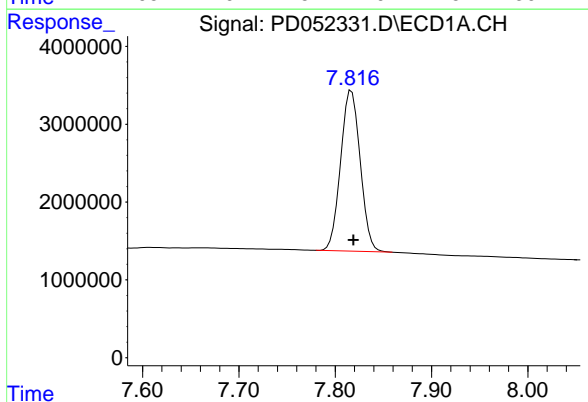


#17 4,4'-DDT
 R.T.: 0.000 min
 Exp R.T.: 6.021 min
 Response: 0
 Conc: N.D.

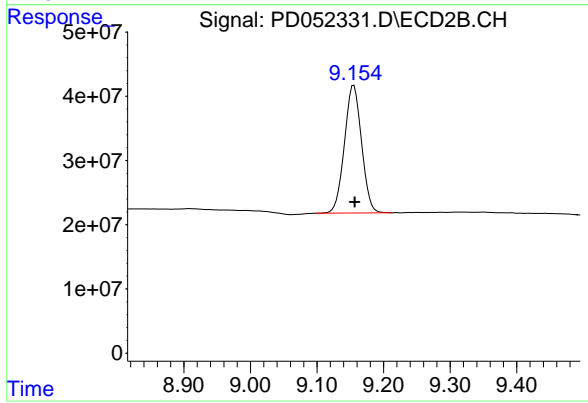
Instrument :
 ECD_D
 ClientSampled :



#17 4,4'-DDT
 R.T.: 7.208 min
 Delta R.T.: 0.020 min
 Response: 1990391
 Conc: 0.11 ng/ml



#28 Decachlorobiphenyl
 R.T.: 7.817 min
 Delta R.T.: -0.002 min
 Response: 29127259
 Conc: 21.85 ng/ml



#28 Decachlorobiphenyl
 R.T.: 9.155 min
 Delta R.T.: -0.001 min
 Response: 355445473
 Conc: 22.86 ng/ml