

Data Path : Z:\pestpcbsrv\HPCHEM1\ECD_D\Data\PD032919\
 Data File : PD052350.D
 Signal(s) : Signal #1: ECD1A.CH Signal #2: ECD2B.CH
 Acq On : 30 Mar 2019 1:50
 Operator : AJ\SJ
 Sample : MDL-TOX-W-03
 Misc : 50 PPB
 ALS Vial : 56 Sample Multiplier: 1

Instrument :
 ECD_D
 ClientSampleId :
 MDL-TOX-W-03

Integration File signal 1: autoint1.e
 Integration File signal 2: autoint2.e
 Quant Time: Mar 30 05:10:35 2019
 Quant Method : Z:\pestpcbsrv\HPCHEM1\ECD_D\Method\DTX032919.M
 Quant Title : GC Extractables
 QLast Update : Fri Mar 29 14:07:32 2019
 Response via : Initial Calibration
 Integrator: ChemStation 6890 Scale Mode: Large solvent peaks clipped

Volume Inj. : 1 µl
 Signal #1 Phase : ZB-MR2 Signal #2 Phase: ZB-MR1
 Signal #1 Info : 30M x 0.32mm x0.2 Signal #2 Info : 30M x 0.32mm x 0.50µm

Compound	RT#1	RT#2	Resp#1	Resp#2	ng/ml	ng/ml

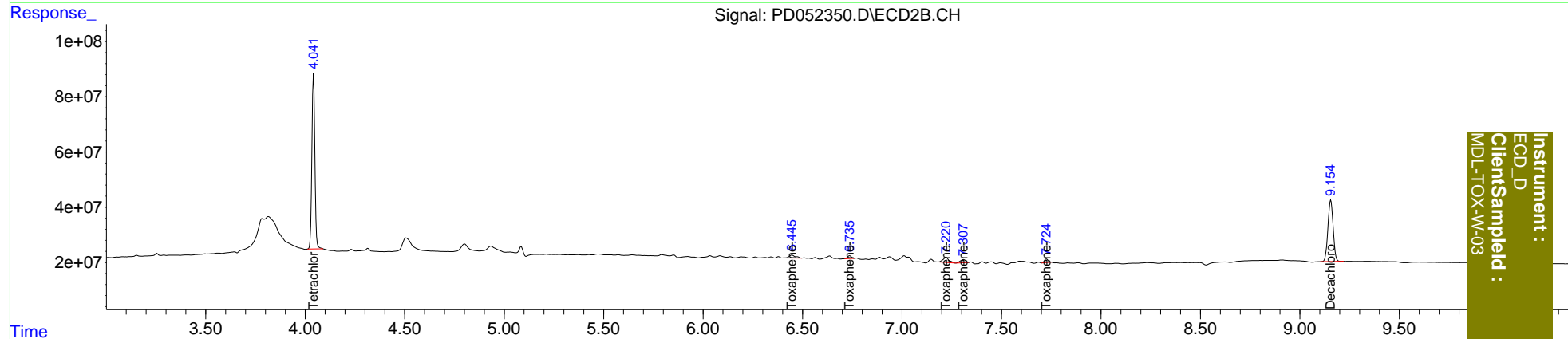
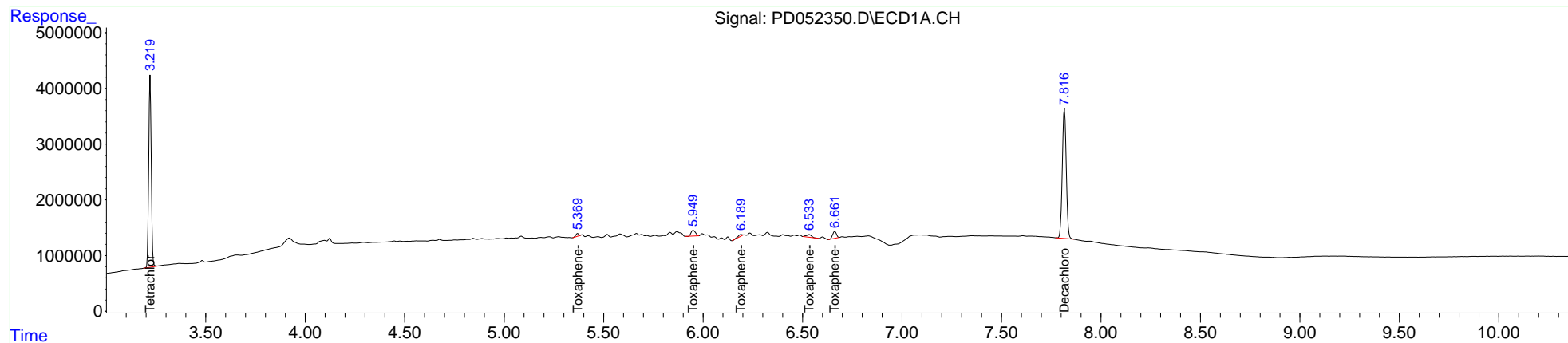
System Monitoring Compounds						
1) SA Tetrachlo...	3.221	4.042	30284259	665.3E6	22.290	23.847
7) SA Decachlor...	7.817	9.155	32282200	407.1E6	24.036	26.578
Target Compounds						
2) Toxaphene-1	5.370	6.446	497475	24840667	60.331	179.061 #
3) Toxaphene-2	5.951	6.737	1547496	13077914	56.467	79.940 #
4) Toxaphene-3	6.191	7.222	359379	39727446	13.827	68.801 #
5) Toxaphene-4	6.534	7.309	878597	22148155	46.004	64.848 #
6) Toxaphene-5	6.662	7.726	1640264	17078120	49.978	69.681 #

(f)=RT Delta > 1/2 Window (#)=Amounts differ by > 25% (m)=manual int.

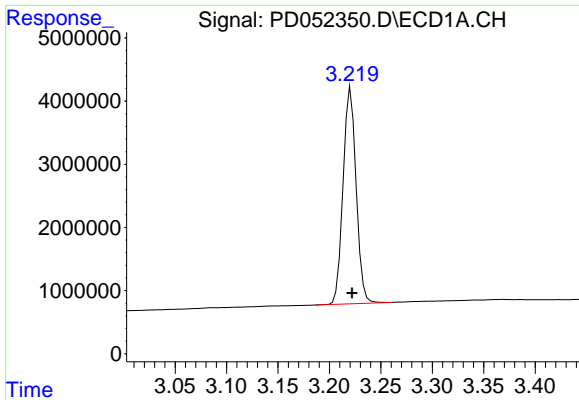
Data Path : Z:\pestpcbsrv\HPCHEM1\ECD_D\Data\PD032919\
 Data File : PD052350.D
 Signal(s) : Signal #1: ECD1A.CH Signal #2: ECD2B.CH
 Acq On : 30 Mar 2019 1:50
 Operator : AJ\SJ
 Sample : MDL-TOX-W-03
 Misc : 50 PPB
 ALS Vial : 56 Sample Multiplier: 1

Integration File signal 1: autoint1.e
 Integration File signal 2: autoint2.e
 Quant Time: Mar 30 05:10:35 2019
 Quant Method : Z:\pestpcbsrv\HPCHEM1\ECD_D\Method\DTX032919.M
 Quant Title : GC Extractables
 QLast Update : Fri Mar 29 14:07:32 2019
 Response via : Initial Calibration
 Integrator: ChemStation 6890 Scale Mode: Large solvent peaks clipped

Volume Inj. : 1 µl
 Signal #1 Phase : ZB-MR2 Signal #2 Phase: ZB-MR1
 Signal #1 Info : 30M x 0.32mm x0.2 Signal #2 Info : 30M x 0.32mm x 0.50µm

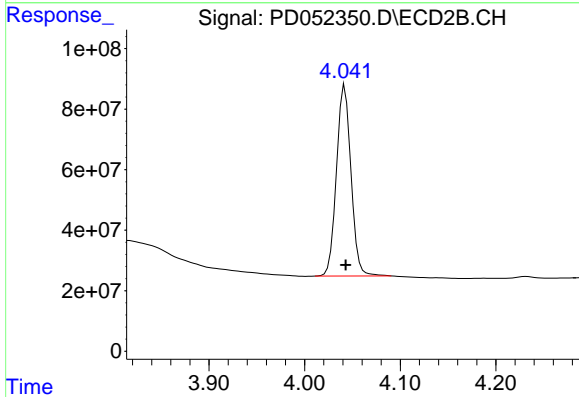


Instrument :
 ECD_D
 Client Sample Id :
 MDL-TOX-W-03

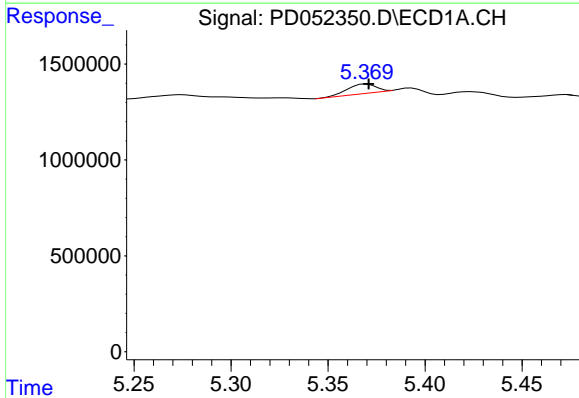


#1 Tetrachloro-m-xylene
 R.T.: 3.221 min
 Delta R.T.: -0.001 min
 Response: 30284259
 Conc: 22.29 ng/ml

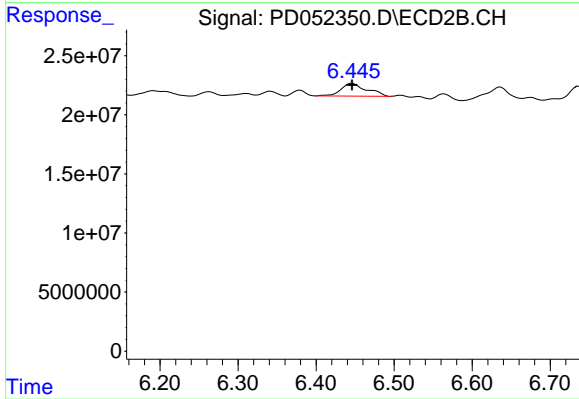
Instrument :
 ECD_D
 ClientSampleId :
 MDL-TOX-W-03



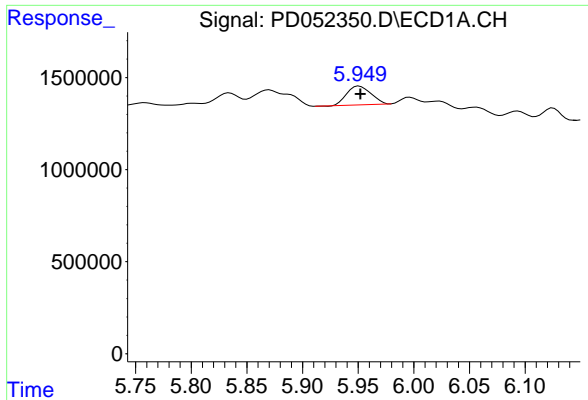
#1 Tetrachloro-m-xylene
 R.T.: 4.042 min
 Delta R.T.: -0.001 min
 Response: 665265444
 Conc: 23.85 ng/ml



#2 Toxaphene-1
 R.T.: 5.370 min
 Delta R.T.: -0.001 min
 Response: 497475
 Conc: 60.33 ng/ml



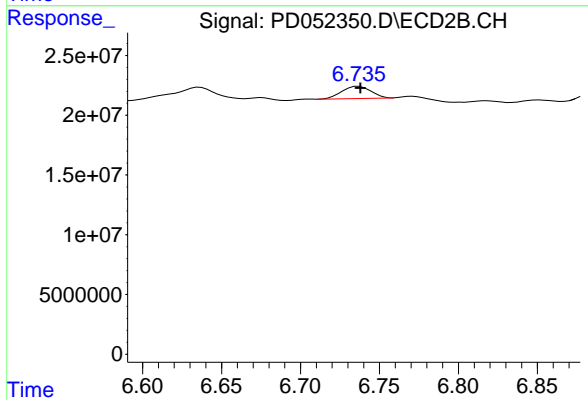
#2 Toxaphene-1
 R.T.: 6.446 min
 Delta R.T.: 0.000 min
 Response: 24840667
 Conc: 179.06 ng/ml



#3 Toxaphene-2

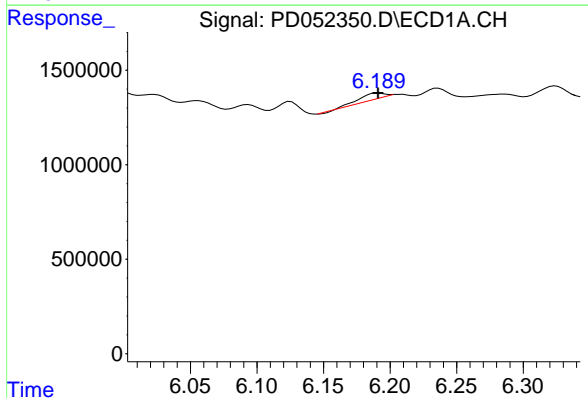
R.T.: 5.951 min
 Delta R.T.: -0.001 min
 Response: 1547496
 Conc: 56.47 ng/ml

Instrument :
 ECD_D
 ClientSampleId :
 MDL-TOX-W-03



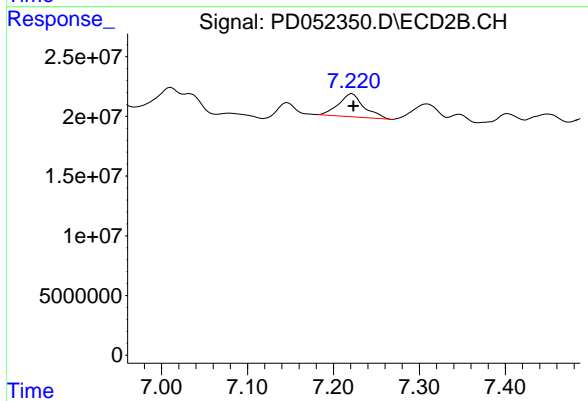
#3 Toxaphene-2

R.T.: 6.737 min
 Delta R.T.: -0.001 min
 Response: 13077914
 Conc: 79.94 ng/ml



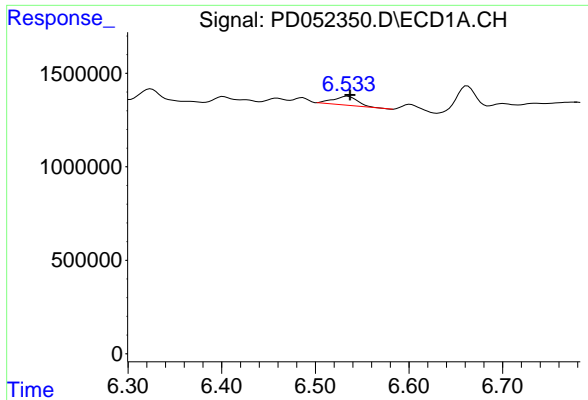
#4 Toxaphene-3

R.T.: 6.191 min
 Delta R.T.: 0.000 min
 Response: 359379
 Conc: 13.83 ng/ml



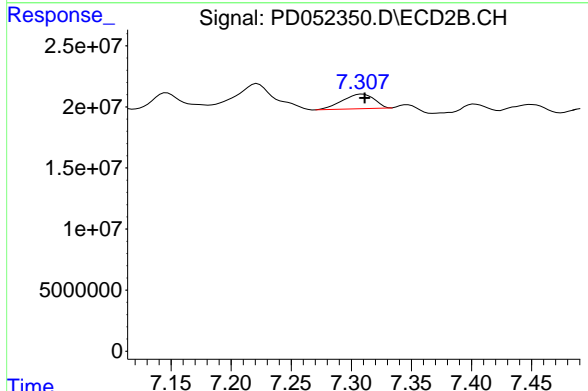
#4 Toxaphene-3

R.T.: 7.222 min
 Delta R.T.: -0.001 min
 Response: 39727446
 Conc: 68.80 ng/ml

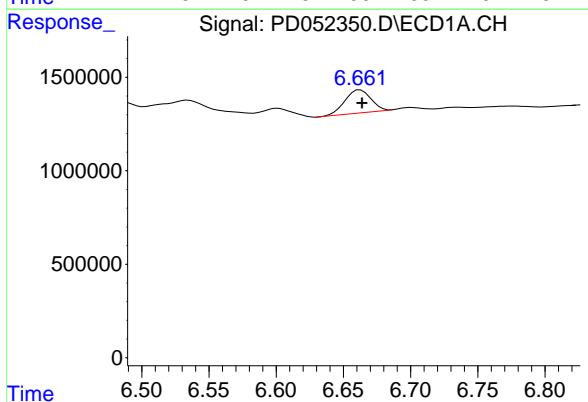


#5 Toxaphene-4
 R.T.: 6.534 min
 Delta R.T.: -0.003 min
 Response: 878597
 Conc: 46.00 ng/ml

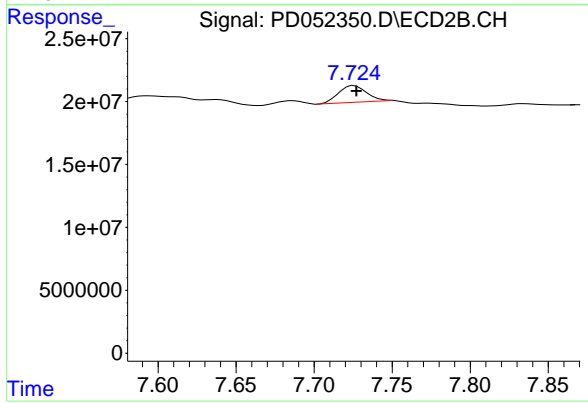
Instrument :
 ECD_D
 ClientSampleId :
 MDL-TOX-W-03



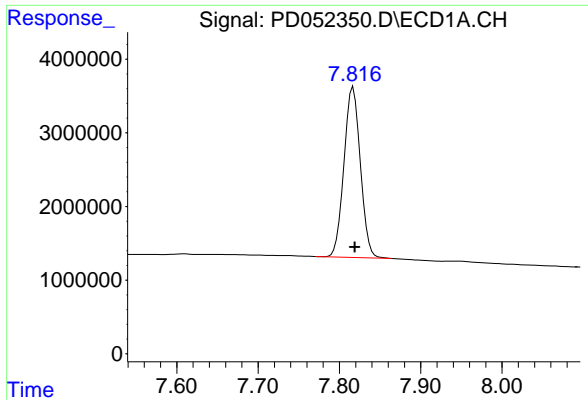
#5 Toxaphene-4
 R.T.: 7.309 min
 Delta R.T.: -0.002 min
 Response: 22148155
 Conc: 64.85 ng/ml



#6 Toxaphene-5
 R.T.: 6.662 min
 Delta R.T.: -0.002 min
 Response: 1640264
 Conc: 49.98 ng/ml



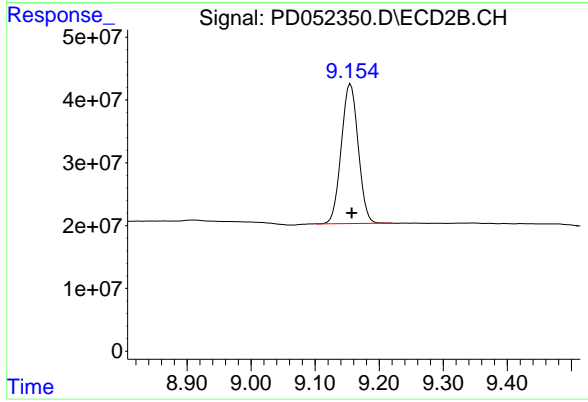
#6 Toxaphene-5
 R.T.: 7.726 min
 Delta R.T.: -0.001 min
 Response: 17078120
 Conc: 69.68 ng/ml



#7 Decachlorobiphenyl

R.T.: 7.817 min
Delta R.T.: -0.002 min
Response: 32282200
Conc: 24.04 ng/ml

Instrument :
ECD_D
ClientSampleId :
MDL-TOX-W-03



#7 Decachlorobiphenyl

R.T.: 9.155 min
Delta R.T.: -0.002 min
Response: 407147192
Conc: 26.58 ng/ml