

Data Path : Z:\pestpcbsrv\HPCHEM1\ECD_D\Data\PD032923\
 Data File : PD074560.D
 Signal(s) : Signal #1: ECD1A.ch Signal #2: ECD2B.ch
 Acq On : 29 Mar 2023 19:04
 Operator : AR\AJ
 Sample : PEM038
 Misc :
 ALS Vial : 3 Sample Multiplier: 1

Instrument :
 ECD_D
 ClientSampleId :
 PEM049

Integration File signal 1: autoint1.e
 Integration File signal 2: autoint2.e
 Quant Time: Mar 30 00:51:04 2023
 Quant Method : Z:\pestpcbsrv\HPCHEM1\ECD_D\Method\PD031323CLP.M
 Quant Title : GC Extractables
 QLast Update : Tue Mar 14 03:05:06 2023
 Response via : Initial Calibration
 Integrator: ChemStation

Volume Inj. : 1 µl
 Signal #1 Phase : ZB-MR1 Signal #2 Phase: ZB-MR2
 Signal #1 Info : 30M x 0.32mm x0.5 Signal #2 Info : 30M x 0.32mm x 0.25µm

Compound	RT#1	RT#2	Resp#1	Resp#2	ng/ml	ng/ml

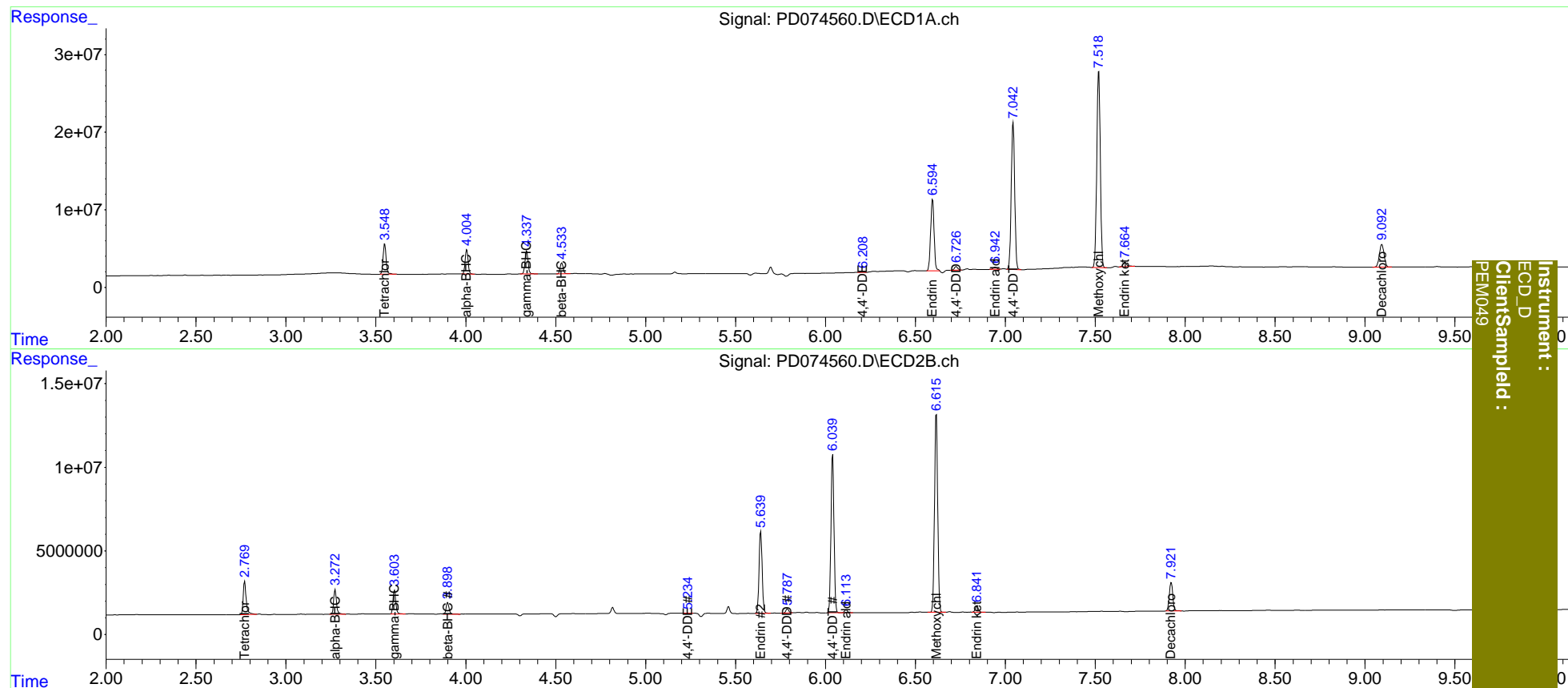
System Monitoring Compounds						
1) SA Tetrachlo...	3.549	2.771	46540219	23237717	18.733	18.470
27) SA Decachlor...	9.094	7.923	53659248	22793191	19.605	19.036
Target Compounds						
2) A alpha-BHC	4.006	3.274	36224684	16478395	9.283	9.221
3) MA gamma-BHC...	4.339	3.604	35462344	15516499	9.607	9.085
6) B beta-BHC	4.534	3.900	16390518	7787454	9.695	9.612
12) B 4,4'-DDE	6.209	5.234	560169	197412	0.187	0.136m#
14) MA Endrin	6.596	5.640	124.3E6	58726727	47.168	43.654
16) A 4,4'-DDD	6.727	5.789	5894739	2723561	2.494	2.313
17) MA 4,4'-DDT	7.043	6.040	253.2E6	111.3E6	100.897	88.820
18) B Endrin al...	6.944	6.115	3821464	2091077	1.697	1.902
20) A Methoxychlor	7.519	6.616	347.5E6	146.5E6	253.099	238.251
21) B Endrin ke...	7.666	6.843	9104336	4355375	3.071	2.862

(f)=RT Delta > 1/2 Window (#)=Amounts differ by > 25% (m)=manual int.

Data Path : Z:\pestpcbsrv\HPCHEM1\ECD_D\Data\PD032923\
 Data File : PD074560.D
 Signal(s) : Signal #1: ECD1A.ch Signal #2: ECD2B.ch
 Acq On : 29 Mar 2023 19:04
 Operator : AR\AJ
 Sample : PEM038
 Misc :
 ALS Vial : 3 Sample Multiplier: 1

Integration File signal 1: autoint1.e
 Integration File signal 2: autoint2.e
 Quant Time: Mar 30 00:51:04 2023
 Quant Method : Z:\pestpcbsrv\HPCHEM1\ECD_D\Method\PD031323CLP.M
 Quant Title : GC Extractables
 QLast Update : Tue Mar 14 03:05:06 2023
 Response via : Initial Calibration
 Integrator: ChemStation

Volume Inj. : 1 µl
 Signal #1 Phase : ZB-MR1 Signal #2 Phase: ZB-MR2
 Signal #1 Info : 30M x 0.32mm x0.5 Signal #2 Info : 30M x 0.32mm x 0.25µm



Instrument :
 ECD_D
 ClientSampled :
 PEM049