

Data Path : Z:\pestpcbsrv\HPCHEM1\ECD_D\Data\PD040121\
 Data File : PD061944.D
 Signal(s) : Signal #1: ECD1A.ch Signal #2: ECD2B.ch
 Acq On : 01 Apr 2021 13:24
 Operator : AR\AJ
 Sample : PB133454BS
 Misc :
 ALS Vial : 7 Sample Multiplier: 1

Instrument :
 ECD_D
 ClientSampled :

Integration File signal 1: autoint1.e
 Integration File signal 2: autoint2.e
 Quant Time: Apr 02 02:01:08 2021
 Quant Method : Z:\pestpcbsrv\HPCHEM1\ECD_D\Method\PD032921.M
 Quant Title : GC Extractables
 QLast Update : Tue Mar 30 04:47:56 2021
 Response via : Initial Calibration
 Integrator: ChemStation

Volume Inj. : 2 µl
 Signal #1 Phase : ZB-MR2 Signal #2 Phase: ZB-MR1
 Signal #1 Info : 30M x 0.32mm x0.2 Signal #2 Info : 30M x 0.32mm x 0.50µm

	Compound	RT#1	RT#2	Resp#1	Resp#2	ng/ml	ng/ml

System Monitoring Compounds							
1)	SA Tetrachlo...	3.485	3.982	17310089	190.2E6	20.674	21.894
28)	SA Decachlor...	8.259	9.043	23908158	149.2E6	19.431	15.808
Target Compounds							
2)	A alpha-BHC	3.925	4.371	70435904	771.9E6	55.768	57.385
3)	MA gamma-BHC...	4.210	4.655	67198954	712.9E6	56.600	57.148
4)	MA Heptachlor	4.514	5.164	65332307	696.5E6	56.119	53.445
5)	MB Aldrin	4.763	5.468	64803142	663.7E6	53.996	53.336
6)	B beta-BHC	4.460	4.824	27385484	276.8E6	50.219	53.595
7)	B delta-BHC	4.667	5.041	66882198	660.3E6	55.056	49.917
8)	B Heptachlo...	5.208	5.854	61827996	599.3E6	53.935	50.616
9)	A Endosulfan I	5.549	6.210	58514038	563.5E6	53.286	51.979
10)	B gamma-Chl...	5.436	6.088	63400071	611.2E6	54.125	51.554
11)	B alpha-Chl...	5.494	6.160	63173577	587.3E6	54.365	51.516
12)	B 4,4'-DDE	5.658	6.317	61195219	598.0E6	54.460	51.895
13)	MA Dieldrin	5.793	6.468	63748195	604.4E6	55.151	52.363
14)	MA Endrin	6.051	6.685	56647250	501.0E6	55.131	50.620
15)	B Endosulfa...	6.325	6.894	51887415	504.8E6	50.627	53.170
16)	A 4,4'-DDD	6.175	6.807	51170343	460.4E6	54.985	48.622
17)	MA 4,4'-DDT	6.417	7.106	49968867	465.7E6	55.476	48.752
18)	B Endrin al...	6.494	7.018	48587995	430.1E6	56.871	54.694
19)	B Endosulfa...	6.708	7.241	50950318	470.5E6	47.218	46.946
20)	A Methoxychlor	6.964	7.564	26335269	217.4E6	55.736	48.231
21)	B Endrin ke...	7.202	7.712	63602987	446.1E6	49.836	43.979
22)	Mirex	7.393	8.167	41024210	290.4E6	48.814	45.069
23)	Chlordane-1	0.000	4.972	0	464268	N.D.	1.197 #
24)	Chlordane-2	0.000	5.468f	0	663.7E6	N.D.	1729.739 #
25)	Chlordane-3	5.436	6.088	63400071	611.2E6	546.500	368.681 #
26)	Chlordane-4	5.494	6.160	63173577	587.3E6	656.639	306.045 #
27)	Chlordane-5	6.325	6.941f	51887415	1178531	1178.354	3.270 #

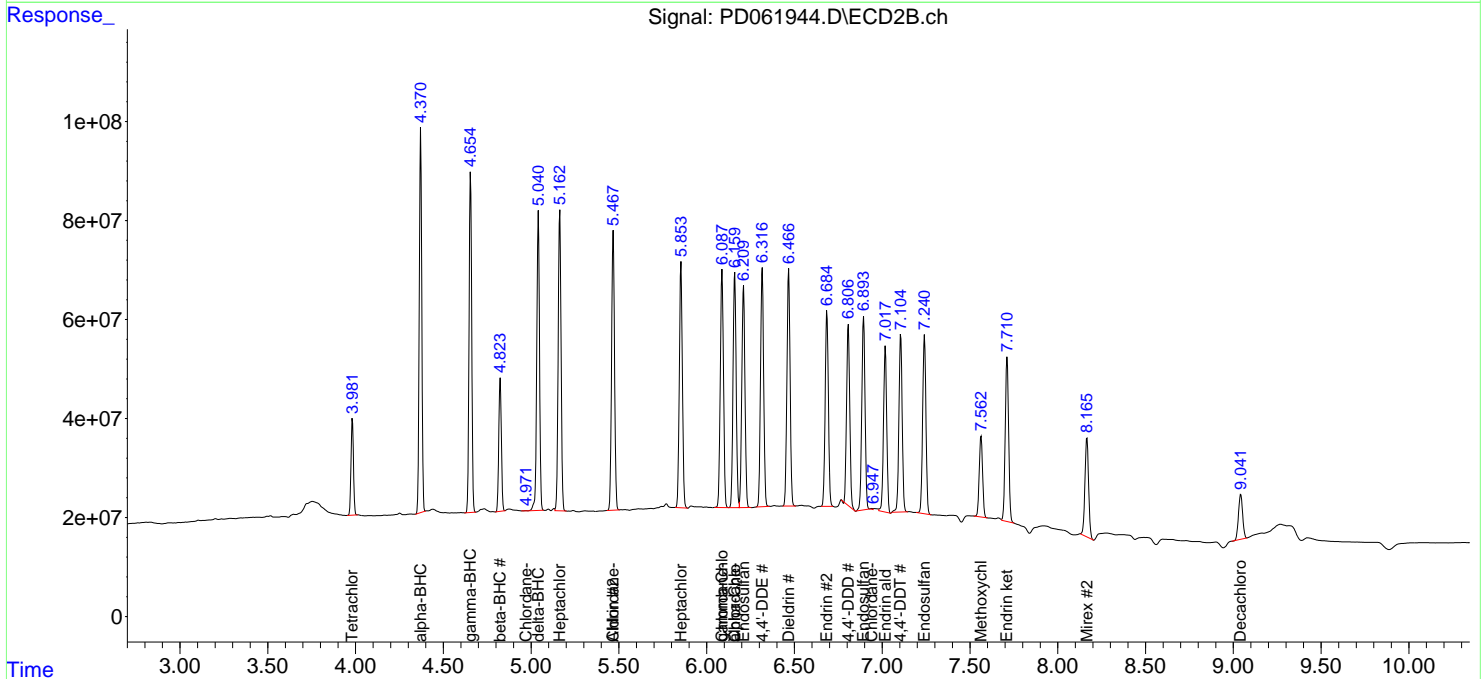
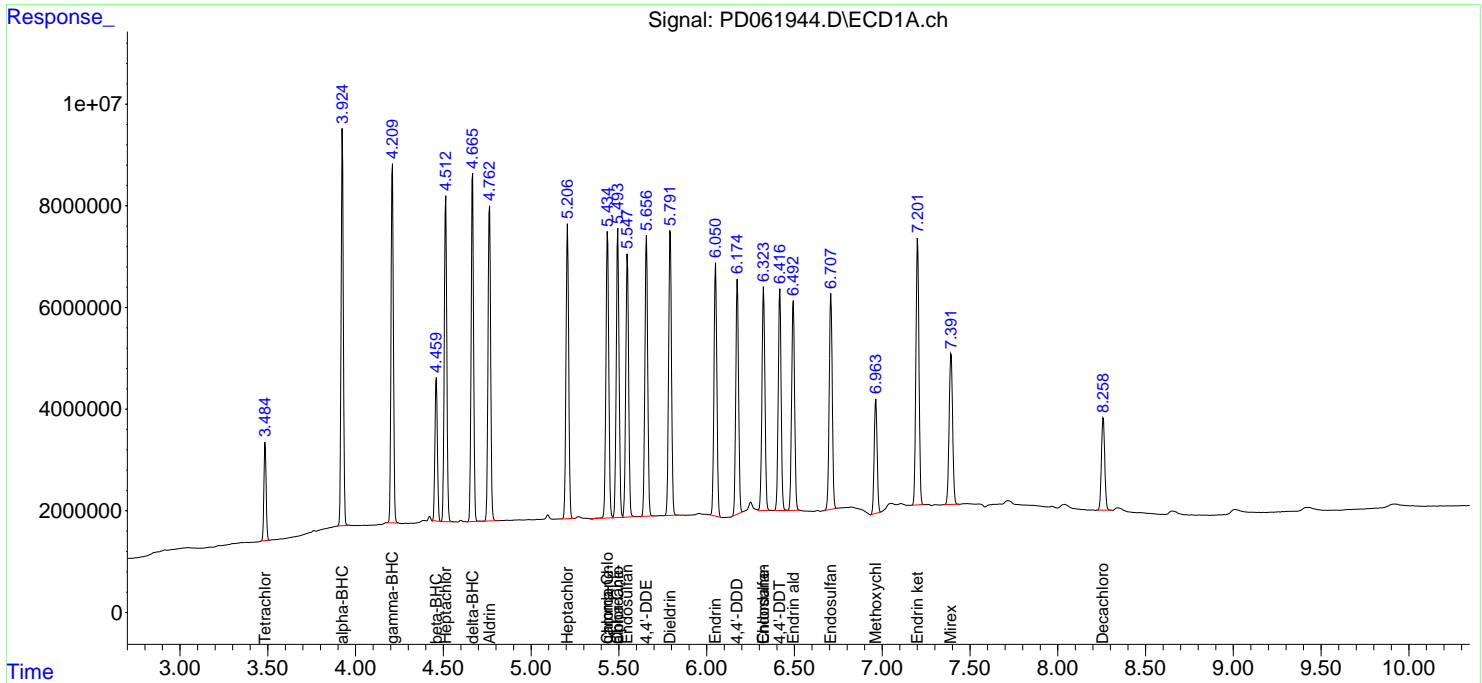
(f)=RT Delta > 1/2 Window (#)=Amounts differ by > 25% (m)=manual int.

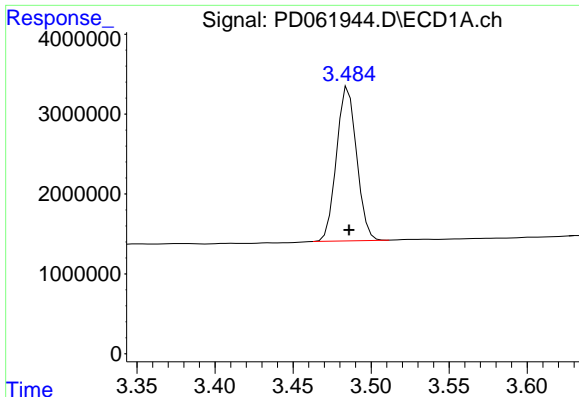
Data Path : Z:\pestpcbsrv\HPCHEM1\ECD_D\Data\PD040121\
 Data File : PD061944.D
 Signal(s) : Signal #1: ECD1A.ch Signal #2: ECD2B.ch
 Acq On : 01 Apr 2021 13:24
 Operator : AR\AJ
 Sample : PB133454BS
 Misc :
 ALS Vial : 7 Sample Multiplier: 1

Instrument :
 ECD_D
 ClientSampled :

Integration File signal 1: autoint1.e
 Integration File signal 2: autoint2.e
 Quant Time: Apr 02 02:01:08 2021
 Quant Method : Z:\pestpcbsrv\HPCHEM1\ECD_D\Method\PD032921.M
 Quant Title : GC Extractables
 QLast Update : Tue Mar 30 04:47:56 2021
 Response via : Initial Calibration
 Integrator: ChemStation

Volume Inj. : 2 µl
 Signal #1 Phase : ZB-MR2 Signal #2 Phase: ZB-MR1
 Signal #1 Info : 30M x 0.32mm x0.2 Signal #2 Info : 30M x 0.32mm x 0.50µm

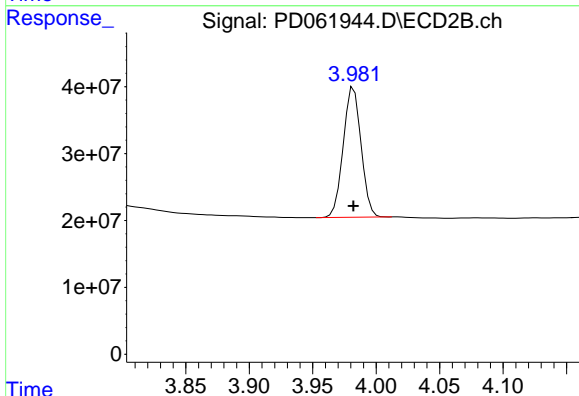




#1 Tetrachloro-m-xylene

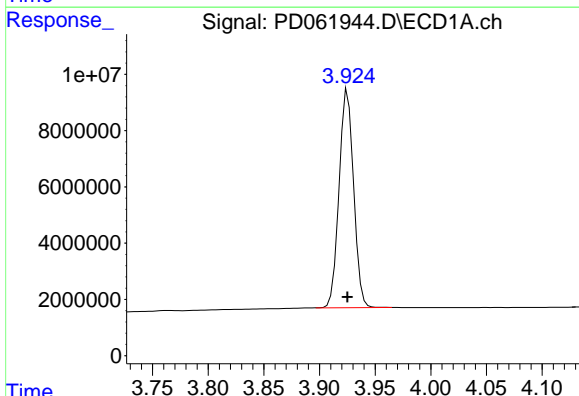
R.T.: 3.485 min
Delta R.T.: 0.000 min
Response: 17310089
Conc: 20.67 ng/ml

Instrument :
ECD_D
ClientSampleId :



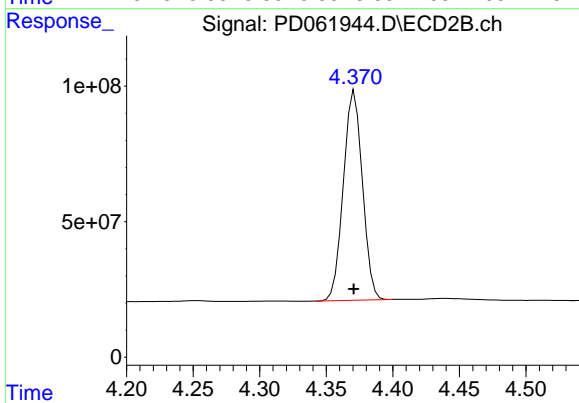
#1 Tetrachloro-m-xylene

R.T.: 3.982 min
Delta R.T.: 0.000 min
Response: 190235371
Conc: 21.89 ng/ml



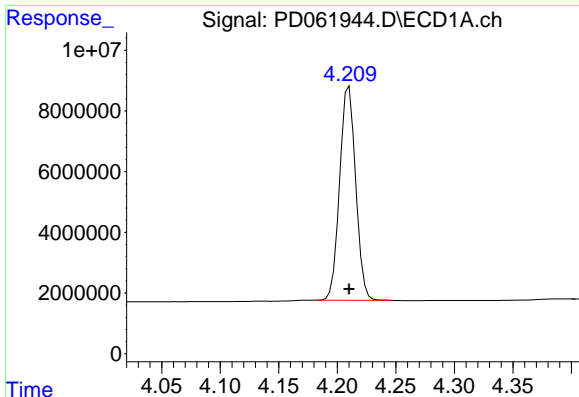
#2 alpha-BHC

R.T.: 3.925 min
Delta R.T.: 0.000 min
Response: 70435904
Conc: 55.77 ng/ml



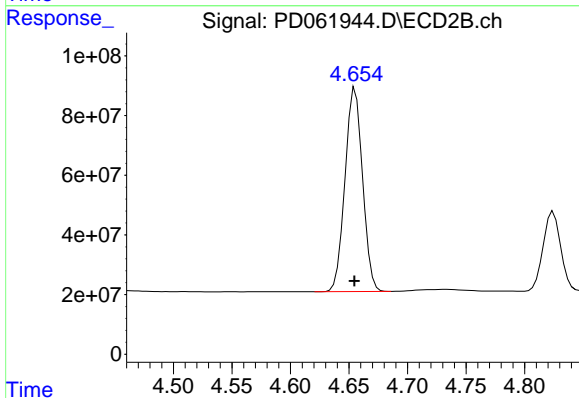
#2 alpha-BHC

R.T.: 4.371 min
Delta R.T.: 0.000 min
Response: 771877192
Conc: 57.39 ng/ml

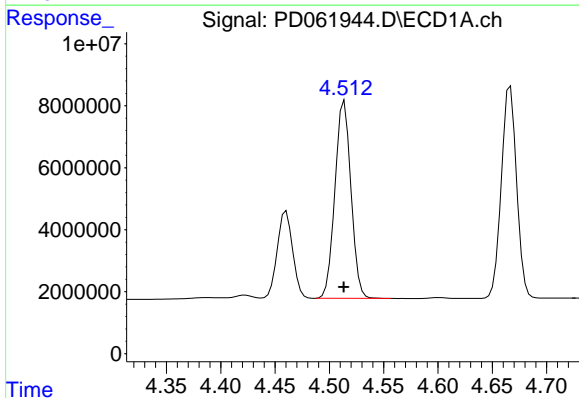


#3 gamma-BHC (Lindane)
 R.T.: 4.210 min
 Delta R.T.: 0.000 min
 Response: 67198954
 Conc: 56.60 ng/ml

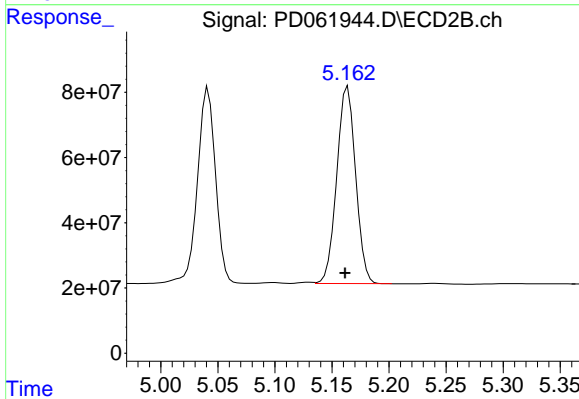
Instrument :
 ECD_D
 ClientSampleId :



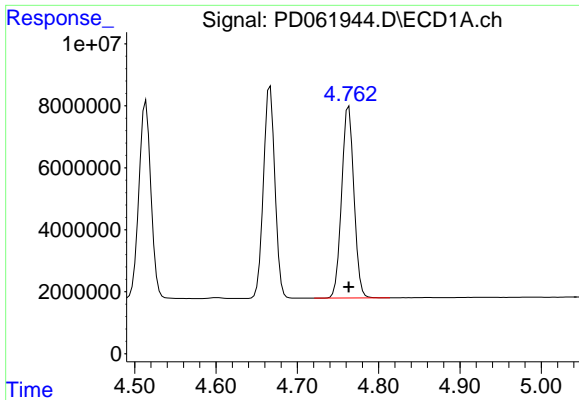
#3 gamma-BHC (Lindane)
 R.T.: 4.655 min
 Delta R.T.: 0.000 min
 Response: 712856030
 Conc: 57.15 ng/ml



#4 Heptachlor
 R.T.: 4.514 min
 Delta R.T.: 0.000 min
 Response: 65332307
 Conc: 56.12 ng/ml

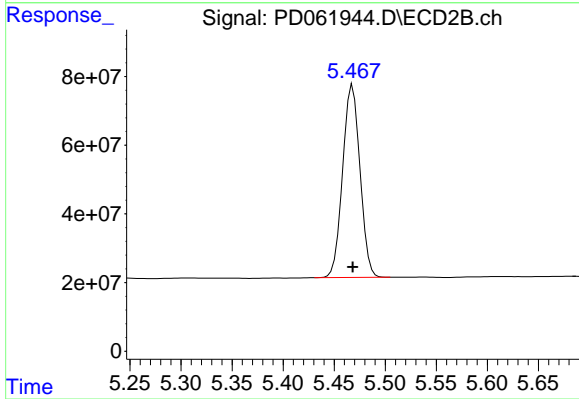


#4 Heptachlor
 R.T.: 5.164 min
 Delta R.T.: 0.002 min
 Response: 696473630
 Conc: 53.45 ng/ml

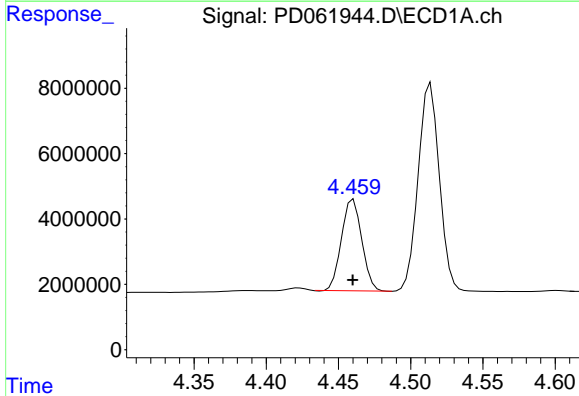


#5 Aldrin
 R.T.: 4.763 min
 Delta R.T.: 0.000 min
 Response: 64803142
 Conc: 54.00 ng/ml

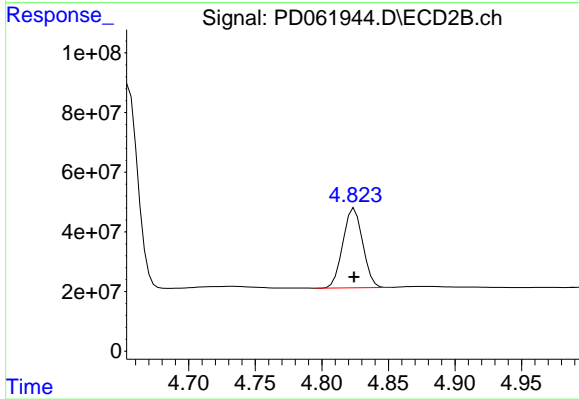
Instrument :
 ECD_D
 ClientSampled :



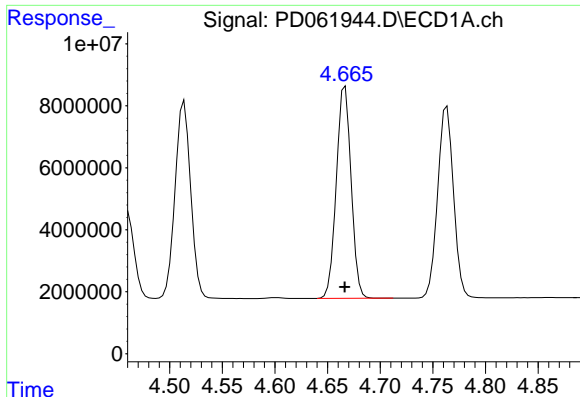
#5 Aldrin
 R.T.: 5.468 min
 Delta R.T.: 0.000 min
 Response: 663724783
 Conc: 53.34 ng/ml



#6 beta-BHC
 R.T.: 4.460 min
 Delta R.T.: 0.000 min
 Response: 27385484
 Conc: 50.22 ng/ml



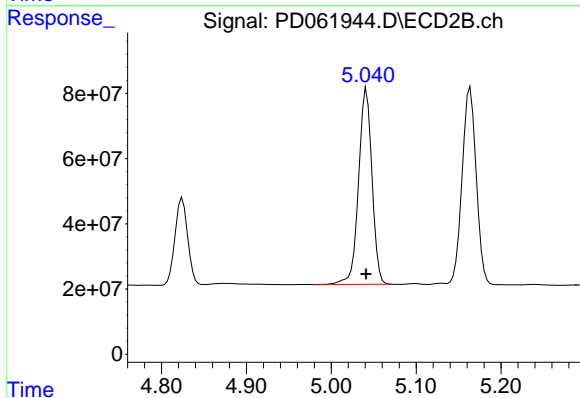
#6 beta-BHC
 R.T.: 4.824 min
 Delta R.T.: 0.000 min
 Response: 276824431
 Conc: 53.59 ng/ml



#7 delta-BHC

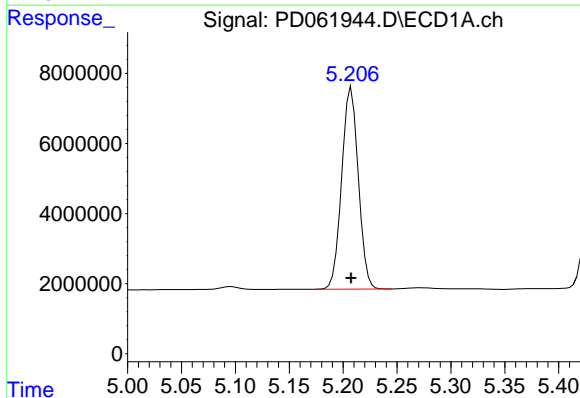
R.T.: 4.667 min
 Delta R.T.: 0.000 min
 Response: 66882198
 Conc: 55.06 ng/ml

Instrument :
 ECD_D
 ClientSampleId :



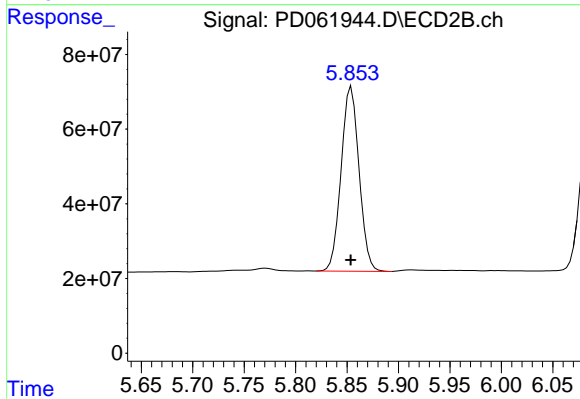
#7 delta-BHC

R.T.: 5.041 min
 Delta R.T.: 0.000 min
 Response: 660253767
 Conc: 49.92 ng/ml



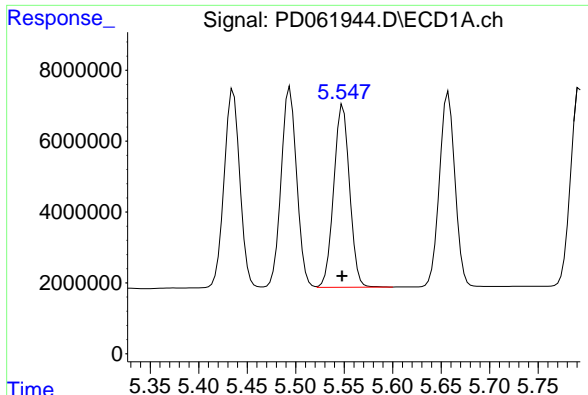
#8 Heptachlor epoxide

R.T.: 5.208 min
 Delta R.T.: 0.000 min
 Response: 61827996
 Conc: 53.93 ng/ml



#8 Heptachlor epoxide

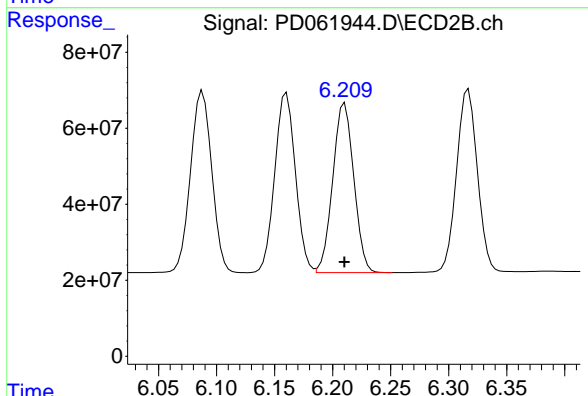
R.T.: 5.854 min
 Delta R.T.: 0.000 min
 Response: 599339425
 Conc: 50.62 ng/ml



#9 Endosulfan I

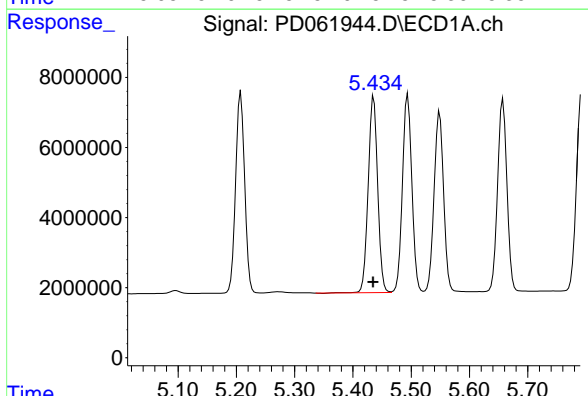
R.T.: 5.549 min
 Delta R.T.: 0.000 min
 Response: 58514038
 Conc: 53.29 ng/ml

Instrument :
 ECD_D
 ClientSampled :



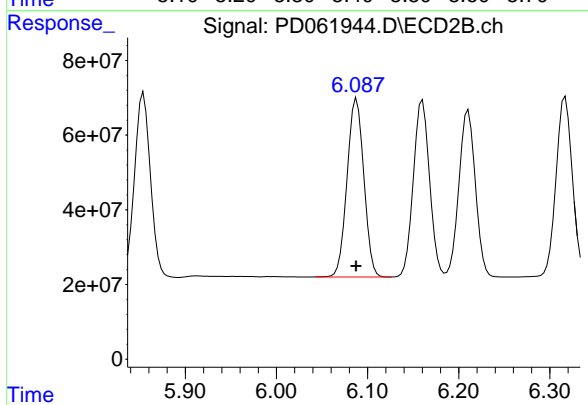
#9 Endosulfan I

R.T.: 6.210 min
 Delta R.T.: 0.000 min
 Response: 563462730
 Conc: 51.98 ng/ml



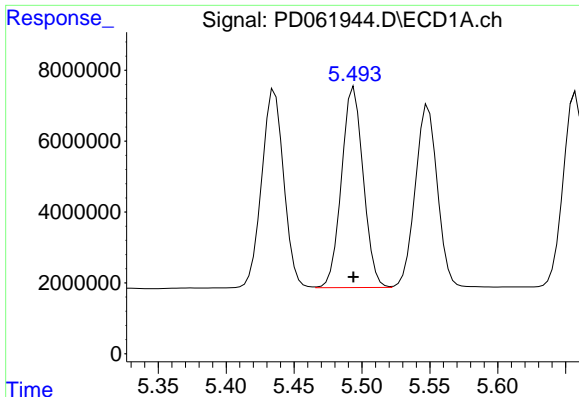
#10 gamma-Chlordane

R.T.: 5.436 min
 Delta R.T.: 0.000 min
 Response: 63400071
 Conc: 54.13 ng/ml



#10 gamma-Chlordane

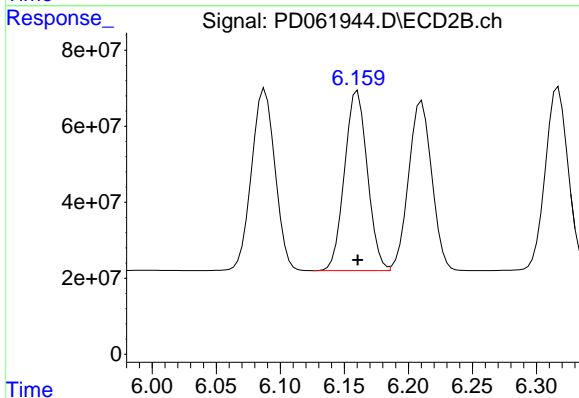
R.T.: 6.088 min
 Delta R.T.: 0.000 min
 Response: 611175942
 Conc: 51.55 ng/ml



#11 alpha-Chlordane

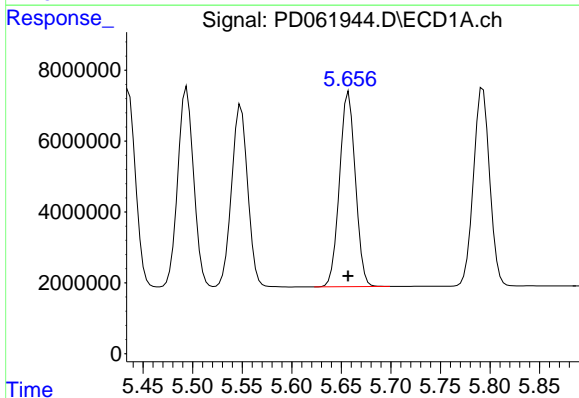
R.T.: 5.494 min
 Delta R.T.: 0.000 min
 Response: 63173577
 Conc: 54.37 ng/ml

Instrument :
 ECD_D
 ClientSampleId :



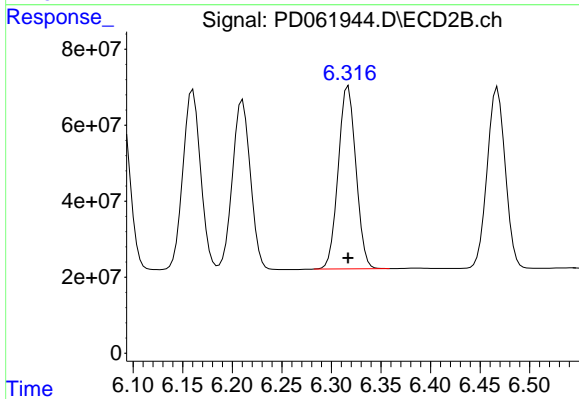
#11 alpha-Chlordane

R.T.: 6.160 min
 Delta R.T.: 0.000 min
 Response: 587284201
 Conc: 51.52 ng/ml



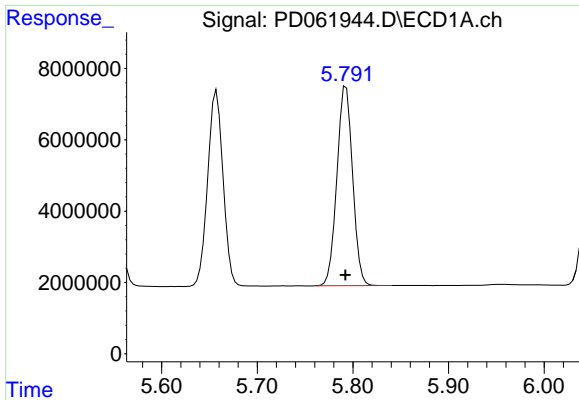
#12 4,4'-DDE

R.T.: 5.658 min
 Delta R.T.: 0.000 min
 Response: 61195219
 Conc: 54.46 ng/ml



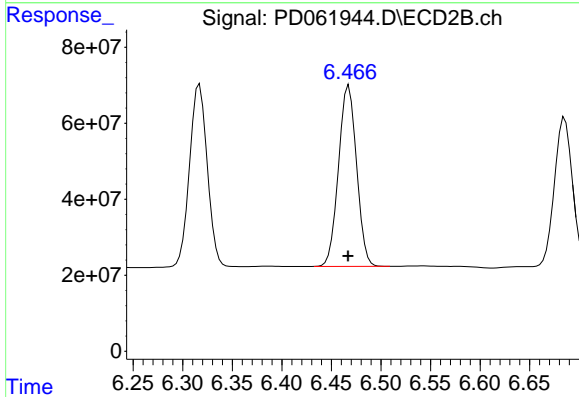
#12 4,4'-DDE

R.T.: 6.317 min
 Delta R.T.: 0.000 min
 Response: 598038062
 Conc: 51.89 ng/ml

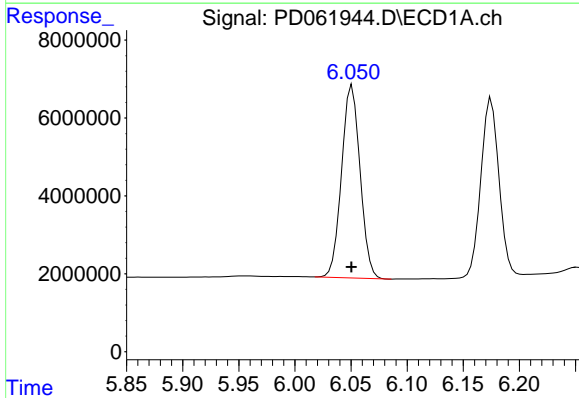


#13 Dieldrin
 R.T.: 5.793 min
 Delta R.T.: 0.000 min
 Response: 63748195
 Conc: 55.15 ng/ml

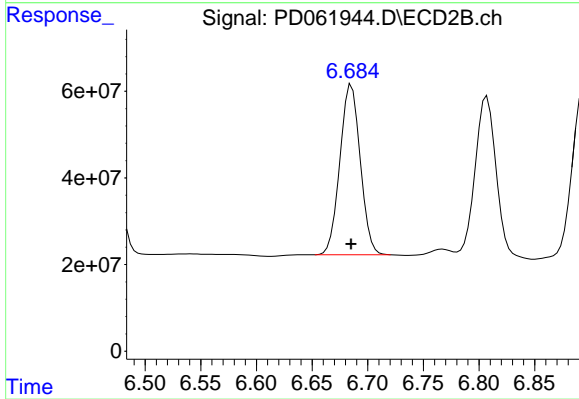
Instrument :
 ECD_D
 ClientSampleId :



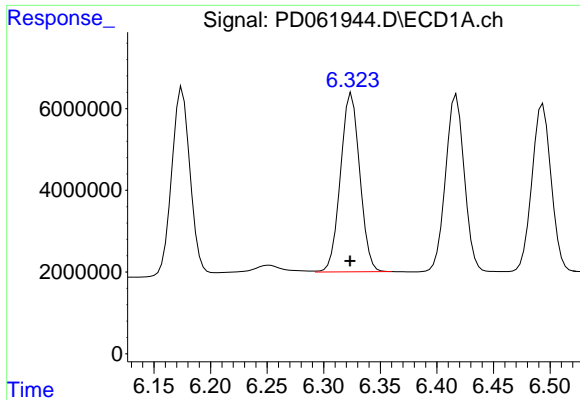
#13 Dieldrin
 R.T.: 6.468 min
 Delta R.T.: 0.000 min
 Response: 604410465
 Conc: 52.36 ng/ml



#14 Endrin
 R.T.: 6.051 min
 Delta R.T.: 0.000 min
 Response: 56647250
 Conc: 55.13 ng/ml



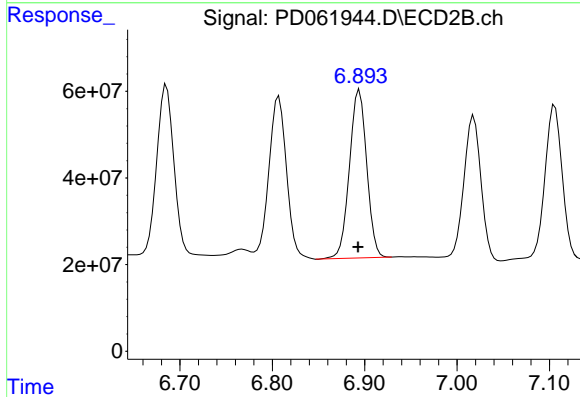
#14 Endrin
 R.T.: 6.685 min
 Delta R.T.: 0.000 min
 Response: 500950624
 Conc: 50.62 ng/ml



#15 Endosulfan II

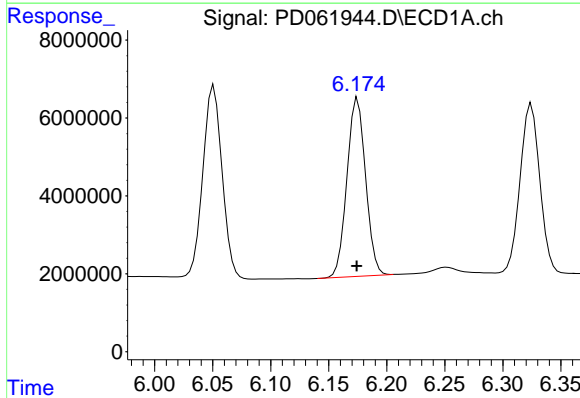
R.T.: 6.325 min
 Delta R.T.: 0.001 min
 Response: 51887415
 Conc: 50.63 ng/ml

Instrument :
 ECD_D
 ClientSampled :



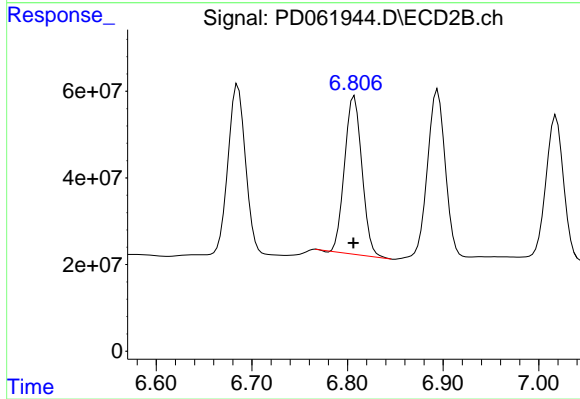
#15 Endosulfan II

R.T.: 6.894 min
 Delta R.T.: 0.001 min
 Response: 504827993
 Conc: 53.17 ng/ml



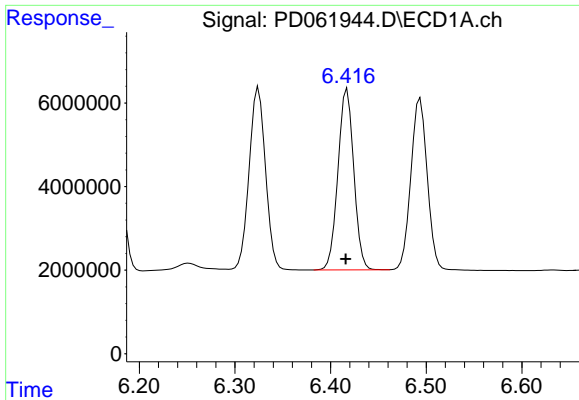
#16 4,4'-DDD

R.T.: 6.175 min
 Delta R.T.: 0.000 min
 Response: 51170343
 Conc: 54.98 ng/ml



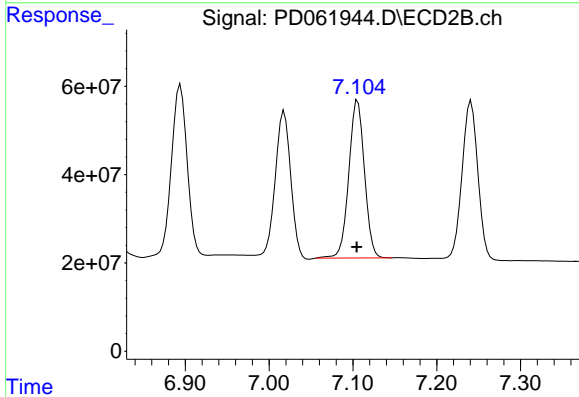
#16 4,4'-DDD

R.T.: 6.807 min
 Delta R.T.: 0.000 min
 Response: 460387565
 Conc: 48.62 ng/ml

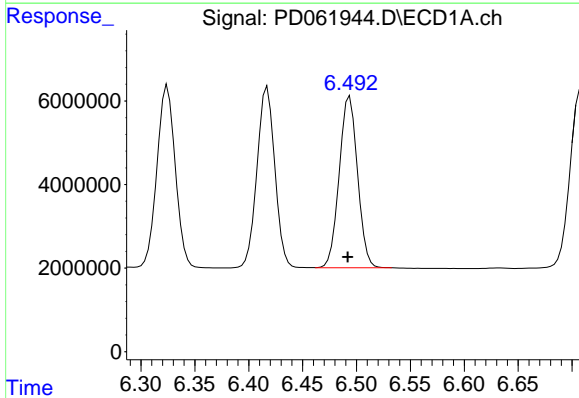


#17 4,4'-DDT
R.T.: 6.417 min
Delta R.T.: 0.002 min
Response: 49968867
Conc: 55.48 ng/ml

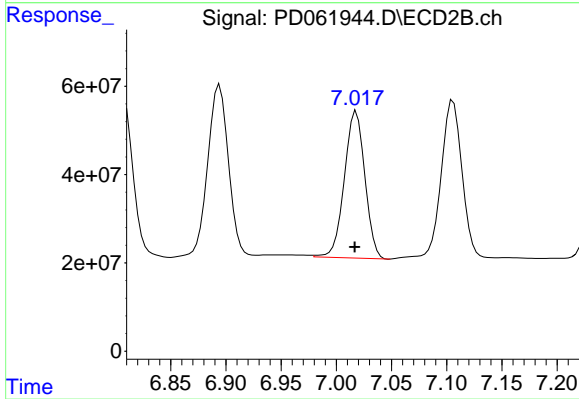
Instrument :
ECD_D
ClientSampled :



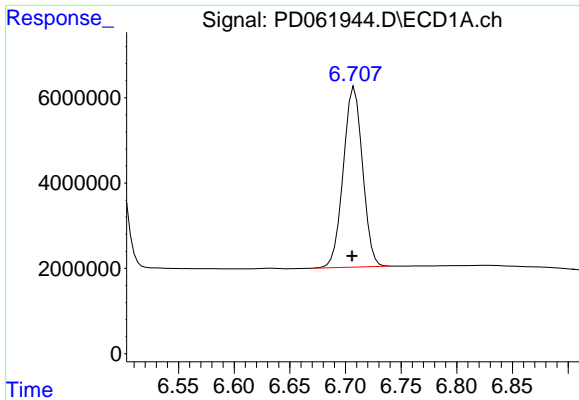
#17 4,4'-DDT
R.T.: 7.106 min
Delta R.T.: 0.001 min
Response: 465665452
Conc: 48.75 ng/ml



#18 Endrin aldehyde
R.T.: 6.494 min
Delta R.T.: 0.002 min
Response: 48587995
Conc: 56.87 ng/ml

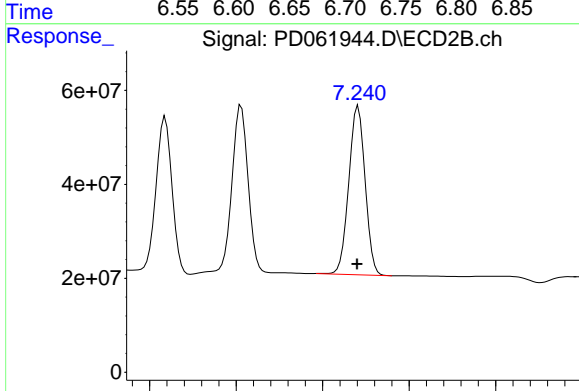


#18 Endrin aldehyde
R.T.: 7.018 min
Delta R.T.: 0.001 min
Response: 430125827
Conc: 54.69 ng/ml

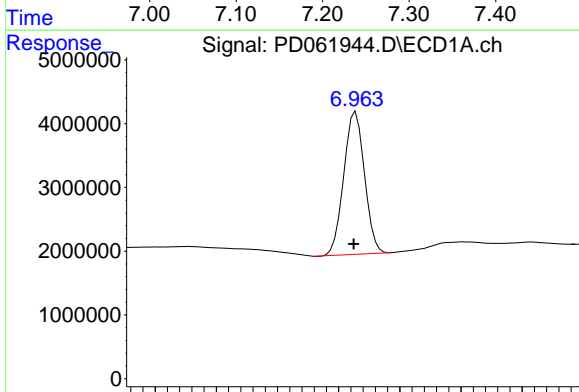


#19 Endosulfan Sulfate
 R.T.: 6.708 min
 Delta R.T.: 0.002 min
 Response: 50950318
 Conc: 47.22 ng/ml

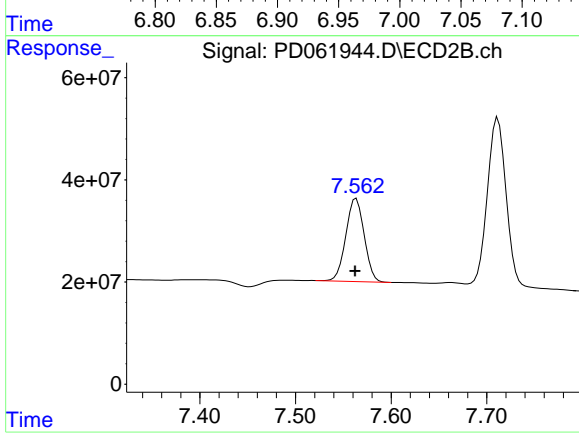
Instrument :
 ECD_D
 ClientSampled :



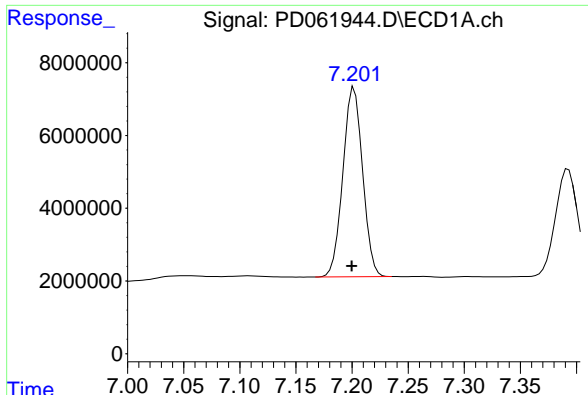
#19 Endosulfan Sulfate
 R.T.: 7.241 min
 Delta R.T.: 0.001 min
 Response: 470508177
 Conc: 46.95 ng/ml



#20 Methoxychlor
 R.T.: 6.964 min
 Delta R.T.: 0.002 min
 Response: 26335269
 Conc: 55.74 ng/ml

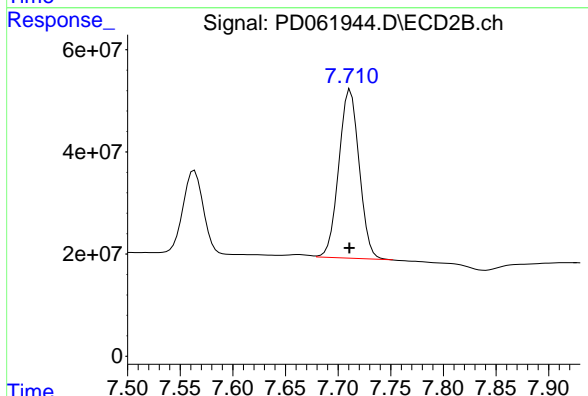


#20 Methoxychlor
 R.T.: 7.564 min
 Delta R.T.: 0.001 min
 Response: 217421368
 Conc: 48.23 ng/ml

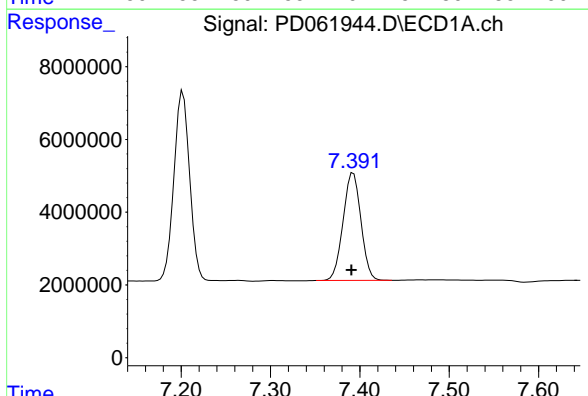


#21 Endrin ketone
 R.T.: 7.202 min
 Delta R.T.: 0.002 min
 Response: 63602987
 Conc: 49.84 ng/ml

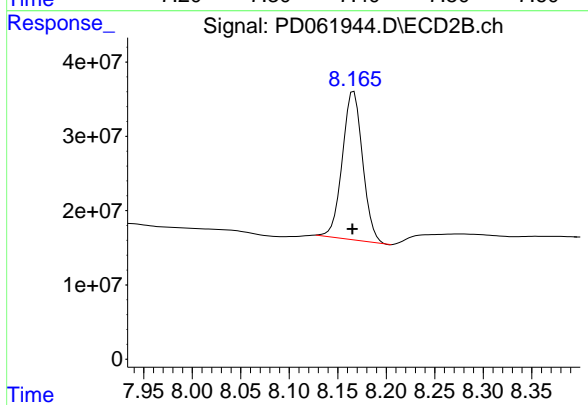
Instrument :
 ECD_D
 ClientSampleId :



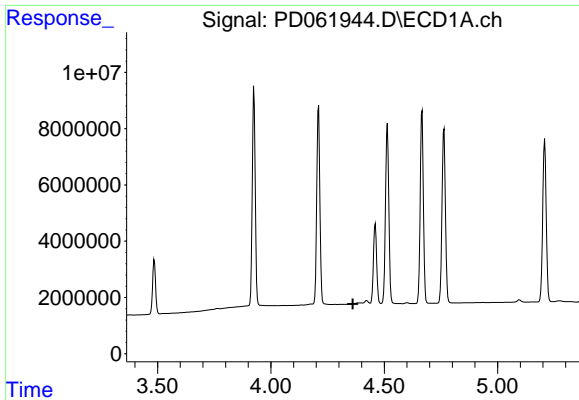
#21 Endrin ketone
 R.T.: 7.712 min
 Delta R.T.: 0.000 min
 Response: 446065807
 Conc: 43.98 ng/ml



#22 Mirex
 R.T.: 7.393 min
 Delta R.T.: 0.002 min
 Response: 41024210
 Conc: 48.81 ng/ml



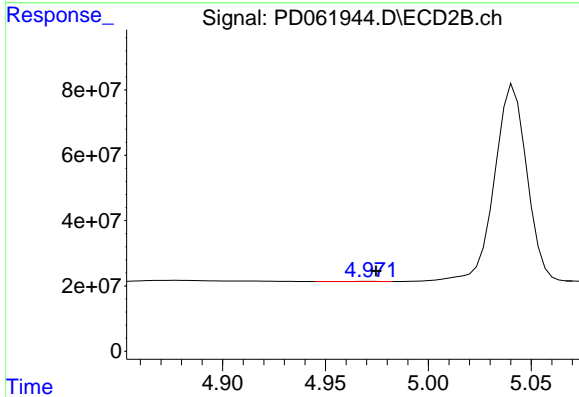
#22 Mirex
 R.T.: 8.167 min
 Delta R.T.: 0.001 min
 Response: 290444436
 Conc: 45.07 ng/ml



#23 Chlordane-1

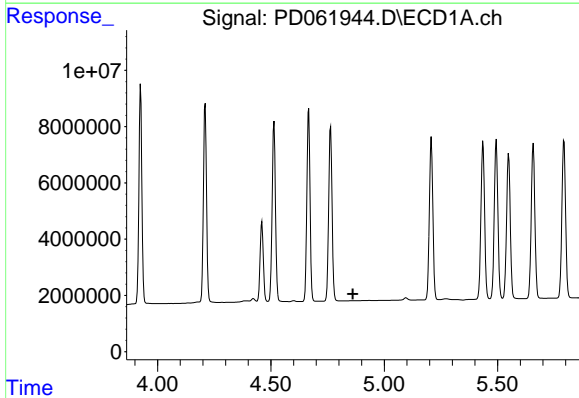
R.T.: 0.000 min
 Exp R.T. : 4.361 min
 Response: 0
 Conc: N.D.

Instrument :
 ECD_D
 ClientSampleId :



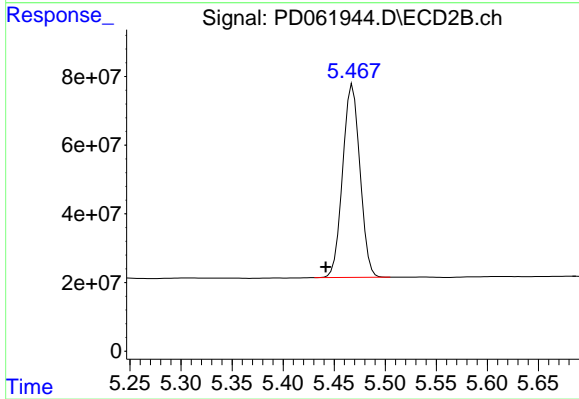
#23 Chlordane-1

R.T.: 4.972 min
 Delta R.T.: -0.002 min
 Response: 464268
 Conc: 1.20 ng/ml



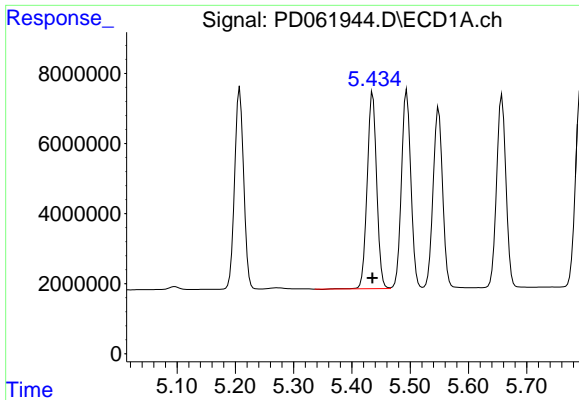
#24 Chlordane-2

R.T.: 0.000 min
 Exp R.T. : 4.862 min
 Response: 0
 Conc: N.D.



#24 Chlordane-2

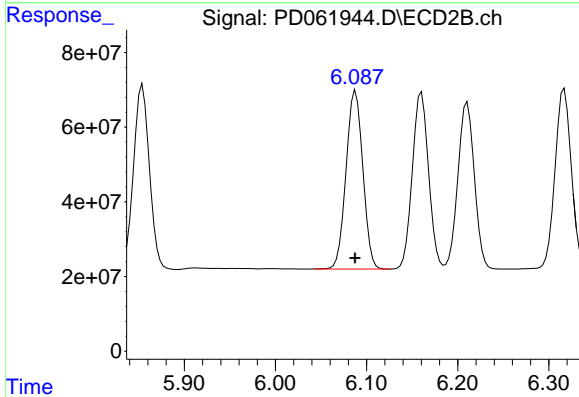
R.T.: 5.468 min
 Delta R.T.: 0.026 min
 Response: 663724783
 Conc: 1729.74 ng/ml



#25 Chlordane-3

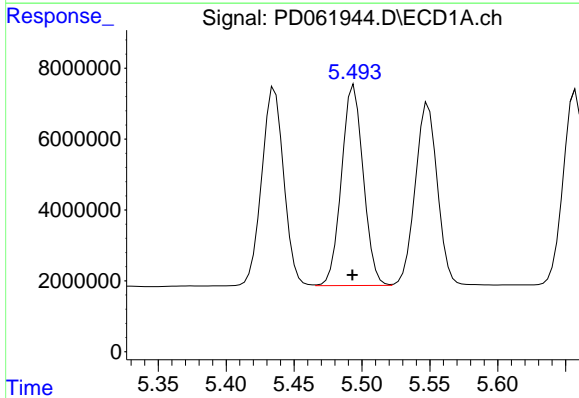
R.T.: 5.436 min
 Delta R.T.: 0.000 min
 Response: 63400071
 Conc: 546.50 ng/ml

Instrument :
 ECD_D
 ClientSampleId :



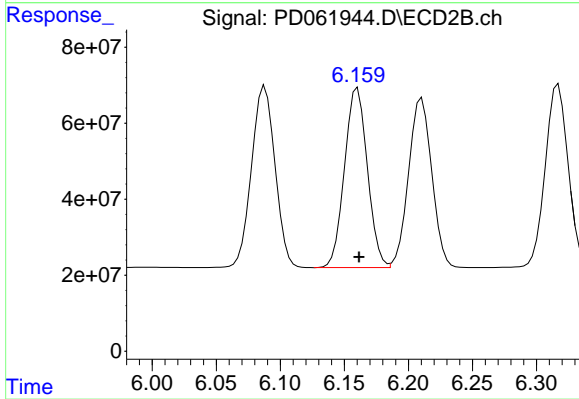
#25 Chlordane-3

R.T.: 6.088 min
 Delta R.T.: 0.000 min
 Response: 611175942
 Conc: 368.68 ng/ml



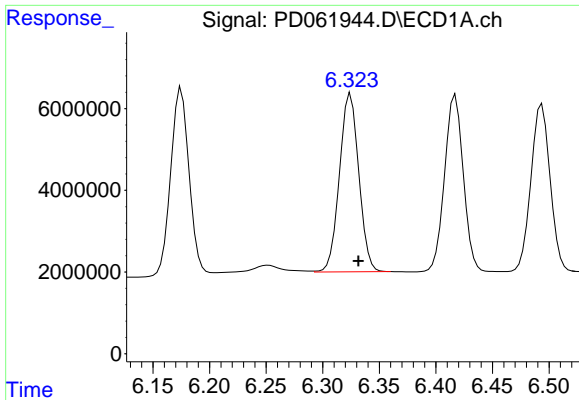
#26 Chlordane-4

R.T.: 5.494 min
 Delta R.T.: 0.001 min
 Response: 63173577
 Conc: 656.64 ng/ml



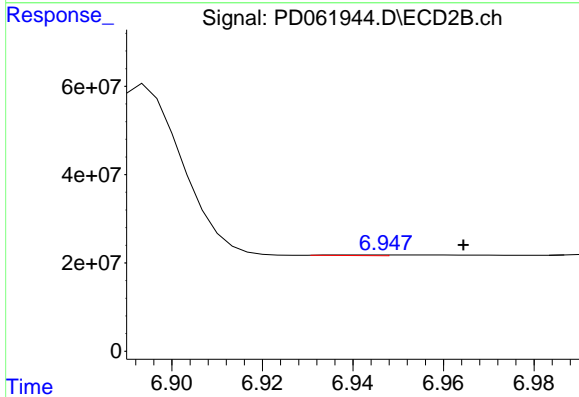
#26 Chlordane-4

R.T.: 6.160 min
 Delta R.T.: -0.001 min
 Response: 587284201
 Conc: 306.04 ng/ml

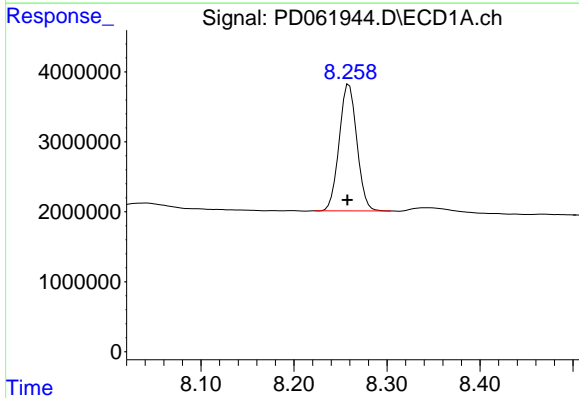


#27 Chlordane-5
 R.T.: 6.325 min
 Delta R.T.: -0.007 min
 Response: 51887415
 Conc: 1178.35 ng/ml

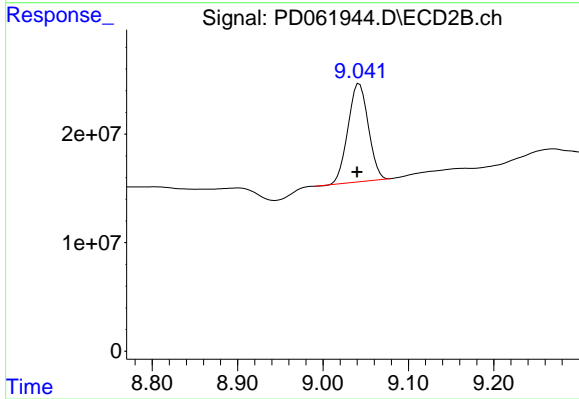
Instrument :
 ECD_D
 ClientSampleId :



#27 Chlordane-5
 R.T.: 6.941 min
 Delta R.T.: -0.023 min
 Response: 1178531
 Conc: 3.27 ng/ml



#28 Decachlorobiphenyl
 R.T.: 8.259 min
 Delta R.T.: 0.002 min
 Response: 23908158
 Conc: 19.43 ng/ml



#28 Decachlorobiphenyl
 R.T.: 9.043 min
 Delta R.T.: 0.003 min
 Response: 149235304
 Conc: 15.81 ng/ml