

Data Path : Z:\pestpcbsrv\HPCHEM1\ECD_D\Data\PD040220\
 Data File : PD057692.D
 Signal(s) : Signal #1: ECD1A.ch Signal #2: ECD2B.ch
 Acq On : 02 Apr 2020 16:03
 Operator : AJ\MA
 Sample : PB127978BL
 Misc :
 ALS Vial : 10 Sample Multiplier: 1

Instrument :
 ECD_D
 ClientSampled :

Integration File signal 1: autoint1.e
 Integration File signal 2: autoint2.e
 Quant Time: Apr 03 02:53:27 2020
 Quant Method : Z:\pestpcbsrv\HPCHEM1\ECD_D\Method\PD032720.M
 Quant Title : GC Extractables
 QLast Update : Fri Mar 27 14:08:11 2020
 Response via : Initial Calibration
 Integrator: ChemStation

Volume Inj. : 2 µl
 Signal #1 Phase : ZB-MR2 Signal #2 Phase: ZB-MR1
 Signal #1 Info : 30M x 0.32mm x0.2 Signal #2 Info : 30M x 0.32mm x 0.50µm

Compound	RT#1	RT#2	Resp#1	Resp#2	ng/ml	ng/ml
System Monitoring Compounds						
1) SA Tetrachlo...	3.227	3.896	15475525	19570708	21.675	24.945
28) SA Decachlor...	7.869	8.901	19399259	22317406	25.479	25.374
Target Compounds						
3) MA gamma-BHC...	3.927	0.000	1873005	0	1.740	N.D. #
5) MB Aldrin	4.463f	0.000	513888	0	0.524	N.D. #
7) B delta-BHC	4.360	0.000	285253	0	0.276	N.D. #
8) B Heptachlo...	4.877	0.000	262177	0	0.309	N.D. #
9) A Endosulfan I	5.168f	0.000	99759	0	0.120	N.D. #
10) B gamma-Chl...	5.102	0.000	104582	0	0.114	N.D. #
11) B alpha-Chl...	5.168f	0.000	99759	0	0.109	N.D. #
24) Chlordane-2	4.539	0.000	286669	0	9.999	N.D. #
25) Chlordane-3	5.102	0.000	104582	0	1.191	N.D. #
26) Chlordane-4	5.168f	0.000	99759	0	1.234	N.D. #

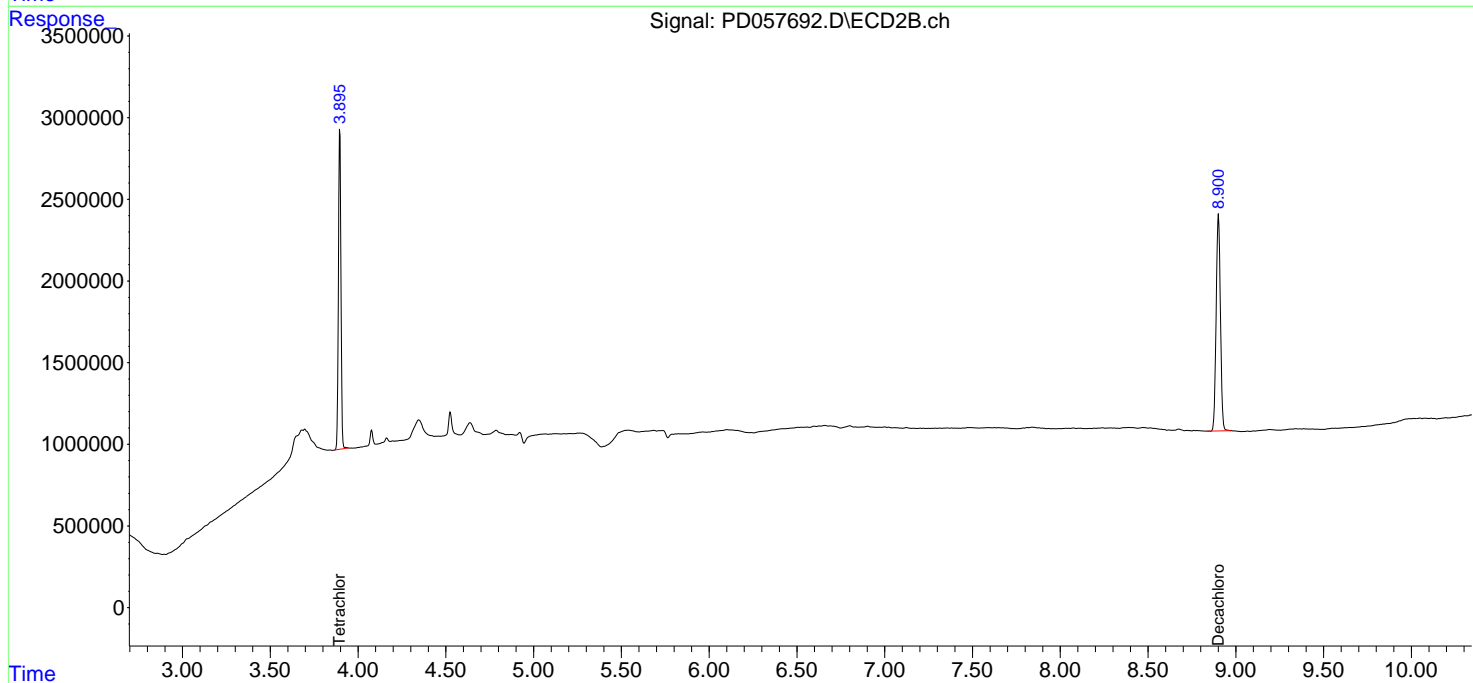
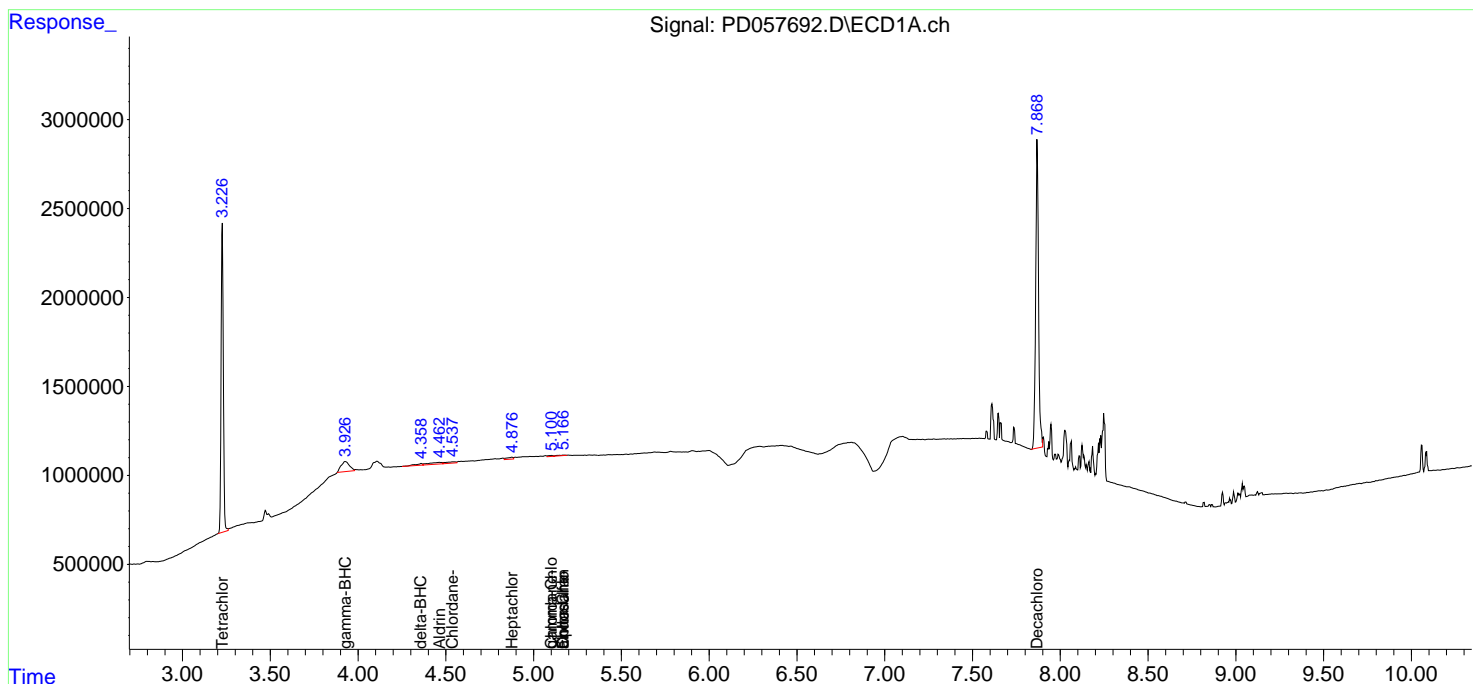
(f)=RT Delta > 1/2 Window (#)=Amounts differ by > 25% (m)=manual int.

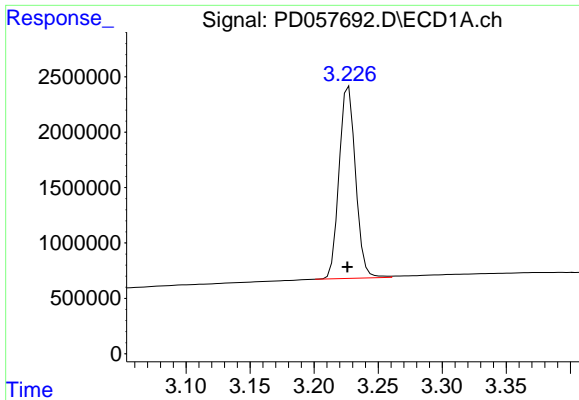
Data Path : Z:\pestpcbsrv\HPCHEM1\ECD_D\Data\PD040220\
 Data File : PD057692.D
 Signal(s) : Signal #1: ECD1A.ch Signal #2: ECD2B.ch
 Acq On : 02 Apr 2020 16:03
 Operator : AJ\MA
 Sample : PB127978BL
 Misc :
 ALS Vial : 10 Sample Multiplier: 1

Instrument :
 ECD_D
 ClientSampled :

Integration File signal 1: autoint1.e
 Integration File signal 2: autoint2.e
 Quant Time: Apr 03 02:53:27 2020
 Quant Method : Z:\pestpcbsrv\HPCHEM1\ECD_D\Method\PD032720.M
 Quant Title : GC Extractables
 QLast Update : Fri Mar 27 14:08:11 2020
 Response via : Initial Calibration
 Integrator: ChemStation

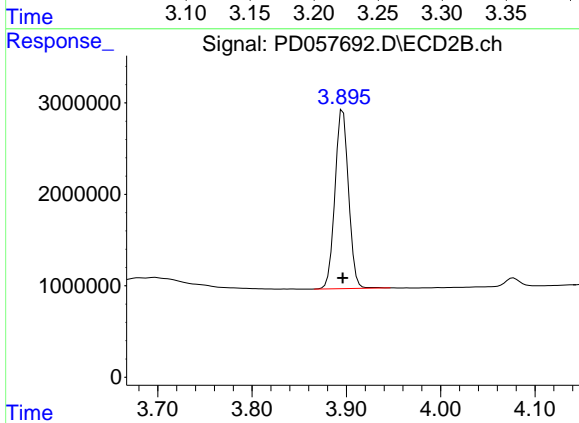
Volume Inj. : 2 µl
 Signal #1 Phase : ZB-MR2 Signal #2 Phase: ZB-MR1
 Signal #1 Info : 30M x 0.32mm x0.2 Signal #2 Info : 30M x 0.32mm x 0.50µm



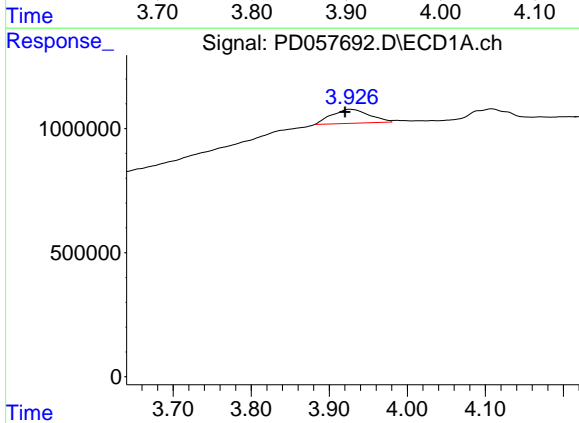


#1 Tetrachloro-m-xylene
 R.T.: 3.227 min
 Delta R.T.: 0.001 min
 Response: 15475525
 Conc: 21.67 ng/ml

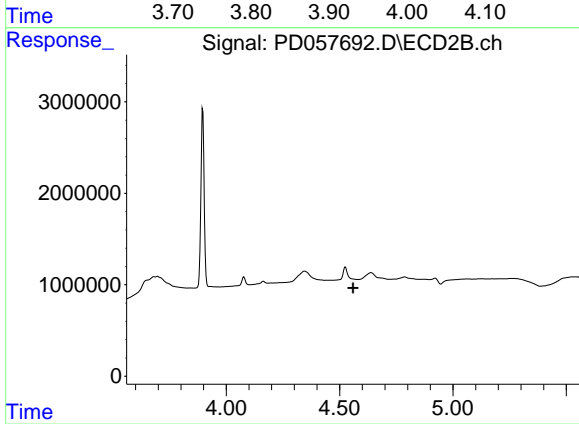
Instrument :
 ECD_D
 ClientSampled :



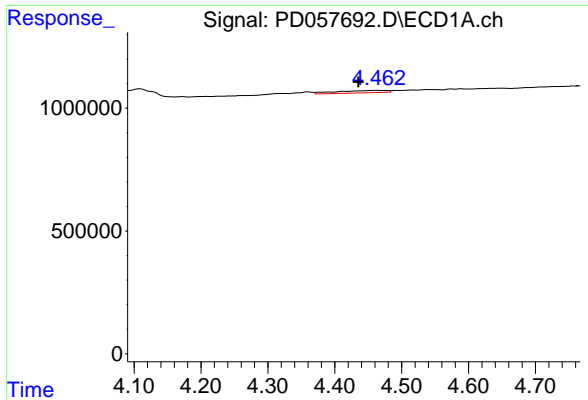
#1 Tetrachloro-m-xylene
 R.T.: 3.896 min
 Delta R.T.: 0.000 min
 Response: 19570708
 Conc: 24.95 ng/ml



#3 gamma-BHC (Lindane)
 R.T.: 3.927 min
 Delta R.T.: 0.007 min
 Response: 1873005
 Conc: 1.74 ng/ml

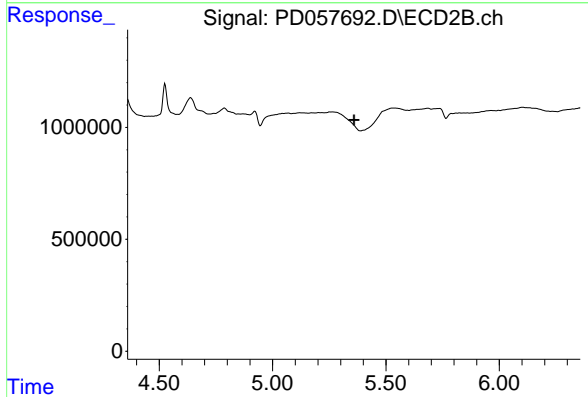


#3 gamma-BHC (Lindane)
 R.T.: 0.000 min
 Exp R.T. : 4.560 min
 Response: 0
 Conc: N.D.

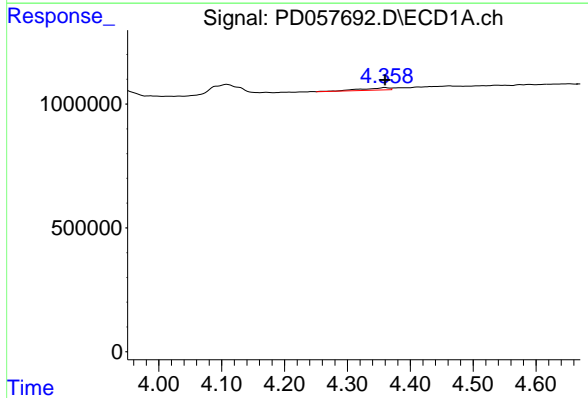


#5 Aldrin
 R.T.: 4.463 min
 Delta R.T.: 0.028 min
 Response: 513888
 Conc: 0.52 ng/ml

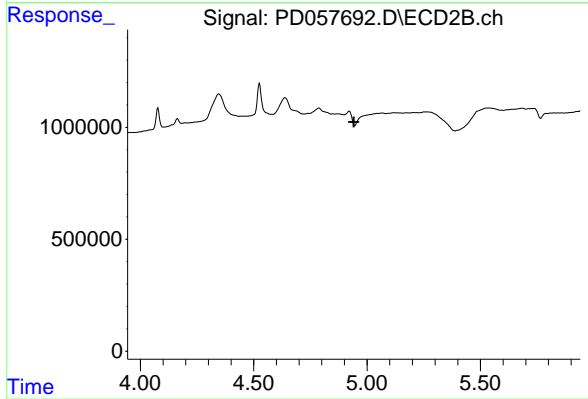
Instrument :
 ECD_D
 ClientSampleId :



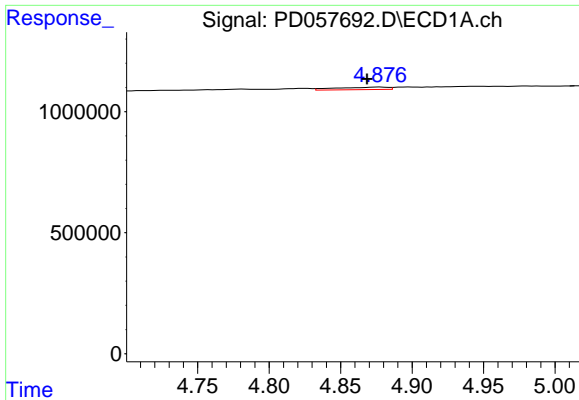
#5 Aldrin
 R.T.: 0.000 min
 Exp R.T. : 5.360 min
 Response: 0
 Conc: N.D.



#7 delta-BHC
 R.T.: 4.360 min
 Delta R.T.: 0.000 min
 Response: 285253
 Conc: 0.28 ng/ml

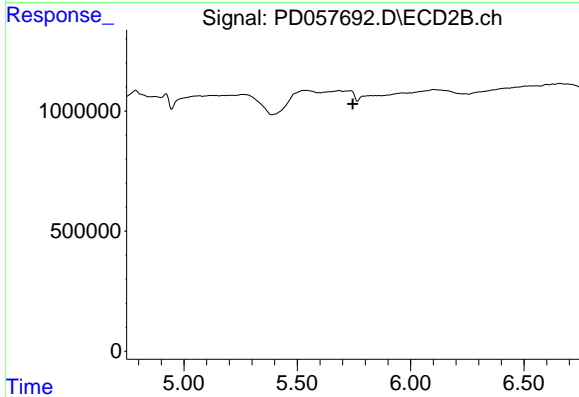


#7 delta-BHC
 R.T.: 0.000 min
 Exp R.T. : 4.941 min
 Response: 0
 Conc: N.D.

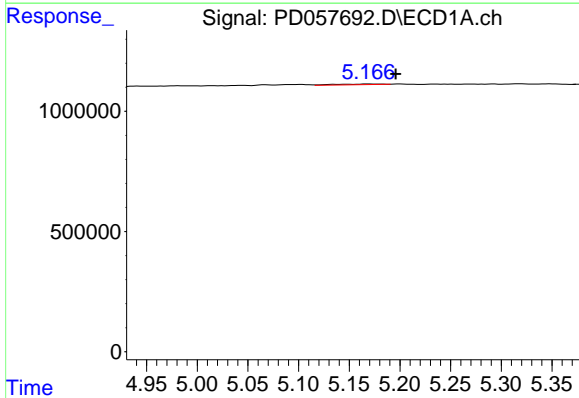


#8 Heptachlor epoxide
 R.T.: 4.877 min
 Delta R.T.: 0.009 min
 Response: 262177
 Conc: 0.31 ng/ml

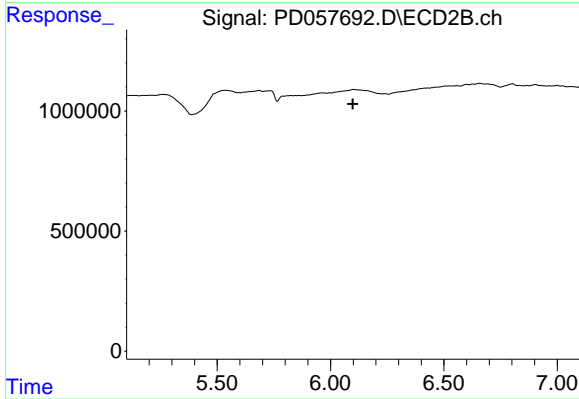
Instrument :
 ECD_D
 ClientSampleId :



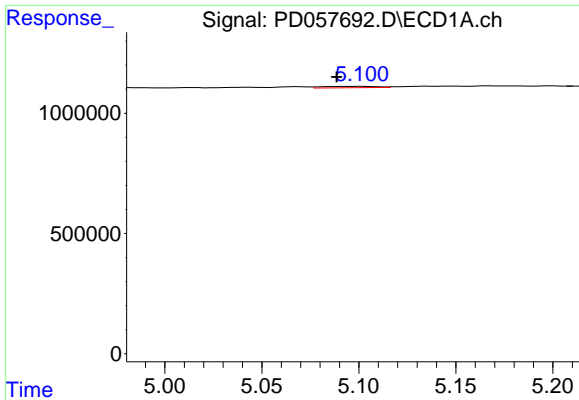
#8 Heptachlor epoxide
 R.T.: 0.000 min
 Exp R.T. : 5.745 min
 Response: 0
 Conc: N.D.



#9 Endosulfan I
 R.T.: 5.168 min
 Delta R.T.: -0.028 min
 Response: 99759
 Conc: 0.12 ng/ml

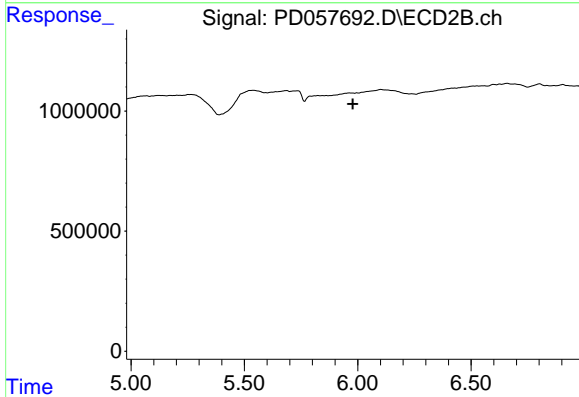


#9 Endosulfan I
 R.T.: 0.000 min
 Exp R.T. : 6.098 min
 Response: 0
 Conc: N.D.

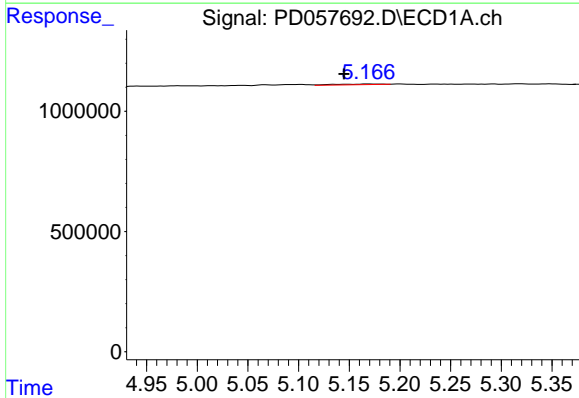


#10 gamma-Chlordane
 R.T.: 5.102 min
 Delta R.T.: 0.013 min
 Response: 104582
 Conc: 0.11 ng/ml

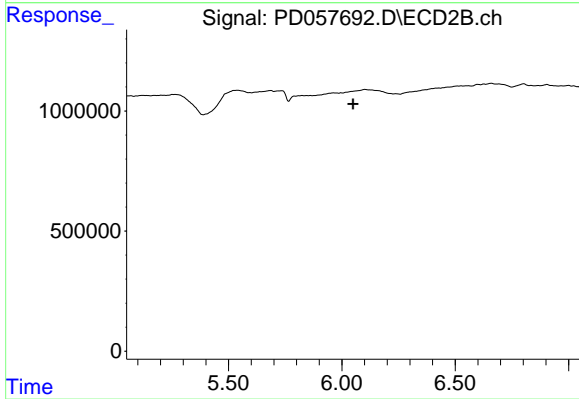
Instrument :
 ECD_D
 ClientSampled :



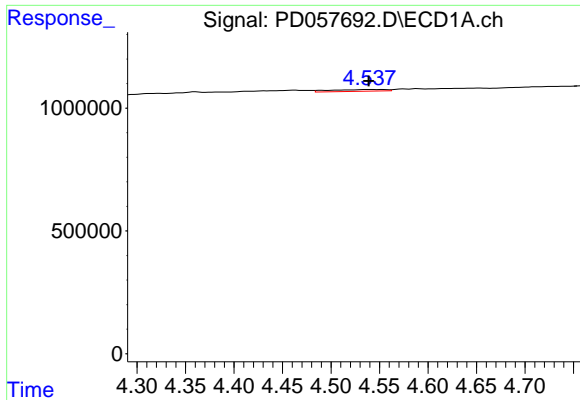
#10 gamma-Chlordane
 R.T.: 0.000 min
 Exp R.T. : 5.978 min
 Response: 0
 Conc: N.D.



#11 alpha-Chlordane
 R.T.: 5.168 min
 Delta R.T.: 0.023 min
 Response: 99759
 Conc: 0.11 ng/ml

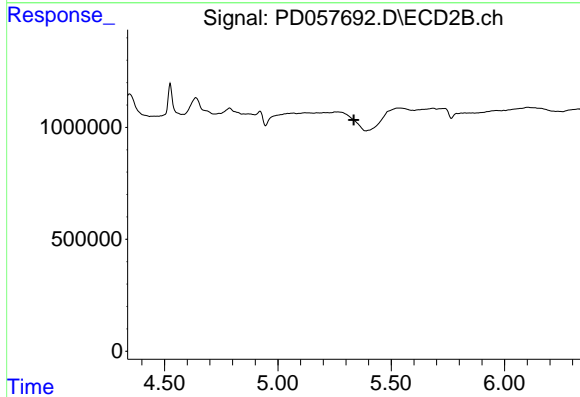


#11 alpha-Chlordane
 R.T.: 0.000 min
 Exp R.T. : 6.050 min
 Response: 0
 Conc: N.D.

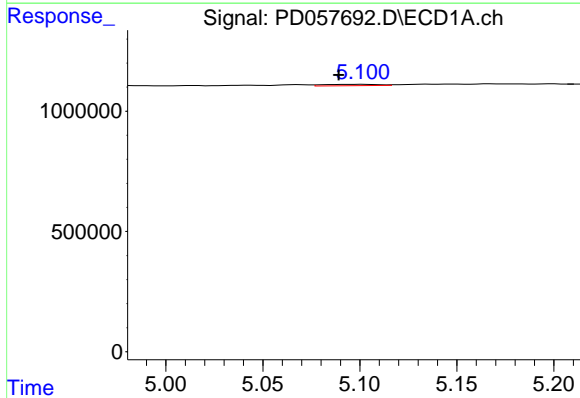


#24 Chlordane-2
 R.T.: 4.539 min
 Delta R.T.: 0.000 min
 Response: 286669
 Conc: 10.00 ng/ml

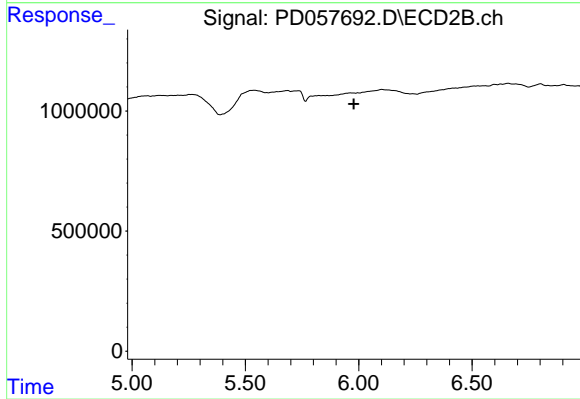
Instrument :
 ECD_D
 ClientSampleId :



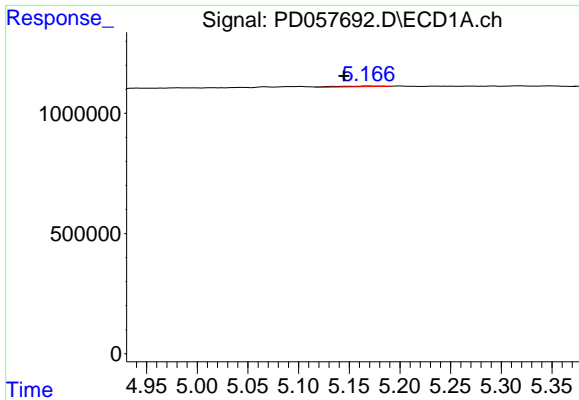
#24 Chlordane-2
 R.T.: 0.000 min
 Exp R.T. : 5.335 min
 Response: 0
 Conc: N.D.



#25 Chlordane-3
 R.T.: 5.102 min
 Delta R.T.: 0.013 min
 Response: 104582
 Conc: 1.19 ng/ml

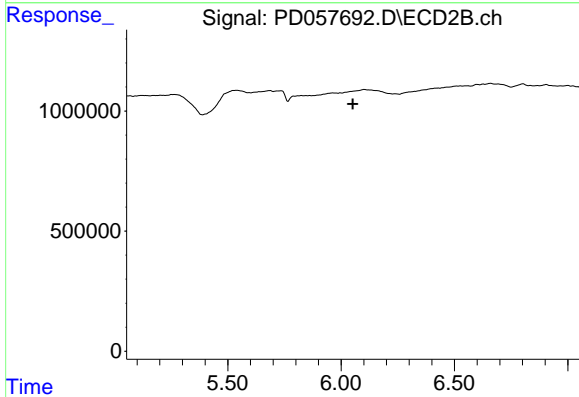


#25 Chlordane-3
 R.T.: 0.000 min
 Exp R.T. : 5.978 min
 Response: 0
 Conc: N.D.

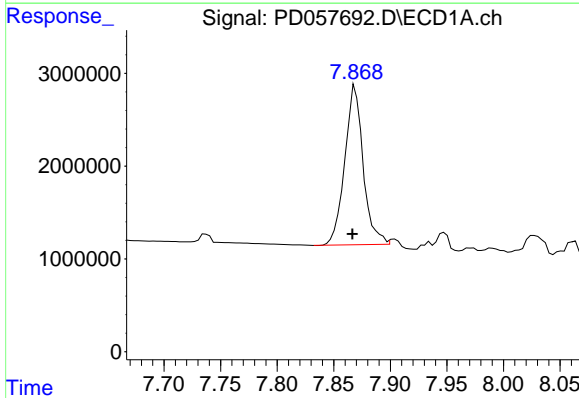


#26 Chlordane-4
 R.T.: 5.168 min
 Delta R.T.: 0.023 min
 Response: 99759
 Conc: 1.23 ng/ml

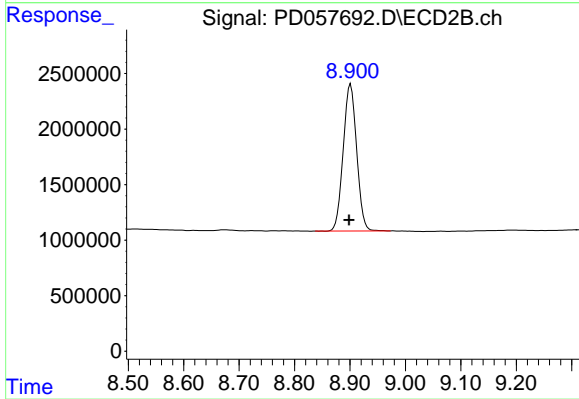
Instrument :
 ECD_D
 ClientSampleId :



#26 Chlordane-4
 R.T.: 0.000 min
 Exp R.T. : 6.052 min
 Response: 0
 Conc: N.D.



#28 Decachlorobiphenyl
 R.T.: 7.869 min
 Delta R.T.: 0.002 min
 Response: 19399259
 Conc: 25.48 ng/ml



#28 Decachlorobiphenyl
 R.T.: 8.901 min
 Delta R.T.: 0.003 min
 Response: 22317406
 Conc: 25.37 ng/ml