

Data Path : Z:\pestpcbsrv\HPCHEM1\ECD_0\Data\P0040220\
 Data File : P0067636.D
 Signal(s) : Signal #1: ECD1A.CH Signal #2: ECD2B.CH
 Acq On : 02 Apr 2020 19:33
 Operator : DD\AJ
 Sample : L2129-06
 Misc :
 ALS Vial : 37 Sample Multiplier: 1

Instrument :
 ECD_D
 ClientSampled :
 TP-8

Integration File signal 1: autoint1.e
 Integration File signal 2: autoint2.e
 Quant Time: Apr 03 03:15:40 2020
 Quant Method : Z:\pestpcbsrv\HPCHEM1\ECD_0\methods\P0040120.M
 Quant Title : GC EXTRACTABLES
 QLast Update : Wed Apr 01 17:26:29 2020
 Response via : Initial Calibration
 Integrator: ChemStation 6890 Scale Mode: Small noise peaks clipped

Volume Inj. : 2 µl
 Signal #1 Phase : ZB-MR1 Signal #2 Phase: ZB-MR2
 Signal #1 Info : 30Mx0.32mmx 0.50µ Signal #2 Info : 30M x 0.32mm x 0.25µm

Compound	RT#1	RT#2	Resp#1	Resp#2	ng/ml	ng/ml

System Monitoring Compounds						
1) SA Tetrachlo...	4.935	3.944	524861	807309	22.040	24.086
2) SA Decachlor...	10.921	9.234	662398	743741	19.457	17.988
Target Compounds						
10) L2 AR-1221-3	0.000	4.437	0	69619	N.D.	70.914 #
11) L3 AR-1232-1	0.000	4.437	0	69619	N.D.	100.596 #
20) L4 AR-1242-5	0.000	6.071	0	43319	N.D.	46.294 #
25) L5 AR-1248-5	0.000	6.071	0	43319	N.D.	35.006 #
26) L6 AR-1254-1	0.000	6.071	0	43319	N.D.	22.333 #
27) L6 AR-1254-2	7.395	6.231	24274	56709	15.691	32.552 #
28) L6 AR-1254-3	7.775	6.649	75569	201276	46.222	72.655 #
29) L6 AR-1254-4	8.069	6.889	47776	50296	37.277	27.522 #
30) L6 AR-1254-5	8.547	7.318	2796667	208753	2032.874	81.933 #
31) L7 AR-1260-1	7.940	6.787	129673	163206	95.953	77.849
32) L7 AR-1260-2	8.204	6.985	199708	131927	118.298	51.378 #
33) L7 AR-1260-3	8.547	7.138	2796667	99053	2145.532	41.192 #
34) L7 AR-1260-4	8.795	7.622	71257	69218	46.367	32.934 #
35) L7 AR-1260-5	9.121	7.869	78522	180321	24.891	35.619 #
36) L8 AR-1262-1	8.547	7.318	2796667	208753	1668.195	150.646 #
37) L8 AR-1262-2	9.121	7.869	78522	180321	27.365	39.440 #
38) L8 AR-1262-3	9.430	8.156	46335	179313	22.267	91.232 #
39) L8 AR-1262-4	9.523	8.218	74600	171126	47.145	49.920
40) L8 AR-1262-5	10.182	8.715	55098	54109	46.729	31.832 #
41) L9 AR-1268-1	9.430	8.156	46335	179313	12.539	33.326 #
42) L9 AR-1268-2	9.523	8.218	74600	171126	21.524	34.658 #
43) L9 AR-1268-3	9.687	8.428	40024	29771	13.783	7.103 #
44) L9 AR-1268-4	10.182	8.715	55098	54109	39.689	27.965 #
45) L9 AR-1268-5	10.590	8.992	59509	65731	6.002	5.097

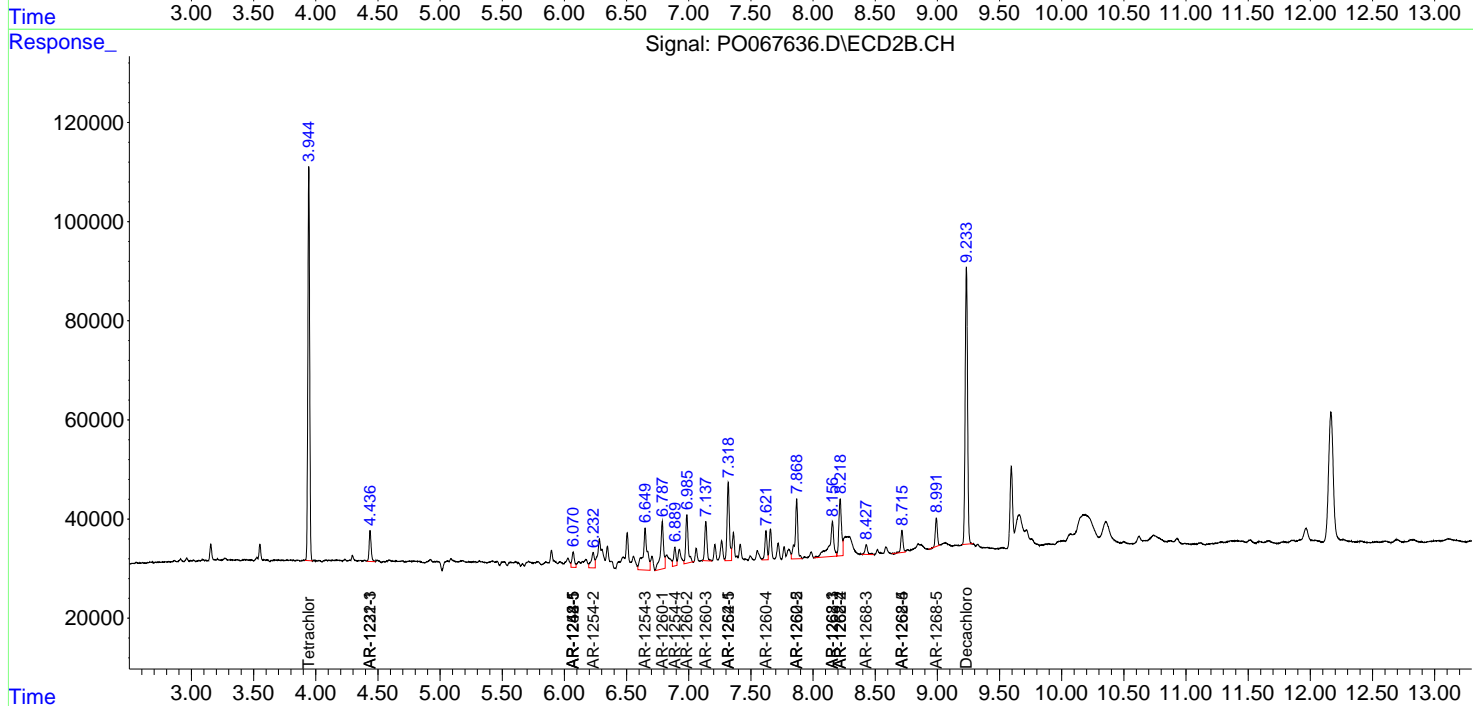
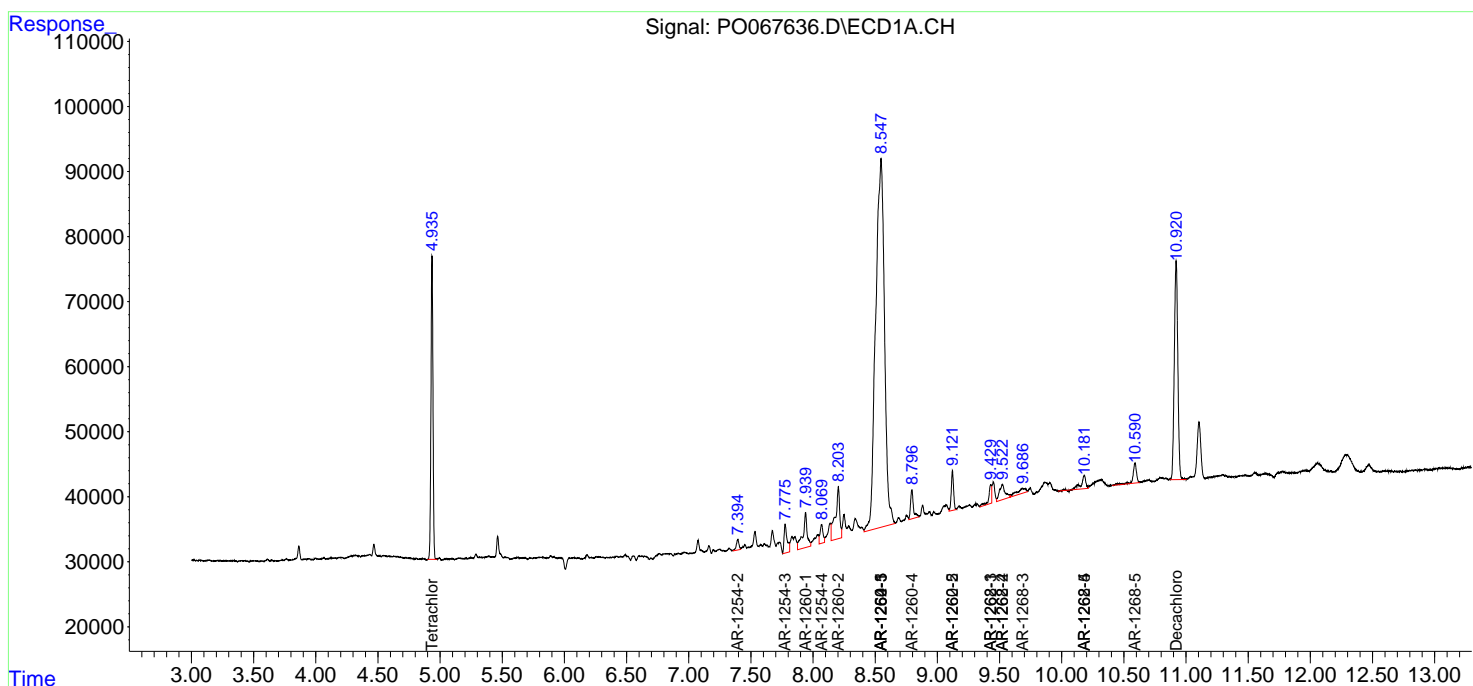
(f)=RT Delta > 1/2 Window (#)=Amounts differ by > 25% (m)=manual int.

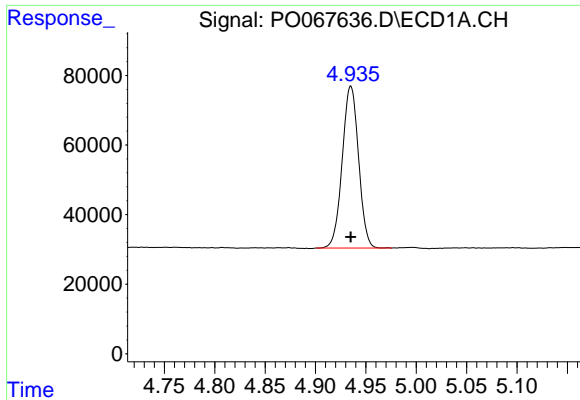
Data Path : Z:\pestpcbsrv\HPCHEM1\ECD_0\Data\P0040220\
 Data File : P0067636.D
 Signal(s) : Signal #1: ECD1A.CH Signal #2: ECD2B.CH
 Acq On : 02 Apr 2020 19:33
 Operator : DD\AJ
 Sample : L2129-06
 Misc :
 ALS Vial : 37 Sample Multiplier: 1

Instrument :
 ECD_D
 ClientSampled :
 TP-8

Integration File signal 1: autoint1.e
 Integration File signal 2: autoint2.e
 Quant Time: Apr 03 03:15:40 2020
 Quant Method : Z:\pestpcbsrv\HPCHEM1\ECD_0\methods\P0040120.M
 Quant Title : GC EXTRACTABLES
 QLast Update : Wed Apr 01 17:26:29 2020
 Response via : Initial Calibration
 Integrator: ChemStation 6890 Scale Mode: Small noise peaks clipped

Volume Inj. : 2 µl
 Signal #1 Phase : ZB-MR1 Signal #2 Phase: ZB-MR2
 Signal #1 Info : 30Mx0.32mmx 0.50µ Signal #2 Info : 30M x 0.32mm x 0.25µm

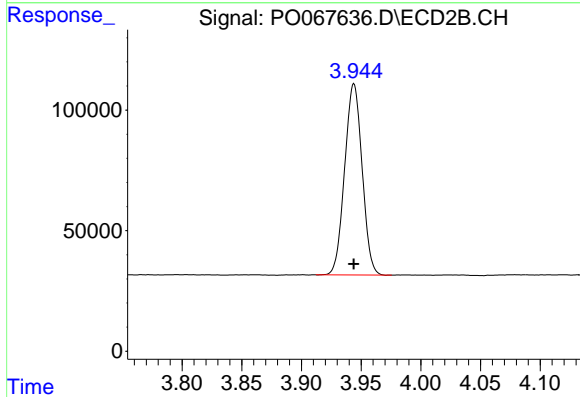




#1 Tetrachloro-m-xylene

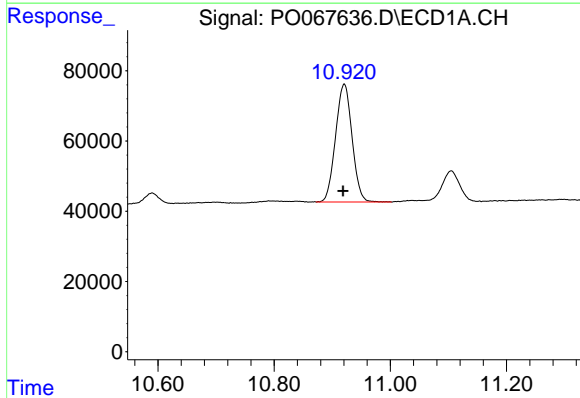
R.T.: 4.935 min
 Delta R.T.: 0.000 min
 Response: 524861
 Conc: 22.04 ng/ml

Instrument :
 ECD_D
 ClientSampled :
 TP-8



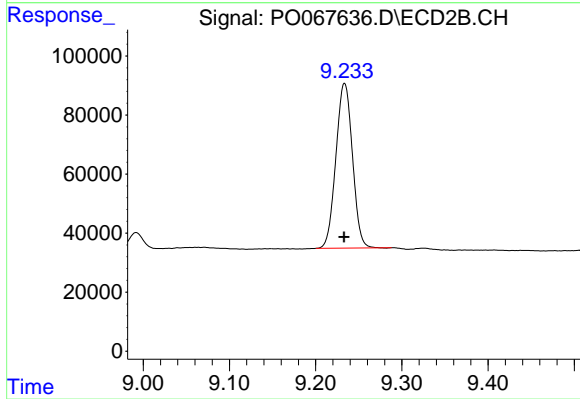
#1 Tetrachloro-m-xylene

R.T.: 3.944 min
 Delta R.T.: 0.000 min
 Response: 807309
 Conc: 24.09 ng/ml



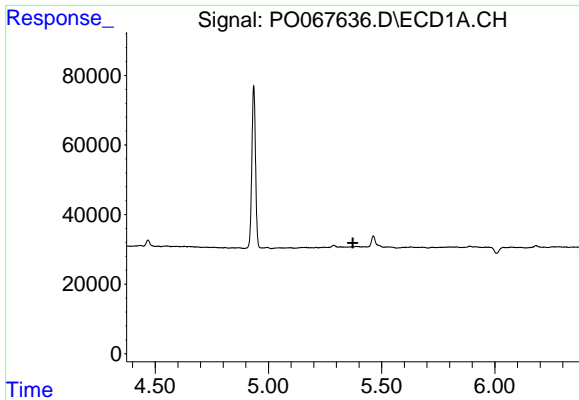
#2 Decachlorobiphenyl

R.T.: 10.921 min
 Delta R.T.: 0.002 min
 Response: 662398
 Conc: 19.46 ng/ml



#2 Decachlorobiphenyl

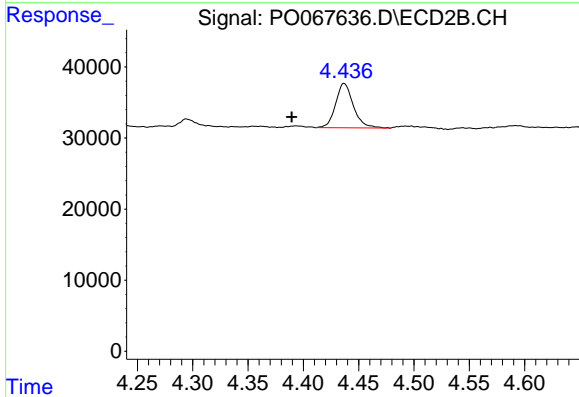
R.T.: 9.234 min
 Delta R.T.: 0.000 min
 Response: 743741
 Conc: 17.99 ng/ml



#10 AR-1221-3

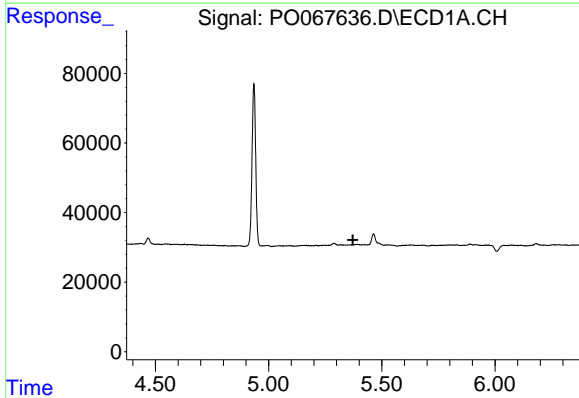
R.T.: 0.000 min
 Exp R.T. : 5.373 min
 Response: 0
 Conc: N.D.

Instrument :
 ECD_D
 ClientSampled :
 TP-8



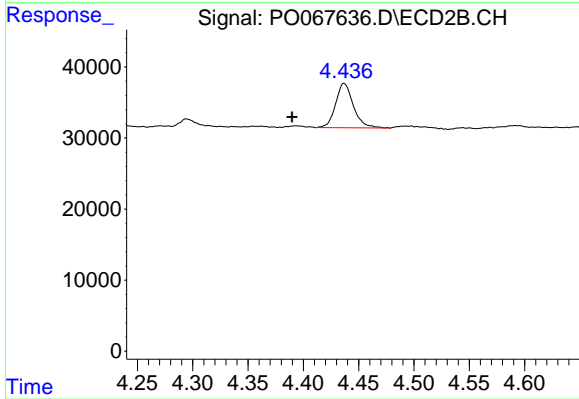
#10 AR-1221-3

R.T.: 4.437 min
 Delta R.T.: 0.048 min
 Response: 69619
 Conc: 70.91 ng/ml



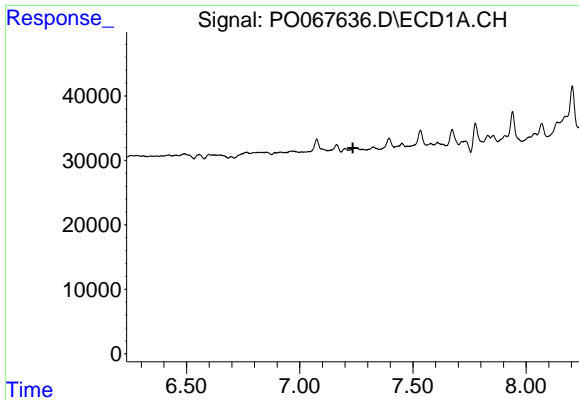
#11 AR-1232-1

R.T.: 0.000 min
 Exp R.T. : 5.372 min
 Response: 0
 Conc: N.D.



#11 AR-1232-1

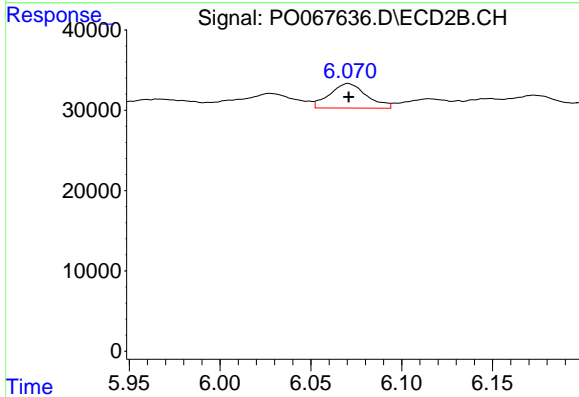
R.T.: 4.437 min
 Delta R.T.: 0.047 min
 Response: 69619
 Conc: 100.60 ng/ml



#20 AR-1242-5

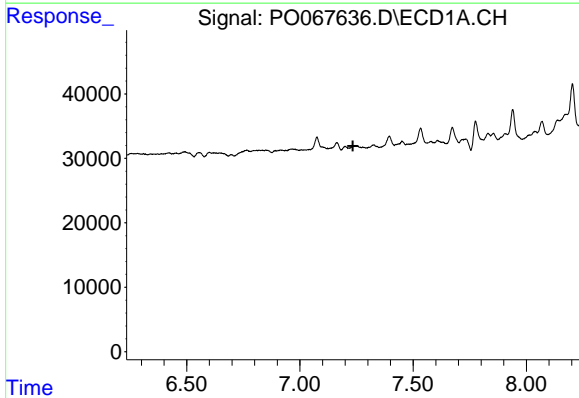
R.T.: 0.000 min
 Exp R.T. : 7.235 min
 Response: 0
 Conc: N.D.

Instrument :
 ECD_D
ClientSampled :
 TP-8



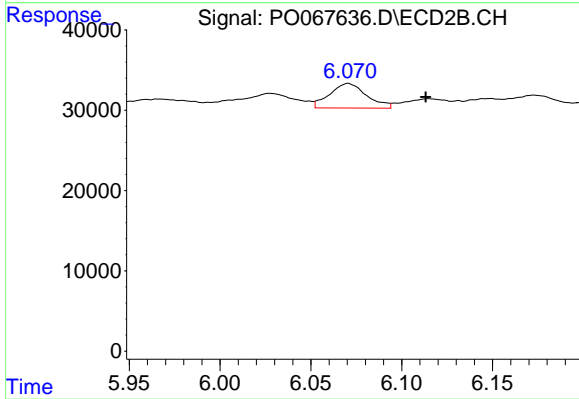
#20 AR-1242-5

R.T.: 6.071 min
 Delta R.T.: 0.000 min
 Response: 43319
 Conc: 46.29 ng/ml



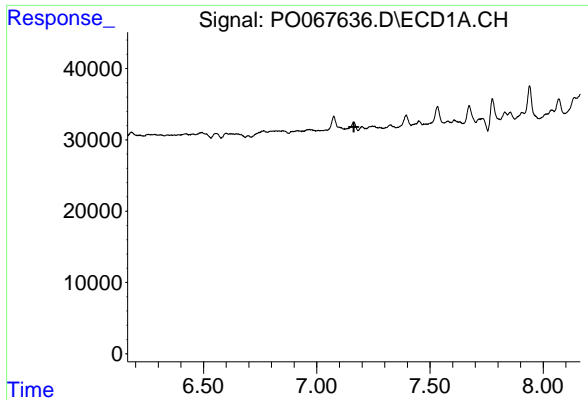
#25 AR-1248-5

R.T.: 0.000 min
 Exp R.T. : 7.234 min
 Response: 0
 Conc: N.D.



#25 AR-1248-5

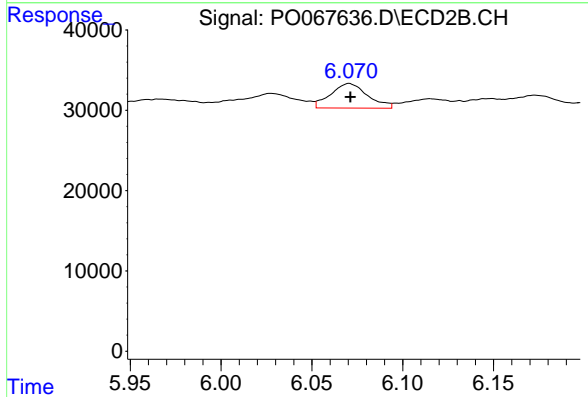
R.T.: 6.071 min
 Delta R.T.: -0.043 min
 Response: 43319
 Conc: 35.01 ng/ml



#26 AR-1254-1

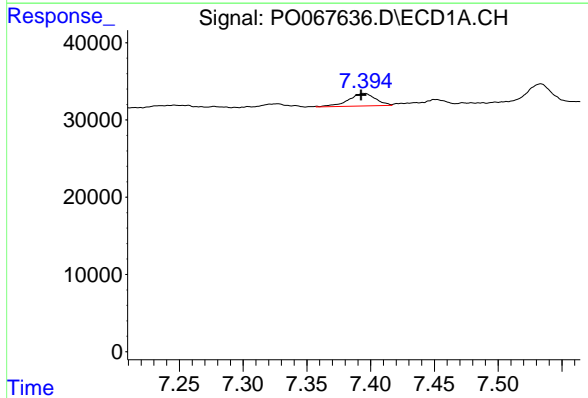
R.T.: 0.000 min
 Exp R.T.: 7.164 min
 Response: 0
 Conc: N.D.

Instrument :
 ECD_D
 ClientSampled :
 TP-8



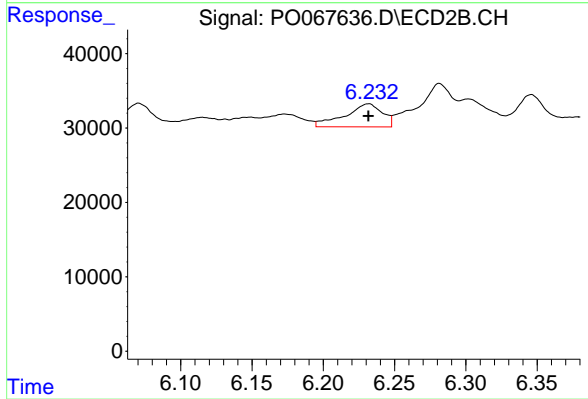
#26 AR-1254-1

R.T.: 6.071 min
 Delta R.T.: 0.000 min
 Response: 43319
 Conc: 22.33 ng/ml



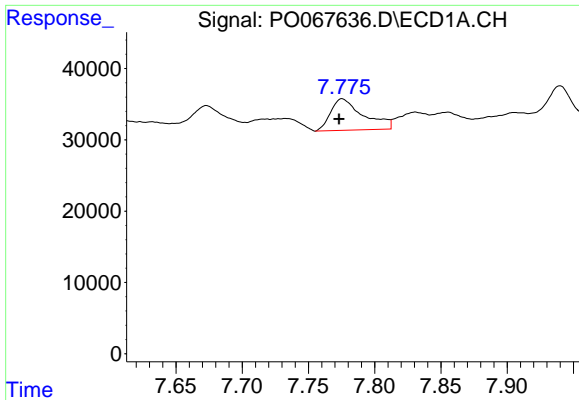
#27 AR-1254-2

R.T.: 7.395 min
 Delta R.T.: 0.002 min
 Response: 24274
 Conc: 15.69 ng/ml



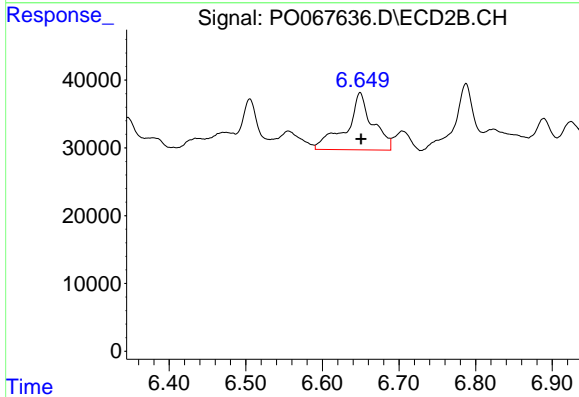
#27 AR-1254-2

R.T.: 6.231 min
 Delta R.T.: 0.000 min
 Response: 56709
 Conc: 32.55 ng/ml

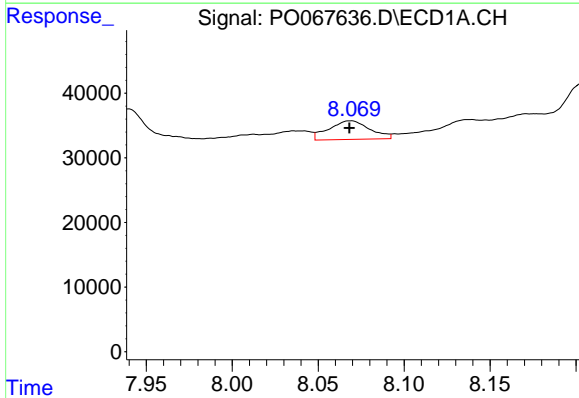


#28 AR-1254-3
 R.T.: 7.775 min
 Delta R.T.: 0.002 min
 Response: 75569
 Conc: 46.22 ng/ml

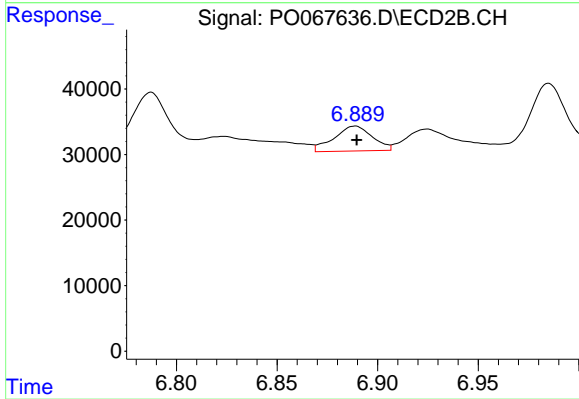
Instrument :
 ECD_D
 ClientSampled :
 TP-8



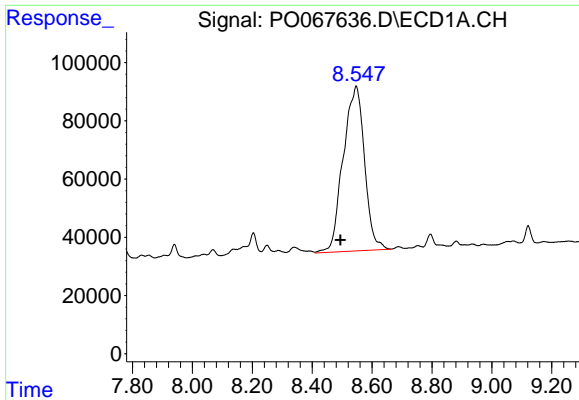
#28 AR-1254-3
 R.T.: 6.649 min
 Delta R.T.: -0.001 min
 Response: 201276
 Conc: 72.65 ng/ml



#29 AR-1254-4
 R.T.: 8.069 min
 Delta R.T.: 0.000 min
 Response: 47776
 Conc: 37.28 ng/ml



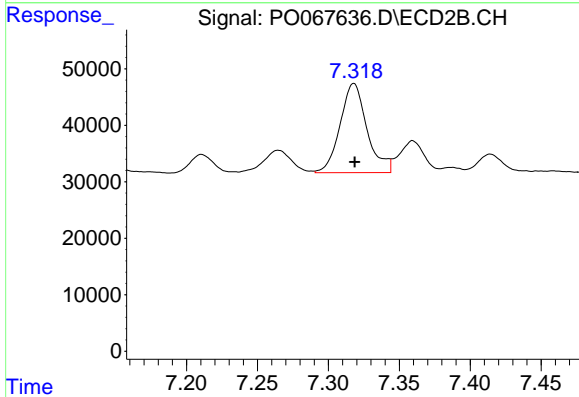
#29 AR-1254-4
 R.T.: 6.889 min
 Delta R.T.: 0.000 min
 Response: 50296
 Conc: 27.52 ng/ml



#30 AR-1254-5

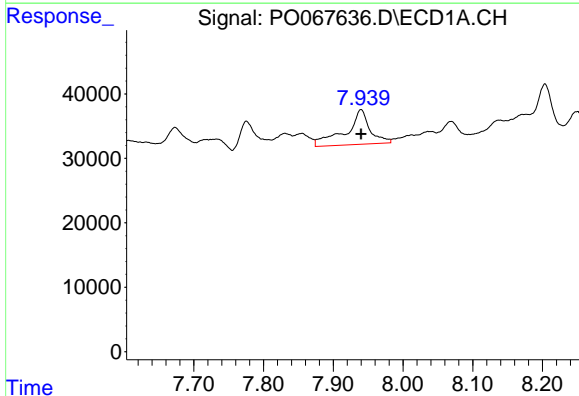
R.T.: 8.547 min
 Delta R.T.: 0.052 min
 Response: 2796667
 Conc: 2032.87 ng/ml

Instrument :
 ECD_D
 ClientSampleId :
 TP-8



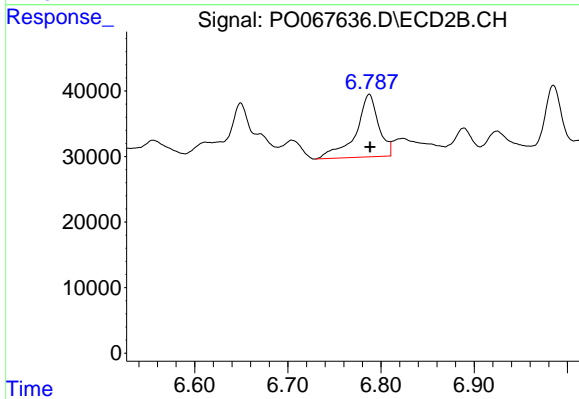
#30 AR-1254-5

R.T.: 7.318 min
 Delta R.T.: 0.000 min
 Response: 208753
 Conc: 81.93 ng/ml



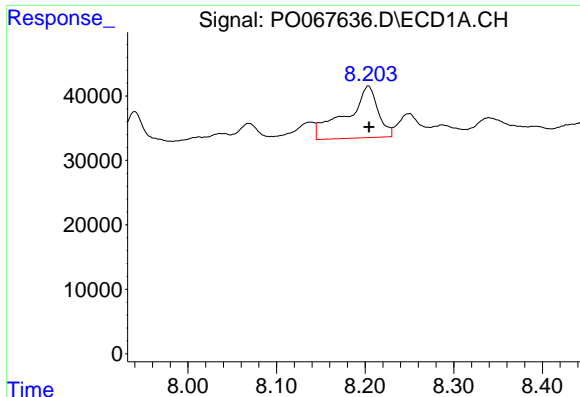
#31 AR-1260-1

R.T.: 7.940 min
 Delta R.T.: 0.000 min
 Response: 129673
 Conc: 95.95 ng/ml



#31 AR-1260-1

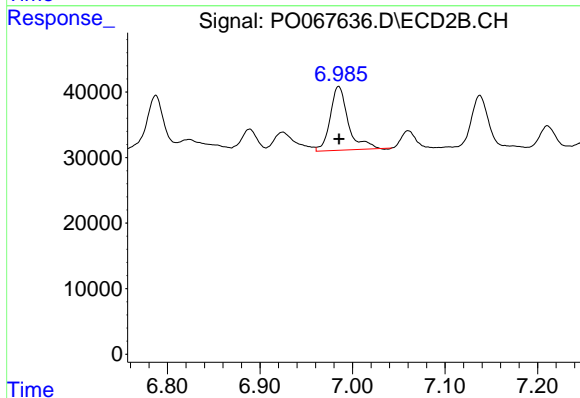
R.T.: 6.787 min
 Delta R.T.: 0.000 min
 Response: 163206
 Conc: 77.85 ng/ml



#32 AR-1260-2

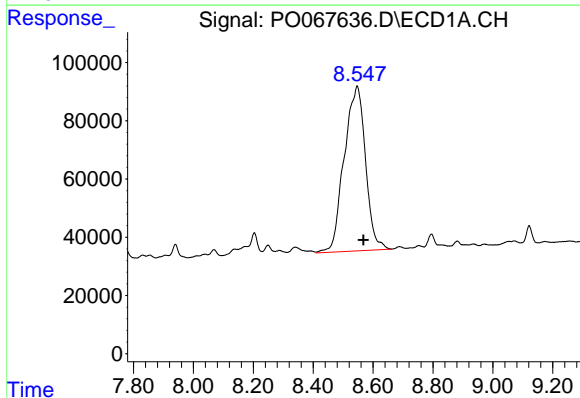
R.T.: 8.204 min
Delta R.T.: 0.000 min
Response: 199708
Conc: 118.30 ng/ml

Instrument :
ECD_D
ClientSampleId :
TP-8



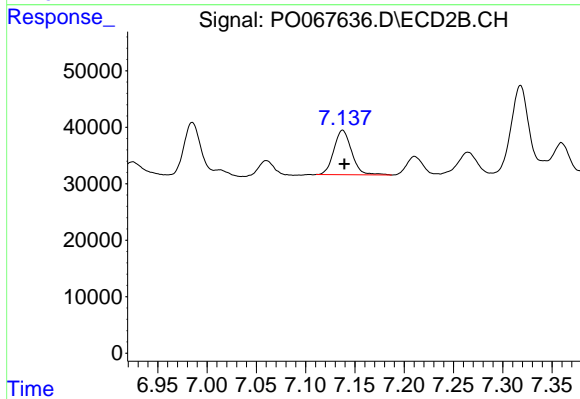
#32 AR-1260-2

R.T.: 6.985 min
Delta R.T.: 0.000 min
Response: 131927
Conc: 51.38 ng/ml



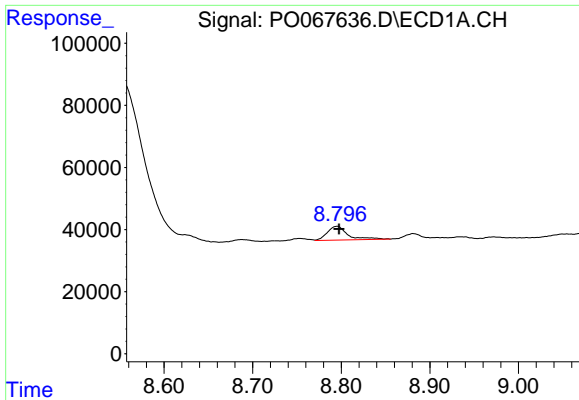
#33 AR-1260-3

R.T.: 8.547 min
Delta R.T.: -0.021 min
Response: 2796667
Conc: 2145.53 ng/ml



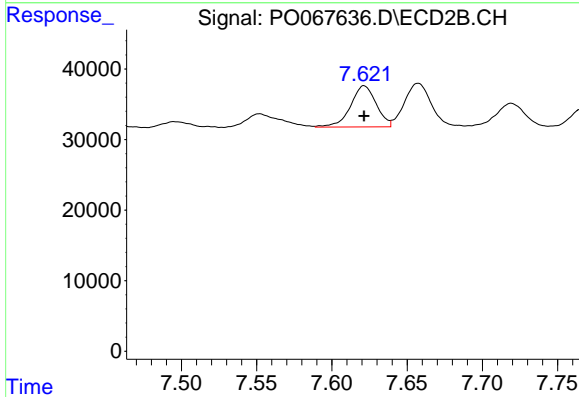
#33 AR-1260-3

R.T.: 7.138 min
Delta R.T.: -0.002 min
Response: 99053
Conc: 41.19 ng/ml

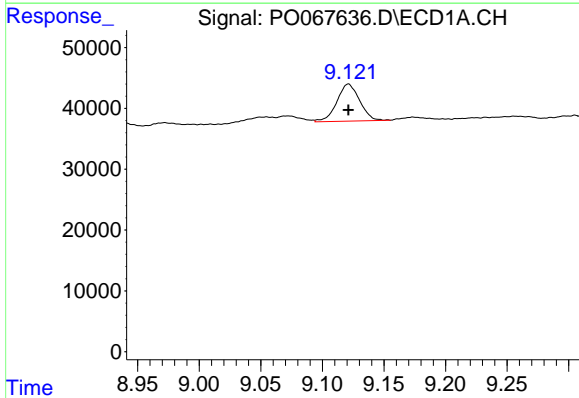


#34 AR-1260-4
 R.T.: 8.795 min
 Delta R.T.: -0.002 min
 Response: 71257
 Conc: 46.37 ng/ml

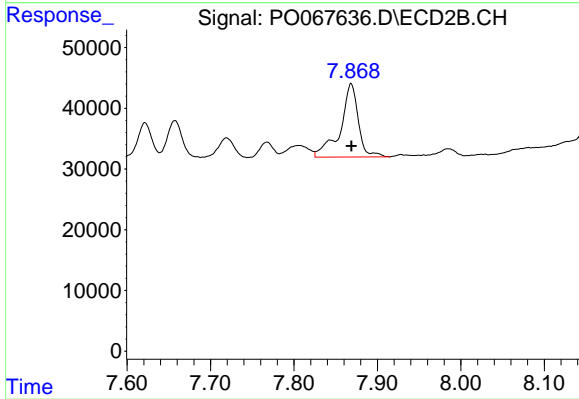
Instrument :
 ECD_D
 ClientSampleId :
 TP-8



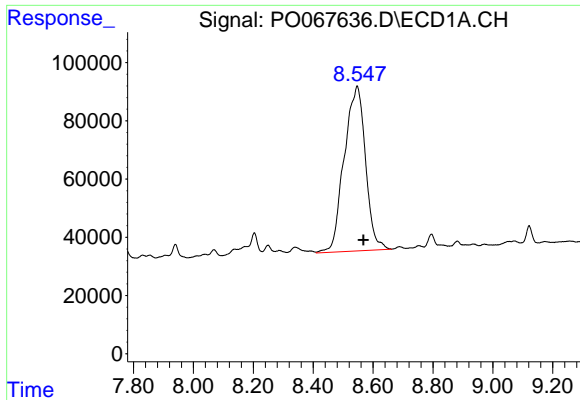
#34 AR-1260-4
 R.T.: 7.622 min
 Delta R.T.: 0.000 min
 Response: 69218
 Conc: 32.93 ng/ml



#35 AR-1260-5
 R.T.: 9.121 min
 Delta R.T.: 0.000 min
 Response: 78522
 Conc: 24.89 ng/ml



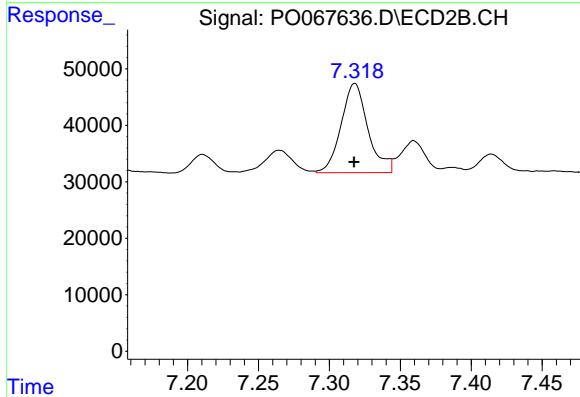
#35 AR-1260-5
 R.T.: 7.869 min
 Delta R.T.: 0.000 min
 Response: 180321
 Conc: 35.62 ng/ml



#36 AR-1262-1

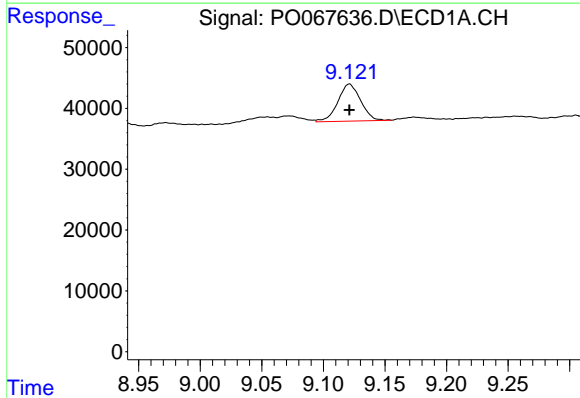
R.T.: 8.547 min
 Delta R.T.: -0.021 min
 Response: 2796667
 Conc: 1668.19 ng/ml

Instrument :
 ECD_D
 ClientSampled :
 TP-8



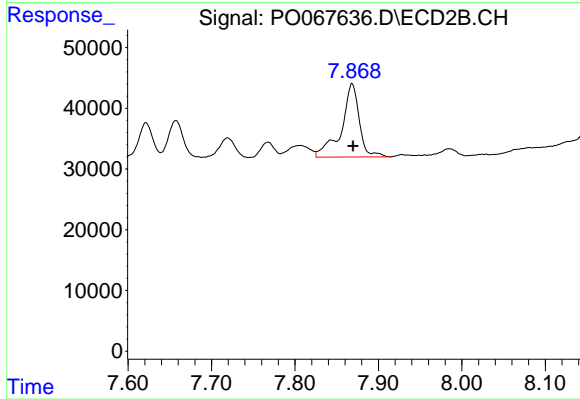
#36 AR-1262-1

R.T.: 7.318 min
 Delta R.T.: 0.000 min
 Response: 208753
 Conc: 150.65 ng/ml



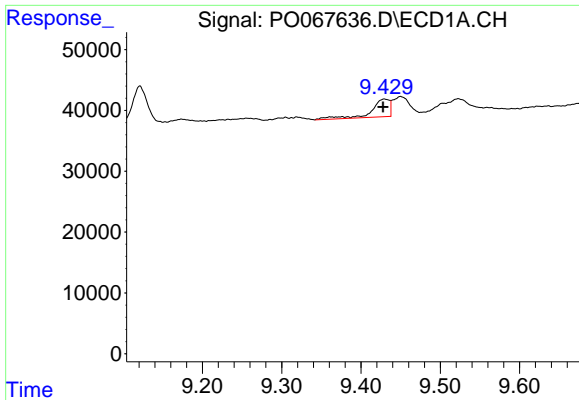
#37 AR-1262-2

R.T.: 9.121 min
 Delta R.T.: 0.000 min
 Response: 78522
 Conc: 27.36 ng/ml



#37 AR-1262-2

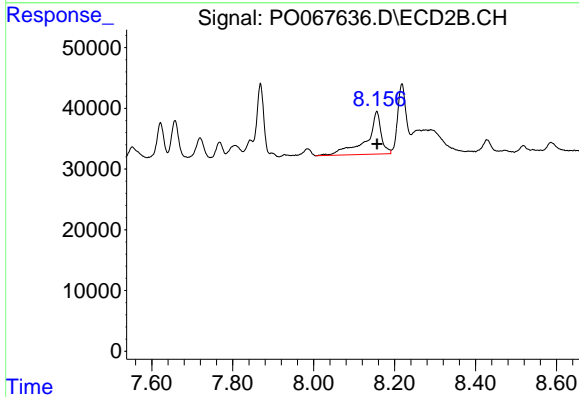
R.T.: 7.869 min
 Delta R.T.: 0.000 min
 Response: 180321
 Conc: 39.44 ng/ml



#38 AR-1262-3

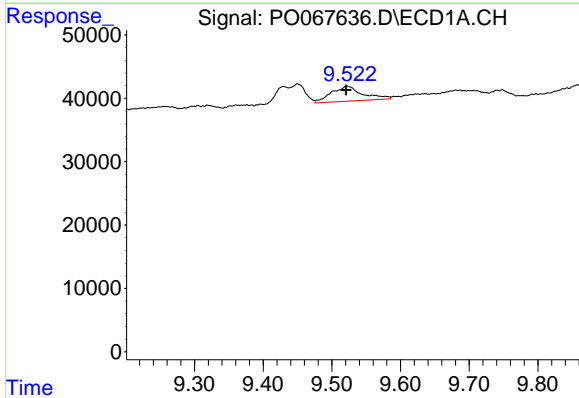
R.T.: 9.430 min
 Delta R.T.: 0.002 min
 Response: 46335
 Conc: 22.27 ng/ml

Instrument :
 ECD_D
 ClientSampled :
 TP-8



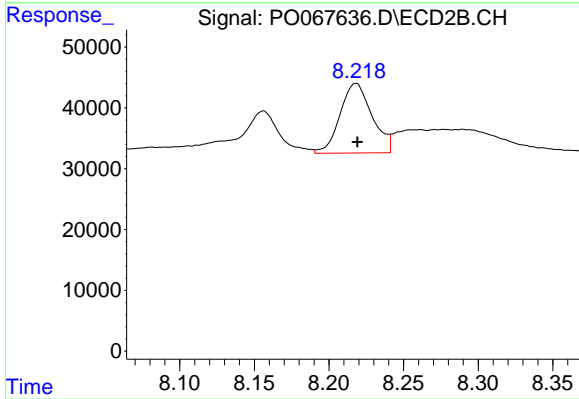
#38 AR-1262-3

R.T.: 8.156 min
 Delta R.T.: 0.000 min
 Response: 179313
 Conc: 91.23 ng/ml



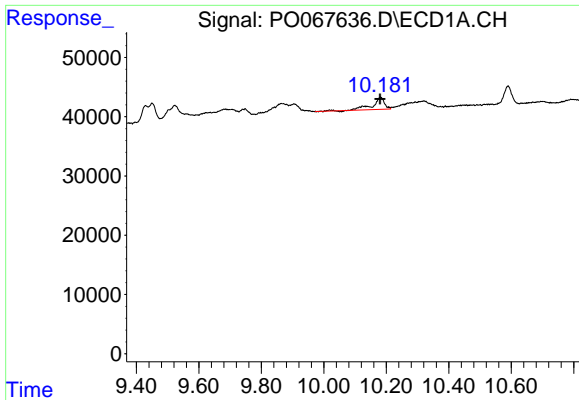
#39 AR-1262-4

R.T.: 9.523 min
 Delta R.T.: 0.002 min
 Response: 74600
 Conc: 47.14 ng/ml



#39 AR-1262-4

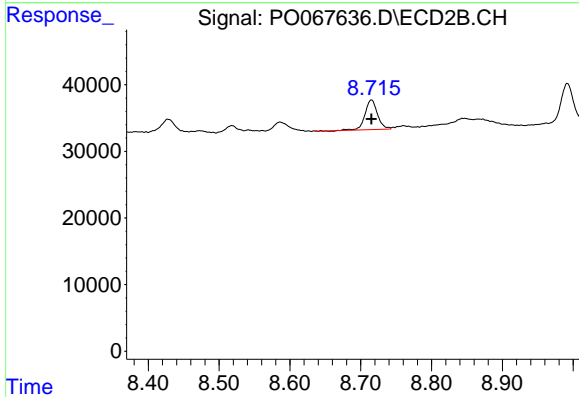
R.T.: 8.218 min
 Delta R.T.: -0.001 min
 Response: 171126
 Conc: 49.92 ng/ml



#40 AR-1262-5

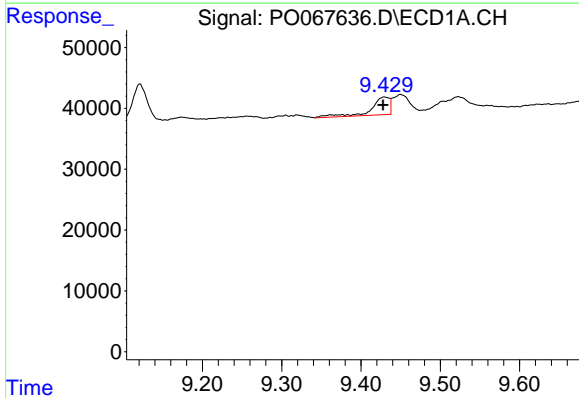
R.T.: 10.182 min
 Delta R.T.: 0.002 min
 Response: 55098
 Conc: 46.73 ng/ml

Instrument :
 ECD_D
 ClientSampled :
 TP-8



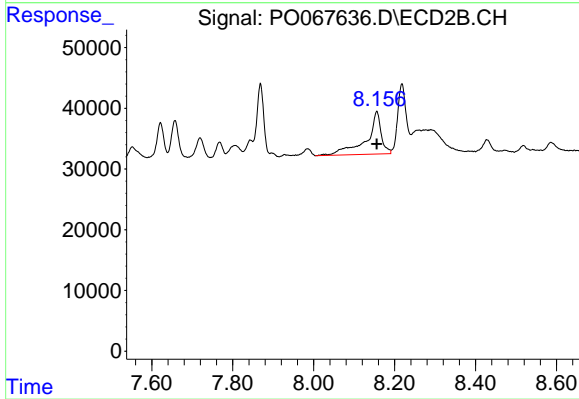
#40 AR-1262-5

R.T.: 8.715 min
 Delta R.T.: 0.000 min
 Response: 54109
 Conc: 31.83 ng/ml



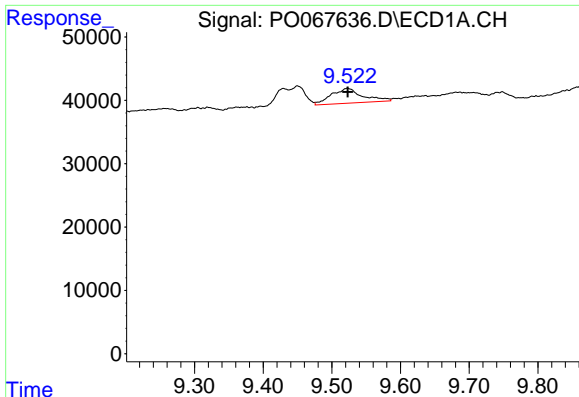
#41 AR-1268-1

R.T.: 9.430 min
 Delta R.T.: 0.002 min
 Response: 46335
 Conc: 12.54 ng/ml



#41 AR-1268-1

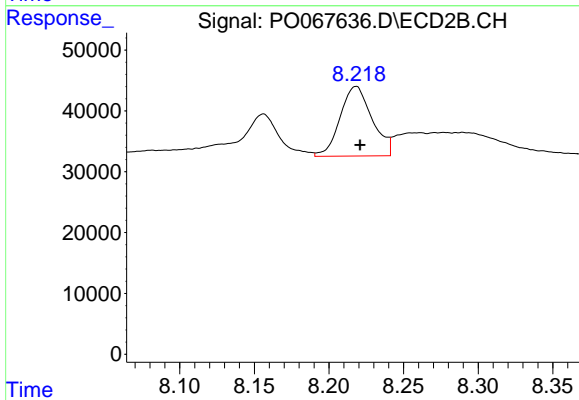
R.T.: 8.156 min
 Delta R.T.: 0.000 min
 Response: 179313
 Conc: 33.33 ng/ml



#42 AR-1268-2

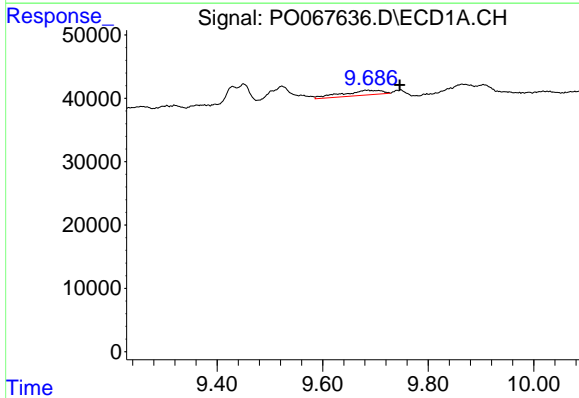
R.T.: 9.523 min
 Delta R.T.: 0.000 min
 Response: 74600
 Conc: 21.52 ng/ml

Instrument :
 ECD_D
 ClientSampleId :
 TP-8



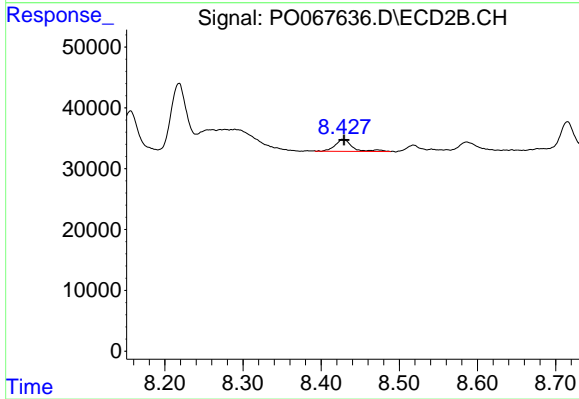
#42 AR-1268-2

R.T.: 8.218 min
 Delta R.T.: -0.003 min
 Response: 171126
 Conc: 34.66 ng/ml



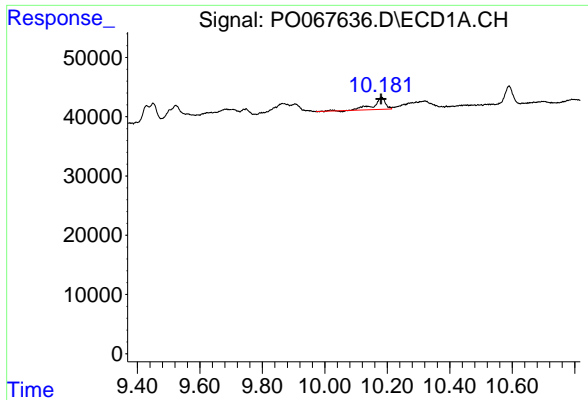
#43 AR-1268-3

R.T.: 9.687 min
 Delta R.T.: -0.060 min
 Response: 40024
 Conc: 13.78 ng/ml



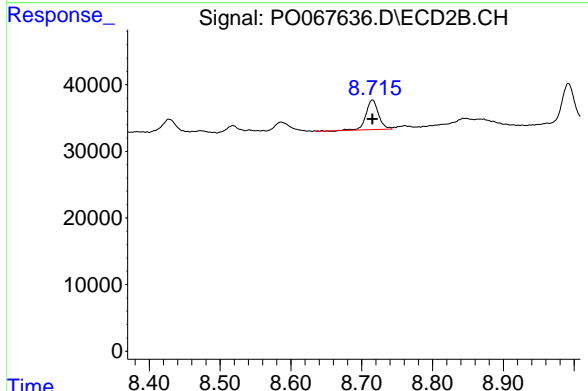
#43 AR-1268-3

R.T.: 8.428 min
 Delta R.T.: -0.001 min
 Response: 29771
 Conc: 7.10 ng/ml

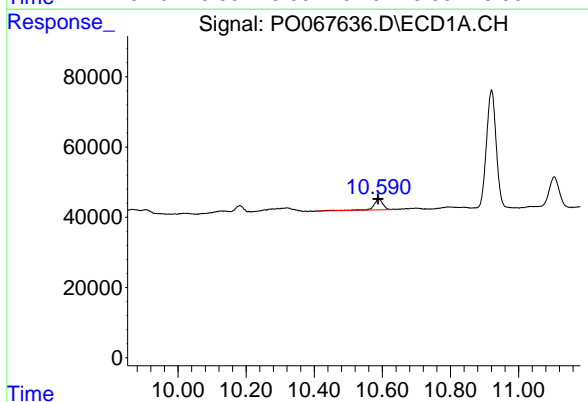


#44 AR-1268-4
 R.T.: 10.182 min
 Delta R.T.: 0.001 min
 Response: 55098
 Conc: 39.69 ng/ml

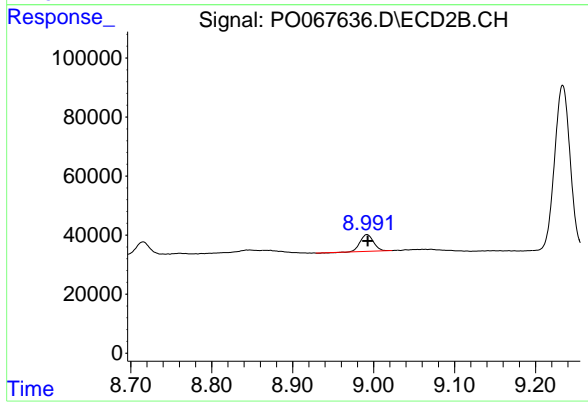
Instrument :
 ECD_D
 ClientSampleId :
 TP-8



#44 AR-1268-4
 R.T.: 8.715 min
 Delta R.T.: 0.000 min
 Response: 54109
 Conc: 27.96 ng/ml



#45 AR-1268-5
 R.T.: 10.590 min
 Delta R.T.: 0.002 min
 Response: 59509
 Conc: 6.00 ng/ml



#45 AR-1268-5
 R.T.: 8.992 min
 Delta R.T.: -0.001 min
 Response: 65731
 Conc: 5.10 ng/ml