

Data Path : Z:\pestpcbsrv\HPCHEM1\ECD_0\Data\P0040220\
 Data File : P0067637.D
 Signal(s) : Signal #1: ECD1A.CH Signal #2: ECD2B.CH
 Acq On : 02 Apr 2020 19:51
 Operator : DD\AJ
 Sample : L2129-11
 Misc :
 ALS Vial : 38 Sample Multiplier: 1

Instrument :
 ECD_D
 ClientSampled :

Integration File signal 1: autoint1.e
 Integration File signal 2: autoint2.e
 Quant Time: Apr 03 03:16:08 2020
 Quant Method : Z:\pestpcbsrv\HPCHEM1\ECD_0\methods\P0040120.M
 Quant Title : GC EXTRACTABLES
 QLast Update : Wed Apr 01 17:26:29 2020
 Response via : Initial Calibration
 Integrator: ChemStation 6890 Scale Mode: Small noise peaks clipped

Volume Inj. : 2 µl
 Signal #1 Phase : ZB-MR1 Signal #2 Phase: ZB-MR2
 Signal #1 Info : 30Mx0.32mmx 0.50µ Signal #2 Info : 30M x 0.32mm x 0.25µm

Compound	RT#1	RT#2	Resp#1	Resp#2	ng/ml	ng/ml
System Monitoring Compounds						
1) SA Tetrachlo...	4.936	3.944	587528	856367	24.671	25.550
2) SA Decachlor...	10.921	9.232	686633	726637	20.169	17.575
Target Compounds						
3) L1 AR-1016-1	6.278	0.000	42006	0	40.734	N.D. #
4) L1 AR-1016-2	6.278	0.000	42006	0	29.772	N.D. #
5) L1 AR-1016-3	6.278	0.000	42006	0	47.790	N.D. #
6) L1 AR-1016-4	0.000	5.511	0	36191	N.D.	40.569 #
7) L1 AR-1016-5	0.000	5.714	0	18146	N.D.	16.036 #
8) L2 AR-1221-1	5.154	4.194	42245	31849	136.451	71.673 #
9) L2 AR-1221-2	5.291	0.000	8105	0	34.845	N.D. #
10) L2 AR-1221-3	0.000	4.437	0	131480	N.D.	133.925 #
11) L3 AR-1232-1	0.000	4.437	0	131480	N.D.	189.982 #
13) L3 AR-1232-3	6.278	0.000	42006	0	80.138	N.D. #
14) L3 AR-1232-4	0.000	5.511	0	36191	N.D.	102.302 #
15) L3 AR-1232-5	6.556	5.714	30722	18146	164.016	47.487 #
16) L4 AR-1242-1	6.278	0.000	42006	0	61.184	N.D. #
17) L4 AR-1242-2	6.278	0.000	42006	0	44.708	N.D. #
18) L4 AR-1242-3	6.278	0.000	42006	0	71.680	N.D. #
19) L4 AR-1242-4	0.000	5.511	0	36191	N.D.	50.279 #
20) L4 AR-1242-5	7.252	6.071	61439	70330	115.007	75.159 #
21) L5 AR-1248-1	6.278	0.000	42006	0	78.295	N.D. #
22) L5 AR-1248-2	6.556	5.511	30722	36191	43.665	35.967
23) L5 AR-1248-3	0.000	5.511	0	36191	N.D.	35.383 #
24) L5 AR-1248-4	7.163	5.714	48687	18146	51.605	14.561 #
25) L5 AR-1248-5	7.252	6.071	61439	70330	68.175	56.833
26) L6 AR-1254-1	7.163	6.071	48687	70330	49.625	36.258 #
27) L6 AR-1254-2	7.394	6.232	127727	98642	82.563	56.622 #
28) L6 AR-1254-3	7.774	6.650	187483	370700	114.674	133.812
29) L6 AR-1254-4	8.069	6.889	114801	100625	89.572	55.062 #
30) L6 AR-1254-5	8.496	7.318	610361	633348	443.666	248.581 #
31) L7 AR-1260-1	7.940	6.788	309645	347278	229.124	165.652 #
32) L7 AR-1260-2	8.204	6.986	254209	340640	150.582	132.661
33) L7 AR-1260-3	8.562	7.138	478613	249496	367.180	103.755 #
34) L7 AR-1260-4	8.793	7.622	387113	177874	251.895	84.633 #
35) L7 AR-1260-5	9.122	7.868	460845	525561	146.086	103.814 #
36) L8 AR-1262-1	8.562	7.318	478613	633348	285.490	457.052 #
37) L8 AR-1262-2	9.122	7.868	460845	525561	160.603	114.950 #
38) L8 AR-1262-3	9.451	8.156	233608	111645	112.266	56.803 #
39) L8 AR-1262-4	9.522	8.216	92336	356827	58.353	104.093 #
40) L8 AR-1262-5	10.181	8.715	77499	103068	65.728	60.634
41) L9 AR-1268-1	9.451	8.156	233608	111645	63.220	20.749 #
42) L9 AR-1268-2	9.522	8.216	92336	356827	26.641	72.269 #

Data Path : Z:\pestpcbsrv\HPCHEM1\ECD_0\Data\P0040220\
 Data File : P0067637.D
 Signal(s) : Signal #1: ECD1A.CH Signal #2: ECD2B.CH
 Acq On : 02 Apr 2020 19:51
 Operator : DD\AJ
 Sample : L2129-11
 Misc :
 ALS Vial : 38 Sample Multiplier: 1

Instrument :
 ECD_D
 ClientSampleId :

Integration File signal 1: autoint1.e
 Integration File signal 2: autoint2.e
 Quant Time: Apr 03 03:16:08 2020
 Quant Method : Z:\pestpcbsrv\HPCHEM1\ECD_0\methods\P0040120.M
 Quant Title : GC EXTRACTABLES
 QLast Update : Wed Apr 01 17:26:29 2020
 Response via : Initial Calibration
 Integrator: ChemStation 6890 Scale Mode: Small noise peaks clipped

Volume Inj. : 2 µl
 Signal #1 Phase : ZB-MR1 Signal #2 Phase: ZB-MR2
 Signal #1 Info : 30Mx0.32mmx 0.50µ Signal #2 Info : 30M x 0.32mm x 0.25µm

	Compound	RT#1	RT#2	Resp#1	Resp#2	ng/ml	ng/ml
43)	L9 AR-1268-3	0.000	8.425	0	36143	N.D.	8.623 #
44)	L9 AR-1268-4	10.181	8.715	77499	103068	55.826	53.268
45)	L9 AR-1268-5	10.591	8.992	81727	98684	8.243	7.652

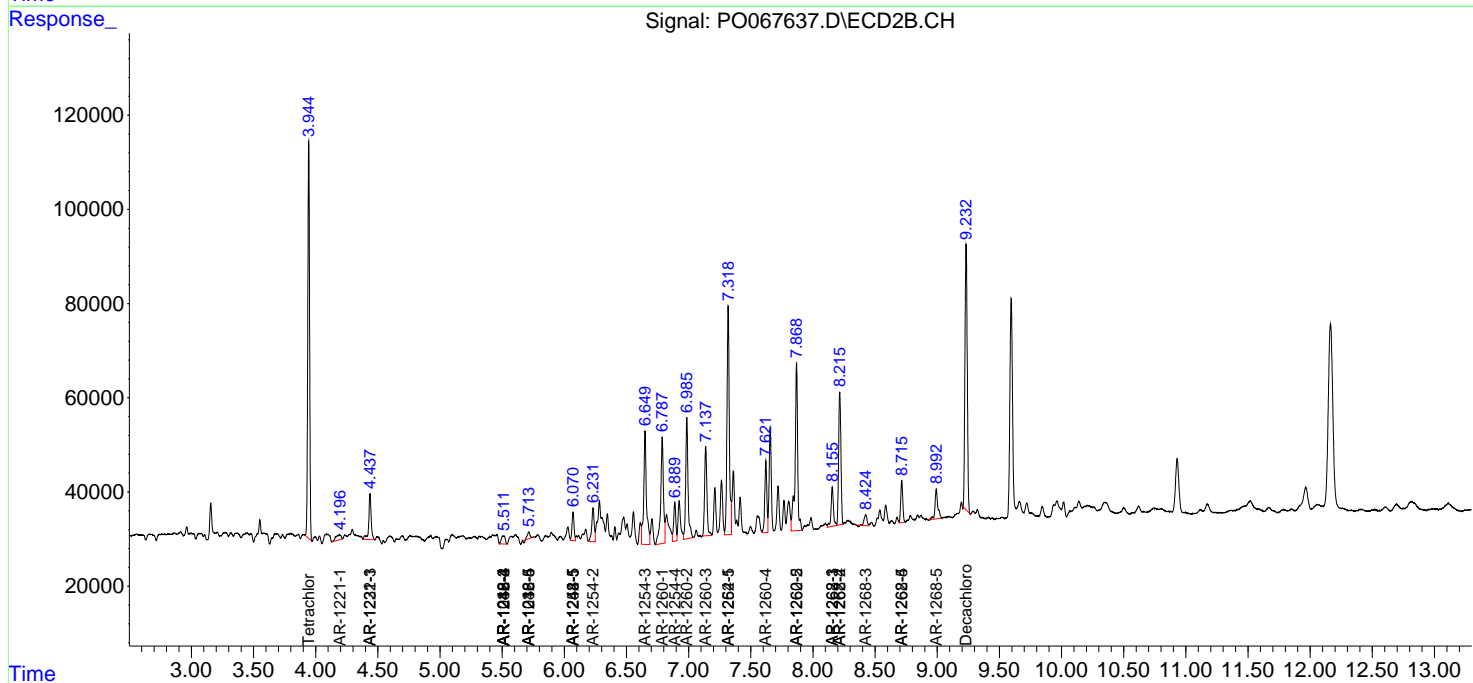
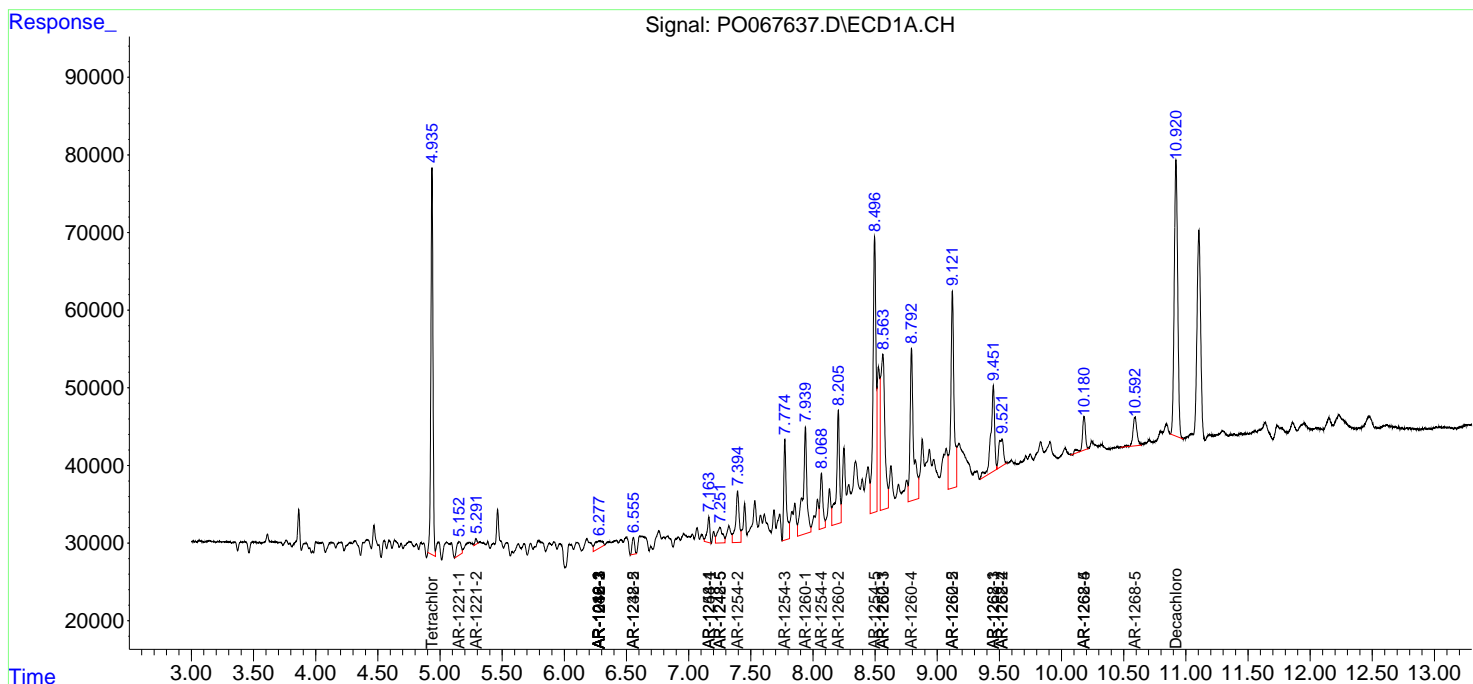
(f)=RT Delta > 1/2 Window (#)=Amounts differ by > 25% (m)=manual int.

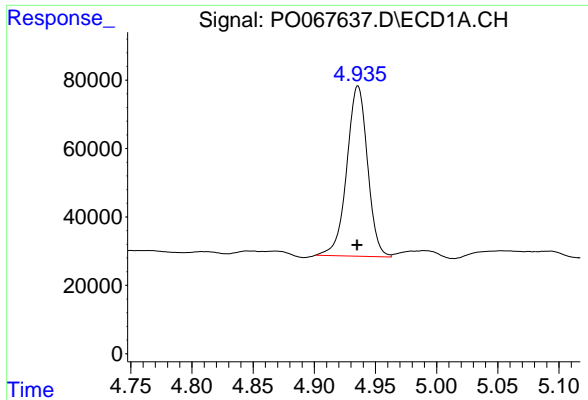
Data Path : Z:\pestpcbsrv\HPCHEM1\ECD_0\Data\PO040220\
 Data File : PO067637.D
 Signal(s) : Signal #1: ECD1A.CH Signal #2: ECD2B.CH
 Acq On : 02 Apr 2020 19:51
 Operator : DD\AJ
 Sample : L2129-11
 Misc :
 ALS Vial : 38 Sample Multiplier: 1

Instrument :
 ECD_D
 ClientSampled :

Integration File signal 1: autoint1.e
 Integration File signal 2: autoint2.e
 Quant Time: Apr 03 03:16:08 2020
 Quant Method : Z:\pestpcbsrv\HPCHEM1\ECD_0\methods\PO040120.M
 Quant Title : GC EXTRACTABLES
 QLast Update : Wed Apr 01 17:26:29 2020
 Response via : Initial Calibration
 Integrator: ChemStation 6890 Scale Mode: Small noise peaks clipped

Volume Inj. : 2 µl
 Signal #1 Phase : ZB-MR1 Signal #2 Phase: ZB-MR2
 Signal #1 Info : 30Mx0.32mmx 0.50µ Signal #2 Info : 30M x 0.32mm x 0.25µm





#1 Tetrachloro-m-xylene

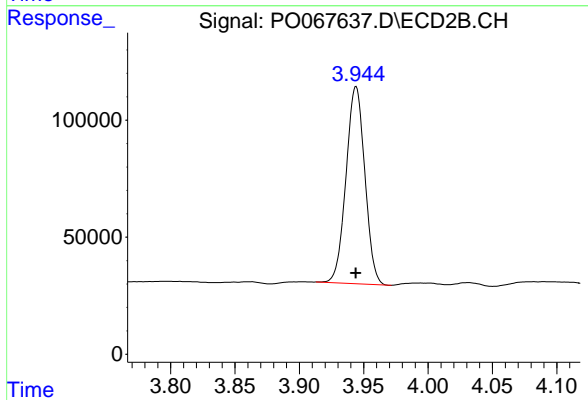
R.T.: 4.936 min

Delta R.T.: 0.000 min

Response: 587528

Conc: 24.67 ng/ml

Instrument :
ECD_D
ClientSampleId :



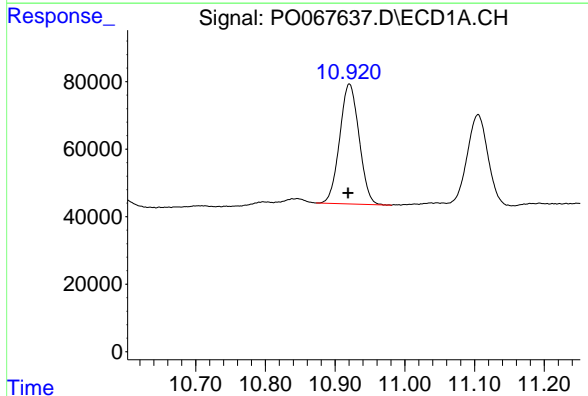
#1 Tetrachloro-m-xylene

R.T.: 3.944 min

Delta R.T.: 0.000 min

Response: 856367

Conc: 25.55 ng/ml



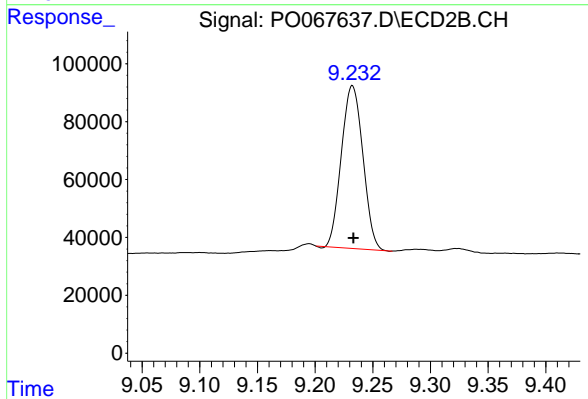
#2 Decachlorobiphenyl

R.T.: 10.921 min

Delta R.T.: 0.002 min

Response: 686633

Conc: 20.17 ng/ml



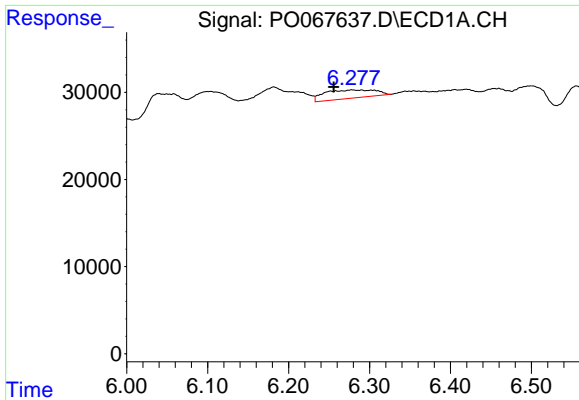
#2 Decachlorobiphenyl

R.T.: 9.232 min

Delta R.T.: 0.000 min

Response: 726637

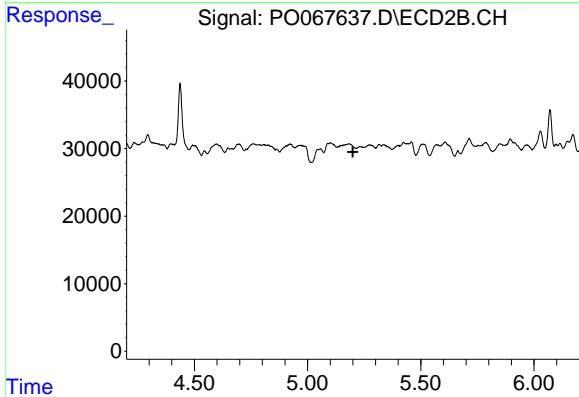
Conc: 17.57 ng/ml



#3 AR-1016-1

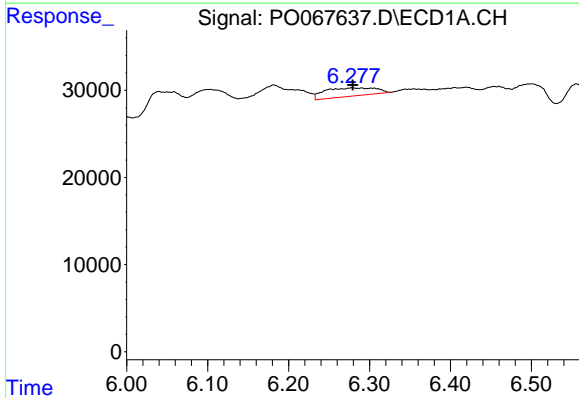
R.T.: 6.278 min
 Delta R.T.: 0.023 min
 Response: 42006
 Conc: 40.73 ng/ml

Instrument :
 ECD_D
 ClientSampled :



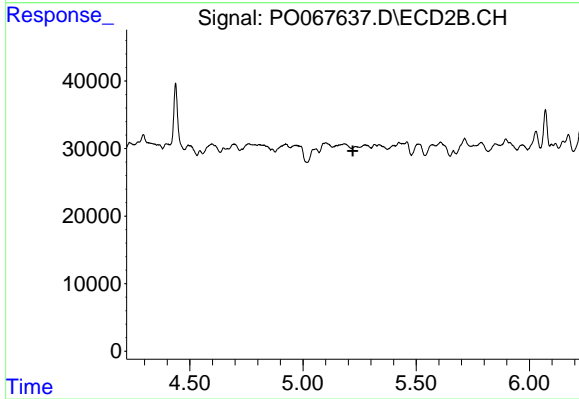
#3 AR-1016-1

R.T.: 0.000 min
 Exp R.T. : 5.200 min
 Response: 0
 Conc: N.D.



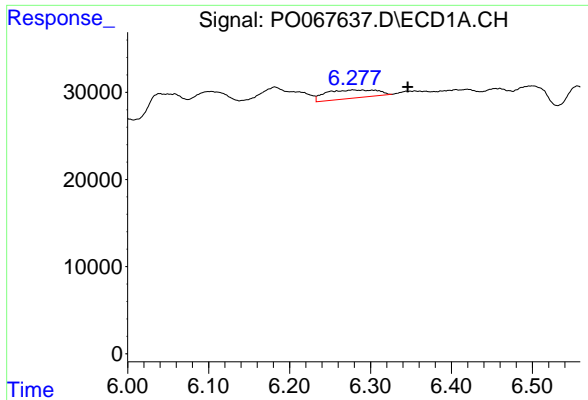
#4 AR-1016-2

R.T.: 6.278 min
 Delta R.T.: 0.000 min
 Response: 42006
 Conc: 29.77 ng/ml



#4 AR-1016-2

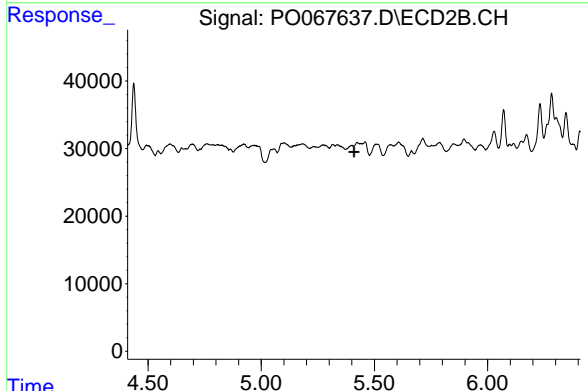
R.T.: 0.000 min
 Exp R.T. : 5.220 min
 Response: 0
 Conc: N.D.



#5 AR-1016-3

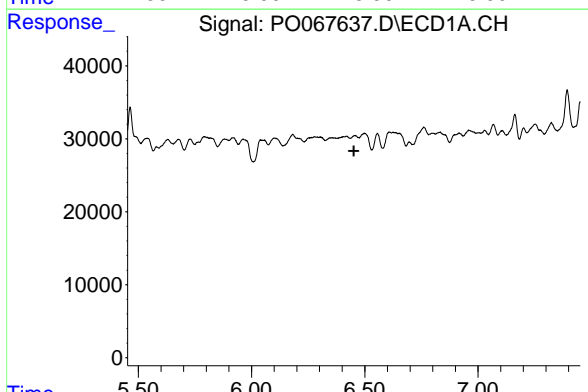
R.T.: 6.278 min
 Delta R.T.: -0.068 min
 Response: 42006
 Conc: 47.79 ng/ml

Instrument :
 ECD_D
 ClientSampled :



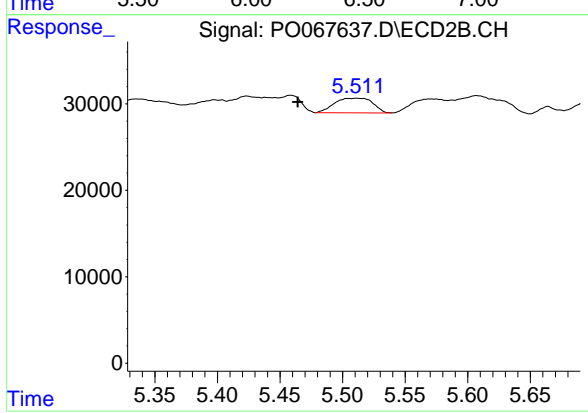
#5 AR-1016-3

R.T.: 0.000 min
 Exp R.T. : 5.410 min
 Response: 0
 Conc: N.D.



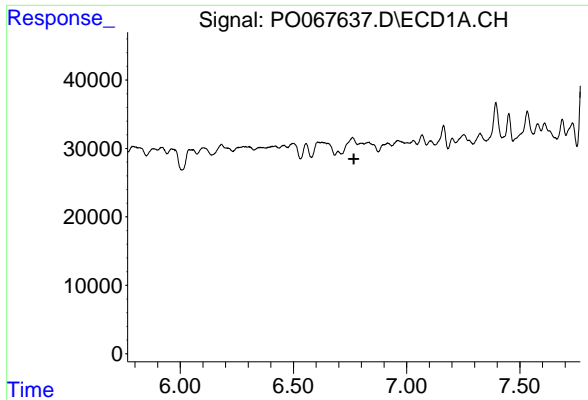
#6 AR-1016-4

R.T.: 0.000 min
 Exp R.T. : 6.452 min
 Response: 0
 Conc: N.D.



#6 AR-1016-4

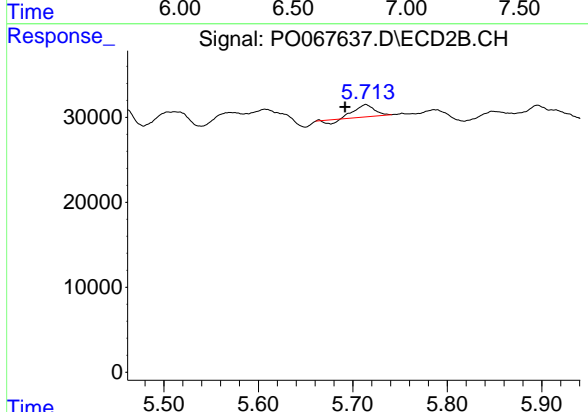
R.T.: 5.511 min
 Delta R.T.: 0.047 min
 Response: 36191
 Conc: 40.57 ng/ml



#7 AR-1016-5

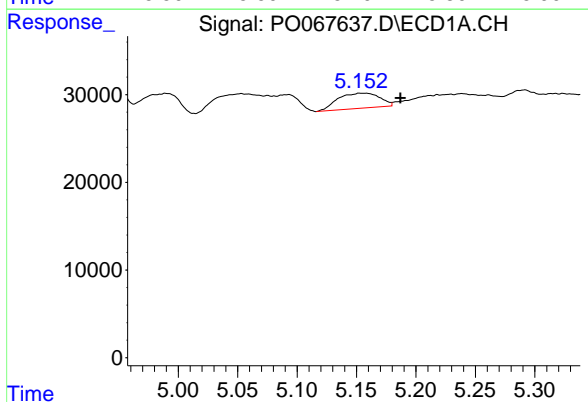
R.T.: 0.000 min
 Exp R.T.: 6.767 min
 Response: 0
 Conc: N.D.

Instrument :
 ECD_D
 ClientSampleId :



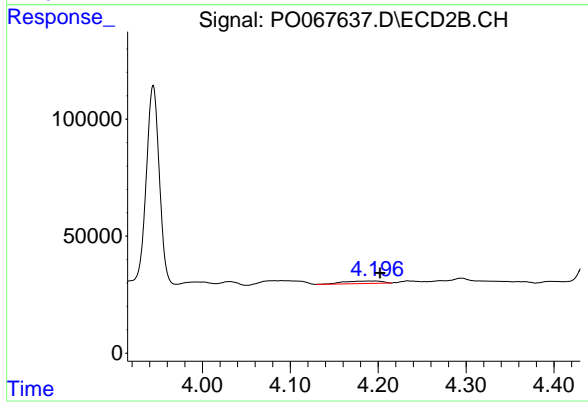
#7 AR-1016-5

R.T.: 5.714 min
 Delta R.T.: 0.022 min
 Response: 18146
 Conc: 16.04 ng/ml



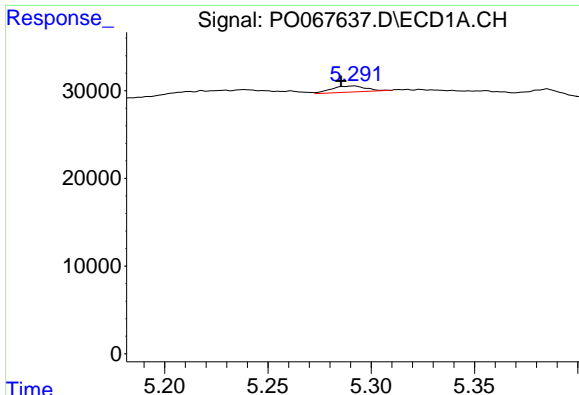
#8 AR-1221-1

R.T.: 5.154 min
 Delta R.T.: -0.033 min
 Response: 42245
 Conc: 136.45 ng/ml



#8 AR-1221-1

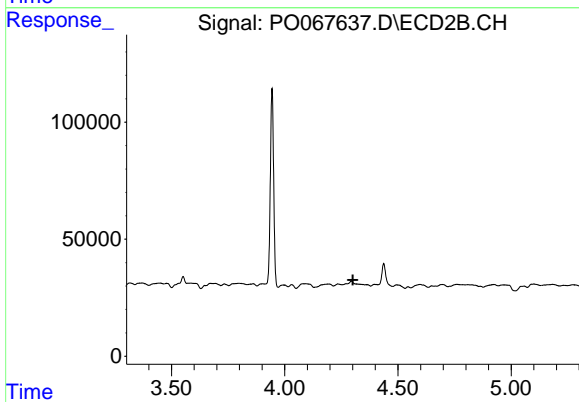
R.T.: 4.194 min
 Delta R.T.: -0.009 min
 Response: 31849
 Conc: 71.67 ng/ml



#9 AR-1221-2

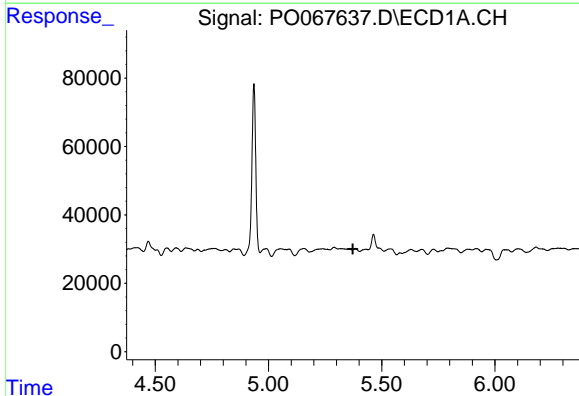
R.T.: 5.291 min
 Delta R.T.: 0.006 min
 Response: 8105
 Conc: 34.85 ng/ml

Instrument :
 ECD_D
 ClientSampled :



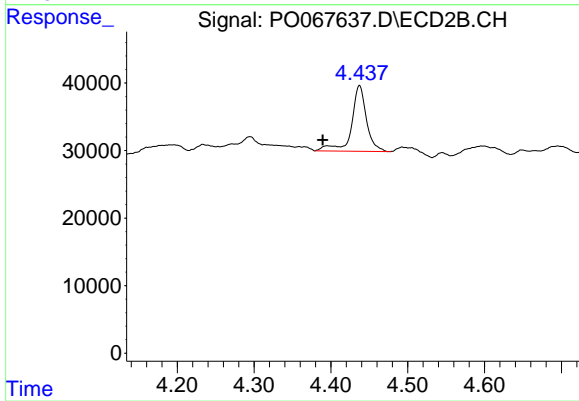
#9 AR-1221-2

R.T.: 0.000 min
 Exp R.T. : 4.301 min
 Response: 0
 Conc: N.D.



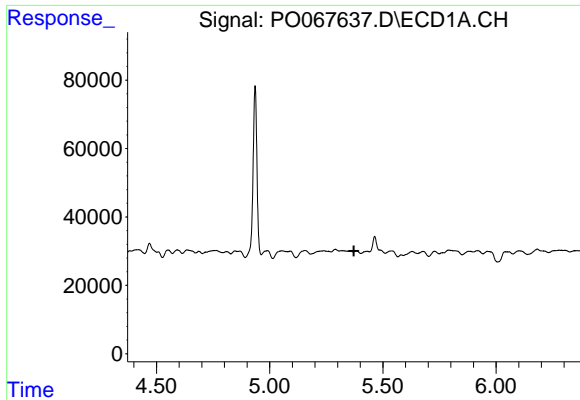
#10 AR-1221-3

R.T.: 0.000 min
 Exp R.T. : 5.373 min
 Response: 0
 Conc: N.D.



#10 AR-1221-3

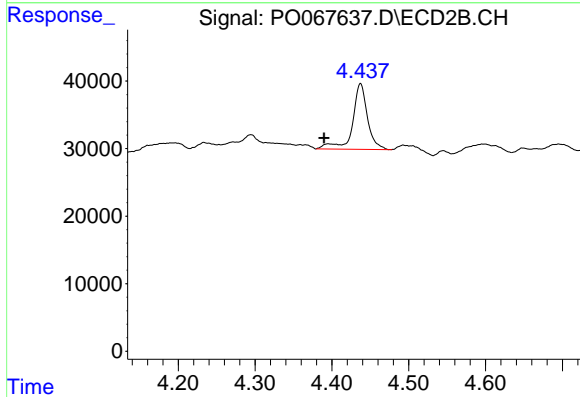
R.T.: 4.437 min
 Delta R.T.: 0.048 min
 Response: 131480
 Conc: 133.93 ng/ml



#11 AR-1232-1

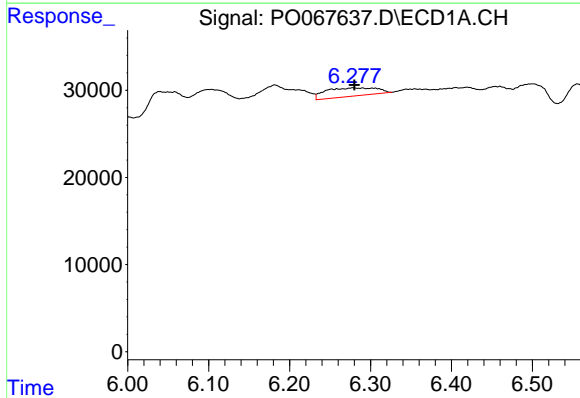
R.T.: 0.000 min
 Exp R.T.: 5.372 min
 Response: 0
 Conc: N.D.

Instrument :
 ECD_D
 ClientSampled :



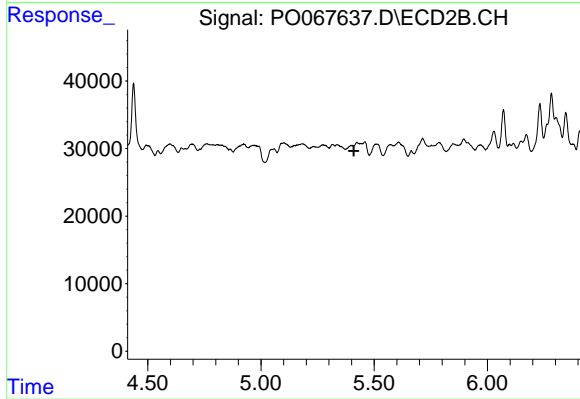
#11 AR-1232-1

R.T.: 4.437 min
 Delta R.T.: 0.048 min
 Response: 131480
 Conc: 189.98 ng/ml



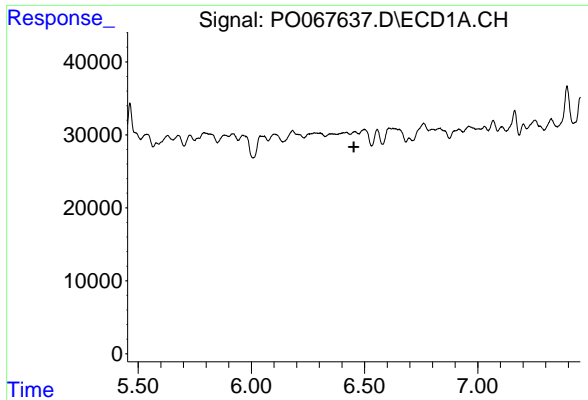
#13 AR-1232-3

R.T.: 6.278 min
 Delta R.T.: -0.002 min
 Response: 42006
 Conc: 80.14 ng/ml



#13 AR-1232-3

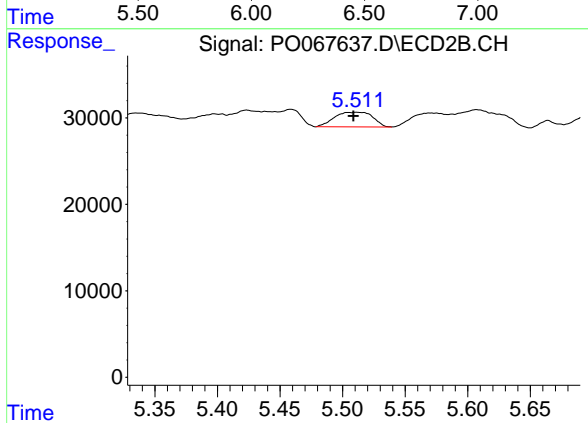
R.T.: 0.000 min
 Exp R.T.: 5.410 min
 Response: 0
 Conc: N.D.



#14 AR-1232-4

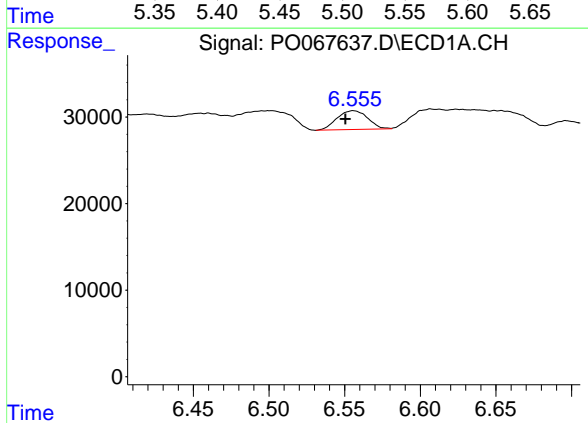
R.T.: 0.000 min
 Exp R.T.: 6.453 min
 Response: 0
 Conc: N.D.

Instrument :
 ECD_D
 ClientSampled :



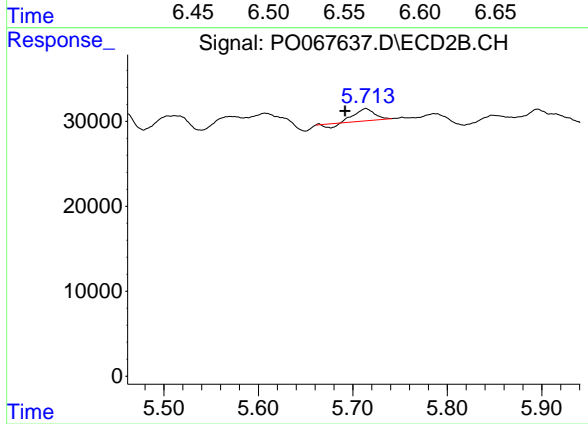
#14 AR-1232-4

R.T.: 5.511 min
 Delta R.T.: 0.003 min
 Response: 36191
 Conc: 102.30 ng/ml



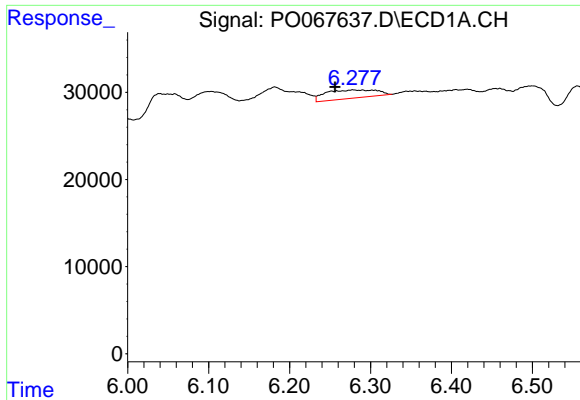
#15 AR-1232-5

R.T.: 6.556 min
 Delta R.T.: 0.005 min
 Response: 30722
 Conc: 164.02 ng/ml



#15 AR-1232-5

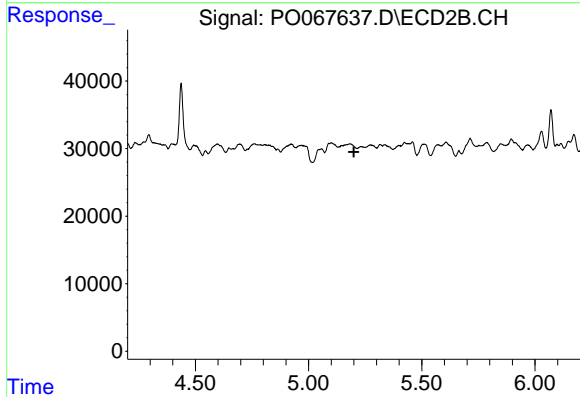
R.T.: 5.714 min
 Delta R.T.: 0.022 min
 Response: 18146
 Conc: 47.49 ng/ml



#16 AR-1242-1

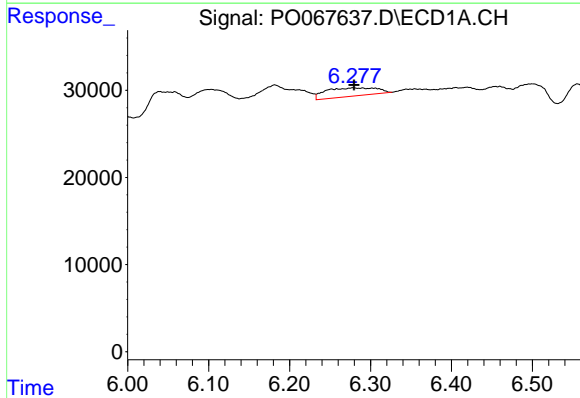
R.T.: 6.278 min
 Delta R.T.: 0.022 min
 Response: 42006
 Conc: 61.18 ng/ml

Instrument :
 ECD_D
 ClientSampled :



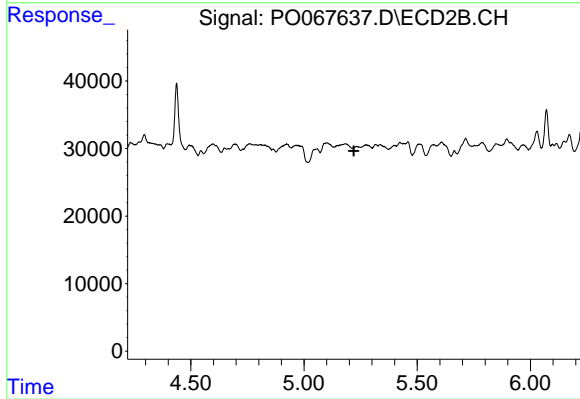
#16 AR-1242-1

R.T.: 0.000 min
 Exp R.T. : 5.200 min
 Response: 0
 Conc: N.D.



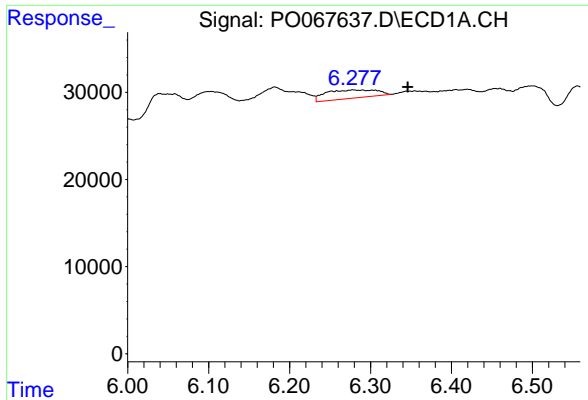
#17 AR-1242-2

R.T.: 6.278 min
 Delta R.T.: -0.001 min
 Response: 42006
 Conc: 44.71 ng/ml



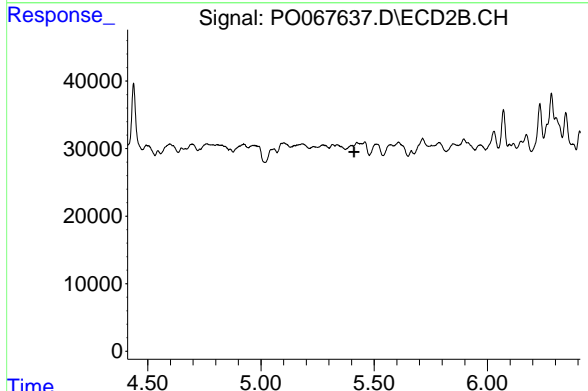
#17 AR-1242-2

R.T.: 0.000 min
 Exp R.T. : 5.220 min
 Response: 0
 Conc: N.D.

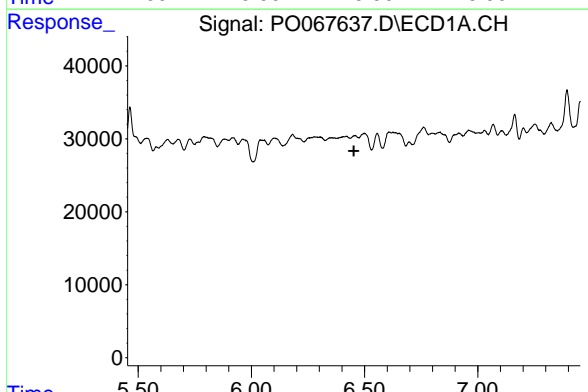


#18 AR-1242-3
 R.T.: 6.278 min
 Delta R.T.: -0.067 min
 Response: 42006
 Conc: 71.68 ng/ml

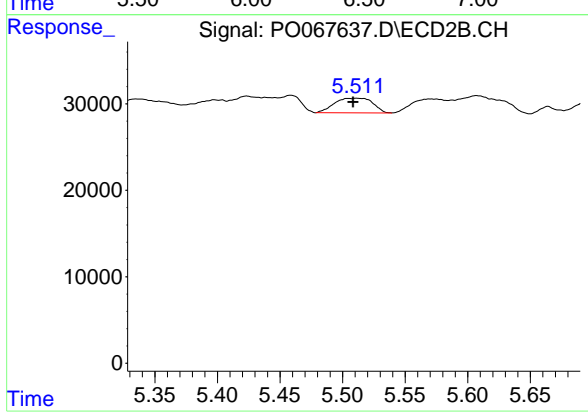
Instrument :
 ECD_D
 ClientSampled :



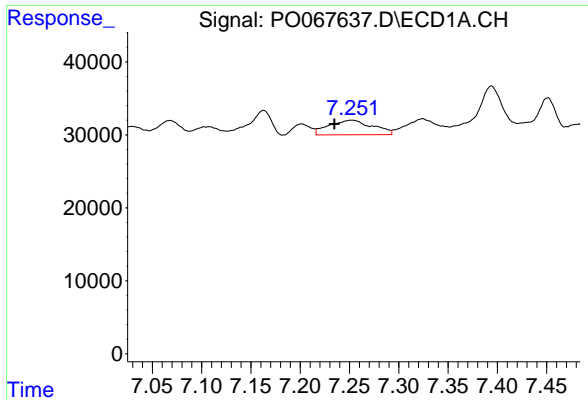
#18 AR-1242-3
 R.T.: 0.000 min
 Exp R.T. : 5.411 min
 Response: 0
 Conc: N.D.



#19 AR-1242-4
 R.T.: 0.000 min
 Exp R.T. : 6.453 min
 Response: 0
 Conc: N.D.

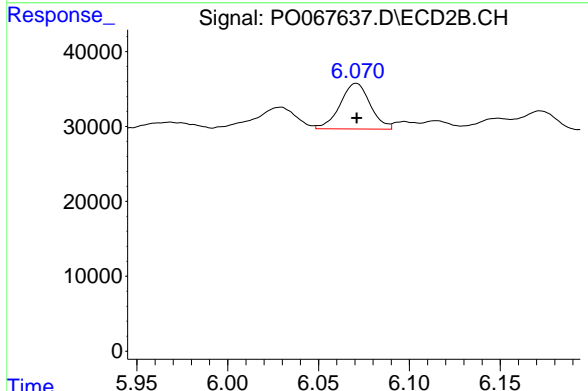


#19 AR-1242-4
 R.T.: 5.511 min
 Delta R.T.: 0.003 min
 Response: 36191
 Conc: 50.28 ng/ml

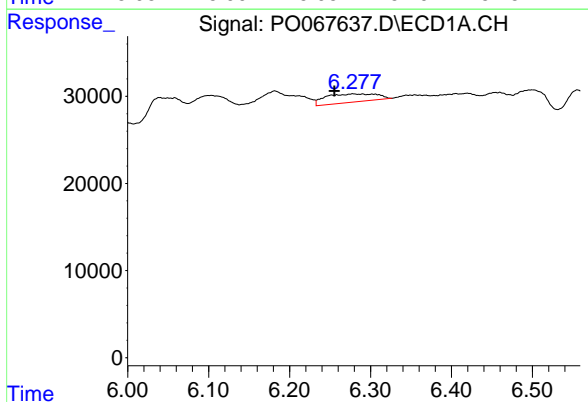


#20 AR-1242-5
 R.T.: 7.252 min
 Delta R.T.: 0.018 min
 Response: 61439
 Conc: 115.01 ng/ml

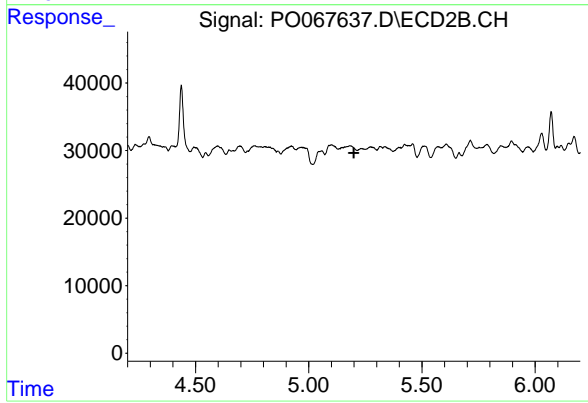
Instrument :
 ECD_D
 ClientSampled :



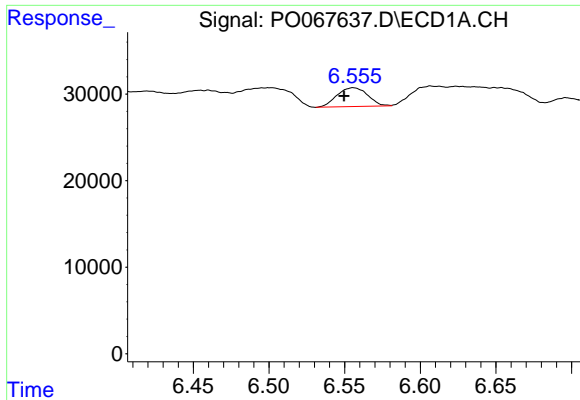
#20 AR-1242-5
 R.T.: 6.071 min
 Delta R.T.: 0.000 min
 Response: 70330
 Conc: 75.16 ng/ml



#21 AR-1248-1
 R.T.: 6.278 min
 Delta R.T.: 0.023 min
 Response: 42006
 Conc: 78.30 ng/ml



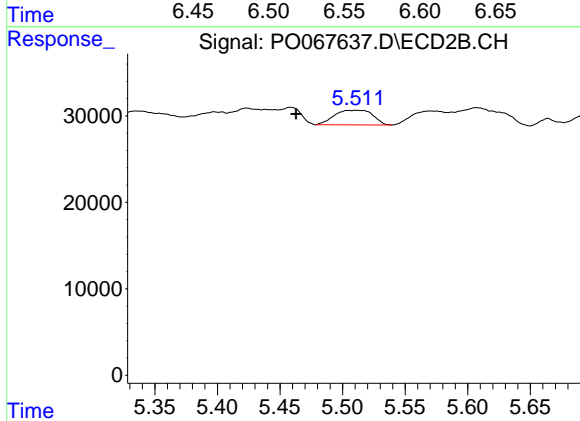
#21 AR-1248-1
 R.T.: 0.000 min
 Exp R.T. : 5.199 min
 Response: 0
 Conc: N.D.



#22 AR-1248-2

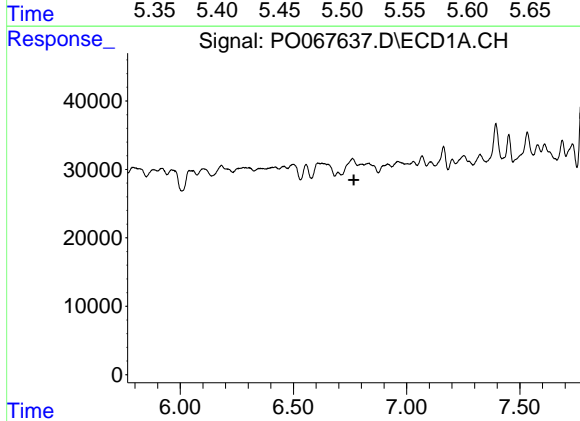
R.T.: 6.556 min
 Delta R.T.: 0.006 min
 Response: 30722
 Conc: 43.66 ng/ml

Instrument :
 ECD_D
 ClientSampled :



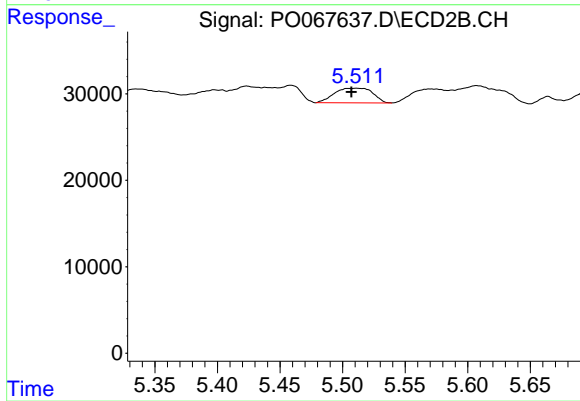
#22 AR-1248-2

R.T.: 5.511 min
 Delta R.T.: 0.048 min
 Response: 36191
 Conc: 35.97 ng/ml



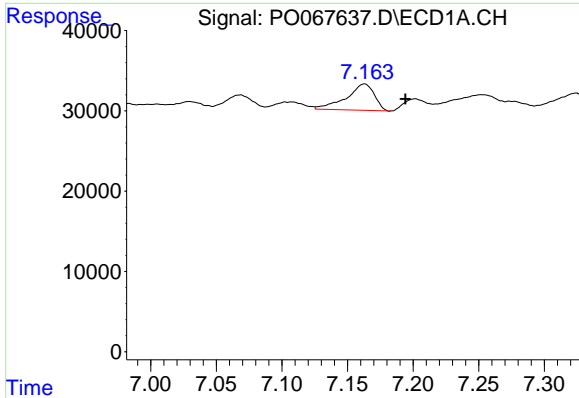
#23 AR-1248-3

R.T.: 0.000 min
 Exp R.T. : 6.767 min
 Response: 0
 Conc: N.D.



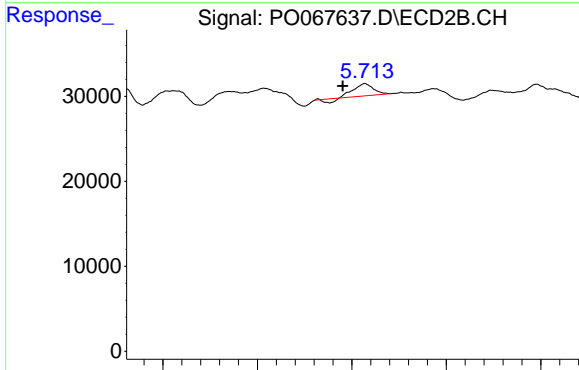
#23 AR-1248-3

R.T.: 5.511 min
 Delta R.T.: 0.004 min
 Response: 36191
 Conc: 35.38 ng/ml

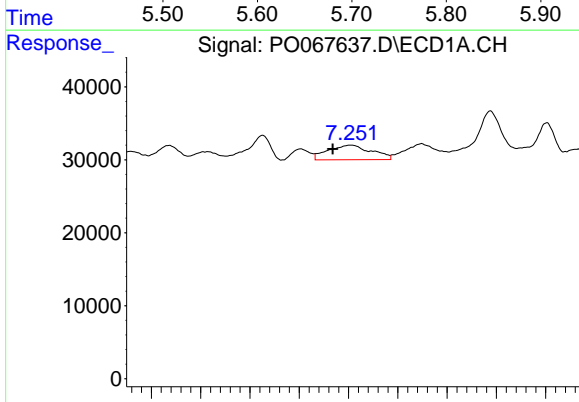


#24 AR-1248-4
 R.T.: 7.163 min
 Delta R.T.: -0.032 min
 Response: 48687
 Conc: 51.61 ng/ml

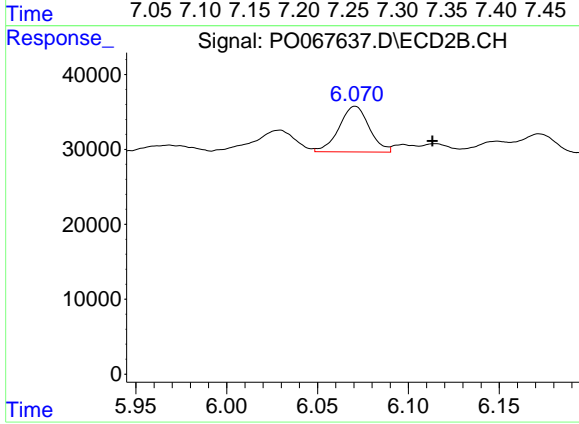
Instrument :
 ECD_D
 ClientSampleId :



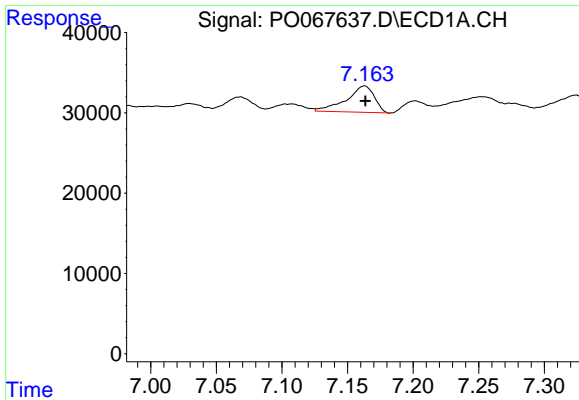
#24 AR-1248-4
 R.T.: 5.714 min
 Delta R.T.: 0.023 min
 Response: 18146
 Conc: 14.56 ng/ml



#25 AR-1248-5
 R.T.: 7.252 min
 Delta R.T.: 0.018 min
 Response: 61439
 Conc: 68.17 ng/ml

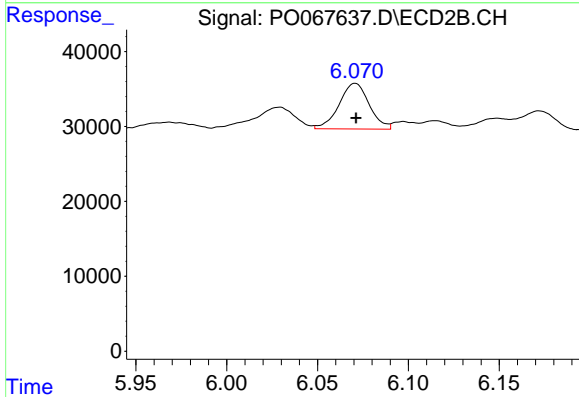


#25 AR-1248-5
 R.T.: 6.071 min
 Delta R.T.: -0.043 min
 Response: 70330
 Conc: 56.83 ng/ml

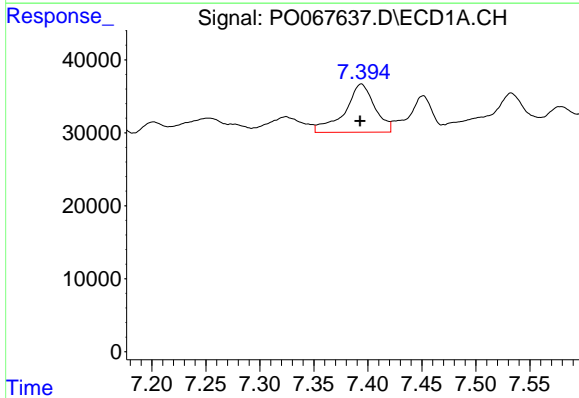


#26 AR-1254-1
 R.T.: 7.163 min
 Delta R.T.: -0.001 min
 Response: 48687
 Conc: 49.62 ng/ml

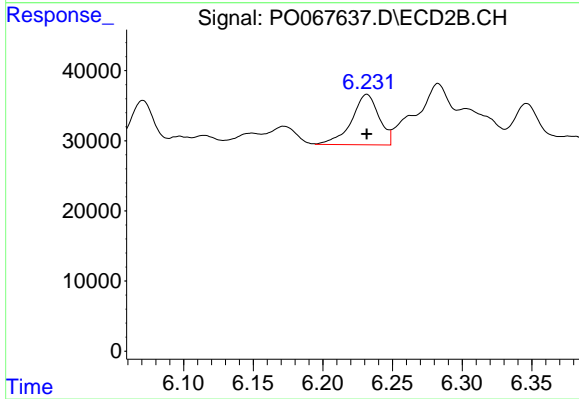
Instrument :
 ECD_D
 ClientSampleId :



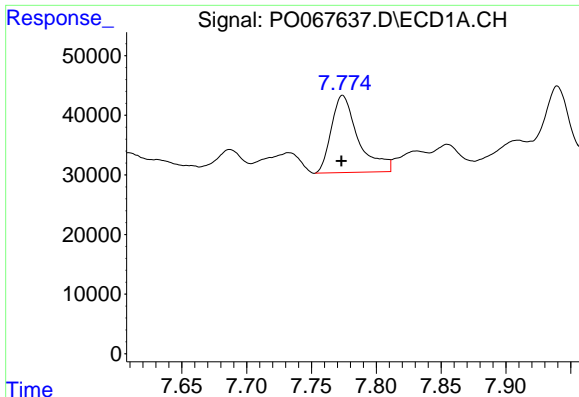
#26 AR-1254-1
 R.T.: 6.071 min
 Delta R.T.: 0.000 min
 Response: 70330
 Conc: 36.26 ng/ml



#27 AR-1254-2
 R.T.: 7.394 min
 Delta R.T.: 0.001 min
 Response: 127727
 Conc: 82.56 ng/ml



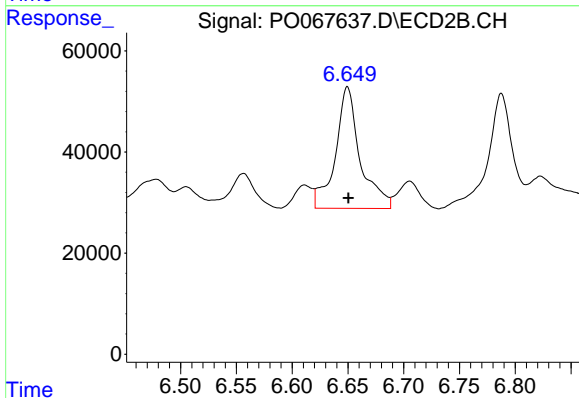
#27 AR-1254-2
 R.T.: 6.232 min
 Delta R.T.: 0.000 min
 Response: 98642
 Conc: 56.62 ng/ml



#28 AR-1254-3

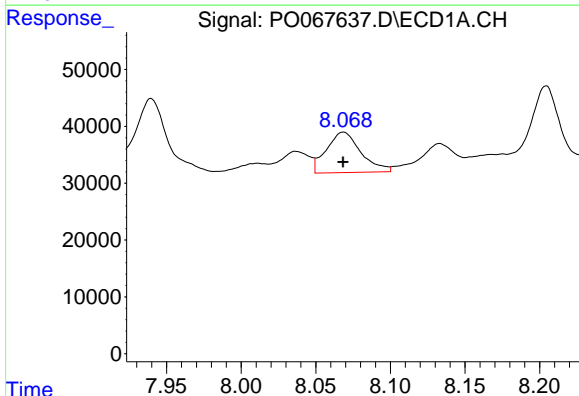
R.T.: 7.774 min
 Delta R.T.: 0.001 min
 Response: 187483
 Conc: 114.67 ng/ml

Instrument :
 ECD_D
 ClientSampled :



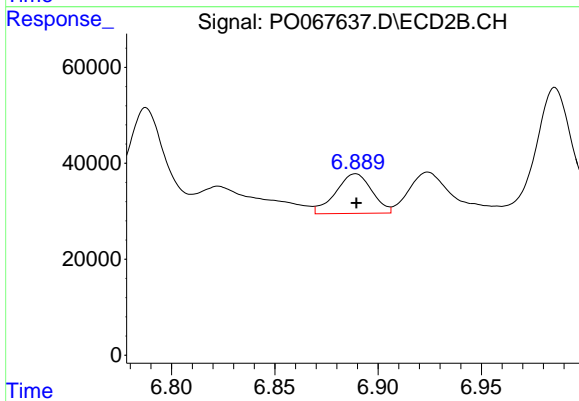
#28 AR-1254-3

R.T.: 6.650 min
 Delta R.T.: 0.000 min
 Response: 370700
 Conc: 133.81 ng/ml



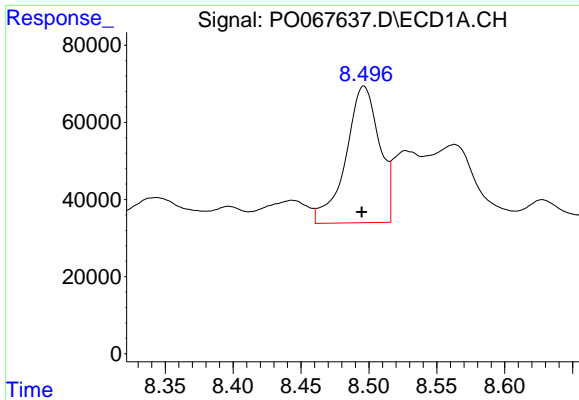
#29 AR-1254-4

R.T.: 8.069 min
 Delta R.T.: 0.000 min
 Response: 114801
 Conc: 89.57 ng/ml



#29 AR-1254-4

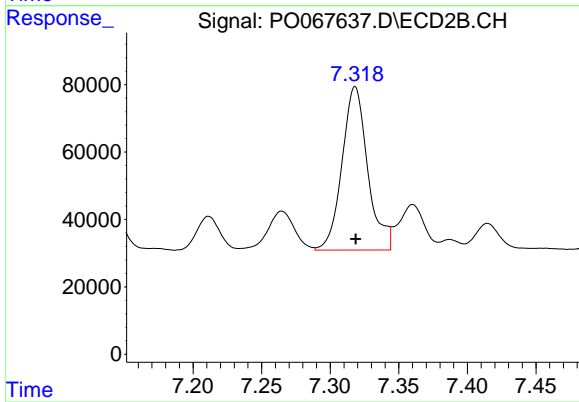
R.T.: 6.889 min
 Delta R.T.: 0.000 min
 Response: 100625
 Conc: 55.06 ng/ml



#30 AR-1254-5

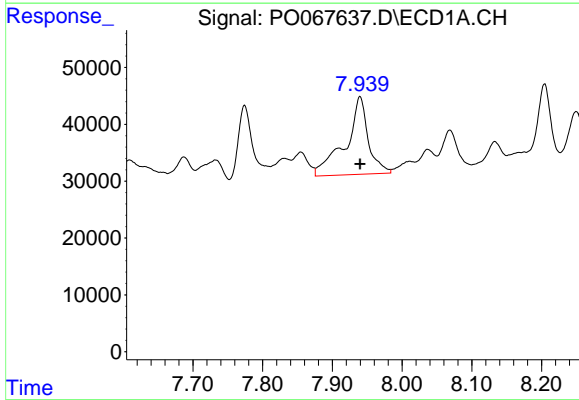
R.T.: 8.496 min
 Delta R.T.: 0.001 min
 Response: 610361
 Conc: 443.67 ng/ml

Instrument :
 ECD_D
 ClientSampleId :



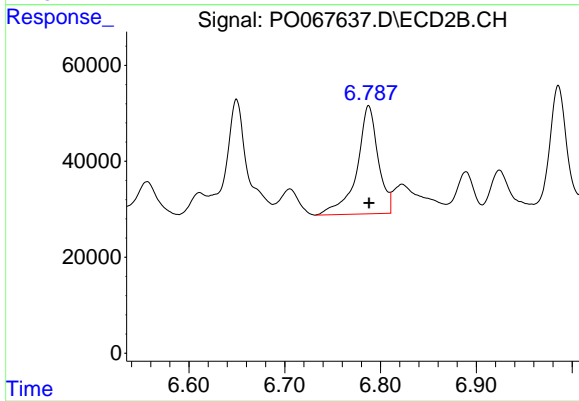
#30 AR-1254-5

R.T.: 7.318 min
 Delta R.T.: 0.000 min
 Response: 633348
 Conc: 248.58 ng/ml



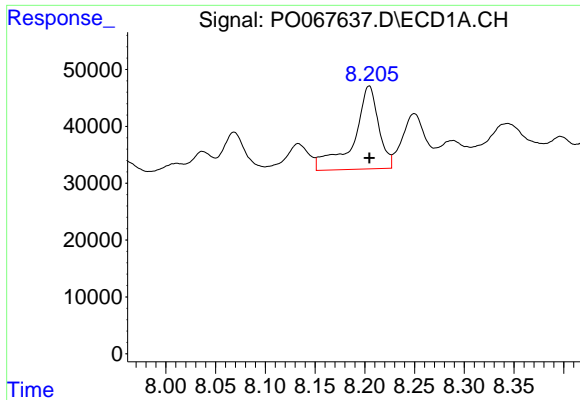
#31 AR-1260-1

R.T.: 7.940 min
 Delta R.T.: 0.000 min
 Response: 309645
 Conc: 229.12 ng/ml



#31 AR-1260-1

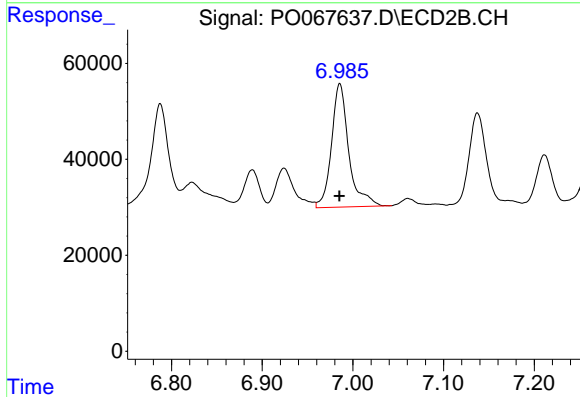
R.T.: 6.788 min
 Delta R.T.: 0.000 min
 Response: 347278
 Conc: 165.65 ng/ml



#32 AR-1260-2

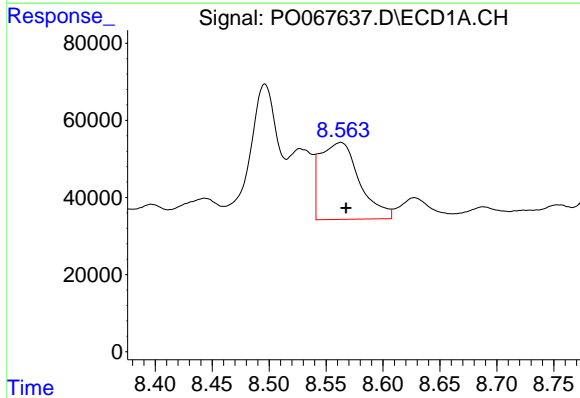
R.T.: 8.204 min
 Delta R.T.: 0.000 min
 Response: 254209
 Conc: 150.58 ng/ml

Instrument :
 ECD_D
 ClientSampleId :



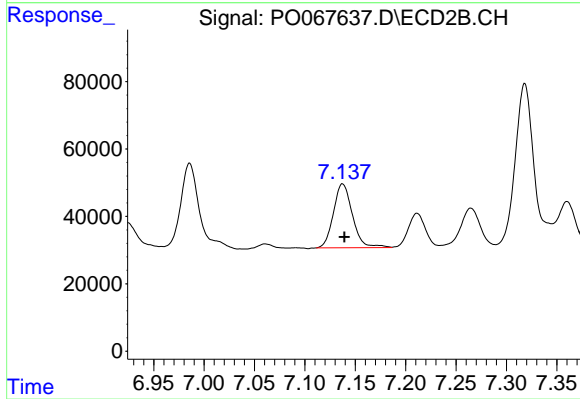
#32 AR-1260-2

R.T.: 6.986 min
 Delta R.T.: 0.000 min
 Response: 340640
 Conc: 132.66 ng/ml



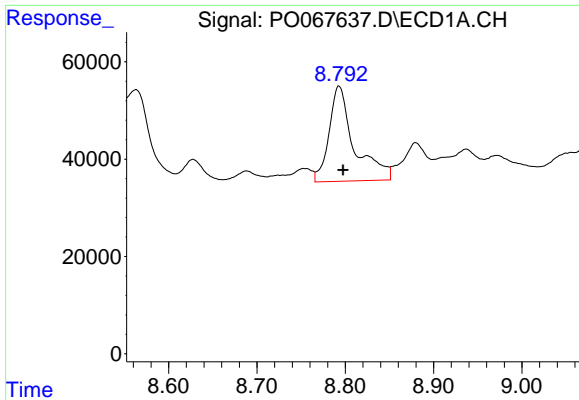
#33 AR-1260-3

R.T.: 8.562 min
 Delta R.T.: -0.005 min
 Response: 478613
 Conc: 367.18 ng/ml



#33 AR-1260-3

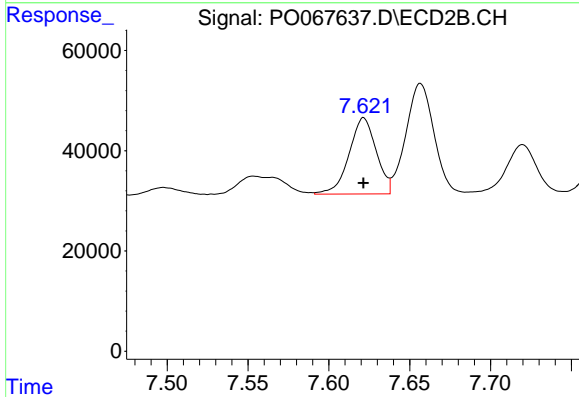
R.T.: 7.138 min
 Delta R.T.: -0.002 min
 Response: 249496
 Conc: 103.75 ng/ml



#34 AR-1260-4

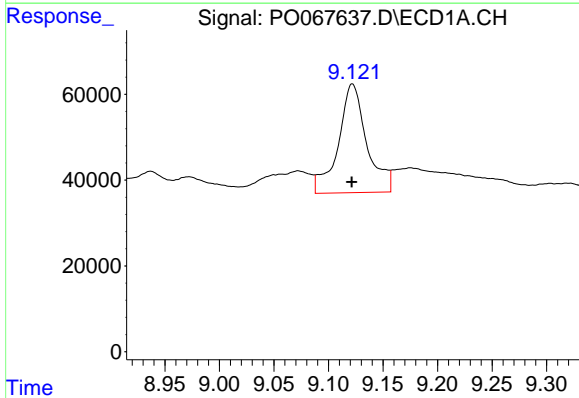
R.T.: 8.793 min
 Delta R.T.: -0.004 min
 Response: 387113
 Conc: 251.90 ng/ml

Instrument :
 ECD_D
 ClientSampleId :



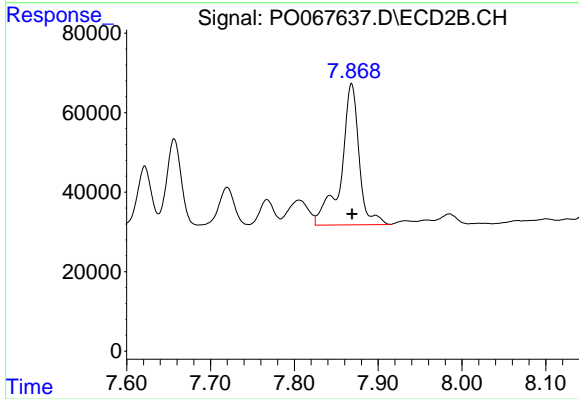
#34 AR-1260-4

R.T.: 7.622 min
 Delta R.T.: 0.000 min
 Response: 177874
 Conc: 84.63 ng/ml



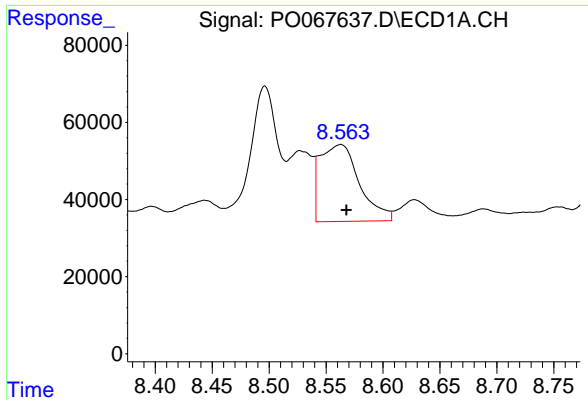
#35 AR-1260-5

R.T.: 9.122 min
 Delta R.T.: 0.000 min
 Response: 460845
 Conc: 146.09 ng/ml



#35 AR-1260-5

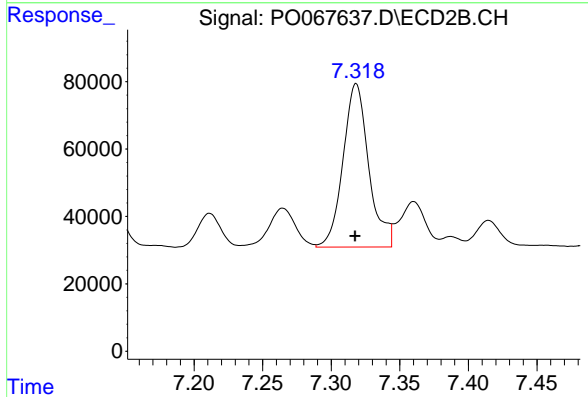
R.T.: 7.868 min
 Delta R.T.: 0.000 min
 Response: 525561
 Conc: 103.81 ng/ml



#36 AR-1262-1

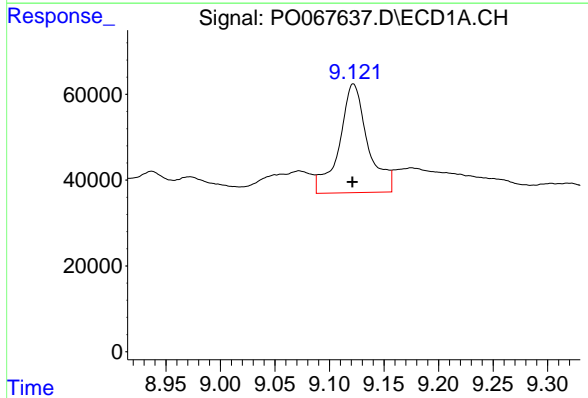
R.T.: 8.562 min
 Delta R.T.: -0.005 min
 Response: 478613
 Conc: 285.49 ng/ml

Instrument :
 ECD_D
 ClientSampled :



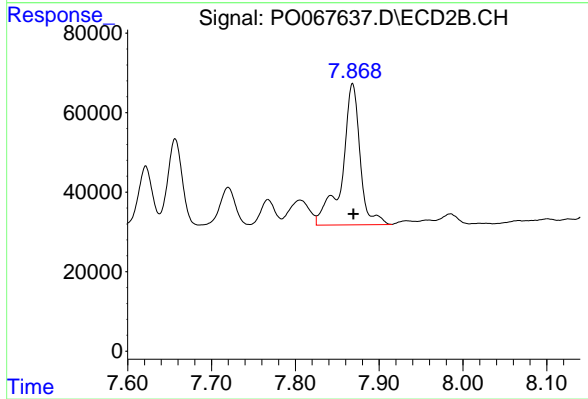
#36 AR-1262-1

R.T.: 7.318 min
 Delta R.T.: 0.000 min
 Response: 633348
 Conc: 457.05 ng/ml



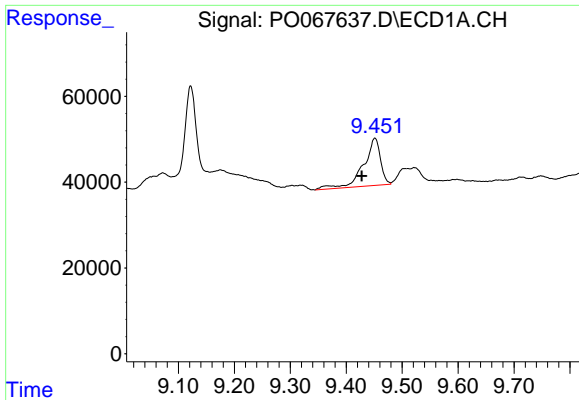
#37 AR-1262-2

R.T.: 9.122 min
 Delta R.T.: 0.001 min
 Response: 460845
 Conc: 160.60 ng/ml



#37 AR-1262-2

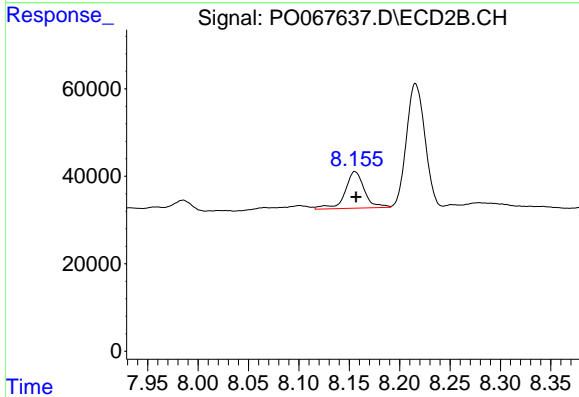
R.T.: 7.868 min
 Delta R.T.: -0.001 min
 Response: 525561
 Conc: 114.95 ng/ml



#38 AR-1262-3

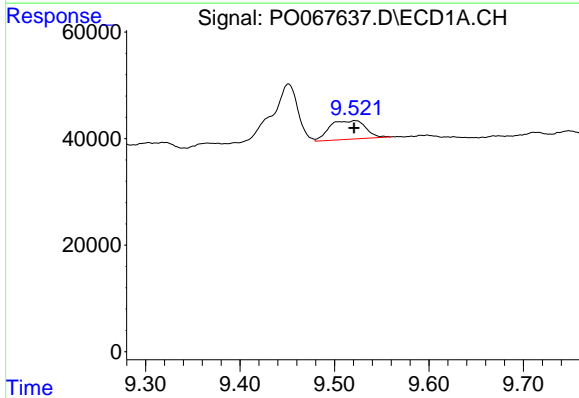
R.T.: 9.451 min
 Delta R.T.: 0.023 min
 Response: 233608
 Conc: 112.27 ng/ml

Instrument :
 ECD_D
 ClientSampleId :



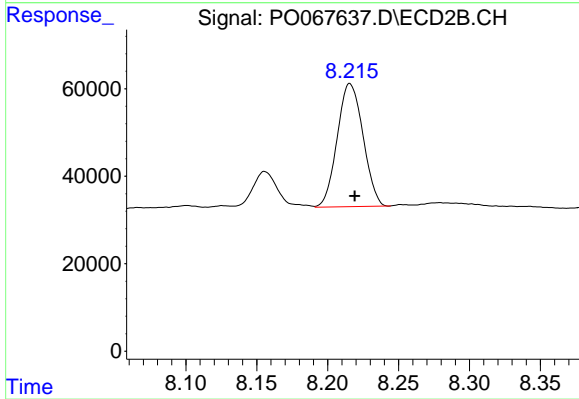
#38 AR-1262-3

R.T.: 8.156 min
 Delta R.T.: 0.000 min
 Response: 111645
 Conc: 56.80 ng/ml



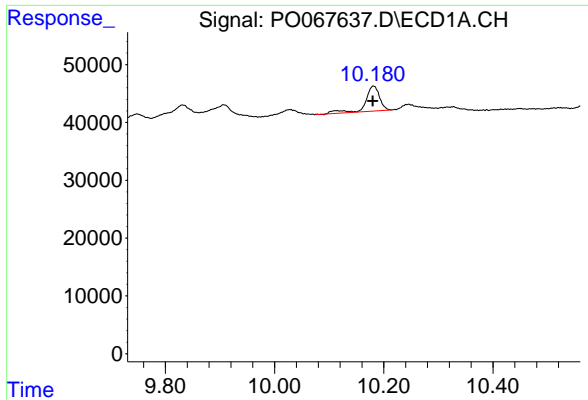
#39 AR-1262-4

R.T.: 9.522 min
 Delta R.T.: 0.000 min
 Response: 92336
 Conc: 58.35 ng/ml



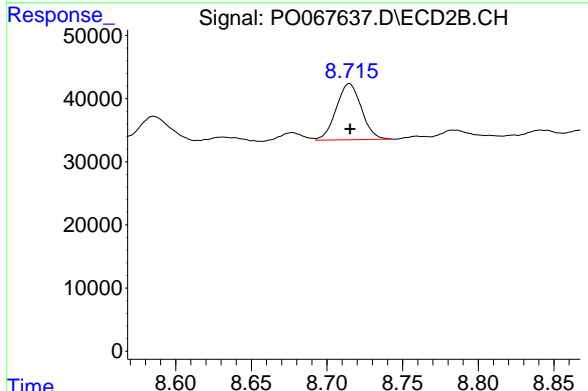
#39 AR-1262-4

R.T.: 8.216 min
 Delta R.T.: -0.003 min
 Response: 356827
 Conc: 104.09 ng/ml

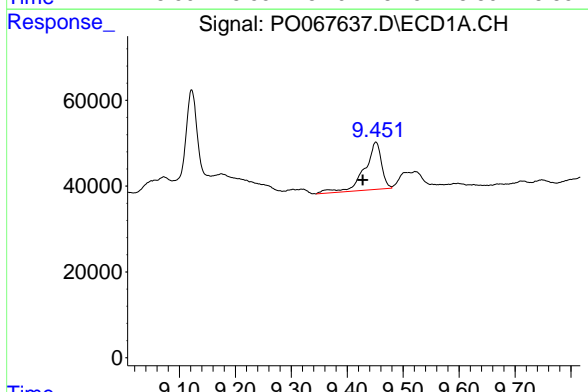


#40 AR-1262-5
 R.T.: 10.181 min
 Delta R.T.: 0.001 min
 Response: 77499
 Conc: 65.73 ng/ml

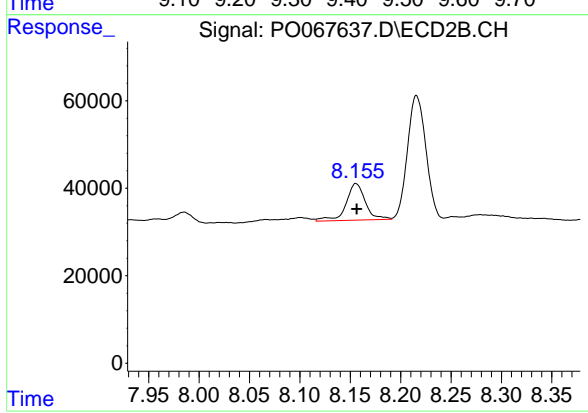
Instrument :
 ECD_D
 ClientSampleId :



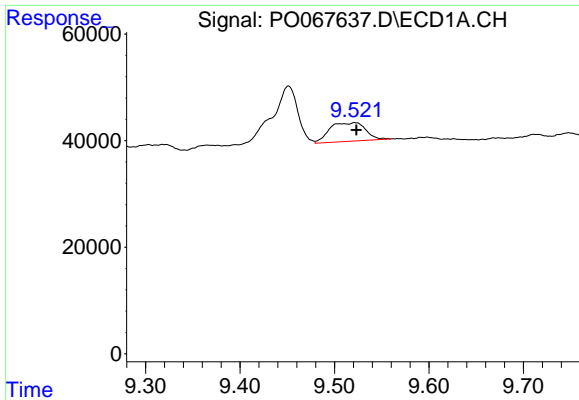
#40 AR-1262-5
 R.T.: 8.715 min
 Delta R.T.: 0.000 min
 Response: 103068
 Conc: 60.63 ng/ml



#41 AR-1268-1
 R.T.: 9.451 min
 Delta R.T.: 0.024 min
 Response: 233608
 Conc: 63.22 ng/ml

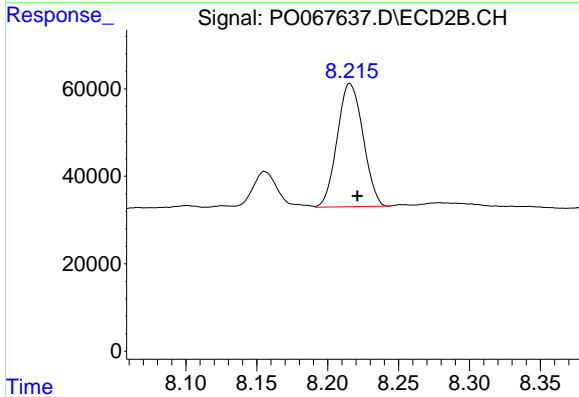


#41 AR-1268-1
 R.T.: 8.156 min
 Delta R.T.: 0.000 min
 Response: 111645
 Conc: 20.75 ng/ml

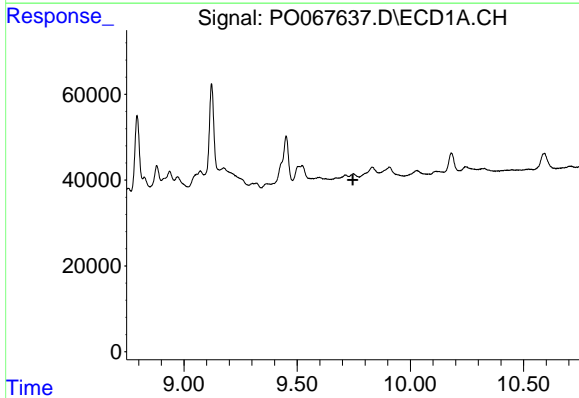


#42 AR-1268-2
 R.T.: 9.522 min
 Delta R.T.: -0.001 min
 Response: 92336
 Conc: 26.64 ng/ml

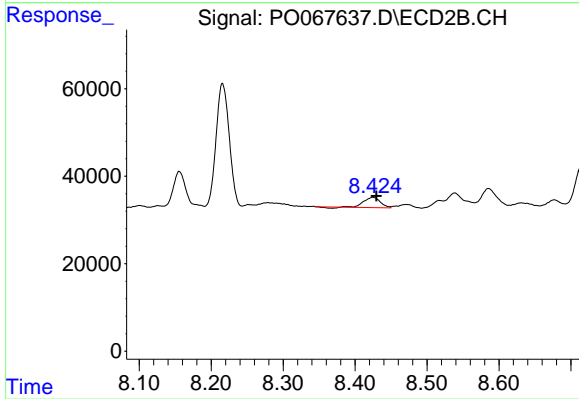
Instrument :
 ECD_D
 ClientSampleId :



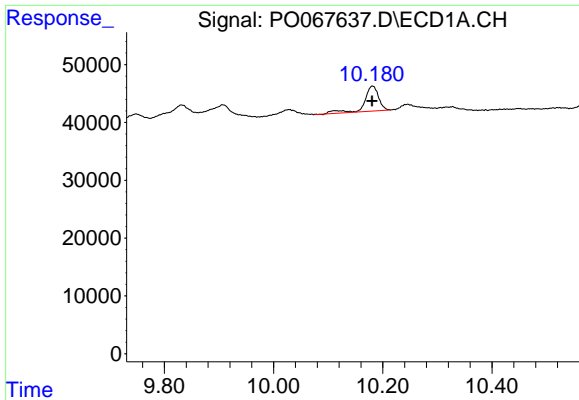
#42 AR-1268-2
 R.T.: 8.216 min
 Delta R.T.: -0.005 min
 Response: 356827
 Conc: 72.27 ng/ml



#43 AR-1268-3
 R.T.: 0.000 min
 Exp R.T. : 9.746 min
 Response: 0
 Conc: N.D.

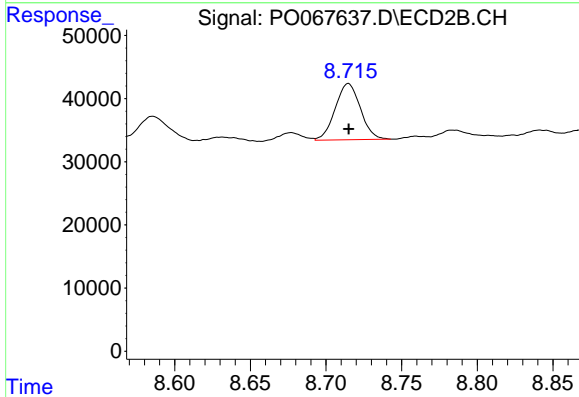


#43 AR-1268-3
 R.T.: 8.425 min
 Delta R.T.: -0.005 min
 Response: 36143
 Conc: 8.62 ng/ml

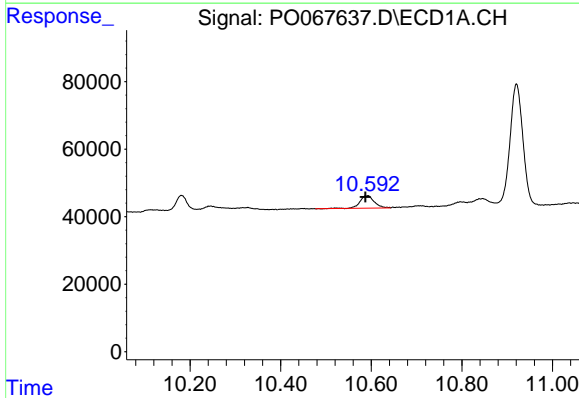


#44 AR-1268-4
 R.T.: 10.181 min
 Delta R.T.: 0.000 min
 Response: 77499
 Conc: 55.83 ng/ml

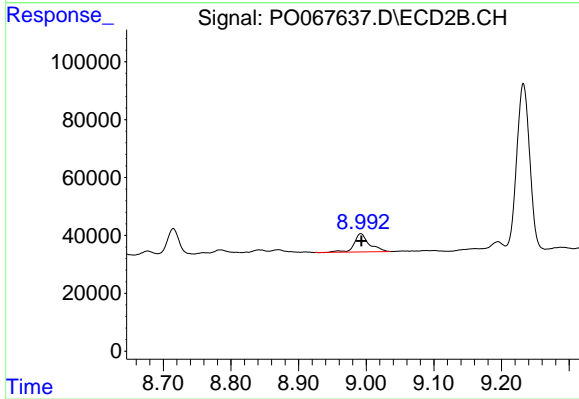
Instrument :
 ECD_D
 ClientSampled :



#44 AR-1268-4
 R.T.: 8.715 min
 Delta R.T.: 0.000 min
 Response: 103068
 Conc: 53.27 ng/ml



#45 AR-1268-5
 R.T.: 10.591 min
 Delta R.T.: 0.004 min
 Response: 81727
 Conc: 8.24 ng/ml



#45 AR-1268-5
 R.T.: 8.992 min
 Delta R.T.: 0.000 min
 Response: 98684
 Conc: 7.65 ng/ml