

Data Path : Z:\pestpcbsrv\HPCHEM1\ECD_D\Data\PD040321\
 Data File : PD061978.D
 Signal(s) : Signal #1: ECD1A.ch Signal #2: ECD2B.ch
 Acq On : 02 Apr 2021 18:23
 Operator : AR\AJ
 Sample : INDB101
 Misc :
 ALS Vial : 10 Sample Multiplier: 1

Instrument :
 ECD_D
 ClientSampleId :
 INDB1002

Integration File signal 1: autoint1.e
 Integration File signal 2: autoint2.e
 Quant Time: Apr 03 02:17:15 2021
 Quant Method : Z:\pestpcbsrv\HPCHEM1\ECD_D\Method\PD040321CLP.M
 Quant Title : GC Extractables
 QLast Update : Sat Apr 03 02:16:28 2021
 Response via : Initial Calibration
 Integrator: ChemStation

Volume Inj. : 1 µl
 Signal #1 Phase : ZB-MR2 Signal #2 Phase: ZB-MR1
 Signal #1 Info : 30M x 0.32mm x0.2 Signal #2 Info : 30M x 0.32mm x 0.50µm

Compound	RT#1	RT#2	Resp#1	Resp#2	ng/ml	ng/ml

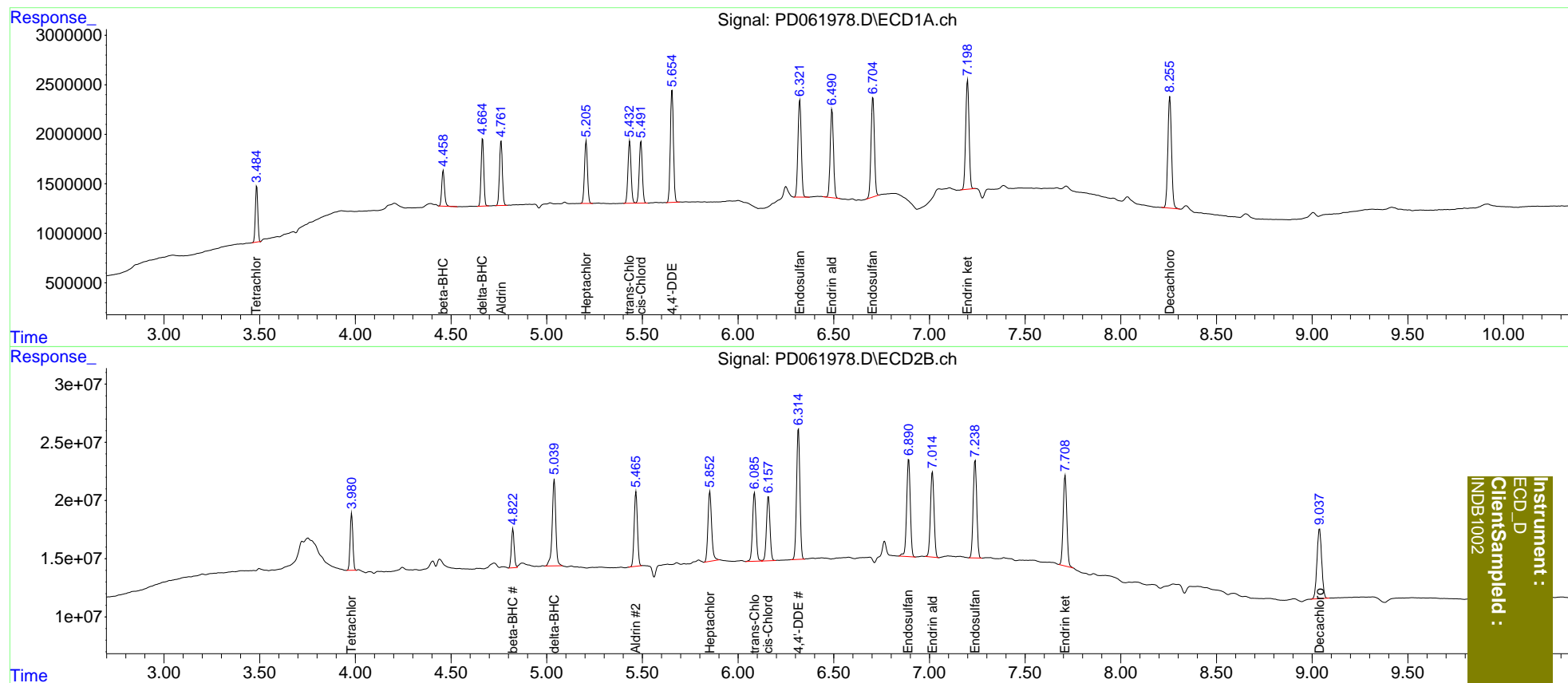
System Monitoring Compounds						
1) SA Tetrachlo...	3.485	3.981	5018410	48529788	5.292	4.884
27) SA Decachlor...	8.257	9.039	15274746	102.2E6	11.701	11.206
Target Compounds						
5) MB Aldrin	4.762	5.467	6820406	75786655	5.015	5.261
6) B beta-BHC	4.459	4.824	3656729	34297597	5.534	5.371
7) B delta-BHC	4.665	5.040	6683128	96321495	4.885	6.836 #
8) B Heptachlo...	5.206	5.853	6792918	80346731	5.192	6.234
10) B trans-Chl...	5.434	6.086	7044400	75557030	5.168	5.462
11) B cis-Chlor...	5.492	6.159	6993726	70727581	5.202	5.455
12) B 4,4'-DDE	5.655	6.315	12757840	136.6E6	9.874	10.622
15) B Endosulfa...	6.323	6.892	11899500	110.7E6	10.730	10.904
18) B Endrin al...	6.491	7.016	10534536	95501992	11.082	10.997
19) B Endosulfa...	6.705	7.239	12352629	109.8E6	10.863	10.767
21) B Endrin ke...	7.199	7.709	13476760	102.4E6	10.329	10.577

(f)=RT Delta > 1/2 Window (#)=Amounts differ by > 25% (m)=manual int.

Data Path : Z:\pestpcbsrv\HPCHEM1\ECD_D\Data\PD040321\
 Data File : PD061978.D
 Signal(s) : Signal #1: ECD1A.ch Signal #2: ECD2B.ch
 Acq On : 02 Apr 2021 18:23
 Operator : AR\AJ
 Sample : INDB101
 Misc :
 ALS Vial : 10 Sample Multiplier: 1

Integration File signal 1: autoint1.e
 Integration File signal 2: autoint2.e
 Quant Time: Apr 03 02:17:15 2021
 Quant Method : Z:\pestpcbsrv\HPCHEM1\ECD_D\Method\PD040321CLP.M
 Quant Title : GC Extractables
 QLast Update : Sat Apr 03 02:16:28 2021
 Response via : Initial Calibration
 Integrator: ChemStation

Volume Inj. : 1 µl
 Signal #1 Phase : ZB-MR2 Signal #2 Phase: ZB-MR1
 Signal #1 Info : 30M x 0.32mm x0.2 Signal #2 Info : 30M x 0.32mm x 0.50µm



Instrument :
 ECD_D
 ClientSampleId :
 INDB1002