

Data Path : Z:\pestpcbsrv\HPCHEM1\ECD\_D\Data\PD040321\  
 Data File : PD061979.D  
 Signal(s) : Signal #1: ECD1A.ch Signal #2: ECD2B.ch  
 Acq On : 02 Apr 2021 18:37  
 Operator : AR\AJ  
 Sample : INDA201  
 Misc :  
 ALS Vial : 11 Sample Multiplier: 1

Instrument :  
 ECD\_D  
 ClientSampleID :  
 INDA2002

Integration File signal 1: autoint1.e  
 Integration File signal 2: autoint2.e  
 Quant Time: Apr 03 04:55:54 2021  
 Quant Method : Z:\pestpcbsrv\HPCHEM1\ECD\_D\Method\PD040321CLP.M  
 Quant Title : GC Extractables  
 QLast Update : Sat Apr 03 04:27:06 2021  
 Response via : Initial Calibration  
 Integrator: ChemStation

Volume Inj. : 1 µl  
 Signal #1 Phase : ZB-MR2 Signal #2 Phase: ZB-MR1  
 Signal #1 Info : 30M x 0.32mm x0.2 Signal #2 Info : 30M x 0.32mm x 0.50µm

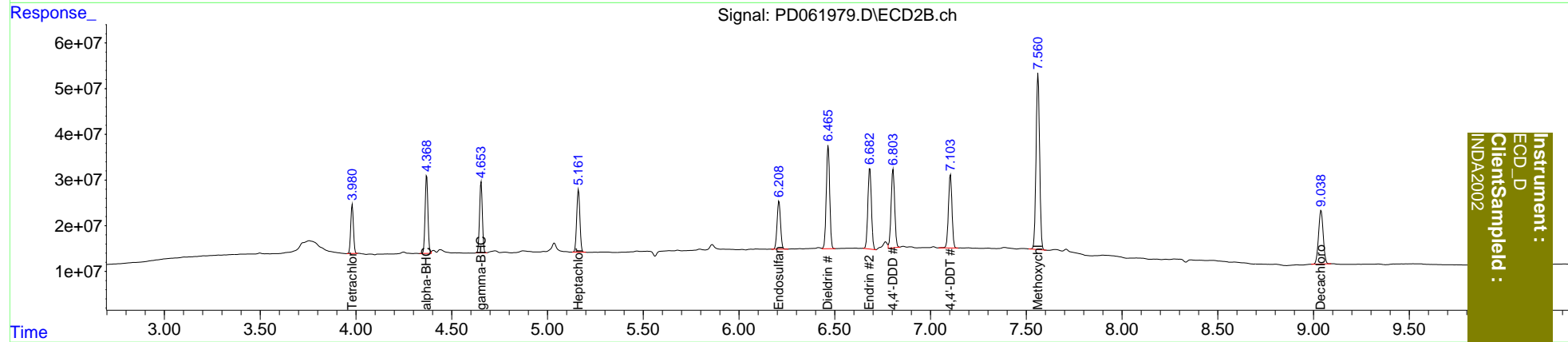
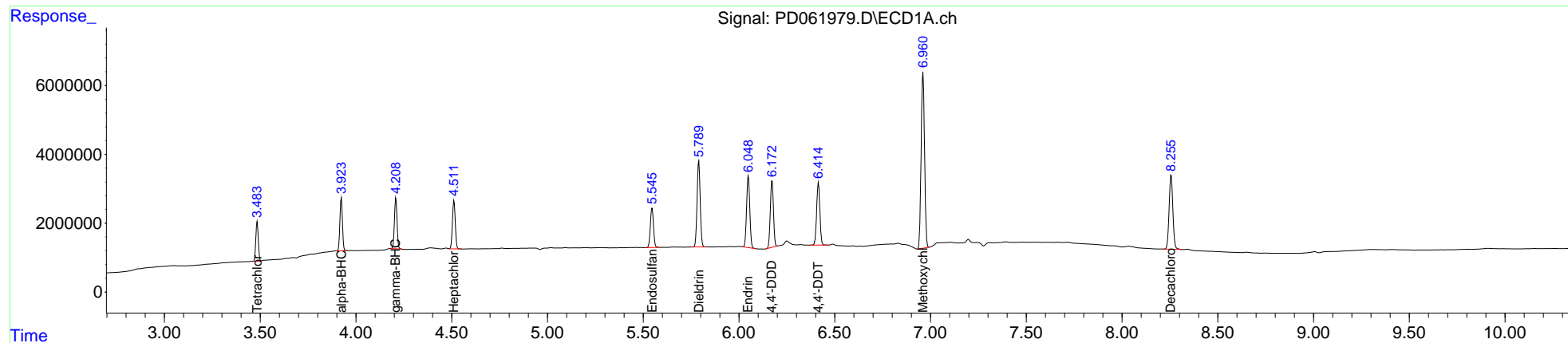
|                             | Compound        | RT#1  | RT#2  | Resp#1   | Resp#2  | ng/ml   | ng/ml   |
|-----------------------------|-----------------|-------|-------|----------|---------|---------|---------|
| -----                       |                 |       |       |          |         |         |         |
| System Monitoring Compounds |                 |       |       |          |         |         |         |
| 1)                          | SA Tetrachlo... | 3.485 | 3.981 | 10175660 | 105.1E6 | 10.648  | 10.648  |
| 27)                         | SA Decachlor... | 8.256 | 9.039 | 29297727 | 197.9E6 | 22.395  | 21.954  |
| Target Compounds            |                 |       |       |          |         |         |         |
| 2)                          | A alpha-BHC     | 3.924 | 4.370 | 14058857 | 174.3E6 | 10.186  | 11.073  |
| 3)                          | MA gamma-BHC... | 4.209 | 4.654 | 14070717 | 158.2E6 | 10.447  | 11.270  |
| 4)                          | MA Heptachlor   | 4.513 | 5.162 | 14482843 | 159.1E6 | 10.401  | 11.608  |
| 9)                          | A Endosulfan I  | 5.547 | 6.209 | 13112381 | 130.6E6 | 10.556  | 10.736  |
| 13)                         | MA Dieldrin     | 5.791 | 6.466 | 28304837 | 279.8E6 | 20.641  | 21.398  |
| 14)                         | MA Endrin       | 6.049 | 6.683 | 24113687 | 229.0E6 | 20.672  | 21.454  |
| 16)                         | A 4,4'-DDD      | 6.173 | 6.805 | 22089692 | 223.4E6 | 20.639  | 21.645  |
| 17)                         | MA 4,4'-DDT     | 6.415 | 7.104 | 21325442 | 206.7E6 | 20.330  | 20.694  |
| 20)                         | A Methoxychlor  | 6.961 | 7.562 | 63398488 | 498.9E6 | 106.661 | 106.165 |

(f)=RT Delta > 1/2 Window (#)=Amounts differ by > 25% (m)=manual int.

Data Path : Z:\pestpcbsrv\HPCHEM1\ECD\_D\Data\PD040321\  
 Data File : PD061979.D  
 Signal(s) : Signal #1: ECD1A.ch Signal #2: ECD2B.ch  
 Acq On : 02 Apr 2021 18:37  
 Operator : AR\AJ  
 Sample : INDA201  
 Misc :  
 ALS Vial : 11 Sample Multiplier: 1

Integration File signal 1: autoint1.e  
 Integration File signal 2: autoint2.e  
 Quant Time: Apr 03 04:55:54 2021  
 Quant Method : Z:\pestpcbsrv\HPCHEM1\ECD\_D\Method\PD040321CLP.M  
 Quant Title : GC Extractables  
 QLast Update : Sat Apr 03 04:27:06 2021  
 Response via : Initial Calibration  
 Integrator: ChemStation

Volume Inj. : 1 µl  
 Signal #1 Phase : ZB-MR2 Signal #2 Phase: ZB-MR1  
 Signal #1 Info : 30M x 0.32mm x0.2 Signal #2 Info : 30M x 0.32mm x 0.50µm



Instrument :  
 ECD\_D  
 ClientSampleId :  
 INDA2002