

Data Path : Z:\pestpcbsrv\HPCHEM1\ECD_D\Data\PD040322\
 Data File : PD068893.D
 Signal(s) : Signal #1: ECD1A.ch Signal #2: ECD2B.ch
 Acq On : 01 Apr 2022 13:36
 Operator : AR\AJ
 Sample : N2207-03
 Misc :
 ALS Vial : 9 Sample Multiplier: 1

Instrument :
 ECD_D
 ClientSampleId :
 20220342-096-21-03

Integration File signal 1: autoint1.e
 Integration File signal 2: autoint2.e
 Quant Time: Apr 01 23:29:02 2022
 Quant Method : Z:\pestpcbsrv\HPCHEM1\ECD_D\Method\PD031222.M
 Quant Title : GC Extractables
 QLast Update : Mon Mar 14 03:30:32 2022
 Response via : Initial Calibration
 Integrator: ChemStation

Volume Inj. : 2 µl
 Signal #1 Phase : ZB-MR2 Signal #2 Phase: ZB-MR1
 Signal #1 Info : 30M x 0.32mm x0.2 Signal #2 Info : 30M x 0.32mm x 0.50µm

Compound	RT#1	RT#2	Resp#1	Resp#2	ng/ml	ng/ml

System Monitoring Compounds						
1) SA Tetrachlo...	3.447	4.173	25073375	230.0E6	20.651	24.052
28) SA Decachlor...	8.209	9.373	22557926	117.5E6	17.855	20.732

Target Compounds

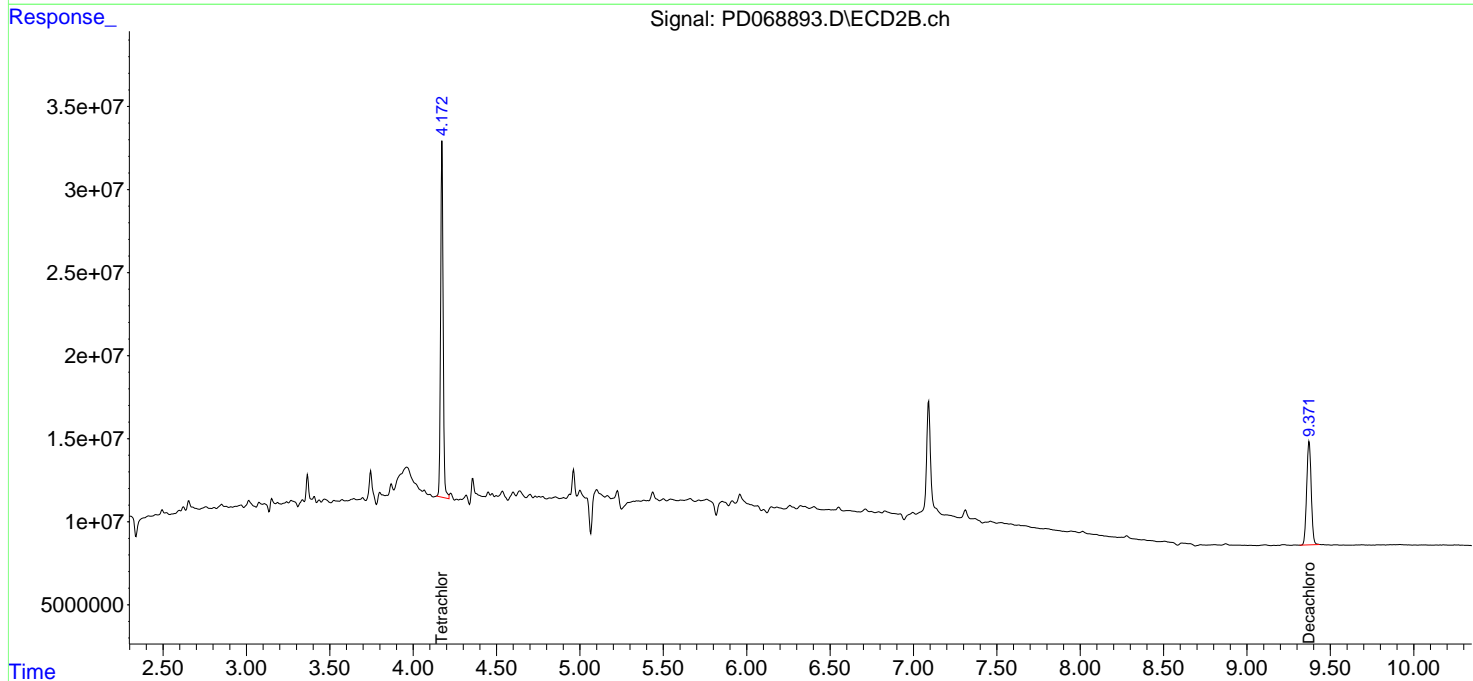
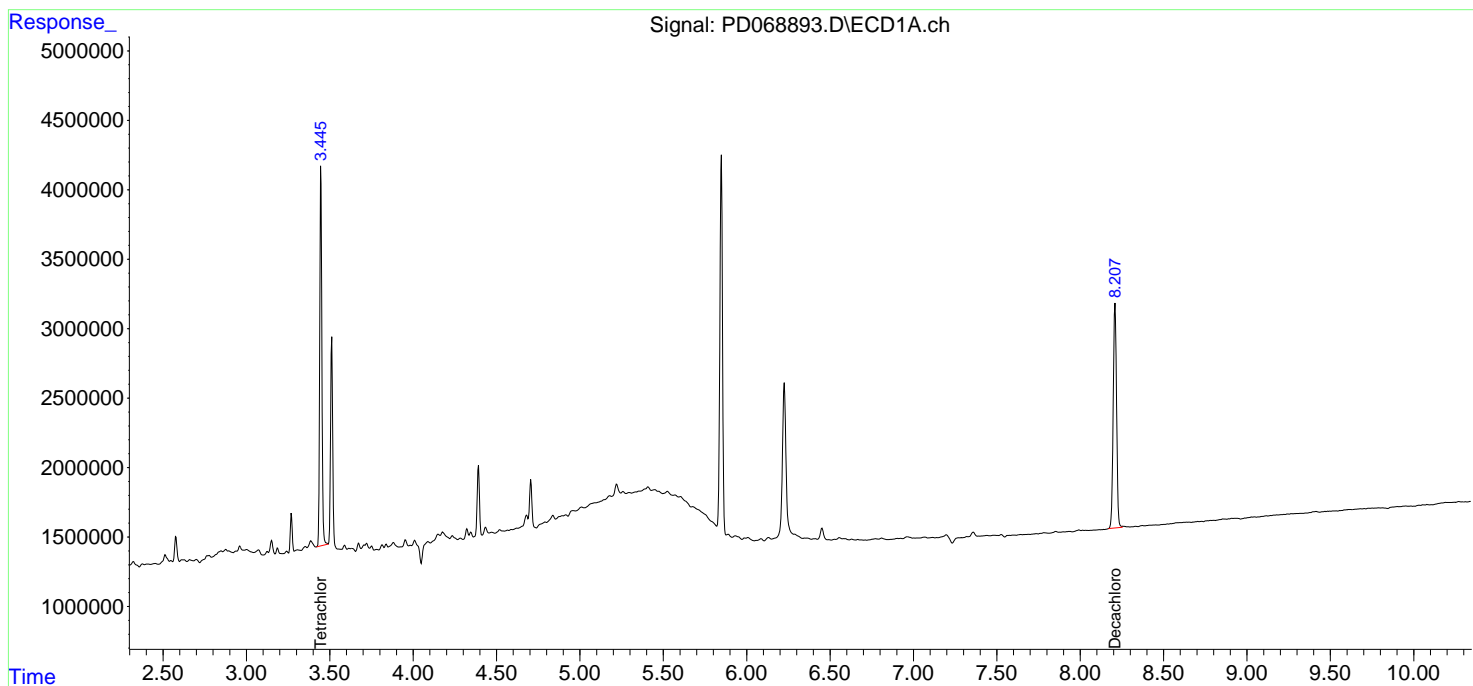
(f)=RT Delta > 1/2 Window (#)=Amounts differ by > 25% (m)=manual int.

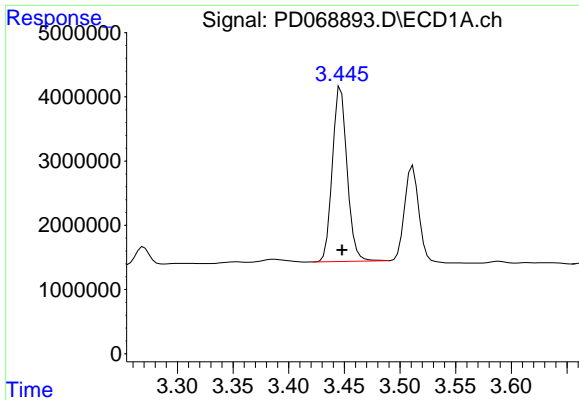
Data Path : Z:\pestpcbsrv\HPCHEM1\ECD_D\Data\PD040322\
 Data File : PD068893.D
 Signal(s) : Signal #1: ECD1A.ch Signal #2: ECD2B.ch
 Acq On : 01 Apr 2022 13:36
 Operator : AR\AJ
 Sample : N2207-03
 Misc :
 ALS Vial : 9 Sample Multiplier: 1

Instrument :
 ECD_D
 ClientSampleId :
 20220342-096-21-03

Integration File signal 1: autoint1.e
 Integration File signal 2: autoint2.e
 Quant Time: Apr 01 23:29:02 2022
 Quant Method : Z:\pestpcbsrv\HPCHEM1\ECD_D\Method\PD031222.M
 Quant Title : GC Extractables
 QLast Update : Mon Mar 14 03:30:32 2022
 Response via : Initial Calibration
 Integrator: ChemStation

Volume Inj. : 2 µl
 Signal #1 Phase : ZB-MR2 Signal #2 Phase: ZB-MR1
 Signal #1 Info : 30M x 0.32mm x 0.2 Signal #2 Info : 30M x 0.32mm x 0.50µm

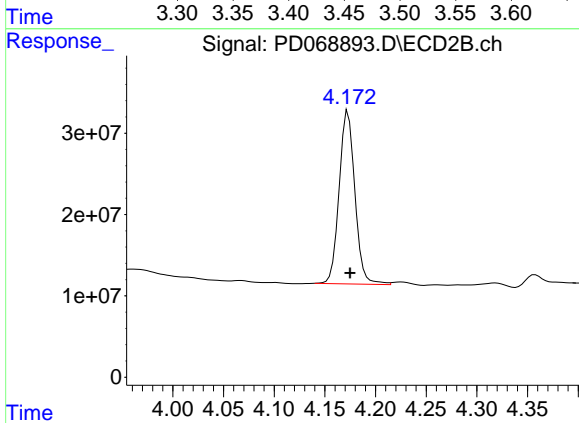




#1 Tetrachloro-m-xylene

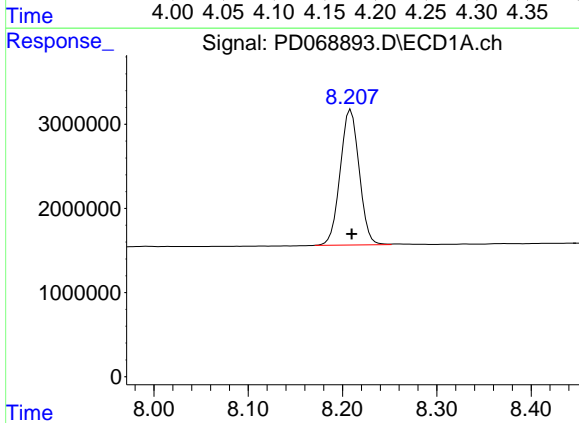
R.T.: 3.447 min
 Delta R.T.: -0.001 min
 Response: 25073375
 Conc: 20.65 ng/ml

Instrument :
 ECD_D
 ClientSampleId :
 20220342-096-21-03



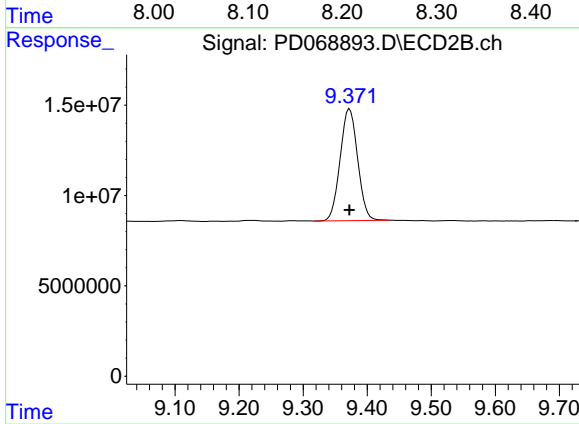
#1 Tetrachloro-m-xylene

R.T.: 4.173 min
 Delta R.T.: -0.002 min
 Response: 229954203
 Conc: 24.05 ng/ml



#28 Decachlorobiphenyl

R.T.: 8.209 min
 Delta R.T.: 0.000 min
 Response: 22557926
 Conc: 17.86 ng/ml



#28 Decachlorobiphenyl

R.T.: 9.373 min
 Delta R.T.: 0.000 min
 Response: 117484880
 Conc: 20.73 ng/ml