

Data Path : Z:\pestpcbsrv\HPCHEM1\ECD_D\Data\PD040419\
 Data File : PD052551.D
 Signal(s) : Signal #1: ECD1A.CH Signal #2: ECD2B.CH
 Acq On : 02 Apr 2019 23:43
 Operator : AJ\SJ
 Sample : K2119-07DL 10X
 Misc :
 ALS Vial : 51 Sample Multiplier: 1

Instrument :
 ECD_D
 ClientSampleID :
 BF5C2DL

Integration File signal 1: autoint1.e
 Integration File signal 2: autoint2.e
 Quant Time: Apr 03 01:30:01 2019
 Quant Method : Z:\pestpcbsrv\HPCHEM1\ECD_D\Method\PD040219CLP.M
 Quant Title : GC Extractables
 QLast Update : Mon Apr 01 19:09:32 2019
 Response via : Initial Calibration
 Integrator: ChemStation 6890 Scale Mode: Large solvent peaks clipped

Volume Inj. : 1 µl
 Signal #1 Phase : ZB-MR2 Signal #2 Phase: ZB-MR1
 Signal #1 Info : 30M x 0.32mm x0.2 Signal #2 Info : 30M x 0.32mm x 0.50µm

Compound	RT#1	RT#2	Resp#1	Resp#2	ng/ml	ng/ml

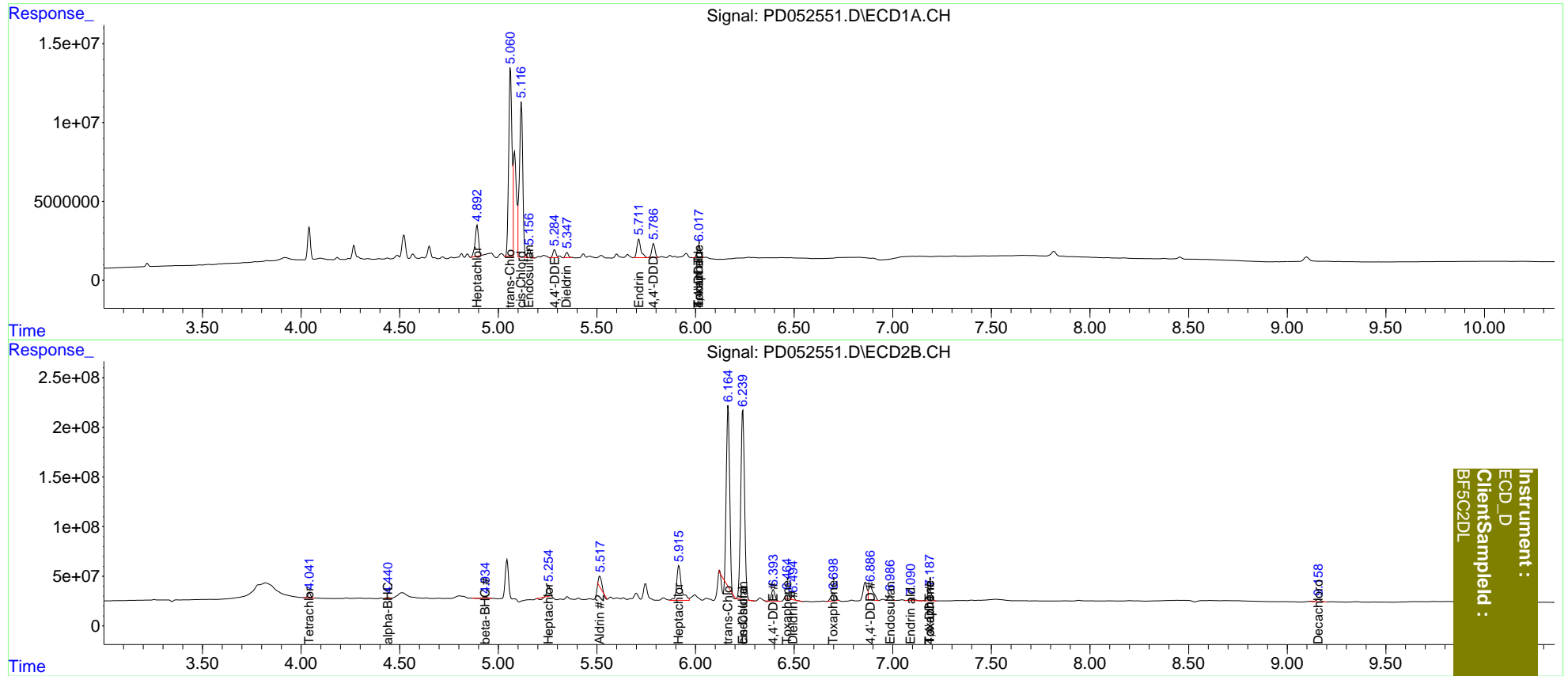
System Monitoring Compounds						
1) SA Tetrachlo...	0.000	4.043	0	49411094	N.D.	1.546
2) SA Decachlor...	0.000	9.159	0	36185630	N.D.	1.861
Target Compounds						
2) A alpha-BHC	0.000	4.442	0	11150648	N.D.	0.231
4) MA Heptachlor	0.000	5.256	0	95579684	N.D.	2.150
5) MB Aldrin	0.000	5.515f	0	119.4E6	N.D.	2.852
6) B beta-BHC	0.000	4.935f	0	12574947	N.D.	0.606
8) B Heptachlo...	4.893f	5.916	23583756	595.3E6	11.716	15.616 #
9) A Endosulfan I	5.157	6.240f	6220826	2582.5E6	3.293	74.626 #
10) B trans-Chl...	5.062	6.166	137.1E6	2007.1E6	66.632	53.085
11) B cis-Chlor...	5.118	6.240	119.1E6	2582.5E6	59.314	71.488
12) B 4,4'-DDE	5.286	6.395	5271780	138.7E6	2.627	4.066 #
13) MA Dieldrin	5.349f	6.495f	3281500	35455725	1.562	1.026 #
14) MA Endrin	5.713f	6.792	16105866	-8934998	8.575	N.D. #
15) B Endosulfa...	0.000	6.988	0	71740666	N.D.	2.519
16) A 4,4'-DDD	5.788	6.888	9952367	241.2E6	6.216	9.055 #
17) MA 4,4'-DDT	6.018	7.188	9102478	156.6E6	5.729	6.815
18) B Endrin al...	6.018f	7.091	9102478	28759297	6.076	1.233 #
22) Toxaphene-1	0.000	6.465	0	63658098	N.D.	410.360
23) Toxaphene-2	0.000	6.700	0	117.9E6	N.D.	389.694
24) Toxaphene-3	6.018	7.188	9102478	156.6E6	263.898	626.338 #
25) Toxaphene-4	0.000	7.188	0	156.6E6	N.D.	226.340

(f)=RT Delta > 1/2 Window (#)=Amounts differ by > 25% (m)=manual int.

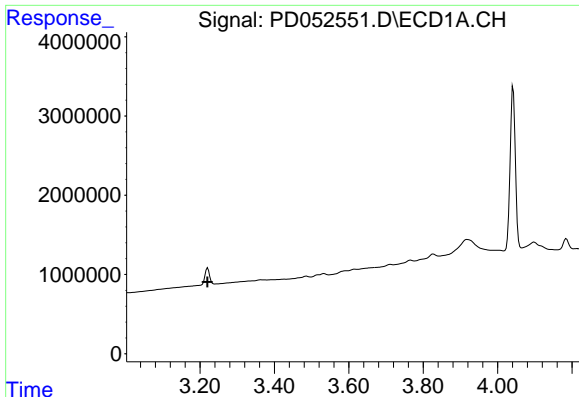
Data Path : Z:\pestpcbsrv\HPCHEM1\ECD_D\Data\PD040419\
 Data File : PD052551.D
 Signal(s) : Signal #1: ECD1A.CH Signal #2: ECD2B.CH
 Acq On : 02 Apr 2019 23:43
 Operator : AJ\SJ
 Sample : K2119-07DL 10X
 Misc :
 ALS Vial : 51 Sample Multiplier: 1

Integration File signal 1: autoint1.e
 Integration File signal 2: autoint2.e
 Quant Time: Apr 03 01:30:01 2019
 Quant Method : Z:\pestpcbsrv\HPCHEM1\ECD_D\Method\PD040219CLP.M
 Quant Title : GC Extractables
 QLast Update : Mon Apr 01 19:09:32 2019
 Response via : Initial Calibration
 Integrator: ChemStation 6890 Scale Mode: Large solvent peaks clipped

Volume Inj. : 1 µl
 Signal #1 Phase : ZB-MR2 Signal #2 Phase: ZB-MR1
 Signal #1 Info : 30M x 0.32mm x0.2 Signal #2 Info : 30M x 0.32mm x 0.50µm



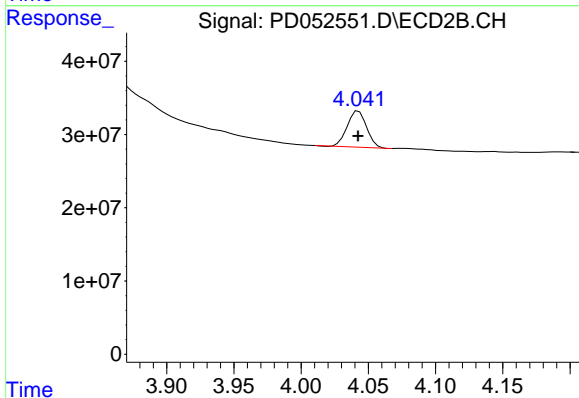
Instrument :
 ECD_D
 ClientSampleId :
 BF5C2DL



#1 Tetrachloro-m-xylene

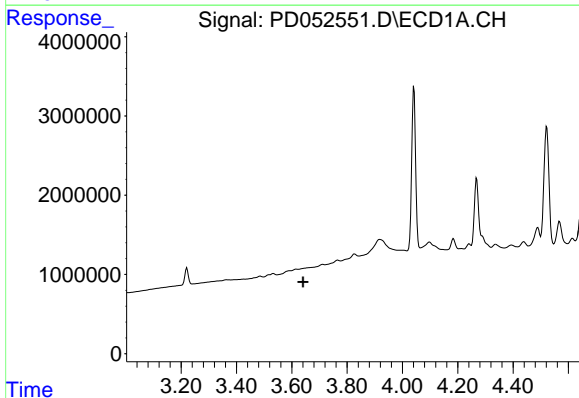
R.T.: 0.000 min
 Exp R.T. : 3.220 min
 Response: 0
 Conc: N.D.

Instrument :
 ECD_D
 ClientSampleId :
 BF5C2DL



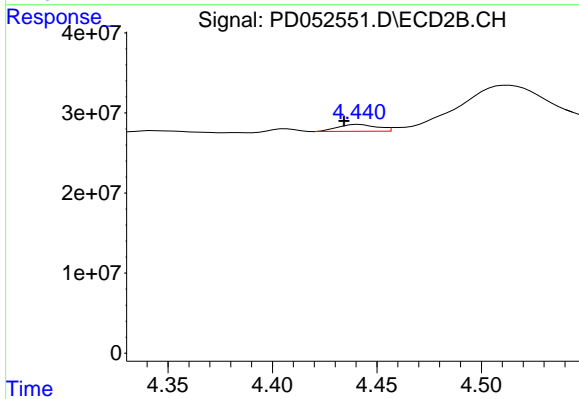
#1 Tetrachloro-m-xylene

R.T.: 4.043 min
 Delta R.T.: 0.000 min
 Response: 49411094
 Conc: 1.55 ng/ml



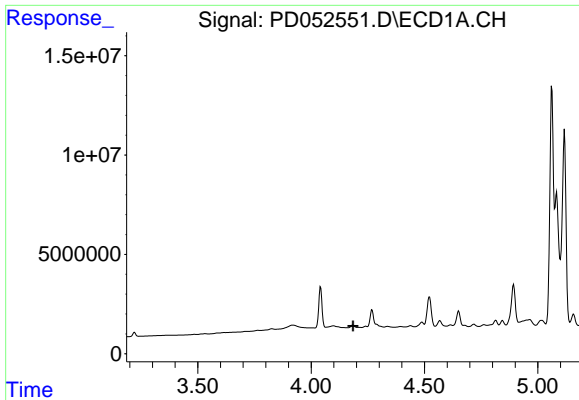
#2 alpha-BHC

R.T.: 0.000 min
 Exp R.T. : 3.640 min
 Response: 0
 Conc: N.D.



#2 alpha-BHC

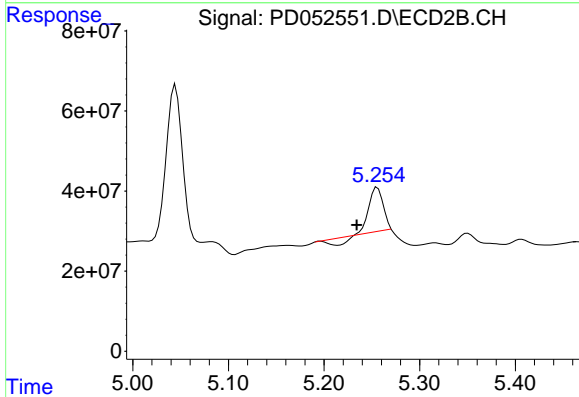
R.T.: 4.442 min
 Delta R.T.: 0.007 min
 Response: 11150648
 Conc: 0.23 ng/ml



#4 Heptachlor

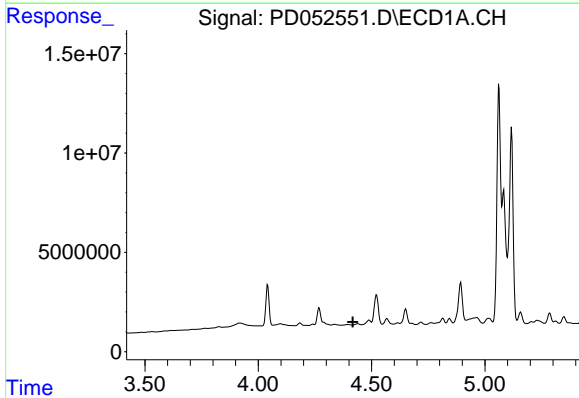
R.T.: 0.000 min
 Exp R.T.: 4.185 min
 Response: 0
 Conc: N.D.

Instrument :
 ECD_D
 ClientSampled :
 BF5C2DL



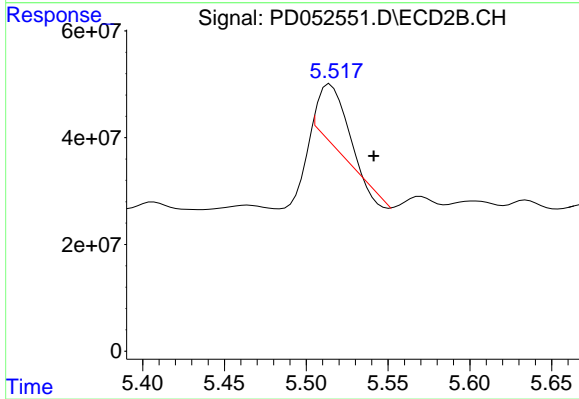
#4 Heptachlor

R.T.: 5.256 min
 Delta R.T.: 0.021 min
 Response: 95579684
 Conc: 2.15 ng/ml



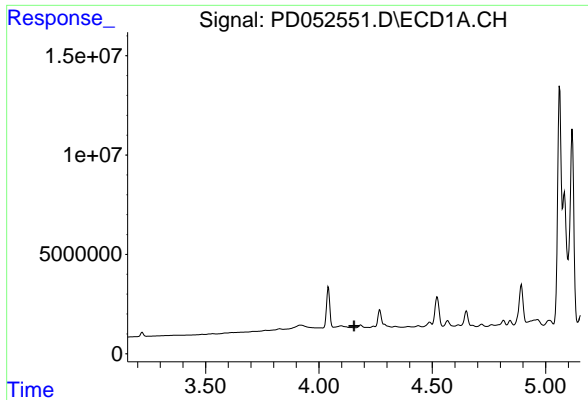
#5 Aldrin

R.T.: 0.000 min
 Exp R.T.: 4.417 min
 Response: 0
 Conc: N.D.



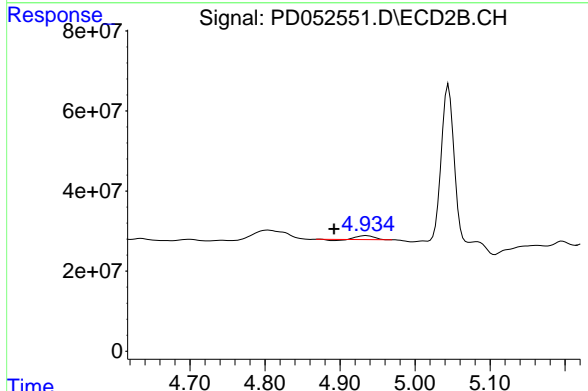
#5 Aldrin

R.T.: 5.515 min
 Delta R.T.: -0.027 min
 Response: 119404438
 Conc: 2.85 ng/ml

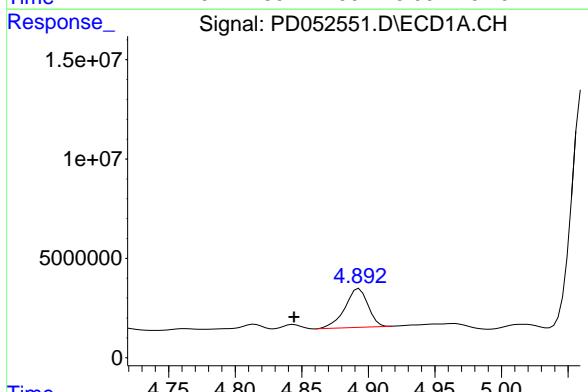


#6 beta-BHC
 R.T.: 0.000 min
 Exp R.T.: 4.155 min
 Response: 0
 Conc: N.D.

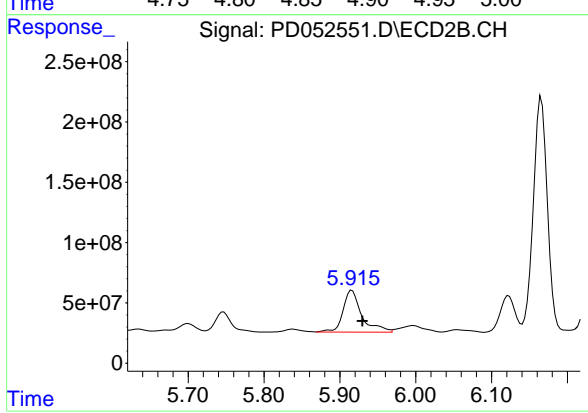
Instrument :
 ECD_D
 ClientSampled :
 BF5C2DL



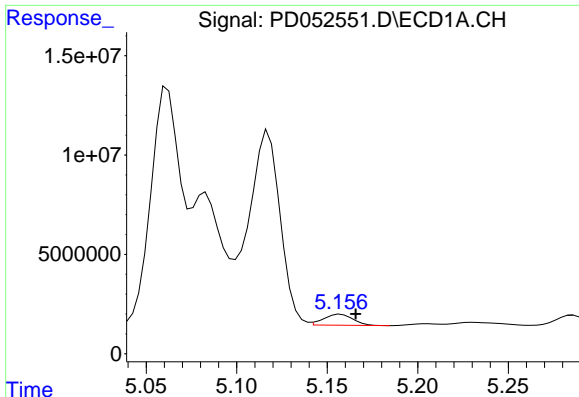
#6 beta-BHC
 R.T.: 4.935 min
 Delta R.T.: 0.043 min
 Response: 12574947
 Conc: 0.61 ng/ml



#8 Heptachlor epoxide
 R.T.: 4.893 min
 Delta R.T.: 0.049 min
 Response: 23583756
 Conc: 11.72 ng/ml



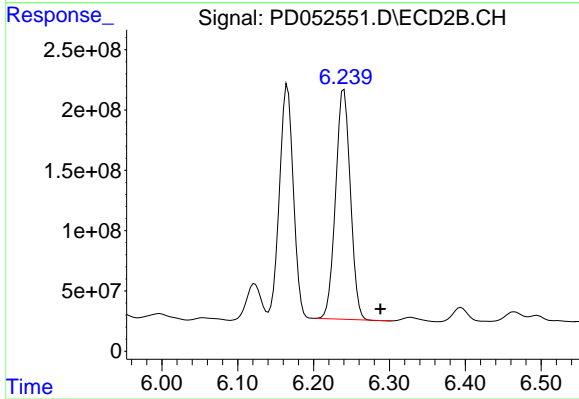
#8 Heptachlor epoxide
 R.T.: 5.916 min
 Delta R.T.: -0.014 min
 Response: 595256190
 Conc: 15.62 ng/ml



#9 Endosulfan I

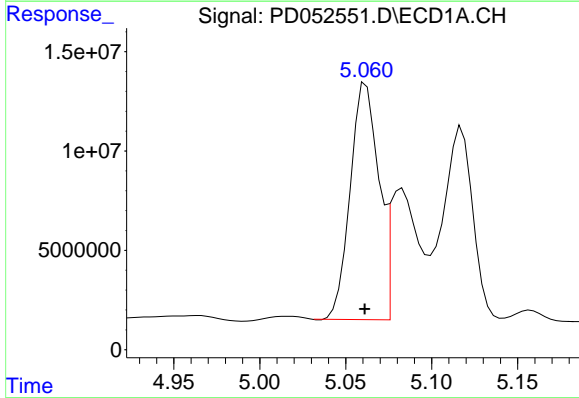
R.T.: 5.157 min
 Delta R.T.: -0.008 min
 Response: 6220826
 Conc: 3.29 ng/ml

Instrument :
 ECD_D
 ClientSampleId :
 BF5C2DL



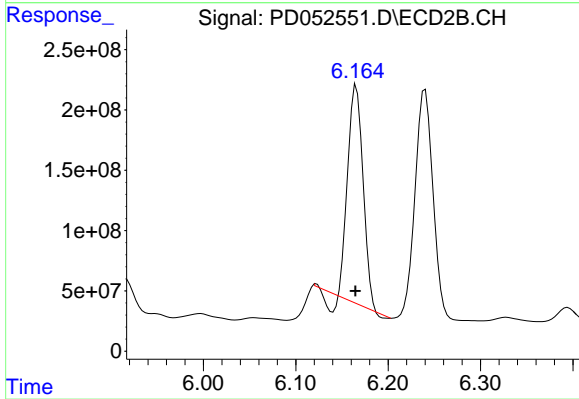
#9 Endosulfan I

R.T.: 6.240 min
 Delta R.T.: -0.048 min
 Response: 2582518875
 Conc: 74.63 ng/ml



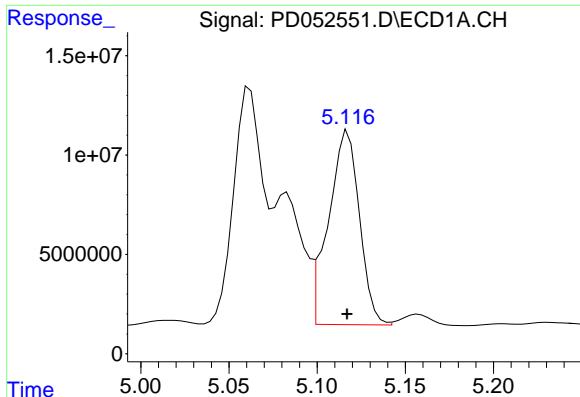
#10 trans-Chlordane

R.T.: 5.062 min
 Delta R.T.: 0.000 min
 Response: 137104096
 Conc: 66.63 ng/ml



#10 trans-Chlordane

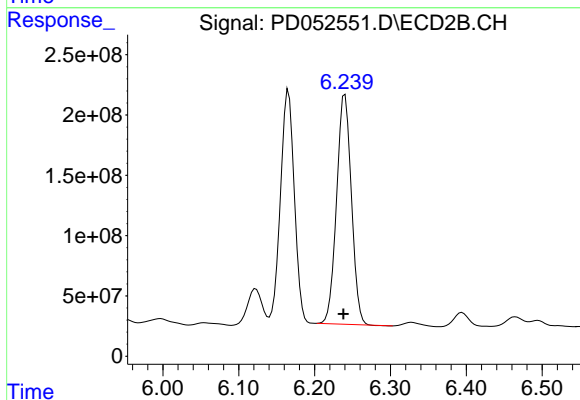
R.T.: 6.166 min
 Delta R.T.: 0.001 min
 Response: 2007076926
 Conc: 53.09 ng/ml



#11 cis-Chlordane

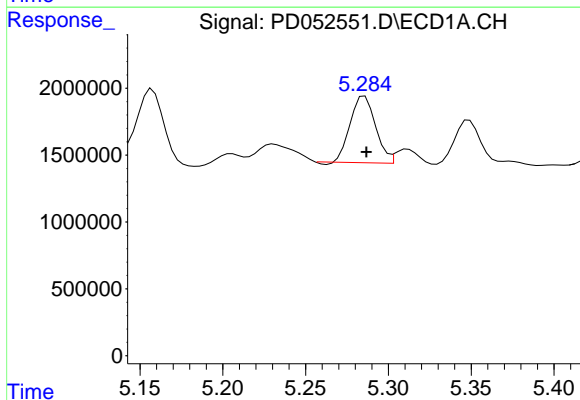
R.T.: 5.118 min
Delta R.T.: 0.000 min
Response: 119089337
Conc: 59.31 ng/ml

Instrument :
ECD_D
ClientSampleId :
BF5C2DL



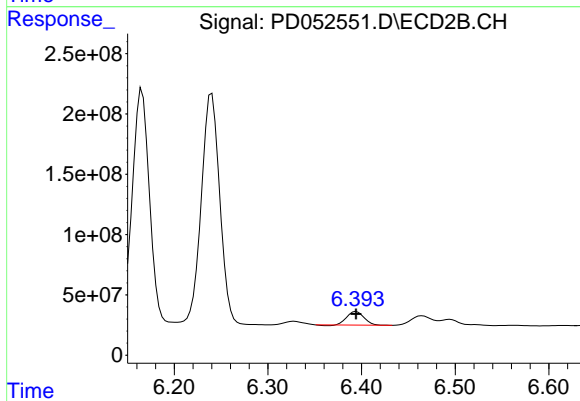
#11 cis-Chlordane

R.T.: 6.240 min
Delta R.T.: 0.002 min
Response: 2582518875
Conc: 71.49 ng/ml



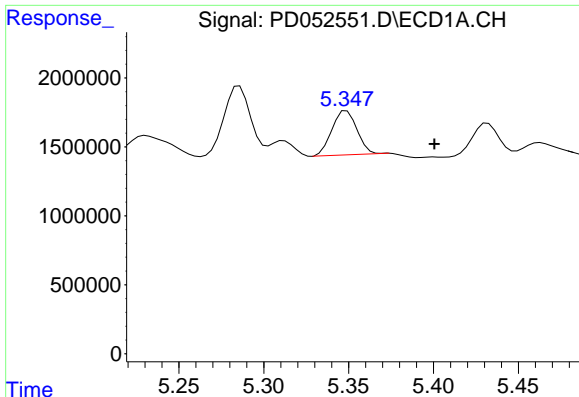
#12 4,4'-DDE

R.T.: 5.286 min
Delta R.T.: -0.001 min
Response: 5271780
Conc: 2.63 ng/ml



#12 4,4'-DDE

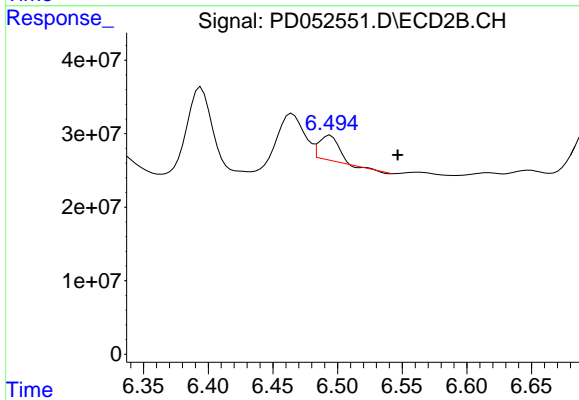
R.T.: 6.395 min
Delta R.T.: 0.000 min
Response: 138747378
Conc: 4.07 ng/ml



#13 Dieldrin

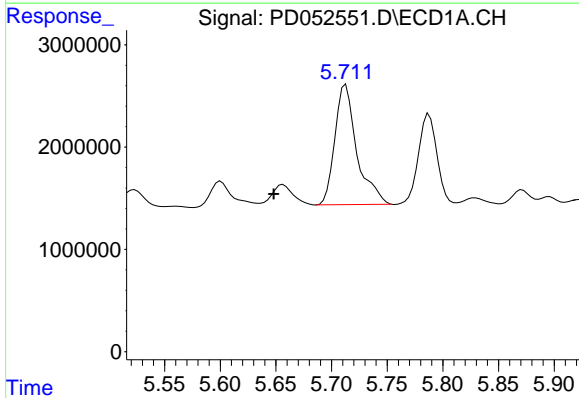
R.T.: 5.349 min
 Delta R.T.: -0.052 min
 Response: 3281500
 Conc: 1.56 ng/ml

Instrument :
 ECD_D
 ClientSampled :
 BF5C2DL



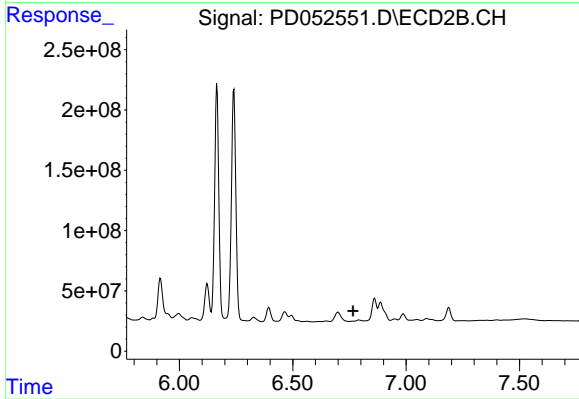
#13 Dieldrin

R.T.: 6.495 min
 Delta R.T.: -0.052 min
 Response: 35455725
 Conc: 1.03 ng/ml



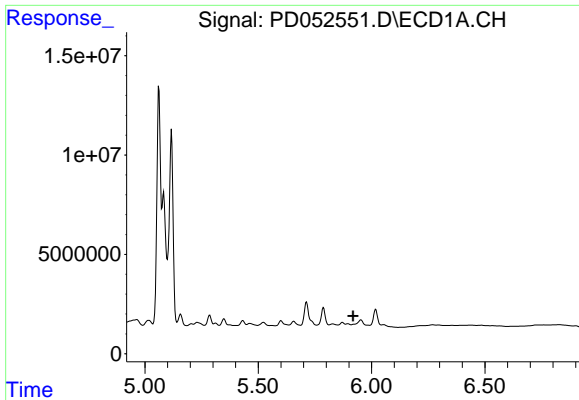
#14 Endrin

R.T.: 5.713 min
 Delta R.T.: 0.065 min
 Response: 16105866
 Conc: 8.57 ng/ml



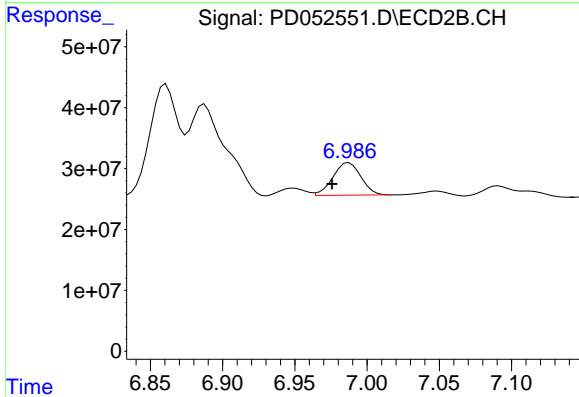
#14 Endrin

R.T.: 6.792 min
 Delta R.T.: 0.026 min
 Response: -8934998
 Conc: N.D.

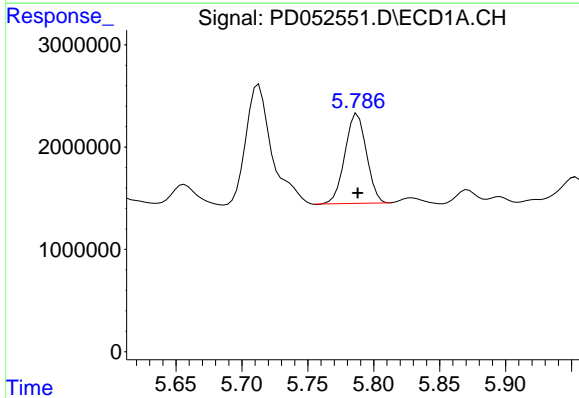


#15 Endosulfan II
 R.T.: 0.000 min
 Exp R.T.: 5.918 min
 Response: 0
 Conc: N.D.

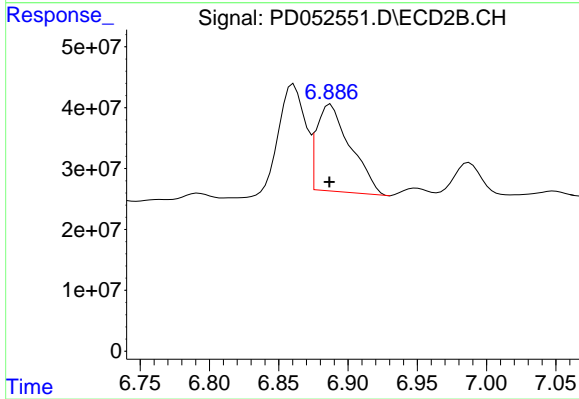
Instrument :
 ECD_D
 ClientSampleId :
 BF5C2DL



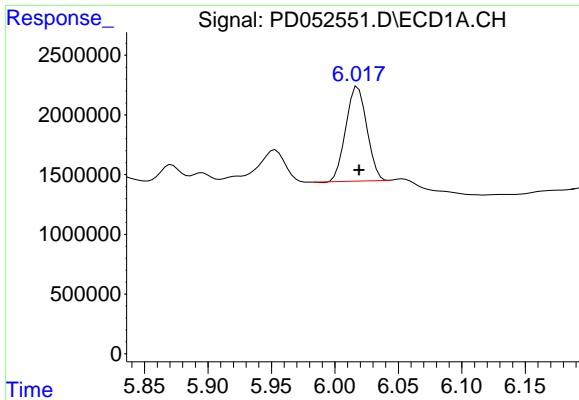
#15 Endosulfan II
 R.T.: 6.988 min
 Delta R.T.: 0.012 min
 Response: 71740666
 Conc: 2.52 ng/ml



#16 4,4'-DDD
 R.T.: 5.788 min
 Delta R.T.: 0.000 min
 Response: 9952367
 Conc: 6.22 ng/ml

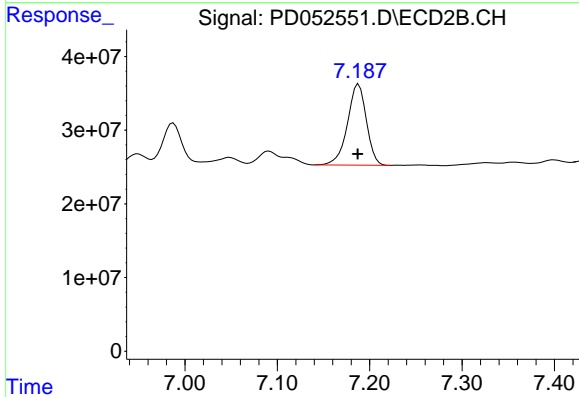


#16 4,4'-DDD
 R.T.: 6.888 min
 Delta R.T.: 0.000 min
 Response: 241186126
 Conc: 9.06 ng/ml

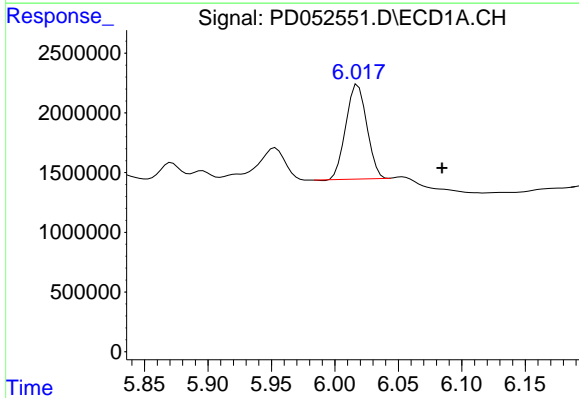


#17 4,4'-DDT
 R.T.: 6.018 min
 Delta R.T.: -0.001 min
 Response: 9102478
 Conc: 5.73 ng/ml

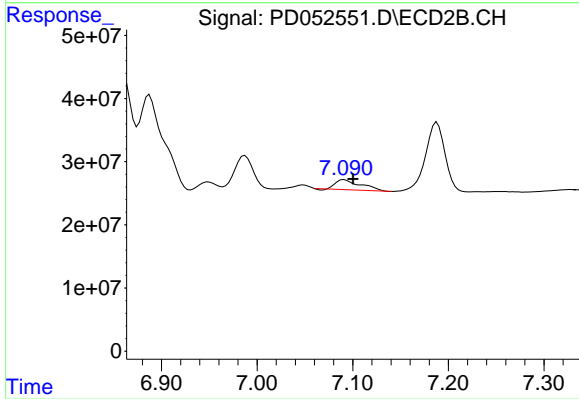
Instrument :
 ECD_D
 ClientSampleId :
 BF5C2DL



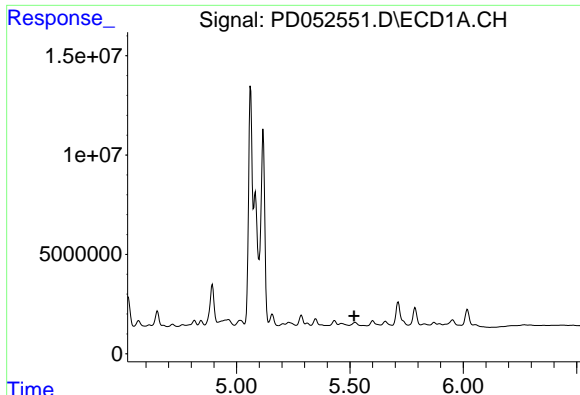
#17 4,4'-DDT
 R.T.: 7.188 min
 Delta R.T.: 0.001 min
 Response: 156627364
 Conc: 6.82 ng/ml



#18 Endrin aldehyde
 R.T.: 6.018 min
 Delta R.T.: -0.066 min
 Response: 9102478
 Conc: 6.08 ng/ml



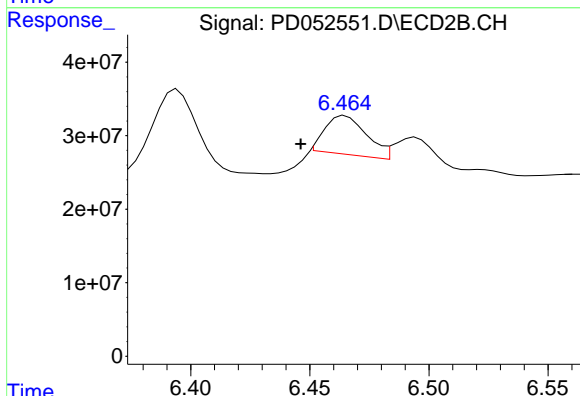
#18 Endrin aldehyde
 R.T.: 7.091 min
 Delta R.T.: -0.009 min
 Response: 28759297
 Conc: 1.23 ng/ml



#22 Toxaphene-1

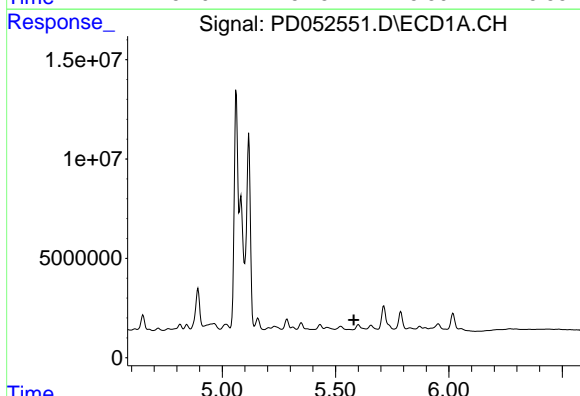
R.T.: 0.000 min
 Exp R.T. : 5.518 min
 Response: 0
 Conc: N.D.

Instrument :
 ECD_D
 ClientSampleId :
 BF5C2DL



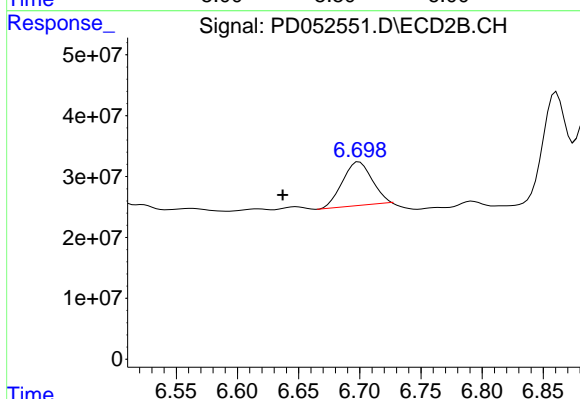
#22 Toxaphene-1

R.T.: 6.465 min
 Delta R.T.: 0.019 min
 Response: 63658098
 Conc: 410.36 ng/ml



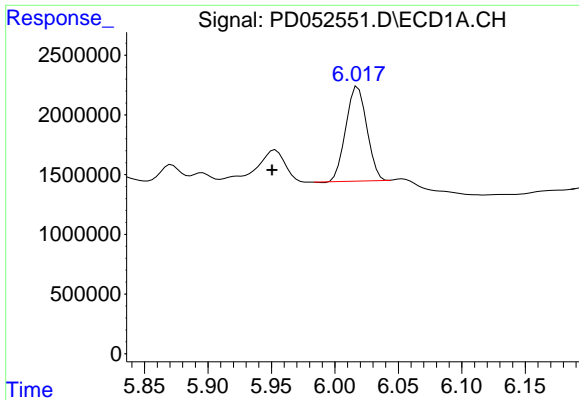
#23 Toxaphene-2

R.T.: 0.000 min
 Exp R.T. : 5.581 min
 Response: 0
 Conc: N.D.



#23 Toxaphene-2

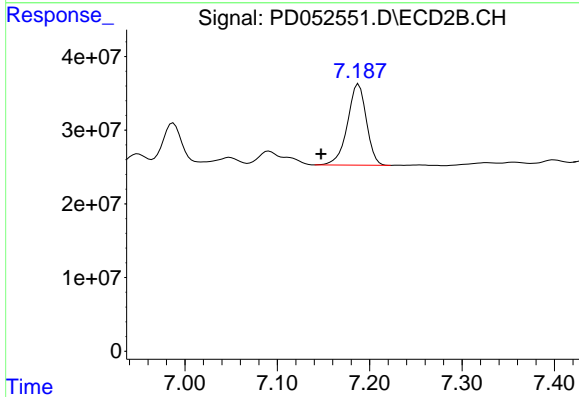
R.T.: 6.700 min
 Delta R.T.: 0.063 min
 Response: 117896455
 Conc: 389.69 ng/ml



#24 Toxaphene-3

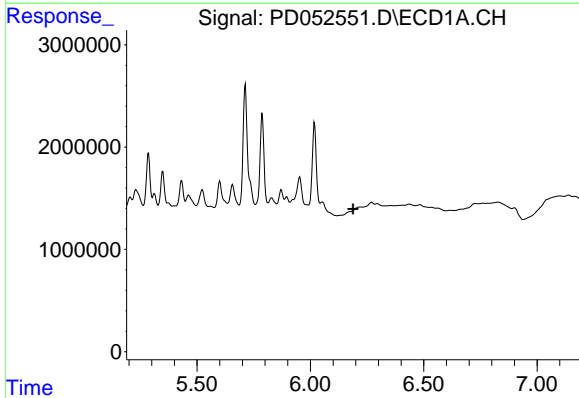
R.T.: 6.018 min
 Delta R.T.: 0.068 min
 Response: 9102478
 Conc: 263.90 ng/ml

Instrument :
 ECD_D
 ClientSampleId :
 BF5C2DL



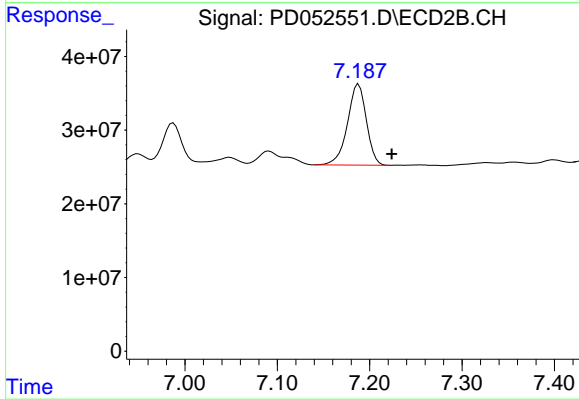
#24 Toxaphene-3

R.T.: 7.188 min
 Delta R.T.: 0.041 min
 Response: 156627364
 Conc: 626.34 ng/ml



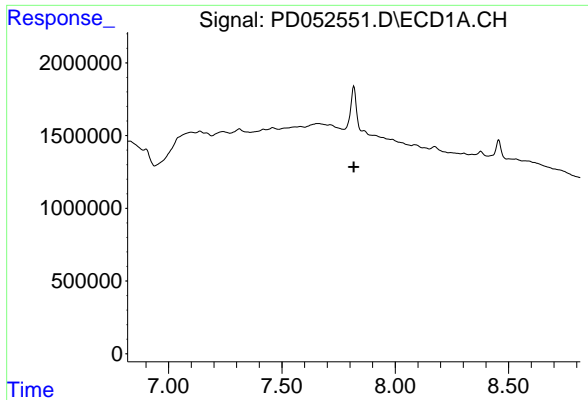
#25 Toxaphene-4

R.T.: 0.000 min
 Exp R.T. : 6.189 min
 Response: 0
 Conc: N.D.



#25 Toxaphene-4

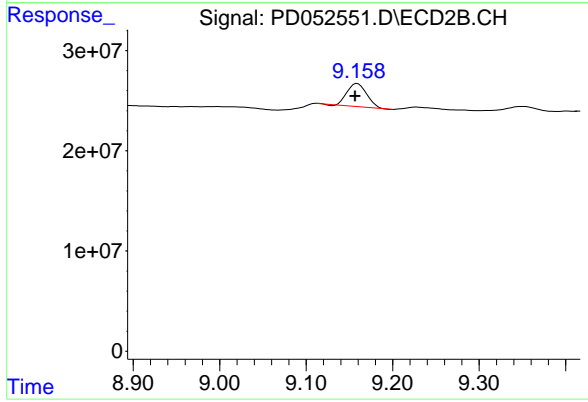
R.T.: 7.188 min
 Delta R.T.: -0.035 min
 Response: 156627364
 Conc: 226.34 ng/ml



#27 Decachlorobiphenyl

R.T.: 0.000 min
Exp R.T.: 7.817 min
Response: 0
Conc: N.D.

Instrument :
ECD_D
ClientSampled :
BF5C2DL



#27 Decachlorobiphenyl

R.T.: 9.159 min
Delta R.T.: 0.003 min
Response: 36185630
Conc: 1.86 ng/ml