

Data Path : Z:\pestpcbsrv\HPCHEM1\ECD_D\Data\PD040419\
 Data File : PD052579.D
 Signal(s) : Signal #1: ECD1A.CH Signal #2: ECD2B.CH
 Acq On : 03 Apr 2019 6:21
 Operator : AJ\SJ
 Sample : K2168-08
 Misc :
 ALS Vial : 71 Sample Multiplier: 1

Instrument :
 ECD_D
 ClientSampleId :
 BF673

Integration File signal 1: autoint1.e
 Integration File signal 2: autoint2.e
 Quant Time: Apr 03 07:11:23 2019
 Quant Method : Z:\pestpcbsrv\HPCHEM1\ECD_D\Method\PD040219CLP.M
 Quant Title : GC Extractables
 QLast Update : Mon Apr 01 19:09:32 2019
 Response via : Initial Calibration
 Integrator: ChemStation 6890 Scale Mode: Large solvent peaks clipped

Volume Inj. : 1 µl
 Signal #1 Phase : ZB-MR2 Signal #2 Phase: ZB-MR1
 Signal #1 Info : 30M x 0.32mm x0.2 Signal #2 Info : 30M x 0.32mm x 0.50µm

Compound	RT#1	RT#2	Resp#1	Resp#2	ng/ml	ng/ml

System Monitoring Compounds						
1) SA Tetrachlo...	3.221	4.043	25677548	537.7E6	18.103	16.826
27) SA Decachlor...	7.817	9.160	43049971	541.4E6	28.656	27.850

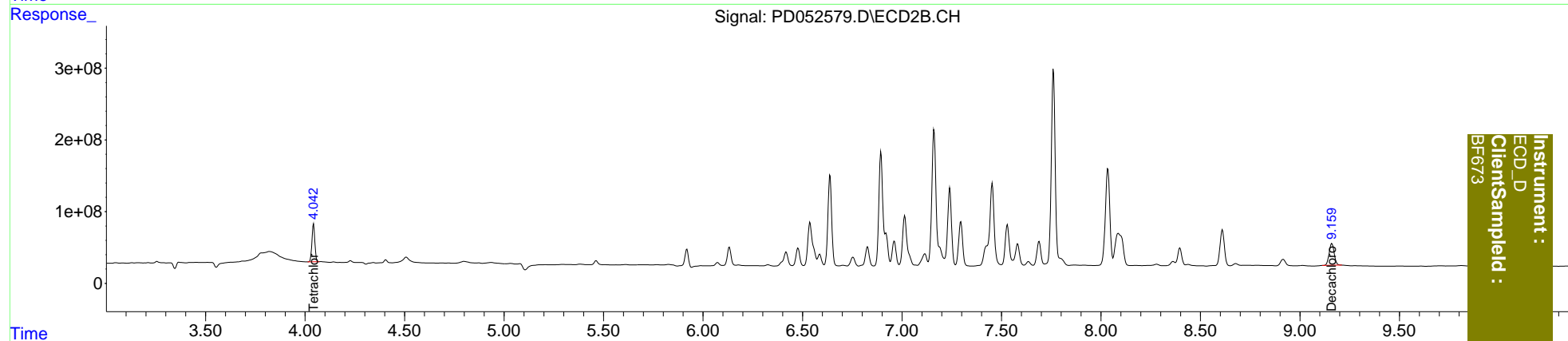
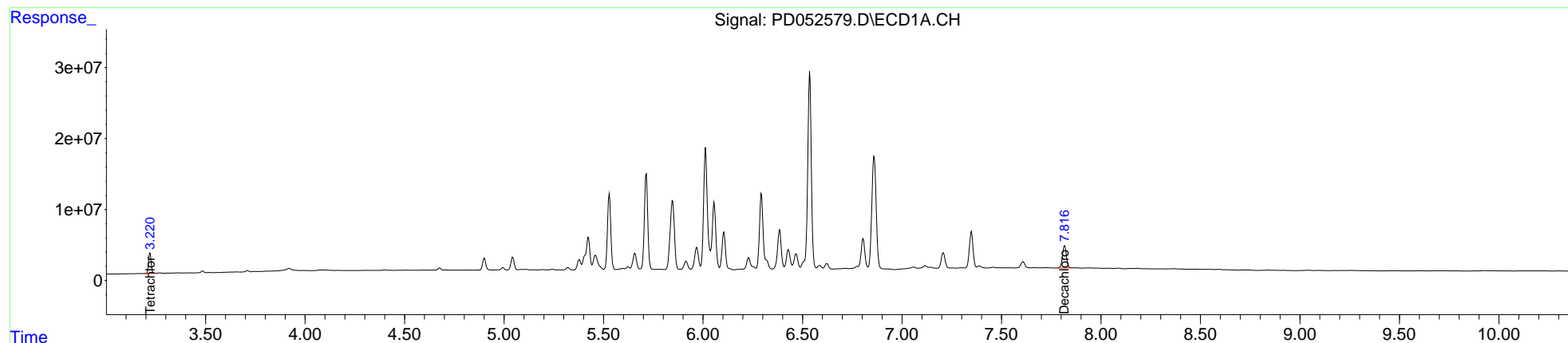
Target Compounds

 (f)=RT Delta > 1/2 Window (#)=Amounts differ by > 25% (m)=manual int.

Data Path : Z:\pestpcbsrv\HPCHEM1\ECD_D\Data\PD040419\
 Data File : PD052579.D
 Signal(s) : Signal #1: ECD1A.CH Signal #2: ECD2B.CH
 Acq On : 03 Apr 2019 6:21
 Operator : AJ\SJ
 Sample : K2168-08
 Misc :
 ALS Vial : 71 Sample Multiplier: 1

Integration File signal 1: autoint1.e
 Integration File signal 2: autoint2.e
 Quant Time: Apr 03 07:11:23 2019
 Quant Method : Z:\pestpcbsrv\HPCHEM1\ECD_D\Method\PD040219CLP.M
 Quant Title : GC Extractables
 QLast Update : Mon Apr 01 19:09:32 2019
 Response via : Initial Calibration
 Integrator: ChemStation 6890 Scale Mode: Large solvent peaks clipped

Volume Inj. : 1 µl
 Signal #1 Phase : ZB-MR2 Signal #2 Phase: ZB-MR1
 Signal #1 Info : 30M x 0.32mm x0.2 Signal #2 Info : 30M x 0.32mm x 0.50µm



Instrument :
 ECD_D
 ClientSampleId :
 BF673