

Data Path : Z:\pestpcbsrv\HPCHEM1\ECD\_D\Data\PD040419\  
 Data File : PD052551.D  
 Signal(s) : Signal #1: ECD1A.CH Signal #2: ECD2B.CH  
 Acq On : 02 Apr 2019 23:43  
 Operator : AJ\SJ  
 Sample : K2119-07DL 10X  
 Misc :  
 ALS Vial : 51 Sample Multiplier: 1

**Instrument :**  
 ECD\_D  
**ClientSampleID :**  
 BF5C2DL

**Manual Integrations**  
**APPROVED**  
 Sohil  
 4/4/2019 5:18:00 PM

Integration File signal 1: autoint1.e  
 Integration File signal 2: autoint2.e  
 Quant Time: Apr 03 01:30:01 2019  
 Quant Method : Z:\pestpcbsrv\HPCHEM1\ECD\_D\Method\PD040219CLP.M  
 Quant Title : GC Extractables  
 QLast Update : Mon Apr 01 19:09:32 2019  
 Response via : Initial Calibration  
 Integrator: ChemStation 6890 Scale Mode: Large solvent peaks clipped

Volume Inj. : 1 µl  
 Signal #1 Phase : ZB-MR2 Signal #2 Phase: ZB-MR1  
 Signal #1 Info : 30M x 0.32mm x0.2 Signal #2 Info : 30M x 0.32mm x 0.50µm

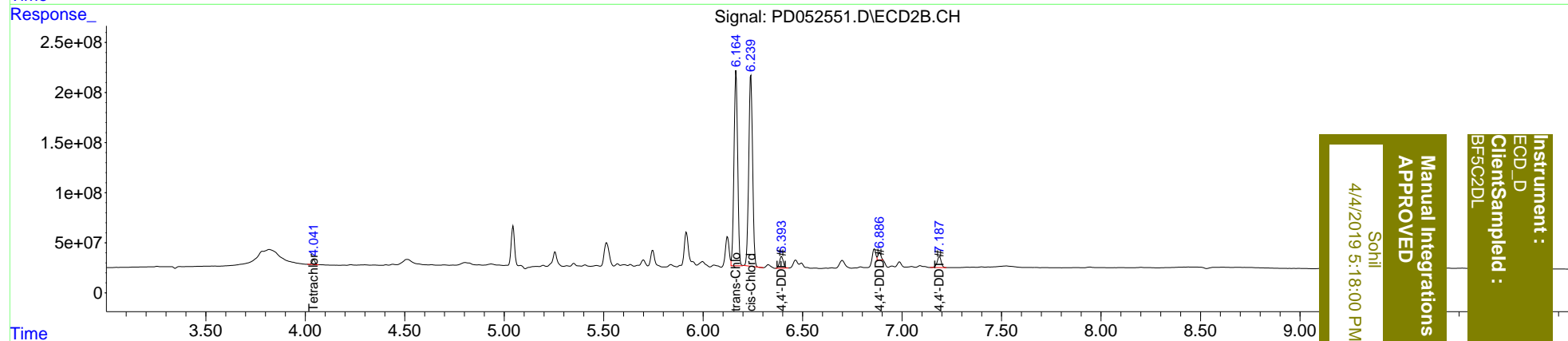
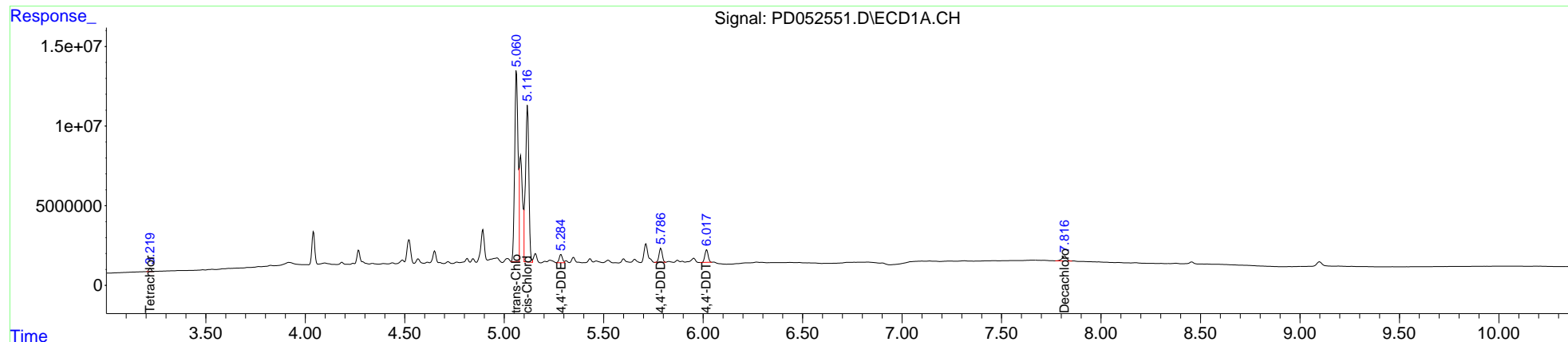
Compound	RT#1	RT#2	Resp#1	Resp#2	ng/ml	ng/ml
-----						
System Monitoring Compounds						
1) SA Tetrachlo...	3.219	4.043	1893448	49411094	1.335m	1.546
27) SA Decachlor...	7.816	9.158	5114461	46455970	3.404m	2.390m#
Target Compounds						
10) B trans-Chl...	5.060	6.164	154.8E6	2460.0E6	75.251m	65.064m
11) B cis-Chlor...	5.118	6.240	119.1E6	2582.5E6	59.314	71.488
12) B 4,4'-DDE	5.284	6.393	5986384	156.3E6	2.983m	4.582m#
16) A 4,4'-DDD	5.788	6.886	9952367	78596977	6.216	2.951m#
17) MA 4,4'-DDT	6.018	7.188	9102478	156.6E6	5.729	6.815
-----						

(f)=RT Delta > 1/2 Window (#)=Amounts differ by > 25% (m)=manual int.

Data Path : Z:\pestpcbsrv\HPCHEM1\ECD\_D\Data\PD040419\  
 Data File : PD052551.D  
 Signal(s) : Signal #1: ECD1A.CH Signal #2: ECD2B.CH  
 Acq On : 02 Apr 2019 23:43  
 Operator : AJ\SJ  
 Sample : K2119-07DL 10X  
 Misc :  
 ALS Vial : 51 Sample Multiplier: 1

Integration File signal 1: autoint1.e  
 Integration File signal 2: autoint2.e  
 Quant Time: Apr 03 01:30:01 2019  
 Quant Method : Z:\pestpcbsrv\HPCHEM1\ECD\_D\Method\PD040219CLP.M  
 Quant Title : GC Extractables  
 QLast Update : Mon Apr 01 19:09:32 2019  
 Response via : Initial Calibration  
 Integrator: ChemStation 6890 Scale Mode: Large solvent peaks clipped

Volume Inj. : 1 µl  
 Signal #1 Phase : ZB-MR2 Signal #2 Phase: ZB-MR1  
 Signal #1 Info : 30M x 0.32mm x0.2 Signal #2 Info : 30M x 0.32mm x 0.50µm



Instrument : ECD\_D  
 Client Sample ID : BF5C2DL  
 Manual Integrations APPROVED  
 4/4/2019 5:18:00 PM  
 Sohli