

Quantitation Report (Qedit)

Data Path : Z:\pestpcbsrv\HPCHEM1\ECD_D\Data\PD040623\
Data File : PD074607.D
Signal(s) : Signal #1: ECD1A.ch Signal #2: ECD2B.ch
Acq On : 06 Apr 2023 09:31
Operator : AR\AJ
Sample : 02115-01
Misc :
ALS Vial : 4 Sample Multiplier: 1

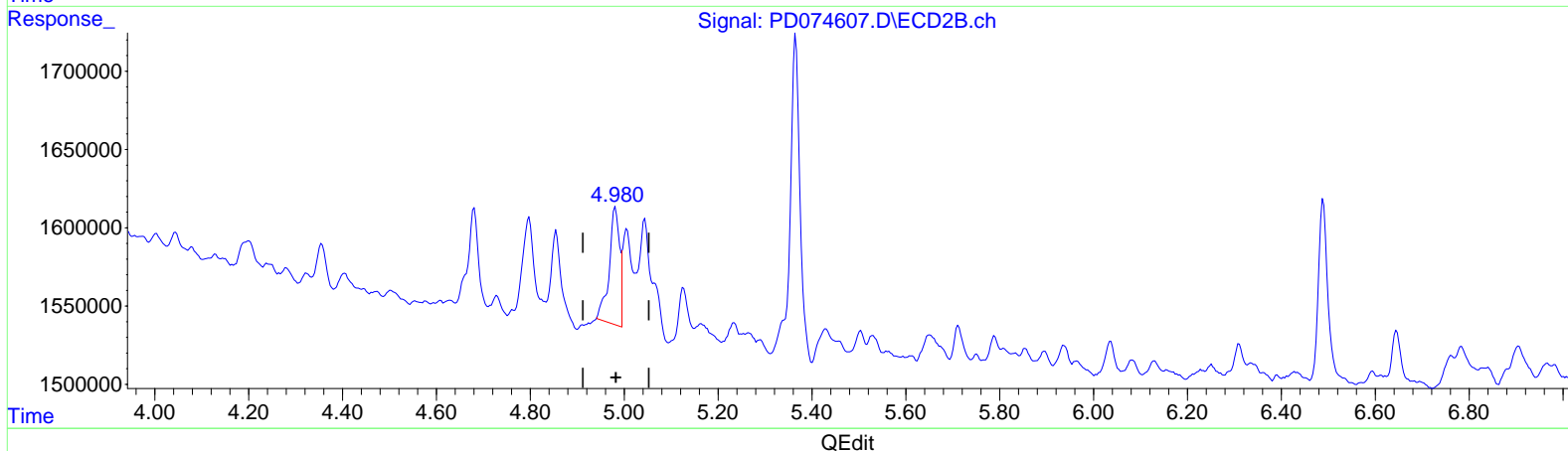
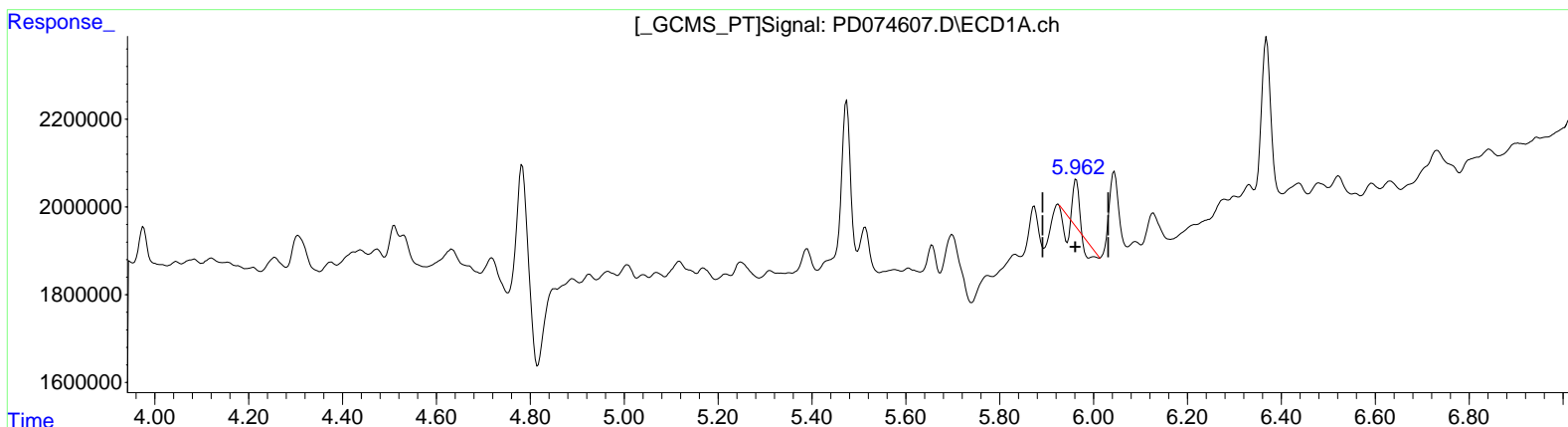
Instrument :
ECD_D
ClientSampleId :
CB988

Manual Integrations APPROVED

Reviewed By : Abdul Mirza 04/07/2023
Supervised By : Ankita Jodhani 04/07/2023

Integration File signal 1: autoint1.e
Integration File signal 2: autoint2.e
Quant Time: Apr 07 00:54:47 2023
Quant Method : Z:\pestpcbsrv\HPCHEM1\ECD_D\Method\PD031323CLP.M
Quant Title : GC Extractables
QLast Update : Tue Mar 14 03:05:06 2023
Response via : Initial Calibration
Integrator: ChemStation

Volume Inj. : 1 µl
Signal #1 Phase : ZB-MR1 Signal #2 Phase: ZB-MR2
Signal #1 Info : 30M x 0.32mm x 0.5 Signal #2 Info : 30M x 0.32mm x 0.25µm



(10) trans-Chlordane (B)
5.963min 0.017 ng/ml
response 53536

(10) trans-Chlordane #2 (B)
4.981min 0.741 ng/ml
response 1146295

Data Path : Z:\pestpcbsrv\HPCHEM1\ECD_D\Data\PD040623\
 Data File : PD074607.D
 Signal(s) : Signal #1: ECD1A.ch Signal #2: ECD2B.ch
 Acq On : 06 Apr 2023 09:31
 Operator : AR\AJ
 Sample : 02115-01
 Misc :
 ALS Vial : 4 Sample Multiplier: 1

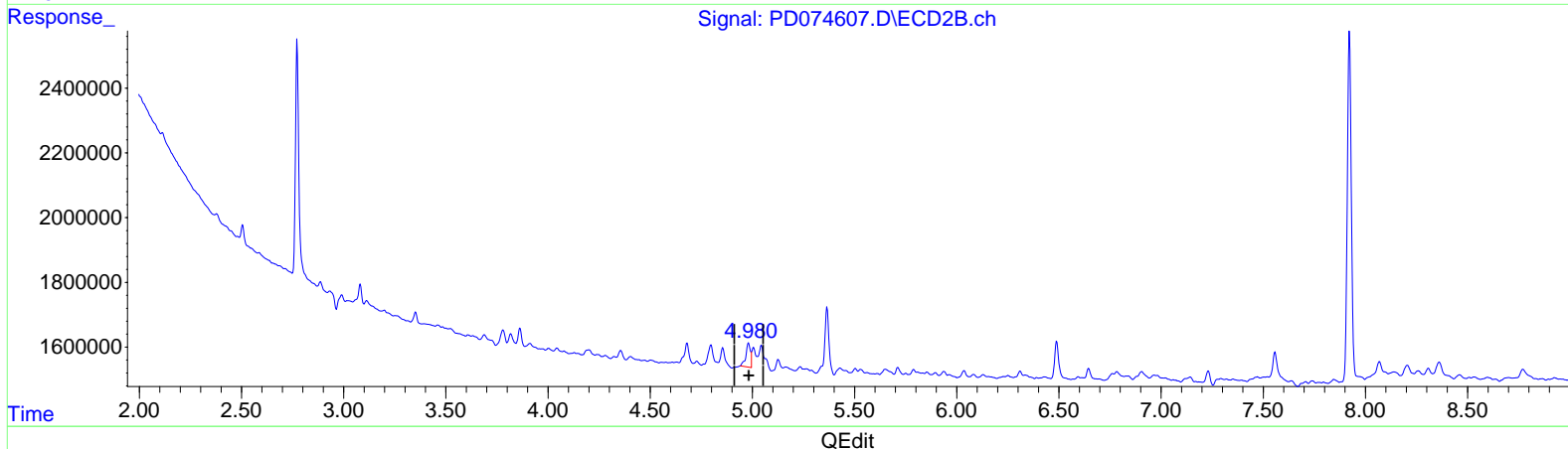
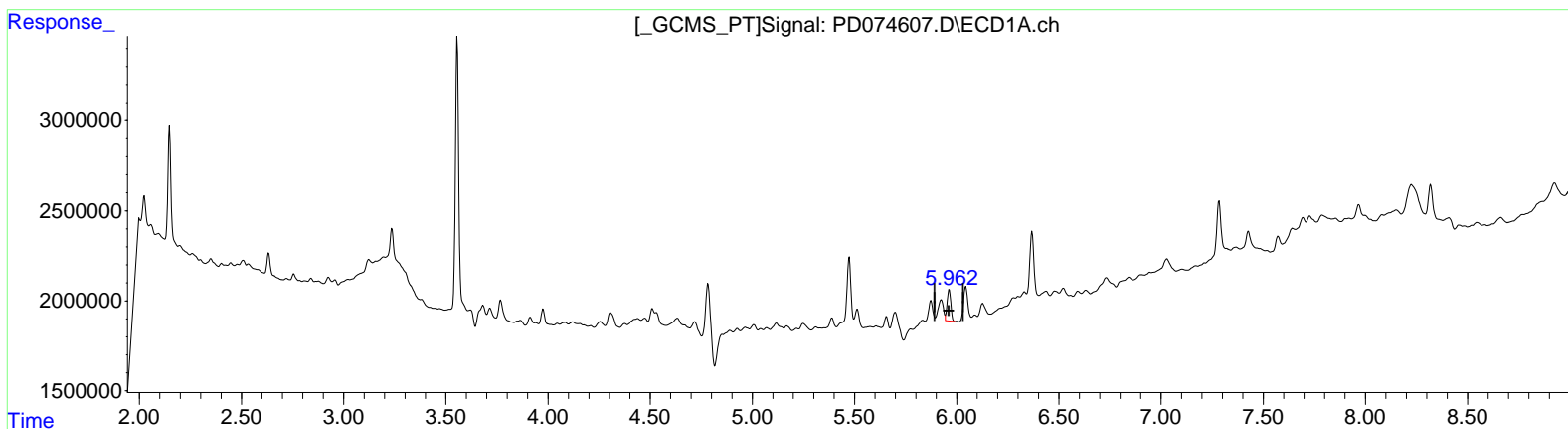
Instrument :
 ECD_D
 ClientSampleId :
 CB988

Manual Integrations APPROVED

Reviewed By : Abdul Mirza 04/07/2023
 Supervised By : Ankita Jodhani 04/07/2023

Integration File signal 1: autoint1.e
 Integration File signal 2: autoint2.e
 Quant Time: Apr 07 00:54:47 2023
 Quant Method : Z:\pestpcbsrv\HPCHEM1\ECD_D\Method\PD031323CLP.M
 Quant Title : GC Extractables
 QLast Update : Tue Mar 14 03:05:06 2023
 Response via : Initial Calibration
 Integrator: ChemStation

Volume Inj. : 1 µl
 Signal #1 Phase : ZB-MR1 Signal #2 Phase: ZB-MR2
 Signal #1 Info : 30M x 0.32mm x 0.5 Signal #2 Info : 30M x 0.32mm x 0.25µm



(10) trans-Chlordane (B)
 5.962min 0.685 ng/ml m
 response 2199166

(10) trans-Chlordane #2 (B)
 4.981min 0.741 ng/ml
 response 1146295

Quantitation Report (Qedit)

Data Path : Z:\pestpcbsrv\HPCHEM1\ECD_D\Data\PD040623\
 Data File : PD074607.D
 Signal(s) : Signal #1: ECD1A.ch Signal #2: ECD2B.ch
 Acq On : 06 Apr 2023 09:31
 Operator : AR\AJ
 Sample : 02115-01
 Misc :
 ALS Vial : 4 Sample Multiplier: 1

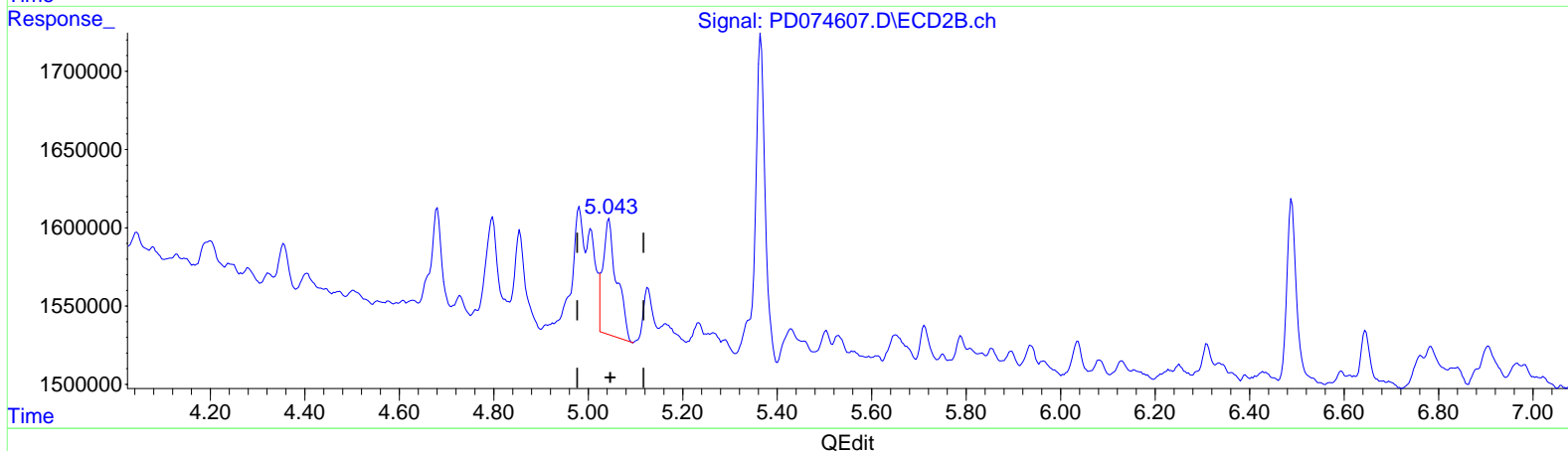
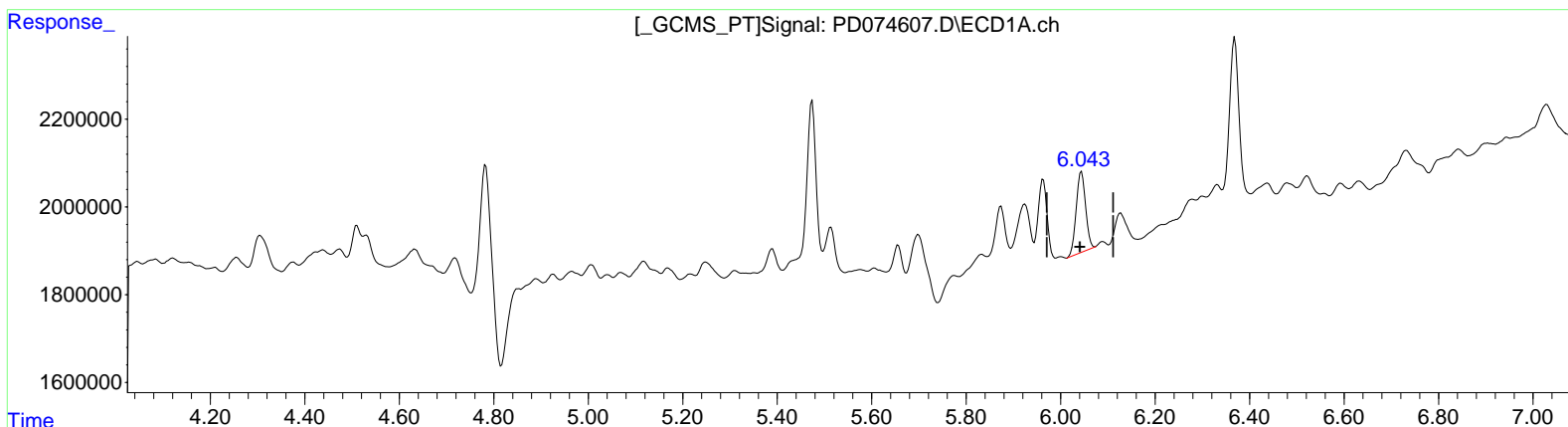
Instrument :
 ECD_D
 ClientSampleId :
 CB988

Manual Integrations APPROVED

Reviewed By : Abdul Mirza 04/07/2023
 Supervised By : Ankita Jodhani 04/07/2023

Integration File signal 1: autoint1.e
 Integration File signal 2: autoint2.e
 Quant Time: Apr 07 00:54:47 2023
 Quant Method : Z:\pestpcbsrv\HPCHEM1\ECD_D\Method\PD031323CLP.M
 Quant Title : GC Extractables
 QLast Update : Tue Mar 14 03:05:06 2023
 Response via : Initial Calibration
 Integrator: ChemStation

Volume Inj. : 1 µl
 Signal #1 Phase : ZB-MR1 Signal #2 Phase: ZB-MR2
 Signal #1 Info : 30M x 0.32mm x 0.5 Signal #2 Info : 30M x 0.32mm x 0.25µm



(11) cis-Chlordane (B)
 6.044min 0.775 ng/ml
 response 2538159

(11) cis-Chlordane #2 (B)
 5.044min 0.961 ng/ml
 response 1519800

Data Path : Z:\pestpcbsrv\HPCHEM1\ECD_D\Data\PD040623\
 Data File : PD074607.D
 Signal(s) : Signal #1: ECD1A.ch Signal #2: ECD2B.ch
 Acq On : 06 Apr 2023 09:31
 Operator : AR\AJ
 Sample : 02115-01
 Misc :
 ALS Vial : 4 Sample Multiplier: 1

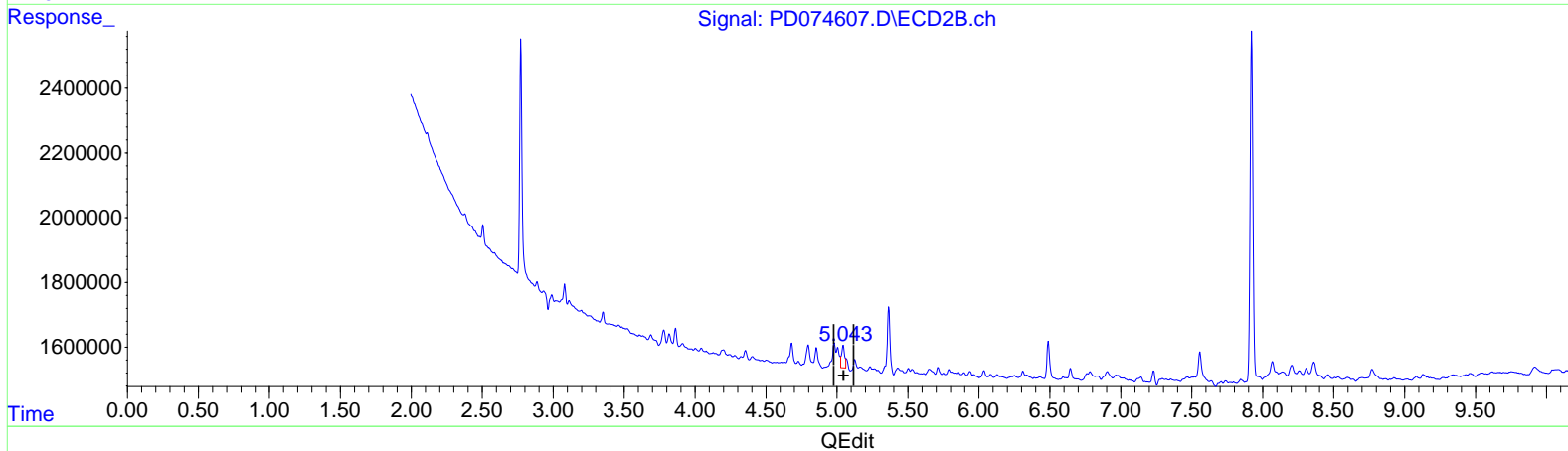
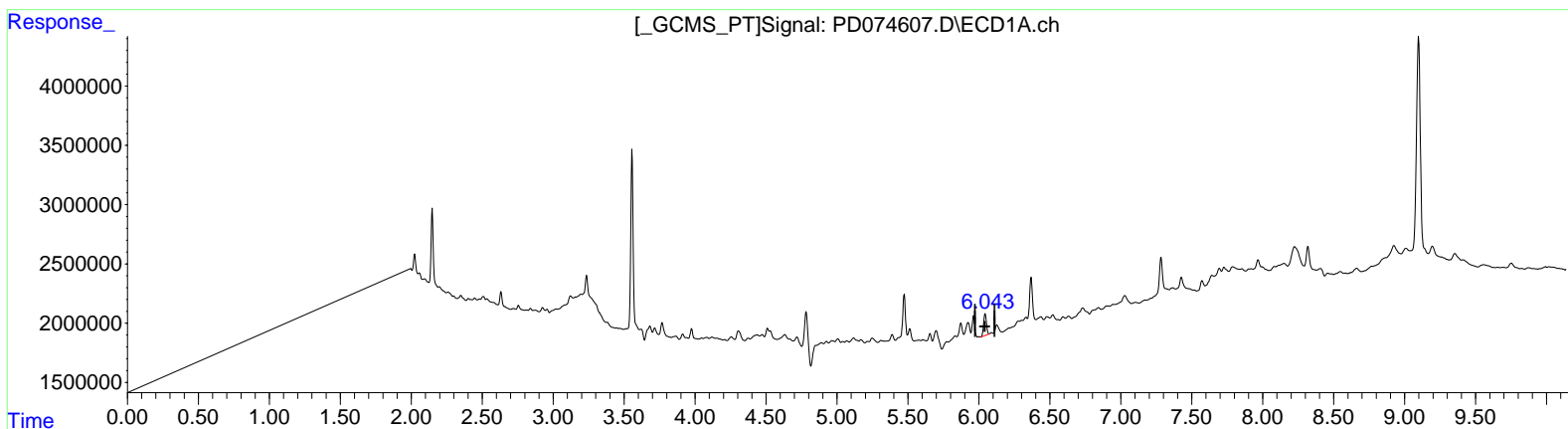
Instrument :
 ECD_D
 ClientSampleId :
 CB988

Manual Integrations APPROVED

Reviewed By : Abdul Mirza 04/07/2023
 Supervised By : Ankita Jodhani 04/07/2023

Integration File signal 1: autoint1.e
 Integration File signal 2: autoint2.e
 Quant Time: Apr 07 00:54:47 2023
 Quant Method : Z:\pestpcbsrv\HPCHEM1\ECD_D\Method\PD031323CLP.M
 Quant Title : GC Extractables
 QLast Update : Tue Mar 14 03:05:06 2023
 Response via : Initial Calibration
 Integrator: ChemStation

Volume Inj. : 1 µl
 Signal #1 Phase : ZB-MR1 Signal #2 Phase: ZB-MR2
 Signal #1 Info : 30M x 0.32mm x 0.5 Signal #2 Info : 30M x 0.32mm x 0.25µm



(11) cis-Chlordane (B)
 6.044min 0.775 ng/ml
 response 2538159

(11) cis-Chlordane #2 (B)
 5.043min 0.665 ng/ml m
 response 1051175

Data Path : Z:\pestpcbsrv\HPCHEM1\ECD_D\Data\PD040623\
 Data File : PD074607.D
 Signal(s) : Signal #1: ECD1A.ch Signal #2: ECD2B.ch
 Acq On : 06 Apr 2023 09:31
 Operator : AR\AJ
 Sample : 02115-01
 Misc :
 ALS Vial : 4 Sample Multiplier: 1

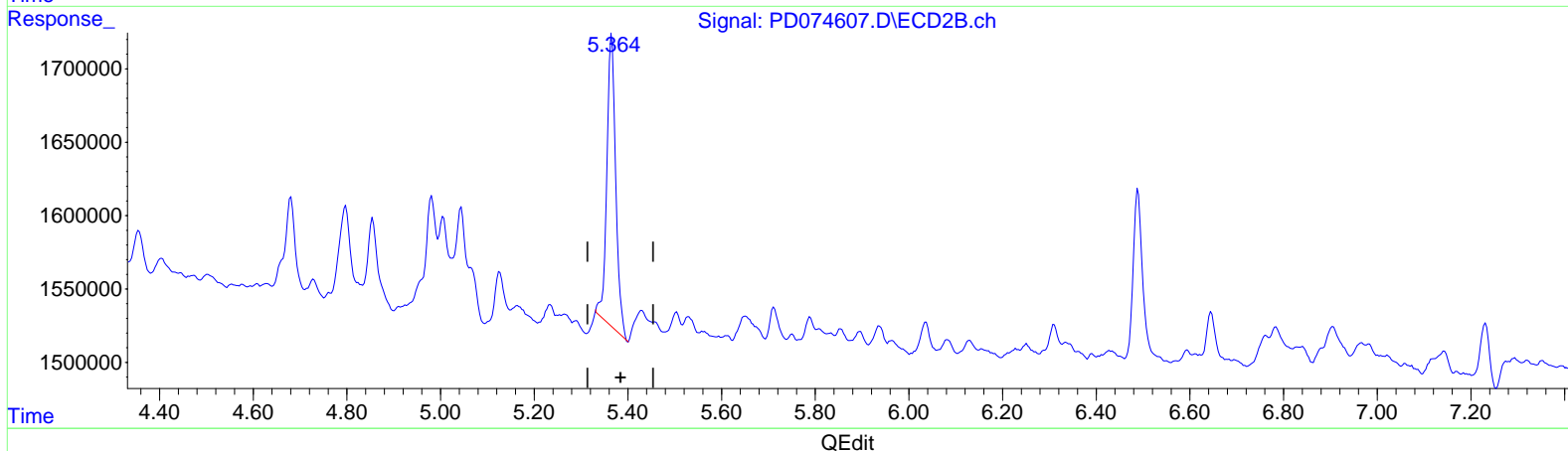
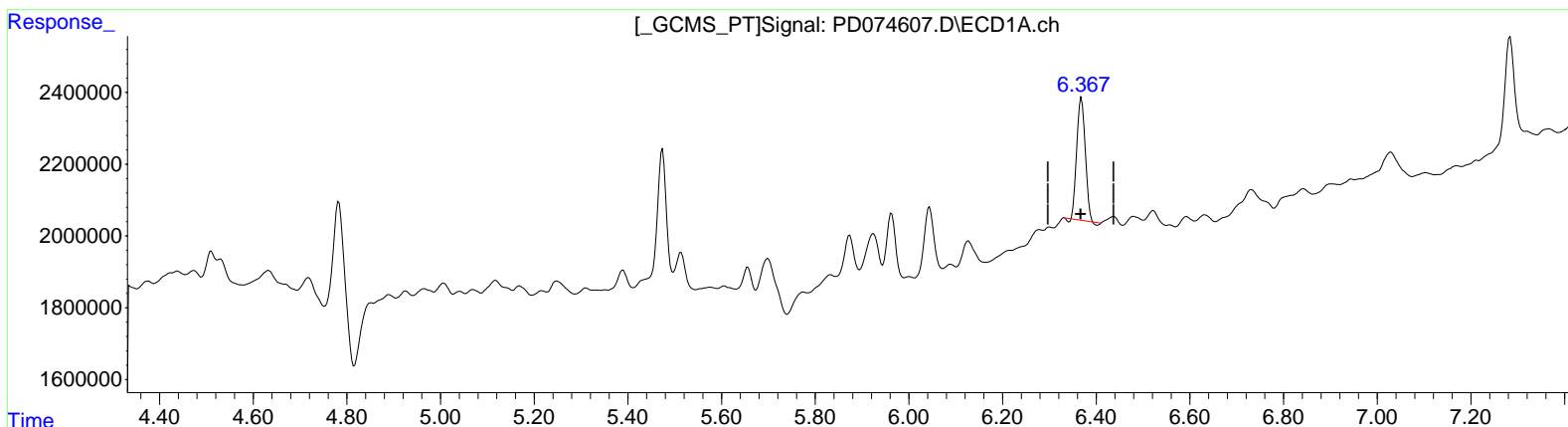
Instrument :
 ECD_D
 ClientSampleId :
 CB988

Manual Integrations APPROVED

Reviewed By : Abdul Mirza 04/07/2023
 Supervised By : Ankita Jodhani 04/07/2023

Integration File signal 1: autoint1.e
 Integration File signal 2: autoint2.e
 Quant Time: Apr 07 00:54:47 2023
 Quant Method : Z:\pestpcbsrv\HPCHEM1\ECD_D\Method\PD031323CLP.M
 Quant Title : GC Extractables
 QLast Update : Tue Mar 14 03:05:06 2023
 Response via : Initial Calibration
 Integrator: ChemStation

Volume Inj. : 1 µl
 Signal #1 Phase : ZB-MR1 Signal #2 Phase: ZB-MR2
 Signal #1 Info : 30M x 0.32mm x 0.5 Signal #2 Info : 30M x 0.32mm x 0.25µm



(13) Dieldrin (MA)
 6.369min 1.338 ng/ml
 response 4246035

(13) Dieldrin #2 (MA)
 5.365min 1.693 ng/ml
 response 2625180

Data Path : Z:\pestpcbsrv\HPCHEM1\ECD_D\Data\PD040623\
 Data File : PD074607.D
 Signal(s) : Signal #1: ECD1A.ch Signal #2: ECD2B.ch
 Acq On : 06 Apr 2023 09:31
 Operator : AR\AJ
 Sample : 02115-01
 Misc :
 ALS Vial : 4 Sample Multiplier: 1

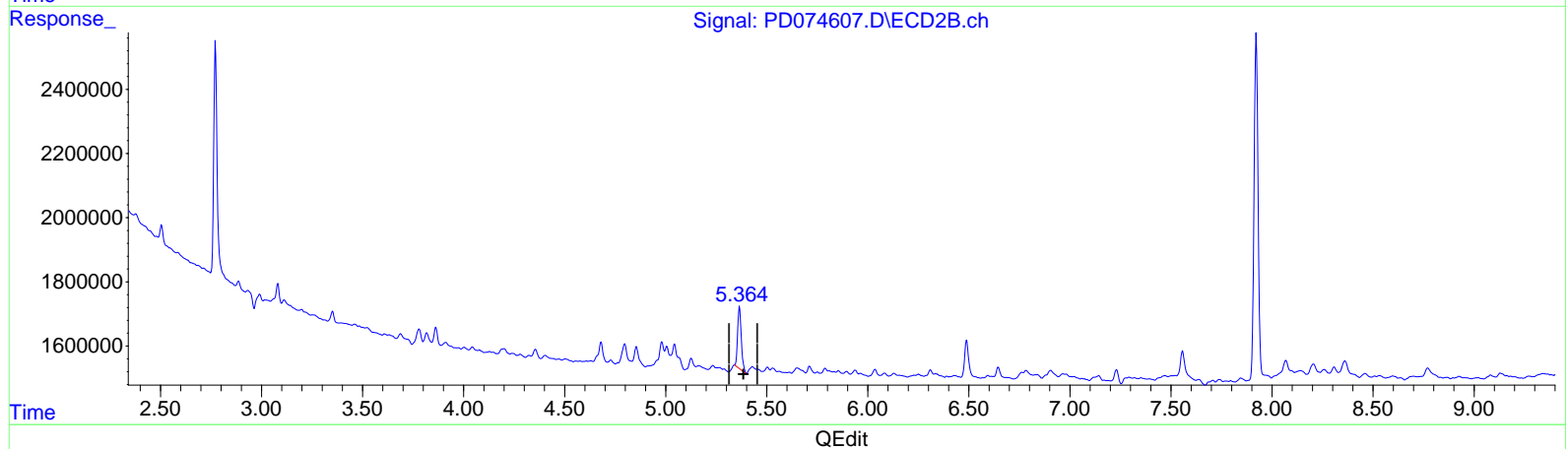
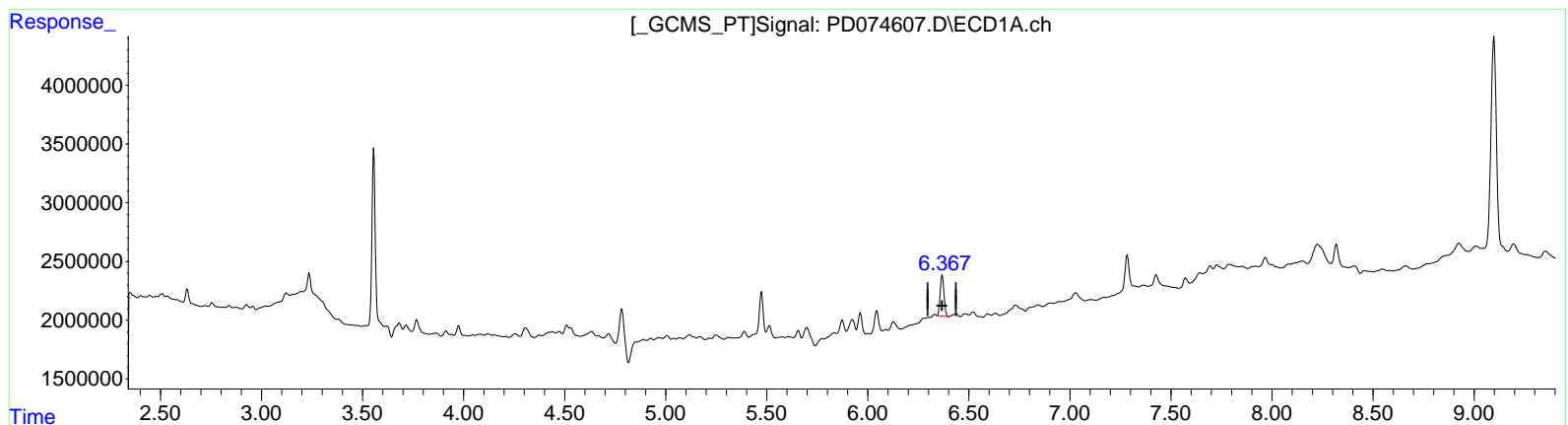
Instrument :
 ECD_D
 ClientSampleID :
 CB988

Manual Integrations APPROVED

Reviewed By : Abdul Mirza 04/07/2023
 Supervised By : Ankita Jodhani 04/07/2023

Integration File signal 1: autoint1.e
 Integration File signal 2: autoint2.e
 Quant Time: Apr 07 00:54:47 2023
 Quant Method : Z:\pestpcbsrv\HPCHEM1\ECD_D\Method\PD031323CLP.M
 Quant Title : GC Extractables
 QLast Update : Tue Mar 14 03:05:06 2023
 Response via : Initial Calibration
 Integrator: ChemStation

Volume Inj. : 1 µl
 Signal #1 Phase : ZB-MR1 Signal #2 Phase: ZB-MR2
 Signal #1 Info : 30M x 0.32mm x 0.5 Signal #2 Info : 30M x 0.32mm x 0.25µm



(13) Dieldrin (MA)
 6.367min 1.457 ng/ml m
 response 4620925

(13) Dieldrin #2 (MA)
 5.364min 1.562 ng/ml m
 response 2421450