

Data Path : Z:\pestpcbsrv\HPCHEM1\ECD_D\Data\PD040720\
 Data File : PD057745.D
 Signal(s) : Signal #1: ECD1A.ch Signal #2: ECD2B.ch
 Acq On : 07 Apr 2020 13:52
 Operator : AJ\MA
 Sample : INDA301
 Misc :
 ALS Vial : 13 Sample Multiplier: 1

Instrument :
 ECD_D
 ClientSampleId :
 INDA301

Integration File signal 1: autoint1.e
 Integration File signal 2: autoint2.e
 Quant Time: Apr 08 07:25:40 2020
 Quant Method : Z:\pestpcbsrv\HPCHEM1\ECD_D\Method\PD040720CLP.M
 Quant Title : GC Extractables
 QLast Update : Wed Apr 08 07:20:18 2020
 Response via : Initial Calibration
 Integrator: ChemStation

Volume Inj. : 1 µl
 Signal #1 Phase : ZB-MR2 Signal #2 Phase: ZB-MR1
 Signal #1 Info : 30M x 0.32mm x0.2 Signal #2 Info : 30M x 0.32mm x 0.50µm

	Compound	RT#1	RT#2	Resp#1	Resp#2	ng/ml	ng/ml

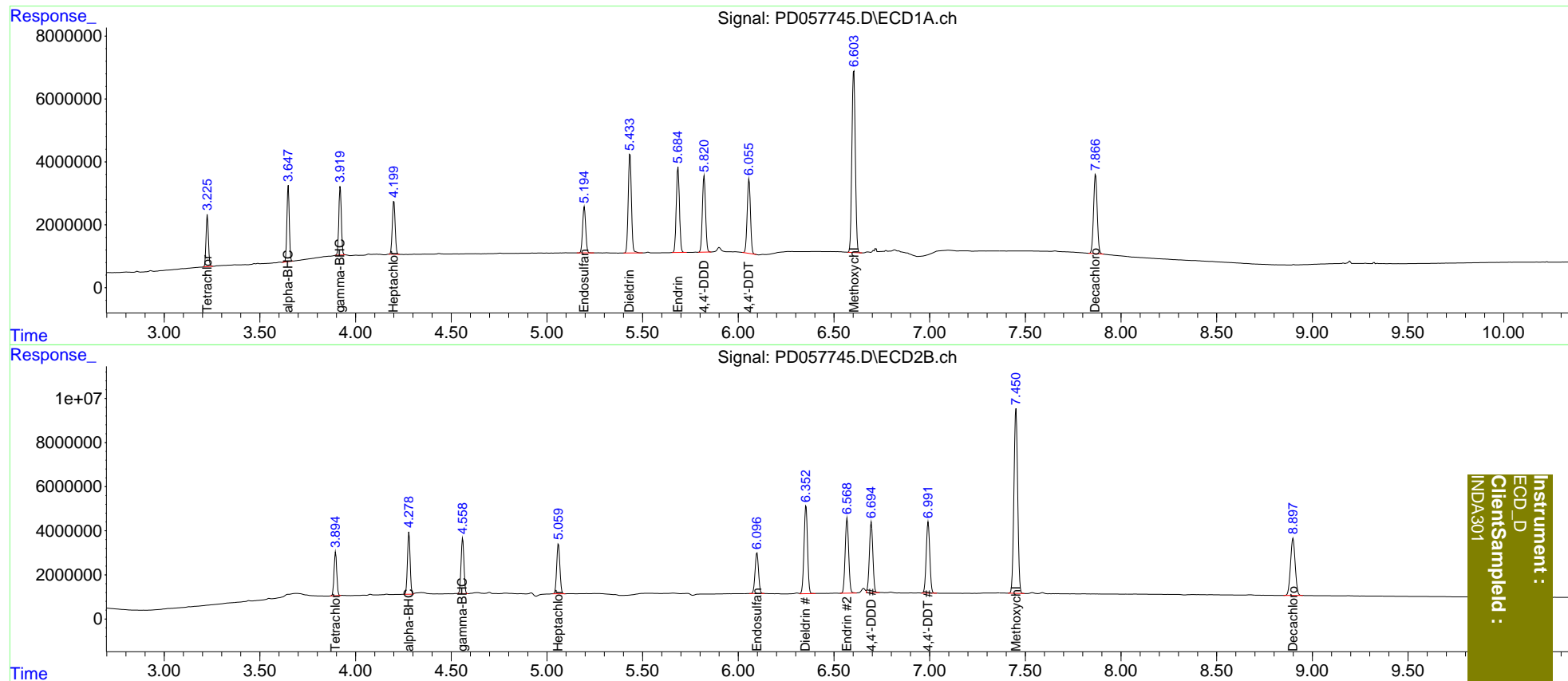
System Monitoring Compounds							
1)	SA Tetrachlo...	3.226	3.896	14320223	19338713	20.000	20.000
27)	SA Decachlor...	7.867	8.899	33209160	43695707	40.000	40.000
Target Compounds							
2)	A alpha-BHC	3.648	4.279	20639361	27215524	20.000	20.000
3)	MA gamma-BHC...	3.920	4.560	19953874	26076381	20.000	20.000
4)	MA Heptachlor	4.201	5.060	17307429	26272781	20.000	20.000
9)	A Endosulfan I	5.196	6.098	16369287	23132733	20.000	20.000
13)	MA Dieldrin	5.434	6.354	36465599	50678767	40.000	40.000
14)	MA Endrin	5.685	6.569	31310569	43157594	40.000	40.000
16)	A 4,4'-DDD	5.822	6.695	27990240	40578352	40.000	40.000
17)	MA 4,4'-DDT	6.056	6.992	27842662	41484782	40.000	40.000
20)	A Methoxychlor	6.604	7.452	72310614	113.5E6	200.000	200.000

(f)=RT Delta > 1/2 Window (#)=Amounts differ by > 25% (m)=manual int.

Data Path : Z:\pestpcbsrv\HPCHEM1\ECD_D\Data\PD040720\
 Data File : PD057745.D
 Signal(s) : Signal #1: ECD1A.ch Signal #2: ECD2B.ch
 Acq On : 07 Apr 2020 13:52
 Operator : AJ\MA
 Sample : INDA301
 Misc :
 ALS Vial : 13 Sample Multiplier: 1

Integration File signal 1: autoint1.e
 Integration File signal 2: autoint2.e
 Quant Time: Apr 08 07:25:40 2020
 Quant Method : Z:\pestpcbsrv\HPCHEM1\ECD_D\Method\PD040720CLP.M
 Quant Title : GC Extractables
 QLast Update : Wed Apr 08 07:20:18 2020
 Response via : Initial Calibration
 Integrator: ChemStation

Volume Inj. : 1 µl
 Signal #1 Phase : ZB-MR2 Signal #2 Phase: ZB-MR1
 Signal #1 Info : 30M x 0.32mm x0.2 Signal #2 Info : 30M x 0.32mm x 0.50µm



Instrument :
 ECD_D
 ClientSampleId :
 INDA301