

Data Path : Z:\pestpcbsrv\HPCHEM1\ECD_D\Data\PD040721\
 Data File : PD062004.D
 Signal(s) : Signal #1: ECD1A.ch Signal #2: ECD2B.ch
 Acq On : 07 Apr 2021 13:27
 Operator : AR\AJ
 Sample : M1894-03
 Misc :
 ALS Vial : 100 Sample Multiplier: 1

Instrument :
 ECD_D
 ClientSampleId :
 0154-FIELD-BLANK

Integration File signal 1: autoint1.e
 Integration File signal 2: autoint2.e
 Quant Time: Apr 08 02:36:18 2021
 Quant Method : Z:\pestpcbsrv\HPCHEM1\ECD_D\Method\PD032921.M
 Quant Title : GC Extractables
 QLast Update : Tue Mar 30 04:47:56 2021
 Response via : Initial Calibration
 Integrator: ChemStation

Volume Inj. : 2 µl
 Signal #1 Phase : ZB-MR2 Signal #2 Phase: ZB-MR1
 Signal #1 Info : 30M x 0.32mm x0.2 Signal #2 Info : 30M x 0.32mm x 0.50µm

Compound	RT#1	RT#2	Resp#1	Resp#2	ng/ml	ng/ml

System Monitoring Compounds						
1) SA Tetrachlo...	3.485	3.981	17157527	183.5E6	20.492	21.116
28) SA Decachlor...	8.258	9.039	14943357	108.2E6	12.145	11.456

Target Compounds

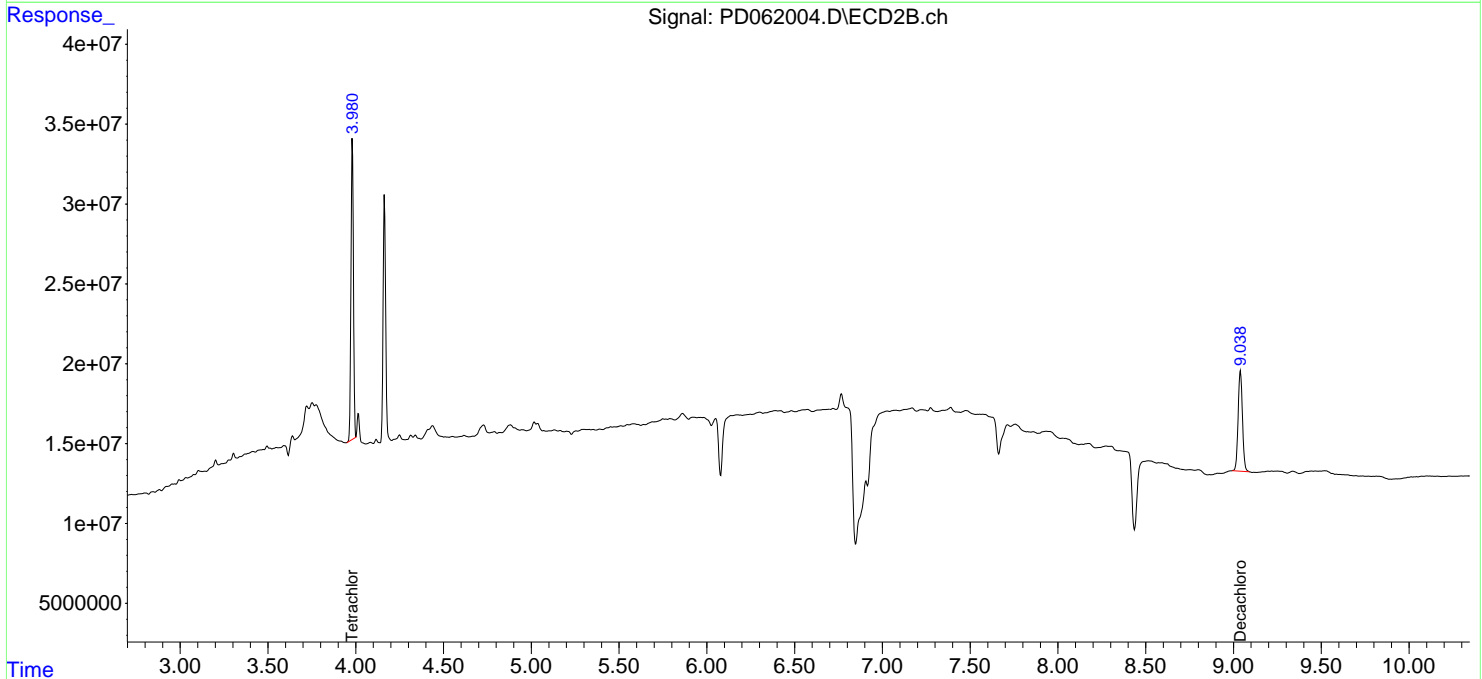
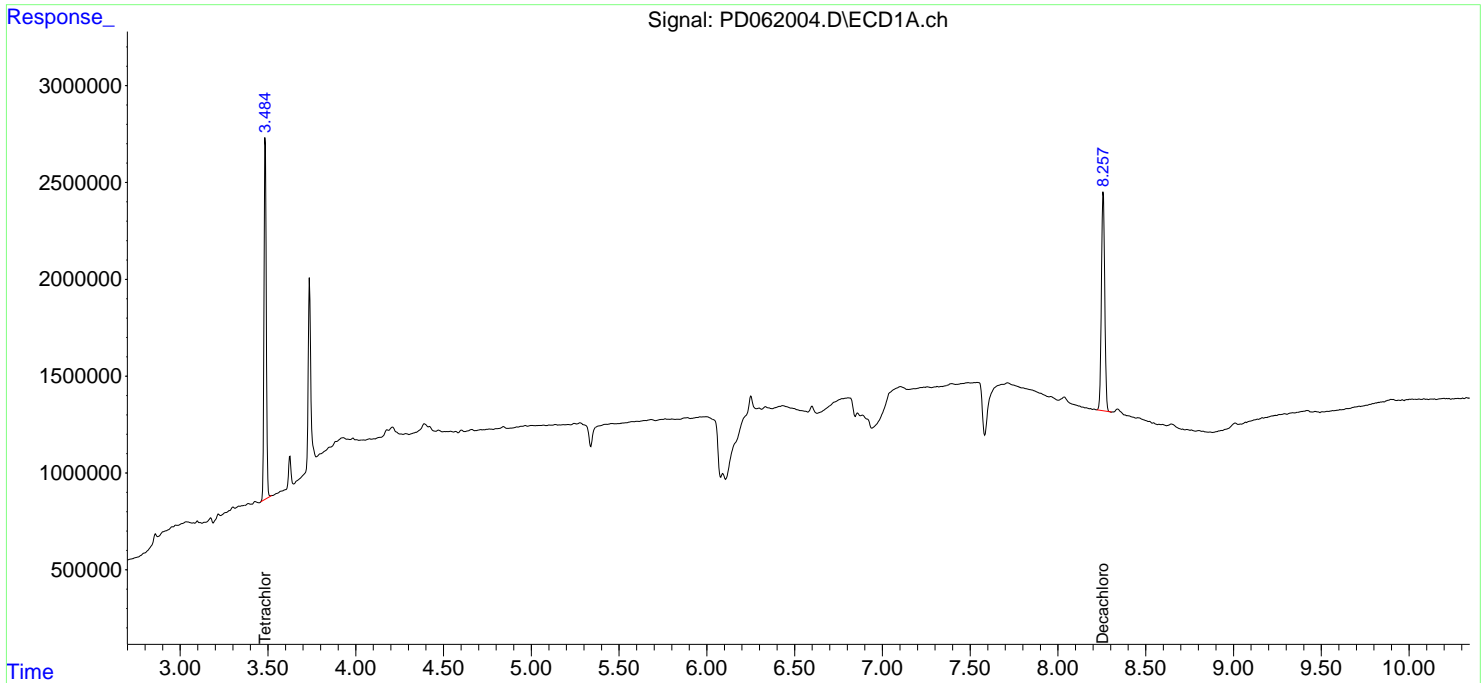
(f)=RT Delta > 1/2 Window (#)=Amounts differ by > 25% (m)=manual int.

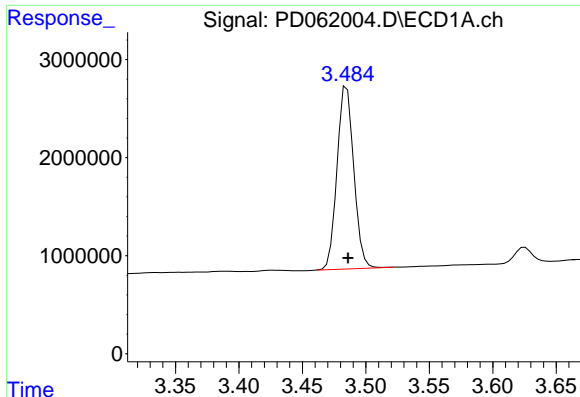
Data Path : Z:\pestpcbsrv\HPCHEM1\ECD_D\Data\PD040721\
 Data File : PD062004.D
 Signal(s) : Signal #1: ECD1A.ch Signal #2: ECD2B.ch
 Acq On : 07 Apr 2021 13:27
 Operator : AR\AJ
 Sample : M1894-03
 Misc :
 ALS Vial : 100 Sample Multiplier: 1

Instrument :
 ECD_D
ClientSampled :
 0154-FIELD-BLANK

Integration File signal 1: autoint1.e
 Integration File signal 2: autoint2.e
 Quant Time: Apr 08 02:36:18 2021
 Quant Method : Z:\pestpcbsrv\HPCHEM1\ECD_D\Method\PD032921.M
 Quant Title : GC Extractables
 QLast Update : Tue Mar 30 04:47:56 2021
 Response via : Initial Calibration
 Integrator: ChemStation

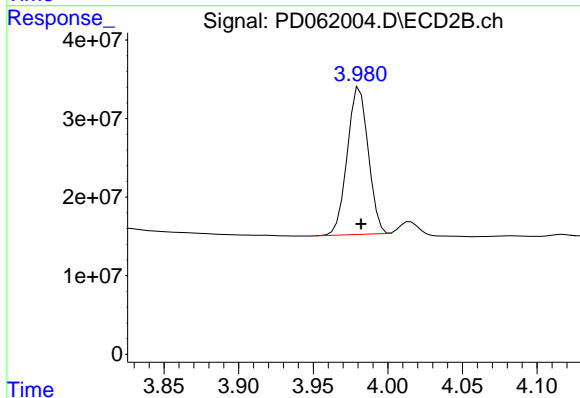
Volume Inj. : 2 µl
 Signal #1 Phase : ZB-MR2 Signal #2 Phase: ZB-MR1
 Signal #1 Info : 30M x 0.32mm x0.2 Signal #2 Info : 30M x 0.32mm x 0.50µm



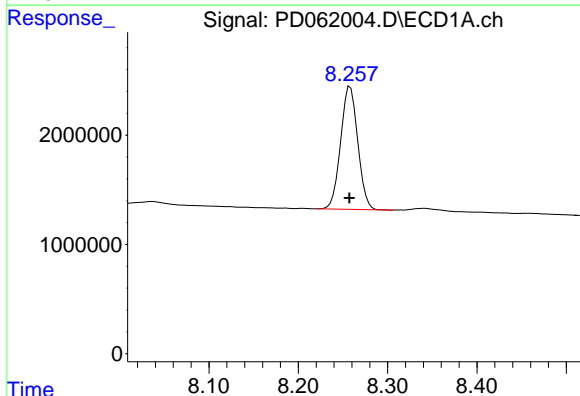


#1 Tetrachloro-m-xylene
R.T.: 3.485 min
Delta R.T.: 0.000 min
Response: 17157527
Conc: 20.49 ng/ml

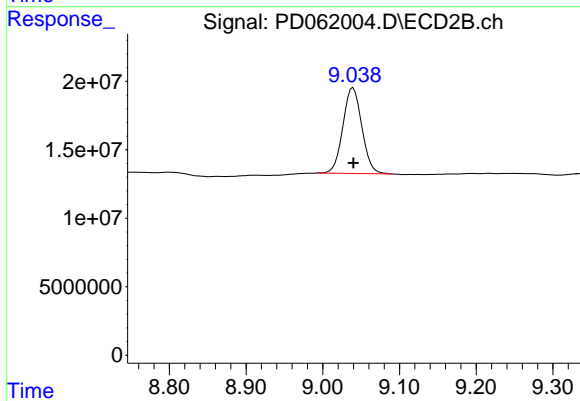
Instrument :
ECD_D
ClientSampleId :
0154-FIELD-BLANK



#1 Tetrachloro-m-xylene
R.T.: 3.981 min
Delta R.T.: 0.000 min
Response: 183475620
Conc: 21.12 ng/ml



#28 Decachlorobiphenyl
R.T.: 8.258 min
Delta R.T.: 0.000 min
Response: 14943357
Conc: 12.14 ng/ml



#28 Decachlorobiphenyl
R.T.: 9.039 min
Delta R.T.: 0.000 min
Response: 108154536
Conc: 11.46 ng/ml