

Data Path : Z:\pestpcbsrv\HPCHEM1\ECD_D\Data\PD040721\
 Data File : PD062006.D
 Signal(s) : Signal #1: ECD1A.ch Signal #2: ECD2B.ch
 Acq On : 07 Apr 2021 13:55
 Operator : AR\AJ
 Sample : M1949-02
 Misc :
 ALS Vial : 8 Sample Multiplier: 1

Instrument :
 ECD_D
 ClientSampleId :
 PE-1

Integration File signal 1: autoint1.e
 Integration File signal 2: autoint2.e
 Quant Time: Apr 08 02:36:51 2021
 Quant Method : Z:\pestpcbsrv\HPCHEM1\ECD_D\Method\PD032921.M
 Quant Title : GC Extractables
 QLast Update : Tue Mar 30 04:47:56 2021
 Response via : Initial Calibration
 Integrator: ChemStation

Volume Inj. : 2 µl
 Signal #1 Phase : ZB-MR2 Signal #2 Phase: ZB-MR1
 Signal #1 Info : 30M x 0.32mm x0.2 Signal #2 Info : 30M x 0.32mm x 0.50µm

Compound	RT#1	RT#2	Resp#1	Resp#2	ng/ml	ng/ml

System Monitoring Compounds						
1) SA Tetrachlo...	3.485	3.981	21369702	229.1E6	25.522	26.372
28) SA Decachlor...	8.258	9.041	27071972	193.3E6	22.002	20.475

Target Compounds

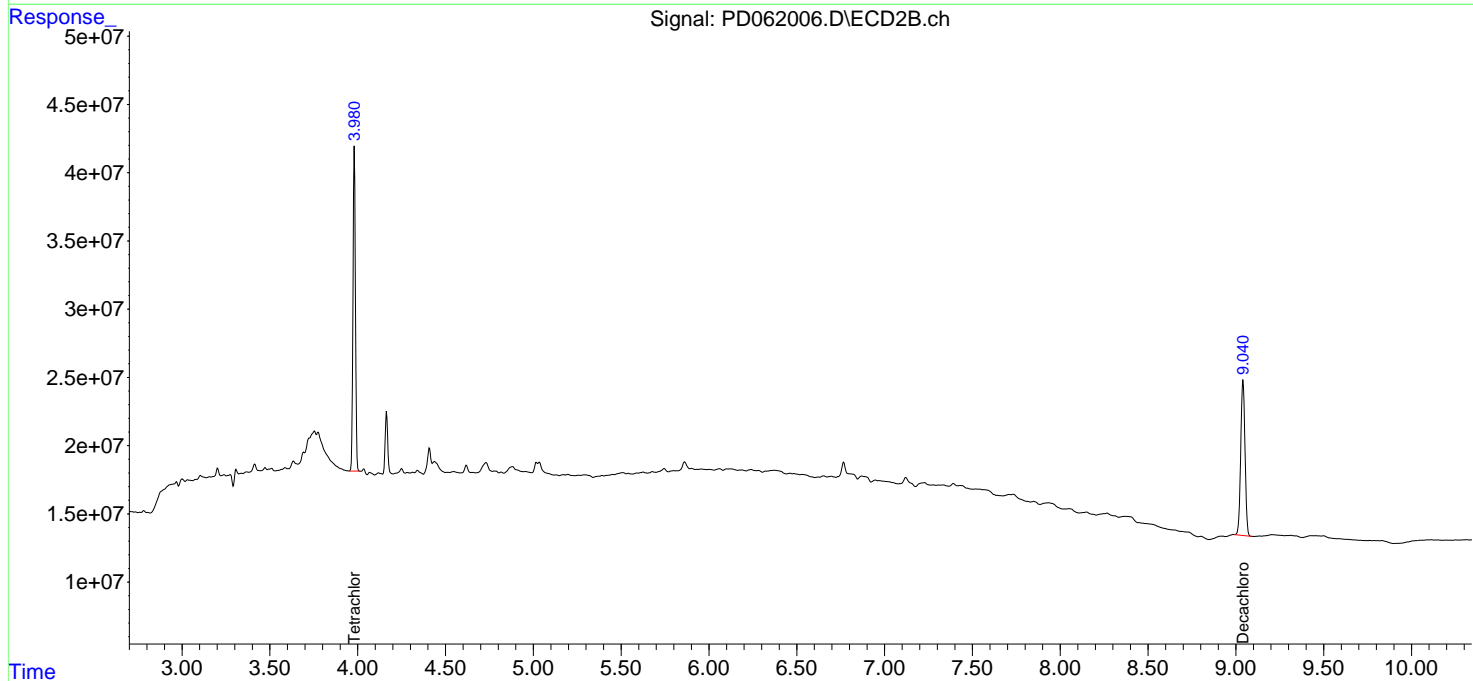
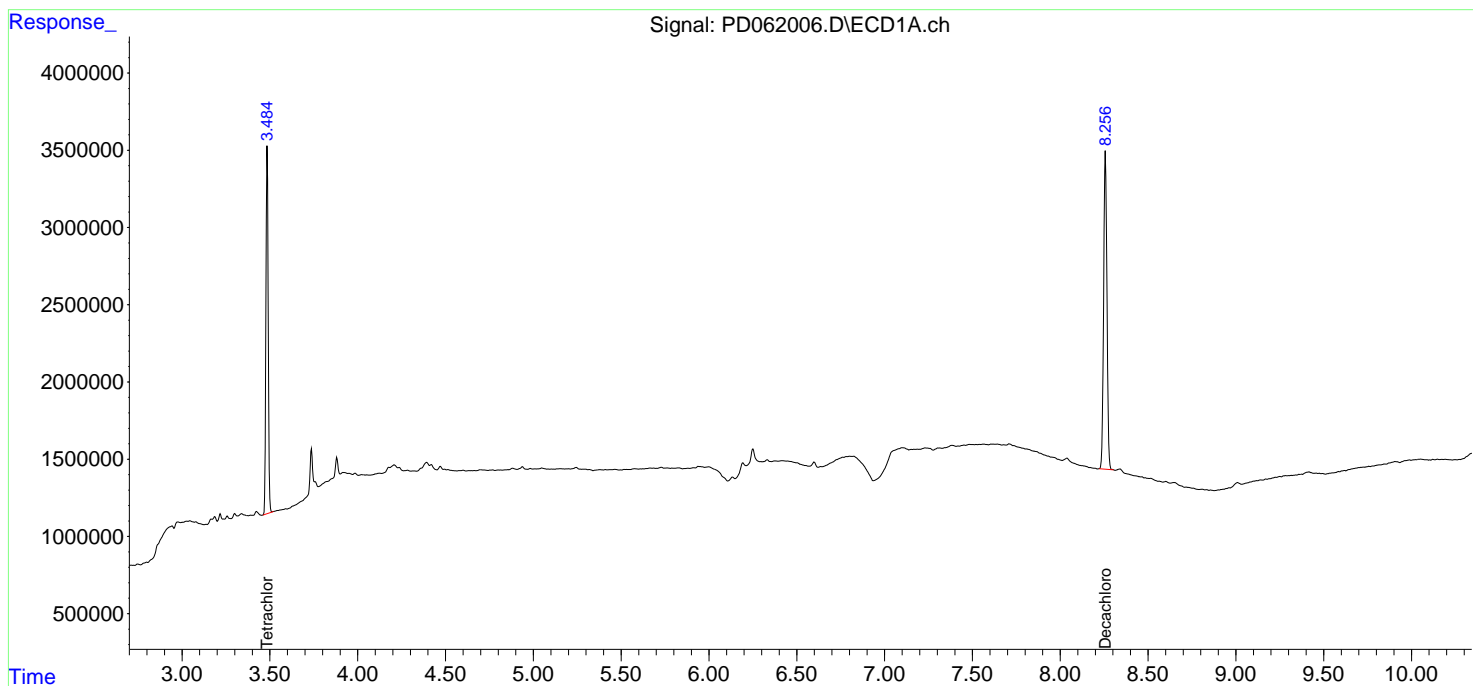
(f)=RT Delta > 1/2 Window (#)=Amounts differ by > 25% (m)=manual int.

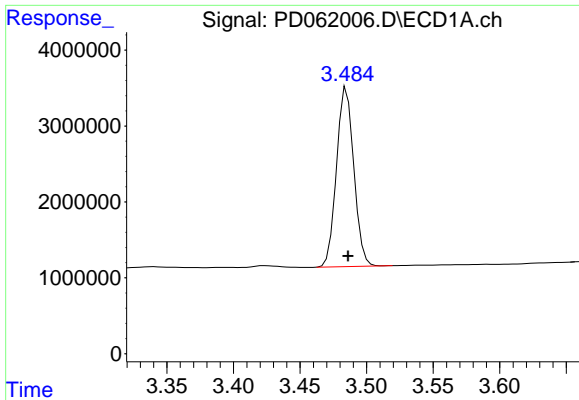
Data Path : Z:\pestpcbsrv\HPCHEM1\ECD_D\Data\PD040721\
 Data File : PD062006.D
 Signal(s) : Signal #1: ECD1A.ch Signal #2: ECD2B.ch
 Acq On : 07 Apr 2021 13:55
 Operator : AR\AJ
 Sample : M1949-02
 Misc :
 ALS Vial : 8 Sample Multiplier: 1

Instrument :
 ECD_D
 ClientSampled :
 PE-1

Integration File signal 1: autoint1.e
 Integration File signal 2: autoint2.e
 Quant Time: Apr 08 02:36:51 2021
 Quant Method : Z:\pestpcbsrv\HPCHEM1\ECD_D\Method\PD032921.M
 Quant Title : GC Extractables
 QLast Update : Tue Mar 30 04:47:56 2021
 Response via : Initial Calibration
 Integrator: ChemStation

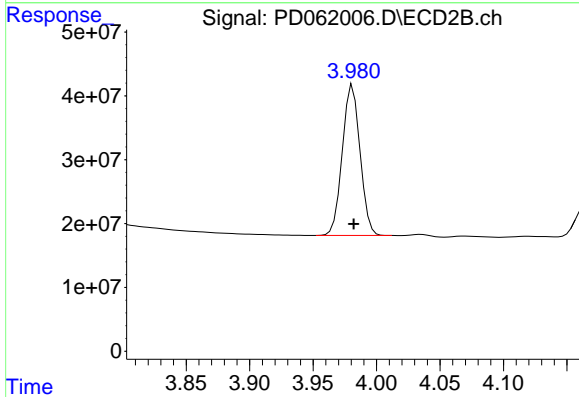
Volume Inj. : 2 µl
 Signal #1 Phase : ZB-MR2 Signal #2 Phase: ZB-MR1
 Signal #1 Info : 30M x 0.32mm x0.2 Signal #2 Info : 30M x 0.32mm x 0.50µm



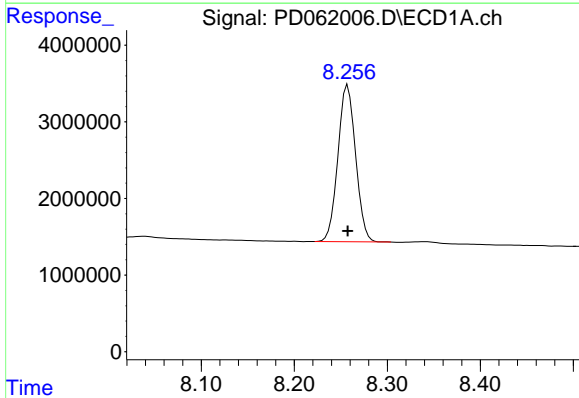


#1 Tetrachloro-m-xylene
 R.T.: 3.485 min
 Delta R.T.: 0.000 min
 Response: 21369702
 Conc: 25.52 ng/ml

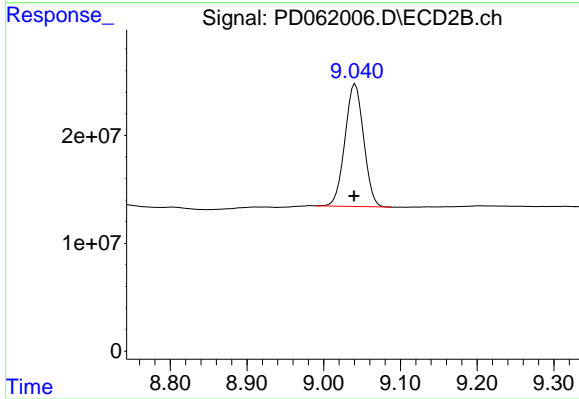
Instrument :
 ECD_D
 ClientSampled :
 PE-1



#1 Tetrachloro-m-xylene
 R.T.: 3.981 min
 Delta R.T.: 0.000 min
 Response: 229147276
 Conc: 26.37 ng/ml



#28 Decachlorobiphenyl
 R.T.: 8.258 min
 Delta R.T.: 0.000 min
 Response: 27071972
 Conc: 22.00 ng/ml



#28 Decachlorobiphenyl
 R.T.: 9.041 min
 Delta R.T.: 0.001 min
 Response: 193295662
 Conc: 20.48 ng/ml