

Data Path : Z:\pestpcbsrv\HPCHEM1\ECD_D\Data\PD040721\
 Data File : PD062009.D
 Signal(s) : Signal #1: ECD1A.ch Signal #2: ECD2B.ch
 Acq On : 07 Apr 2021 14:37
 Operator : AR\AJ
 Sample : M1949-05
 Misc :
 ALS Vial : 11 Sample Multiplier: 1

Instrument :
 ECD_D
 ClientSampleID :
 AB-1

Integration File signal 1: autoint1.e
 Integration File signal 2: autoint2.e
 Quant Time: Apr 08 02:37:41 2021
 Quant Method : Z:\pestpcbsrv\HPCHEM1\ECD_D\Method\PD032921.M
 Quant Title : GC Extractables
 QLast Update : Tue Mar 30 04:47:56 2021
 Response via : Initial Calibration
 Integrator: ChemStation

Volume Inj. : 2 µl
 Signal #1 Phase : ZB-MR2 Signal #2 Phase: ZB-MR1
 Signal #1 Info : 30M x 0.32mm x0.2 Signal #2 Info : 30M x 0.32mm x 0.50µm

Compound	RT#1	RT#2	Resp#1	Resp#2	ng/ml	ng/ml

System Monitoring Compounds						
1) SA Tetrachlo...	3.486	3.981	21150080	225.0E6	25.260	25.901
28) SA Decachlor...	8.258	9.040	26489910	194.9E6	21.529	20.642

Target Compounds

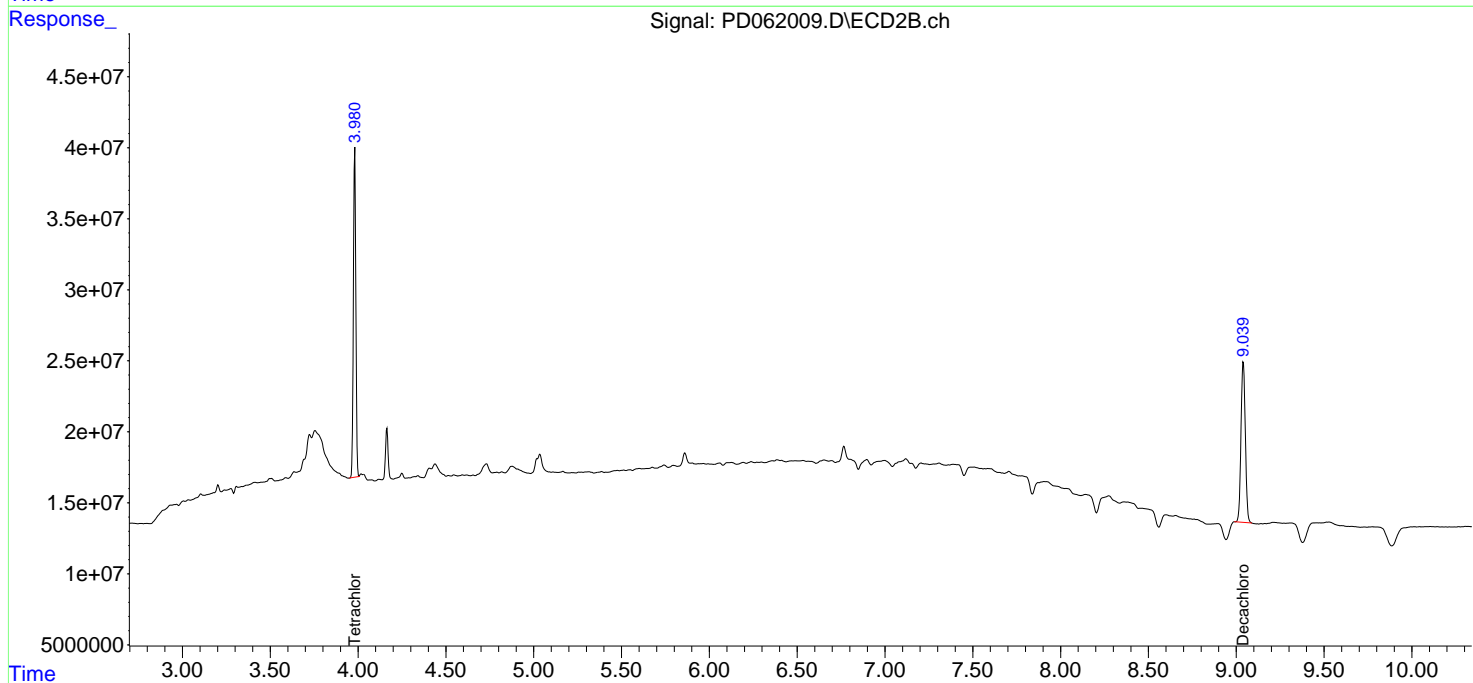
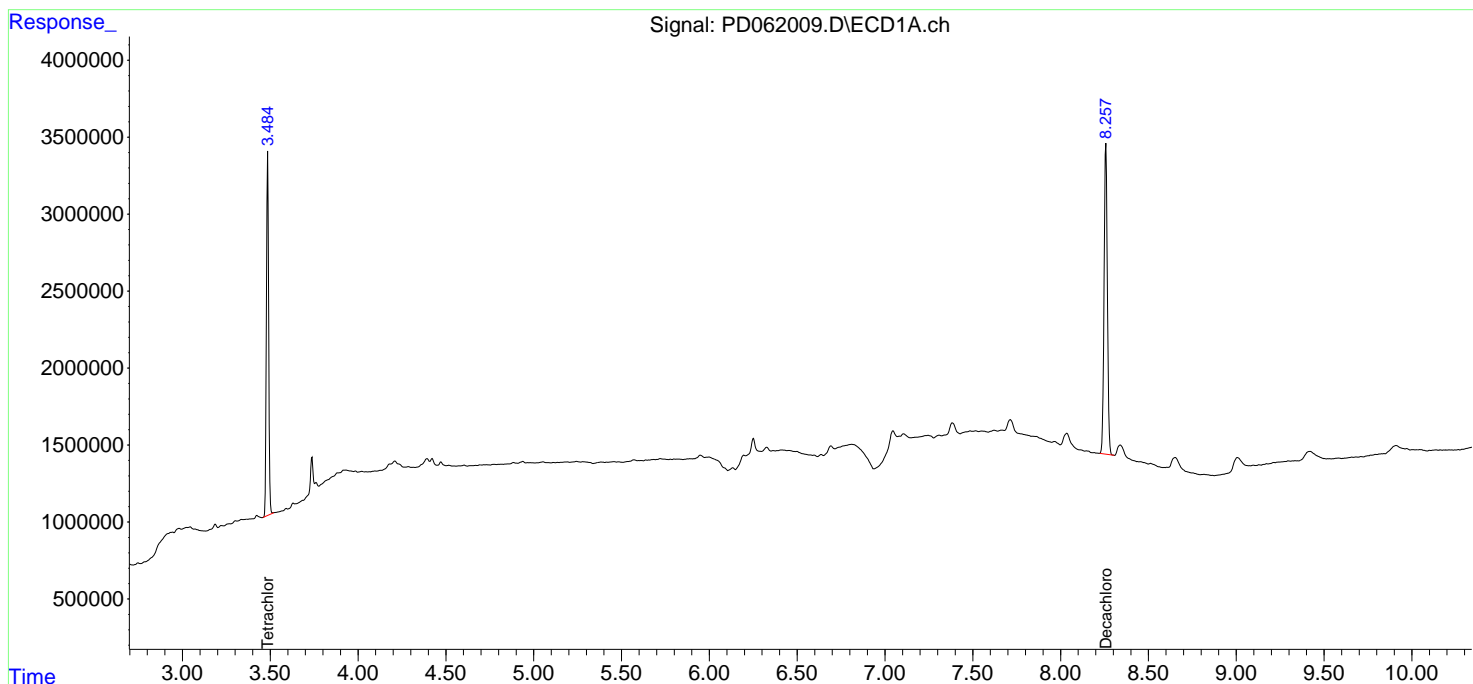
(f)=RT Delta > 1/2 Window (#)=Amounts differ by > 25% (m)=manual int.

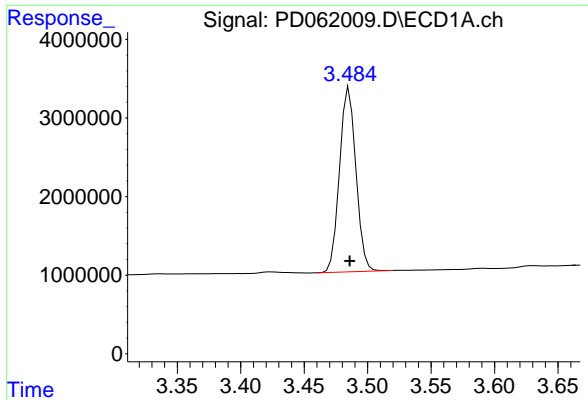
Data Path : Z:\pestpcbsrv\HPCHEM1\ECD_D\Data\PD040721\
Data File : PD062009.D
Signal(s) : Signal #1: ECD1A.ch Signal #2: ECD2B.ch
Acq On : 07 Apr 2021 14:37
Operator : AR\AJ
Sample : M1949-05
Misc :
ALS Vial : 11 Sample Multiplier: 1

Instrument :
ECD_D
ClientSampled :
AB-1

Integration File signal 1: autoint1.e
Integration File signal 2: autoint2.e
Quant Time: Apr 08 02:37:41 2021
Quant Method : Z:\pestpcbsrv\HPCHEM1\ECD_D\Method\PD032921.M
Quant Title : GC Extractables
QLast Update : Tue Mar 30 04:47:56 2021
Response via : Initial Calibration
Integrator: ChemStation

Volume Inj. : 2 µl
Signal #1 Phase : ZB-MR2 Signal #2 Phase: ZB-MR1
Signal #1 Info : 30M x 0.32mm x0.2 Signal #2 Info : 30M x 0.32mm x 0.50µm

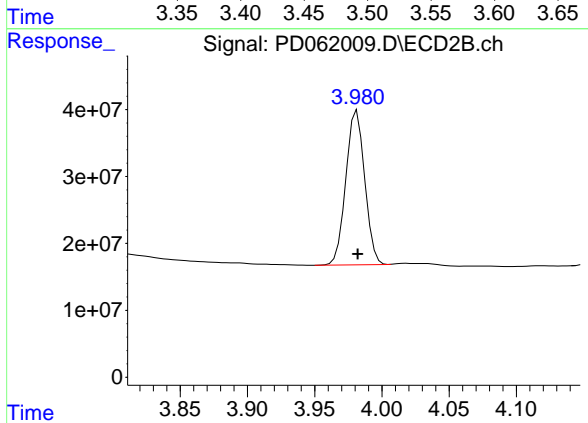




#1 Tetrachloro-m-xylene

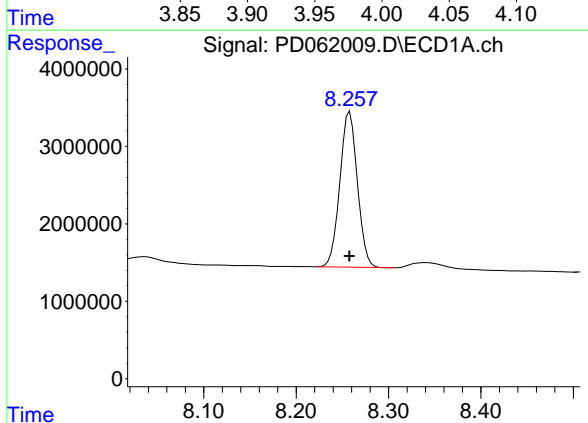
R.T.: 3.486 min
 Delta R.T.: 0.000 min
 Response: 21150080
 Conc: 25.26 ng/ml

Instrument :
 ECD_D
 ClientSampled :
 AB-1



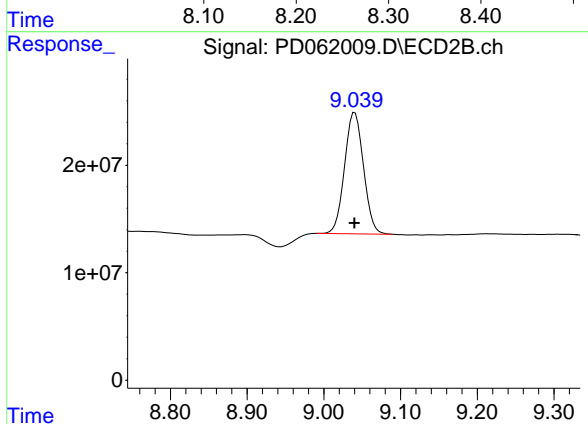
#1 Tetrachloro-m-xylene

R.T.: 3.981 min
 Delta R.T.: 0.000 min
 Response: 225048542
 Conc: 25.90 ng/ml



#28 Decachlorobiphenyl

R.T.: 8.258 min
 Delta R.T.: 0.000 min
 Response: 26489910
 Conc: 21.53 ng/ml



#28 Decachlorobiphenyl

R.T.: 9.040 min
 Delta R.T.: 0.000 min
 Response: 194869738
 Conc: 20.64 ng/ml