

Data Path : Z:\pestpcbsrv\HPCHEM1\ECD\_D\Data\PD040721\  
 Data File : PD062021.D  
 Signal(s) : Signal #1: ECD1A.ch Signal #2: ECD2B.ch  
 Acq On : 07 Apr 2021 18:03  
 Operator : AR\AJ  
 Sample : M1953-01  
 Misc :  
 ALS Vial : 21 Sample Multiplier: 1

**Instrument :**  
 ECD\_D  
**ClientSampleId :**  
 HD-02-040621

**Manual Integrations**  
**APPROVED**  
 Ankita  
 4/8/2021 3:09:01 PM

Integration File signal 1: autoint1.e  
 Integration File signal 2: autoint2.e  
 Quant Time: Apr 08 02:41:22 2021  
 Quant Method : Z:\pestpcbsrv\HPCHEM1\ECD\_D\Method\PD032921.M  
 Quant Title : GC Extractables  
 QLast Update : Tue Mar 30 04:47:56 2021  
 Response via : Initial Calibration  
 Integrator: ChemStation

Volume Inj. : 2 µl  
 Signal #1 Phase : ZB-MR2 Signal #2 Phase: ZB-MR1  
 Signal #1 Info : 30M x 0.32mm x0.2 Signal #2 Info : 30M x 0.32mm x 0.50µm

Compound	RT#1	RT#2	Resp#1	Resp#2	ng/ml	ng/ml
-----						
System Monitoring Compounds						
1) SA Tetrachlo...	3.485	3.981	13035265	131.8E6	15.568	15.174
28) SA Decachlor...	8.257	9.041	18987176	139.2E6	15.431	14.747
Target Compounds						
12) B 4,4'-DDE	5.656	6.316	9025634	94266943	8.032	8.180
16) A 4,4'-DDD	6.174	6.805	922398	19918229	0.991	2.104m#
17) MA 4,4'-DDT	6.414	7.106	1194506	10201967	1.326m	1.068
-----						

(f)=RT Delta > 1/2 Window (#)=Amounts differ by > 25% (m)=manual int.

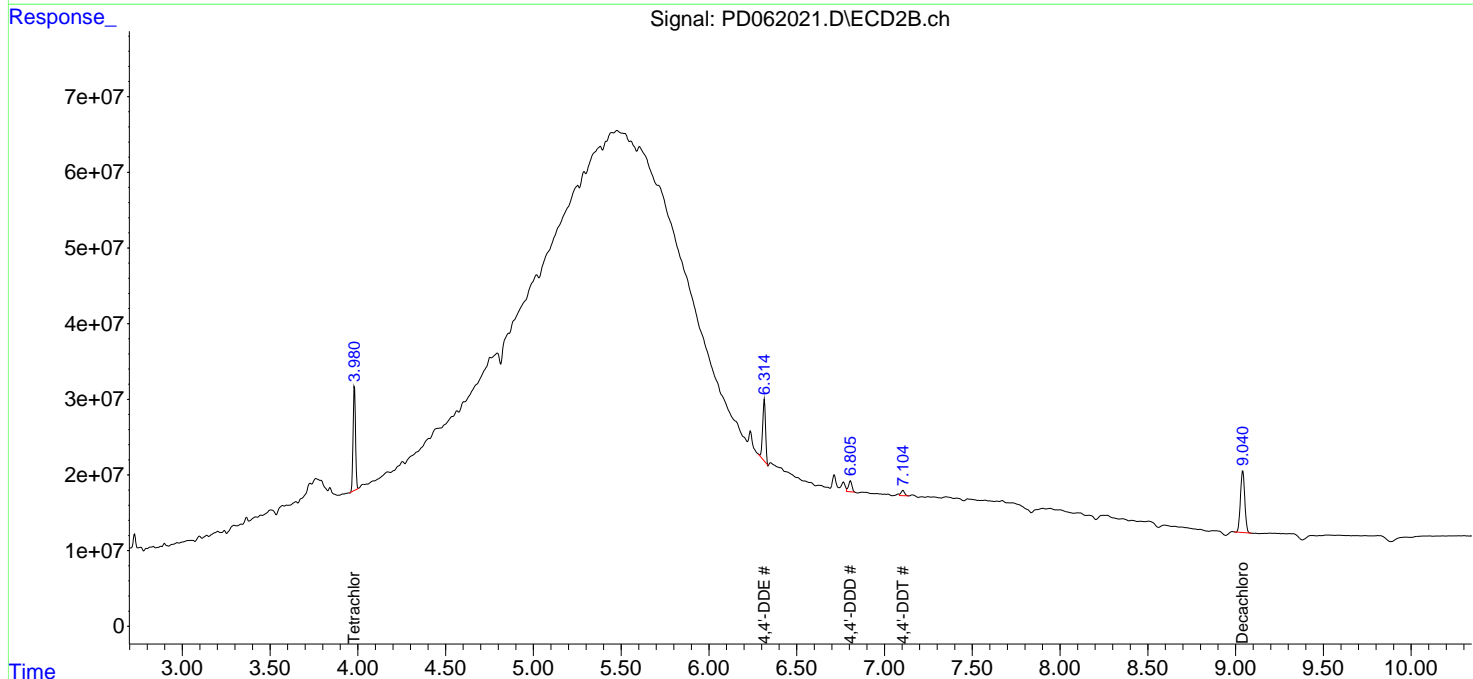
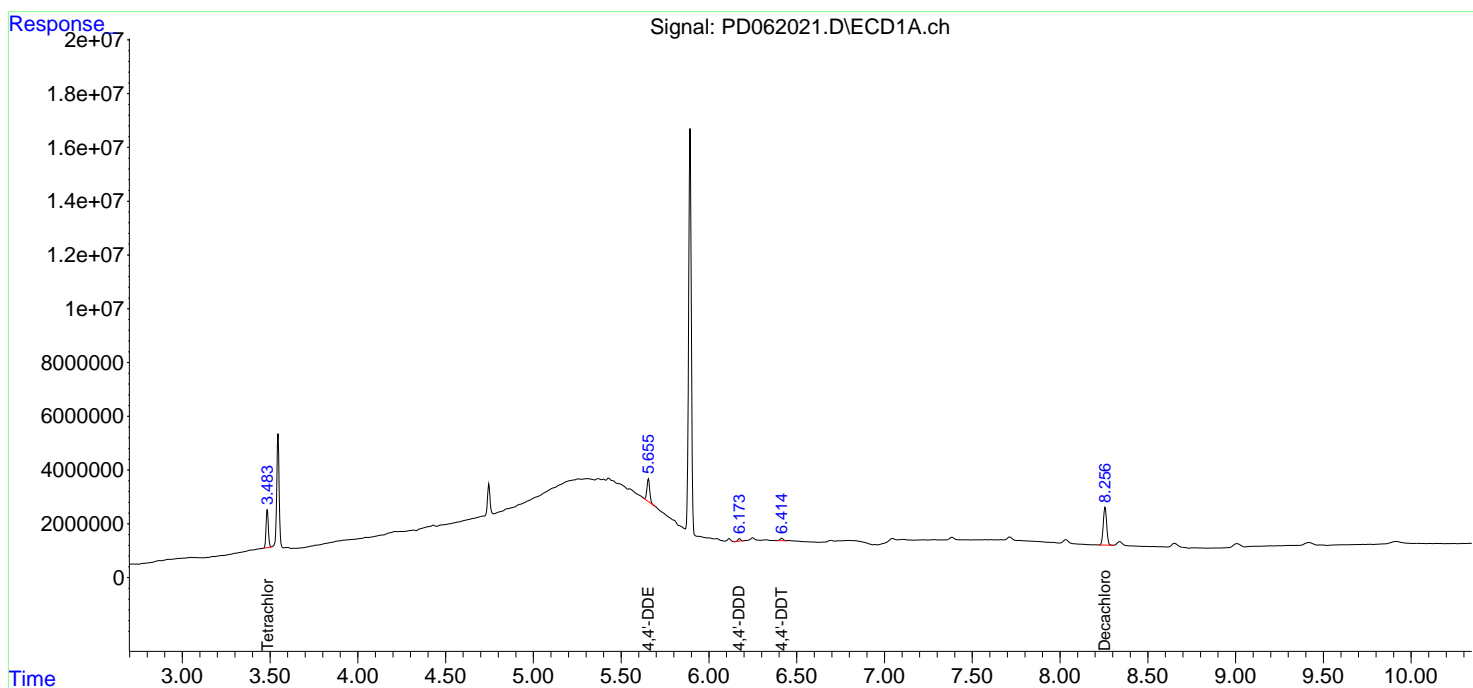
Data Path : Z:\pestpcbsrv\HPCHEM1\ECD\_D\Data\PD040721\  
 Data File : PD062021.D  
 Signal(s) : Signal #1: ECD1A.ch Signal #2: ECD2B.ch  
 Acq On : 07 Apr 2021 18:03  
 Operator : AR\AJ  
 Sample : M1953-01  
 Misc :  
 ALS Vial : 21 Sample Multiplier: 1

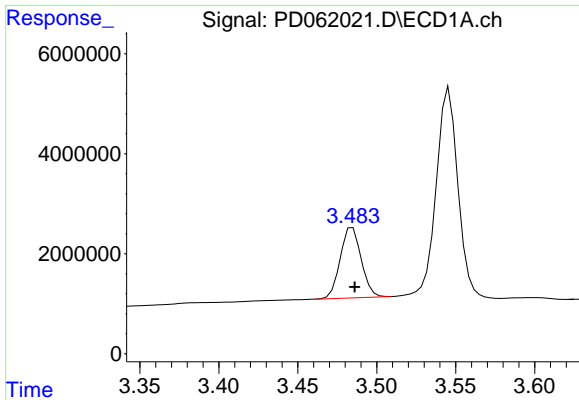
Instrument :  
 ECD\_D  
 Client Sampled :  
 HD-02-040621

Manual Integrations  
**APPROVED**  
 Ankita  
 4/8/2021 3:09:01 PM

Integration File signal 1: autoint1.e  
 Integration File signal 2: autoint2.e  
 Quant Time: Apr 08 02:41:22 2021  
 Quant Method : Z:\pestpcbsrv\HPCHEM1\ECD\_D\Method\PD032921.M  
 Quant Title : GC Extractables  
 QLast Update : Tue Mar 30 04:47:56 2021  
 Response via : Initial Calibration  
 Integrator: ChemStation

Volume Inj. : 2 µl  
 Signal #1 Phase : ZB-MR2 Signal #2 Phase: ZB-MR1  
 Signal #1 Info : 30M x 0.32mm x0.2 Signal #2 Info : 30M x 0.32mm x 0.50µm

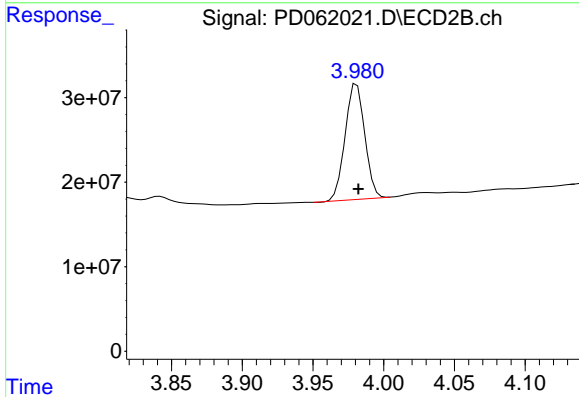




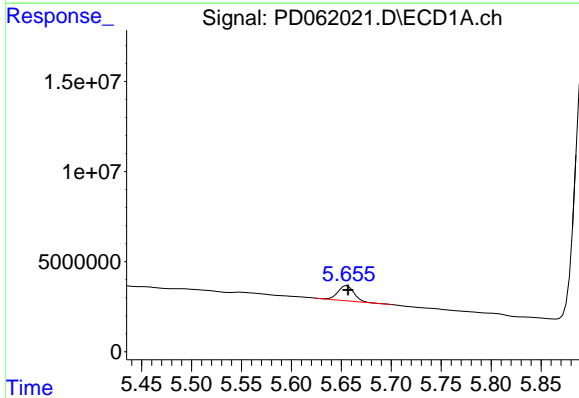
#1 Tetrachloro-m-xylene  
 R.T.: 3.485 min  
 Delta R.T.: -0.001 min  
 Response: 13035265  
 Conc: 15.57 ng/ml

Instrument :  
 ECD\_D  
 ClientSampled :  
 HD-02-040621

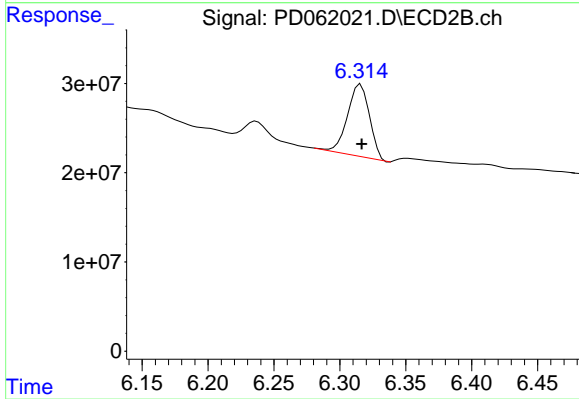
Manual Integrations  
 APPROVED  
 Ankita  
 4/8/2021 3:09:01 PM



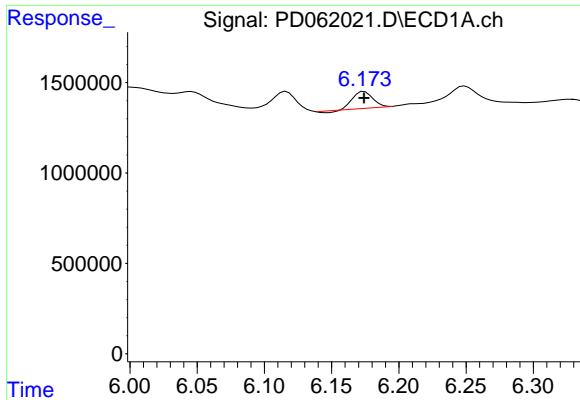
#1 Tetrachloro-m-xylene  
 R.T.: 3.981 min  
 Delta R.T.: 0.000 min  
 Response: 131848532  
 Conc: 15.17 ng/ml



#12 4,4'-DDE  
 R.T.: 5.656 min  
 Delta R.T.: -0.001 min  
 Response: 9025634  
 Conc: 8.03 ng/ml



#12 4,4'-DDE  
 R.T.: 6.316 min  
 Delta R.T.: 0.000 min  
 Response: 94266943  
 Conc: 8.18 ng/ml

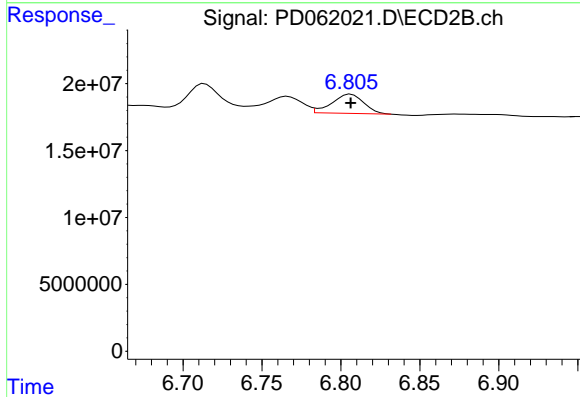


#16 4,4'-DDD

R.T.: 6.174 min  
 Delta R.T.: 0.000 min  
 Response: 922398  
 Conc: 0.99 ng/ml

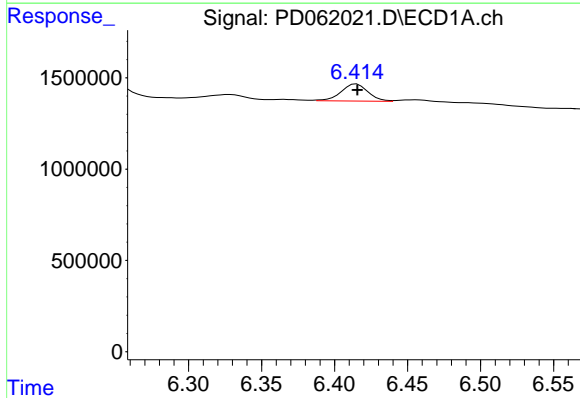
**Instrument :**  
 ECD\_D  
**ClientSampled :**  
 HD-02-040621

**Manual Integrations**  
**APPROVED**  
 Ankita  
 4/8/2021 3:09:01 PM



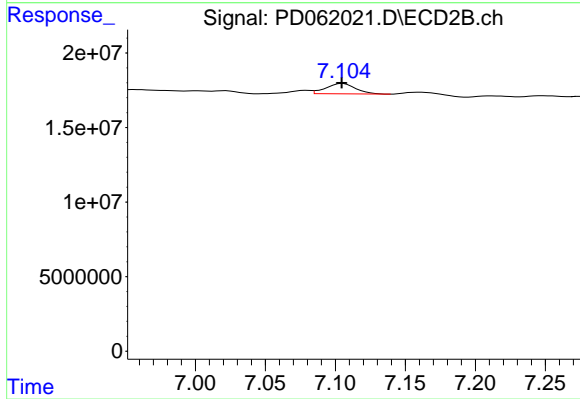
#16 4,4'-DDD

R.T.: 6.805 min  
 Delta R.T.: -0.001 min  
 Response: 19918229  
 Conc: 2.10 ng/ml m



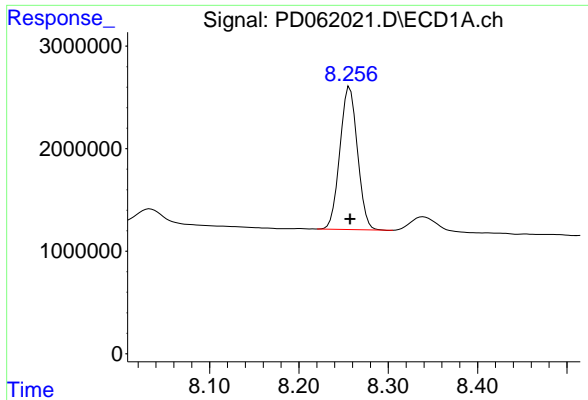
#17 4,4'-DDT

R.T.: 6.414 min  
 Delta R.T.: -0.002 min  
 Response: 1194506  
 Conc: 1.33 ng/ml m



#17 4,4'-DDT

R.T.: 7.106 min  
 Delta R.T.: 0.000 min  
 Response: 10201967  
 Conc: 1.07 ng/ml



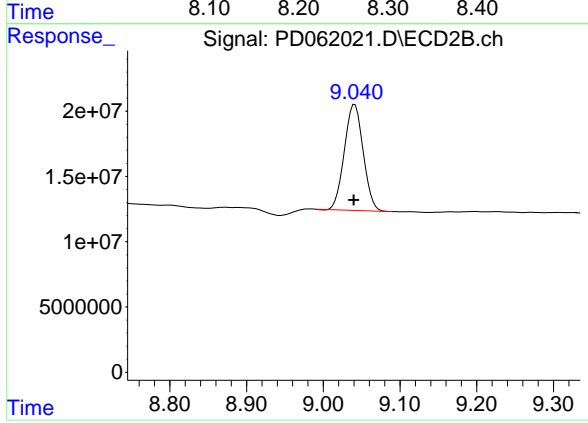
#28 Decachlorobiphenyl

R.T.: 8.257 min  
Delta R.T.: 0.000 min  
Response: 18987176  
Conc: 15.43 ng/ml

Instrument :  
ECD\_D  
ClientSampled :  
HD-02-040621

Manual Integrations  
APPROVED

Ankita  
4/8/2021 3:09:01 PM



#28 Decachlorobiphenyl

R.T.: 9.041 min  
Delta R.T.: 0.001 min  
Response: 139217849  
Conc: 14.75 ng/ml