

Data Path : Z:\pestpcbsrv\HPCHEM1\ECD_D\Data\PD040721\
 Data File : PD062029.D
 Signal(s) : Signal #1: ECD1A.ch Signal #2: ECD2B.ch
 Acq On : 07 Apr 2021 19:54
 Operator : AR\AJ
 Sample : PB135600BL
 Misc :
 ALS Vial : 29 Sample Multiplier: 1

Instrument :
 ECD_D
 ClientSampleID :
 PB135600BL

Integration File signal 1: autoint1.e
 Integration File signal 2: autoint2.e
 Quant Time: Apr 08 02:43:19 2021
 Quant Method : Z:\pestpcbsrv\HPCHEM1\ECD_D\Method\PD032921.M
 Quant Title : GC Extractables
 QLast Update : Tue Mar 30 04:47:56 2021
 Response via : Initial Calibration
 Integrator: ChemStation

Volume Inj. : 2 µl
 Signal #1 Phase : ZB-MR2 Signal #2 Phase: ZB-MR1
 Signal #1 Info : 30M x 0.32mm x0.2 Signal #2 Info : 30M x 0.32mm x 0.50µm

Compound	RT#1	RT#2	Resp#1	Resp#2	ng/ml	ng/ml

System Monitoring Compounds						
1) SA Tetrachlo...	3.485	3.981	20169359	221.4E6	24.089	25.481
28) SA Decachlor...	8.257	9.040	27506155	199.4E6	22.355	21.120

Target Compounds

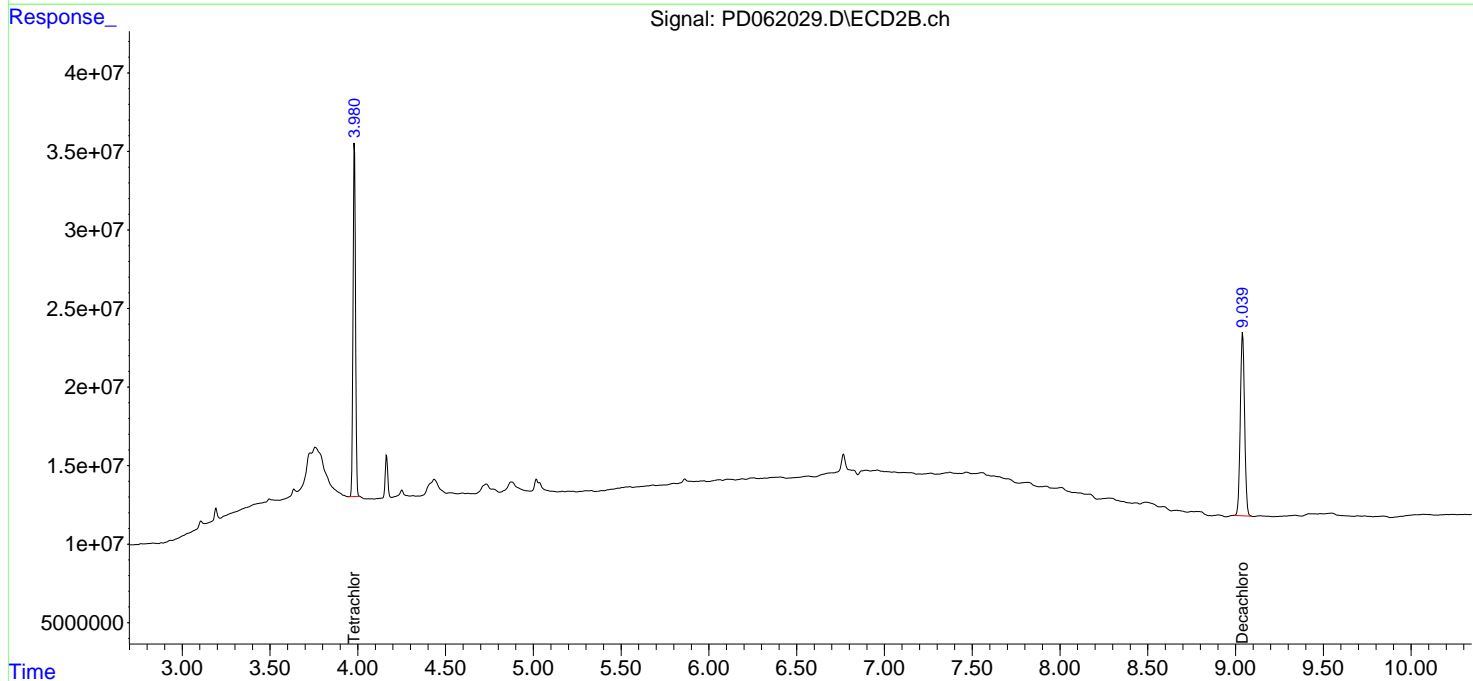
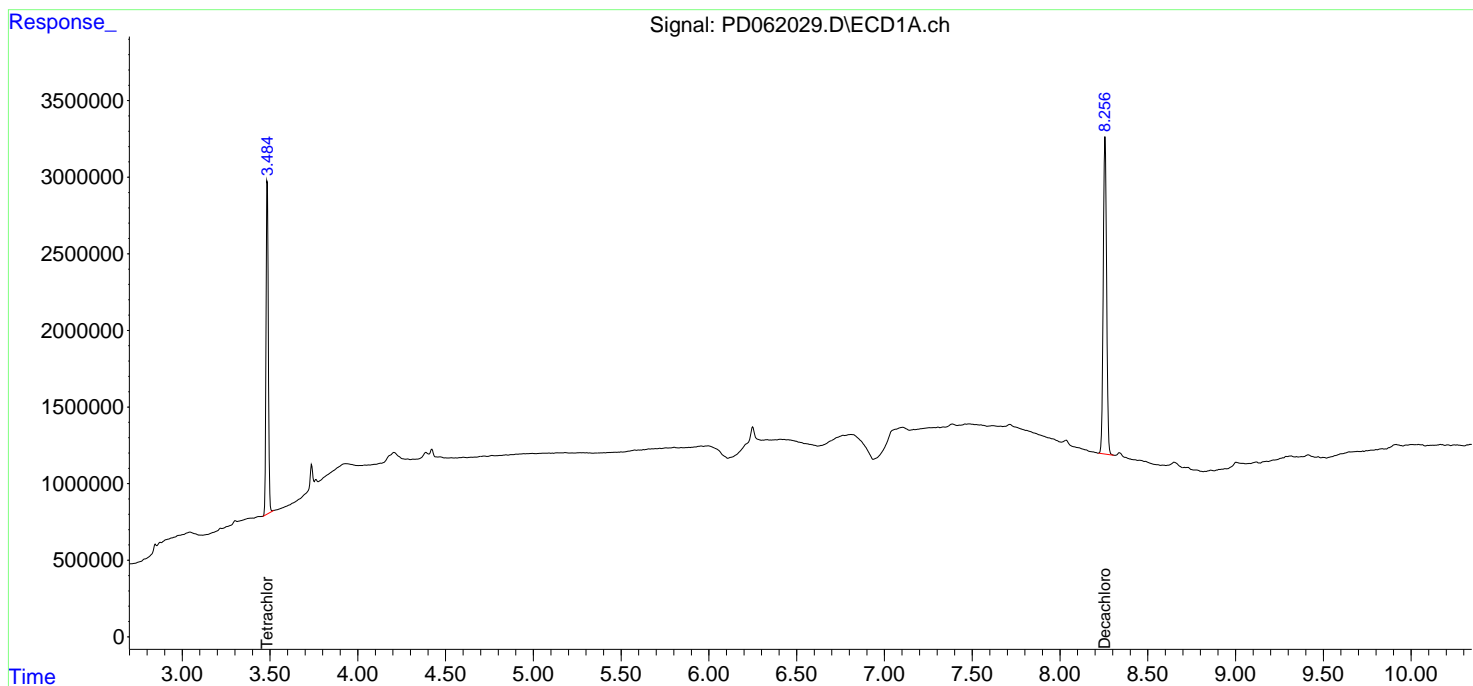
(f)=RT Delta > 1/2 Window (#)=Amounts differ by > 25% (m)=manual int.

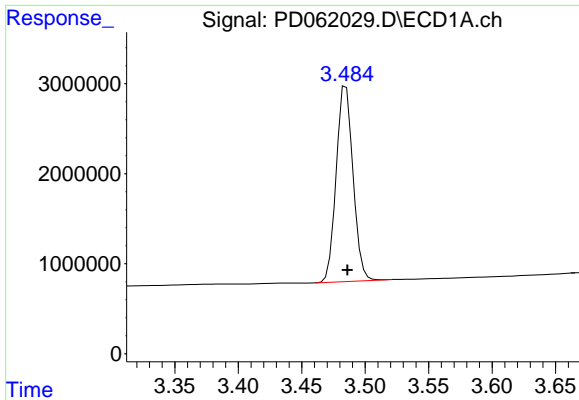
Data Path : Z:\pestpcbsrv\HPCHEM1\ECD_D\Data\PD040721\
 Data File : PD062029.D
 Signal(s) : Signal #1: ECD1A.ch Signal #2: ECD2B.ch
 Acq On : 07 Apr 2021 19:54
 Operator : AR\AJ
 Sample : PB135600BL
 Misc :
 ALS Vial : 29 Sample Multiplier: 1

Instrument :
 ECD_D
 ClientSampleID :
 PB135600BL

Integration File signal 1: autoint1.e
 Integration File signal 2: autoint2.e
 Quant Time: Apr 08 02:43:19 2021
 Quant Method : Z:\pestpcbsrv\HPCHEM1\ECD_D\Method\PD032921.M
 Quant Title : GC Extractables
 QLast Update : Tue Mar 30 04:47:56 2021
 Response via : Initial Calibration
 Integrator: ChemStation

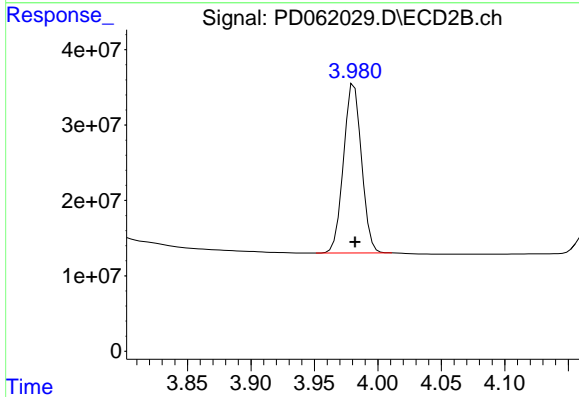
Volume Inj. : 2 µl
 Signal #1 Phase : ZB-MR2 Signal #2 Phase: ZB-MR1
 Signal #1 Info : 30M x 0.32mm x0.2 Signal #2 Info : 30M x 0.32mm x 0.50µm



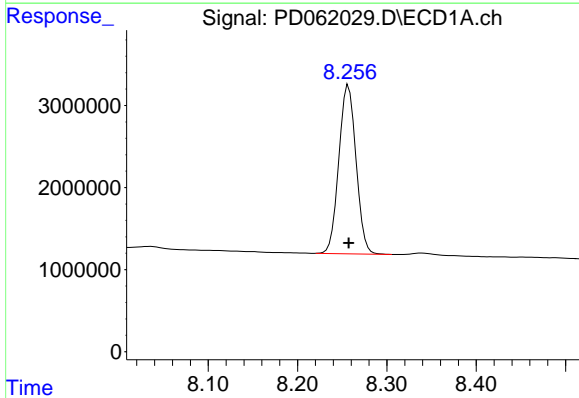


#1 Tetrachloro-m-xylene
 R.T.: 3.485 min
 Delta R.T.: -0.001 min
 Response: 20169359
 Conc: 24.09 ng/ml

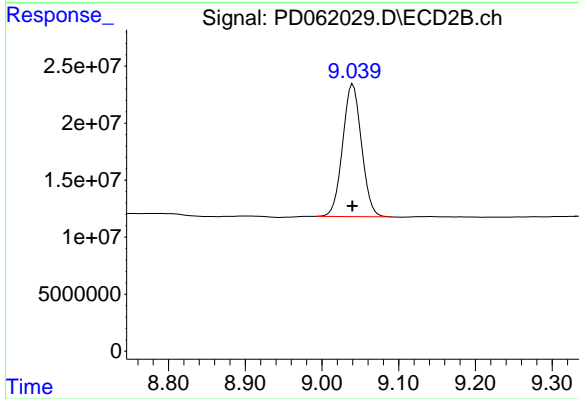
Instrument :
 ECD_D
 ClientSampled :
 PB135600BL



#1 Tetrachloro-m-xylene
 R.T.: 3.981 min
 Delta R.T.: 0.000 min
 Response: 221401932
 Conc: 25.48 ng/ml



#28 Decachlorobiphenyl
 R.T.: 8.257 min
 Delta R.T.: 0.000 min
 Response: 27506155
 Conc: 22.35 ng/ml



#28 Decachlorobiphenyl
 R.T.: 9.040 min
 Delta R.T.: 0.000 min
 Response: 199386155
 Conc: 21.12 ng/ml