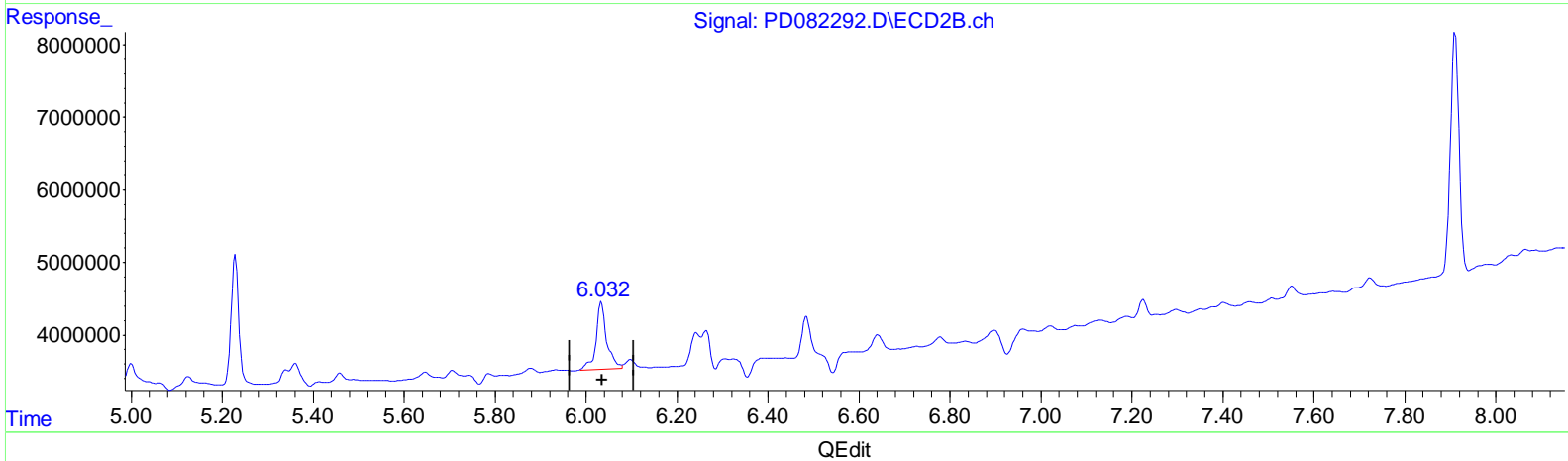
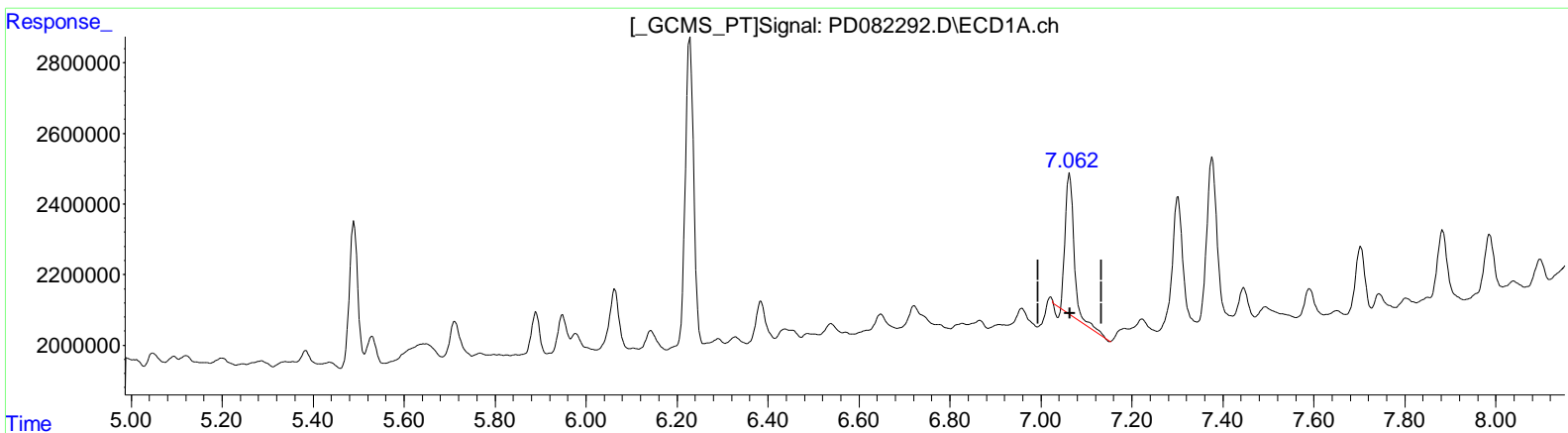


Data Path : Z:\pestpcbsrv\HPCHEM1\ECD_D\Data\PD040724\
 Data File : PD082292.D
 Signal(s) : Signal #1: ECD1A.ch Signal #2: ECD2B.ch
 Acq On : 07 Apr 2024 13:48
 Operator : ARVAJ
 Sample : P2018-01
 Misc :
 ALS Vial : 6 Sample Multiplier: 1

Integration File signal 1: autoint1.e
 Integration File signal 2: autoint2.e
 Quant Time: Apr 08 01:25:22 2024
 Quant Method : Z:\pestpcbsrv\HPCHEM1\ECD_D\Method\PD032924CLP.M
 Quant Title : GC Extractables
 QLast Update : Sat Mar 30 04:18:59 2024
 Response via : Initial Calibration
 Integrator: ChemStation

Volume Inj. : 1 µl
 Signal #1 Phase : ZB-MR1 Signal #2 Phase: ZB-MR2
 Signal #1 Info : 30M x 0.32mm x 0.5 Signal #2 Info : 30M x 0.32mm x 0.25µm



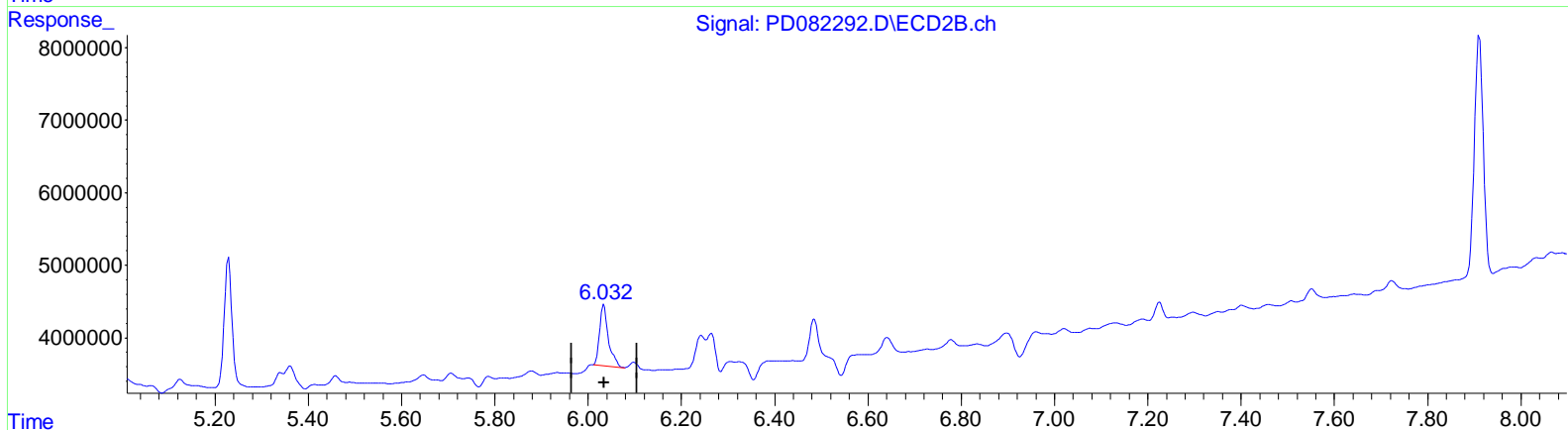
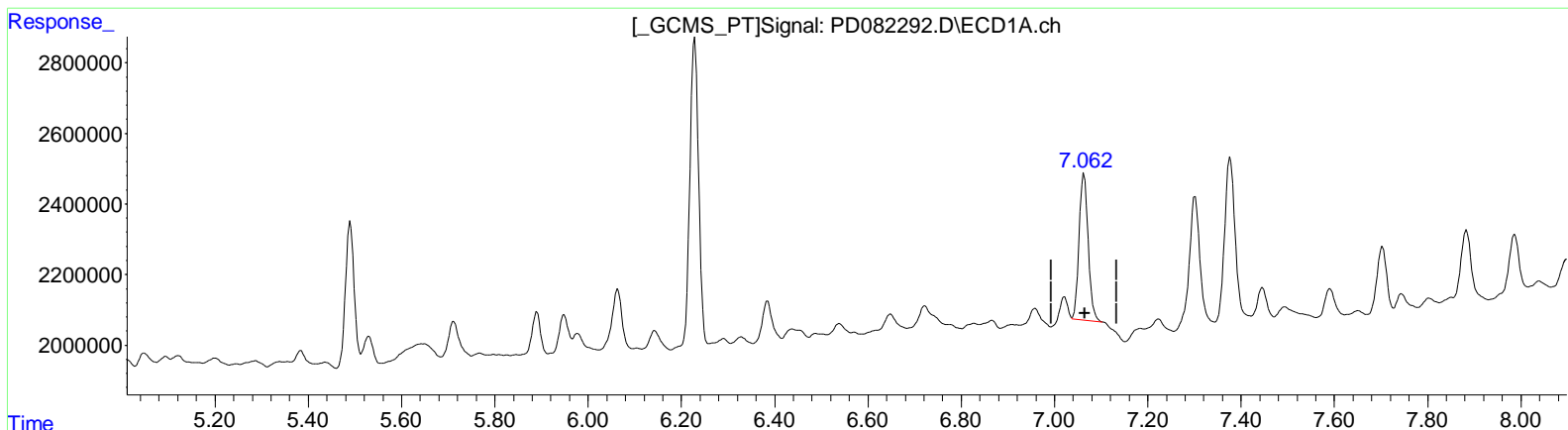
(17) 4,4'-DDT (MA)
 7.063min 3.518 ng/ml
 response 5471691

(17) 4,4'-DDT #2 (MA)
 6.034min 5.493 ng/ml
 response 15176772

Data Path : Z:\pestpcbsrv\HPCHEM1\ECD_D\Data\PD040724\
 Data File : PD082292.D
 Signal(s) : Signal #1: ECD1A.ch Signal #2: ECD2B.ch
 Acq On : 07 Apr 2024 13:48
 Operator : ARVAJ
 Sample : P2018-01
 Misc :
 ALS Vial : 6 Sample Multiplier: 1

Integration File signal 1: autoint1.e
 Integration File signal 2: autoint2.e
 Quant Time: Apr 08 01:25:22 2024
 Quant Method : Z:\pestpcbsrv\HPCHEM1\ECD_D\Method\PD032924CLP.M
 Quant Title : GC Extractables
 QLast Update : Sat Mar 30 04:18:59 2024
 Response via : Initial Calibration
 Integrator: ChemStation

Volume Inj. : 1 µl
 Signal #1 Phase : ZB-MR1 Signal #2 Phase: ZB-MR2
 Signal #1 Info : 30M x 0.32mm x 0.5 Signal #2 Info : 30M x 0.32mm x 0.25µm



QEdit

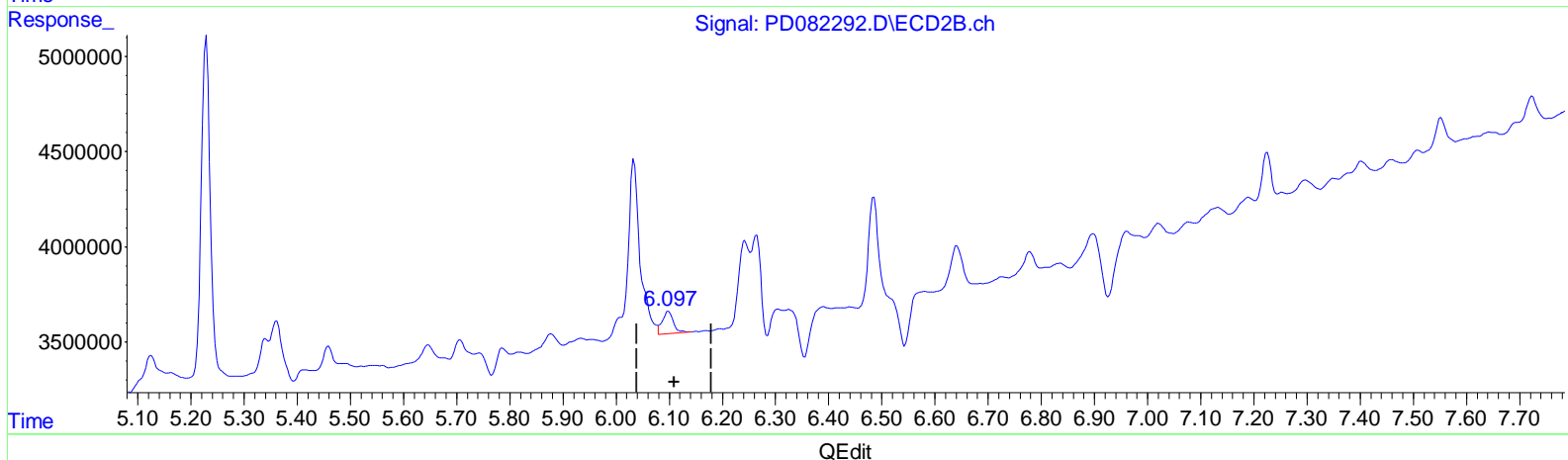
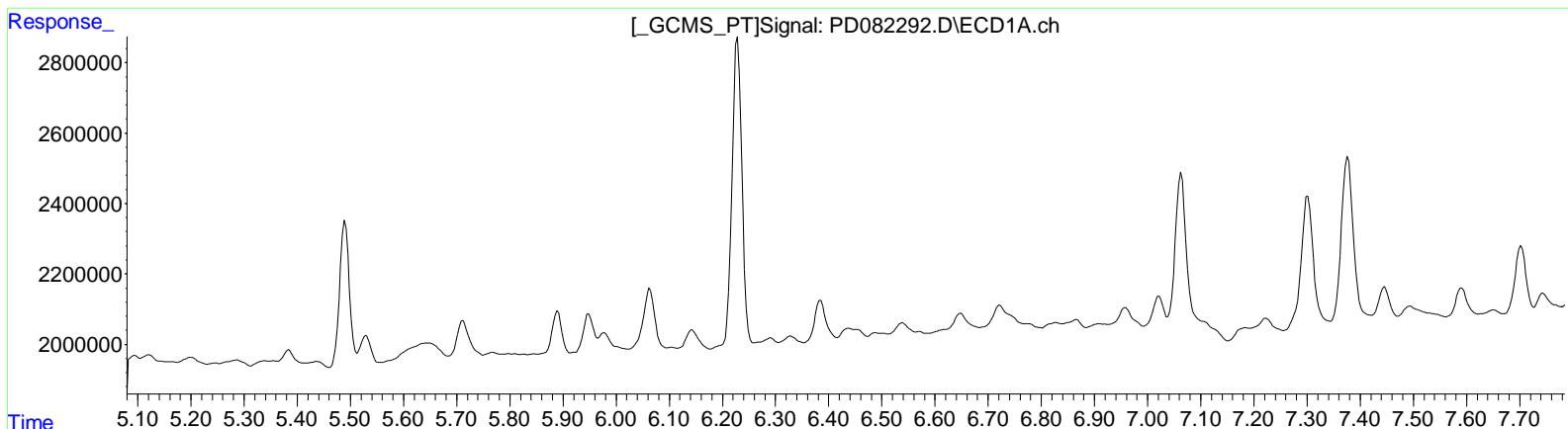
(17) 4,4'-DDT (MA)
 7.062min 3.594 ng/ml m
 response 5590467

(17) 4,4'-DDT #2 (MA)
 6.032min 4.077 ng/ml m
 response 11262634

Data Path : Z:\pestpcbsrv\HPCHEM1\ECD_D\Data\PD040724\
Data File : PD082292.D
Signal(s) : Signal #1: ECD1A.ch Signal #2: ECD2B.ch
Acq On : 07 Apr 2024 13:48
Operator : ARVAJ
Sample : P2018-01
Misc :
ALS Vial : 6 Sample Multiplier: 1

Integration File signal 1: autoint1.e
Integration File signal 2: autoint2.e
Quant Time: Apr 08 01:25:22 2024
Quant Method : Z:\pestpcbsrv\HPCHEM1\ECD_D\Method\PD032924CLP.M
Quant Title : GC Extractables
QLast Update : Sat Mar 30 04:18:59 2024
Response via : Initial Calibration
Integrator: ChemStation

Volume Inj. : 1 µl
Signal #1 Phase : ZB-MR1 Signal #2 Phase: ZB-MR2
Signal #1 Info : 30M x 0.32mm x 0.5 Signal #2 Info : 30M x 0.32mm x 0.25µm



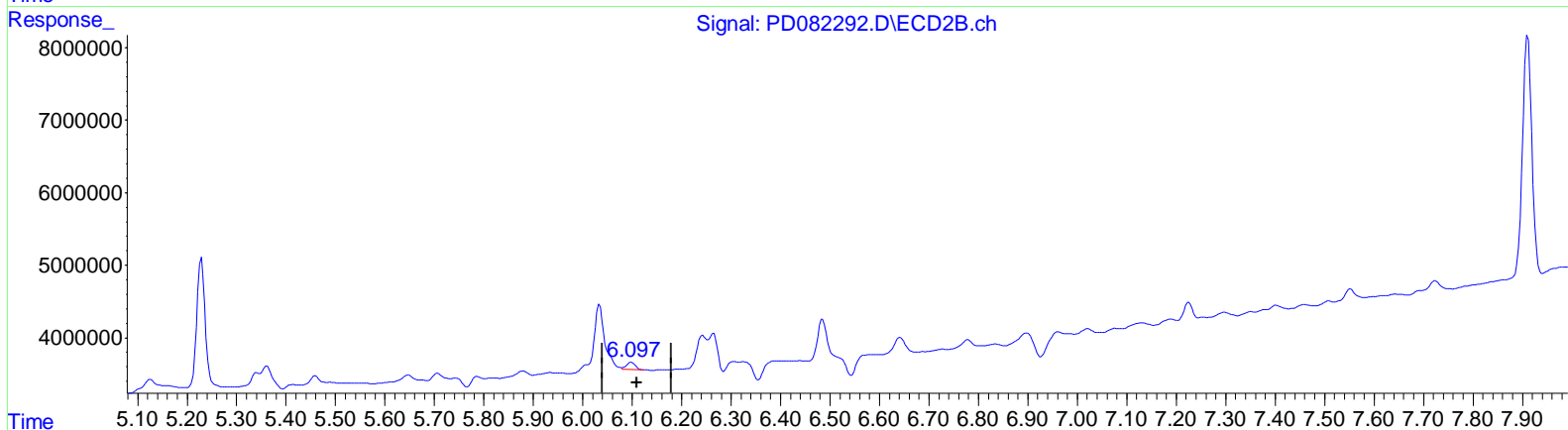
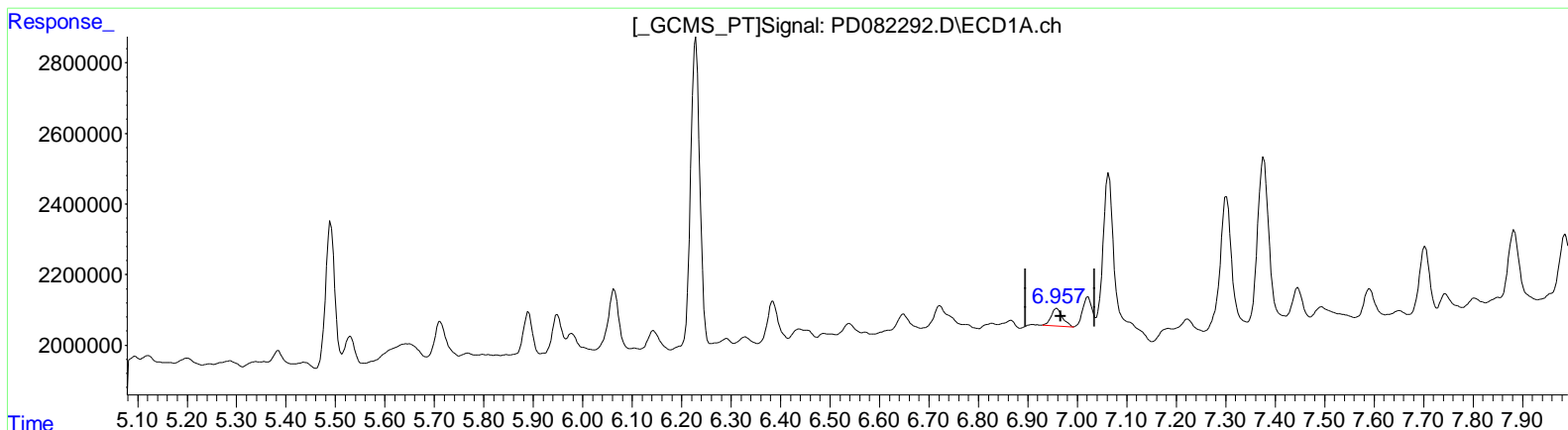
(18) Endrin aldehyde (B)
0.000min 0.000 ng/ml
response 0

(18) Endrin aldehyde #2 (B)
6.099min 0.778 ng/ml
response 1756683

Data Path : Z:\pestpcbsrv\HPCHEM1\ECD_D\Data\PD040724\
 Data File : PD082292.D
 Signal(s) : Signal #1: ECD1A.ch Signal #2: ECD2B.ch
 Acq On : 07 Apr 2024 13:48
 Operator : ARVAJ
 Sample : P2018-01
 Misc :
 ALS Vial : 6 Sample Multiplier: 1

Integration File signal 1: autoint1.e
 Integration File signal 2: autoint2.e
 Quant Time: Apr 08 01:25:22 2024
 Quant Method : Z:\pestpcbsrv\HPCHEM1\ECD_D\Method\PD032924CLP.M
 Quant Title : GC Extractables
 QLast Update : Sat Mar 30 04:18:59 2024
 Response via : Initial Calibration
 Integrator: ChemStation

Volume Inj. : 1 µl
 Signal #1 Phase : ZB-MR1 Signal #2 Phase: ZB-MR2
 Signal #1 Info : 30M x 0.32mm x0.5 Signal #2 Info : 30M x 0.32mm x 0.25µm



QEdit

(18) Endrin aldehyde (B)
 6.957min 0.596 ng/ml m
 response 790340

(18) Endrin aldehyde #2 (B)
 6.097min 0.540 ng/ml m
 response 1218349

Data Path : Z:\pestpcbsrv\HPCHEM1\ECD_D\Data\PD040724\
 Data File : PD082292.D
 Signal(s) : Signal #1: ECD1A.ch Signal #2: ECD2B.ch
 Acq On : 07 Apr 2024 13:48
 Operator : AR\AJ
 Sample : P2018-01
 Misc :
 ALS Vial : 6 Sample Multiplier: 1

Integration File signal 1: autoint1.e
 Integration File signal 2: autoint2.e
 Quant Time: Apr 08 01:25:22 2024
 Quant Method : Z:\pestpcbsrv\HPCHEM1\ECD_D\Method\PD032924CLP.M
 Quant Title : GC Extractables
 QLast Update : Sat Mar 30 04:18:59 2024
 Response via : Initial Calibration
 Integrator: ChemStation

Volume Inj. : 1 µl
 Signal #1 Phase : ZB-MR1 Signal #2 Phase: ZB-MR2
 Signal #1 Info : 30M x 0.32mm x0.5 Signal #2 Info : 30M x 0.32mm x 0.25µm

Compound	RT#1	RT#2	Resp#1	Resp#2	ng/ml	ng/ml

System Monitoring Compounds						
1) SA Tetrachlo...	3.566	2.777	23593164	50812913	15.954	15.189
27) SA Decachlor...	9.120	7.911	27621512	43289920	14.865	16.411
Target Compounds						
12) B 4,4'-DDE	6.229	5.229	11207774	20972378	5.503	6.152
13) MA Dieldrin	6.385	5.361	1479351	4010299	0.687	1.093 #
17) MA 4,4'-DDT	7.062	6.032	5590467	11262634	3.594m	4.077m
18) B Endrin al...	6.957	6.097	790340	1218349	0.596m	0.540m

(f)=RT Delta > 1/2 Window (#)=Amounts differ by > 25% (m)=manual int.

Data Path : Z:\pestpcbsrv\HPCHEM1\ECD_D\Data\PD040724\
 Data File : PD082292.D
 Signal(s) : Signal #1: ECD1A.ch Signal #2: ECD2B.ch
 Acq On : 07 Apr 2024 13:48
 Operator : ARVAJ
 Sample : P2018-01
 Misc :
 ALS Vial : 6 Sample Multiplier: 1

Integration File signal 1: autoint1.e
 Integration File signal 2: autoint2.e
 Quant Time: Apr 08 01:25:22 2024
 Quant Method : Z:\pestpcbsrv\HPCHEM1\ECD_D\Method\PD032924CLP.M
 Quant Title : GC Extractables
 QLast Update : Sat Mar 30 04:18:59 2024
 Response via : Initial Calibration
 Integrator: ChemStation

Volume Inj. : 1 µl
 Signal #1 Phase : ZB-MR1 Signal #2 Phase: ZB-MR2
 Signal #1 Info : 30M x 0.32mm x0.5 Signal #2 Info : 30M x 0.32mm x 0.25µm

