

Data Path : Z:\pestpcbsrv\HPCHEM1\ECD\_D\Data\PD040724\  
 Data File : PD082324.D  
 Signal(s) : Signal #1: ECD1A.ch Signal #2: ECD2B.ch  
 Acq On : 07 Apr 2024 21:33  
 Operator : AR\AJ  
 Sample : INDA349  
 Misc :  
 ALS Vial : 31 Sample Multiplier: 1

Instrument :  
 ECD\_D  
 ClientSampleId :  
 INDA3210

Integration File signal 1: autoint1.e  
 Integration File signal 2: autoint2.e  
 Quant Time: Apr 08 01:36:42 2024  
 Quant Method : Z:\pestpcbsrv\HPCHEM1\ECD\_D\Method\PD032924CLP.M  
 Quant Title : GC Extractables  
 QLast Update : Sat Mar 30 04:18:59 2024  
 Response via : Initial Calibration  
 Integrator: ChemStation

Volume Inj. : 1 µl  
 Signal #1 Phase : ZB-MR2 Signal #2 Phase: ZB-MR2  
 Signal #1 Info : 30M x 0.32mm x0.5 Signal #2 Info : 30M x 0.32mm x 0.25µm

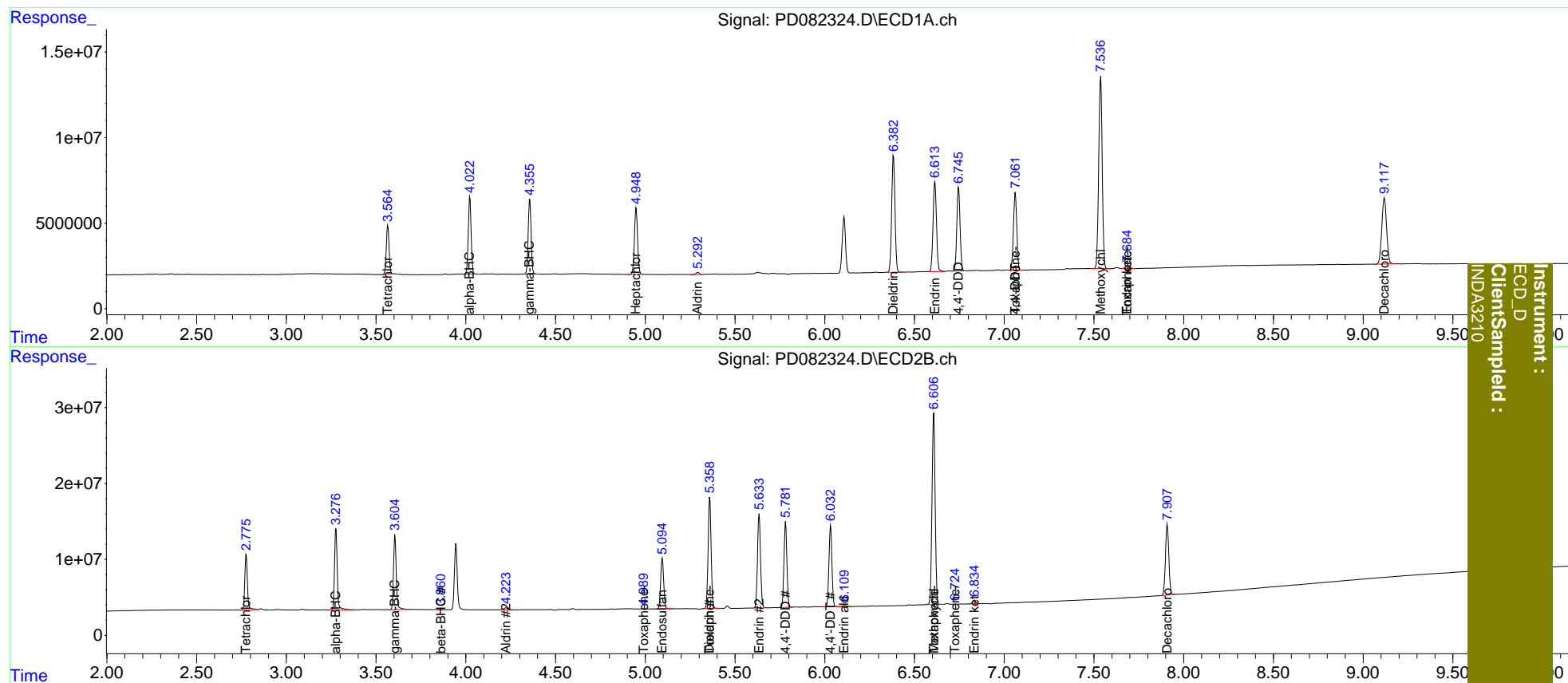
Compound	RT#1	RT#2	Resp#1	Resp#2	ng/ml	ng/ml
System Monitoring Compounds						
1) SA Tetrachlo...	3.566	2.777	30552395	74245004	20.660	22.193
27) SA Decachlor...	9.118	7.909	71785840	121.7E6	38.633	46.150
Target Compounds						
2) A alpha-BHC	4.023	3.277	50114660	113.4E6	20.092	22.407
3) MA gamma-BHC...	4.357	3.606	49605641	103.4E6	20.725	22.384
4) MA Heptachlor	4.949	0.000	47523135	0	19.173	N.D. #
5) MB Aldrin	5.293	4.224	1501300	3022848	0.641	0.721
6) B beta-BHC	0.000	3.861f	0	343770	N.D.	0.178
8) B Heptachlo...	0.000	4.686f	0	66333	N.D.	<MDL
9) A Endosulfan I	0.000	5.095	0	77645840	N.D.	22.869
10) B trans-Chl...	0.000	4.990	0	89898	N.D.	<MDL
11) B cis-Chlor...	0.000	4.990f	0	89898	N.D.	<MDL
12) B 4,4'-DDE	0.000	5.232	0	226856	N.D.	<MDL
13) MA Dieldrin	6.383	5.360	87207211	170.8E6	40.485	46.528
14) MA Endrin	6.614	5.635	70188828	143.5E6	39.533	46.358
15) B Endosulfa...	0.000	5.945	0	91593	N.D.	<MDL
16) A 4,4'-DDD	6.746	5.782	61215509	128.4E6	40.836	47.653
17) MA 4,4'-DDT	7.062	6.033	57824714	124.2E6	37.178	44.965
18) B Endrin al...	0.000	6.110	0	2013758	N.D.	0.892
19) B Endosulfa...	0.000	6.329	0	174492	N.D.	<MDL
20) A Methoxychlor	7.538	6.608	152.6E6	307.3E6	186.211	220.482
21) B Endrin ke...	7.686	6.835	1954060	4869330	1.143	1.522 #
22) Toxaphene-1	0.000	4.990	0	89898	N.D.	4.983
23) Toxaphene-2	0.000	5.360	0	170.8E6	N.D.	9219.145
24) Toxaphene-3	7.062f	6.608	57824714	307.3E6	1215.263	4757.072 #
25) Toxaphene-4	0.000	6.726	0	36871	N.D.	0.417
26) Toxaphene-5	7.686f	0.000	1954060	0	76.963	N.D. #

(f)=RT Delta > 1/2 Window (#)=Amounts differ by > 25% (m)=manual int.

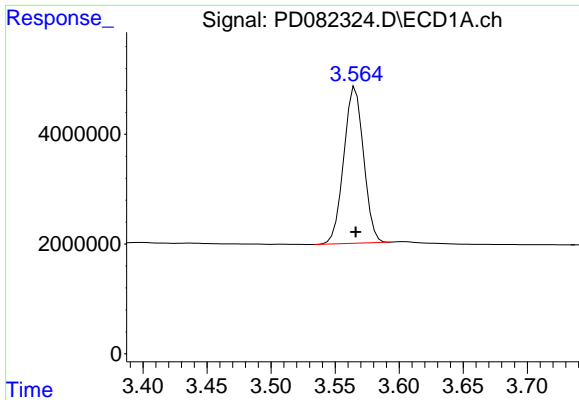
Data Path : Z:\pestpcbsrv\HPCHEM1\ECD\_D\Data\PD040724\  
 Data File : PD082324.D  
 Signal(s) : Signal #1: ECD1A.ch Signal #2: ECD2B.ch  
 Acq On : 07 Apr 2024 21:33  
 Operator : AR\AJ  
 Sample : INDA349  
 Misc :  
 ALS Vial : 31 Sample Multiplier: 1

Integration File signal 1: autoint1.e  
 Integration File signal 2: autoint2.e  
 Quant Time: Apr 08 01:36:42 2024  
 Quant Method : Z:\pestpcbsrv\HPCHEM1\ECD\_D\Method\PD032924CLP.M  
 Quant Title : GC Extractables  
 QLast Update : Sat Mar 30 04:18:59 2024  
 Response via : Initial Calibration  
 Integrator: ChemStation

Volume Inj. : 1 µl  
 Signal #1 Phase : ZB-MR1 Signal #2 Phase: ZB-MR2  
 Signal #1 Info : 30M x 0.32mm x0.5 Signal #2 Info : 30M x 0.32mm x 0.25µm



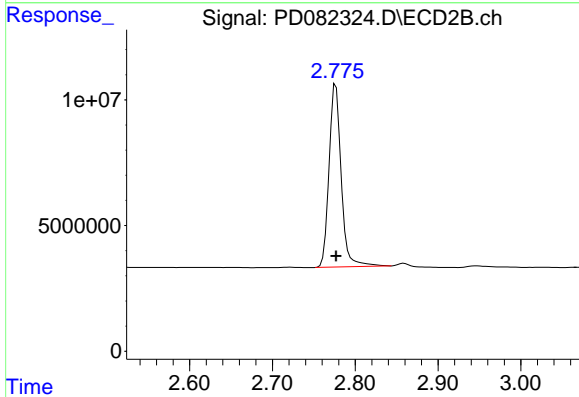
Instrument :  
 ECD\_D  
 ClientSampled :  
 INDA3210



#1 Tetrachloro-m-xylene

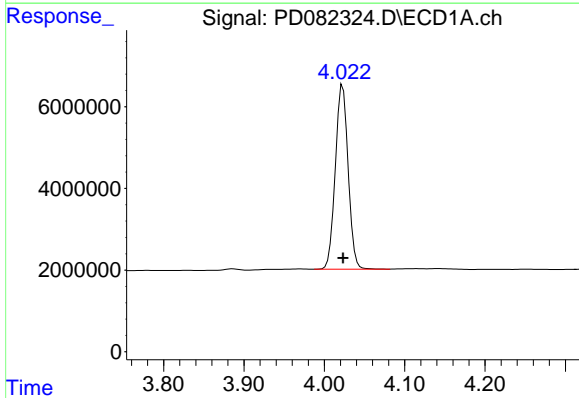
R.T.: 3.566 min  
 Delta R.T.: 0.000 min  
 Response: 30552395  
 Conc: 20.66 ng/ml

Instrument :  
 ECD\_D  
 ClientSampleId :  
 INDA3210



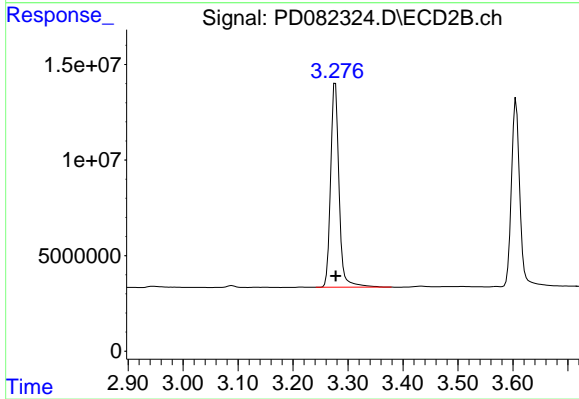
#1 Tetrachloro-m-xylene

R.T.: 2.777 min  
 Delta R.T.: 0.000 min  
 Response: 74245004  
 Conc: 22.19 ng/ml



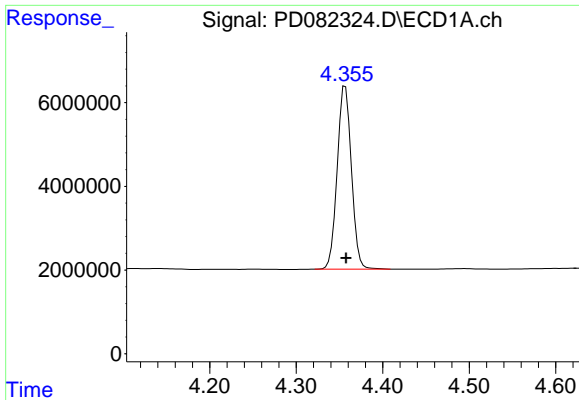
#2 alpha-BHC

R.T.: 4.023 min  
 Delta R.T.: 0.000 min  
 Response: 50114660  
 Conc: 20.09 ng/ml



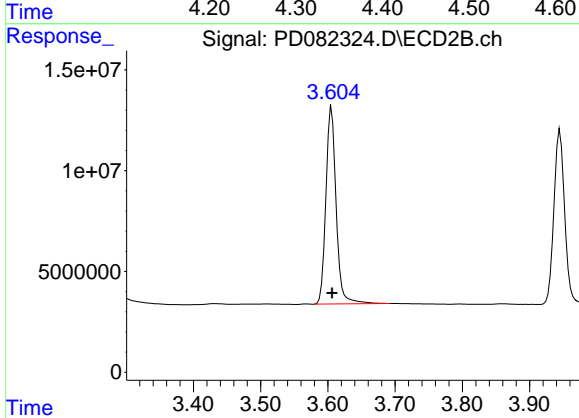
#2 alpha-BHC

R.T.: 3.277 min  
 Delta R.T.: 0.000 min  
 Response: 113445842  
 Conc: 22.41 ng/ml

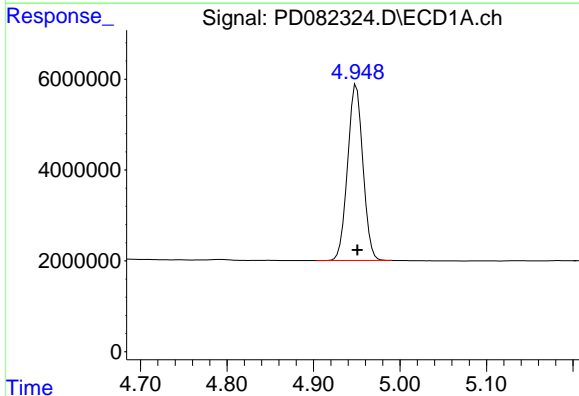


#3 gamma-BHC (Lindane)  
 R.T.: 4.357 min  
 Delta R.T.: 0.000 min  
 Response: 49605641  
 Conc: 20.73 ng/ml

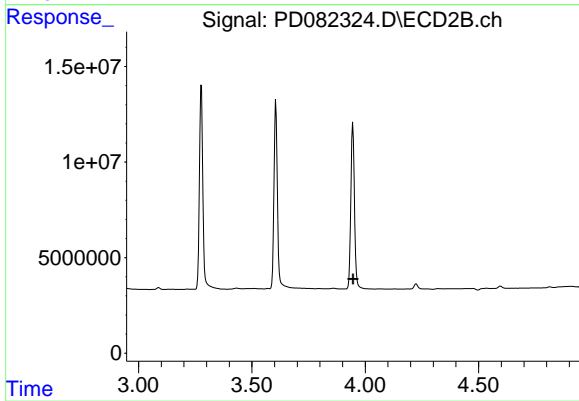
Instrument :  
 ECD\_D  
 ClientSampleId :  
 INDA3210



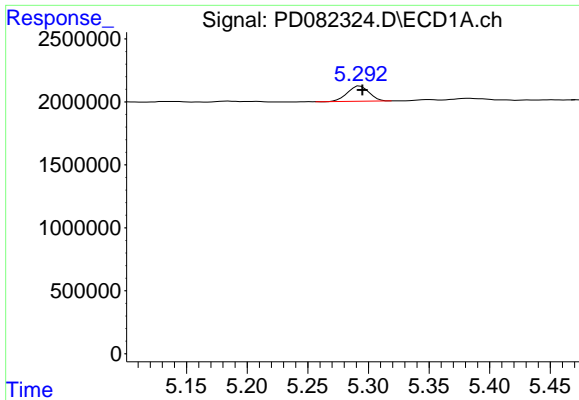
#3 gamma-BHC (Lindane)  
 R.T.: 3.606 min  
 Delta R.T.: 0.000 min  
 Response: 103395854  
 Conc: 22.38 ng/ml



#4 Heptachlor  
 R.T.: 4.949 min  
 Delta R.T.: -0.001 min  
 Response: 47523135  
 Conc: 19.17 ng/ml

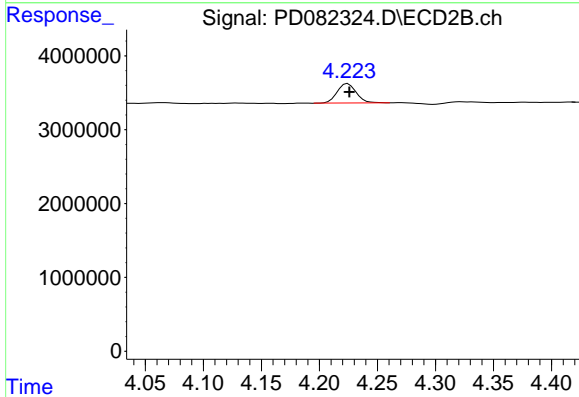


#4 Heptachlor  
 R.T.: 0.000 min  
 Exp R.T. : 3.946 min  
 Response: 0  
 Conc: N.D.

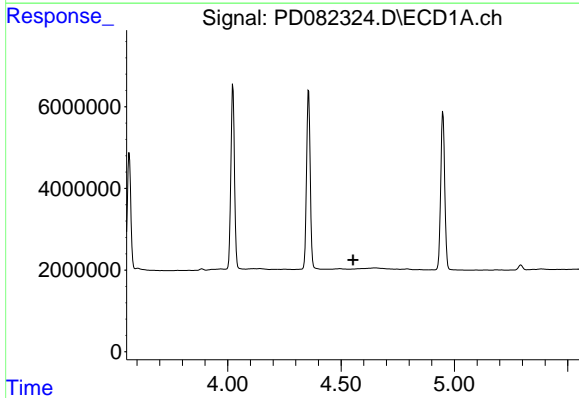


#5 Aldrin  
 R.T.: 5.293 min  
 Delta R.T.: -0.002 min  
 Response: 1501300  
 Conc: 0.64 ng/ml

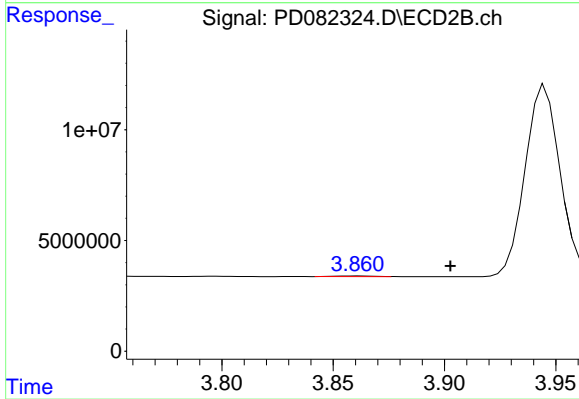
Instrument :  
 ECD\_D  
 ClientSampleId :  
 INDA3210



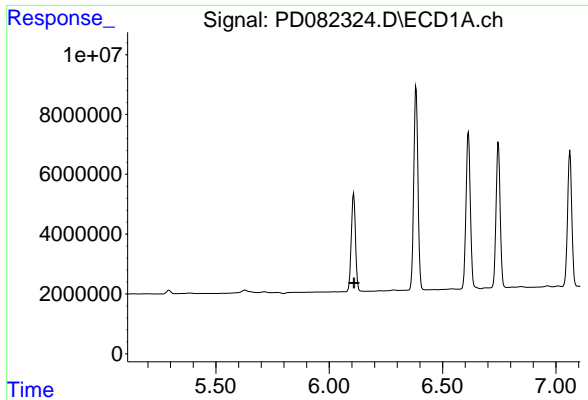
#5 Aldrin  
 R.T.: 4.224 min  
 Delta R.T.: -0.001 min  
 Response: 3022848  
 Conc: 0.72 ng/ml



#6 beta-BHC  
 R.T.: 0.000 min  
 Exp R.T. : 4.554 min  
 Response: 0  
 Conc: N.D.



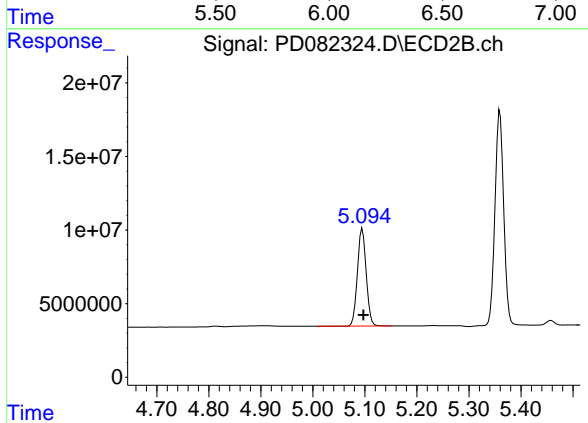
#6 beta-BHC  
 R.T.: 3.861 min  
 Delta R.T.: -0.042 min  
 Response: 343770  
 Conc: 0.18 ng/ml



#9 Endosulfan I

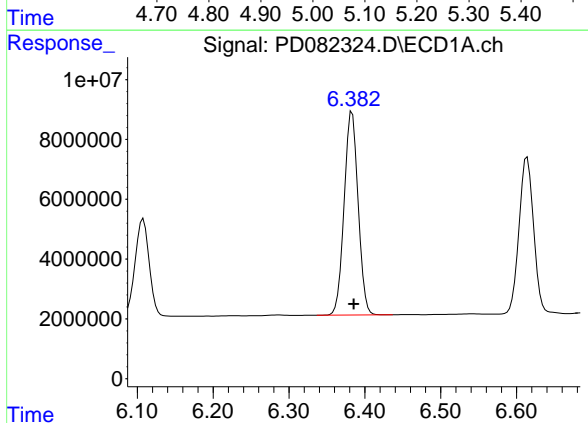
R.T.: 0.000 min  
 Exp R.T.: 6.110 min  
 Response: 0  
 Conc: N.D.

Instrument :  
 ECD\_D  
 ClientSampleId :  
 INDA3210



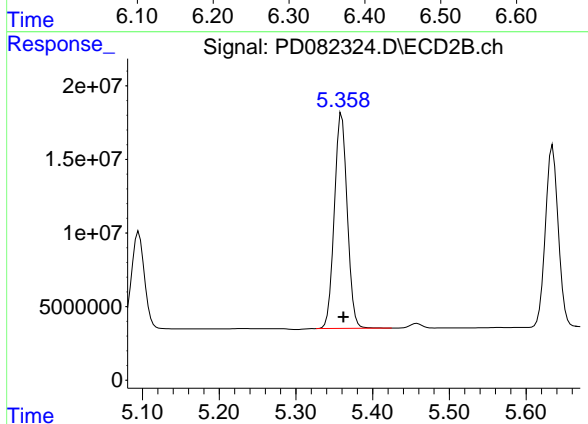
#9 Endosulfan I

R.T.: 5.095 min  
 Delta R.T.: -0.002 min  
 Response: 77645840  
 Conc: 22.87 ng/ml



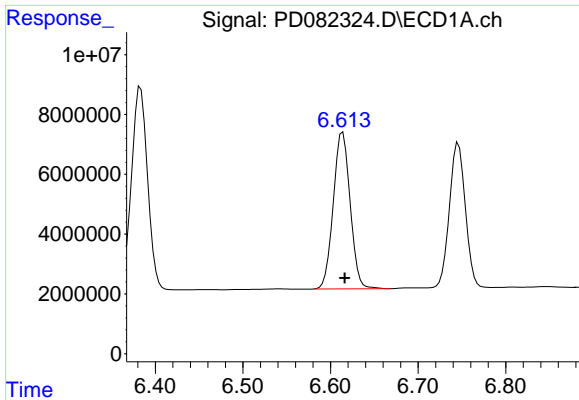
#13 Dieldrin

R.T.: 6.383 min  
 Delta R.T.: -0.002 min  
 Response: 87207211  
 Conc: 40.49 ng/ml



#13 Dieldrin

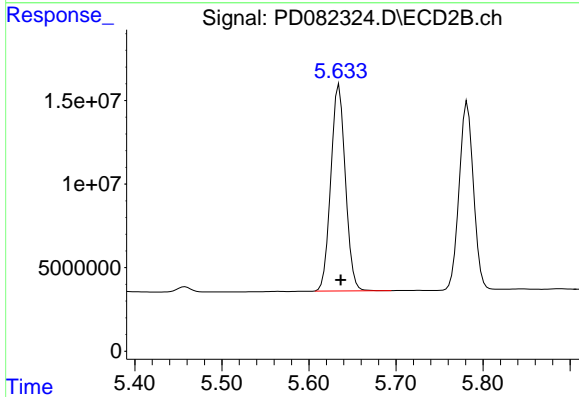
R.T.: 5.360 min  
 Delta R.T.: -0.002 min  
 Response: 170793713  
 Conc: 46.53 ng/ml



#14 Endrin

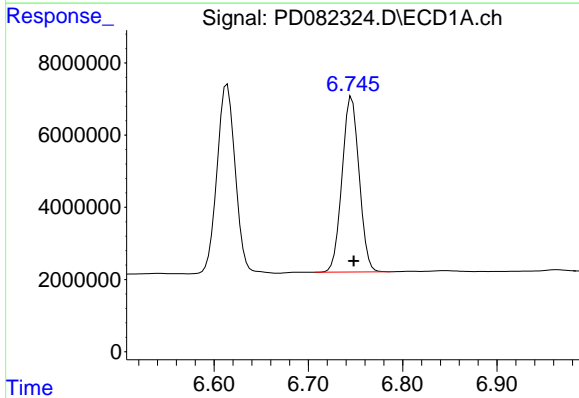
R.T.: 6.614 min  
 Delta R.T.: -0.002 min  
 Response: 70188828  
 Conc: 39.53 ng/ml

Instrument :  
 ECD\_D  
 ClientSampleId :  
 INDA3210



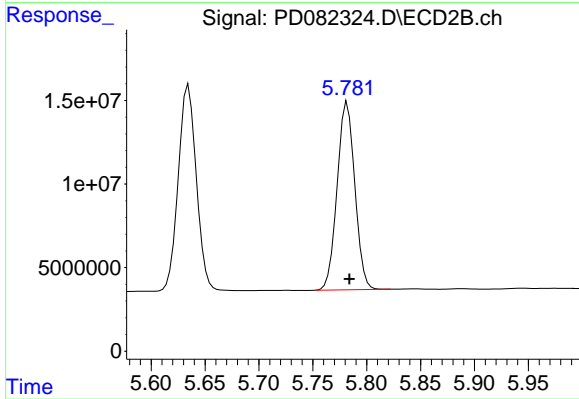
#14 Endrin

R.T.: 5.635 min  
 Delta R.T.: -0.002 min  
 Response: 143499760  
 Conc: 46.36 ng/ml



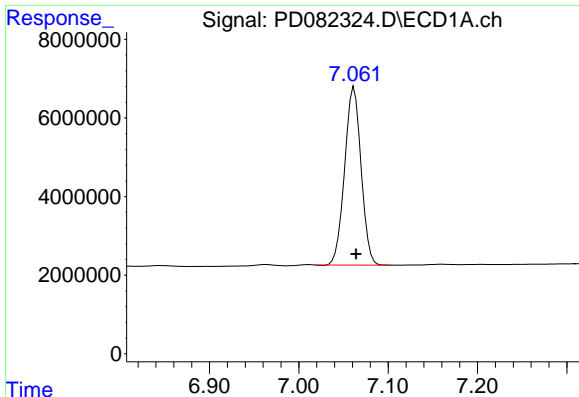
#16 4,4'-DDD

R.T.: 6.746 min  
 Delta R.T.: -0.002 min  
 Response: 61215509  
 Conc: 40.84 ng/ml



#16 4,4'-DDD

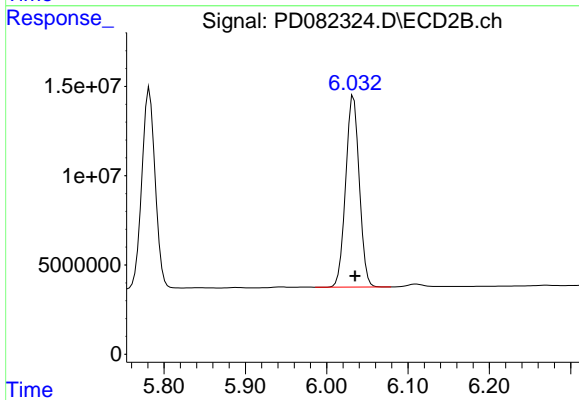
R.T.: 5.782 min  
 Delta R.T.: -0.002 min  
 Response: 128370798  
 Conc: 47.65 ng/ml



#17 4,4'-DDT

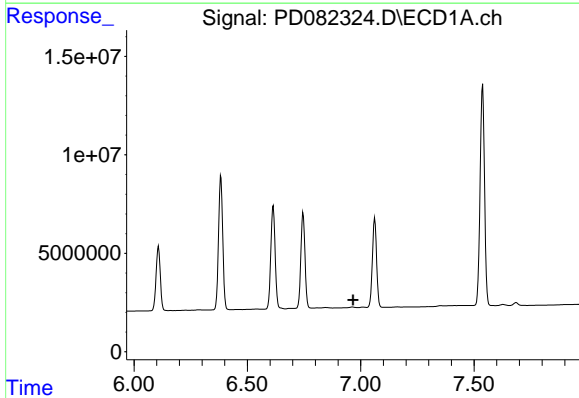
R.T.: 7.062 min  
 Delta R.T.: -0.002 min  
 Response: 57824714  
 Conc: 37.18 ng/ml

Instrument :  
 ECD\_D  
 ClientSampleId :  
 INDA3210



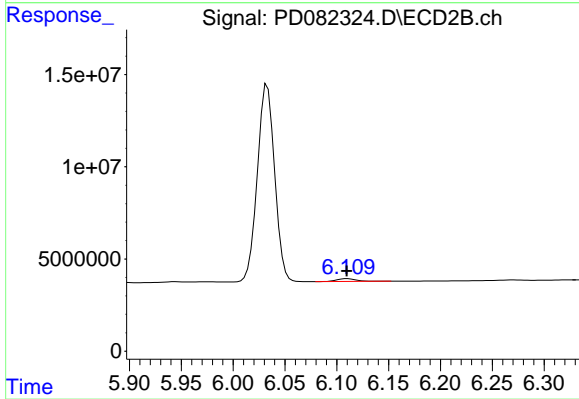
#17 4,4'-DDT

R.T.: 6.033 min  
 Delta R.T.: -0.002 min  
 Response: 124230365  
 Conc: 44.97 ng/ml



#18 Endrin aldehyde

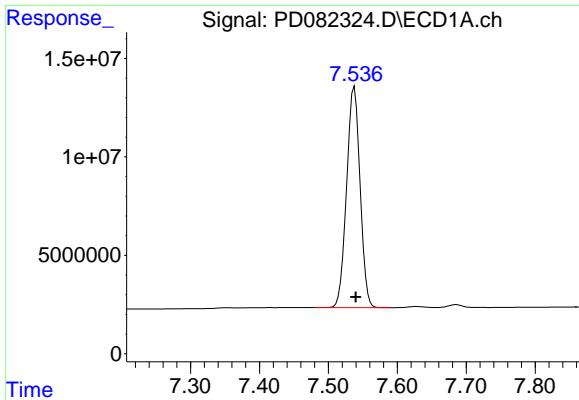
R.T.: 0.000 min  
 Exp R.T. : 6.966 min  
 Response: 0  
 Conc: N.D.



#18 Endrin aldehyde

R.T.: 6.110 min  
 Delta R.T.: 0.000 min  
 Response: 2013758  
 Conc: 0.89 ng/ml

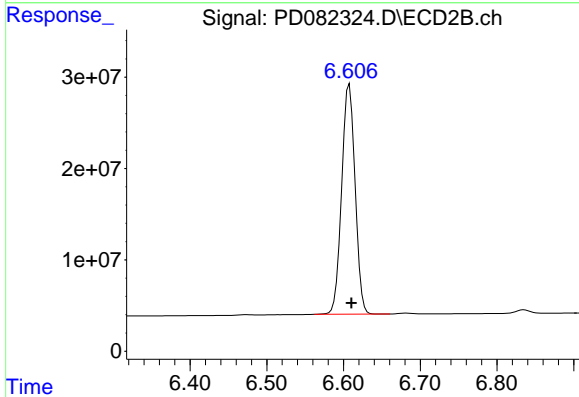




#20 Methoxychlor

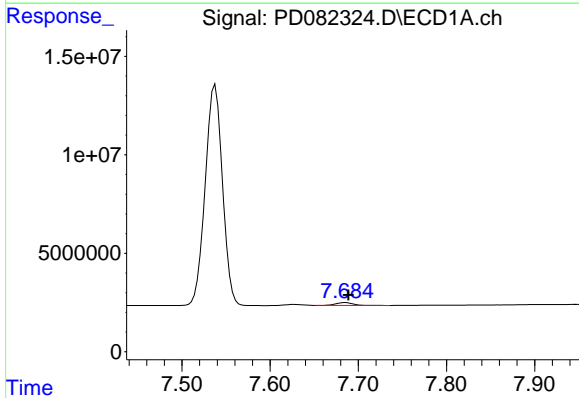
R.T.: 7.538 min  
 Delta R.T.: -0.002 min  
 Response: 152609862  
 Conc: 186.21 ng/ml

Instrument :  
 ECD\_D  
 ClientSampleId :  
 INDA3210



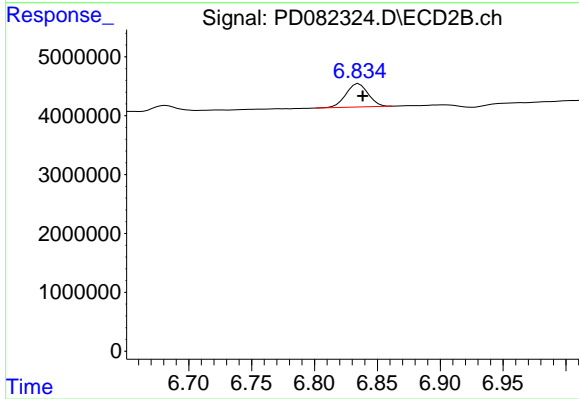
#20 Methoxychlor

R.T.: 6.608 min  
 Delta R.T.: -0.003 min  
 Response: 307319604  
 Conc: 220.48 ng/ml



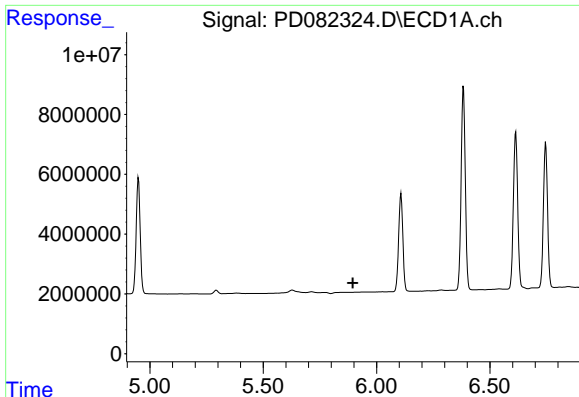
#21 Endrin ketone

R.T.: 7.686 min  
 Delta R.T.: -0.003 min  
 Response: 1954060  
 Conc: 1.14 ng/ml



#21 Endrin ketone

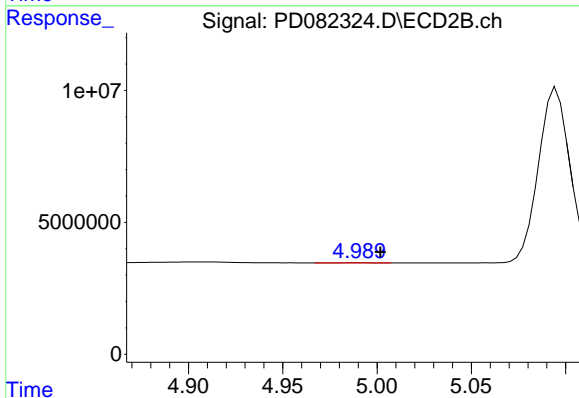
R.T.: 6.835 min  
 Delta R.T.: -0.003 min  
 Response: 4869330  
 Conc: 1.52 ng/ml



#22 Toxaphene-1

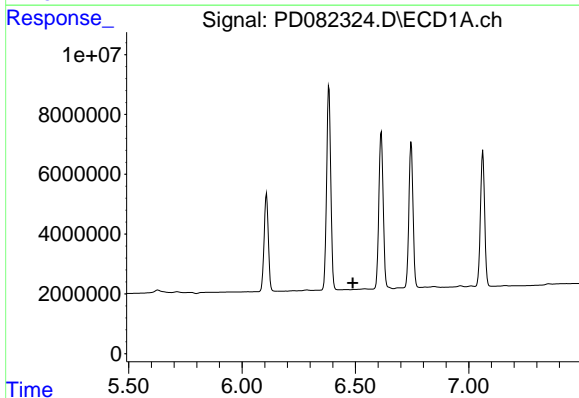
R.T.: 0.000 min  
 Exp R.T.: 5.896 min  
 Response: 0  
 Conc: N.D.

Instrument :  
 ECD\_D  
 ClientSampleId :  
 INDA3210



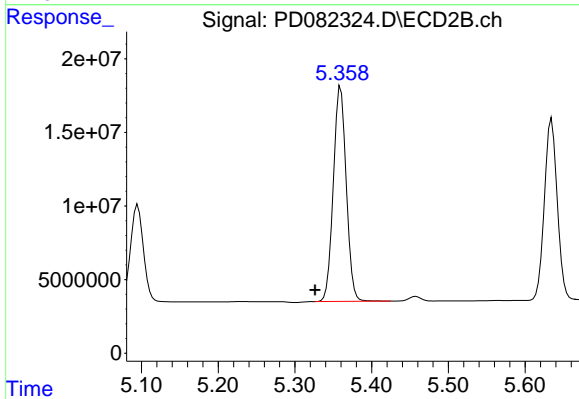
#22 Toxaphene-1

R.T.: 4.990 min  
 Delta R.T.: -0.012 min  
 Response: 89898  
 Conc: 4.98 ng/ml



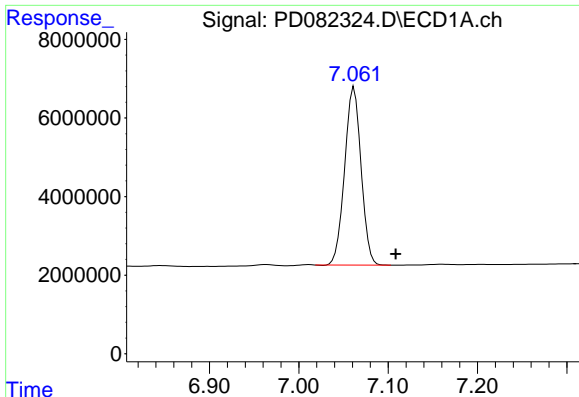
#23 Toxaphene-2

R.T.: 0.000 min  
 Exp R.T.: 6.489 min  
 Response: 0  
 Conc: N.D.



#23 Toxaphene-2

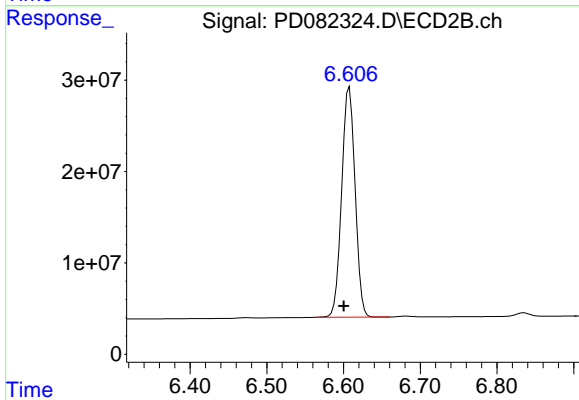
R.T.: 5.360 min  
 Delta R.T.: 0.033 min  
 Response: 170793713  
 Conc: 9219.15 ng/ml



#24 Toxaphene-3

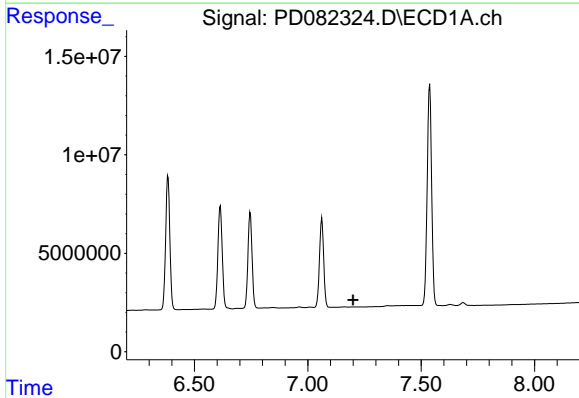
R.T.: 7.062 min  
 Delta R.T.: -0.046 min  
 Response: 57824714  
 Conc: 1215.26 ng/m

Instrument :  
 ECD\_D  
 ClientSampleId :  
 INDA3210



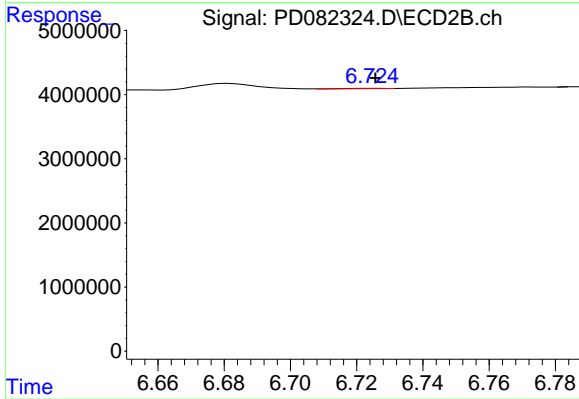
#24 Toxaphene-3

R.T.: 6.608 min  
 Delta R.T.: 0.007 min  
 Response: 307319604  
 Conc: 4757.07 ng/ml



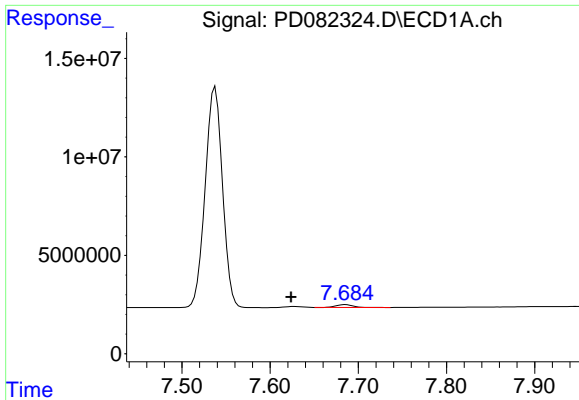
#25 Toxaphene-4

R.T.: 0.000 min  
 Exp R.T. : 7.200 min  
 Response: 0  
 Conc: N.D.



#25 Toxaphene-4

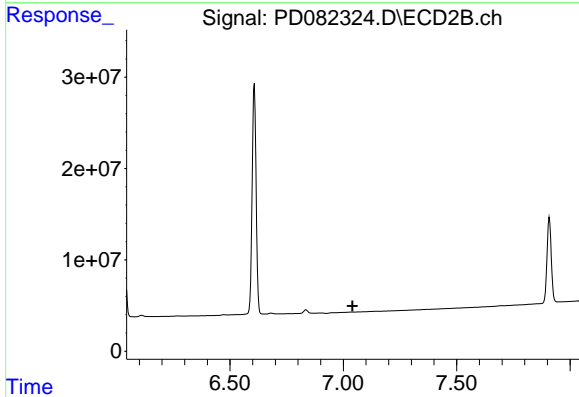
R.T.: 6.726 min  
 Delta R.T.: 0.000 min  
 Response: 36871  
 Conc: 0.42 ng/ml



#26 Toxaphene-5

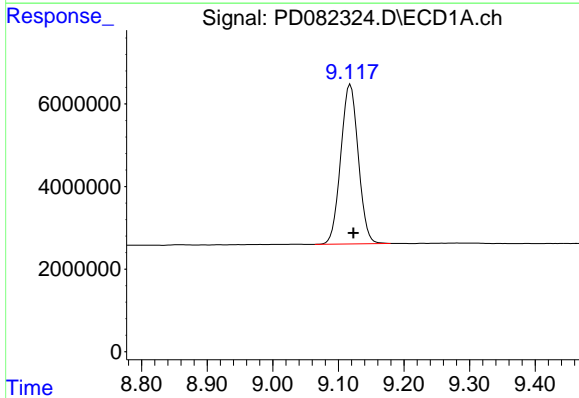
R.T.: 7.686 min  
 Delta R.T.: 0.062 min  
 Response: 1954060  
 Conc: 76.96 ng/ml

Instrument :  
 ECD\_D  
 ClientSampleId :  
 INDA3210



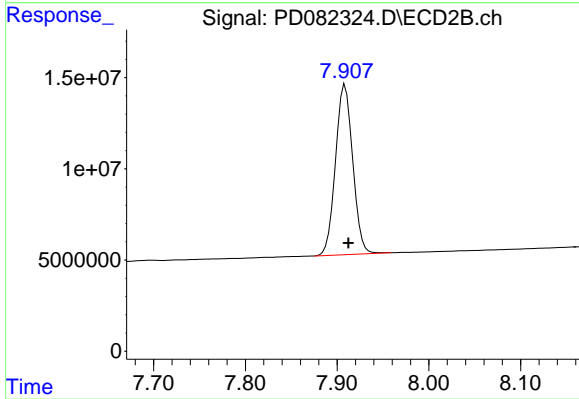
#26 Toxaphene-5

R.T.: 0.000 min  
 Exp R.T. : 7.041 min  
 Response: 0  
 Conc: N.D.



#27 Decachlorobiphenyl

R.T.: 9.118 min  
 Delta R.T.: -0.005 min  
 Response: 71785840  
 Conc: 38.63 ng/ml



#27 Decachlorobiphenyl

R.T.: 7.909 min  
 Delta R.T.: -0.004 min  
 Response: 121737209  
 Conc: 46.15 ng/ml