

Data Path : Z:\pestpcbsrv\HPCHEM1\ECD_D\Data\PD040819\
 Data File : PD052757.D
 Signal(s) : Signal #1: ECD1A.CH Signal #2: ECD2B.CH
 Acq On : 08 Apr 2019 12:27
 Operator : AJ\SJ
 Sample : TOXAPH401
 Misc :
 ALS Vial : 7 Sample Multiplier: 1

Instrument :
 ECD_D
 ClientSampleId :

Integration File signal 1: autoint1.e
 Integration File signal 2: autoint2.e
 Quant Time: Apr 09 06:32:25 2019
 Quant Method : Z:\pestpcbsrv\HPCHEM1\ECD_D\Method\PD040819CLP.M
 Quant Title : GC Extractables
 QLast Update : Tue Apr 09 06:30:41 2019
 Response via : Initial Calibration
 Integrator: ChemStation 6890 Scale Mode: Large solvent peaks clipped

Volume Inj. : 1 µl
 Signal #1 Phase : ZB-MR2 Signal #2 Phase: ZB-MR1
 Signal #1 Info : 30M x 0.32mm x0.2 Signal #2 Info : 30M x 0.32mm x 0.50µm

Compound	RT#1	RT#2	Resp#1	Resp#2	ng/ml	ng/ml

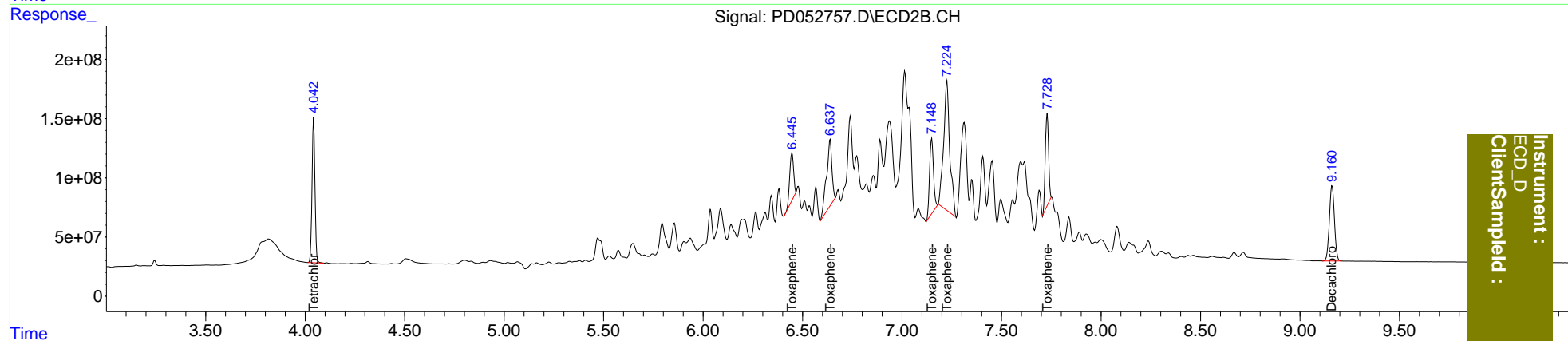
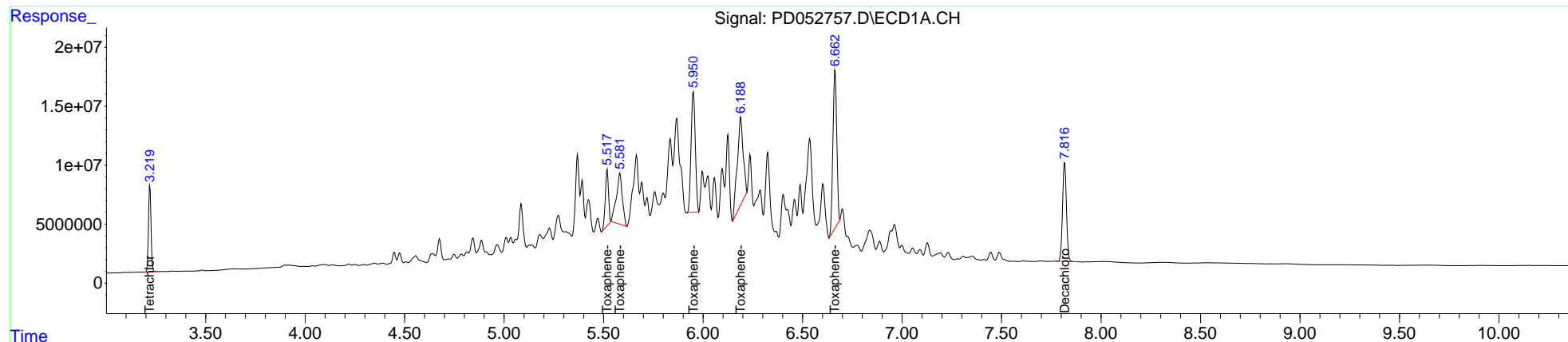
System Monitoring Compounds						
1) SA Tetrachlo...	3.220	4.043	64671637	1259.9E6	40.419	37.873
27) SA Decachlor...	7.817	9.161	114.9E6	1127.1E6	78.057	75.803
Target Compounds						
22) Toxaphene-1	5.518	6.447	53201350	538.2E6	4052.293	3711.667
23) Toxaphene-2	5.582	6.639	90782395	1057.1E6	4115.847	3848.339
24) Toxaphene-3	5.951	7.149	150.1E6	865.3E6	4069.881	3742.500
25) Toxaphene-4	6.189	7.226	151.2E6	2344.6E6	4110.494	3824.842
26) Toxaphene-5	6.664	7.730	180.5E6	912.9E6	4132.192	3945.743

(f)=RT Delta > 1/2 Window (#)=Amounts differ by > 25% (m)=manual int.

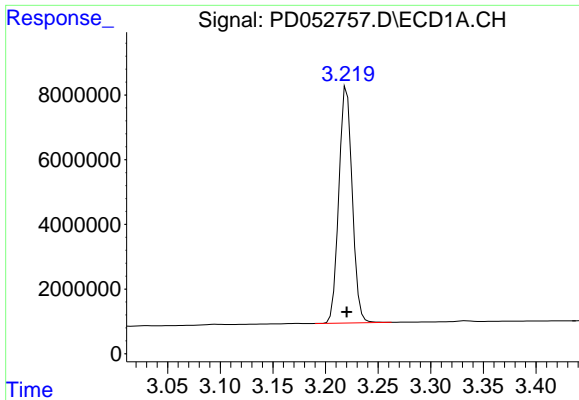
Data Path : Z:\pestpcbsrv\HPCHEM1\ECD_D\Data\PD040819\
 Data File : PD052757.D
 Signal(s) : Signal #1: ECD1A.CH Signal #2: ECD2B.CH
 Acq On : 08 Apr 2019 12:27
 Operator : AJ\SJ
 Sample : TOXAPH401
 Misc :
 ALS Vial : 7 Sample Multiplier: 1

Integration File signal 1: autoint1.e
 Integration File signal 2: autoint2.e
 Quant Time: Apr 09 06:32:25 2019
 Quant Method : Z:\pestpcbsrv\HPCHEM1\ECD_D\Method\PD040819CLP.M
 Quant Title : GC Extractables
 QLast Update : Tue Apr 09 06:30:41 2019
 Response via : Initial Calibration
 Integrator: ChemStation 6890 Scale Mode: Large solvent peaks clipped

Volume Inj. : 1 µl
 Signal #1 Phase : ZB-MR2 Signal #2 Phase: ZB-MR1
 Signal #1 Info : 30M x 0.32mm x0.2 Signal #2 Info : 30M x 0.32mm x 0.50µm

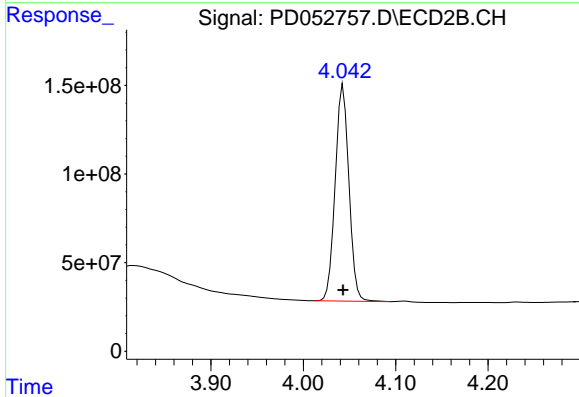


Instrument :
 ECD_D
 ClientSampleId :

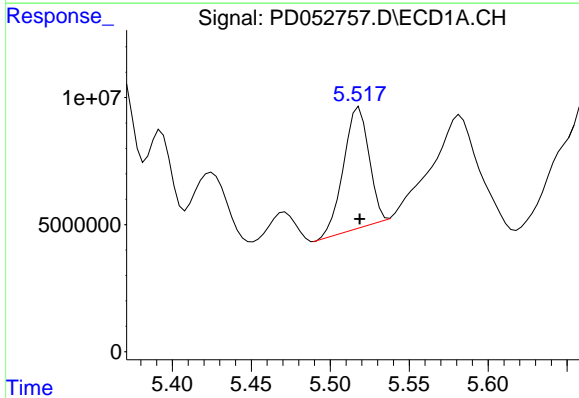


#1 Tetrachloro-m-xylene
 R.T.: 3.220 min
 Delta R.T.: 0.000 min
 Response: 64671637
 Conc: 40.42 ng/ml

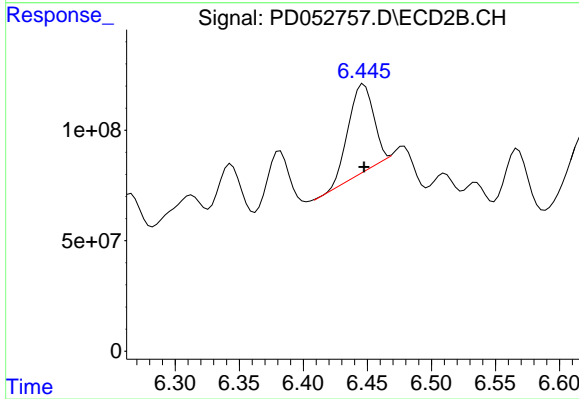
Instrument :
 ECD_D
 ClientSampleId :



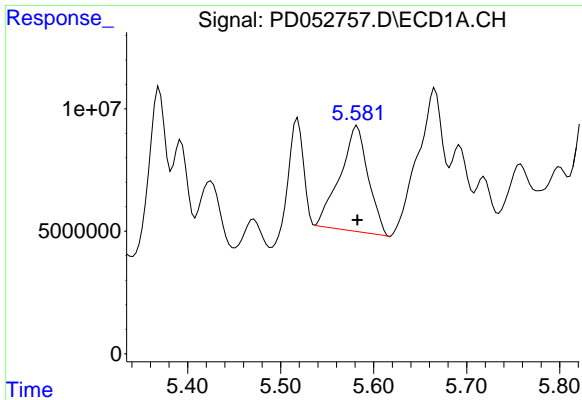
#1 Tetrachloro-m-xylene
 R.T.: 4.043 min
 Delta R.T.: 0.000 min
 Response: 1259918593
 Conc: 37.87 ng/ml



#22 Toxaphene-1
 R.T.: 5.518 min
 Delta R.T.: 0.000 min
 Response: 53201350
 Conc: 4052.29 ng/ml



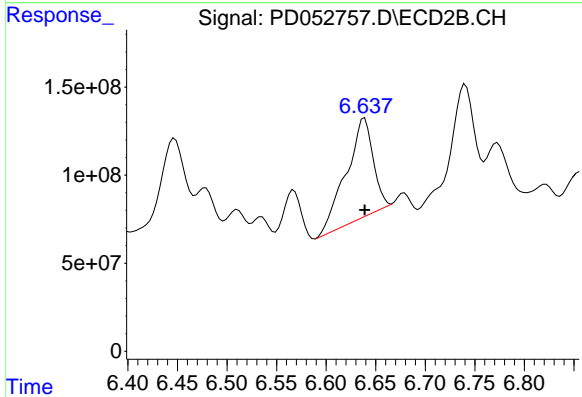
#22 Toxaphene-1
 R.T.: 6.447 min
 Delta R.T.: 0.000 min
 Response: 538186017
 Conc: 3711.67 ng/ml



#23 Toxaphene-2

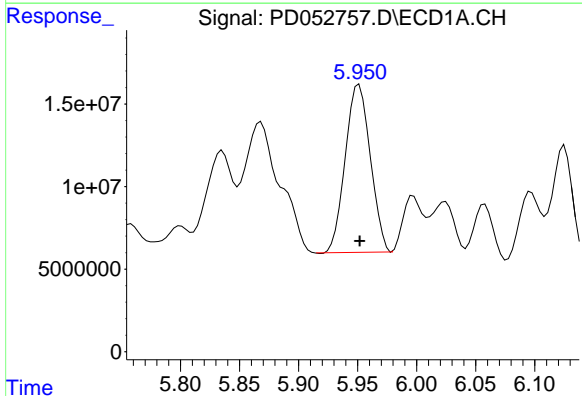
R.T.: 5.582 min
Delta R.T.: 0.000 min
Response: 90782395
Conc: 4115.85 ng/ml

Instrument :
ECD_D
ClientSampled :



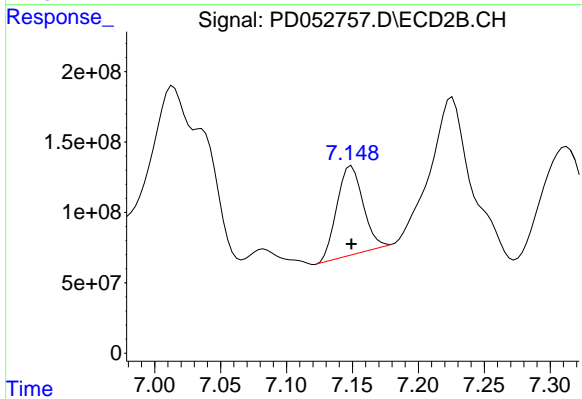
#23 Toxaphene-2

R.T.: 6.639 min
Delta R.T.: 0.000 min
Response: 1057125381
Conc: 3848.34 ng/ml



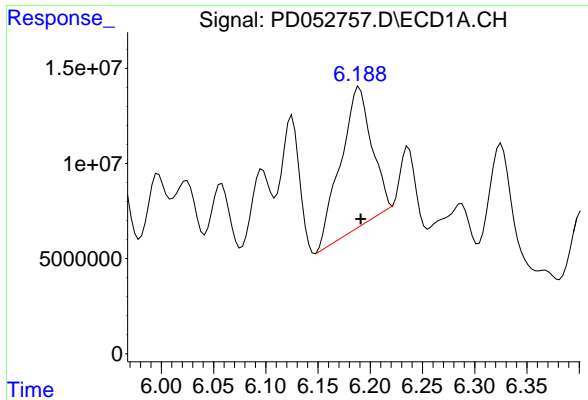
#24 Toxaphene-3

R.T.: 5.951 min
Delta R.T.: 0.000 min
Response: 150090228
Conc: 4069.88 ng/ml



#24 Toxaphene-3

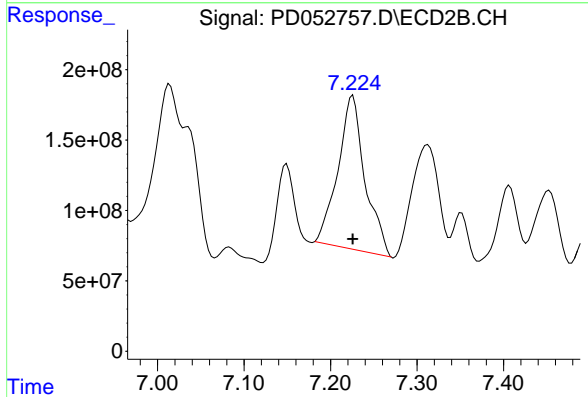
R.T.: 7.149 min
Delta R.T.: 0.000 min
Response: 865290119
Conc: 3742.50 ng/ml



#25 Toxaphene-4

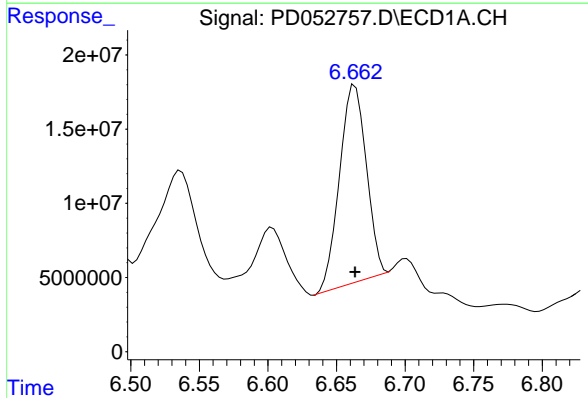
R.T.: 6.189 min
 Delta R.T.: -0.001 min
 Response: 151215186
 Conc: 4110.49 ng/ml

Instrument :
 ECD_D
 ClientSampleId :



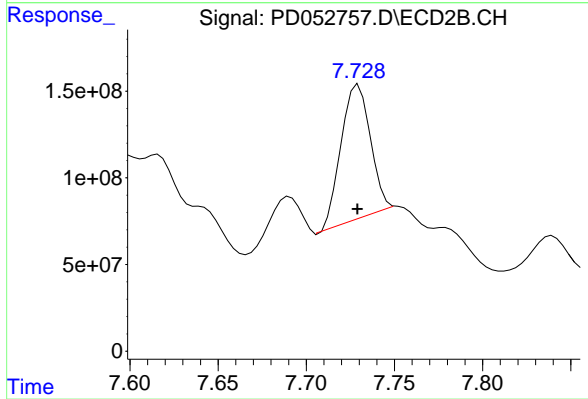
#25 Toxaphene-4

R.T.: 7.226 min
 Delta R.T.: 0.000 min
 Response: 2344611069
 Conc: 3824.84 ng/ml



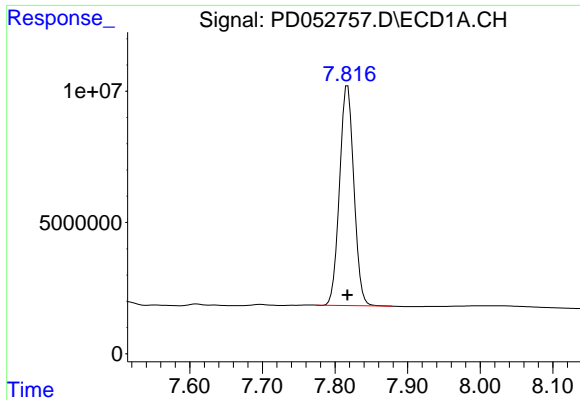
#26 Toxaphene-5

R.T.: 6.664 min
 Delta R.T.: 0.000 min
 Response: 180492087
 Conc: 4132.19 ng/ml



#26 Toxaphene-5

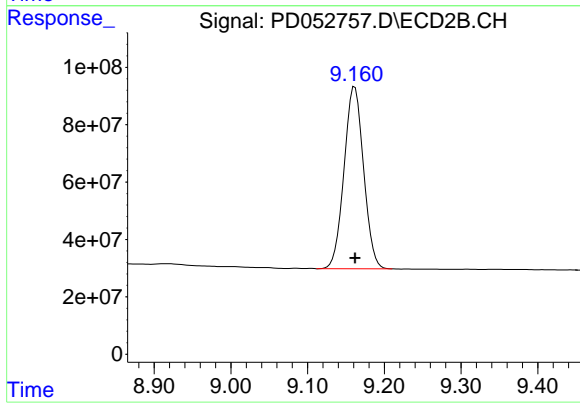
R.T.: 7.730 min
 Delta R.T.: 0.000 min
 Response: 912910545
 Conc: 3945.74 ng/ml



#27 Decachlorobiphenyl

R.T.: 7.817 min
Delta R.T.: 0.000 min
Response: 114931265
Conc: 78.06 ng/ml

Instrument :
ECD_D
ClientSampleId :



#27 Decachlorobiphenyl

R.T.: 9.161 min
Delta R.T.: 0.000 min
Response: 1127112151
Conc: 75.80 ng/ml