

Data Path : Z:\pestpcbsrv\HPCHEM1\ECD_D\Data\PD040821\
 Data File : PD062060.D
 Signal(s) : Signal #1: ECD1A.ch Signal #2: ECD2B.ch
 Acq On : 08 Apr 2021 12:36
 Operator : AR\AJ
 Sample : M1934-01MS
 Misc :
 ALS Vial : 11 Sample Multiplier: 1

Instrument :
 ECD_D
 ClientSampleId :
 TP-3MS

Integration File signal 1: autoint1.e
 Integration File signal 2: autoint2.e
 Quant Time: Apr 09 02:34:49 2021
 Quant Method : Z:\pestpcbsrv\HPCHEM1\ECD_D\Method\PD032921.M
 Quant Title : GC Extractables
 QLast Update : Tue Mar 30 04:47:56 2021
 Response via : Initial Calibration
 Integrator: ChemStation

Volume Inj. : 2 µl
 Signal #1 Phase : ZB-MR2 Signal #2 Phase: ZB-MR1
 Signal #1 Info : 30M x 0.32mm x0.2 Signal #2 Info : 30M x 0.32mm x 0.50µm

	Compound	RT#1	RT#2	Resp#1	Resp#2	ng/ml	ng/ml

System Monitoring Compounds							
1)	SA Tetrachlo...	3.484	3.980	19916859	215.3E6	23.787	24.782
28)	SA Decachlor...	8.255	9.039	28479401	185.9E6	23.146	19.689
Target Compounds							
2)	A alpha-BHC	3.924	4.369	79595016	836.3E6	63.020	62.173
3)	MA gamma-BHC...	4.208	4.653	74655428	763.6E6	62.880	61.217
4)	MA Heptachlor	4.512	5.161	78021282	761.6E6	67.019	58.446
5)	MB Aldrin	4.761	5.466	73764034	712.8E6	61.463	57.281
6)	B beta-BHC	4.459	4.822	34339306	322.5E6	62.971	62.446
7)	B delta-BHC	4.665	5.040	73576843	692.0E6	60.567	52.317
8)	B Heptachlo...	5.205	5.852	70137691	658.1E6	61.184	55.580
9)	A Endosulfan I	5.546	6.209	68071924	624.2E6	61.990	57.578
10)	B gamma-Chl...	5.433	6.086	78721252	684.9E6	67.205	57.776
11)	B alpha-Chl...	5.492	6.158	76071392	696.8E6	65.465	61.123
12)	B 4,4'-DDE	5.655	6.315	72067558	668.9E6	64.136	58.046
13)	MA Dieldrin	5.790	6.465	74761591	683.3E6	64.679	59.200
14)	MA Endrin	6.048	6.683	68329486	561.0E6	66.500	56.691
15)	B Endosulfa...	6.322	6.891	61964999	562.6E6	60.460	59.252
16)	A 4,4'-DDD	6.172	6.804	58671219	538.5E6	63.045	56.874
17)	MA 4,4'-DDT	6.414	7.103	60110614	530.2E6	66.736	55.514
18)	B Endrin al...	6.490	7.015	53202170	457.4E6	62.271	58.165
19)	B Endosulfa...	6.704	7.239	63765527	564.3E6	59.095	56.307
20)	A Methoxychlor	6.960	7.561	33795203	258.3E6	71.524	57.292
21)	B Endrin ke...	7.198	7.709	74430779	550.7E6	58.320	54.295
22)	Mirex	7.388	8.163	56247338	349.4E6	69.272	54.211

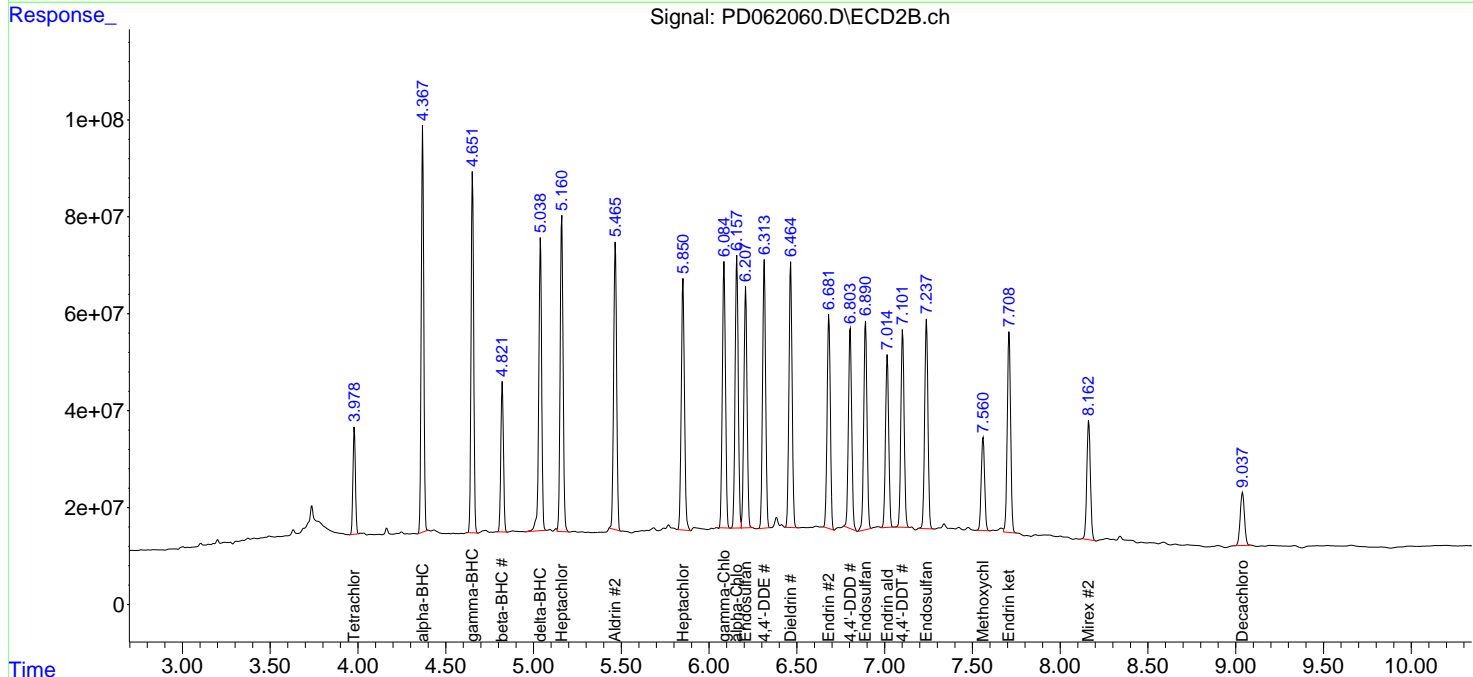
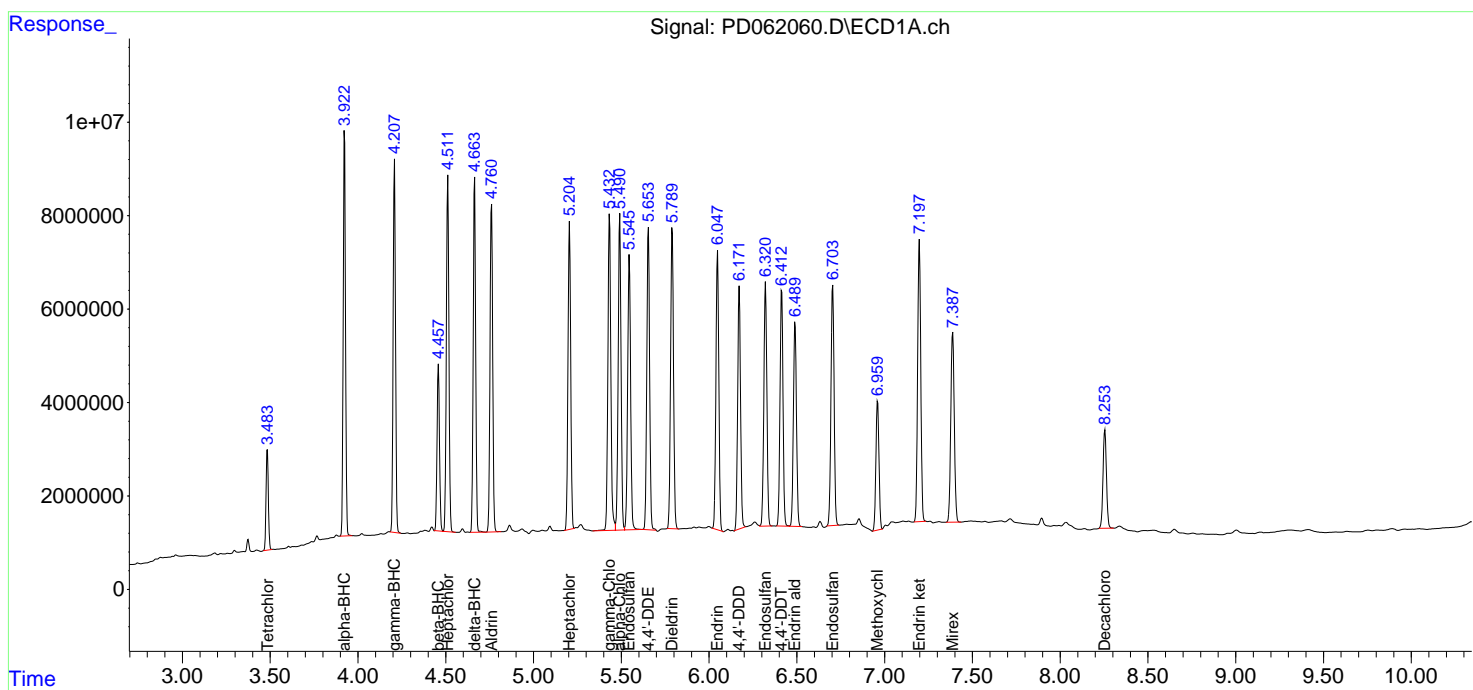
(f)=RT Delta > 1/2 Window (#)=Amounts differ by > 25% (m)=manual int.

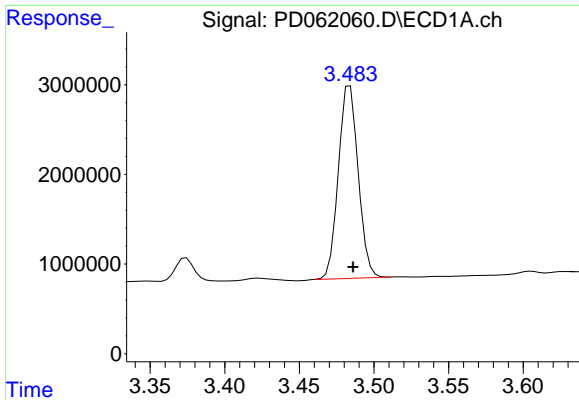
Data Path : Z:\pestpcbsrv\HPCHEM1\ECD_D\Data\PD040821\
 Data File : PD062060.D
 Signal(s) : Signal #1: ECD1A.ch Signal #2: ECD2B.ch
 Acq On : 08 Apr 2021 12:36
 Operator : AR\AJ
 Sample : M1934-01MS
 Misc :
 ALS Vial : 11 Sample Multiplier: 1

Instrument :
 ECD_D
 ClientSampled :
 TP-3MS

Integration File signal 1: autoint1.e
 Integration File signal 2: autoint2.e
 Quant Time: Apr 09 02:34:49 2021
 Quant Method : Z:\pestpcbsrv\HPCHEM1\ECD_D\Method\PD032921.M
 Quant Title : GC Extractables
 QLast Update : Tue Mar 30 04:47:56 2021
 Response via : Initial Calibration
 Integrator: ChemStation

Volume Inj. : 2 µl
 Signal #1 Phase : ZB-MR2 Signal #2 Phase: ZB-MR1
 Signal #1 Info : 30M x 0.32mm x0.2 Signal #2 Info : 30M x 0.32mm x 0.50µm

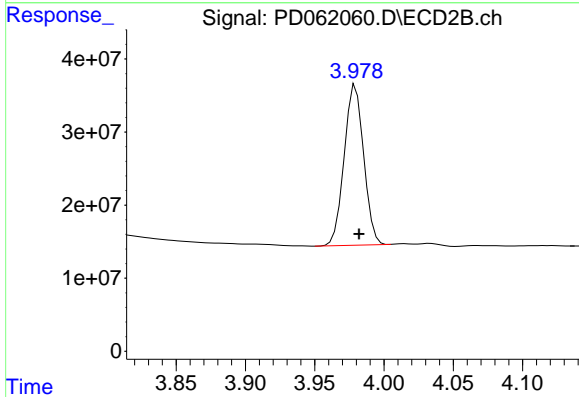




#1 Tetrachloro-m-xylene

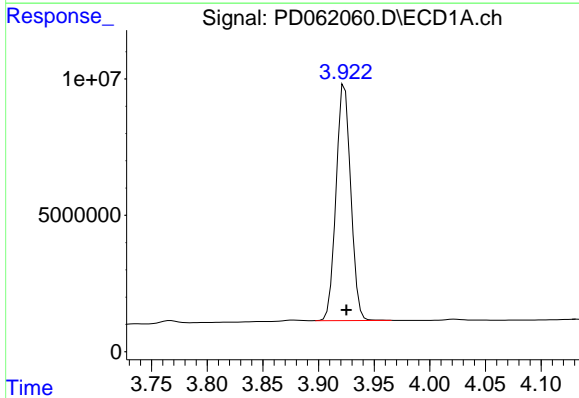
R.T.: 3.484 min
 Delta R.T.: -0.002 min
 Response: 19916859
 Conc: 23.79 ng/ml

Instrument :
 ECD_D
 ClientSampled :
 TP-3MS



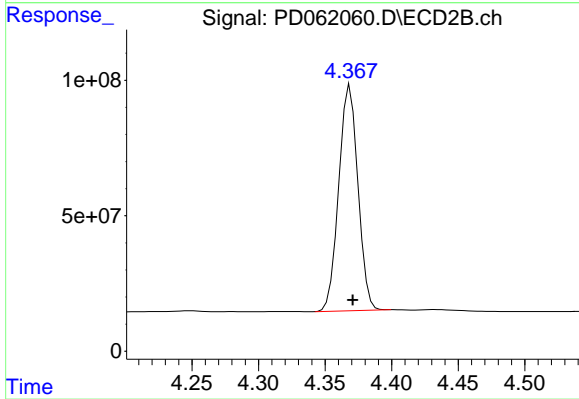
#1 Tetrachloro-m-xylene

R.T.: 3.980 min
 Delta R.T.: -0.002 min
 Response: 215332406
 Conc: 24.78 ng/ml



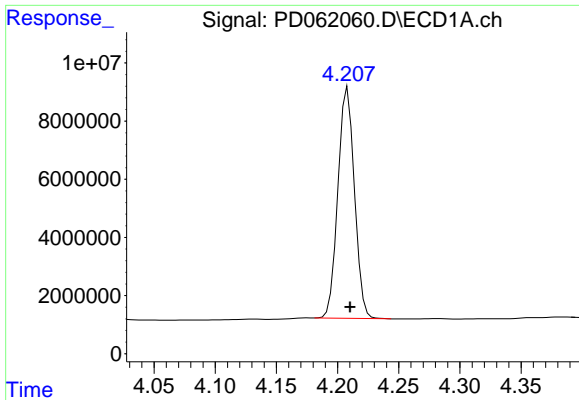
#2 alpha-BHC

R.T.: 3.924 min
 Delta R.T.: -0.001 min
 Response: 79595016
 Conc: 63.02 ng/ml



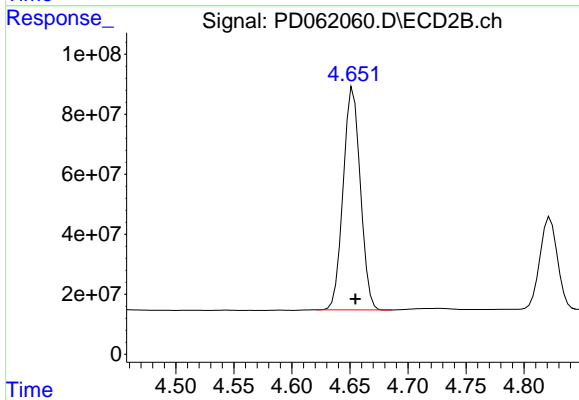
#2 alpha-BHC

R.T.: 4.369 min
 Delta R.T.: -0.002 min
 Response: 836276777
 Conc: 62.17 ng/ml

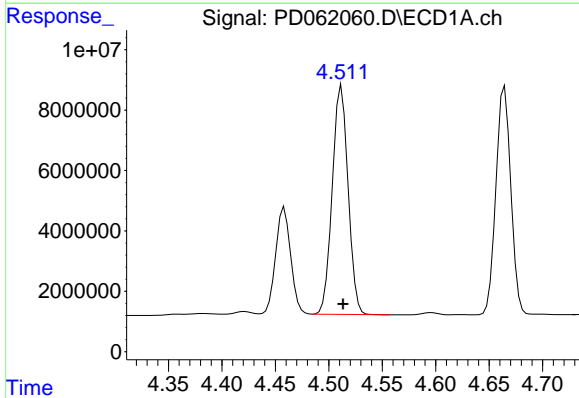


#3 gamma-BHC (Lindane)
 R.T.: 4.208 min
 Delta R.T.: -0.002 min
 Response: 74655428
 Conc: 62.88 ng/ml

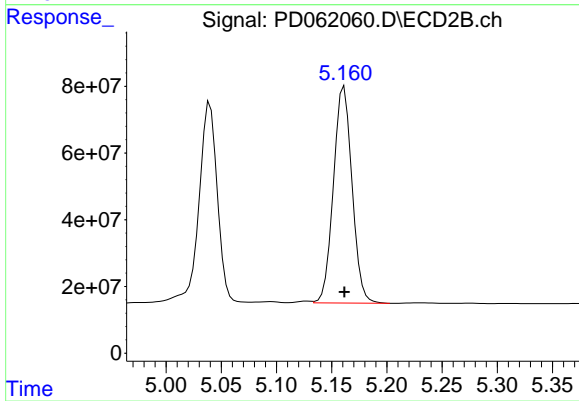
Instrument :
 ECD_D
 ClientSampleId :
 TP-3MS



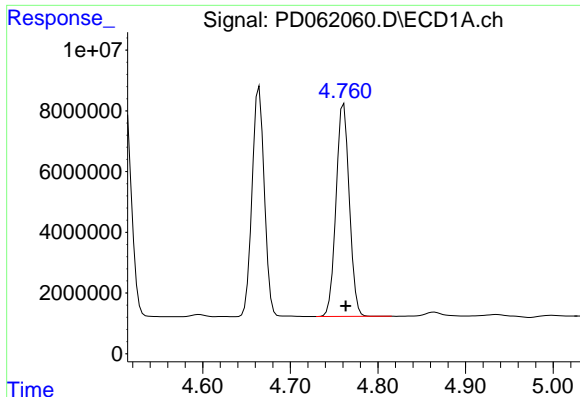
#3 gamma-BHC (Lindane)
 R.T.: 4.653 min
 Delta R.T.: -0.002 min
 Response: 763609374
 Conc: 61.22 ng/ml



#4 Heptachlor
 R.T.: 4.512 min
 Delta R.T.: -0.001 min
 Response: 78021282
 Conc: 67.02 ng/ml

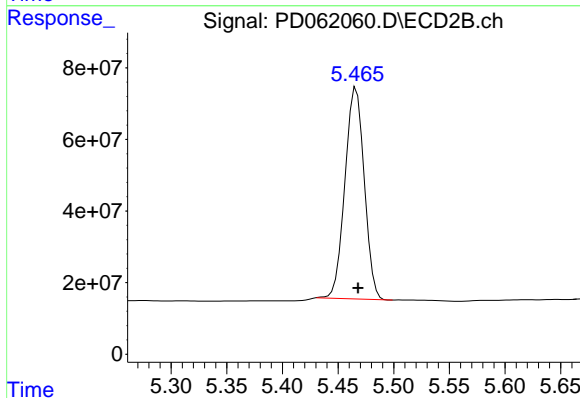


#4 Heptachlor
 R.T.: 5.161 min
 Delta R.T.: 0.000 min
 Response: 761641580
 Conc: 58.45 ng/ml

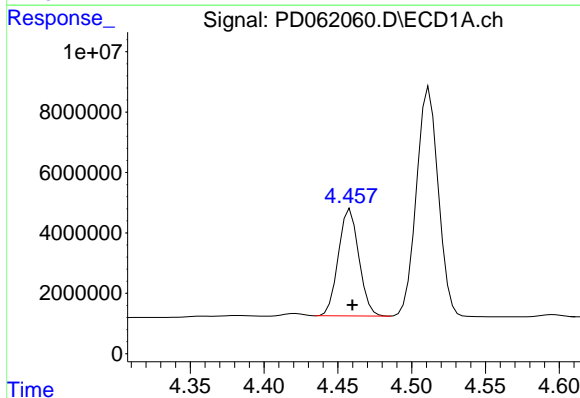


#5 Aldrin
 R.T.: 4.761 min
 Delta R.T.: -0.002 min
 Response: 73764034
 Conc: 61.46 ng/ml

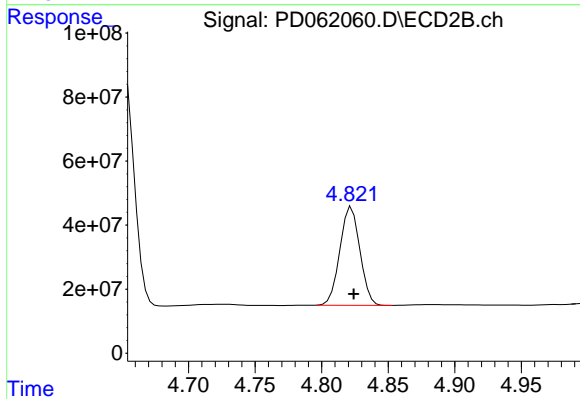
Instrument :
 ECD_D
 ClientSampleId :
 TP-3MS



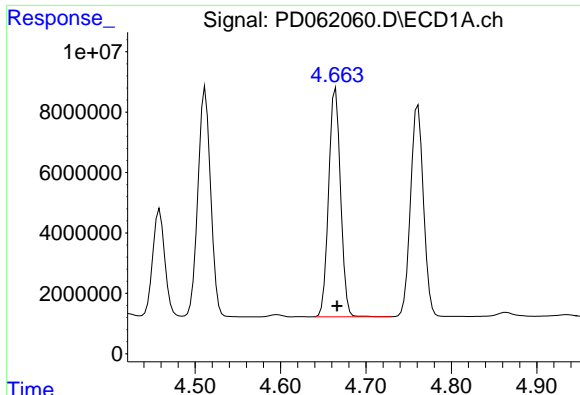
#5 Aldrin
 R.T.: 5.466 min
 Delta R.T.: -0.002 min
 Response: 712817044
 Conc: 57.28 ng/ml



#6 beta-BHC
 R.T.: 4.459 min
 Delta R.T.: -0.001 min
 Response: 34339306
 Conc: 62.97 ng/ml



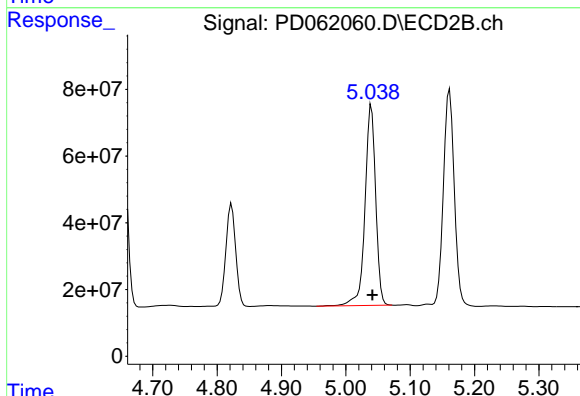
#6 beta-BHC
 R.T.: 4.822 min
 Delta R.T.: -0.002 min
 Response: 322542945
 Conc: 62.45 ng/ml



#7 delta-BHC

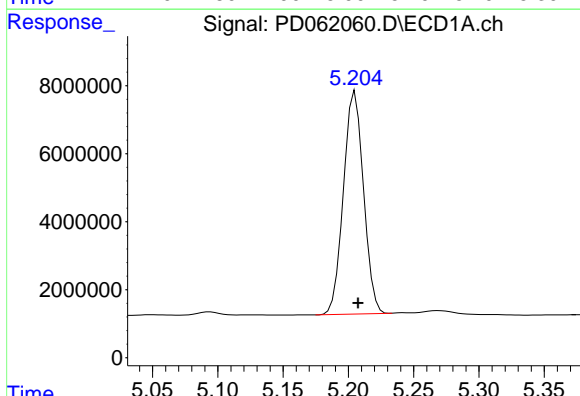
R.T.: 4.665 min
 Delta R.T.: -0.002 min
 Response: 73576843
 Conc: 60.57 ng/ml

Instrument :
 ECD_D
 ClientSampleId :
 TP-3MS



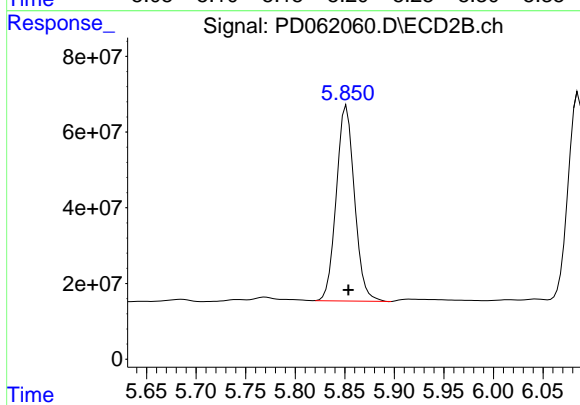
#7 delta-BHC

R.T.: 5.040 min
 Delta R.T.: -0.001 min
 Response: 691997441
 Conc: 52.32 ng/ml



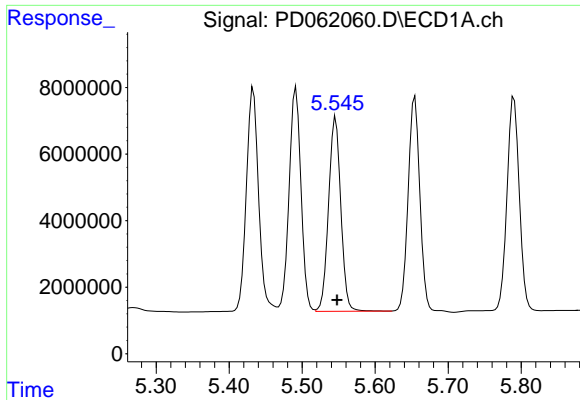
#8 Heptachlor epoxide

R.T.: 5.205 min
 Delta R.T.: -0.002 min
 Response: 70137691
 Conc: 61.18 ng/ml



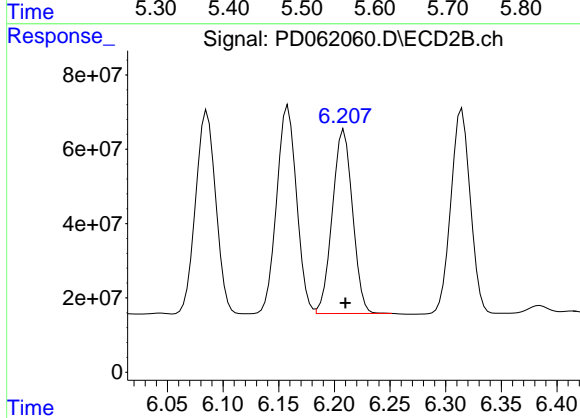
#8 Heptachlor epoxide

R.T.: 5.852 min
 Delta R.T.: -0.002 min
 Response: 658111634
 Conc: 55.58 ng/ml

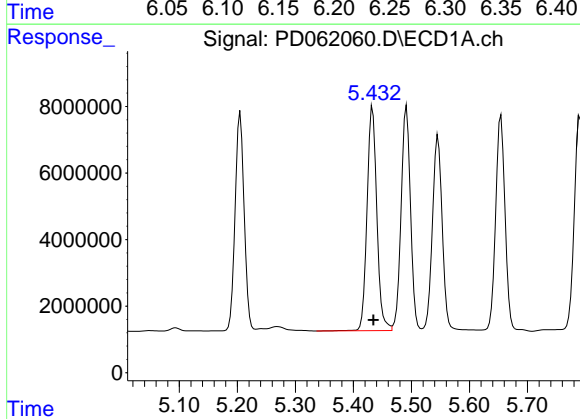


#9 Endosulfan I
 R.T.: 5.546 min
 Delta R.T.: -0.002 min
 Response: 68071924
 Conc: 61.99 ng/ml

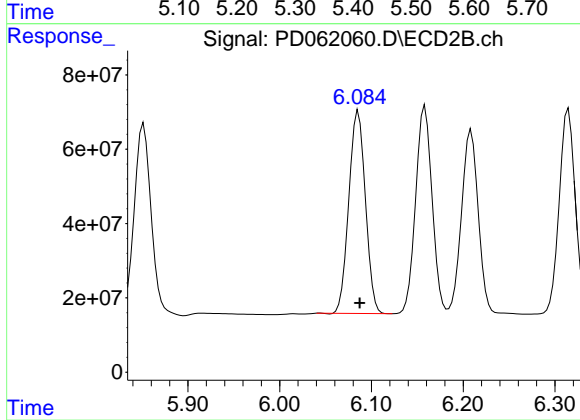
Instrument :
 ECD_D
 ClientSampled :
 TP-3MS



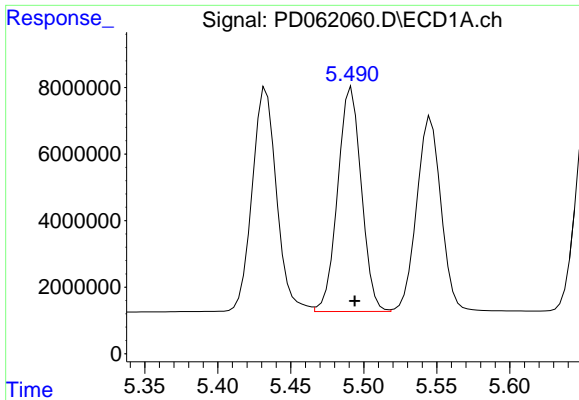
#9 Endosulfan I
 R.T.: 6.209 min
 Delta R.T.: -0.001 min
 Response: 624152263
 Conc: 57.58 ng/ml



#10 gamma-Chlordane
 R.T.: 5.433 min
 Delta R.T.: -0.002 min
 Response: 78721252
 Conc: 67.21 ng/ml

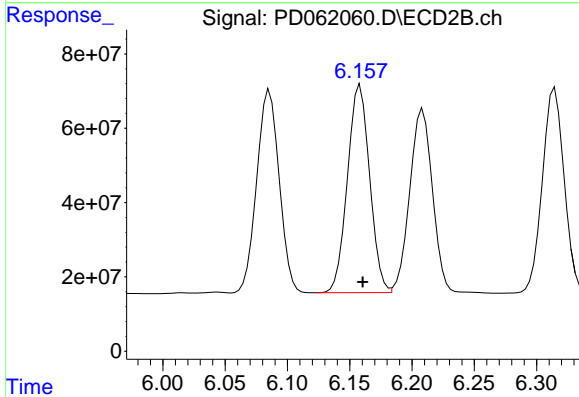


#10 gamma-Chlordane
 R.T.: 6.086 min
 Delta R.T.: -0.002 min
 Response: 684937649
 Conc: 57.78 ng/ml

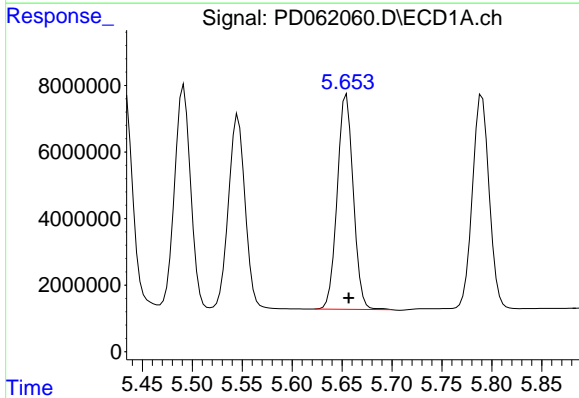


#11 alpha-Chlordane
 R.T.: 5.492 min
 Delta R.T.: -0.002 min
 Response: 76071392
 Conc: 65.46 ng/ml

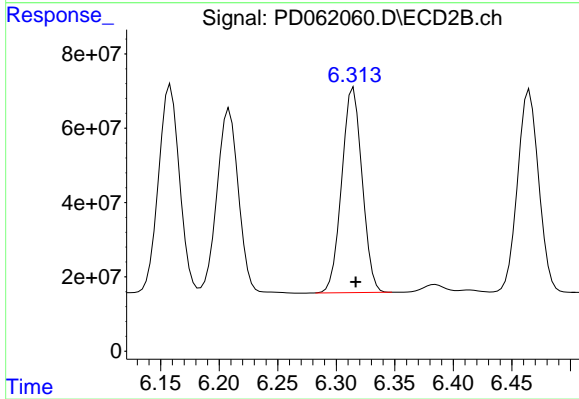
Instrument :
 ECD_D
 ClientSampleId :
 TP-3MS



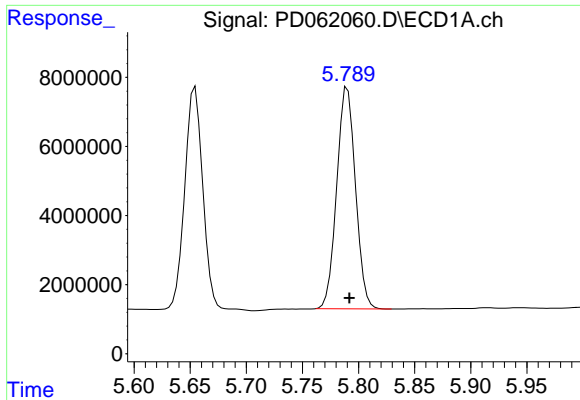
#11 alpha-Chlordane
 R.T.: 6.158 min
 Delta R.T.: -0.002 min
 Response: 696805790
 Conc: 61.12 ng/ml



#12 4,4'-DDE
 R.T.: 5.655 min
 Delta R.T.: -0.002 min
 Response: 72067558
 Conc: 64.14 ng/ml

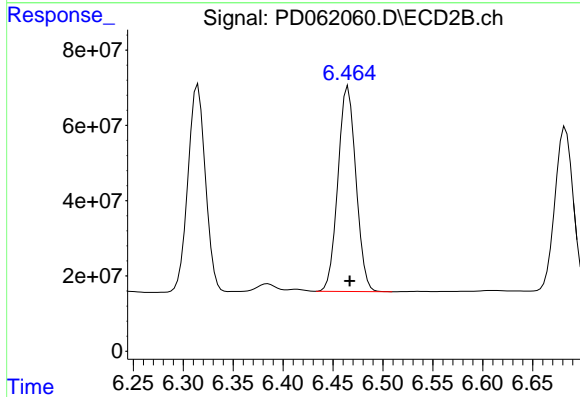


#12 4,4'-DDE
 R.T.: 6.315 min
 Delta R.T.: -0.002 min
 Response: 668931037
 Conc: 58.05 ng/ml

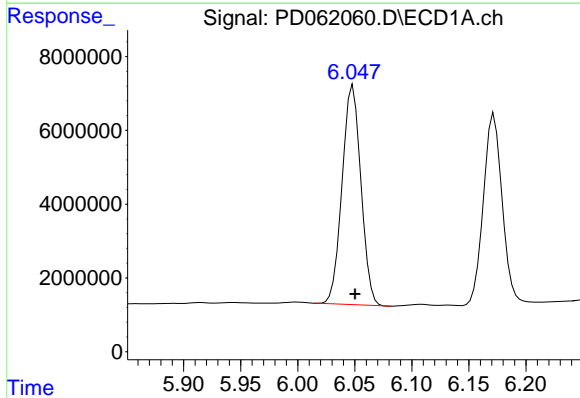


#13 Dieldrin
 R.T.: 5.790 min
 Delta R.T.: -0.002 min
 Response: 74761591
 Conc: 64.68 ng/ml

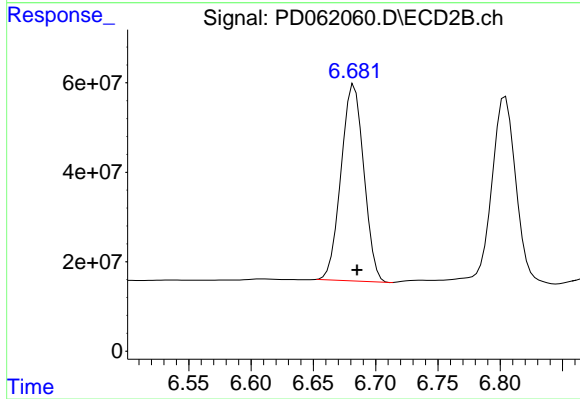
Instrument :
 ECD_D
 ClientSampled :
 TP-3MS



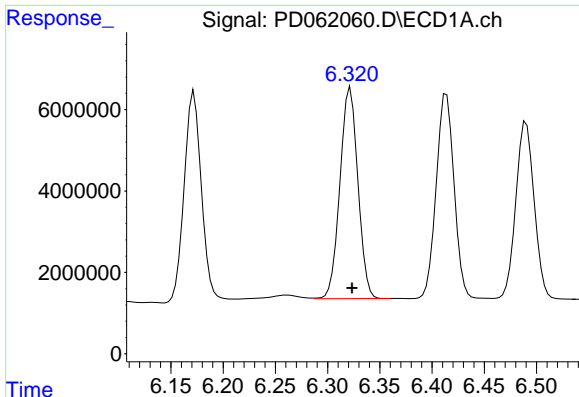
#13 Dieldrin
 R.T.: 6.465 min
 Delta R.T.: -0.002 min
 Response: 683322896
 Conc: 59.20 ng/ml



#14 Endrin
 R.T.: 6.048 min
 Delta R.T.: -0.002 min
 Response: 68329486
 Conc: 66.50 ng/ml



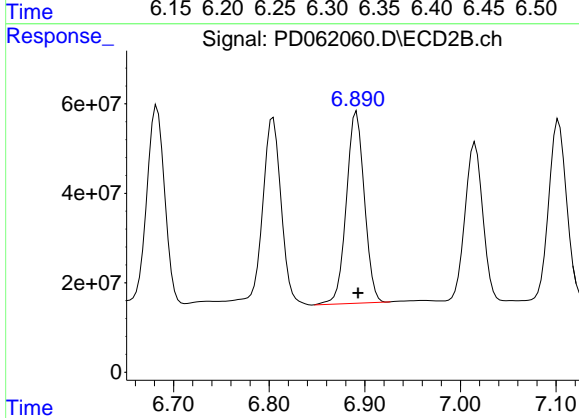
#14 Endrin
 R.T.: 6.683 min
 Delta R.T.: -0.002 min
 Response: 561029567
 Conc: 56.69 ng/ml



#15 Endosulfan II

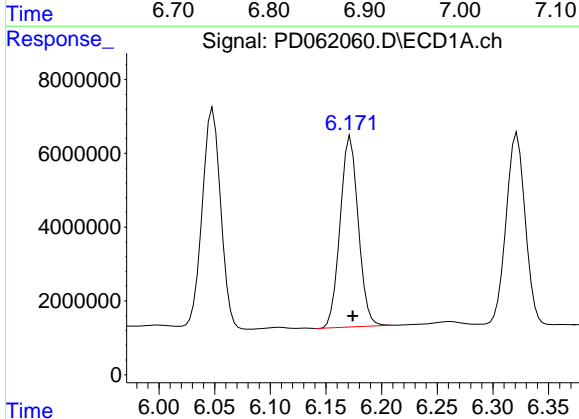
R.T.: 6.322 min
 Delta R.T.: -0.002 min
 Response: 61964999
 Conc: 60.46 ng/ml

Instrument :
 ECD_D
 ClientSampled :
 TP-3MS



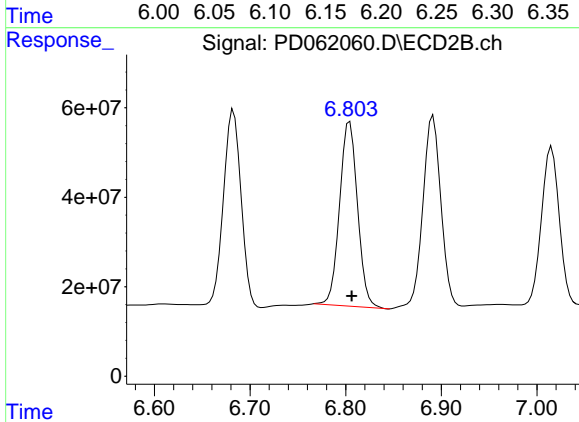
#15 Endosulfan II

R.T.: 6.891 min
 Delta R.T.: -0.002 min
 Response: 562571047
 Conc: 59.25 ng/ml



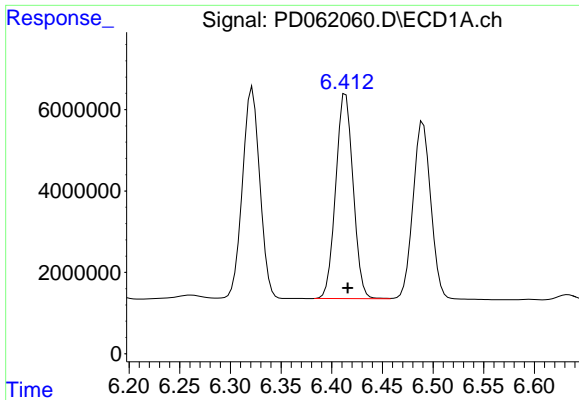
#16 4,4'-DDD

R.T.: 6.172 min
 Delta R.T.: -0.002 min
 Response: 58671219
 Conc: 63.04 ng/ml



#16 4,4'-DDD

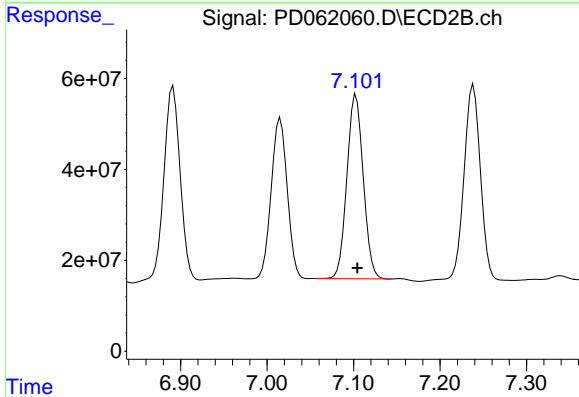
R.T.: 6.804 min
 Delta R.T.: -0.002 min
 Response: 538524624
 Conc: 56.87 ng/ml



#17 4,4'-DDT

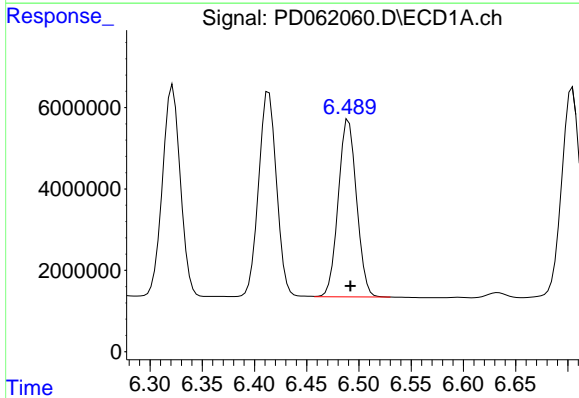
R.T.: 6.414 min
 Delta R.T.: -0.002 min
 Response: 60110614
 Conc: 66.74 ng/ml

Instrument :
 ECD_D
 ClientSampled :
 TP-3MS



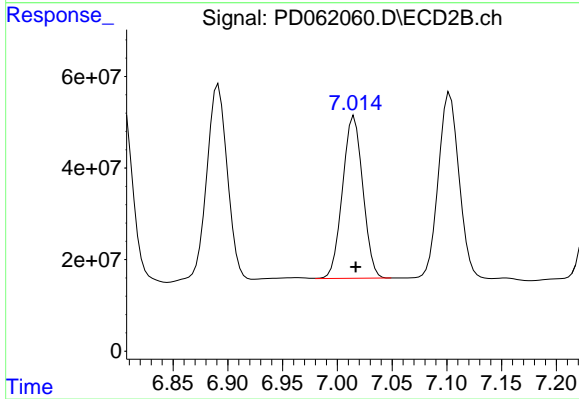
#17 4,4'-DDT

R.T.: 7.103 min
 Delta R.T.: -0.002 min
 Response: 530247693
 Conc: 55.51 ng/ml



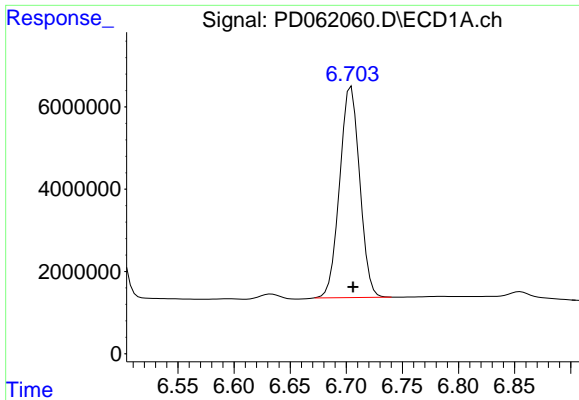
#18 Endrin aldehyde

R.T.: 6.490 min
 Delta R.T.: -0.002 min
 Response: 53202170
 Conc: 62.27 ng/ml



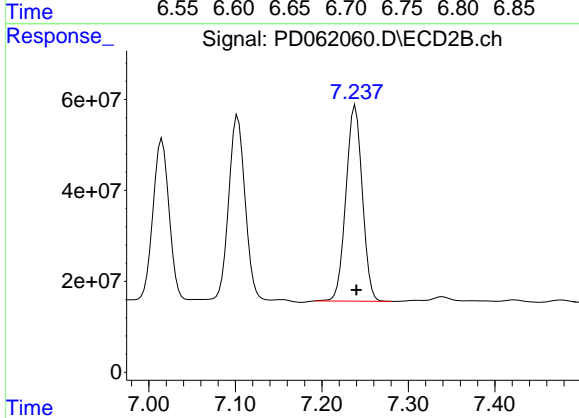
#18 Endrin aldehyde

R.T.: 7.015 min
 Delta R.T.: -0.001 min
 Response: 457426577
 Conc: 58.17 ng/ml

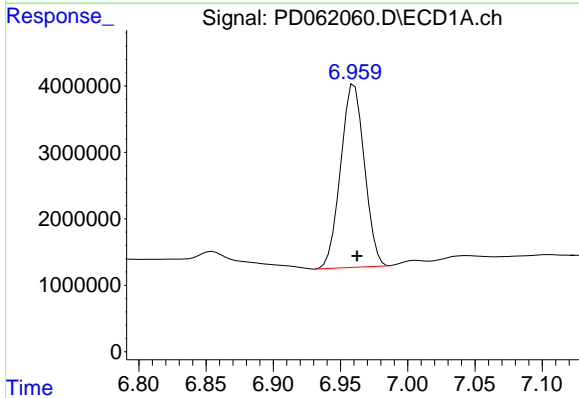


#19 Endosulfan Sulfate
 R.T.: 6.704 min
 Delta R.T.: -0.002 min
 Response: 63765527
 Conc: 59.09 ng/ml

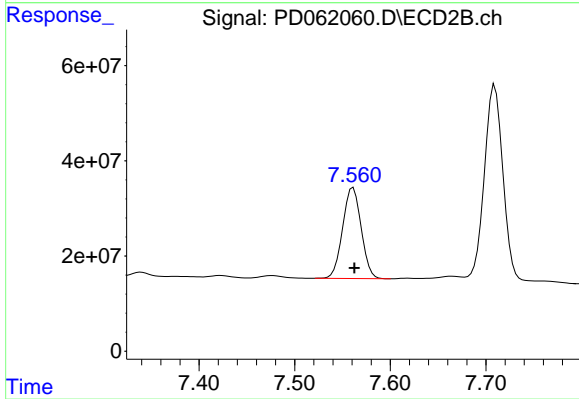
Instrument :
 ECD_D
 ClientSampleId :
 TP-3MS



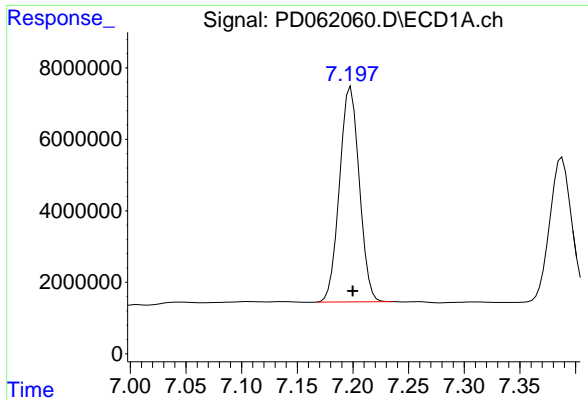
#19 Endosulfan Sulfate
 R.T.: 7.239 min
 Delta R.T.: -0.001 min
 Response: 564320948
 Conc: 56.31 ng/ml



#20 Methoxychlor
 R.T.: 6.960 min
 Delta R.T.: -0.002 min
 Response: 33795203
 Conc: 71.52 ng/ml

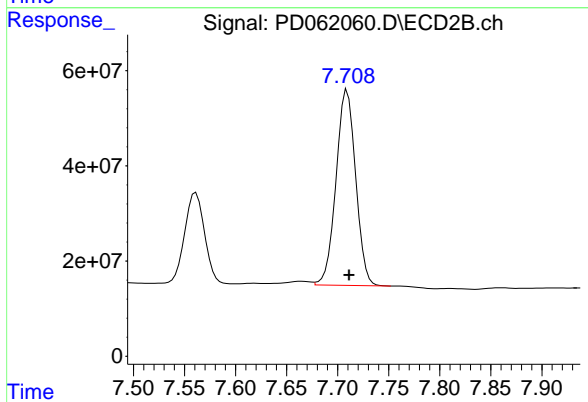


#20 Methoxychlor
 R.T.: 7.561 min
 Delta R.T.: -0.001 min
 Response: 258265374
 Conc: 57.29 ng/ml

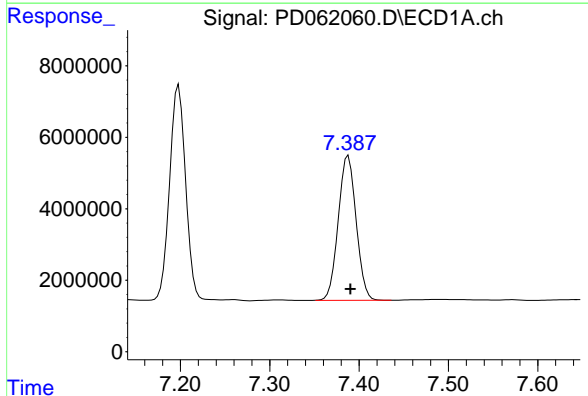


#21 Endrin ketone
R.T.: 7.198 min
Delta R.T.: -0.002 min
Response: 74430779
Conc: 58.32 ng/ml

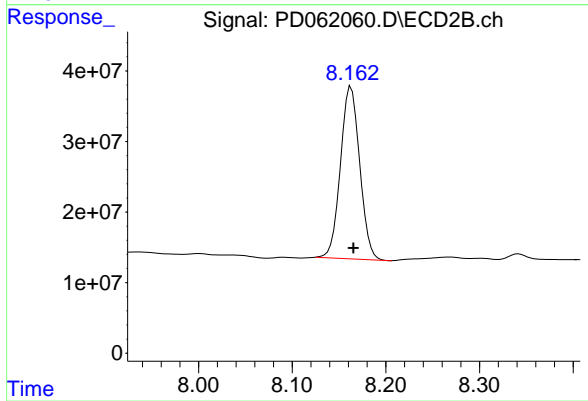
Instrument :
ECD_D
ClientSampled :
TP-3MS



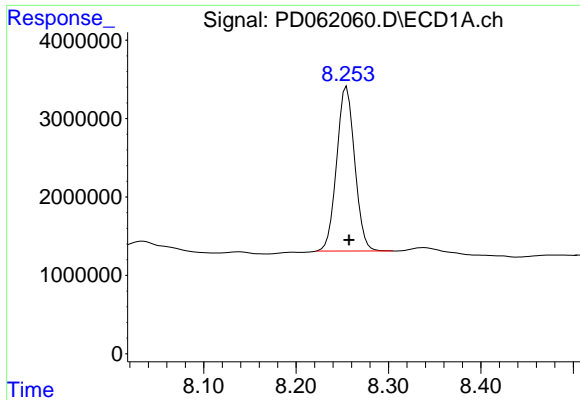
#21 Endrin ketone
R.T.: 7.709 min
Delta R.T.: -0.002 min
Response: 550696553
Conc: 54.30 ng/ml



#22 Mirex
R.T.: 7.388 min
Delta R.T.: -0.003 min
Response: 56247338
Conc: 69.27 ng/ml



#22 Mirex
R.T.: 8.163 min
Delta R.T.: -0.002 min
Response: 349362263
Conc: 54.21 ng/ml



#28 Decachlorobiphenyl

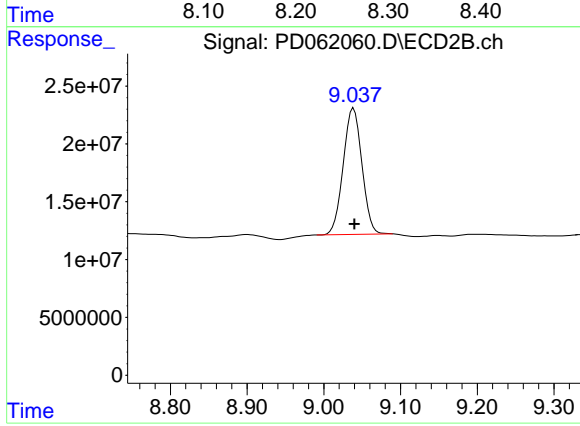
R.T.: 8.255 min

Delta R.T.: -0.003 min

Response: 28479401

Conc: 23.15 ng/ml

Instrument :
ECD_D
ClientSampleId :
TP-3MS



#28 Decachlorobiphenyl

R.T.: 9.039 min

Delta R.T.: -0.001 min

Response: 185877740

Conc: 19.69 ng/ml