

Data Path : Z:\pestpcbsrv\HPCHEM1\ECD\_D\Data\PD040821\  
 Data File : PD062065.D  
 Signal(s) : Signal #1: ECD1A.ch Signal #2: ECD2B.ch  
 Acq On : 08 Apr 2021 13:56  
 Operator : AR\AJ  
 Sample : PB135622BS  
 Misc :  
 ALS Vial : 14 Sample Multiplier: 1

Instrument :  
 ECD\_D  
 ClientSampleId :  
 PB135622BS

Integration File signal 1: autoint1.e  
 Integration File signal 2: autoint2.e  
 Quant Time: Apr 09 02:36:57 2021  
 Quant Method : Z:\pestpcbsrv\HPCHEM1\ECD\_D\Method\PD032921.M  
 Quant Title : GC Extractables  
 QLast Update : Tue Mar 30 04:47:56 2021  
 Response via : Initial Calibration  
 Integrator: ChemStation

Volume Inj. : 2 µl  
 Signal #1 Phase : ZB-MR2 Signal #2 Phase: ZB-MR1  
 Signal #1 Info : 30M x 0.32mm x0.2 Signal #2 Info : 30M x 0.32mm x 0.50µm

	Compound	RT#1	RT#2	Resp#1	Resp#2	ng/ml	ng/ml
-----							
System Monitoring Compounds							
1)	SA Tetrachlo...	3.484	3.980	16278372	179.9E6	19.442	20.708
28)	SA Decachlor...	8.256	9.039	26271402	180.0E6	21.351	19.069
Target Compounds							
2)	A alpha-BHC	3.924	4.369	64589268	704.6E6	51.139	52.386
3)	MA gamma-BHC...	4.209	4.653	60718931	647.3E6	51.142	51.891
4)	MA Heptachlor	4.512	5.161	62732446	644.7E6	53.886	49.475
5)	MB Aldrin	4.762	5.466	61512160	622.4E6	51.254	50.019
6)	B beta-BHC	4.459	4.822	28382710	278.5E6	52.048	53.912
7)	B delta-BHC	4.665	5.039	60270300	635.6E6	49.613	48.051
8)	B Heptachlo...	5.206	5.851	59372410	569.8E6	51.793	48.124
9)	A Endosulfan I	5.546	6.207	56878759	539.1E6	51.797	49.731
10)	B gamma-Chl...	5.434	6.085	61089521	590.3E6	52.153	49.797
11)	B alpha-Chl...	5.492	6.158	59868365	562.1E6	51.521	49.303
12)	B 4,4'-DDE	5.655	6.314	58218242	576.2E6	51.811	49.998
13)	MA Dieldrin	5.791	6.464	61304923	583.9E6	53.037	50.589
14)	MA Endrin	6.049	6.683	50243565	453.0E6	48.898	45.771
15)	B Endosulfa...	6.322	6.891	54618498	482.1E6	53.292	50.774
16)	A 4,4'-DDD	6.173	6.804	50474857	473.9E6	54.237	50.051
17)	MA 4,4'-DDT	6.414	7.103	48149508	426.8E6	53.456	44.686
18)	B Endrin al...	6.490	7.015	49137957	417.0E6	57.514	53.019
19)	B Endosulfa...	6.705	7.238	56579593	488.9E6	52.435	48.778
20)	A Methoxychlor	6.961	7.561	27653658	212.9E6	58.526	47.233
21)	B Endrin ke...	7.199	7.708	67125622	480.9E6	52.596	47.418
22)	Mirex	7.390	8.163	49733632	294.5E6	60.518	45.696

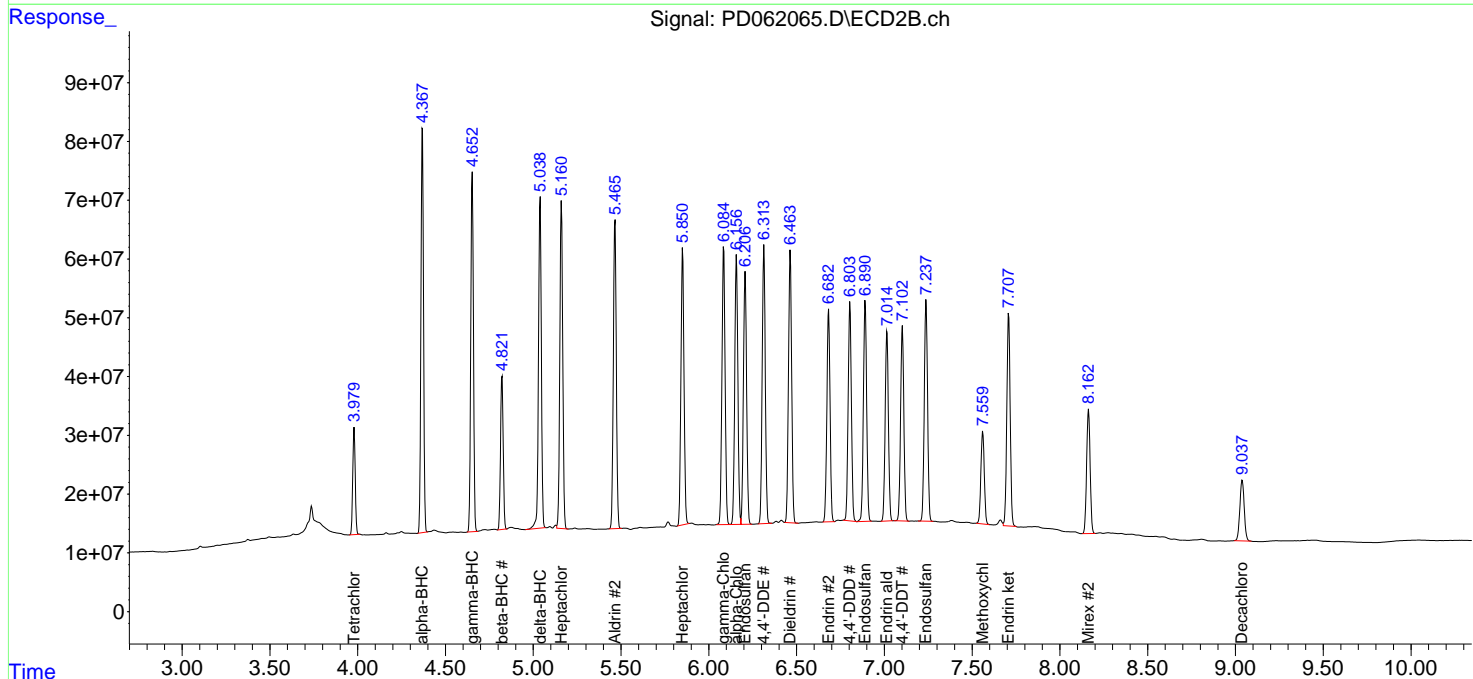
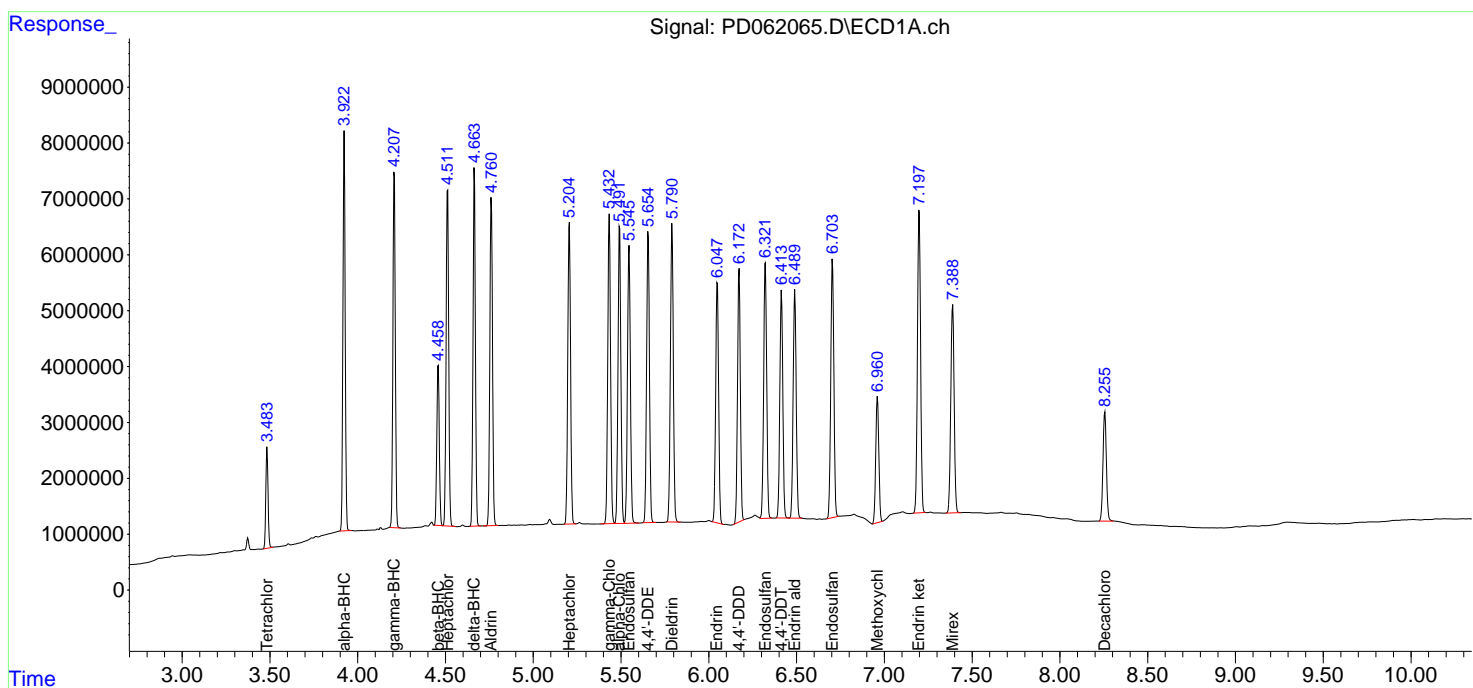
(f)=RT Delta > 1/2 Window (#)=Amounts differ by > 25% (m)=manual int.

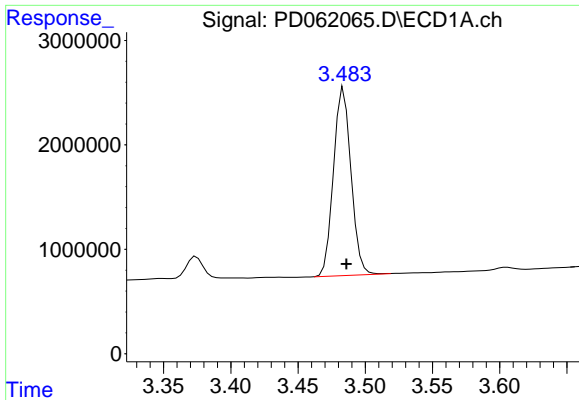
Data Path : Z:\pestpcbsrv\HPCHEM1\ECD\_D\Data\PD040821\  
 Data File : PD062065.D  
 Signal(s) : Signal #1: ECD1A.ch Signal #2: ECD2B.ch  
 Acq On : 08 Apr 2021 13:56  
 Operator : AR\AJ  
 Sample : PB135622BS  
 Misc :  
 ALS Vial : 14 Sample Multiplier: 1

Instrument :  
 ECD\_D  
 ClientSampled :  
 PB135622BS

Integration File signal 1: autoint1.e  
 Integration File signal 2: autoint2.e  
 Quant Time: Apr 09 02:36:57 2021  
 Quant Method : Z:\pestpcbsrv\HPCHEM1\ECD\_D\Method\PD032921.M  
 Quant Title : GC Extractables  
 QLast Update : Tue Mar 30 04:47:56 2021  
 Response via : Initial Calibration  
 Integrator: ChemStation

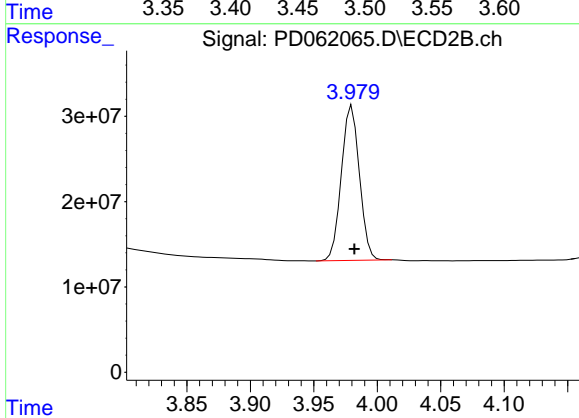
Volume Inj. : 2 µl  
 Signal #1 Phase : ZB-MR2 Signal #2 Phase: ZB-MR1  
 Signal #1 Info : 30M x 0.32mm x0.2 Signal #2 Info : 30M x 0.32mm x 0.50µm



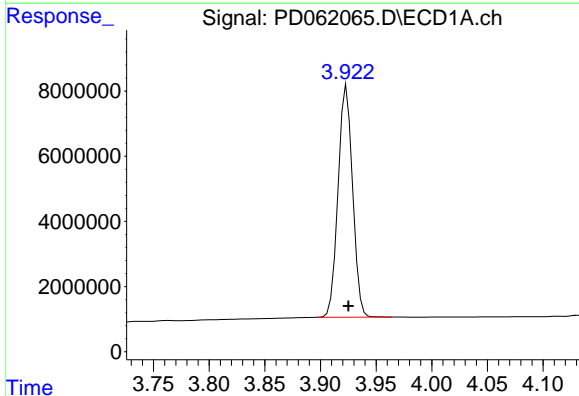


#1 Tetrachloro-m-xylene  
 R.T.: 3.484 min  
 Delta R.T.: -0.002 min  
 Response: 16278372  
 Conc: 19.44 ng/ml

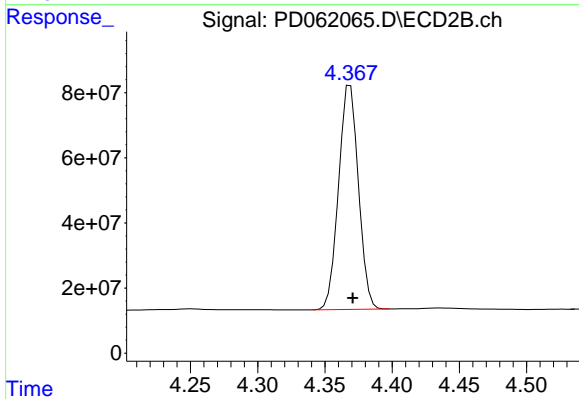
Instrument :  
 ECD\_D  
 ClientSampleId :  
 PB135622BS



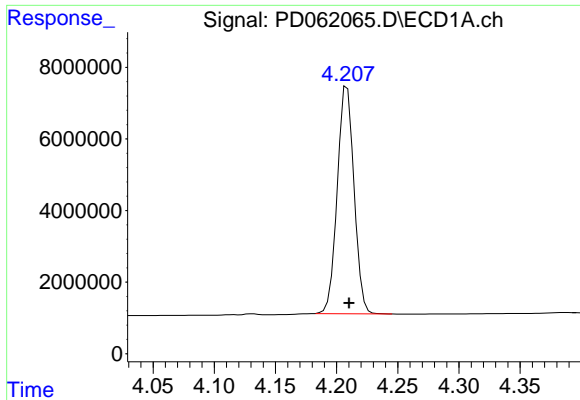
#1 Tetrachloro-m-xylene  
 R.T.: 3.980 min  
 Delta R.T.: -0.002 min  
 Response: 179931711  
 Conc: 20.71 ng/ml



#2 alpha-BHC  
 R.T.: 3.924 min  
 Delta R.T.: -0.001 min  
 Response: 64589268  
 Conc: 51.14 ng/ml

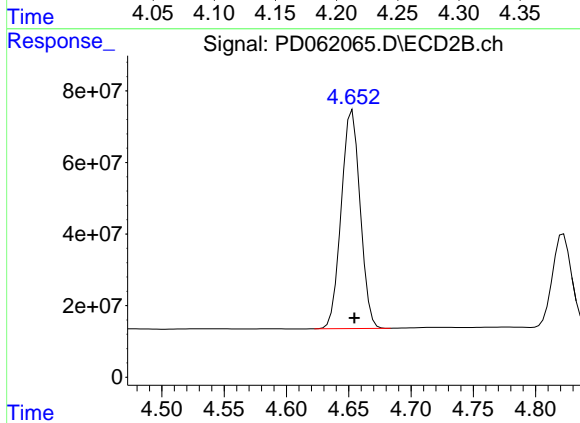


#2 alpha-BHC  
 R.T.: 4.369 min  
 Delta R.T.: -0.002 min  
 Response: 704635553  
 Conc: 52.39 ng/ml

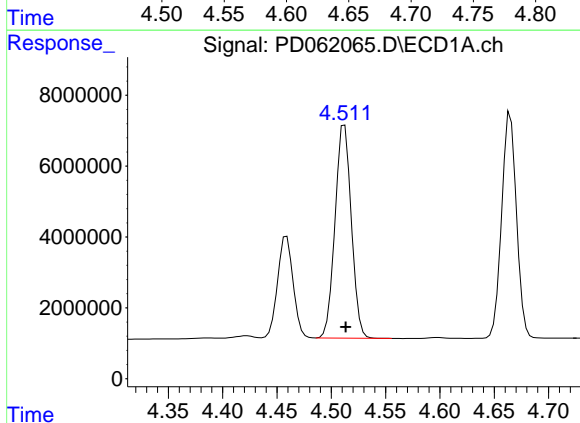


#3 gamma-BHC (Lindane)  
R.T.: 4.209 min  
Delta R.T.: -0.001 min  
Response: 60718931  
Conc: 51.14 ng/ml

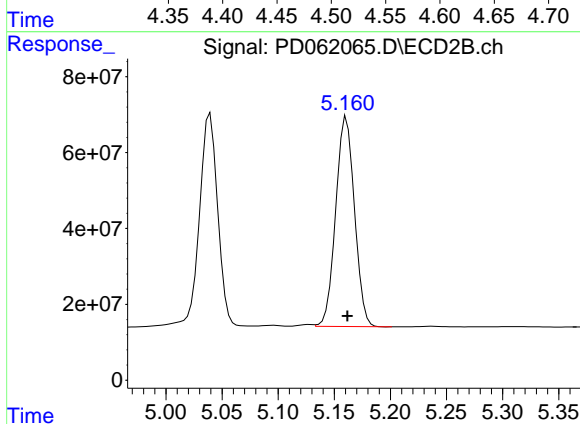
Instrument :  
ECD\_D  
ClientSampled :  
PB135622BS



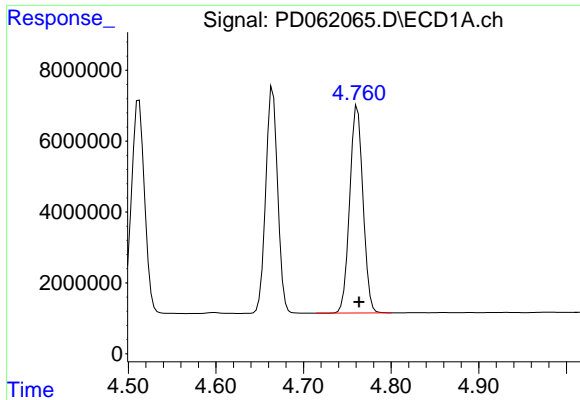
#3 gamma-BHC (Lindane)  
R.T.: 4.653 min  
Delta R.T.: -0.002 min  
Response: 647279913  
Conc: 51.89 ng/ml



#4 Heptachlor  
R.T.: 4.512 min  
Delta R.T.: 0.000 min  
Response: 62732446  
Conc: 53.89 ng/ml

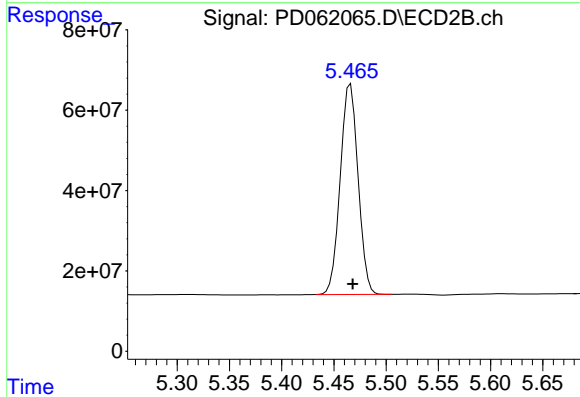


#4 Heptachlor  
R.T.: 5.161 min  
Delta R.T.: 0.000 min  
Response: 644735864  
Conc: 49.48 ng/ml

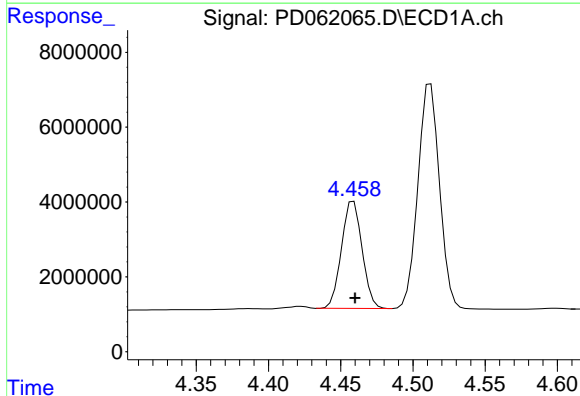


#5 Aldrin  
 R.T.: 4.762 min  
 Delta R.T.: -0.002 min  
 Response: 61512160  
 Conc: 51.25 ng/ml

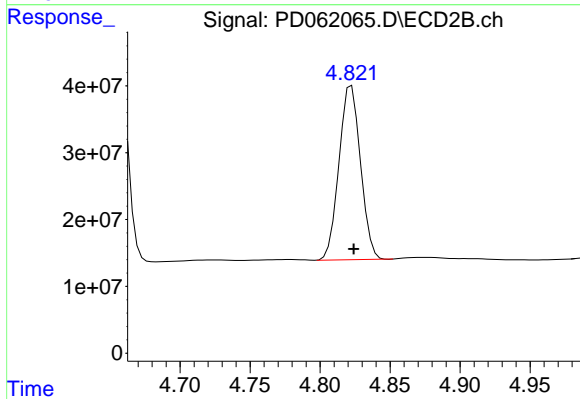
Instrument :  
 ECD\_D  
 ClientSampleId :  
 PB135622BS



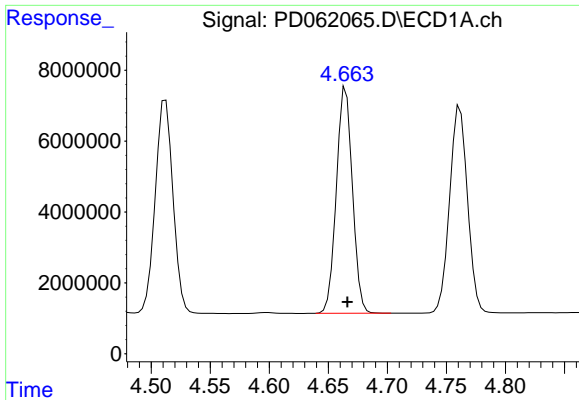
#5 Aldrin  
 R.T.: 5.466 min  
 Delta R.T.: -0.002 min  
 Response: 622441614  
 Conc: 50.02 ng/ml



#6 beta-BHC  
 R.T.: 4.459 min  
 Delta R.T.: 0.000 min  
 Response: 28382710  
 Conc: 52.05 ng/ml



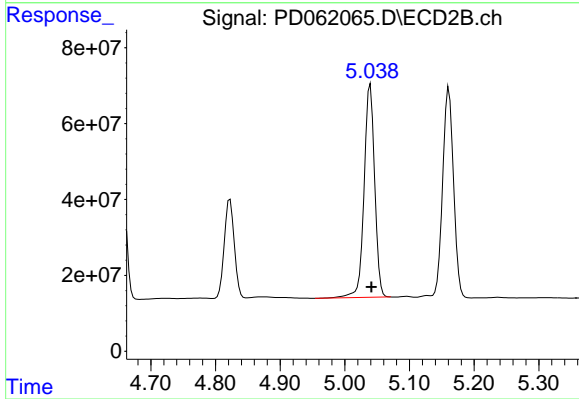
#6 beta-BHC  
 R.T.: 4.822 min  
 Delta R.T.: -0.002 min  
 Response: 278465369  
 Conc: 53.91 ng/ml



#7 delta-BHC

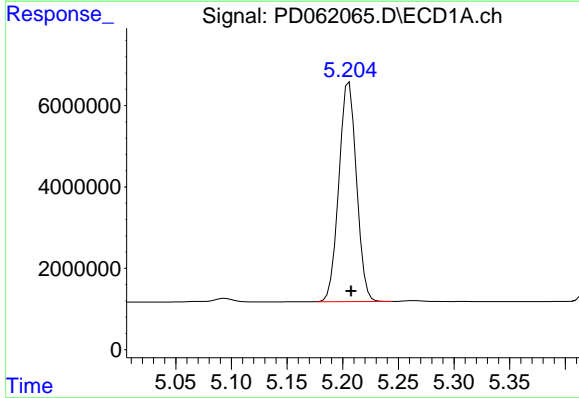
R.T.: 4.665 min  
 Delta R.T.: -0.001 min  
 Response: 60270300  
 Conc: 49.61 ng/ml

Instrument :  
 ECD\_D  
 ClientSampleId :  
 PB135622BS



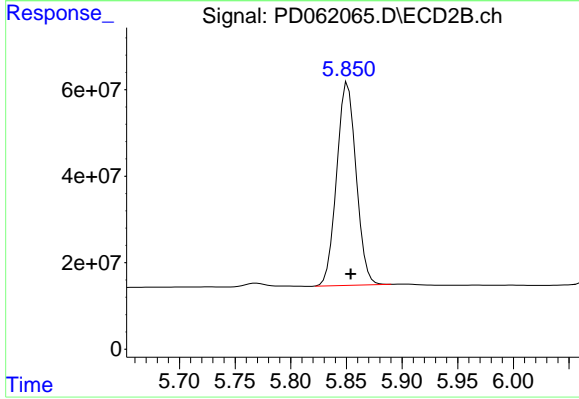
#7 delta-BHC

R.T.: 5.039 min  
 Delta R.T.: -0.002 min  
 Response: 63572693  
 Conc: 48.05 ng/ml



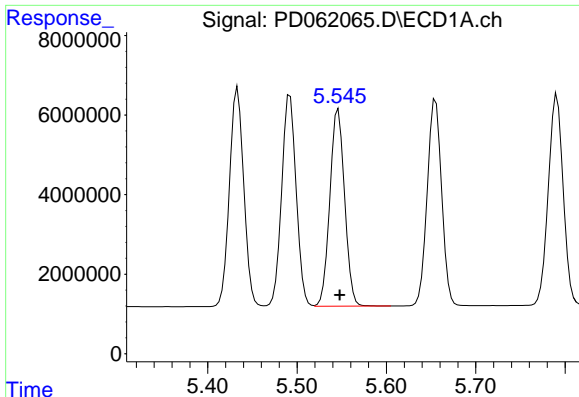
#8 Heptachlor epoxide

R.T.: 5.206 min  
 Delta R.T.: -0.002 min  
 Response: 59372410  
 Conc: 51.79 ng/ml



#8 Heptachlor epoxide

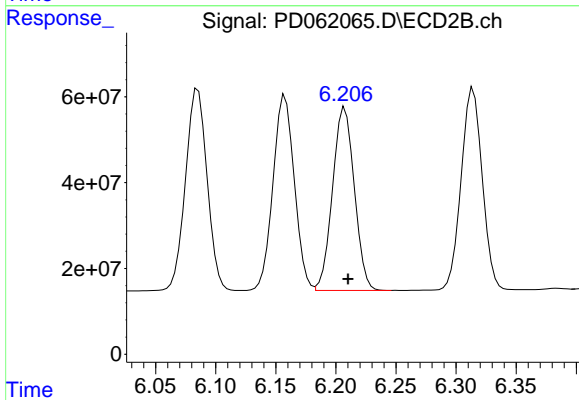
R.T.: 5.851 min  
 Delta R.T.: -0.003 min  
 Response: 569826854  
 Conc: 48.12 ng/ml



#9 Endosulfan I

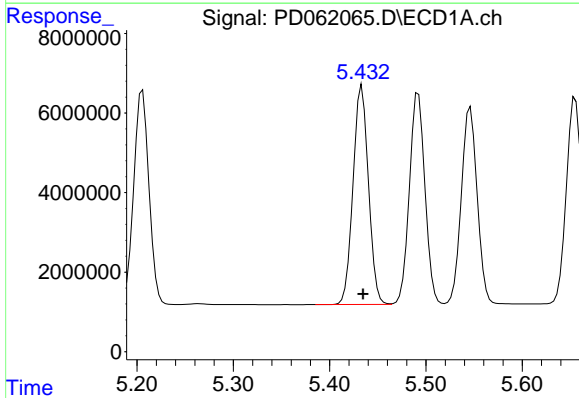
R.T.: 5.546 min  
 Delta R.T.: -0.002 min  
 Response: 56878759  
 Conc: 51.80 ng/ml

Instrument :  
 ECD\_D  
 ClientSampled :  
 PB135622BS



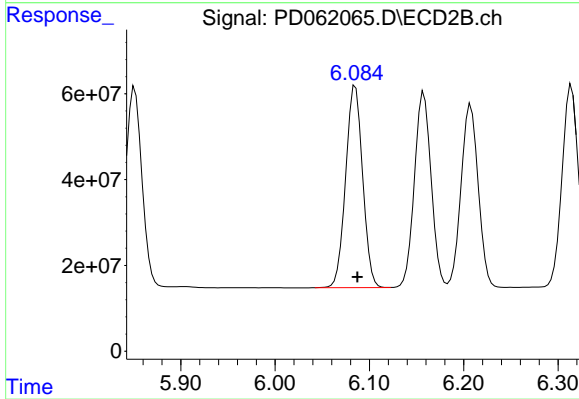
#9 Endosulfan I

R.T.: 6.207 min  
 Delta R.T.: -0.003 min  
 Response: 539093896  
 Conc: 49.73 ng/ml



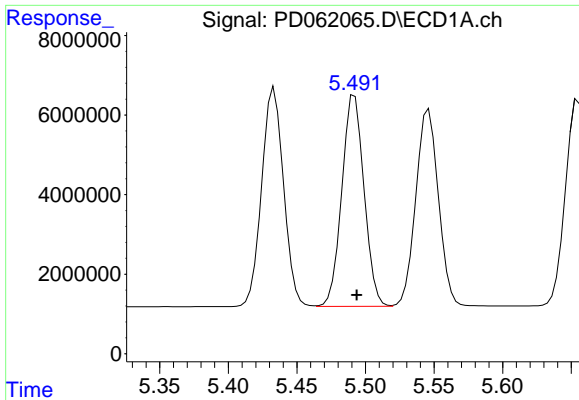
#10 gamma-Chlordane

R.T.: 5.434 min  
 Delta R.T.: -0.001 min  
 Response: 61089521  
 Conc: 52.15 ng/ml



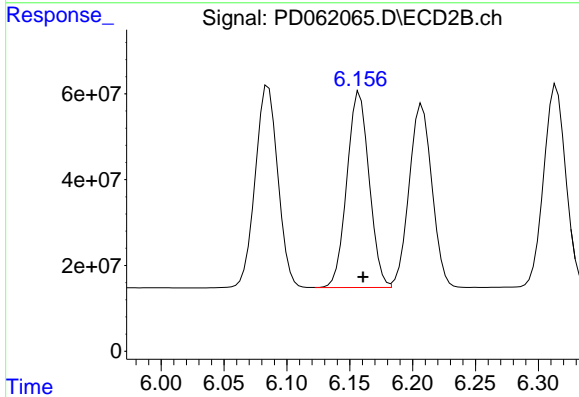
#10 gamma-Chlordane

R.T.: 6.085 min  
 Delta R.T.: -0.002 min  
 Response: 590341038  
 Conc: 49.80 ng/ml

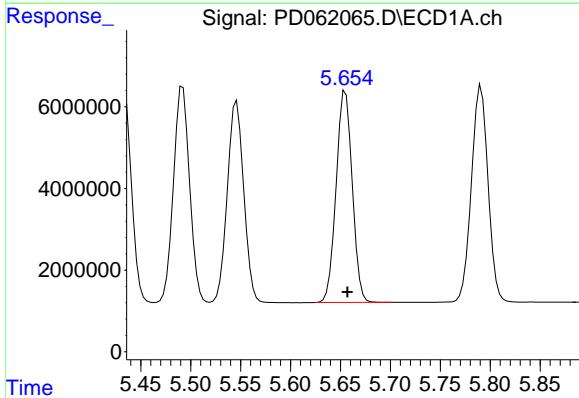


#11 alpha-Chlordane  
R.T.: 5.492 min  
Delta R.T.: -0.002 min  
Response: 59868365  
Conc: 51.52 ng/ml

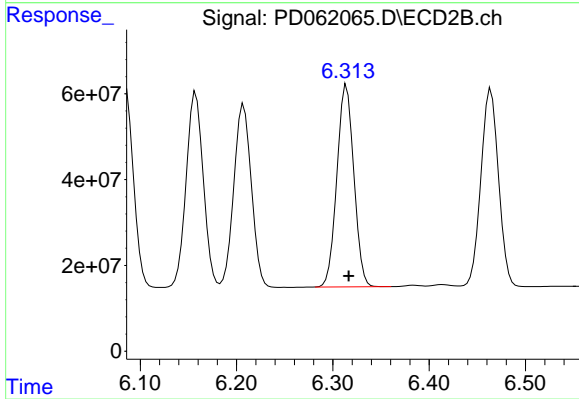
Instrument :  
ECD\_D  
ClientSampleId :  
PB135622BS



#11 alpha-Chlordane  
R.T.: 6.158 min  
Delta R.T.: -0.003 min  
Response: 562051619  
Conc: 49.30 ng/ml

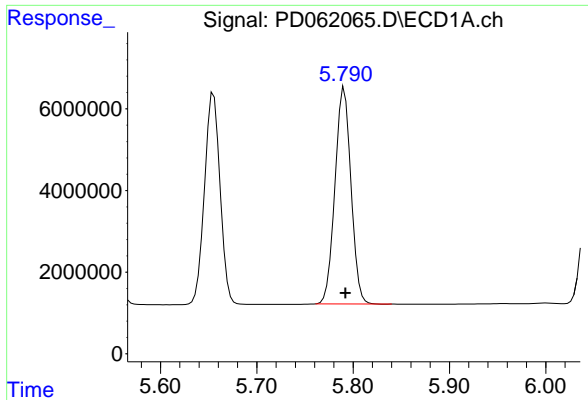


#12 4,4'-DDE  
R.T.: 5.655 min  
Delta R.T.: -0.002 min  
Response: 58218242  
Conc: 51.81 ng/ml



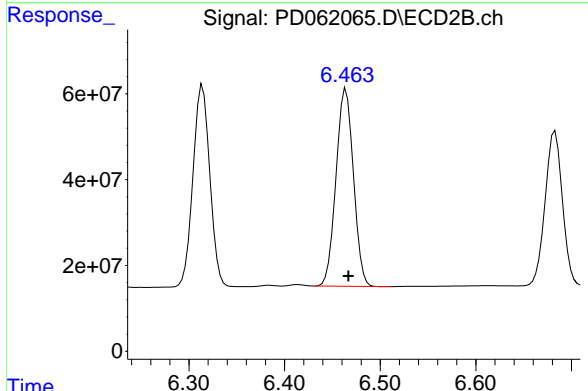
#12 4,4'-DDE  
R.T.: 6.314 min  
Delta R.T.: -0.002 min  
Response: 576183238  
Conc: 50.00 ng/ml



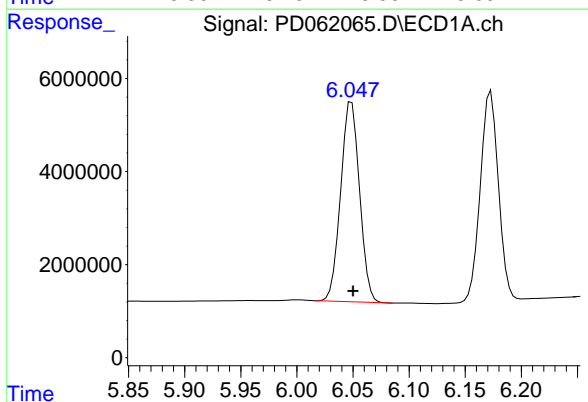


#13 Dieldrin  
 R.T.: 5.791 min  
 Delta R.T.: -0.001 min  
 Response: 61304923  
 Conc: 53.04 ng/ml

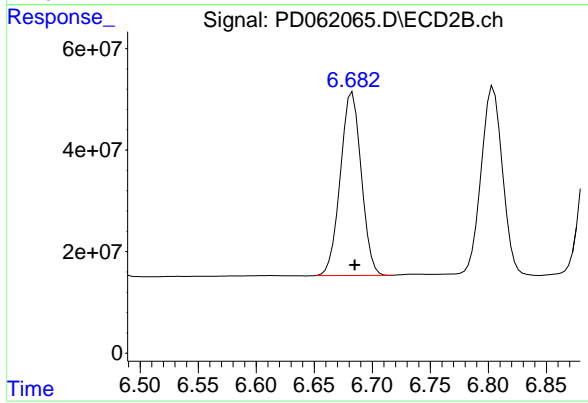
Instrument :  
 ECD\_D  
 ClientSampled :  
 PB135622BS



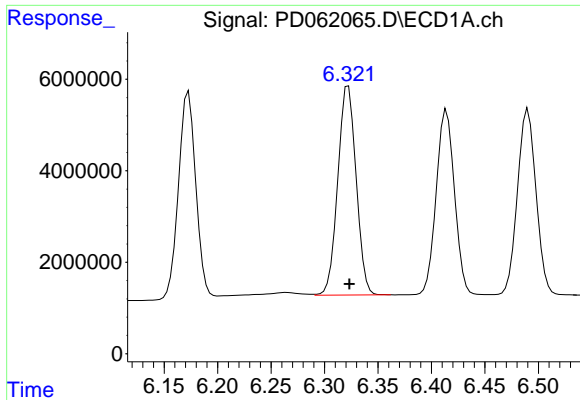
#13 Dieldrin  
 R.T.: 6.464 min  
 Delta R.T.: -0.002 min  
 Response: 583936313  
 Conc: 50.59 ng/ml



#14 Endrin  
 R.T.: 6.049 min  
 Delta R.T.: -0.002 min  
 Response: 50243565  
 Conc: 48.90 ng/ml



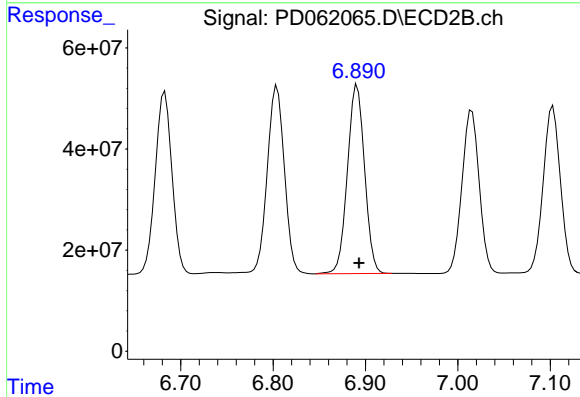
#14 Endrin  
 R.T.: 6.683 min  
 Delta R.T.: -0.002 min  
 Response: 452965118  
 Conc: 45.77 ng/ml



#15 Endosulfan II

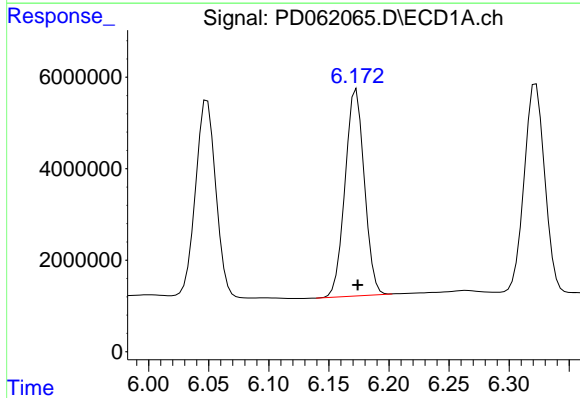
R.T.: 6.322 min  
 Delta R.T.: -0.001 min  
 Response: 54618498  
 Conc: 53.29 ng/ml

Instrument :  
 ECD\_D  
 ClientSampleId :  
 PB135622BS



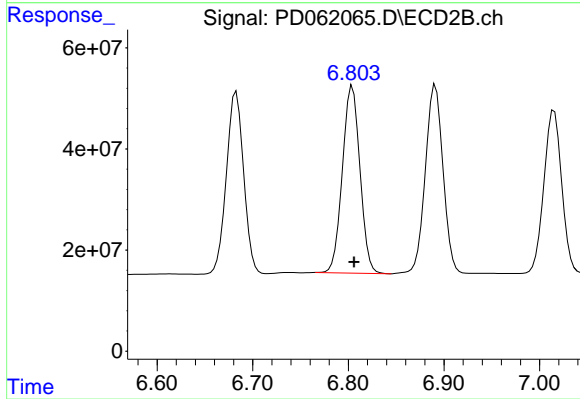
#15 Endosulfan II

R.T.: 6.891 min  
 Delta R.T.: -0.002 min  
 Response: 482075224  
 Conc: 50.77 ng/ml



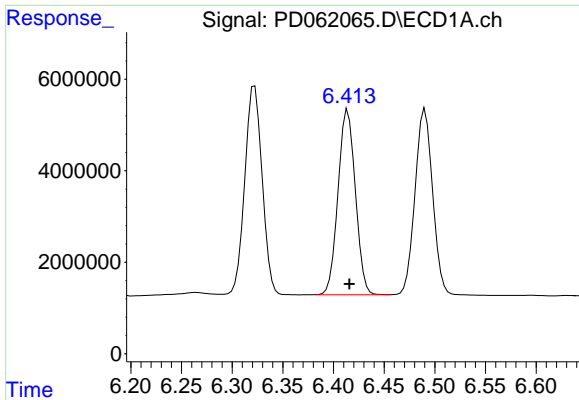
#16 4,4'-DDD

R.T.: 6.173 min  
 Delta R.T.: -0.001 min  
 Response: 50474857  
 Conc: 54.24 ng/ml



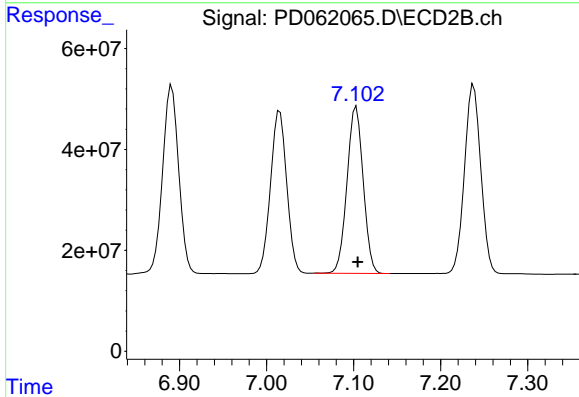
#16 4,4'-DDD

R.T.: 6.804 min  
 Delta R.T.: -0.002 min  
 Response: 473917996  
 Conc: 50.05 ng/ml

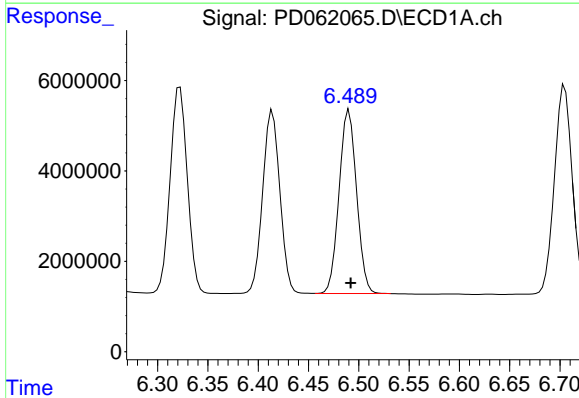


#17 4,4'-DDT  
R.T.: 6.414 min  
Delta R.T.: -0.001 min  
Response: 48149508  
Conc: 53.46 ng/ml

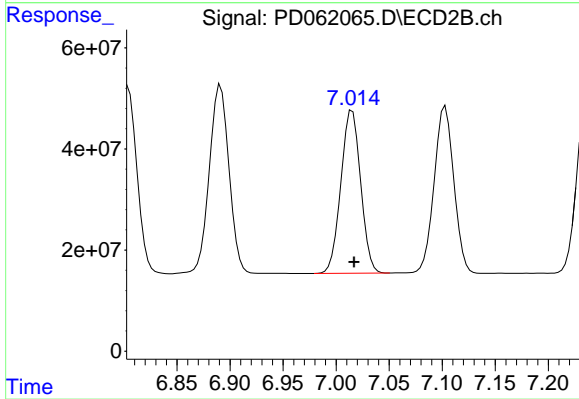
Instrument :  
ECD\_D  
ClientSampleId :  
PB135622BS



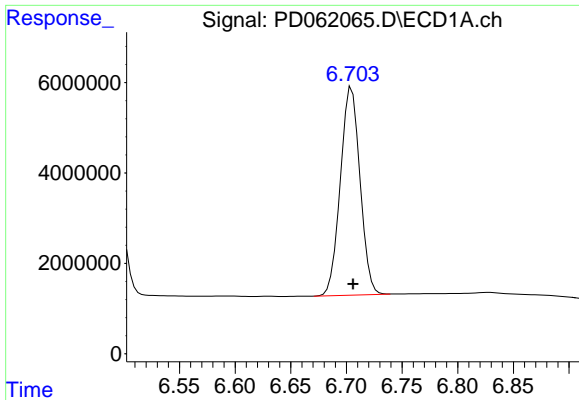
#17 4,4'-DDT  
R.T.: 7.103 min  
Delta R.T.: -0.002 min  
Response: 426828742  
Conc: 44.69 ng/ml



#18 Endrin aldehyde  
R.T.: 6.490 min  
Delta R.T.: -0.002 min  
Response: 49137957  
Conc: 57.51 ng/ml

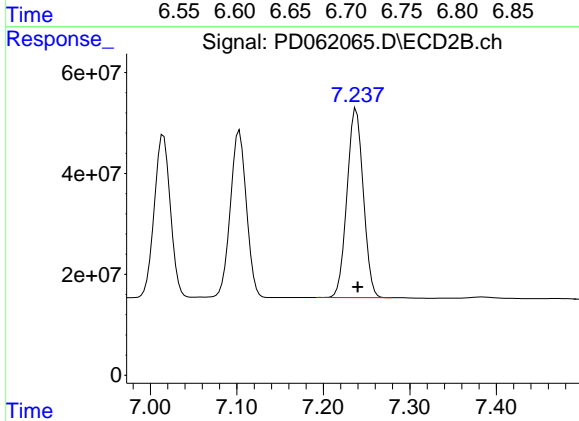


#18 Endrin aldehyde  
R.T.: 7.015 min  
Delta R.T.: -0.002 min  
Response: 416951070  
Conc: 53.02 ng/ml

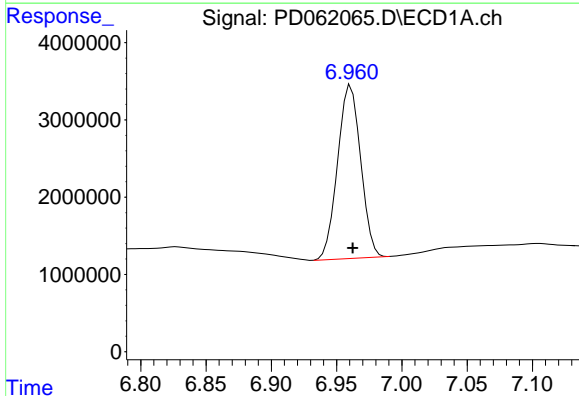


#19 Endosulfan Sulfate  
 R.T.: 6.705 min  
 Delta R.T.: -0.001 min  
 Response: 56579593  
 Conc: 52.44 ng/ml

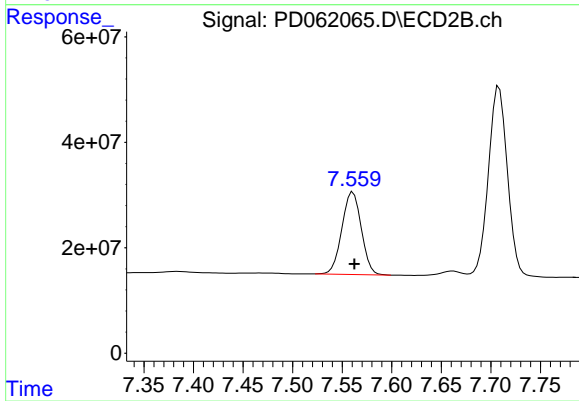
Instrument :  
 ECD\_D  
 ClientSampleId :  
 PB135622BS



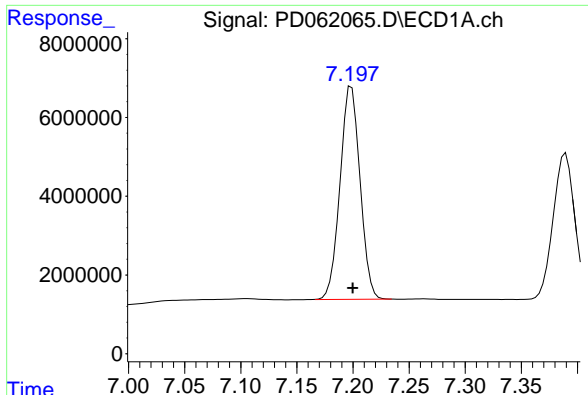
#19 Endosulfan Sulfate  
 R.T.: 7.238 min  
 Delta R.T.: -0.002 min  
 Response: 488865771  
 Conc: 48.78 ng/ml



#20 Methoxychlor  
 R.T.: 6.961 min  
 Delta R.T.: -0.001 min  
 Response: 27653658  
 Conc: 58.53 ng/ml

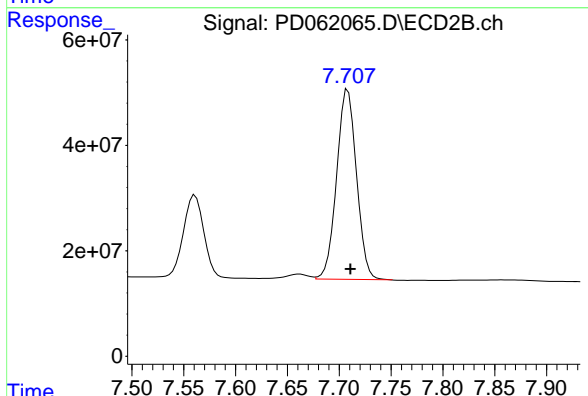


#20 Methoxychlor  
 R.T.: 7.561 min  
 Delta R.T.: -0.001 min  
 Response: 212923821  
 Conc: 47.23 ng/ml

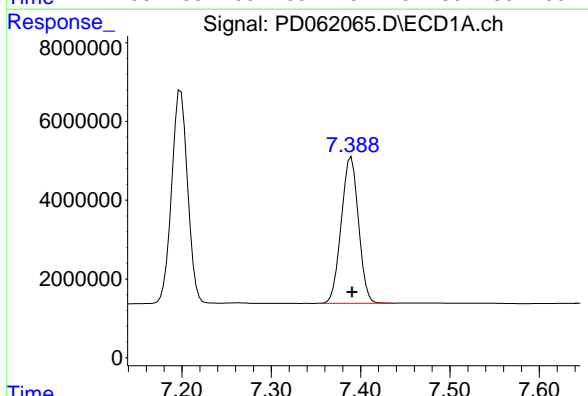


#21 Endrin ketone  
 R.T.: 7.199 min  
 Delta R.T.: -0.001 min  
 Response: 67125622  
 Conc: 52.60 ng/ml

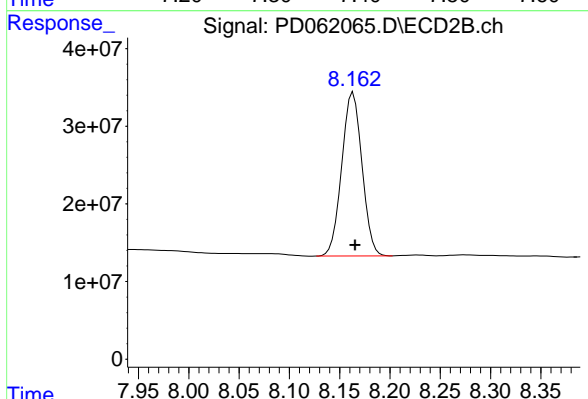
Instrument :  
 ECD\_D  
 ClientSampled :  
 PB135622BS



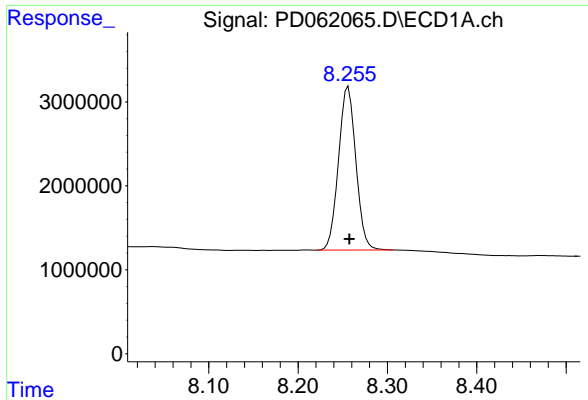
#21 Endrin ketone  
 R.T.: 7.708 min  
 Delta R.T.: -0.003 min  
 Response: 480938973  
 Conc: 47.42 ng/ml



#22 Mirex  
 R.T.: 7.390 min  
 Delta R.T.: 0.000 min  
 Response: 49733632  
 Conc: 60.52 ng/ml



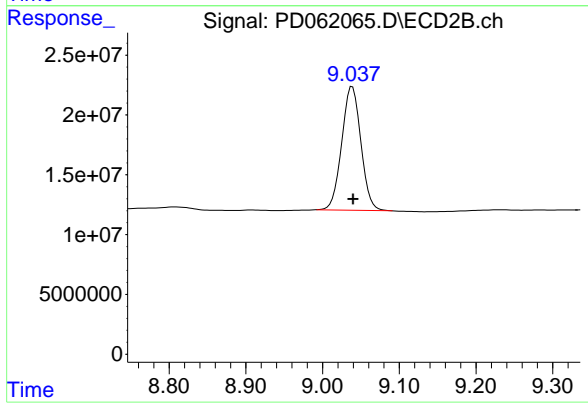
#22 Mirex  
 R.T.: 8.163 min  
 Delta R.T.: -0.002 min  
 Response: 294487907  
 Conc: 45.70 ng/ml



#28 Decachlorobiphenyl

R.T.: 8.256 min  
Delta R.T.: -0.001 min  
Response: 26271402  
Conc: 21.35 ng/ml

Instrument :  
ECD\_D  
ClientSampleId :  
PB135622BS



#28 Decachlorobiphenyl

R.T.: 9.039 min  
Delta R.T.: -0.001 min  
Response: 180017921  
Conc: 19.07 ng/ml