

Data Path : Z:\pestpcbsrv\HPCHEM1\ECD_D\Data\PD040822\
 Data File : PD069008.D
 Signal(s) : Signal #1: ECD1A.ch Signal #2: ECD2B.ch
 Acq On : 07 Apr 2022 18:56
 Operator : AR\AJ
 Sample : N2282-01MS
 Misc :
 ALS Vial : 9 Sample Multiplier: 1

Instrument :
 ECD_D
ClientSampleId :
 LA-1MS

Manual Integrations
APPROVED

Reviewed By :Abdul Mirza 04/08/2022
 Supervised By :mohammad ahmed 04/08/2022

Integration File signal 1: autoint1.e
 Integration File signal 2: autoint2.e
 Quant Time: Apr 08 01:14:03 2022
 Quant Method : Z:\pestpcbsrv\HPCHEM1\ECD_D\Method\PD031222.M
 Quant Title : GC Extractables
 QLast Update : Mon Mar 14 03:30:32 2022
 Response via : Initial Calibration
 Integrator: ChemStation

Volume Inj. : 2 µl
 Signal #1 Phase : ZB-MR2 Signal #2 Phase: ZB-MR1
 Signal #1 Info : 30M x 0.32mm x0.2 Signal #2 Info : 30M x 0.32mm x 0.50µm

Compound	RT#1	RT#2	Resp#1	Resp#2	ng/ml	ng/ml

System Monitoring Compounds						
1) SA Tetrachlo...	3.447	4.174	21672809	206.5E6	17.850	21.598
28) SA Decachlor...	8.207	9.373	23615916	131.1E6	18.693	23.126
Target Compounds						
2) A alpha-BHC	3.886	4.570	94048679	796.2E6	51.944	57.849
3) MA gamma-BHC...	4.170	4.862	87376424	725.5E6	52.329	58.025
4) MA Heptachlor	4.468	5.389	82448862	684.0E6	50.046	57.557
5) MB Aldrin	4.715	5.702	84627806	703.2E6	52.954	61.257
6) B beta-BHC	4.420	5.024	36711938	282.7E6	49.307	51.490
7) B delta-BHC	4.624	5.250	87135742	714.6E6	53.319	59.424
8) B Heptachlo...	5.160	6.090	76692061	607.3E6	51.282	58.159
9) A Endosulfan I	5.499	6.453	67694764	556.1E6	48.379	59.300
10) B gamma-Chl...	5.386	6.327	80237159	618.7E6	52.894	60.025
11) B alpha-Chl...	5.445	6.401	77631378	602.0E6	51.940	60.464
12) B 4,4'-DDE	5.611	6.552	71475829	550.4E6	52.246	59.398
13) MA Dieldrin	5.742	6.712	79582926	589.6E6	54.504m	60.702
14) MA Endrin	6.001	6.932	70308008	485.1E6	53.372	62.689
15) B Endosulfa...	6.275	7.137	70068276	471.4E6	56.218	62.361
16) A 4,4'-DDD	6.128	7.043	60929119	455.6E6	51.668	61.692
17) MA 4,4'-DDT	6.369	7.346	60818488	435.7E6	50.599	59.300
18) B Endrin al...	6.445	7.261	54414155	377.7E6	54.812	62.415
19) B Endosulfa...	6.658	7.485	66825187	443.7E6	52.255	60.322
20) A Methoxychlor	6.920	7.799	34114087	221.2E6	49.225	60.687
21) B Endrin ke...	7.151	7.961	74463082	460.4E6	50.581	59.415
22) Mirex	7.335	8.427	55928098	323.1E6	47.190	58.937

(f)=RT Delta > 1/2 Window (#)=Amounts differ by > 25% (m)=manual int.

Data Path : Z:\pestpcbsrv\HPCHEM1\ECD_D\Data\PD040822\
 Data File : PD069008.D
 Signal(s) : Signal #1: ECD1A.ch Signal #2: ECD2B.ch
 Acq On : 07 Apr 2022 18:56
 Operator : AR\AJ
 Sample : N2282-01MS
 Misc :
 ALS Vial : 9 Sample Multiplier: 1

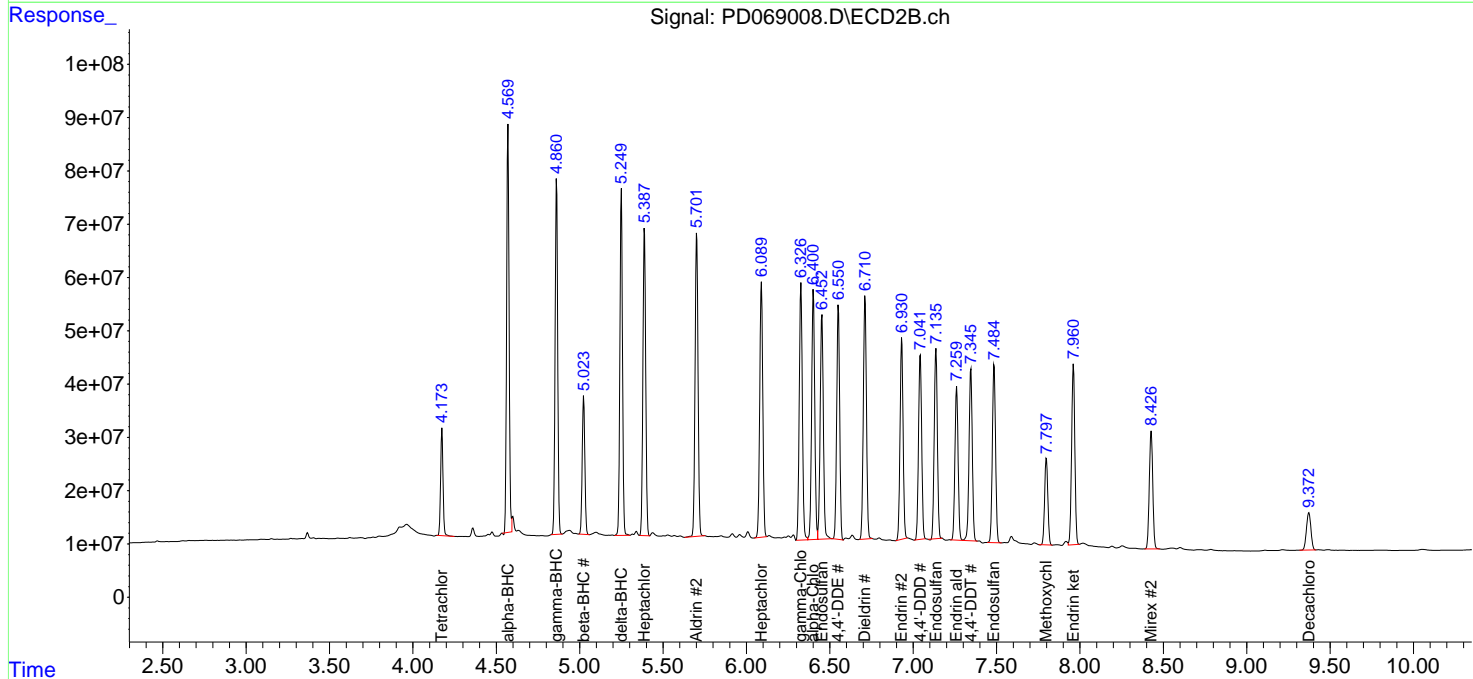
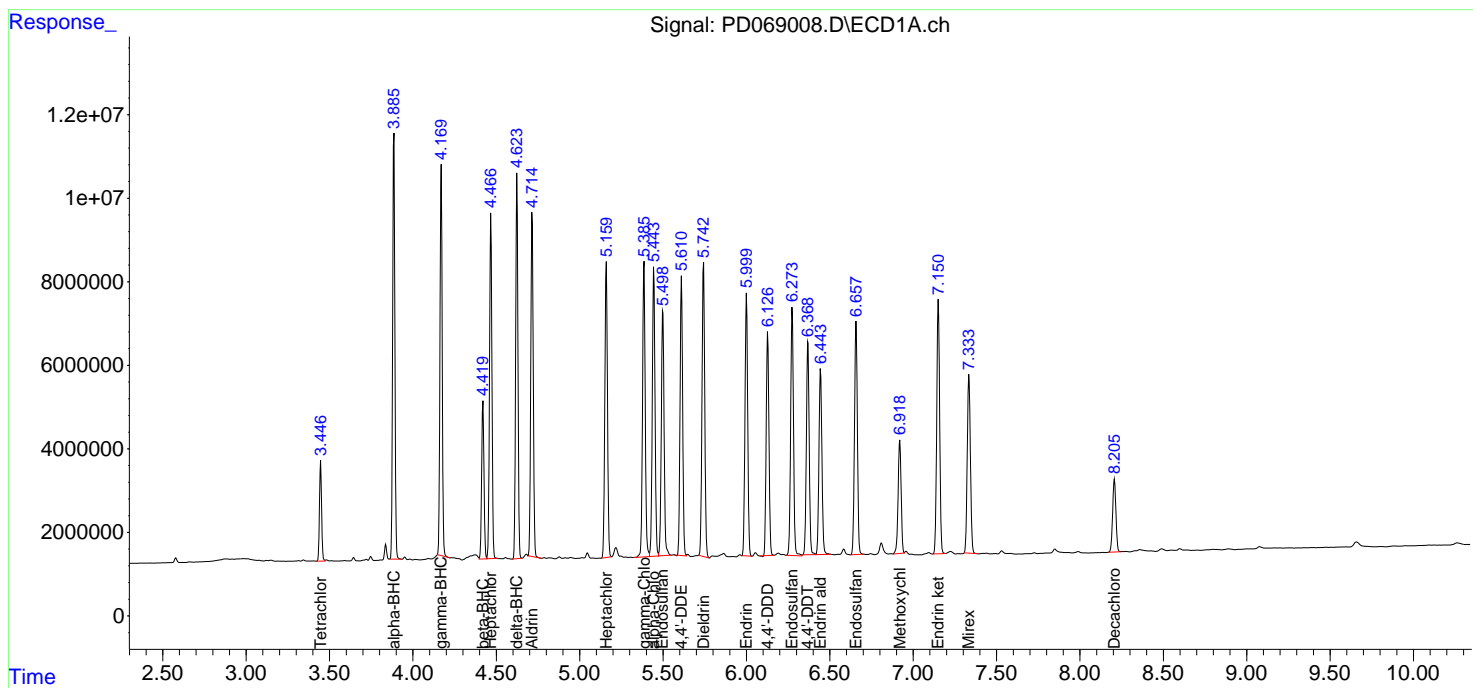
Instrument :
 ECD_D
ClientSampleId :
 LA-1MS

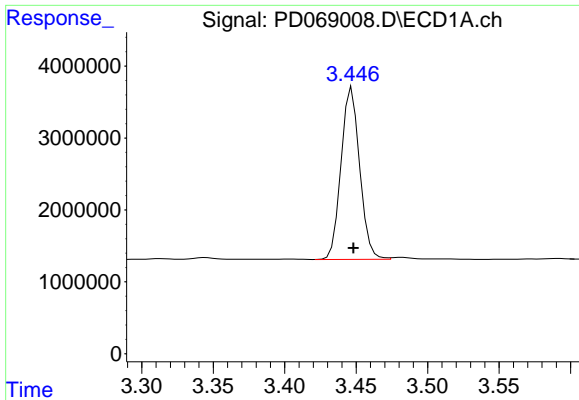
Manual Integrations
APPROVED

Reviewed By :Abdul Mirza 04/08/2022
 Supervised By :mohammad ahmed 04/08/2022

Integration File signal 1: autoint1.e
 Integration File signal 2: autoint2.e
 Quant Time: Apr 08 01:14:03 2022
 Quant Method : Z:\pestpcbsrv\HPCHEM1\ECD_D\Method\PD031222.M
 Quant Title : GC Extractables
 QLast Update : Mon Mar 14 03:30:32 2022
 Response via : Initial Calibration
 Integrator: ChemStation

Volume Inj. : 2 µl
 Signal #1 Phase : ZB-MR2 Signal #2 Phase: ZB-MR1
 Signal #1 Info : 30M x 0.32mm x0.2 Signal #2 Info : 30M x 0.32mm x 0.50µm





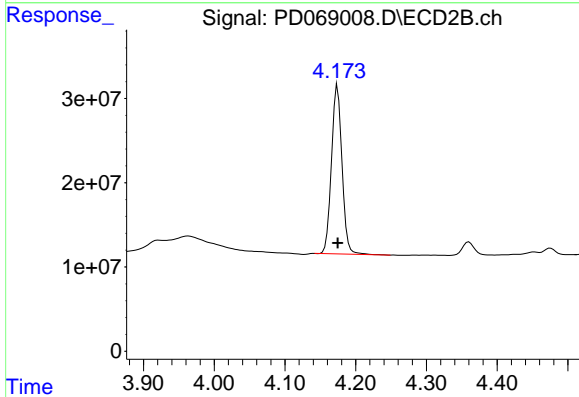
#1 Tetrachloro-m-xylene

R.T.: 3.447 min
 Delta R.T.: 0.000 min
 Response: 21672809
 Conc: 17.85 ng/ml

Instrument :
 ECD_D
 ClientSampleId :
 LA-1MS

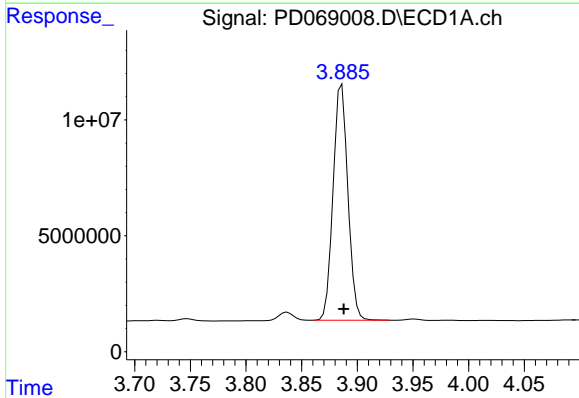
Manual Integrations
 APPROVED

Reviewed By :Abdul Mirza 04/08/2022
 Supervised By :mohammad ahmed 04/08/2022



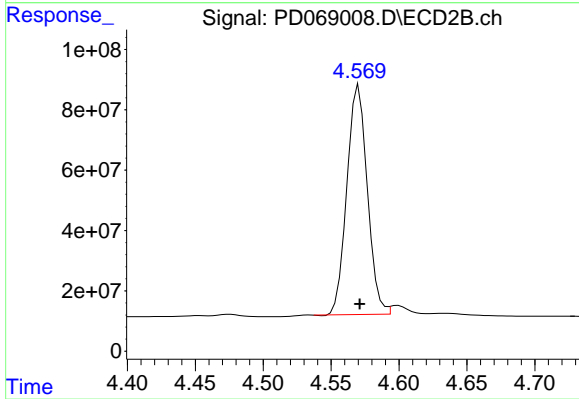
#1 Tetrachloro-m-xylene

R.T.: 4.174 min
 Delta R.T.: 0.000 min
 Response: 206490924
 Conc: 21.60 ng/ml



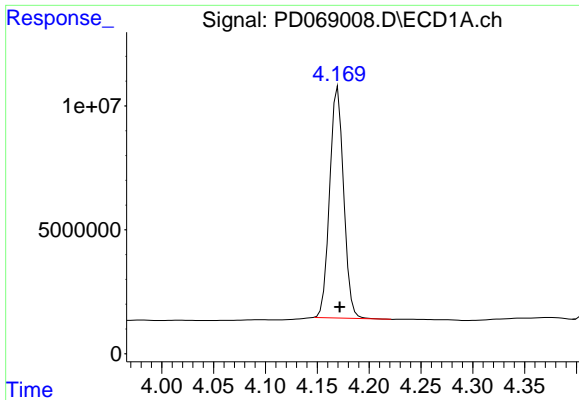
#2 alpha-BHC

R.T.: 3.886 min
 Delta R.T.: -0.002 min
 Response: 94048679
 Conc: 51.94 ng/ml



#2 alpha-BHC

R.T.: 4.570 min
 Delta R.T.: 0.000 min
 Response: 796171874
 Conc: 57.85 ng/ml

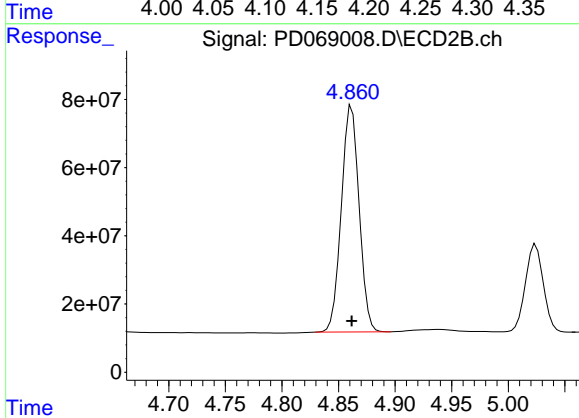


#3 gamma-BHC (Lindane)
 R.T.: 4.170 min
 Delta R.T.: -0.002 min
 Response: 87376424
 Conc: 52.33 ng/ml

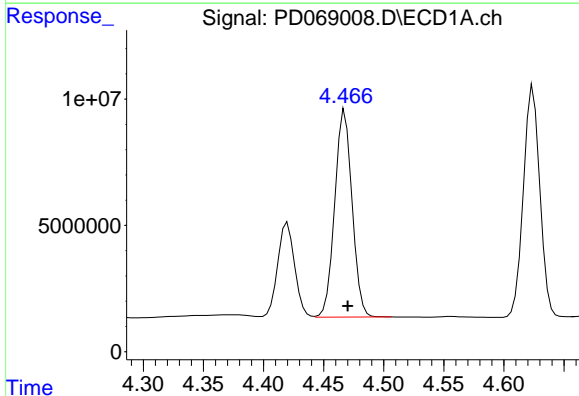
Instrument :
 ECD_D
 ClientSampleId :
 LA-1MS

Manual Integrations
APPROVED

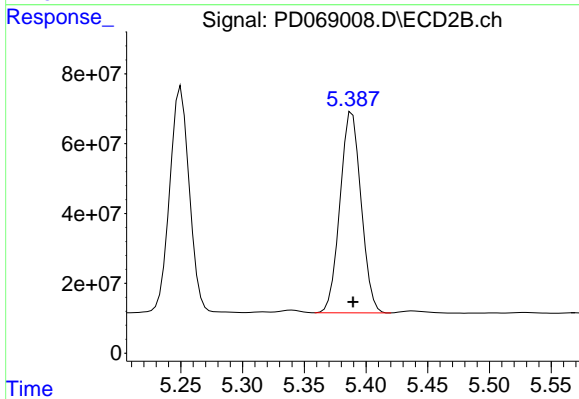
Reviewed By :Abdul Mirza 04/08/2022
 Supervised By :mohammad ahmed 04/08/2022



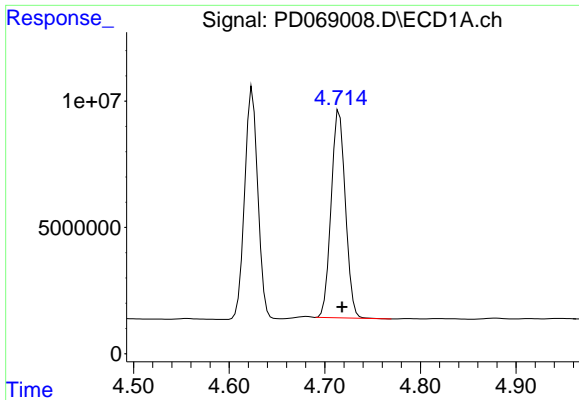
#3 gamma-BHC (Lindane)
 R.T.: 4.862 min
 Delta R.T.: 0.000 min
 Response: 725494280
 Conc: 58.02 ng/ml



#4 Heptachlor
 R.T.: 4.468 min
 Delta R.T.: -0.002 min
 Response: 82448862
 Conc: 50.05 ng/ml



#4 Heptachlor
 R.T.: 5.389 min
 Delta R.T.: 0.000 min
 Response: 684026053
 Conc: 57.56 ng/ml

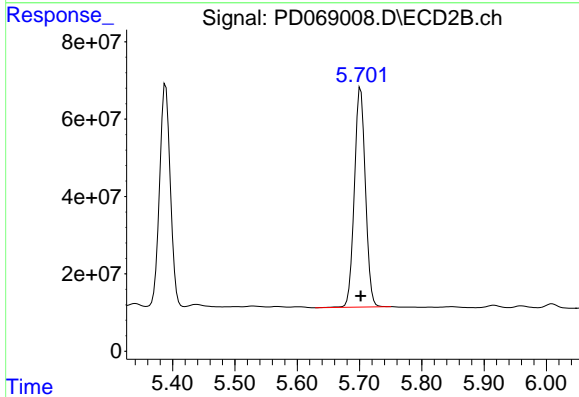


#5 Aldrin
 R.T.: 4.715 min
 Delta R.T.: -0.003 min
 Response: 84627806
 Conc: 52.95 ng/ml

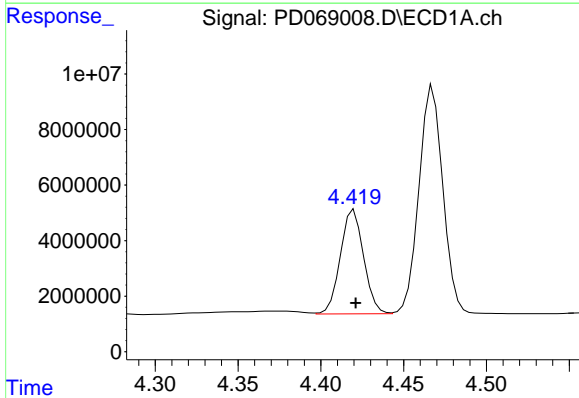
Instrument :
 ECD_D
 ClientSampleId :
 LA-1MS

Manual Integrations
 APPROVED

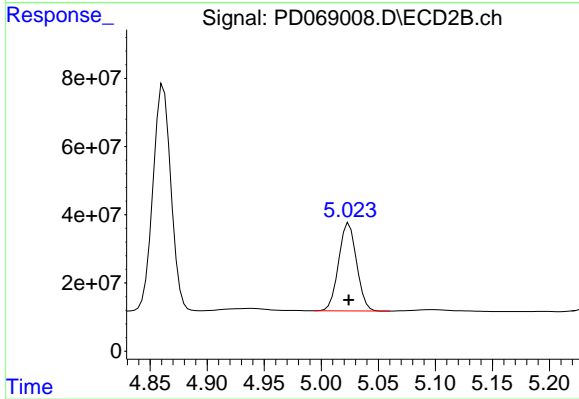
Reviewed By :Abdul Mirza 04/08/2022
 Supervised By :mohammad ahmed 04/08/2022



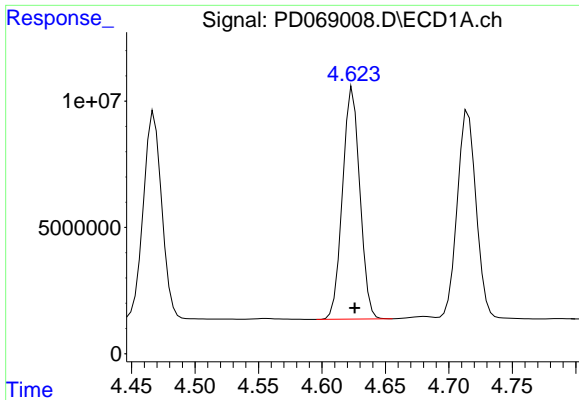
#5 Aldrin
 R.T.: 5.702 min
 Delta R.T.: 0.000 min
 Response: 703159078
 Conc: 61.26 ng/ml



#6 beta-BHC
 R.T.: 4.420 min
 Delta R.T.: -0.001 min
 Response: 36711938
 Conc: 49.31 ng/ml



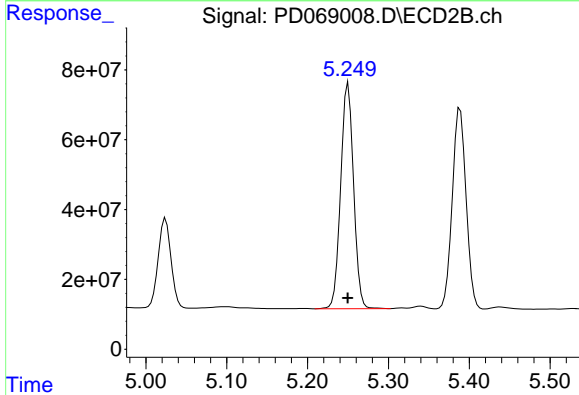
#6 beta-BHC
 R.T.: 5.024 min
 Delta R.T.: 0.000 min
 Response: 282672623
 Conc: 51.49 ng/ml



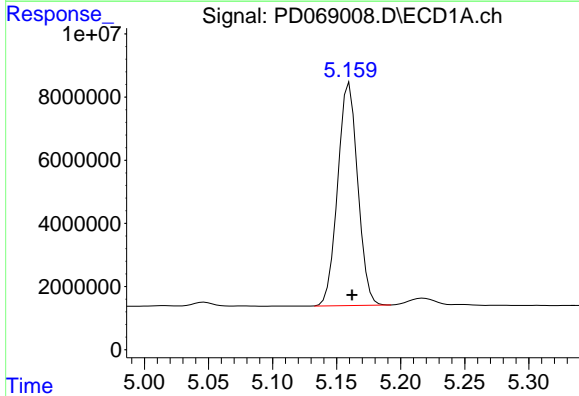
#7 delta-BHC
 R.T.: 4.624 min
 Delta R.T.: -0.002 min
 Response: 87135742
 Conc: 53.32 ng/ml

Instrument : ECD_D
 ClientSampleId : LA-1MS

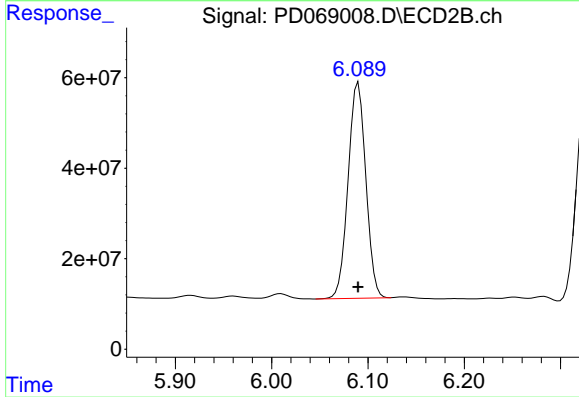
Manual Integrations
APPROVED
 Reviewed By :Abdul Mirza 04/08/2022
 Supervised By :mohammad ahmed 04/08/2022



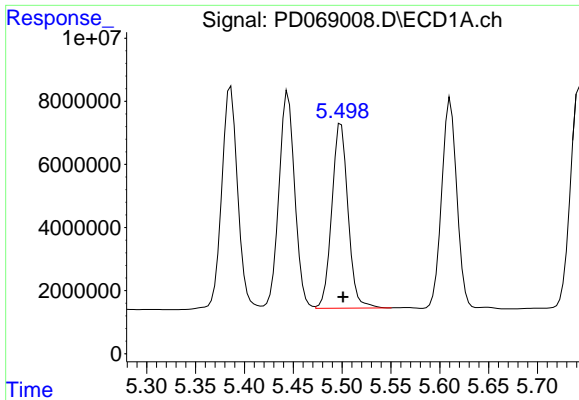
#7 delta-BHC
 R.T.: 5.250 min
 Delta R.T.: 0.000 min
 Response: 714618529
 Conc: 59.42 ng/ml



#8 Heptachlor epoxide
 R.T.: 5.160 min
 Delta R.T.: -0.002 min
 Response: 76692061
 Conc: 51.28 ng/ml



#8 Heptachlor epoxide
 R.T.: 6.090 min
 Delta R.T.: 0.000 min
 Response: 607340385
 Conc: 58.16 ng/ml



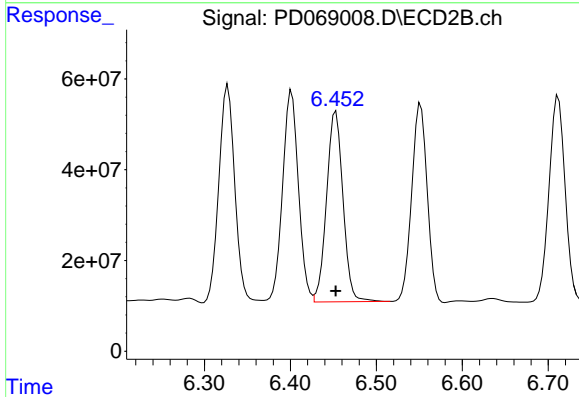
#9 Endosulfan I

R.T.: 5.499 min
 Delta R.T.: -0.002 min
 Response: 67694764
 Conc: 48.38 ng/ml

Instrument :
 ECD_D
 ClientSampleId :
 LA-1MS

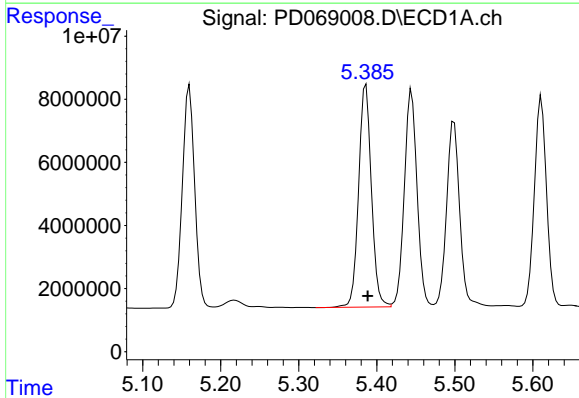
Manual Integrations
 APPROVED

Reviewed By :Abdul Mirza 04/08/2022
 Supervised By :mohammad ahmed 04/08/2022



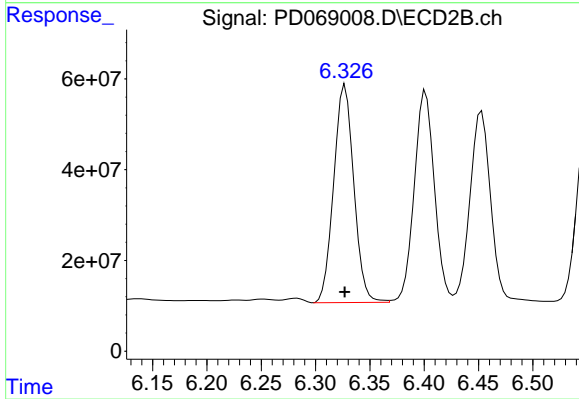
#9 Endosulfan I

R.T.: 6.453 min
 Delta R.T.: 0.000 min
 Response: 556129933
 Conc: 59.30 ng/ml



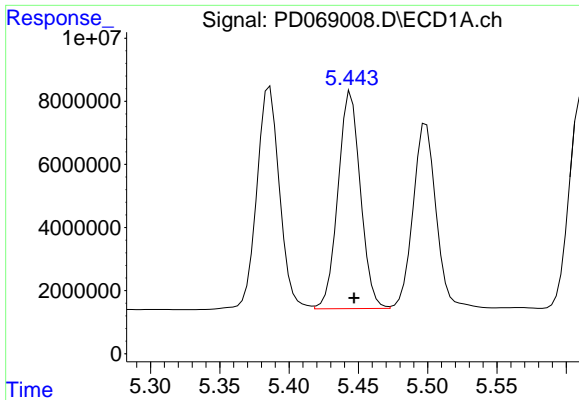
#10 gamma-Chlordane

R.T.: 5.386 min
 Delta R.T.: -0.002 min
 Response: 80237159
 Conc: 52.89 ng/ml



#10 gamma-Chlordane

R.T.: 6.327 min
 Delta R.T.: 0.000 min
 Response: 618688041
 Conc: 60.03 ng/ml

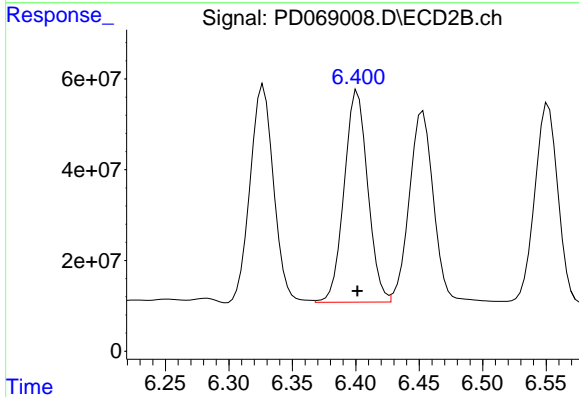


#11 alpha-Chlordane
 R.T.: 5.445 min
 Delta R.T.: -0.002 min
 Response: 77631378
 Conc: 51.94 ng/ml

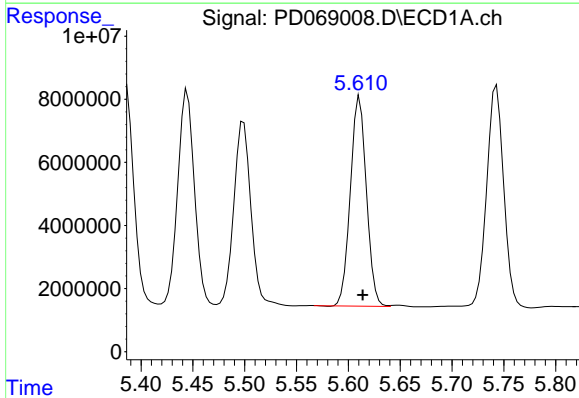
Instrument :
 ECD_D
 ClientSampleId :
 LA-1MS

Manual Integrations
 APPROVED

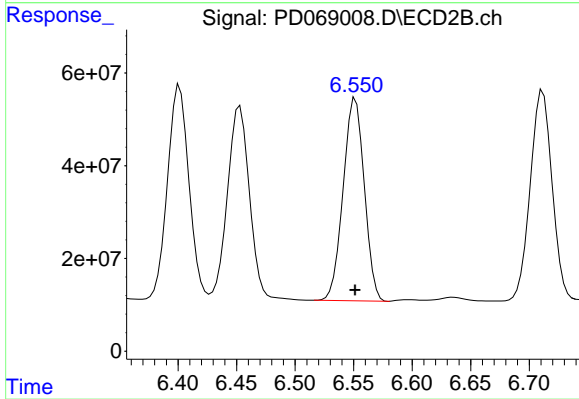
Reviewed By :Abdul Mirza 04/08/2022
 Supervised By :mohammad ahmed 04/08/2022



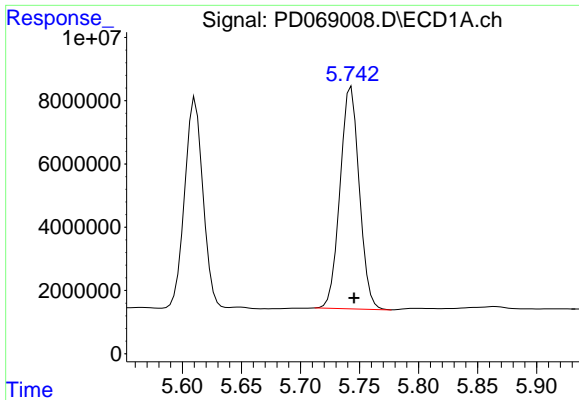
#11 alpha-Chlordane
 R.T.: 6.401 min
 Delta R.T.: 0.000 min
 Response: 601991646
 Conc: 60.46 ng/ml



#12 4,4'-DDE
 R.T.: 5.611 min
 Delta R.T.: -0.003 min
 Response: 71475829
 Conc: 52.25 ng/ml



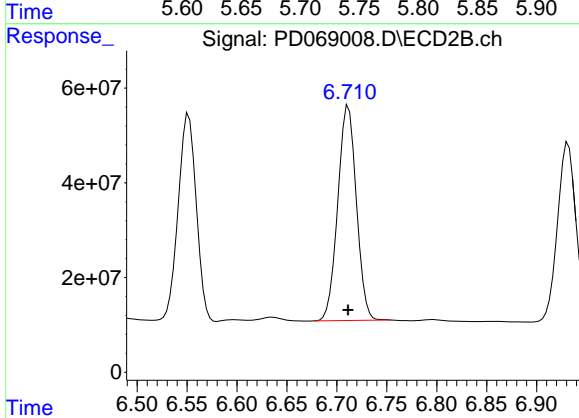
#12 4,4'-DDE
 R.T.: 6.552 min
 Delta R.T.: 0.000 min
 Response: 550434706
 Conc: 59.40 ng/ml



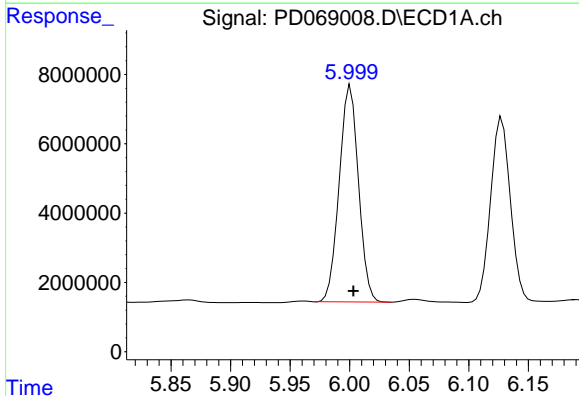
#13 Dieldrin
 R.T.: 5.742 min
 Delta R.T.: -0.004 min
 Response: 79582926
 Conc: 54.50 ng/ml

Instrument : ECD_D
 Client Sample Id : LA-1MS

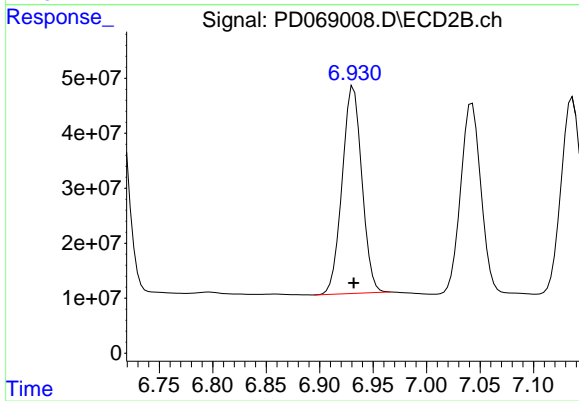
Manual Integrations
APPROVED
 Reviewed By :Abdul Mirza 04/08/2022
 Supervised By :mohammad ahmed 04/08/2022



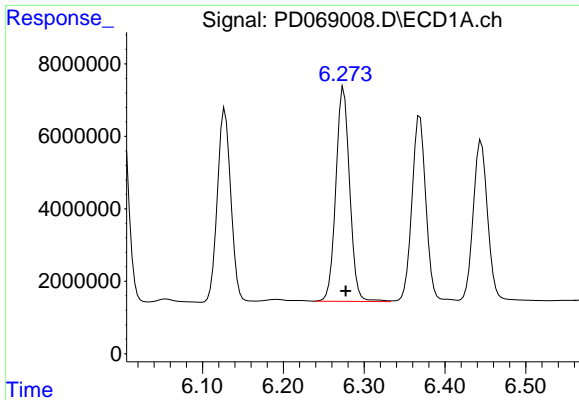
#13 Dieldrin
 R.T.: 6.712 min
 Delta R.T.: 0.000 min
 Response: 589598971
 Conc: 60.70 ng/ml



#14 Endrin
 R.T.: 6.001 min
 Delta R.T.: -0.002 min
 Response: 70308008
 Conc: 53.37 ng/ml



#14 Endrin
 R.T.: 6.932 min
 Delta R.T.: 0.000 min
 Response: 485060549
 Conc: 62.69 ng/ml



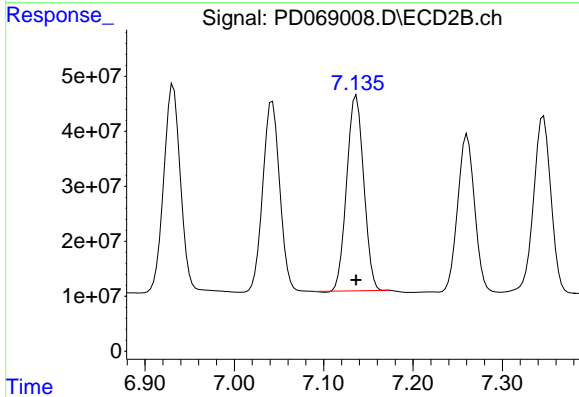
#15 Endosulfan II

R.T.: 6.275 min
 Delta R.T.: -0.002 min
 Response: 70068276
 Conc: 56.22 ng/ml

Instrument :
 ECD_D
 ClientSampleId :
 LA-1MS

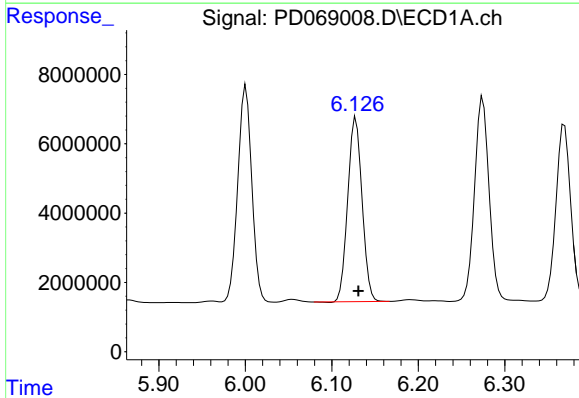
Manual Integrations
 APPROVED

Reviewed By :Abdul Mirza 04/08/2022
 Supervised By :mohammad ahmed 04/08/2022



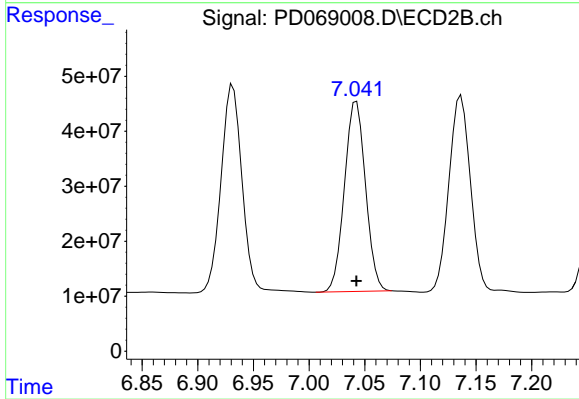
#15 Endosulfan II

R.T.: 7.137 min
 Delta R.T.: 0.000 min
 Response: 471359853
 Conc: 62.36 ng/ml



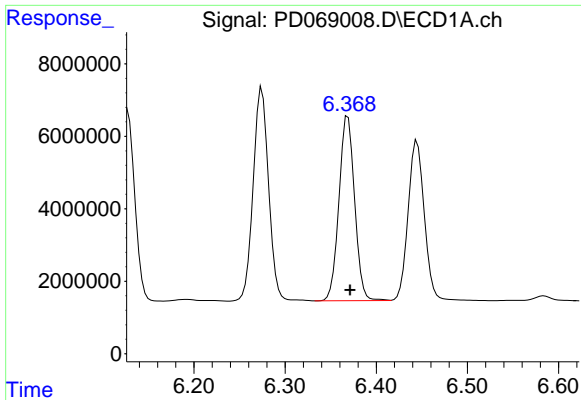
#16 4,4'-DDD

R.T.: 6.128 min
 Delta R.T.: -0.003 min
 Response: 60929119
 Conc: 51.67 ng/ml



#16 4,4'-DDD

R.T.: 7.043 min
 Delta R.T.: 0.000 min
 Response: 455609768
 Conc: 61.69 ng/ml



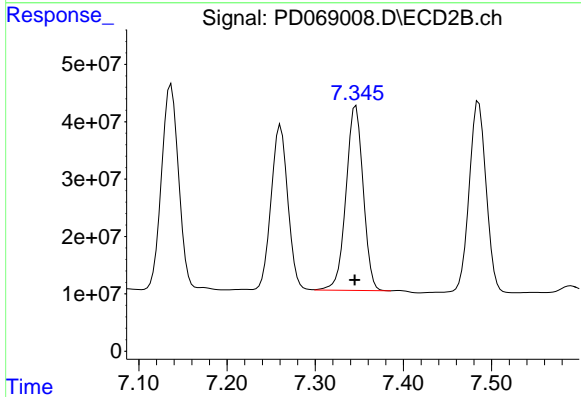
#17 4,4'-DDT

R.T.: 6.369 min
 Delta R.T.: -0.002 min
 Response: 60818488
 Conc: 50.60 ng/ml

Instrument :
 ECD_D
 ClientSampleId :
 LA-1MS

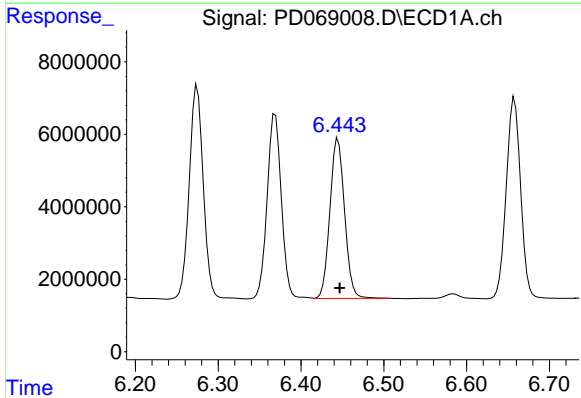
Manual Integrations
 APPROVED

Reviewed By :Abdul Mirza 04/08/2022
 Supervised By :mohammad ahmed 04/08/2022



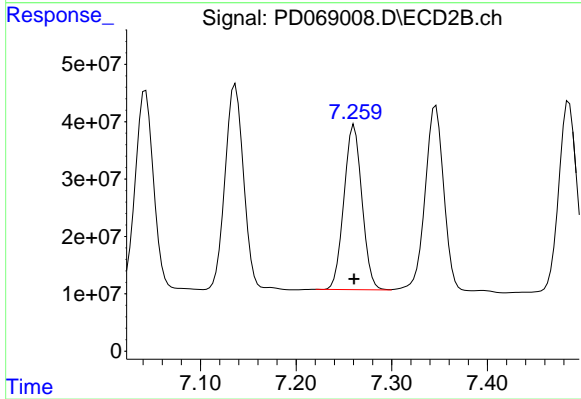
#17 4,4'-DDT

R.T.: 7.346 min
 Delta R.T.: 0.001 min
 Response: 435665287
 Conc: 59.30 ng/ml



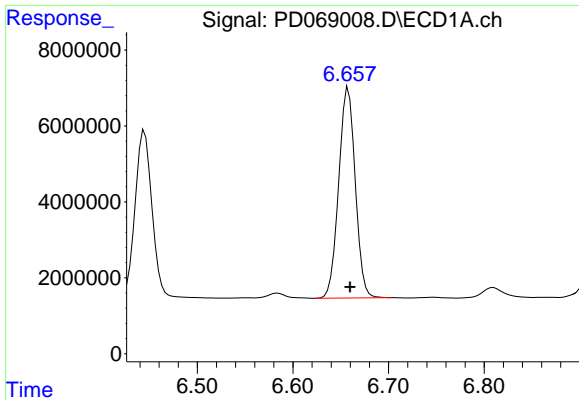
#18 Endrin aldehyde

R.T.: 6.445 min
 Delta R.T.: -0.002 min
 Response: 54414155
 Conc: 54.81 ng/ml



#18 Endrin aldehyde

R.T.: 7.261 min
 Delta R.T.: 0.000 min
 Response: 377723489
 Conc: 62.42 ng/ml



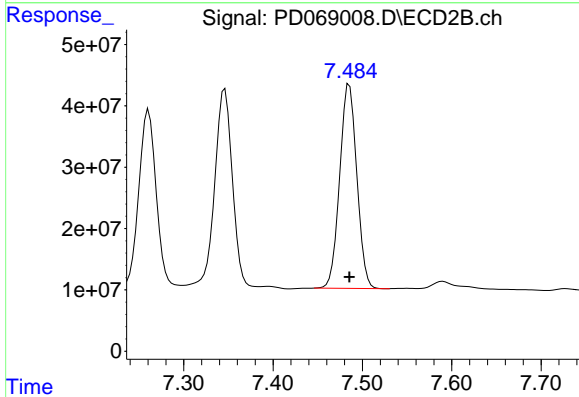
#19 Endosulfan Sulfate

R.T.: 6.658 min
 Delta R.T.: -0.002 min
 Response: 66825187
 Conc: 52.26 ng/ml

Instrument :
 ECD_D
 ClientSampleId :
 LA-1MS

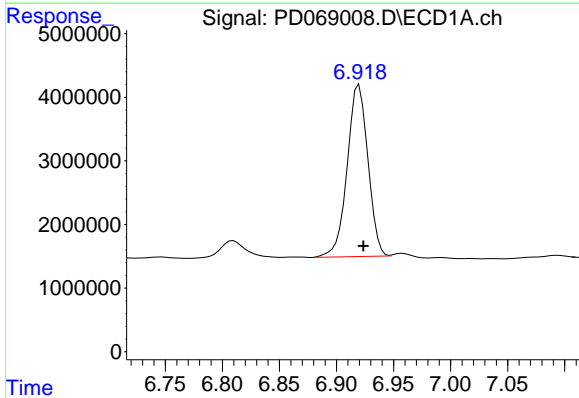
Manual Integrations
 APPROVED

Reviewed By :Abdul Mirza 04/08/2022
 Supervised By :mohammad ahmed 04/08/2022



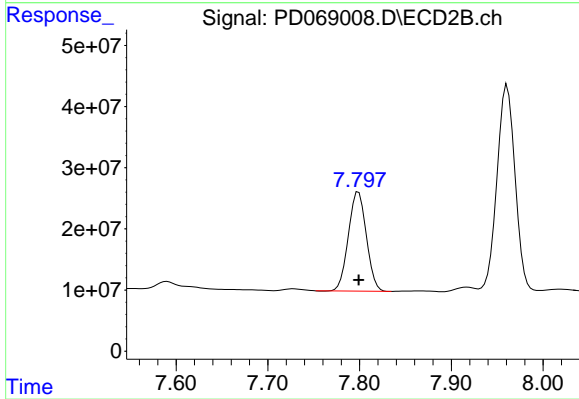
#19 Endosulfan Sulfate

R.T.: 7.485 min
 Delta R.T.: 0.000 min
 Response: 443668808
 Conc: 60.32 ng/ml



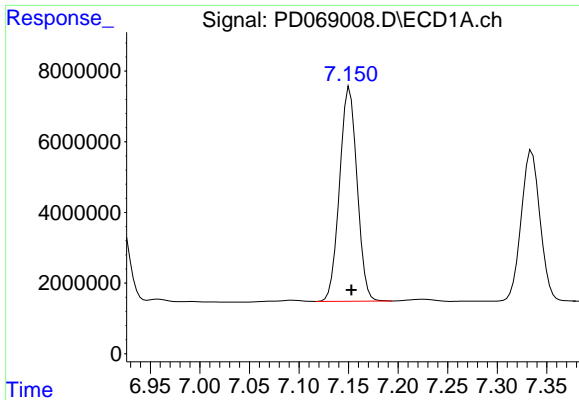
#20 Methoxychlor

R.T.: 6.920 min
 Delta R.T.: -0.004 min
 Response: 34114087
 Conc: 49.22 ng/ml



#20 Methoxychlor

R.T.: 7.799 min
 Delta R.T.: 0.000 min
 Response: 221220869
 Conc: 60.69 ng/ml



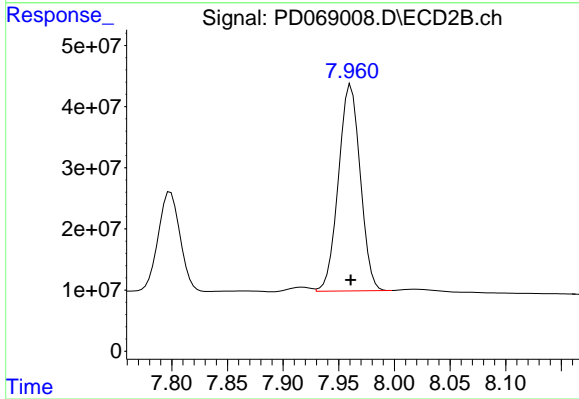
#21 Endrin ketone

R.T.: 7.151 min
 Delta R.T.: -0.002 min
 Response: 74463082
 Conc: 50.58 ng/ml

Instrument :
 ECD_D
 ClientSampleId :
 LA-1MS

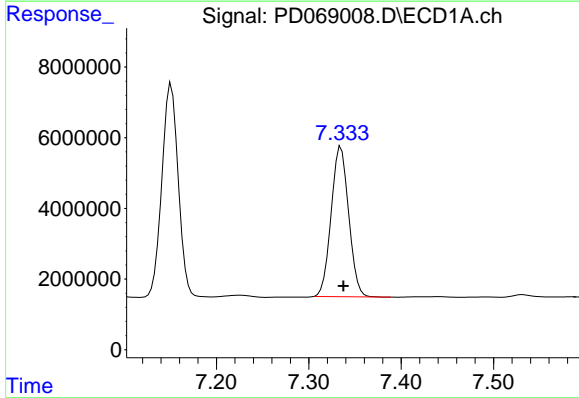
Manual Integrations
 APPROVED

Reviewed By :Abdul Mirza 04/08/2022
 Supervised By :mohammad ahmed 04/08/2022



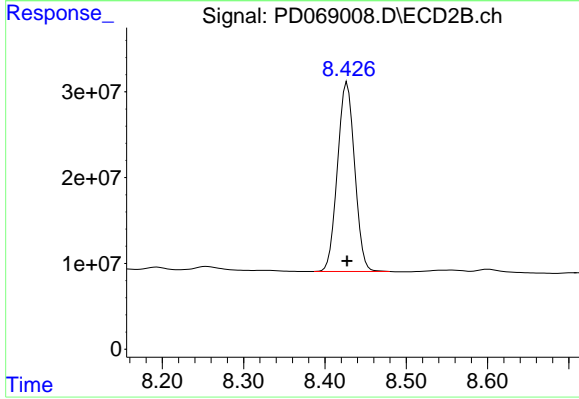
#21 Endrin ketone

R.T.: 7.961 min
 Delta R.T.: 0.000 min
 Response: 460390971
 Conc: 59.42 ng/ml



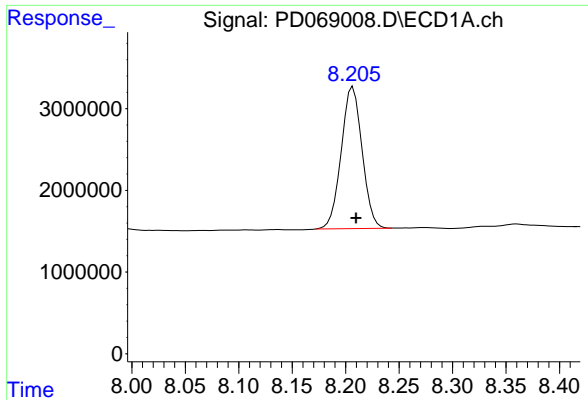
#22 Mirex

R.T.: 7.335 min
 Delta R.T.: -0.003 min
 Response: 55928098
 Conc: 47.19 ng/ml



#22 Mirex

R.T.: 8.427 min
 Delta R.T.: 0.000 min
 Response: 323055357
 Conc: 58.94 ng/ml



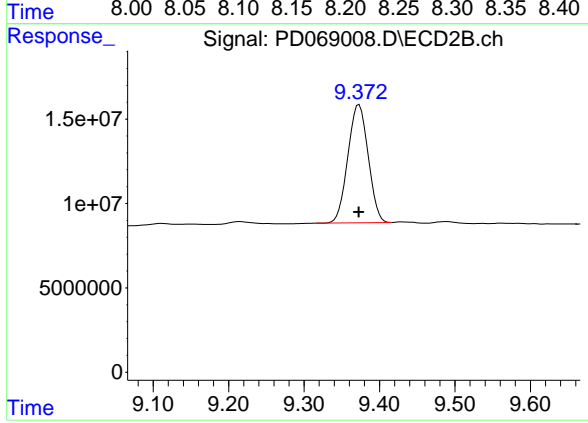
#28 Decachlorobiphenyl

R.T.: 8.207 min
Delta R.T.: -0.003 min
Response: 23615916
Conc: 18.69 ng/ml

Instrument :
ECD_D
ClientSampleId :
LA-1MS

Manual Integrations
APPROVED

Reviewed By :Abdul Mirza 04/08/2022
Supervised By :mohammad ahmed 04/08/2022



#28 Decachlorobiphenyl

R.T.: 9.373 min
Delta R.T.: 0.000 min
Response: 131050143
Conc: 23.13 ng/ml