

Data Path : Z:\pestpcbsrv\HPCHEM1\ECD_D\Data\PD040822\
 Data File : PD069012.D
 Signal(s) : Signal #1: ECD1A.ch Signal #2: ECD2B.ch
 Acq On : 07 Apr 2022 21:58
 Operator : AR\AJ
 Sample : N2298-01 10X
 Misc :
 ALS Vial : 11 Sample Multiplier: 1

Instrument :
 ECD_D
 ClientSampleId :
 RB21139

Integration File signal 1: autoint1.e
 Integration File signal 2: autoint2.e
 Quant Time: Apr 08 01:16:11 2022
 Quant Method : Z:\pestpcbsrv\HPCHEM1\ECD_D\Method\PD031222.M
 Quant Title : GC Extractables
 QLast Update : Mon Mar 14 03:30:32 2022
 Response via : Initial Calibration
 Integrator: ChemStation

Volume Inj. : 2 µl
 Signal #1 Phase : ZB-MR2 Signal #2 Phase: ZB-MR1
 Signal #1 Info : 30M x 0.32mm x0.2 Signal #2 Info : 30M x 0.32mm x 0.50µm

Compound	RT#1	RT#2	Resp#1	Resp#2	ng/ml	ng/ml

System Monitoring Compounds						
1) SA Tetrachlo...	3.447	4.175	2842645	24037420	2.341	2.514
28) SA Decachlor...	8.207	9.374	3090634	16935943	2.446	2.989
Target Compounds						
15) B Endosulfa...	6.292	7.141	26440192	173.6E6	21.214	22.973

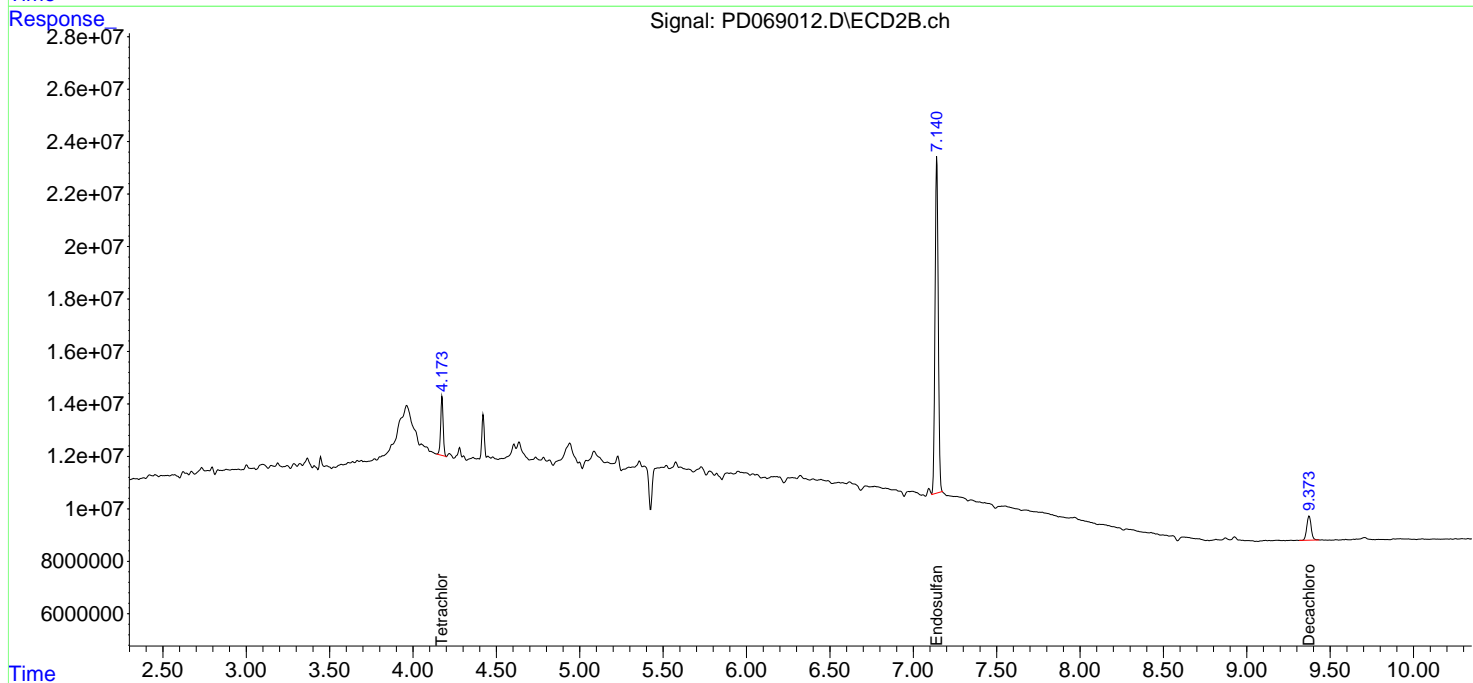
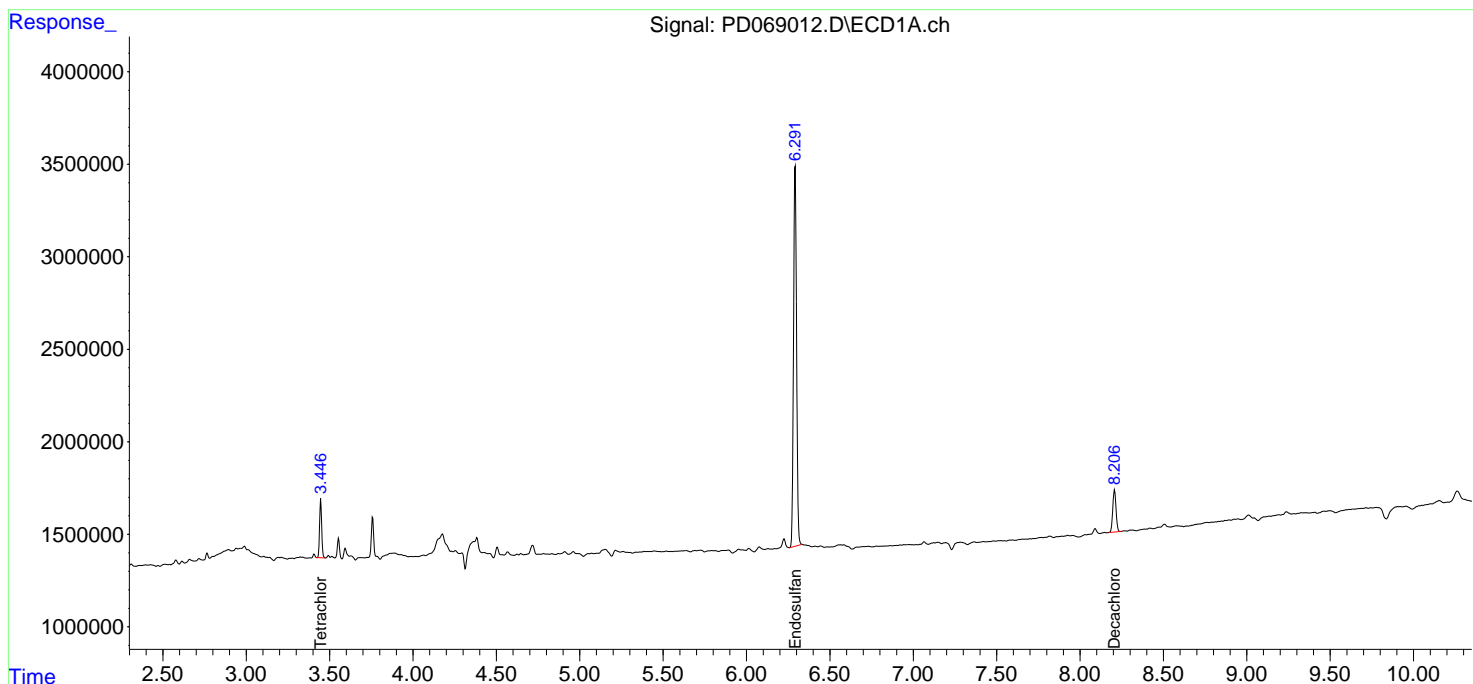
(f)=RT Delta > 1/2 Window (#)=Amounts differ by > 25% (m)=manual int.

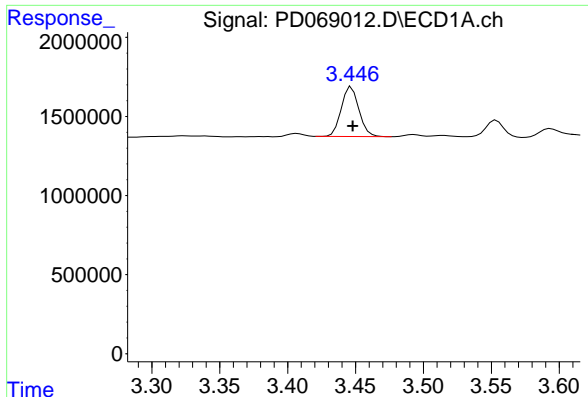
Data Path : Z:\pestpcbsrv\HPCHEM1\ECD_D\Data\PD040822\
 Data File : PD069012.D
 Signal(s) : Signal #1: ECD1A.ch Signal #2: ECD2B.ch
 Acq On : 07 Apr 2022 21:58
 Operator : AR\AJ
 Sample : N2298-01 10X
 Misc :
 ALS Vial : 11 Sample Multiplier: 1

Instrument :
 ECD_D
 ClientSampleId :
 RB21139

Integration File signal 1: autoint1.e
 Integration File signal 2: autoint2.e
 Quant Time: Apr 08 01:16:11 2022
 Quant Method : Z:\pestpcbsrv\HPCHEM1\ECD_D\Method\PD031222.M
 Quant Title : GC Extractables
 QLast Update : Mon Mar 14 03:30:32 2022
 Response via : Initial Calibration
 Integrator: ChemStation

Volume Inj. : 2 µl
 Signal #1 Phase : ZB-MR2 Signal #2 Phase: ZB-MR1
 Signal #1 Info : 30M x 0.32mm x 0.2 Signal #2 Info : 30M x 0.32mm x 0.50µm

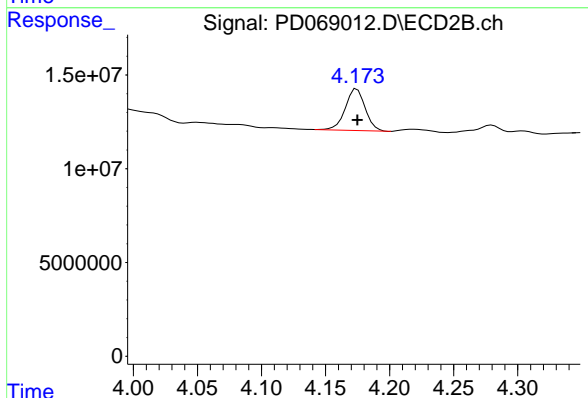




#1 Tetrachloro-m-xylene

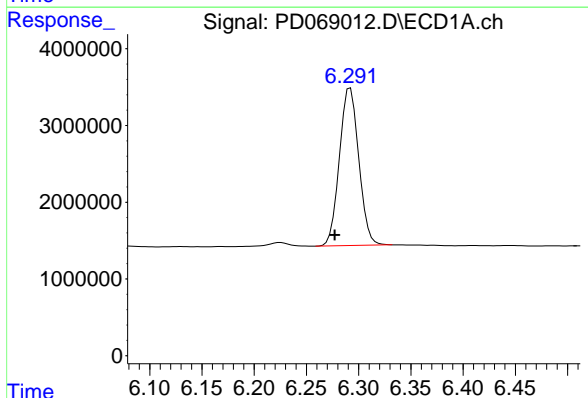
R.T.: 3.447 min
 Delta R.T.: 0.000 min
 Response: 2842645
 Conc: 2.34 ng/ml

Instrument :
 ECD_D
 ClientSampleId :
 RB21139



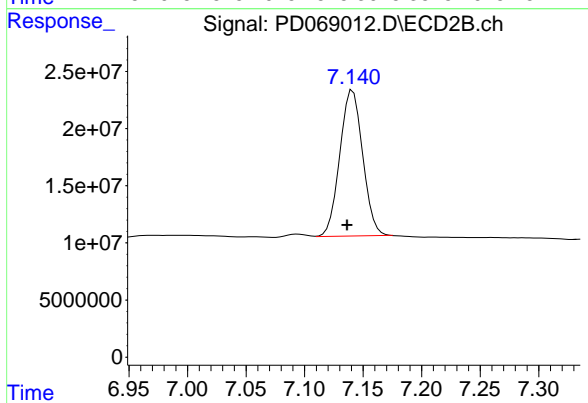
#1 Tetrachloro-m-xylene

R.T.: 4.175 min
 Delta R.T.: 0.000 min
 Response: 24037420
 Conc: 2.51 ng/ml



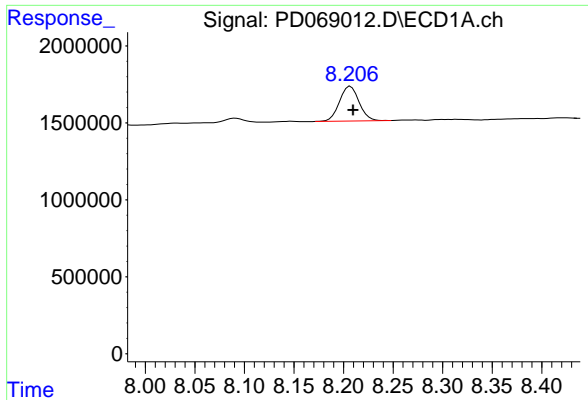
#15 Endosulfan II

R.T.: 6.292 min
 Delta R.T.: 0.015 min
 Response: 26440192
 Conc: 21.21 ng/ml



#15 Endosulfan II

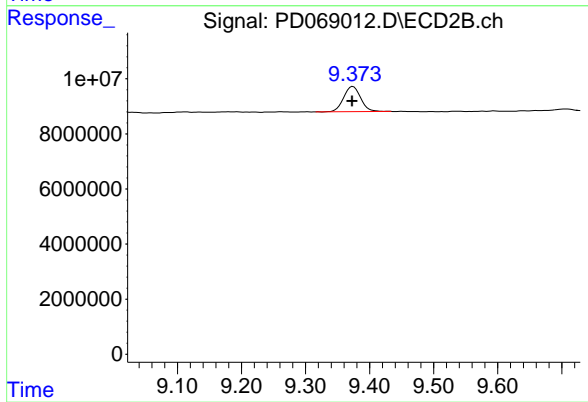
R.T.: 7.141 min
 Delta R.T.: 0.005 min
 Response: 173645371
 Conc: 22.97 ng/ml



#28 Decachlorobiphenyl

R.T.: 8.207 min
Delta R.T.: -0.003 min
Response: 3090634
Conc: 2.45 ng/ml

Instrument :
ECD_D
ClientSampleId :
RB21139



#28 Decachlorobiphenyl

R.T.: 9.374 min
Delta R.T.: 0.002 min
Response: 16935943
Conc: 2.99 ng/ml