

Data Path : Z:\pestpcbsrv\HPCHEM1\ECD_D\Data\PD040822\
 Data File : PD069014.D
 Signal(s) : Signal #1: ECD1A.ch Signal #2: ECD2B.ch
 Acq On : 07 Apr 2022 22:26
 Operator : AR\AJ
 Sample : I.BLK
 Misc :
 ALS Vial : 2 Sample Multiplier: 1

Instrument :
 ECD_D
 ClientSampleId :
 I.BLK

Integration File signal 1: autoint1.e
 Integration File signal 2: autoint2.e
 Quant Time: Apr 08 01:16:39 2022
 Quant Method : Z:\pestpcbsrv\HPCHEM1\ECD_D\Method\PD031222.M
 Quant Title : GC Extractables
 QLast Update : Mon Mar 14 03:30:32 2022
 Response via : Initial Calibration
 Integrator: ChemStation

Volume Inj. : 2 µl
 Signal #1 Phase : ZB-MR2 Signal #2 Phase: ZB-MR1
 Signal #1 Info : 30M x 0.32mm x0.2 Signal #2 Info : 30M x 0.32mm x 0.50µm

| Compound | RT#1 | RT#2 | Resp#1 | Resp#2 | ng/ml | ng/ml |
|-----------------------------|-------|-------|----------|---------|--------|--------|
| ----- | | | | | | |
| System Monitoring Compounds | | | | | | |
| 1) SA Tetrachlo... | 3.447 | 4.174 | 26436991 | 249.7E6 | 21.774 | 26.116 |
| 28) SA Decachlor... | 8.207 | 9.373 | 27371785 | 150.3E6 | 21.666 | 26.515 |

Target Compounds

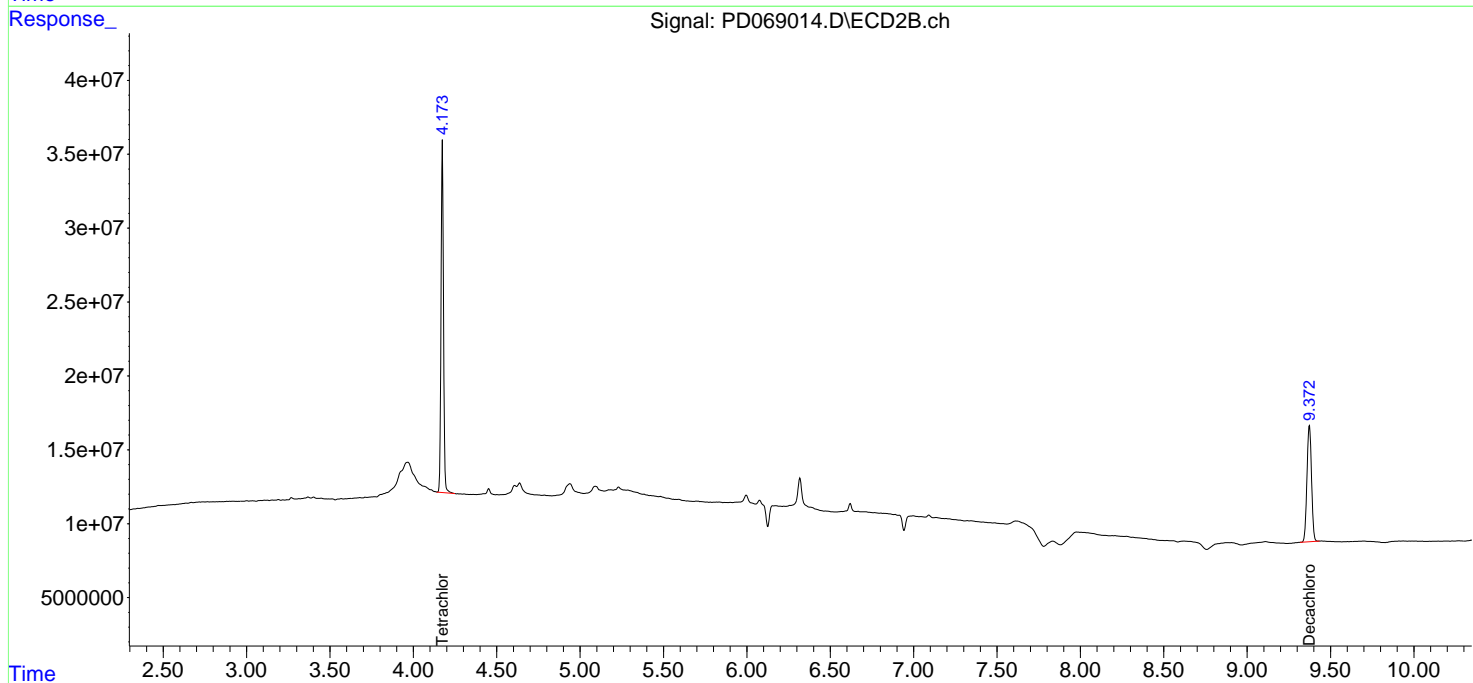
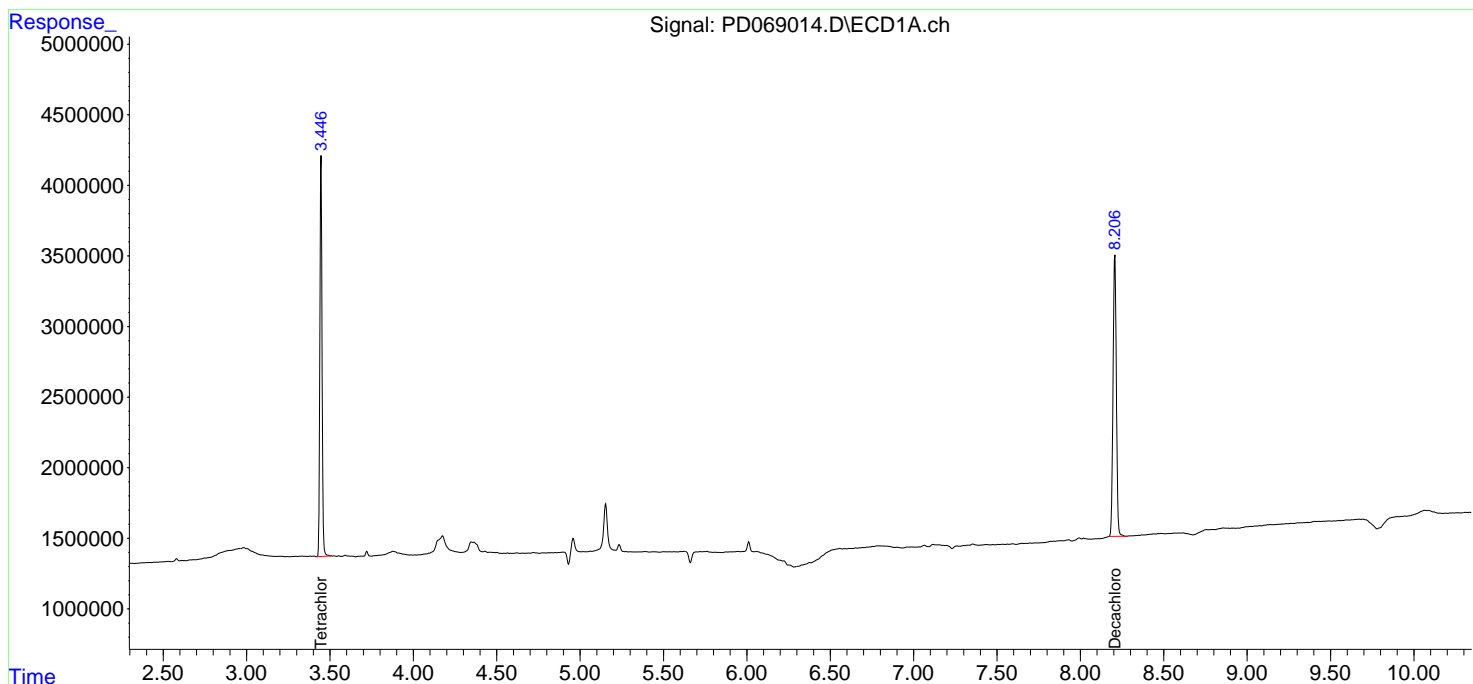
 (f)=RT Delta > 1/2 Window (#)=Amounts differ by > 25% (m)=manual int.

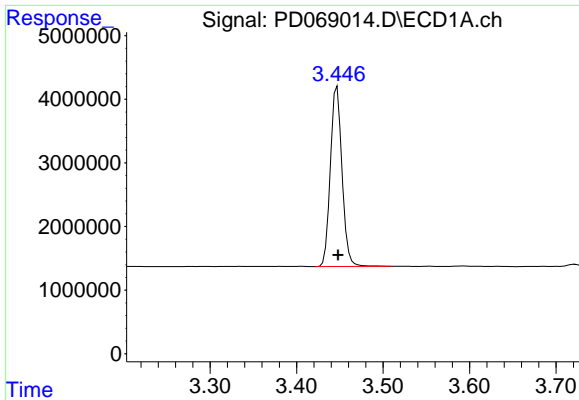
Data Path : Z:\pestpcbsrv\HPCHEM1\ECD_D\Data\PD040822\
 Data File : PD069014.D
 Signal(s) : Signal #1: ECD1A.ch Signal #2: ECD2B.ch
 Acq On : 07 Apr 2022 22:26
 Operator : AR\AJ
 Sample : I.BLK
 Misc :
 ALS Vial : 2 Sample Multiplier: 1

Instrument :
 ECD_D
 ClientSampleId :
 I.BLK

Integration File signal 1: autoint1.e
 Integration File signal 2: autoint2.e
 Quant Time: Apr 08 01:16:39 2022
 Quant Method : Z:\pestpcbsrv\HPCHEM1\ECD_D\Method\PD031222.M
 Quant Title : GC Extractables
 QLast Update : Mon Mar 14 03:30:32 2022
 Response via : Initial Calibration
 Integrator: ChemStation

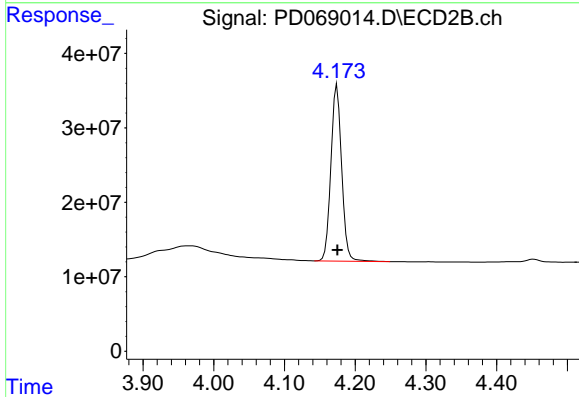
Volume Inj. : 2 µl
 Signal #1 Phase : ZB-MR2 Signal #2 Phase: ZB-MR1
 Signal #1 Info : 30M x 0.32mm x 0.2 Signal #2 Info : 30M x 0.32mm x 0.50µm



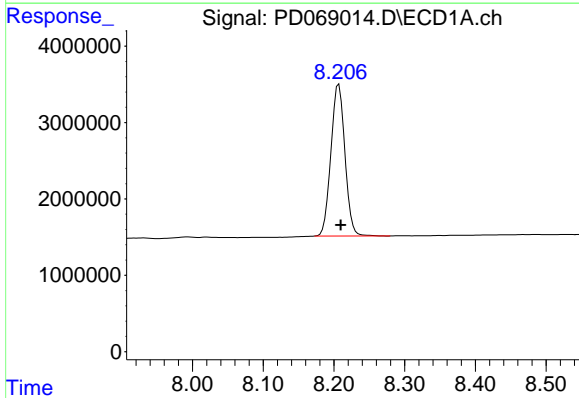


#1 Tetrachloro-m-xylene
 R.T.: 3.447 min
 Delta R.T.: -0.001 min
 Response: 26436991
 Conc: 21.77 ng/ml

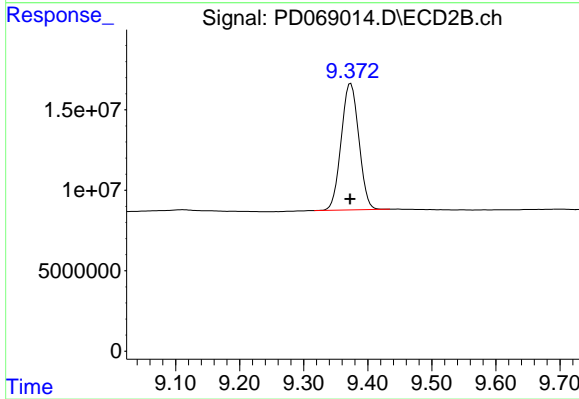
Instrument :
 ECD_D
 ClientSampleId :
 I.BLK



#1 Tetrachloro-m-xylene
 R.T.: 4.174 min
 Delta R.T.: 0.000 min
 Response: 249688432
 Conc: 26.12 ng/ml



#28 Decachlorobiphenyl
 R.T.: 8.207 min
 Delta R.T.: -0.003 min
 Response: 27371785
 Conc: 21.67 ng/ml



#28 Decachlorobiphenyl
 R.T.: 9.373 min
 Delta R.T.: 0.000 min
 Response: 150252760
 Conc: 26.51 ng/ml